

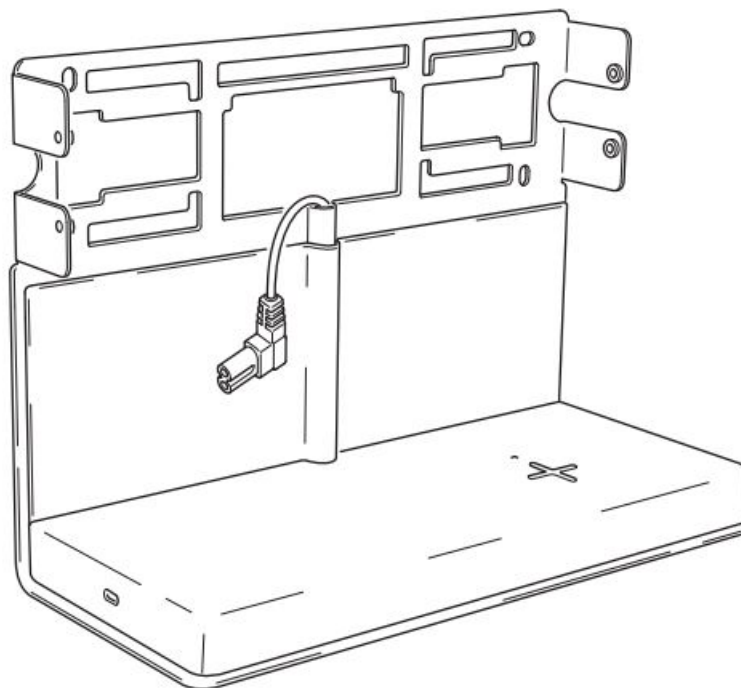


IKEA SYMFONISK Shelf with Wireless Charger Instruction Manual

[Home](#) » [Ikea](#) » **IKEA SYMFONISK Shelf with Wireless Charger Instruction Manual** 

***IKEA SYMFONISK Shelf with Wireless
Charger Instruction Manual***

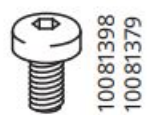
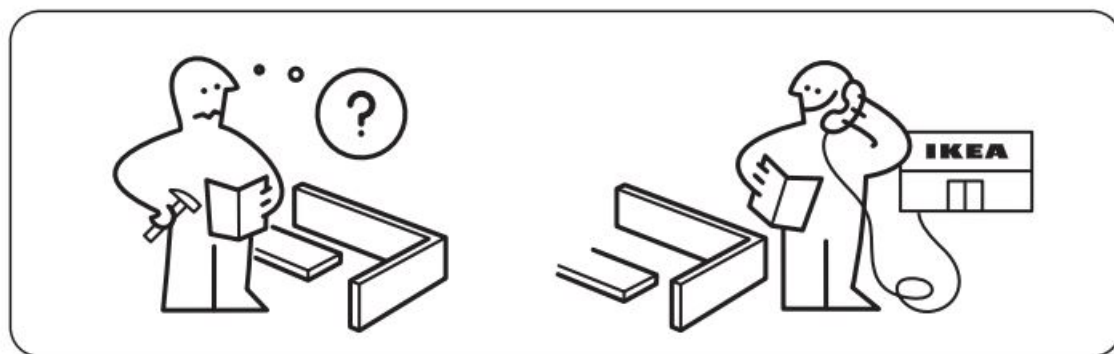
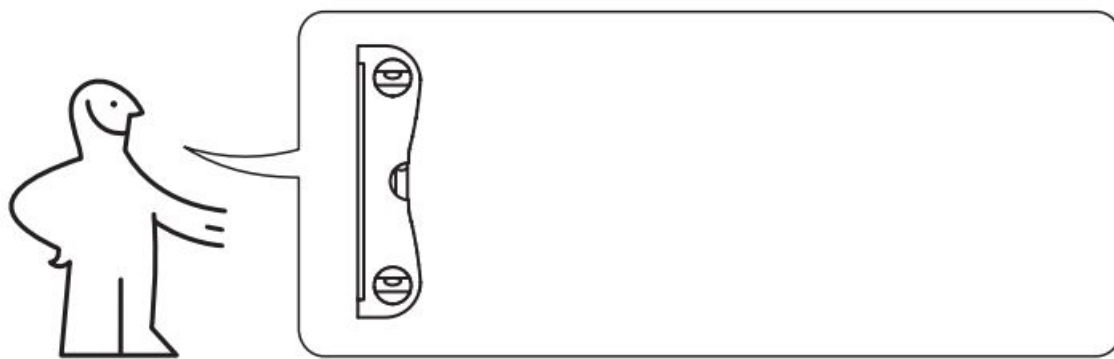
SYMFONISK



Design and Quality
IKEA of Sweden

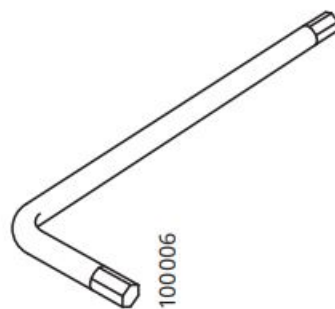


As wall materials vary, screws for fixing to wall are not included. For advice on suitable screw systems, contact your local specialised dealer.



4x

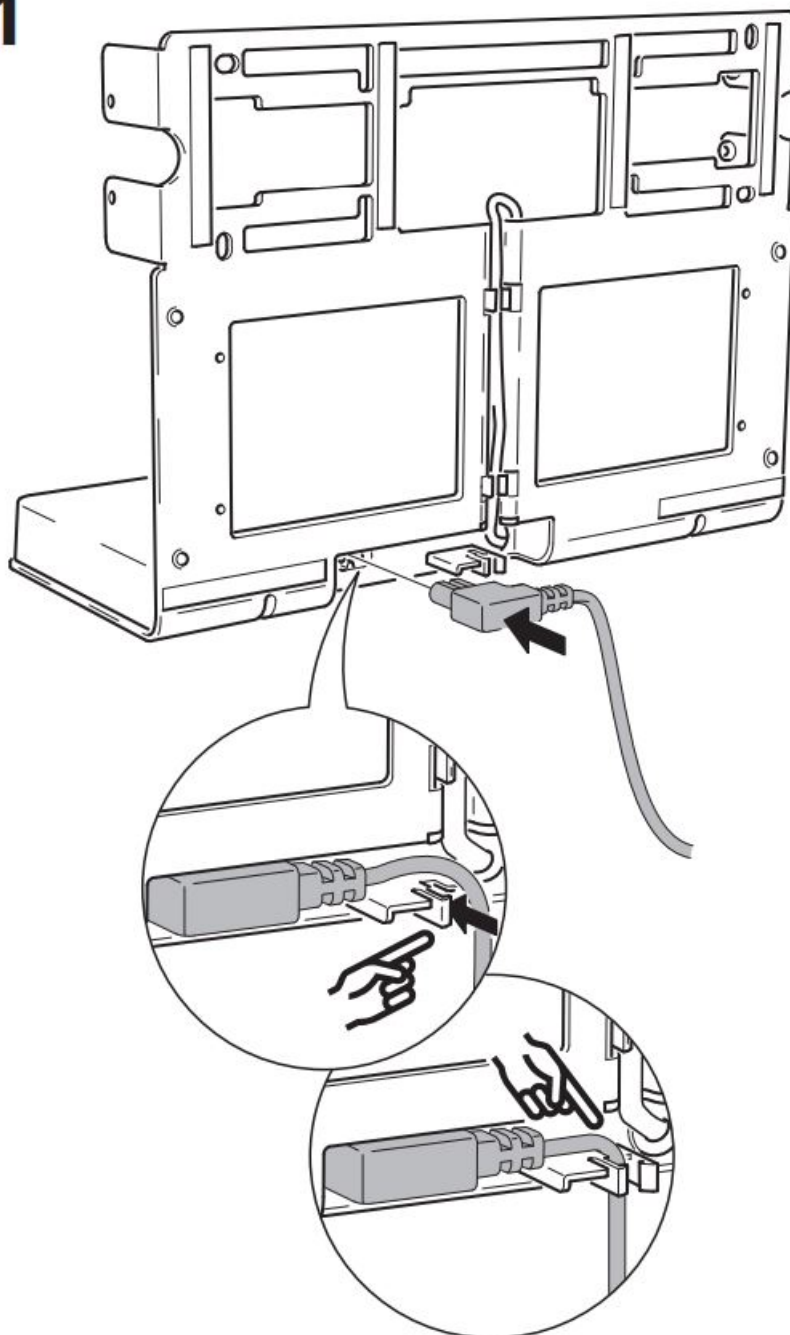
10081398
10081379



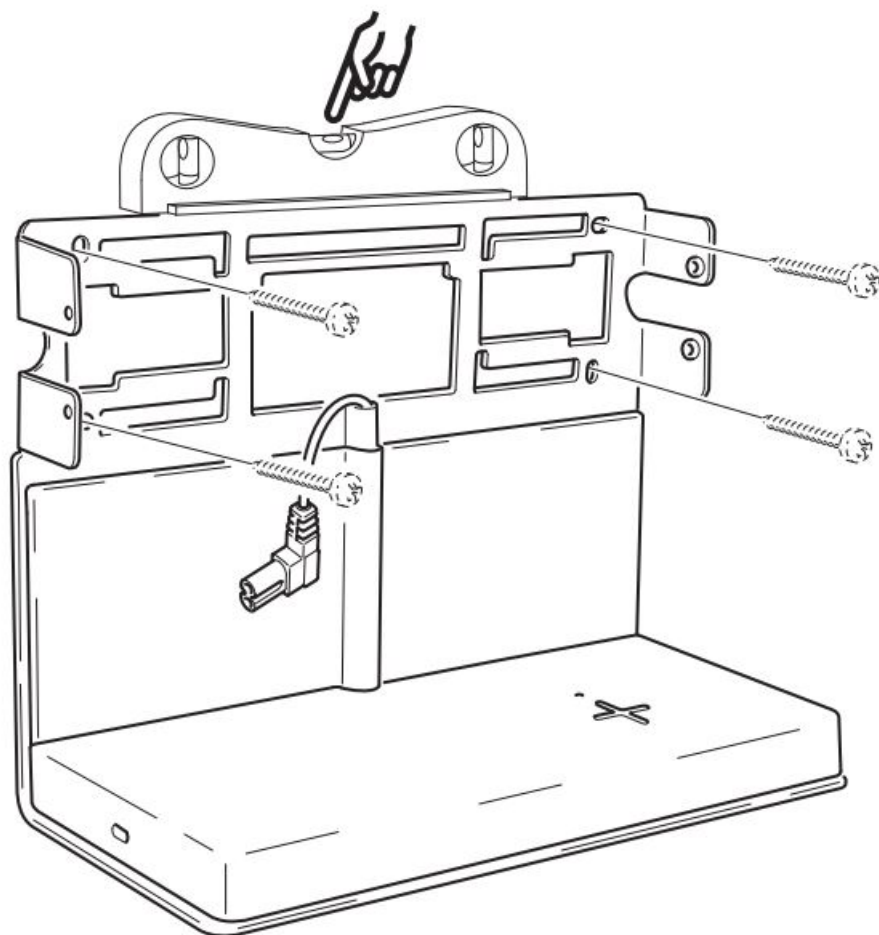
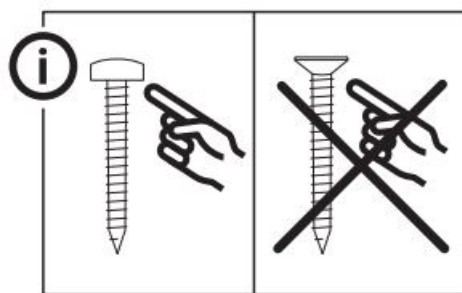
1x

100006

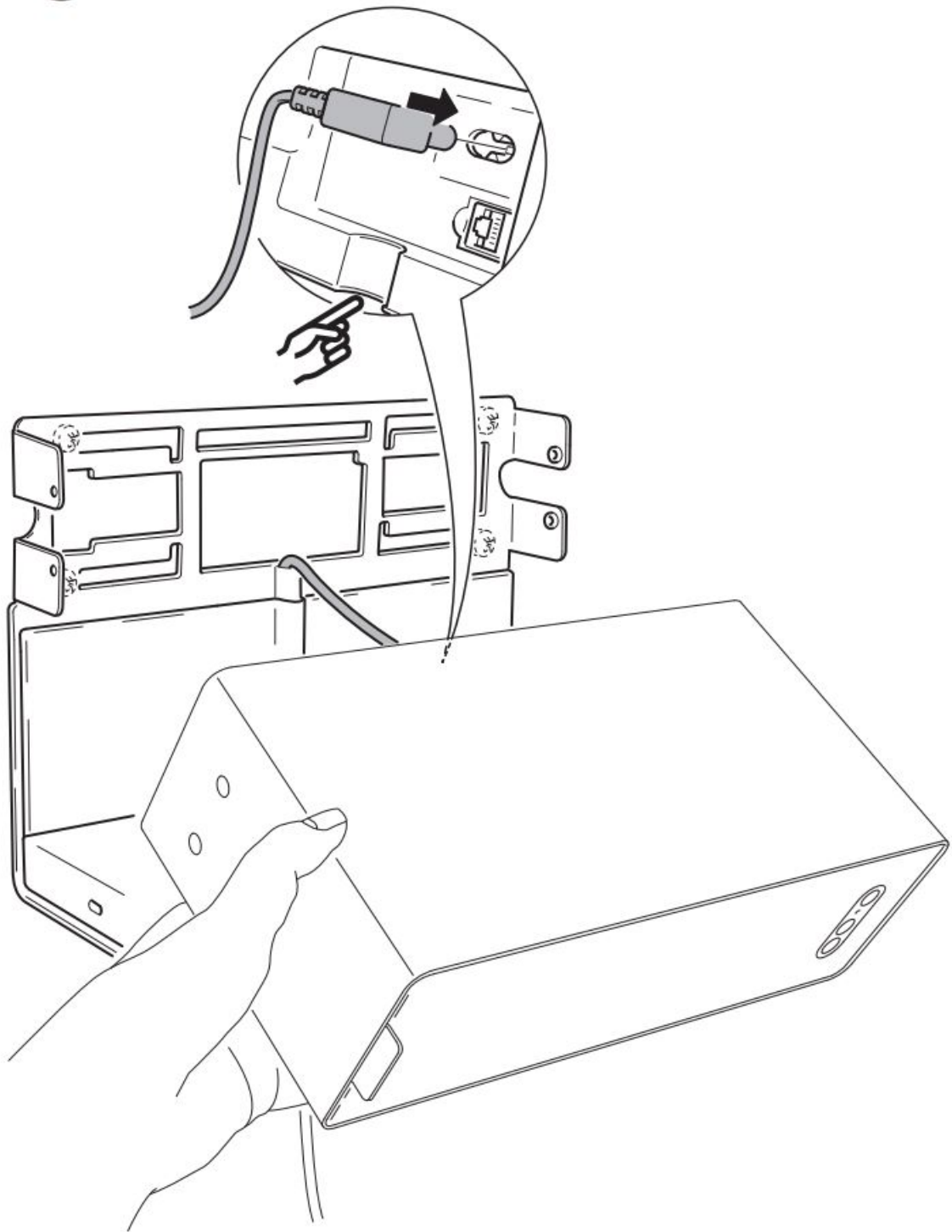
1

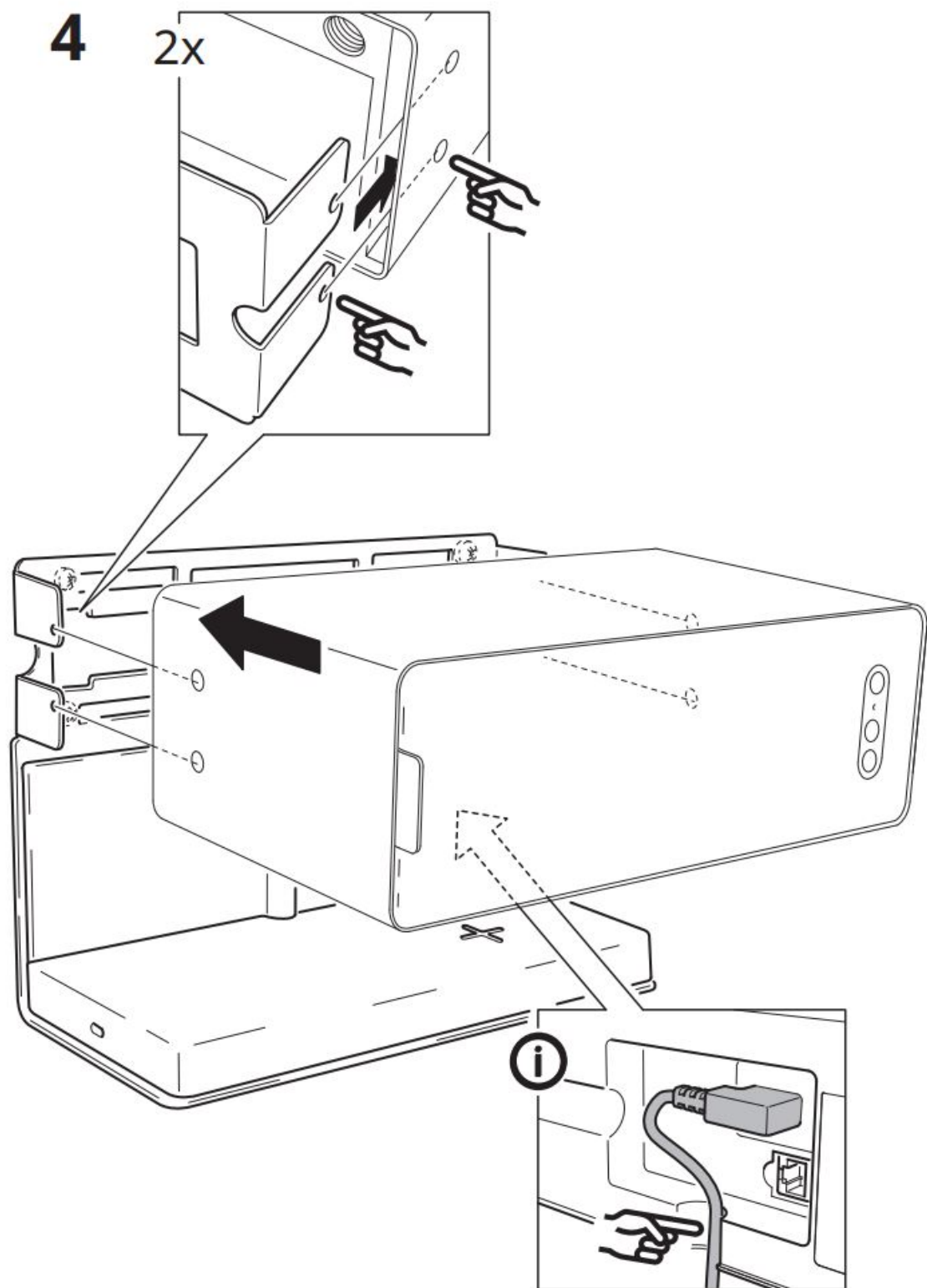


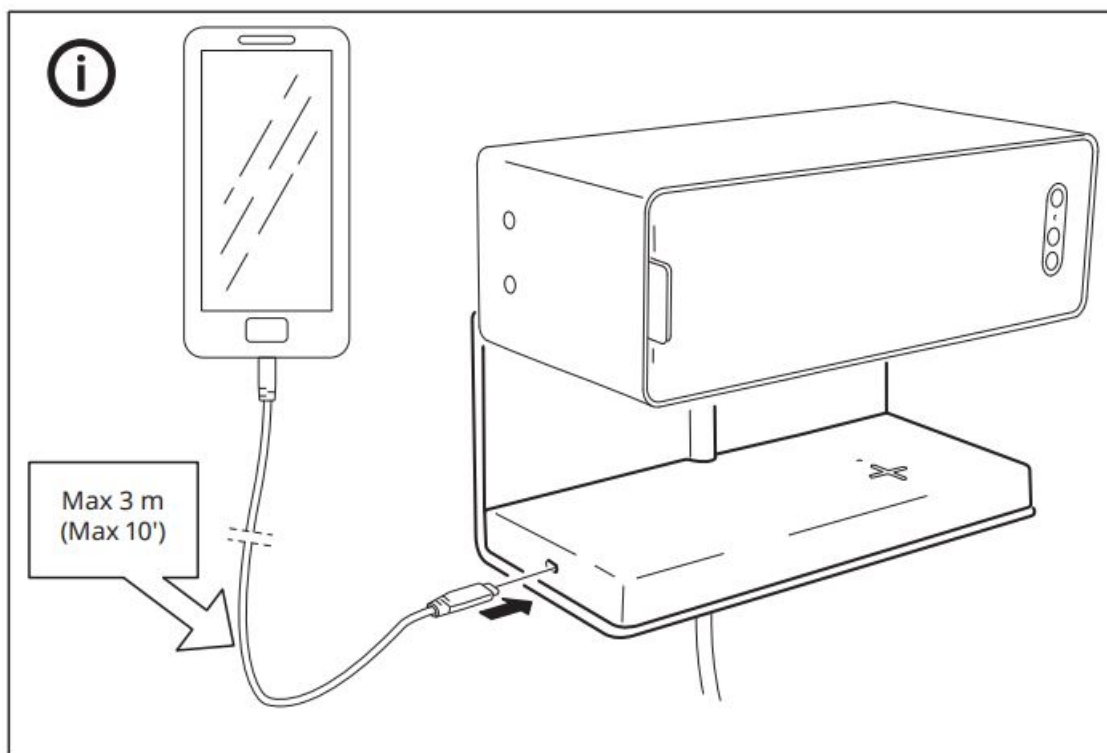
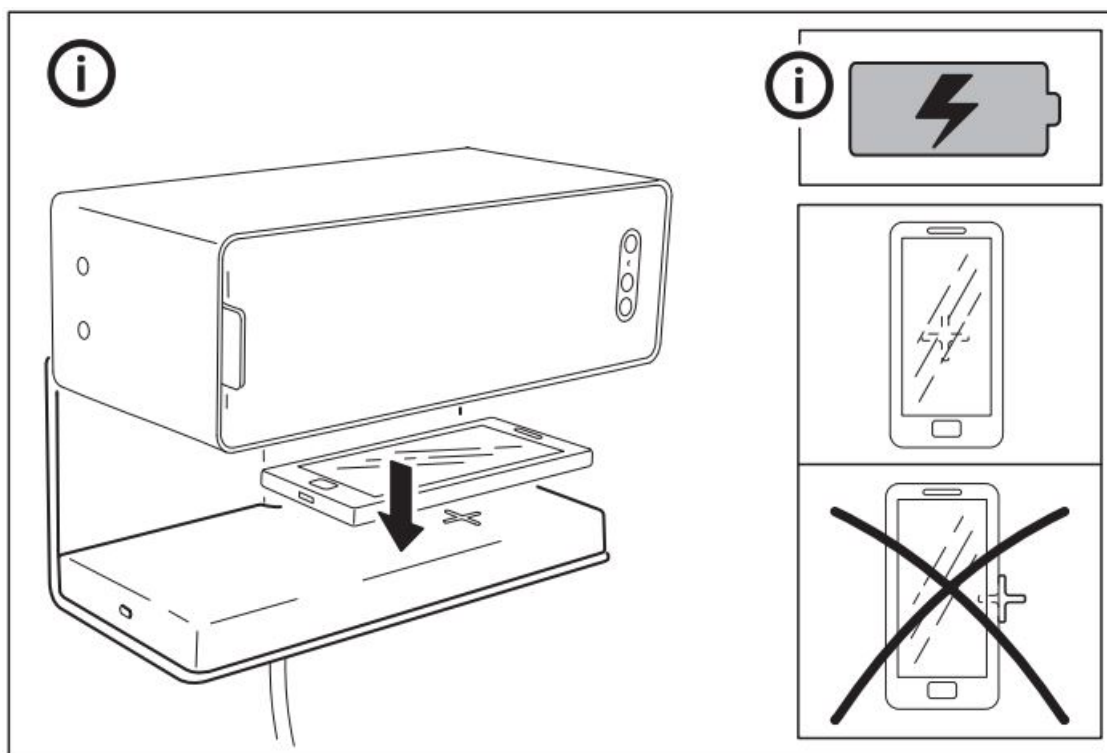
2



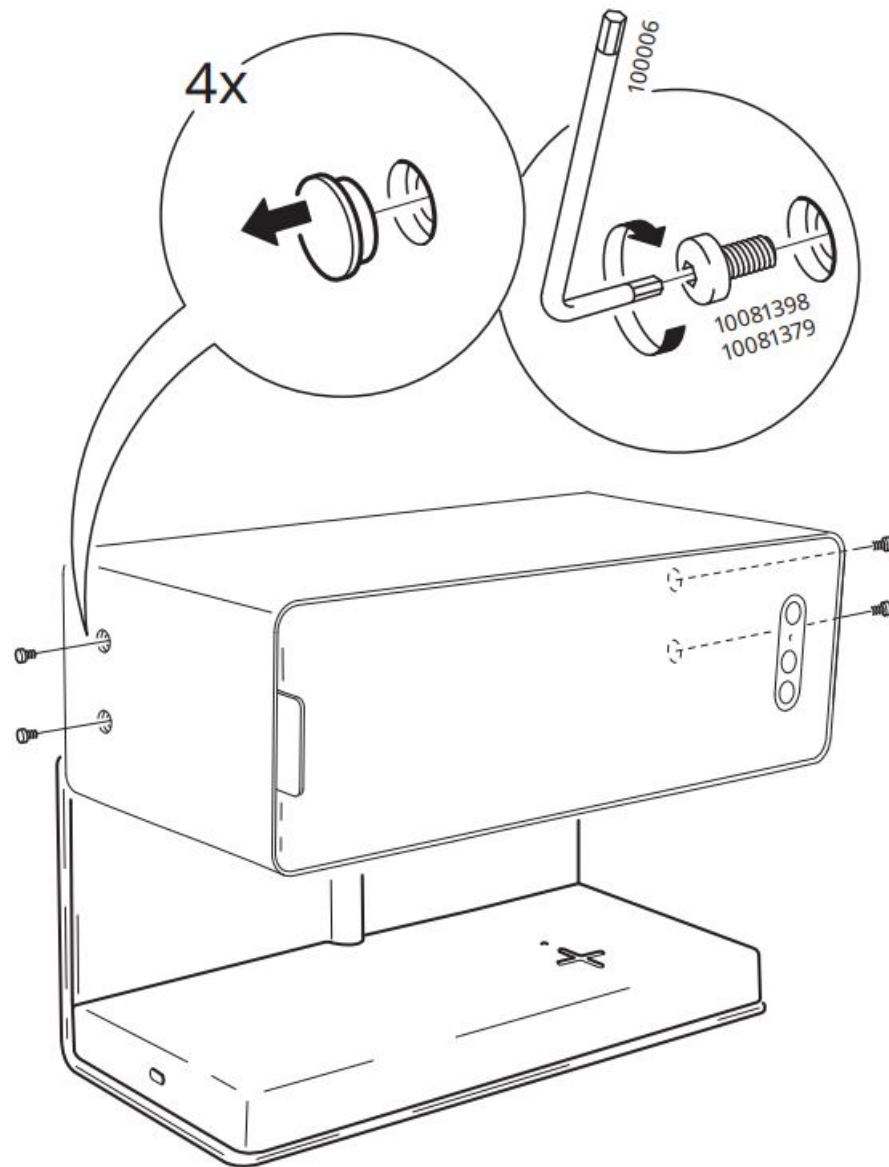
3

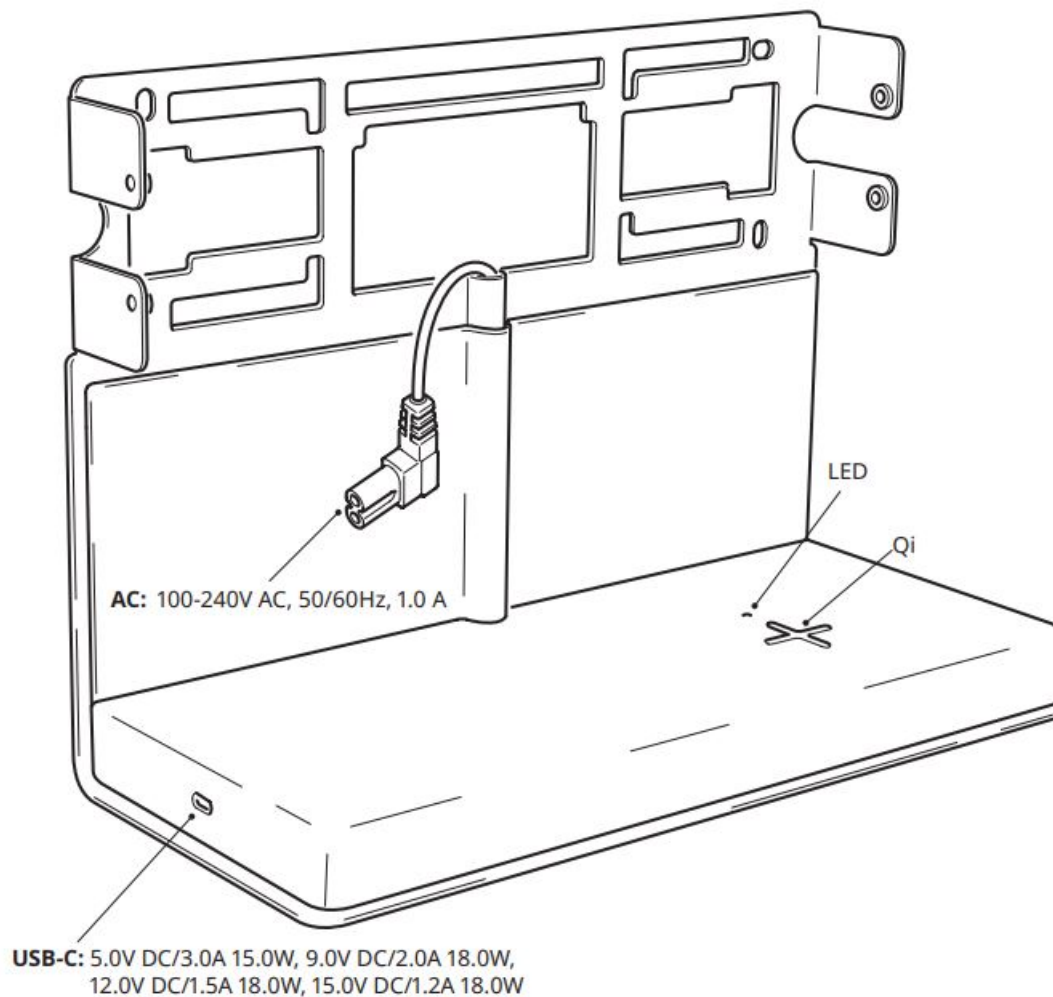






5





Contents

- [1 Charger features](#)
- [2 Instructions for use](#)
- [3 Product servicing](#)
- [4 Technical data](#)
- [5 Indoor use only](#)
- [6 Documents / Resources](#)
 - [6.1 References](#)
- [7 Related Posts](#)

Charger features

- Charges 1 wireless and 1 USB connected device simultaneously.
- USB-C outlet compatible with Power Delivery 3.0 standard (quick-charging).
- Wirelessly charges Qi-certified devices.
- Certified according to specification Qi 1.2.4 BPP.
- Temperature and power monitor for safety.
- LED status indicator for wireless charging.

Instructions for use

- Plug the power cable into the wall socket.
- For wireless charging, place the device to be charged on top of the plus sign (+) on the charger. The device must be placed directly over the plus sign (+) for the charging function to work optimally.
- If your battery is completely discharged, it may take a few minutes before it starts charging.
- For USB charging, insert the USB cable in the free slot and the other end in the device you want to charge.
- When charging, only use a recommended USB cable for your device and replace faulty cables immediately.

Wireless charging LED indicator:

Power on: LED lights up for 3 seconds.

Charging: LED on.

Charging completed: LED off.

Error: LED flashes.

Good to know

- Devices may get warm during charging. This is completely normal, and they will gradually cool down again after they are fully charged.
- Charging time may vary based on the device's battery capacity, charge level, the age of the battery and the temperature in the surrounding area.
- Charger operating temperature: 0°C to 40°C.
- USB cable length and quality influences charging speed and performance.
- Unplug the charger from the power source before cleaning and when it is not in use.
- To clean the charger, wipe with a moist cloth. Never submerge the charger in water.

Recommended precautionary measures and technical data, see the back of the charger.

Save these instructions for future use.

WARNING:

- The wall socket must be located near the equipment and must be easily accessible.
- Only use in dry locations.
- Children should be supervised to ensure they do not play with the product.
- Do not subject the devices to wet, moist or excessively dusty environments since this can cause damage to the devices.
- If the device is damaged, it should be disposed of.
- Never use a damaged or faulty USB cable for charging, since this can damage the product and your devices.
- Only wirelessly charge devices that are Qi certified.
- Maximum load on shelf: 3 kg

Product servicing

Do not attempt to repair this product yourself. If you open or remove parts, you may expose yourself to dangerous voltage points or other risks.

RF EXPOSURE INFORMATION

According to RF exposure regulations, under normal operations the end user shall refrain from being closer than 20 cm from the device.

Technical data

Model: SYMFONISK charging shelf

Type: E2122

Input: 100-240V AC, 50/60Hz, max 2.5A

Output:

AC: 100-240 V AC, 50/60Hz, 1.0A

USB-C: 5.0V DC/3.0A 15.0W, 9.0V DC/2.0A 18.0W, 12.0V DC/1.5A 18.0W, 15.0V DC/1.2A 18.0W

Qi:

Operating frequency: 110 – 148 kHz

Output power: 0 dBA /m at 10m

Indoor use only

Manufacturer: IKEA of Sweden AB

(commercial registration number: 556074-7551)

Address:

Box 702, SE-343 81 Älmhult, SWEDEN

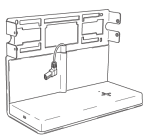

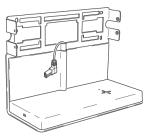



The 'Qi' symbol is a trademark of the Wireless Power Consortium



The crossed-out wheeled bin symbol indicates that the item should be disposed of separately from household waste. The item should be handed in for recycling in accordance with local environmental regulations for waste disposal. By separating a marked item from household waste, you will help reduce the volume of waste sent to incinerators or land-fill and minimize any potential negative impact on human health and the environment. For more information, please contact your IKEA store.

Documents / Resources

<p>SYMFONISK</p>  	<p>IKEA SYMFONISK Shelf with Wireless Charger [pdf] Instruction Manual SYMFONISK, Shelf with Wireless Charger, SYMFONISK Shelf with Wireless Charger</p>
<p>SYMFONISK</p>  	<p>IKEA SYMFONISK Shelf with Wireless Charger [pdf] Instruction Manual SYMFONISK, Shelf with Wireless Charger, SYMFONISK Shelf with Wireless Charger, AA-2333 149-2-100</p>

References

- [Sortere - gjør det lettere å kaste mindre og sortere mer](#)

[Manuals+](#).