



**SYMFONISK LED Qi  
Wireless Charging**



# IKEA SYMFONISK LED Qi Wireless Charging Instruction Manual

[Home](#) » [Ikea](#) » **IKEA SYMFONISK LED Qi Wireless Charging Instruction Manual** 

## Contents

- [1 IKEA SYMFONISK LED Qi Wireless Charging](#)
- [2 Product Specifications](#)
- [3 Product Usage Instructions](#)
- [4 TOOLS](#)
- [5 INSTALLATION](#)
- [6 BATTERY](#)
- [7 Charger features](#)
- [8 Instructions for use](#)
- [9 RF EXPOSURE INFORMATION](#)
- [10 Technical data](#)
- [11 Frequently Asked Questions](#)
- [12 Documents / Resources](#)
  - [12.1 References](#)
- [13 Related Posts](#)



**IKEA SYMFONISK LED Qi Wireless Charging**



## Product Specifications

- **Model:** SYMFONISK charging shelf
- **Type:** E2122
- **Input:** 100-240V AC, 50/60Hz, max 2.5A
- **Output:**
  - **AC:** 100-240 V AC, 50/60Hz, 1.0A
  - **USB-C:** 5.0V DC/3.0A 15.0W, 9.0V DC/2.0A 18.0W, 12.0V DC/1.5A 18.0W, 15.0V DC/1.2A 18.0W
- **Qi:** Operating frequency: 110 – 148 kHz Output power: 0 dBA /m at 10m Indoor use only
- **Manufacturer:** IKEA of Sweden AB (commercial registration number: 556074-7551)

## Product Usage Instructions

- **Wireless Charging LED Indicator:**

- **Power on:** LED lights up for 3 seconds.
- **Charging:** LED on.
- **Charging completed:** LED off.
- **Error:** LED flashes.

## Precautionary Measures

- Recommended precautionary measures and technical data are available on the back of the charger.

## Product Servicing

- Do not attempt to repair this product yourself. Opening or removing parts may expose you to dangerous voltage points or other risks.

## RF Exposure Information

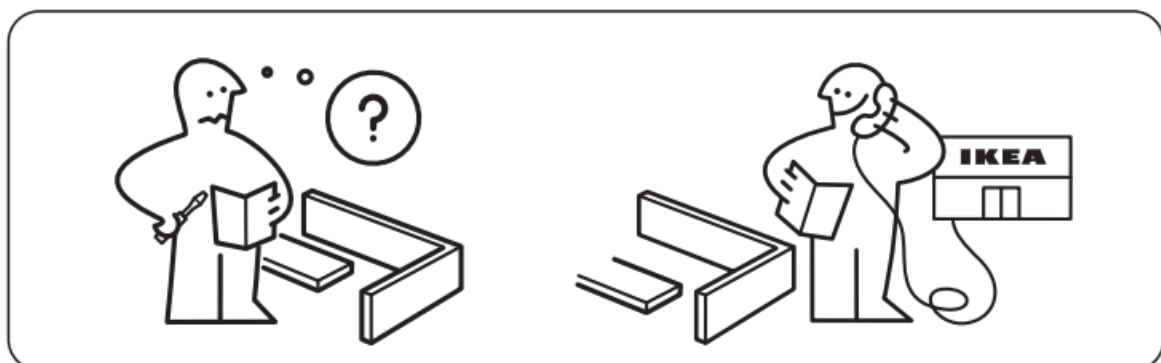
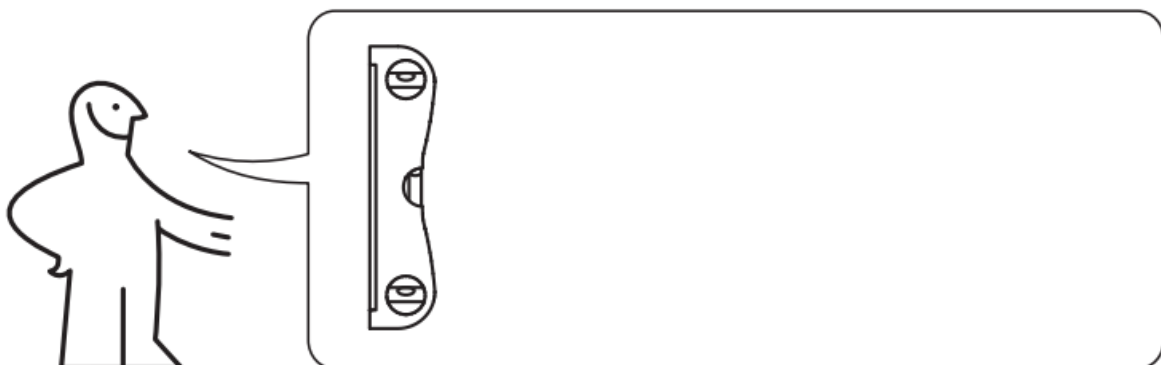
- According to RF exposure regulations, do not be closer than 20 cm from the device during normal operations.

## Disposal Information

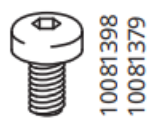
- The crossed-out wheeled bin symbol indicates that the item should be disposed of separately from household waste according to local environmental regulations.

As wall materials vary, screws for fixing to wall are not included. For advice on suitable screw systems, contact your local specialised dealer.

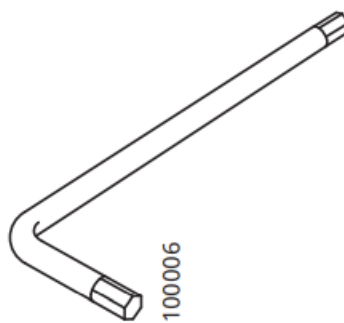
## INFO



## TOOLS



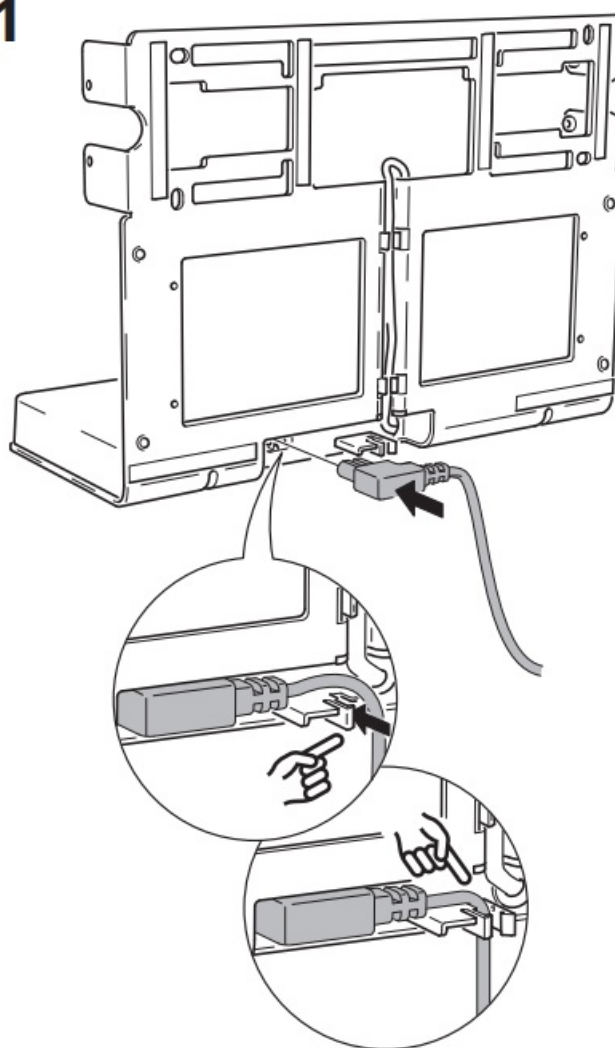
4x



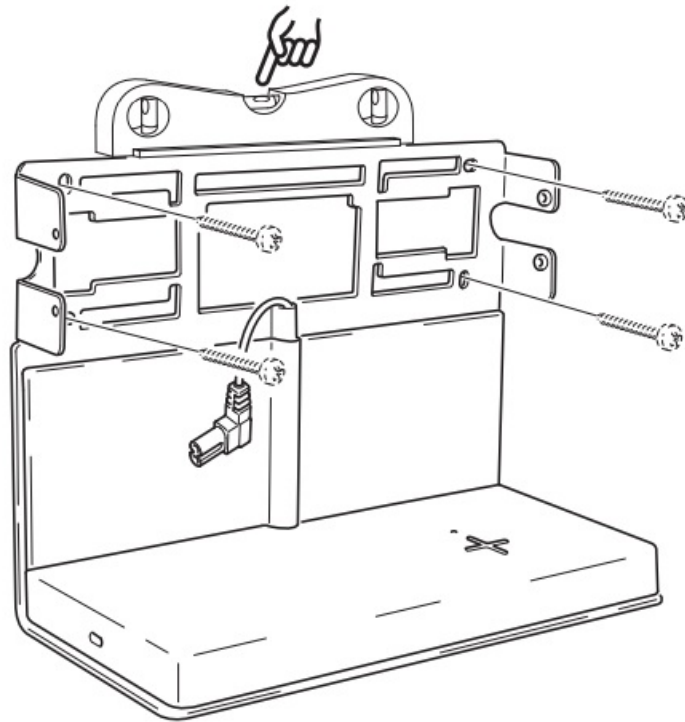
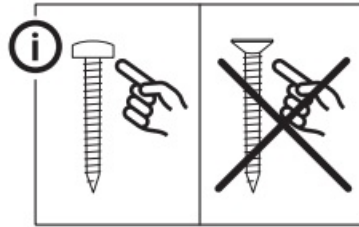
1x

## INSTALLATION

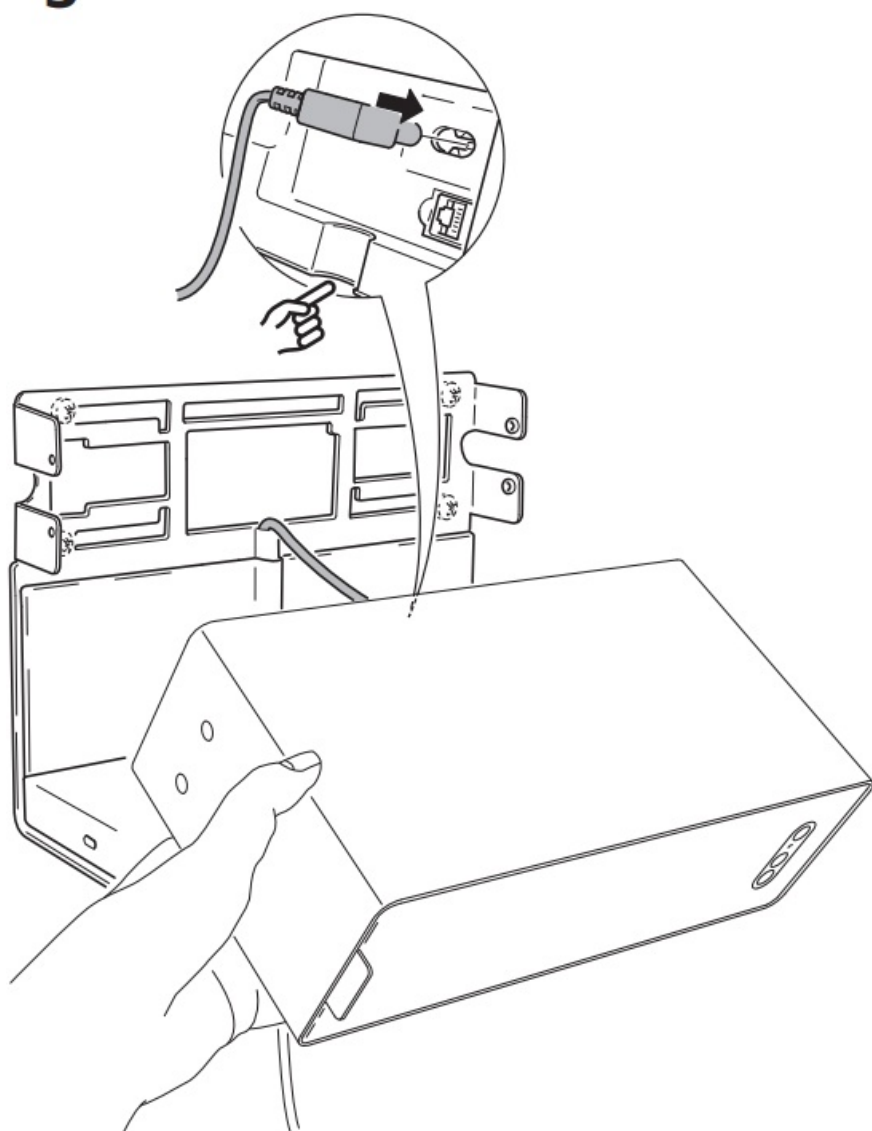
1



2

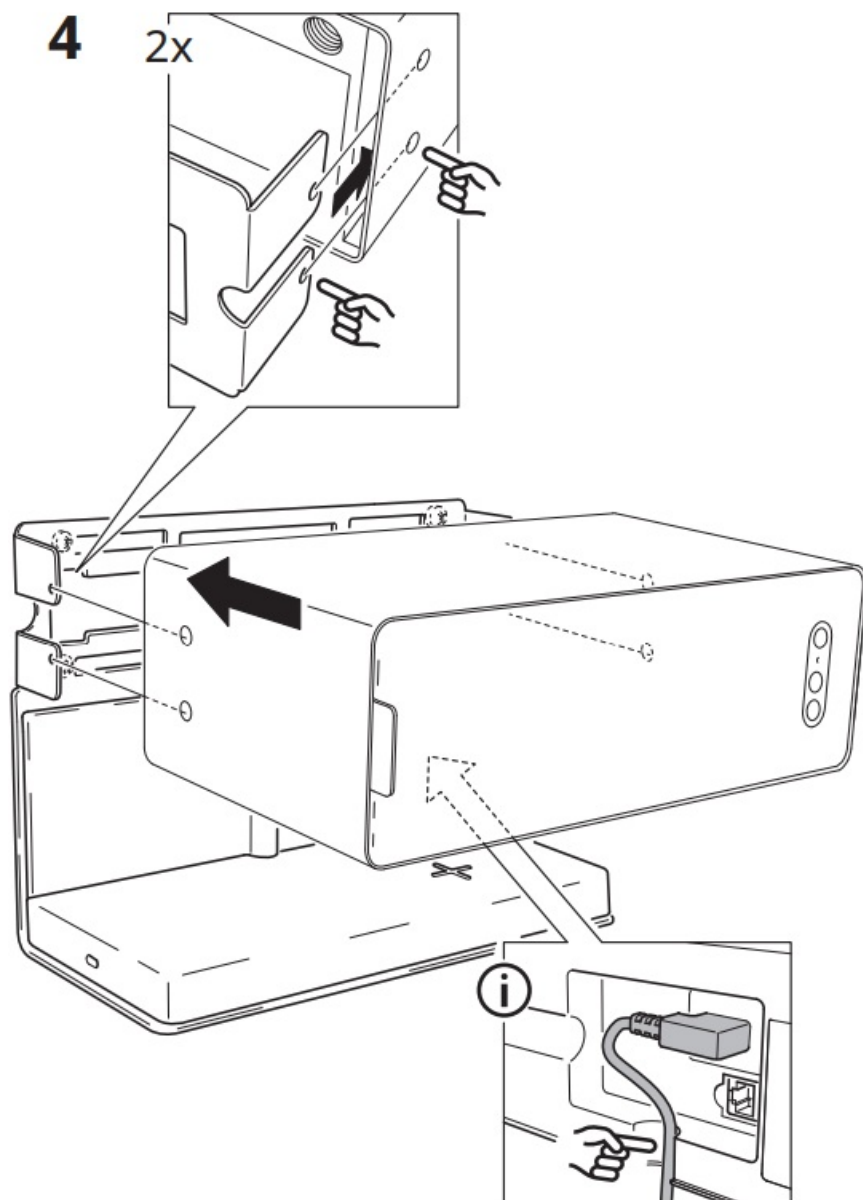


3

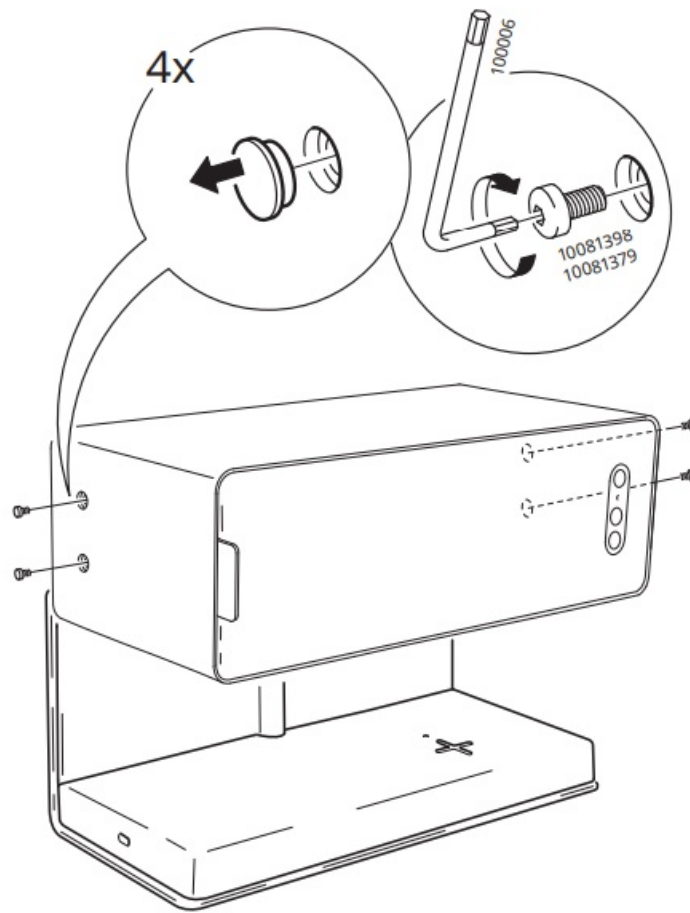


4

2x

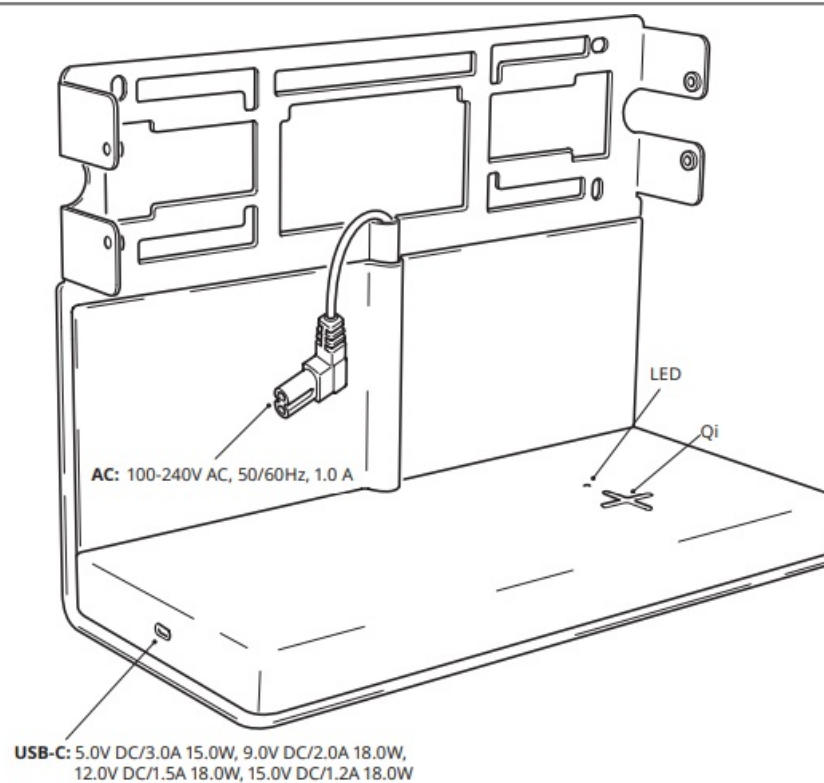
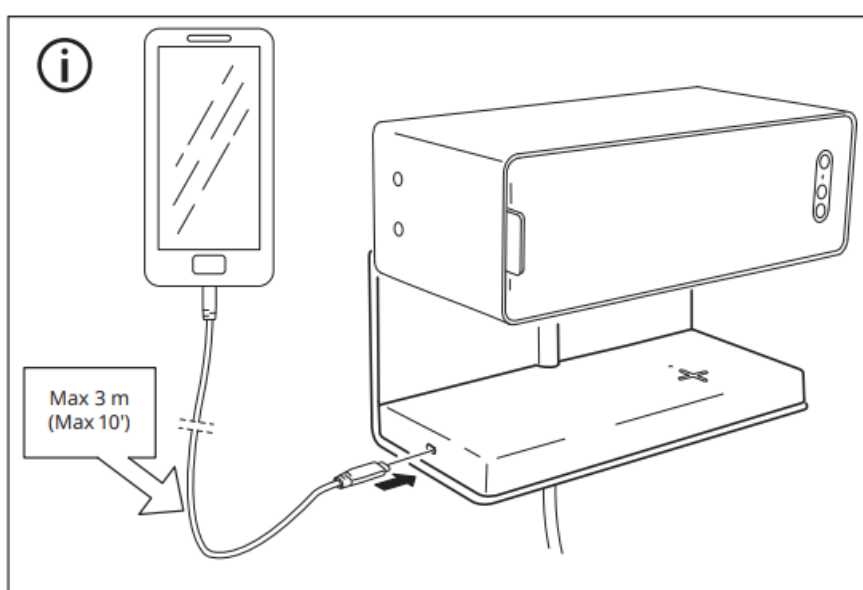
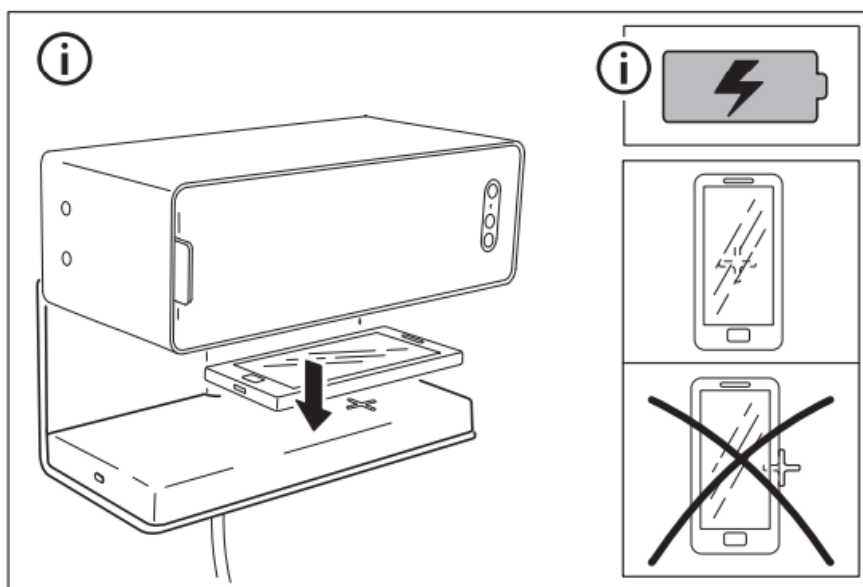


5



**BATTERY**





## Charger features

- Charges 1 wireless and 1 USB connected device simultaneously.
- USB-C outlet compatible with Power Delivery 3.0 standard (quick-charging).
- Wirelessly charges Qi-certified devices.
- Certified according to specification Qi 1.2.4 BPP.
- Temperature and power monitor for safety.
- LED status indicator for wireless charging.

## Instructions for use

- Plug the power cable into the wall socket.
- For wireless charging, place the device to be charged on top of the plus sign (+) on the charger. The device must be placed directly over the plus sign (+) for the charging function to work optimally.
- If your battery is completely discharged, it may take a few minutes before it starts charging.
- For USB charging, insert the USB cable in the free slot and the other end in the device you want to charge.
- When charging, only use a recommended USB cable for your device and replace faulty cables immediately.

### Wireless charging LED indicator:

- **Power on:** LED lights up for 3 seconds.
- **Charging:** LED on.
- **Charging completed:** LED off.
- **Error:** LED flashes.

## Good to know

- Devices may get warm during charging. This is completely normal, and they will gradually cool down again after they are fully charged.
- Charging time may vary based on the device's battery capacity, charge level, the age of the battery, and the temperature in the surrounding area.
- Charger operating temperature: 0°C to 40°C.
- USB cable length and quality influence charging speed and performance.
- Unplug the charger from the power source before cleaning and when it is not in use.
- To clean the charger, wipe it with a moist cloth. Never submerge the charger in water.

For recommended precautionary measures and technical data, see the back of the charger.

Save these instructions for future use.

## WARNING

- The wall socket must be located near the equipment and must be easily accessible.
- Only use in dry locations.
- Children should be supervised to ensure they do not play with the product.

- Do not subject the devices to wet, moist or excessively dusty environments since this can cause damage to the devices.
- If the device is damaged, it should be disposed of.
- Never use a damaged or faulty USB cable for charging, since this can damage the product and your devices.
- Only wirelessly charge devices that are Qi-certified.
- Maximum load on the shelf: 3 kg

## Product Servicing

- Do not attempt to repair this product yourself.
- If you open or remove parts, you may expose yourself to dangerous voltage points or other risks.

## RF EXPOSURE INFORMATION

According to RF exposure regulations, under normal operations the end user shall refrain from being closer than 20 cm from the device.

## Technical data

- **Model:** SYMFONISK charging shelf
- **Type:** E2122
- **Input:** 100-240V AC, 50/60Hz, max 2.5A

### Output:

- **AC:** 100-240 V AC, 50/60Hz, 1.0A
- **USB-C:** 5.0V DC/3.0A 15.0W, 9.0V DC/2.0A 18.0W, 12.0V DC/1.5A 18.0W, 15.0V DC/1.2A 18.0W

### Qi:

- **Operating frequency:** 110 – 148 kHz
- **Output power:** 0 dBμA /m at 10m

### Indoor use only

- **Manufacturer:** IKEA of Sweden AB (commercial registration number: 556074-7551)
- **Address:** Box 702, SE-343 81 Älmhult, SWEDEN

The 'Qi' symbol is a trademark of the Wireless Power Consortium

The crossed-out wheeled bin symbol indicates that the item should be disposed of separately from household waste. The item should be handed in for recycling per local environmental regulations for waste disposal. By separating a marked item from household waste, you will help reduce the volume of waste sent to incinerators or landfills and minimize any potential negative impact on human health and the environment. For more information, please contact your IKEA store.

## Frequently Asked Questions

- **Are screws included for wall mounting?**

- No, screws for wall mounting are not included due to variations in wall materials. Contact your local specialized dealer for advice on suitable screw systems.

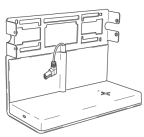
- **Can I repair the product myself?**

- No, do not attempt to repair the product yourself as it may expose you to dangerous voltage points or risks.

- **What does the LED indicator signify?**

- The LED indicator shows different statuses like power on, charging, charging completed, and error conditions.

## Documents / Resources

 <p>SYMFONISK</p>	<p><a href="#">IKEA SYMFONISK LED Qi Wireless Charging</a> [pdf] Instruction Manual SYMFONISK, SYMFONISK LED Qi Wireless Charging, LED Qi Wireless Charging, Qi Wireless Charging, Wireless Charging, Charging</p>
--	--

## References

- [User Manual](#)

### [Manuals+](#), [Privacy Policy](#)

This website is an independent publication and is neither affiliated with nor endorsed by any of the trademark owners. The "Bluetooth®" word mark and logos are registered trademarks owned by Bluetooth SIG, Inc. The "Wi-Fi®" word mark and logos are registered trademarks owned by the Wi-Fi Alliance. Any use of these marks on this website does not imply any affiliation with or endorsement.