



IKEA SYMFONISK Audio Remote Control Instruction Manual

[Home](#) » [Ikea](#) » **IKEA SYMFONISK Audio Remote Control Instruction Manual** 

Contents

- [1 IKEA SYMFONISK Audio Remote Control](#)
- [2 Product Information](#)
- [3 Product Usage Instructions](#)
- [4 SYMFONISK sound remote overview](#)
- [5 PACKAGE CONTENT](#)
- [6 INSTRUCTION](#)
- [7 Getting started](#)
- [8 Sound remote functions](#)
- [9 Care instructions](#)
- [10 Technical data](#)
- [11 Documents / Resources](#)
 - [11.1 References](#)
- [12 Related Posts](#)



IKEA SYMFONISK Audio Remote Control



Product Information

Specifications

- Model: SYMFONISK sound remote gen 2
- Type: E2123
- Input: 2.4V, 2 x LADDA HR03 AAA 1.2V batteries
- Range: 10 m unobstructed
- For indoor use only
- Operating frequency: 2400-2483.5 MHz
- Output power: 3 dBm (EIRP)
- Manufacturer: IKEA of Sweden AB

Product Usage Instructions

Getting Started

To get started with your SYMFONISK sound remote, follow these steps:

1. Insert 2 HR03 AAA 1.2V batteries with correct polarity.
2. Start the IKEA Home smart app on your device.
3. Follow the instructions in the app to set up your device and add scenes to the shortcut buttons.
4. Close the battery lid.

Your sound remote is now ready for use.

Sound Remote Functions

- **Play/Pause:** Press once to start or stop the music.
- **Repeat:** Press once to repeat the most recently played music.
- **Skip:** Press once to skip to the next track.

- **Raise and lower volume:** Press and hold to change the volume rapidly.
- **Shortcut buttons:** Used to change the playlist being streamed to the speakers.

Care Instructions

To clean the sound remote, follow these instructions:

1. Wipe with a soft moistened cloth.
2. Use another soft, dry cloth to wipe dry.

Changing the Batteries

When it's time to replace the batteries, follow these steps:

1. The red LED indicator on the back of the sound remote will flash when you use it.
2. Open the battery lid.
3. Replace the batteries with 2 new HR03 AAA 1.2V batteries.

Important Safety Information

WARNING!

Risk of explosion if either battery is replaced by an incorrect type. Dispose of used batteries according to the instructions.

IMPORTANT!

Recommended batteries: Batteries are sold separately. We recommend 2 x LADDA rechargeable HR03 AAA 1.2V batteries. Do not mix batteries of different capacities, types, or date stamps.

Save these instructions for future use.

Frequently Asked Questions (FAQ)

Q: What is the SYMFONISK sound remote designed for?

A: The SYMFONISK sound remote is designed to work together with IKEA gateway or hub and control your SYMFONISK speakers.

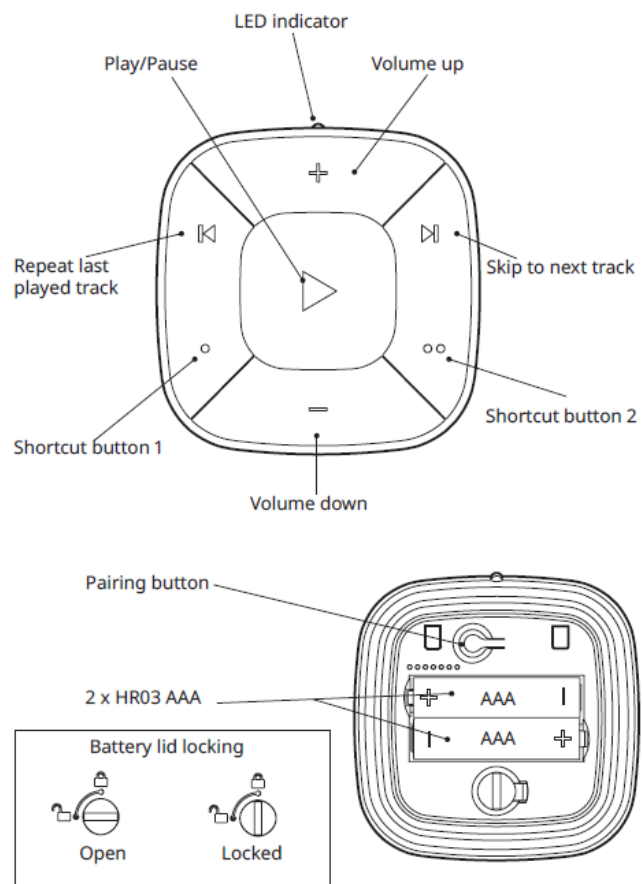
Q: Can I add other Works with IKEA Home smart products directly to the sound remote?

A: No, you cannot add Works with IKEA Home smart marked products directly to your sound remote.

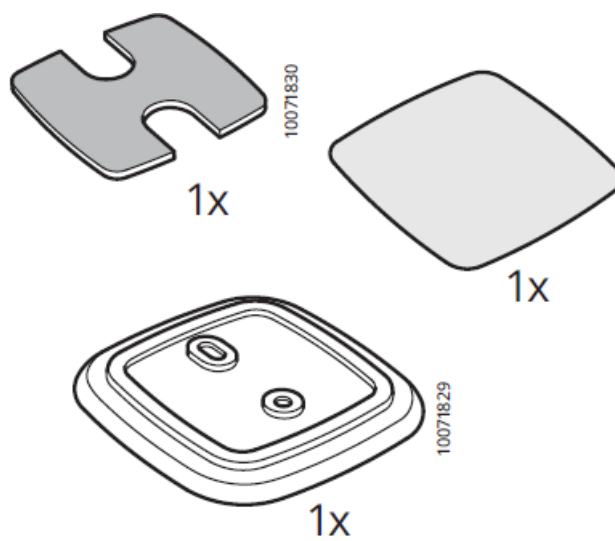
Q: How do I install the SYMFONISK sound remote and other Works with IKEA Home smart devices?

A: If you have an Apple device, go to the App Store and download the IKEA Home smart app. The app will guide you through the installation process. If you have an Android device, go to the Google Play store and download the IKEA Home smart app. The app will also guide you through the installation process.

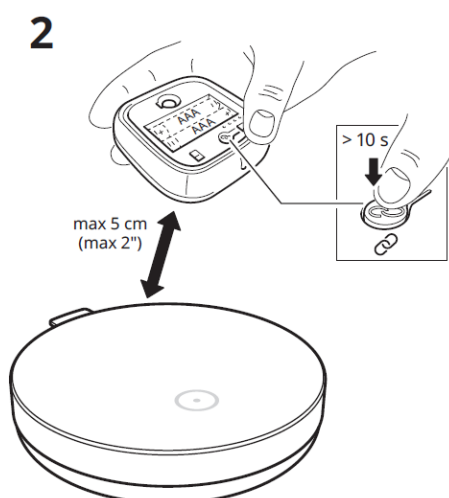
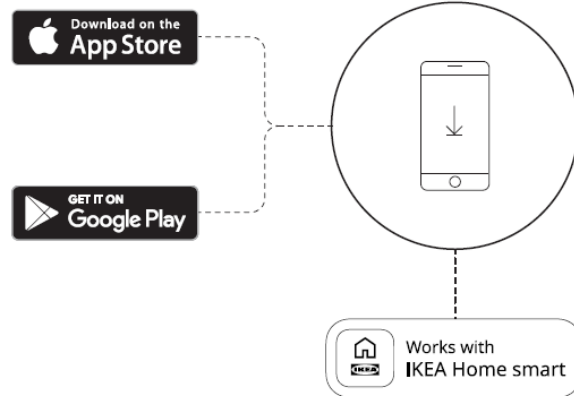
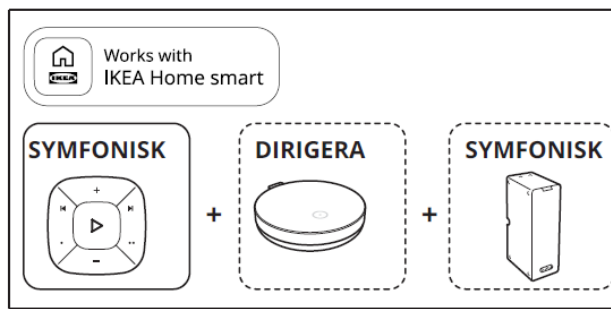
SYMFONISK sound remote overview

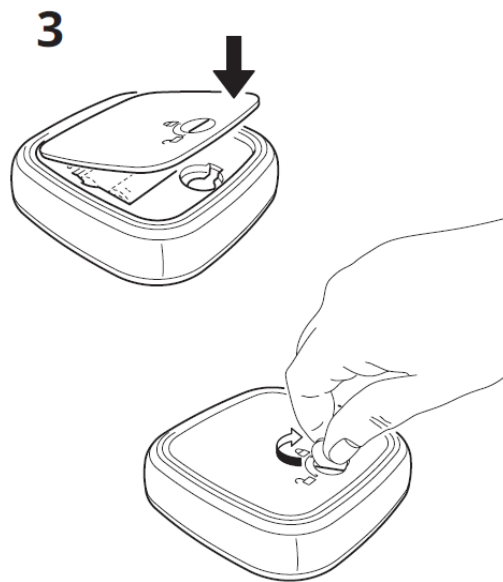


PACKAGE CONTENT



INSTRUCTION





IMPORTANT

SYMFONISK sound remote is made to work together with IKEA gateway or hub and control your SYMFONISK speakers.

Use the IKEA Home smart app to add more functions to your sound remote.

You cannot add “Works with IKEA Home smart” marked products directly to your sound remote.

If you have an Apple device

Go to the App Store and download the IKEA Home smart app. The app will take you through the process of installing your SYMFONISK sound remote and other “Works with IKEA Home smart” devices.

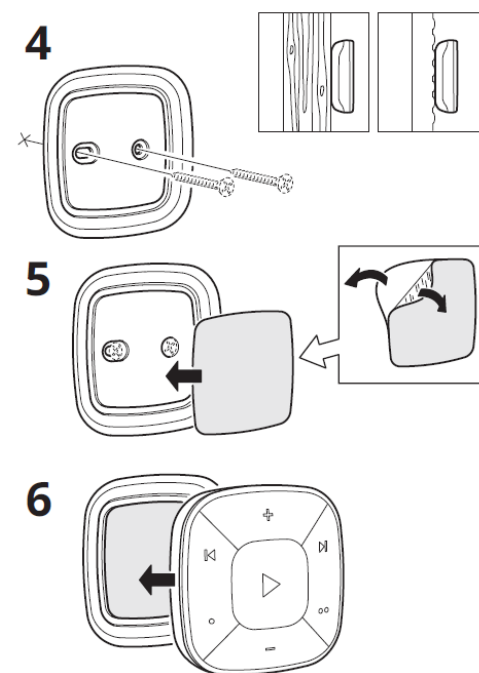
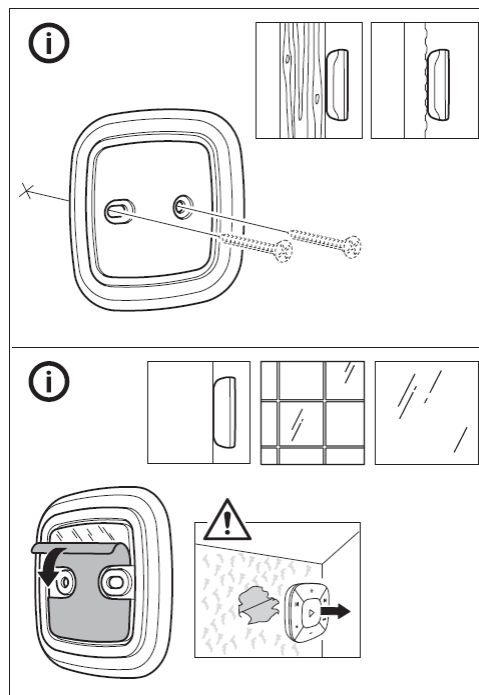
If you have an Android device

Go to the Google Play store and download the IKEA Home smart app. The app will take you through the process of installing your SYMFONISK sound remote and other “Works with IKEA Home smart” devices.

Getting started

Insert 2 HR03 AAA 1.2V batteries with correct polarity. Start the IKEA Home smart app and follow the instructions in the app on how to set up your device and add scenes to the shortcut buttons.

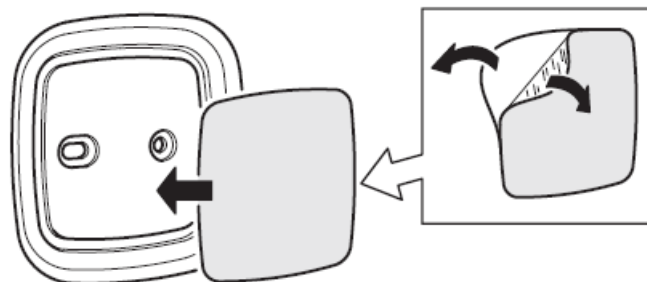
Close the battery lid and your sound remote is now ready for use.



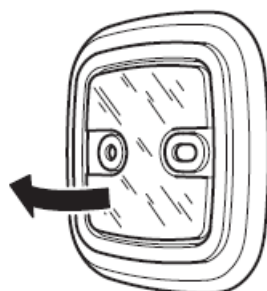
6



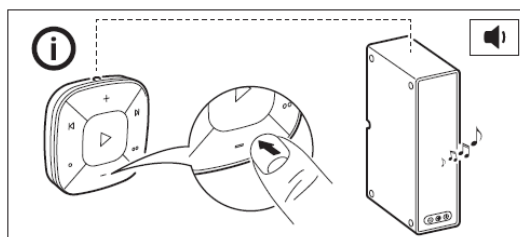
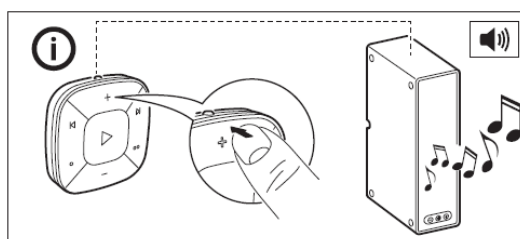
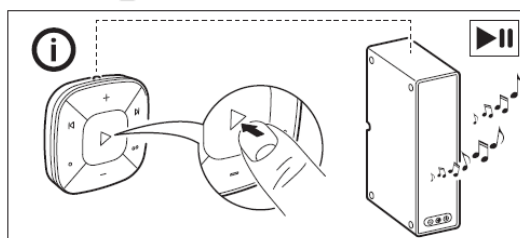
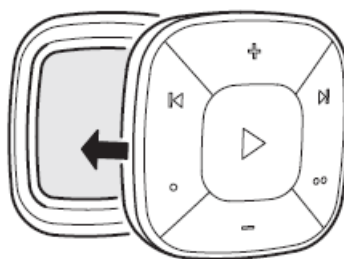
7

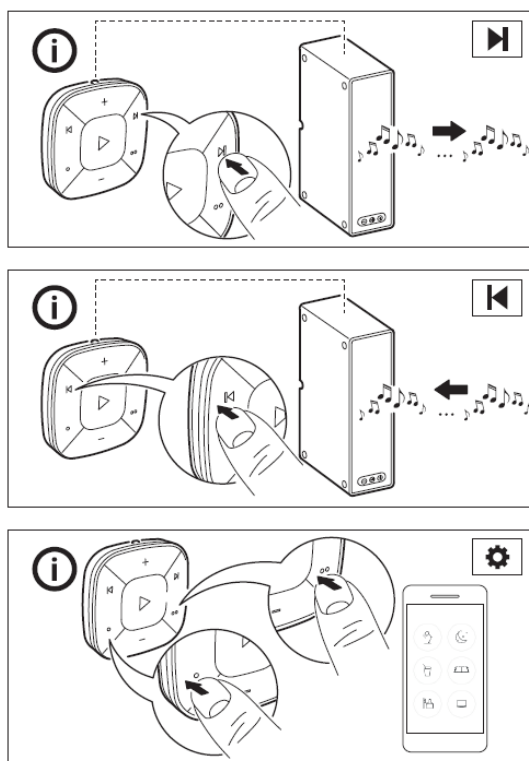


8



9





Sound remote functions

Play/pause ▶

Press once to start or stop the music.

Repeat ◀

Press once to repeat the most recently played music.

Skip ▶▶

Press once to skip to the next track.

Raise and lower volume +

Press and hold to change the volume rapidly.

Shortcut buttons ○ ○

Used to change the playlist being streamed to the speakers.

Care instructions

To clean the sound remote, wipe with a soft moistened cloth, Use another soft, dry cloth to wipe dry.

Changing the batteries

When SYMFONISK sound remote is used regularly and as intended, the batteries will last for approximately 2 years.

When it's time to replace the batteries, the red LED indicator on the back of the sound remote will flash when you use it.

Open the battery lid and replace the batteries with 2 new HR03 AAA 1.2V batteries.

WARNING!

Risk of explosion if either battery is replaced by an incorrect type. Dispose of used batteries according to the instructions.

IMPORTANT!

- SYMFONISK sound remote is for indoor use only and can be used in temperatures ranging from 0 °C to 40 °C (32°F to 104°F).
- Do not leave SYMFONISK sound remote in direct sunlight or near any heat source, as it may overheat.
- The range between SYMFONISK sound remote and the receiver is measured in open air.
- Different building materials and placement of the units can affect the wireless connectivity range.

Recommended batteries:

Batteries are sold separately. We recommend 2 x LADDA rechargeable batteries HR03 AAA 1.2V
Do not mix batteries of different capacities, types or date stamps.

Save these instructions for future use.

Technical data

- Model: SYMFONISK sound remote gen 2
- Type: E2123
- Input: 2.4V, 2 x LADDA batteries HR03 AAA 1.2V
- Range: 10 m unobstructed

For indoor use only

- Operating frequency: 2400-2483.5 Mhz
- Output power: 3 dBm (EIRP)
- Manufacturer: IKEA of Sweden AB
- Address: Box 702, SE-343 81 Älmhult, SWEDEN

This device complies with Part 15 of the FCC Rules/Innovation Science and Economic Development Canada's licence-exempt RSS standard(s). Operation is subject to the following two conditions:

1. this device may not cause harmful interference, and
2. this device must accept any interference received, including interference that may cause undesired operation of the device.

WARNING:

Any changes or modifications to this unit not expressly approved by the party responsible for compliance could void the user's authority to operate the equipment.

NOTE:

This equipment has been tested and found to comply with the limits for a Class B digital device, pursuant to part 15 of the FCC Rules. These limits are designed to provide reasonable protection against harmful interference in a residential installation.

This equipment generates, uses and can radiate radio frequency energy and, if not installed and used in

accordance with the instructions, may cause harmful interference to radio communications. However, there is no guarantee that interference will not occur in a particular installation. If this equipment does cause harmful interference to radio or television reception, which can be determined by turning the quipment off and on, the user is encouraged to try to correct the interference by one or more of the following measures:

- Reorient or relocate the receiving antenna.
- Increase the separation between the equipment and receiver.
- Connect the equipment into an outlet on a circuit different from that to which the receiver is connected.
- Consult the dealer or an experienced radio/TV technician for help.

RF EXPOSURE INFORMATION

This product is approved as a portable handheld device (not body worn)

This product includes a static magnet, generating a magnetic field that might interfere with the normal operation of pacemakers, defibrillators, or other medical devices.

Maintain a safe distance of separation between your medical device and this device. Stop using this device and consult your physician or medical device manufacturer if you believe that it is interfering with your medical device.

License rights and limitations

NO RIGHTS OR LICENSES, EXPRESS NO RIGHTS OR LICENSES, EXPRESS OR IMPLIED, ARE GRANTED TO USE THIRD-PARTY DEVICES IN COMBINATION WITH THESE PRODUCTS IN A WIRELESS MESH NETWORK, OR TO USE THIRD-PARTY SERVICES TO ACCESS, MONITOR OR CONTROL THESE PRODUCTS IN A WIRELESS MESH NETWORK VIA THE INTERNET OR ANOTHER EXTERNAL WIDE AREA NETWORK.

For use pursuant to U.S. Patent Nos.:

US 6,914,893

US 7,697,492


US 8,964,708

The crossed-out wheeled bin symbol indicates that the item should be disposed of separately from household waste. The item should be handed in for recycling in accordance with local environmental regulations for waste disposal. By separating a marked item from household waste, you will help reduce the volume of waste sent to incinerators or land-fill and minimize any potential negative impact on human health and the environment. For more information, please contact your IKEA store.

MX

Importador/Distribuidor: IKEA Supply Mexico, S.A. de C.V.,

Documents / Resources

 <p>SYMFONISK</p>	<p>IKEA SYMFONISK Audio Remote Control [pdf] Instruction Manual</p> <p>305.273.12, Gen 2, SYMFONISK, SYMFONISK Audio Remote Control, Audio Remote Control, Remote Control, Control</p>
---	--

References

- [User Manual](#)

[Manuals+](#), [Privacy Policy](#)