



IKEA STOFTMOLN LED Ceiling Lamp Instruction Manual

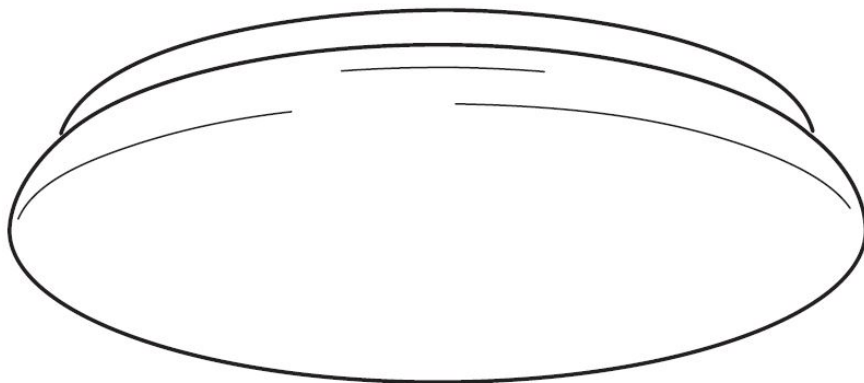
[Home](#) » [Ikea](#) » IKEA STOFTMOLN LED Ceiling Lamp Instruction Manual 

Contents

- [1 IKEA STOFTMOLN LED Ceiling Lamp](#)
- [2 IMPORTANT INSTRUCTIONS!](#)
- [3 Light Source](#)
- [4 Customer Support](#)
- [5 Operating Instructions](#)
- [6 Button/Clipping Functions](#)
- [7 Electrical Connections](#)
- [8 Documents / Resources](#)
- [9 Related Posts](#)



IKEA STOFTMOLN LED Ceiling Lamp



IMPORTANT INSTRUCTIONS!

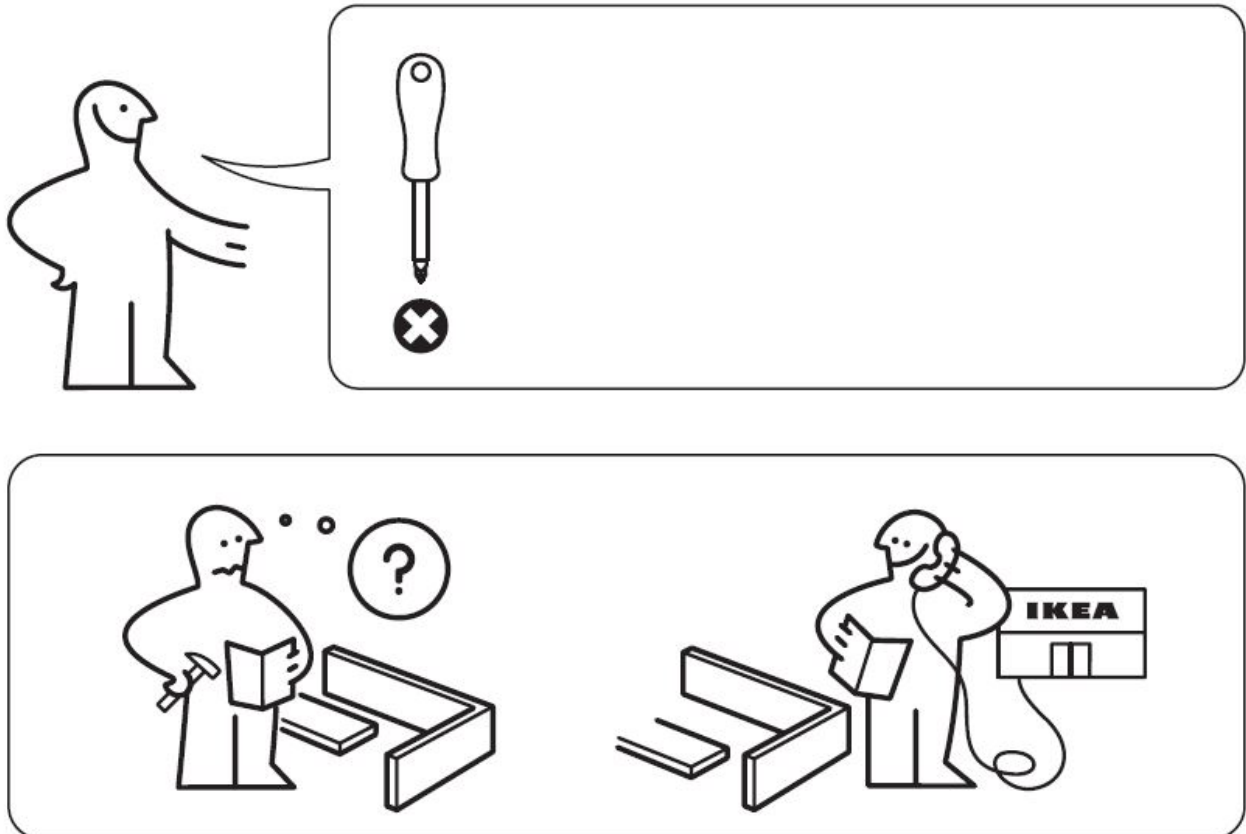
Always shut off power to the circuit before starting installation work. In some countries electrical installation work

may only be carried out by a authorised electrical contractor. Contact your local electricity authority for advice. Different materials require different types of fittings. Always choose screws and plugs that are specially suited to the material.

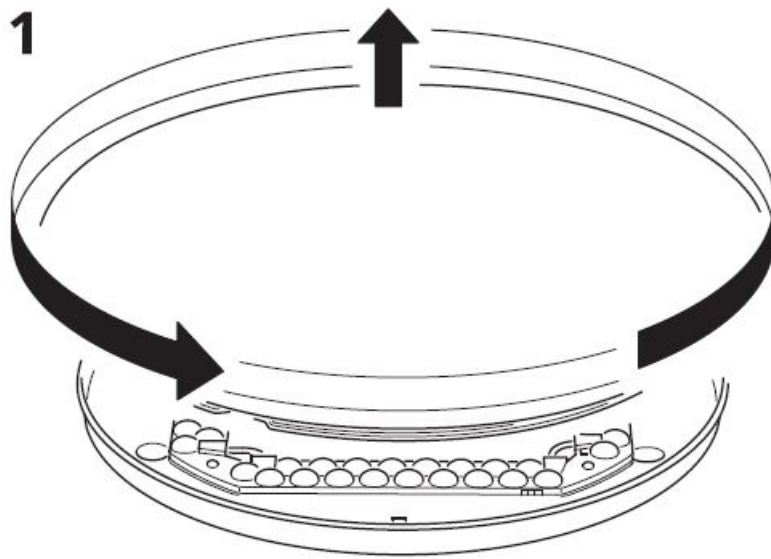
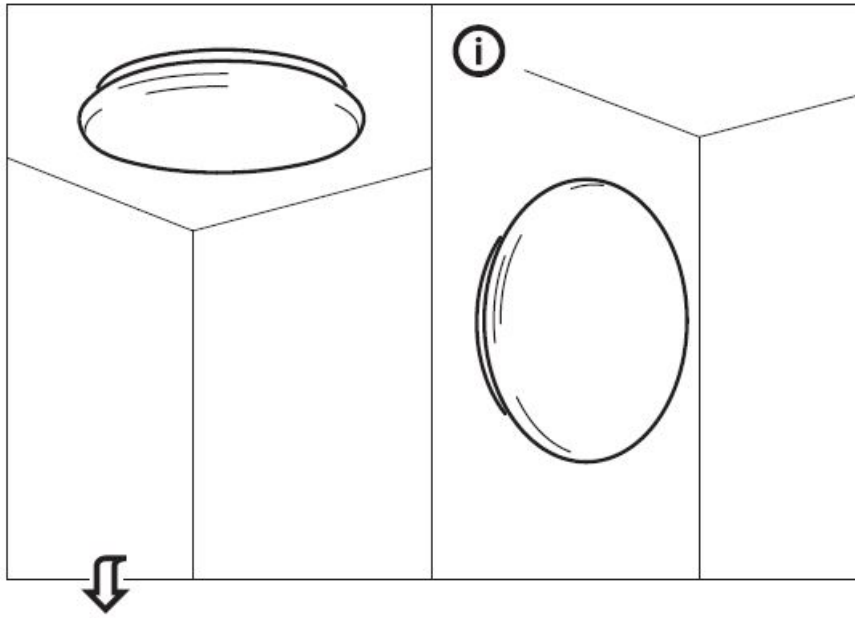
Light Source

The light source of this luminaire is not replaceable; when the light source reaches its end of life the whole luminaire shall be replaced.

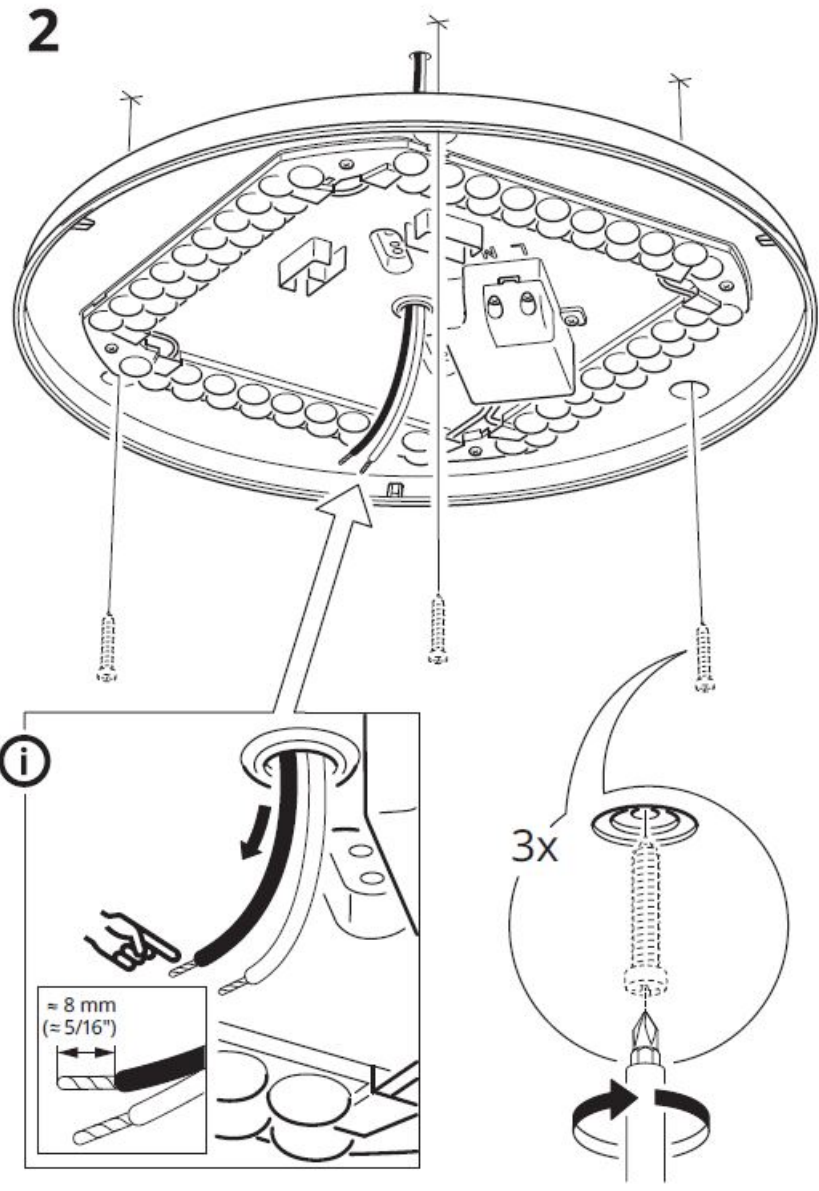
Customer Support



Operating Instructions

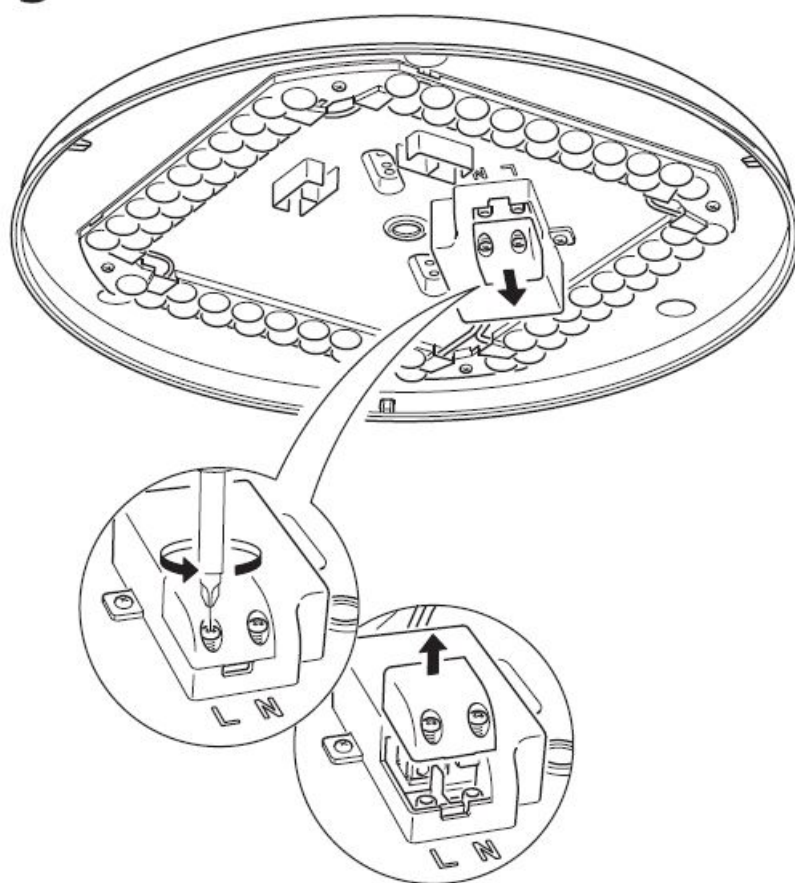


2

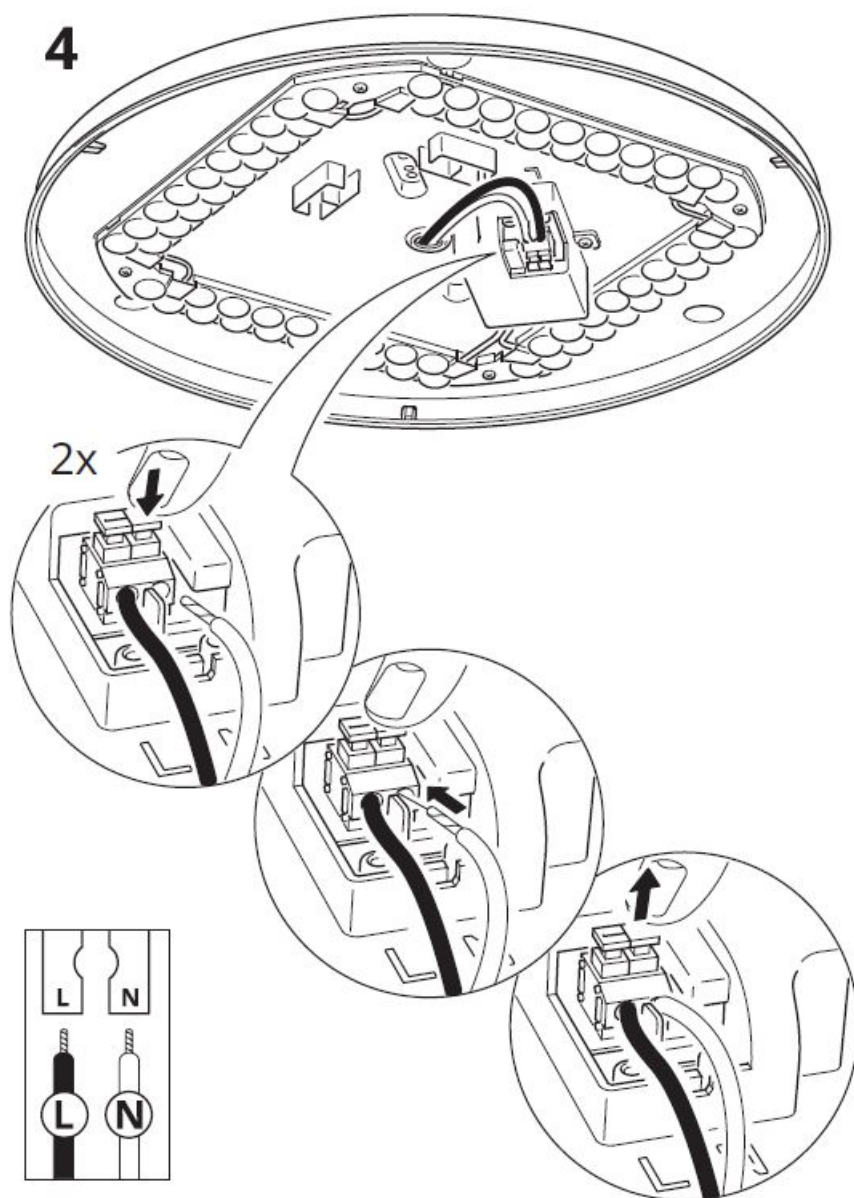


Button/Clipping Functions

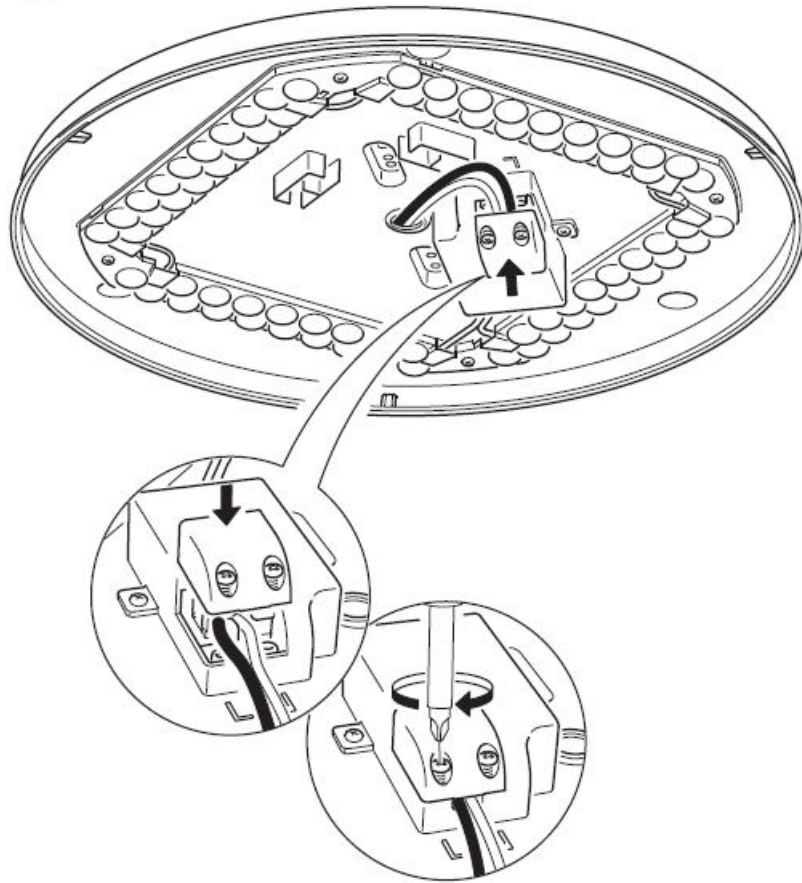
3



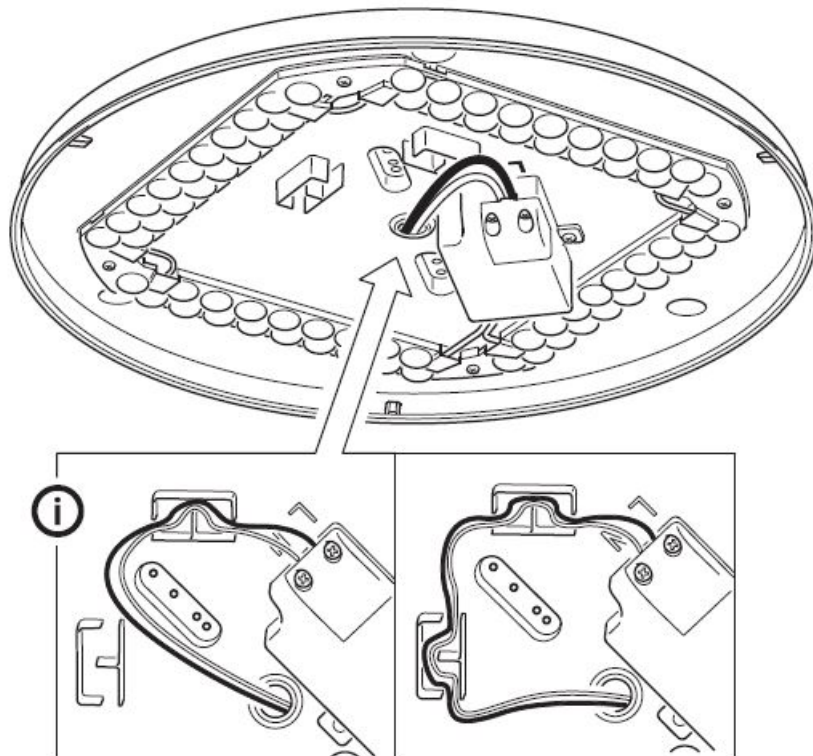
4



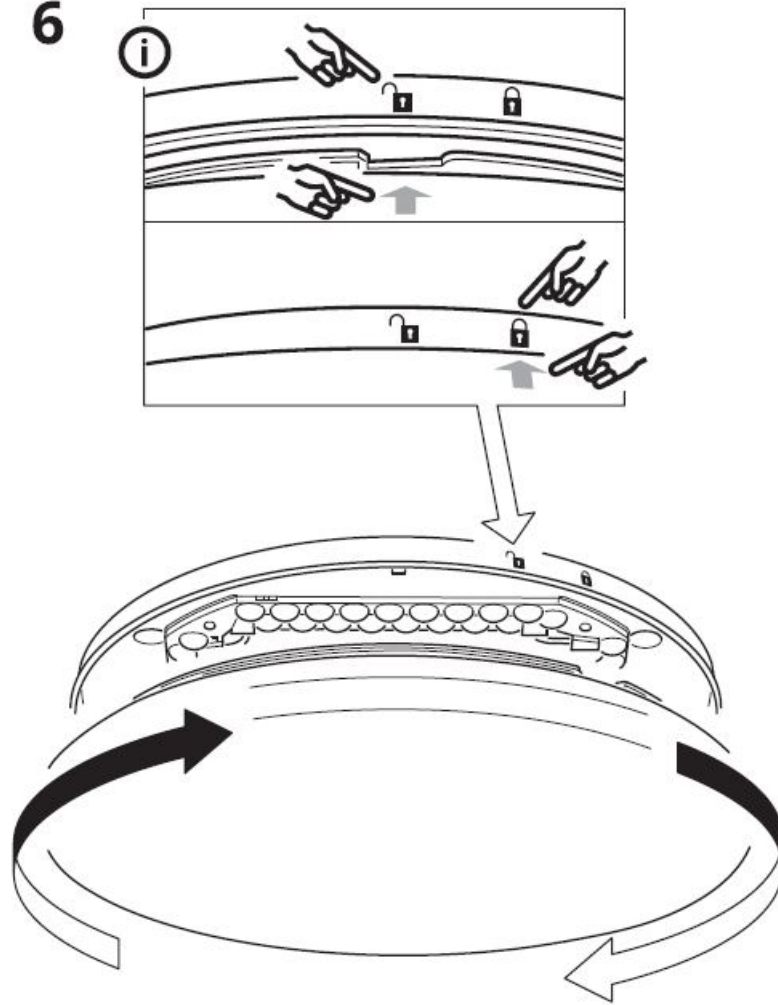
5

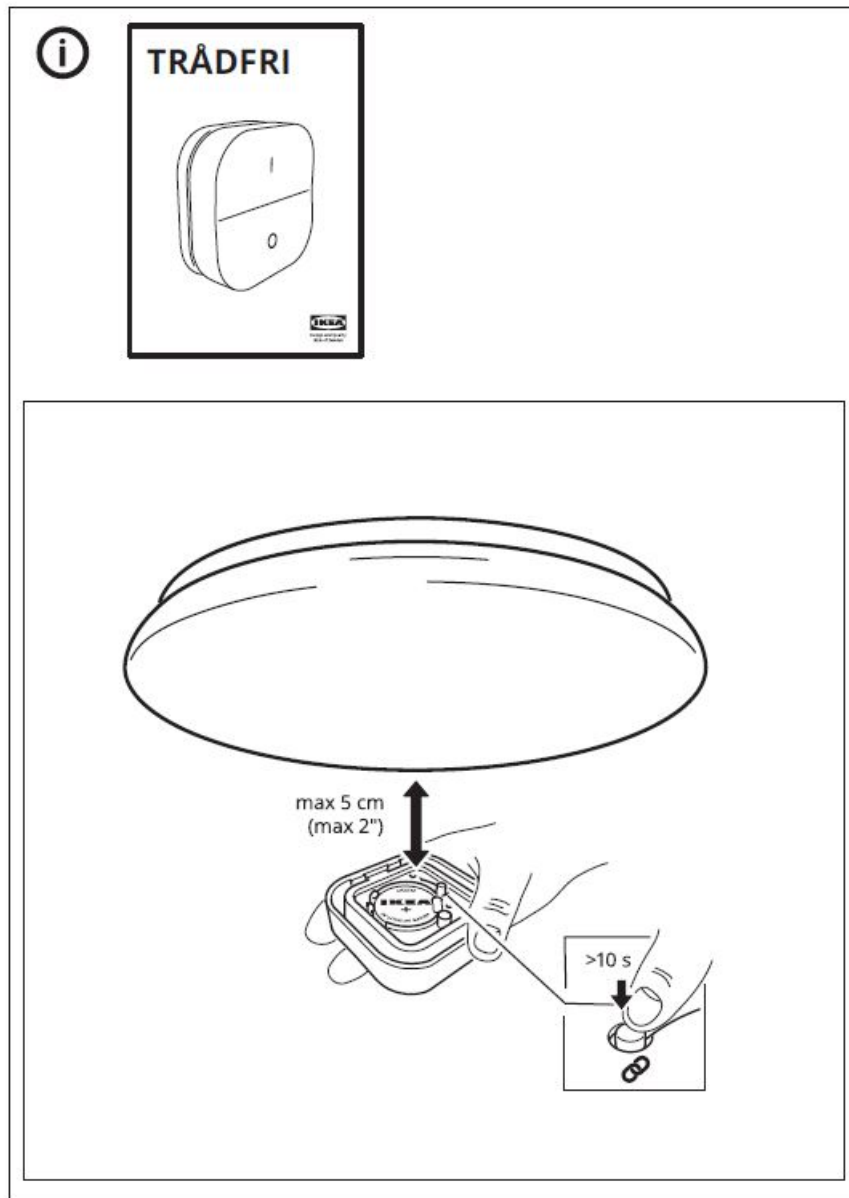


i



6





Documents / Resources

<p>STOFTMOLN</p>  	<p>IKEA STOFTMOLN LED Ceiling Lamp [pdf] Instruction Manual T2106, FHO-T2106, FHOT2106, STOFTMOLN LED Ceiling Lamp, LED Ceiling Lamp</p>
--	--