



Contents [[hide](#)]

- [1 IKEA KOLVATTEN LED Lighting with Sensor](#)
- [2 Tools](#)
- [3 PreCaution](#)
- [4 Hardware](#)
- [5 Models](#)
- [6 Battery Replacement](#)
- [7 Installation](#)
- [8 Ports Description](#)
- [9 Frequently Asked Questions](#)
- [10 Documents / Resources](#)
 - [10.1 References](#)

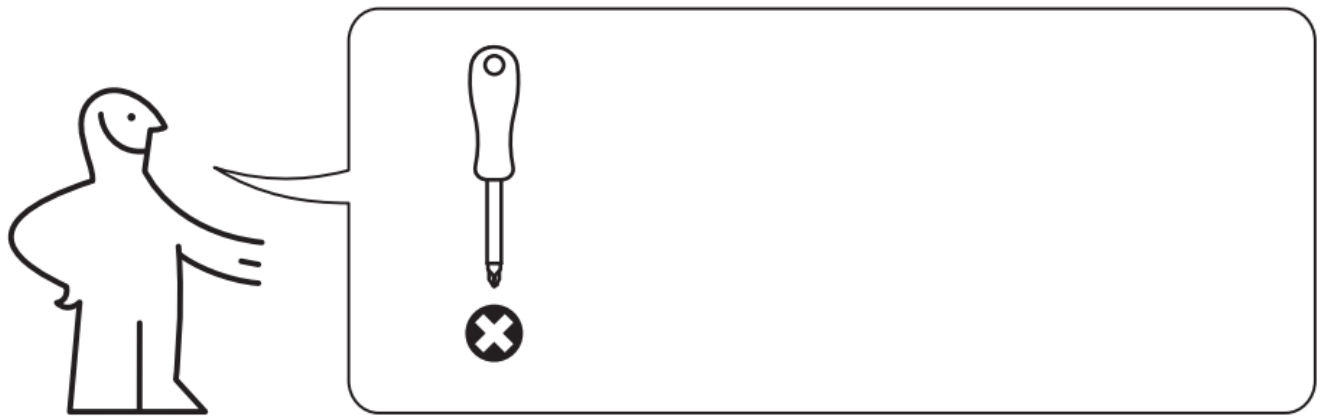


IKEA KOLVATTEN LED Lighting with Sensor

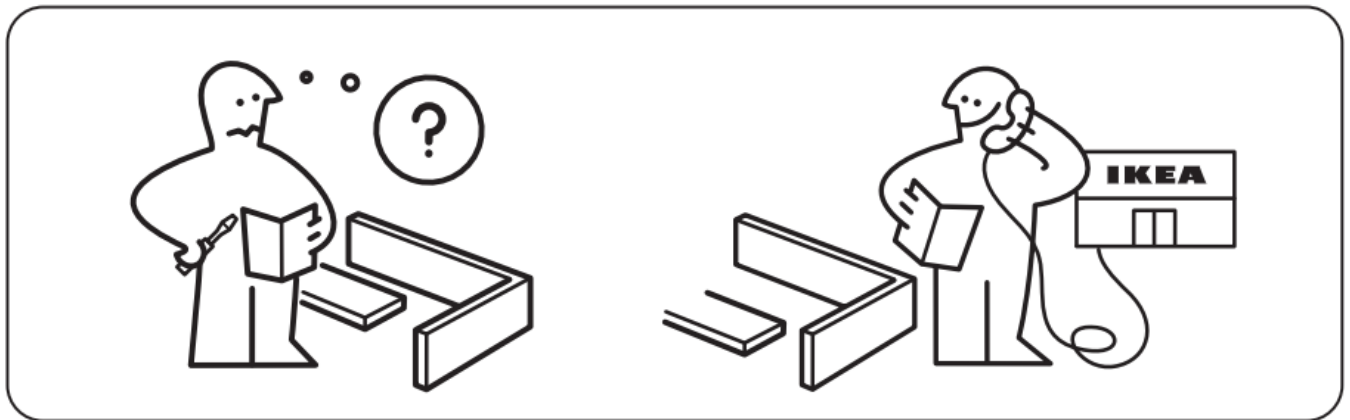


ALWAYS REMOVE THE BATTERIES BEFORE STORING.

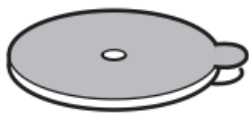
Tools



PreCaution



Hardware



2x

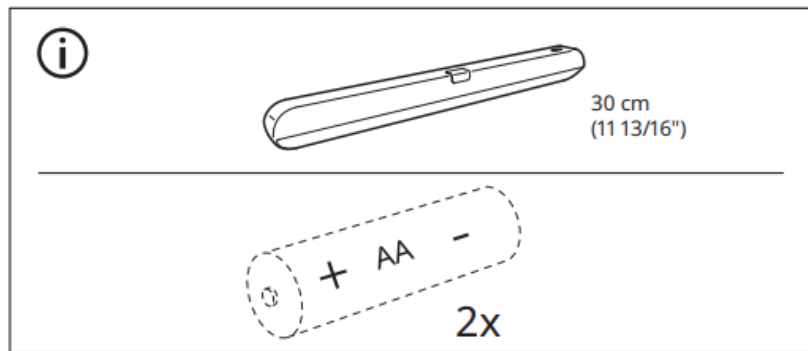
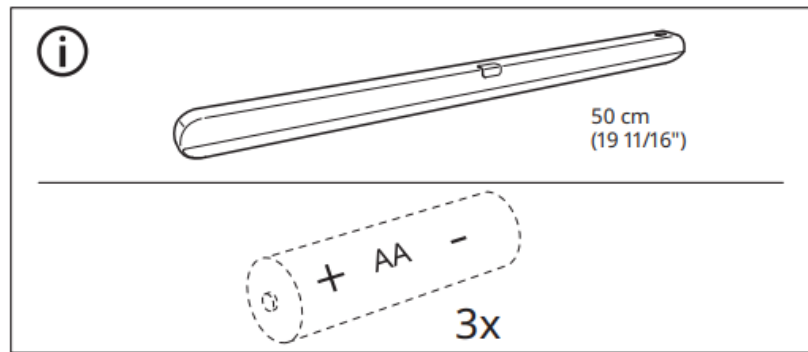
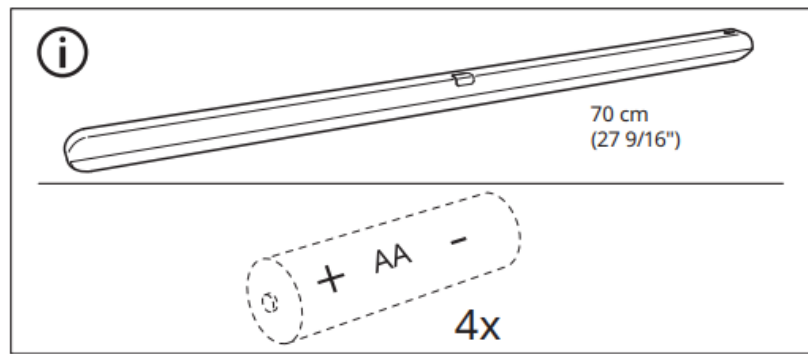


2x

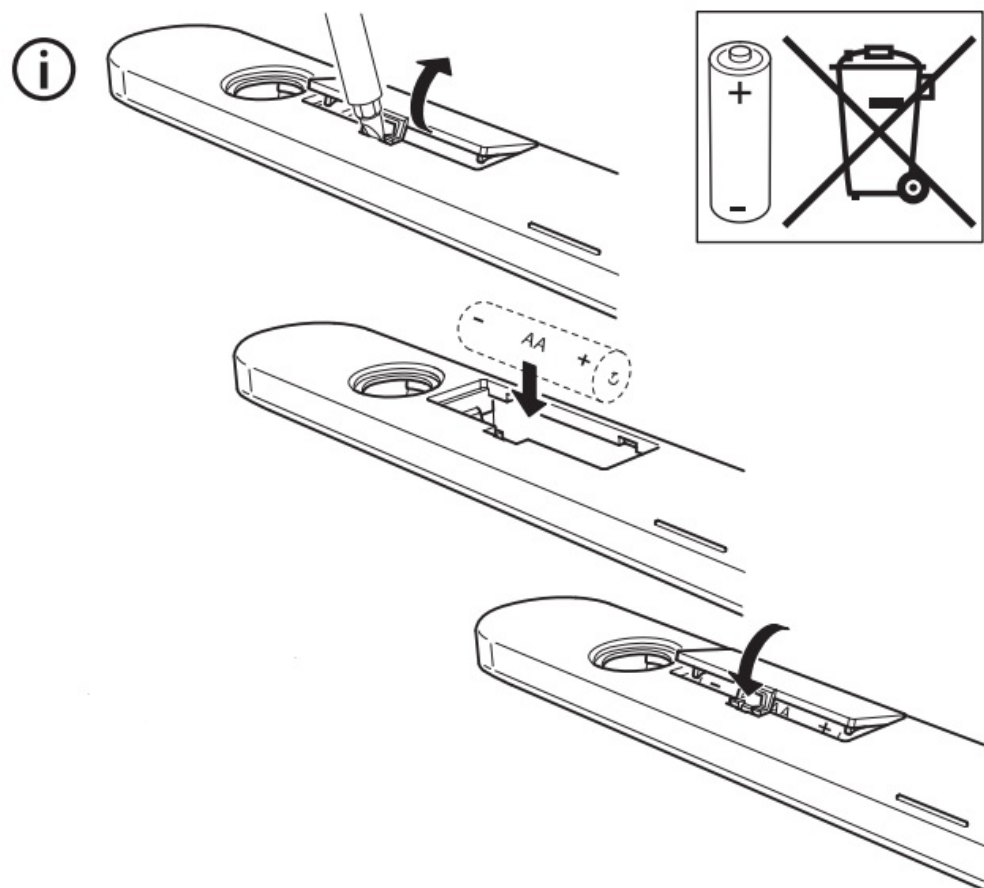


2x

Models

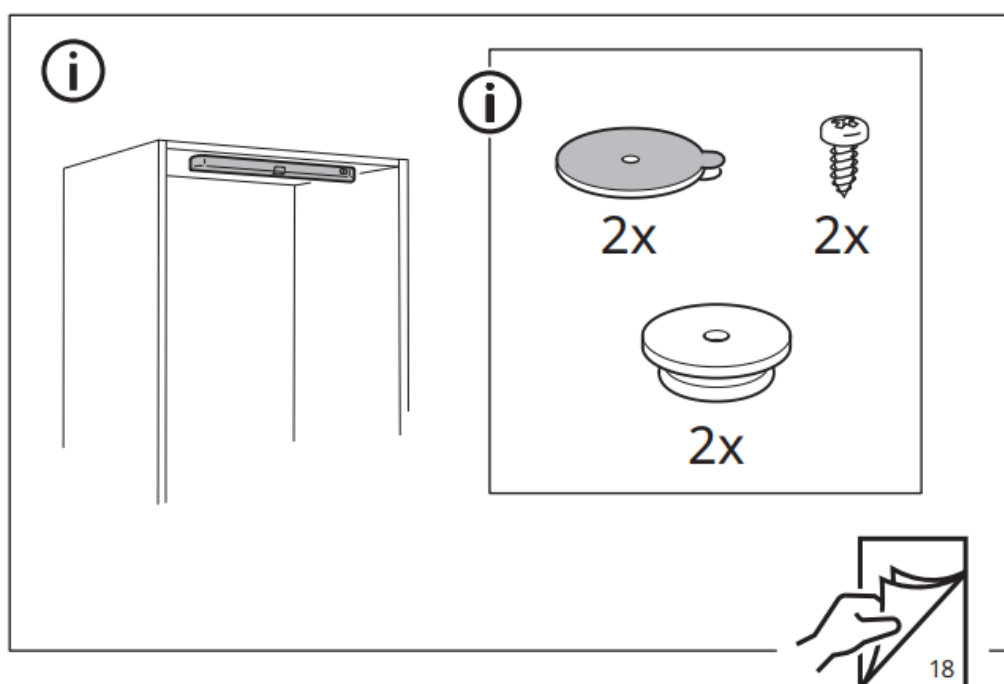


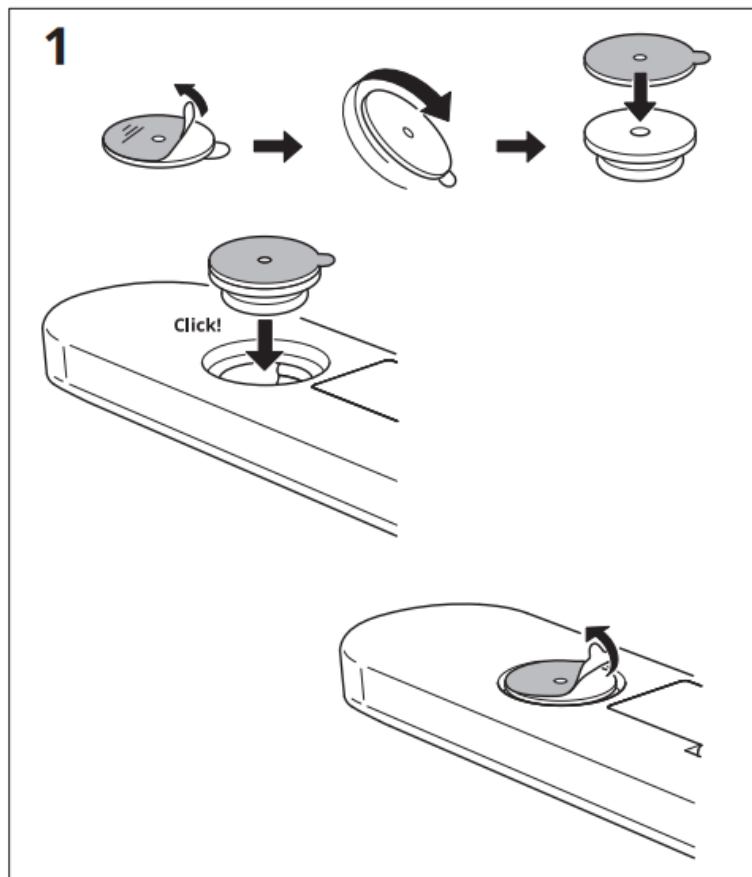
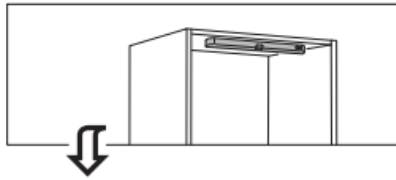
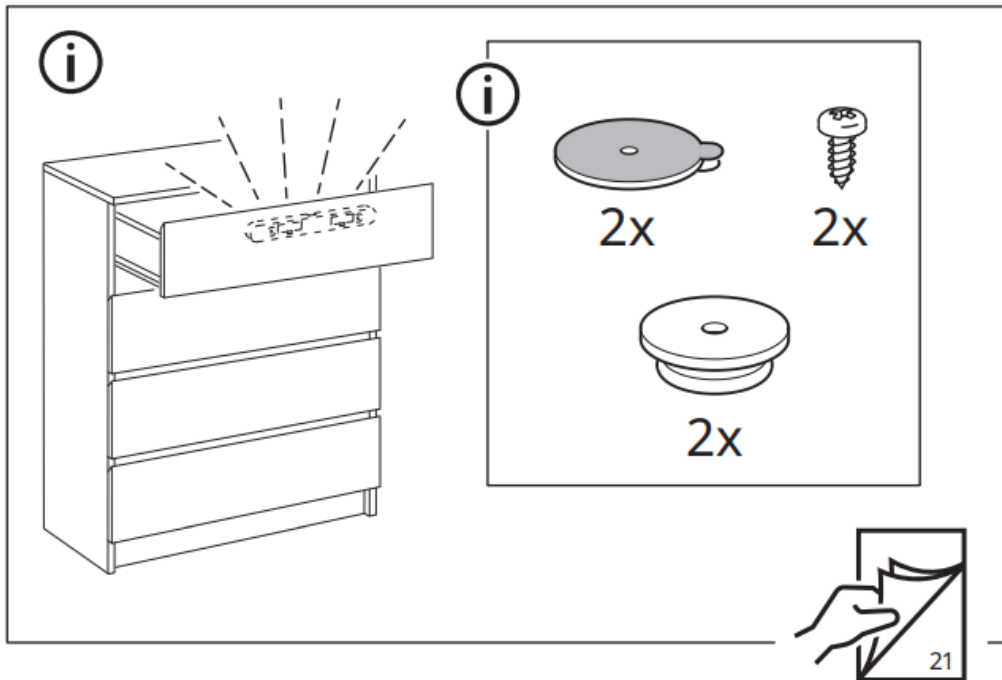
Battery Replacement

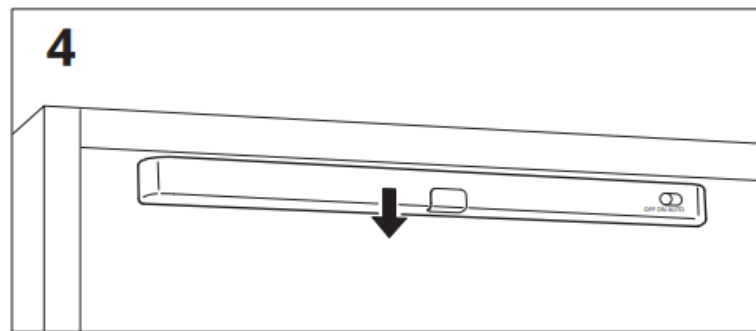
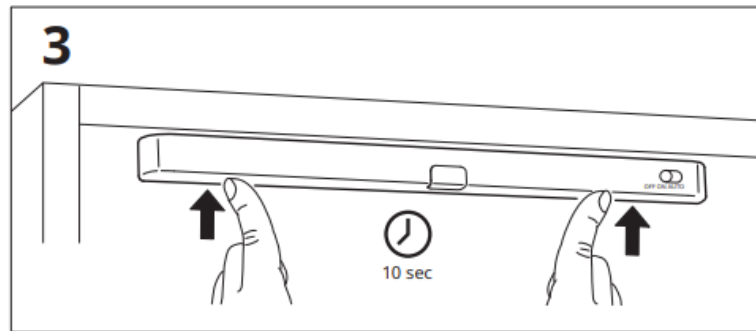
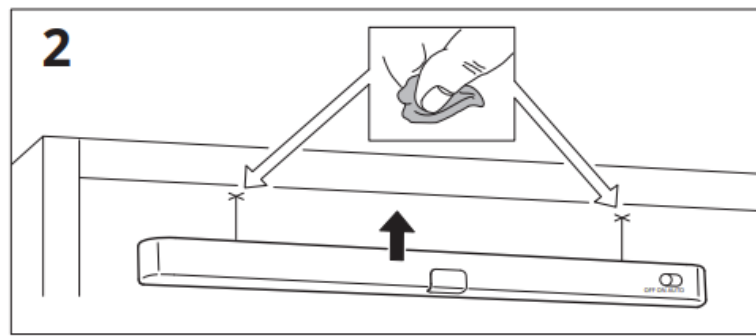


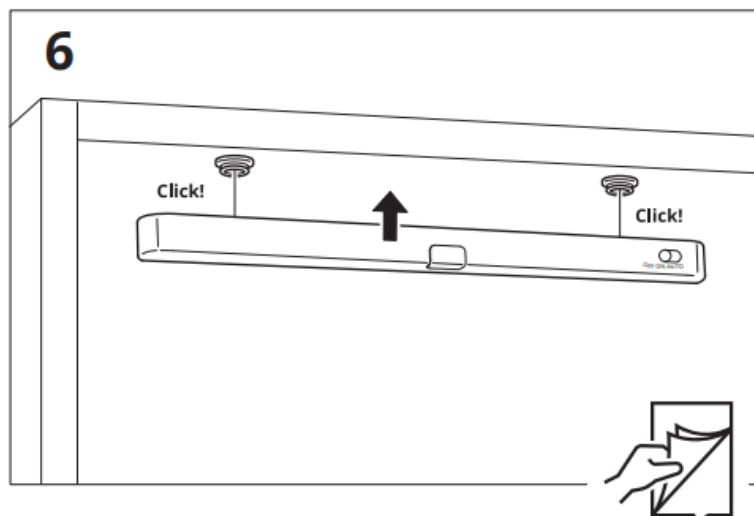
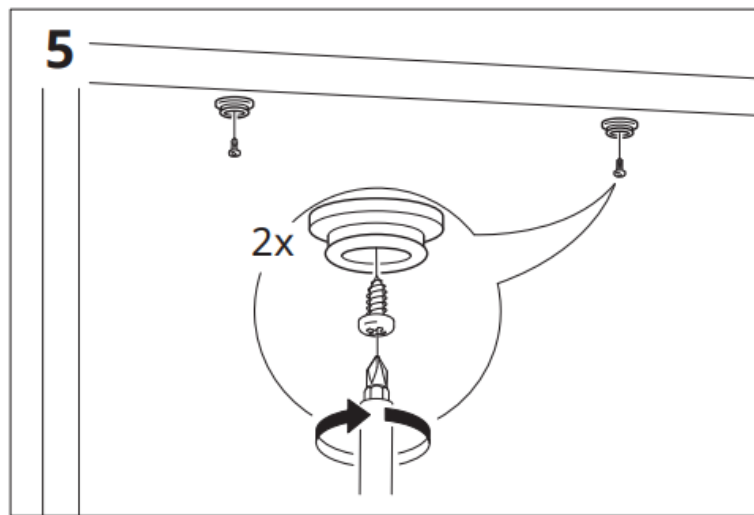
Only use batteries that are intended for the product. Do not mix old and new batteries, different brands or types.

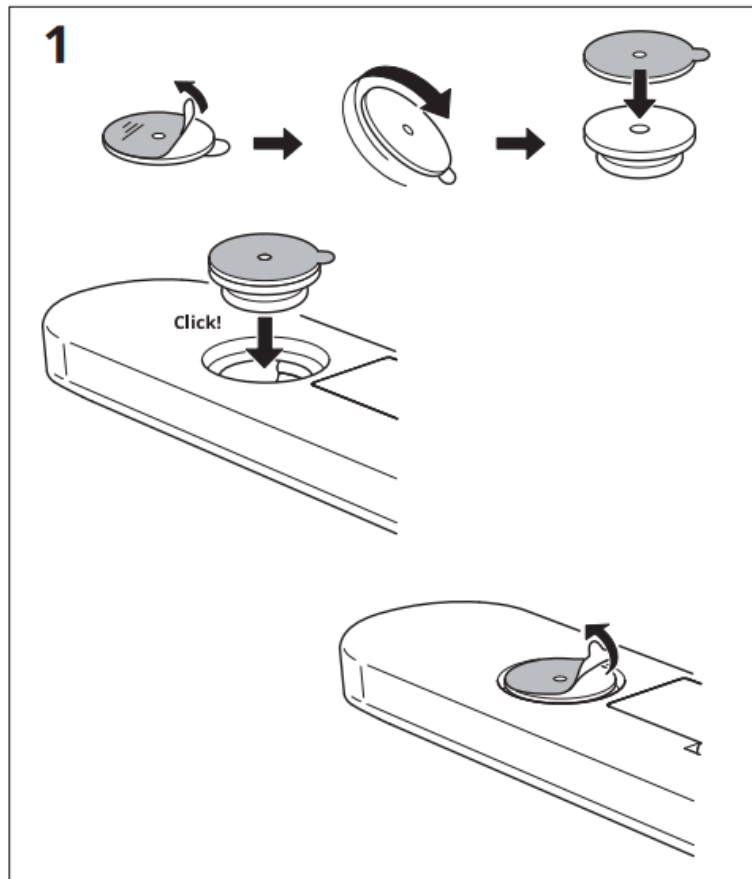
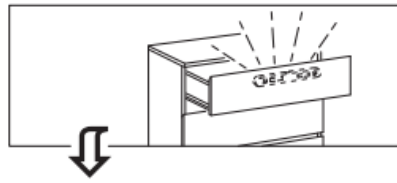
Installation

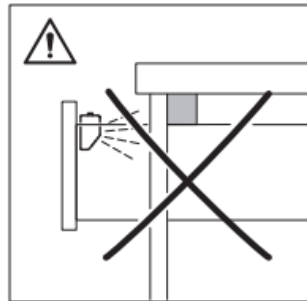
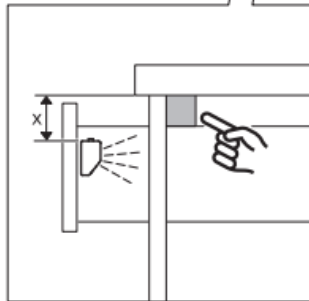
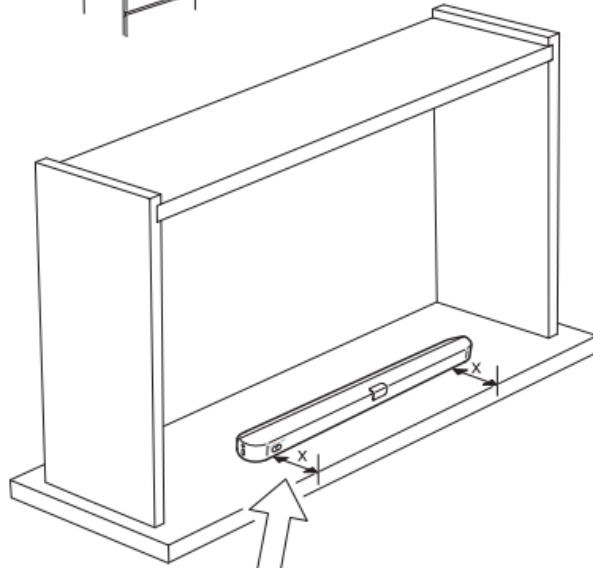


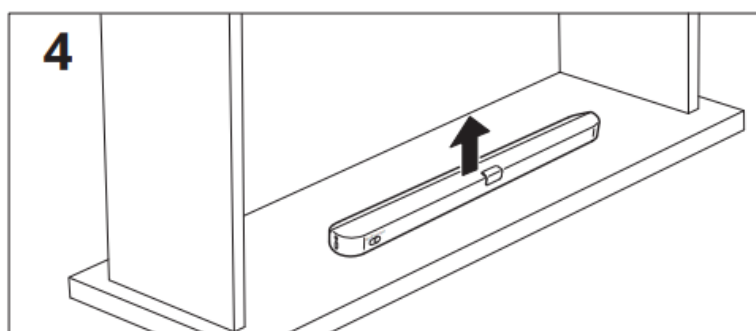
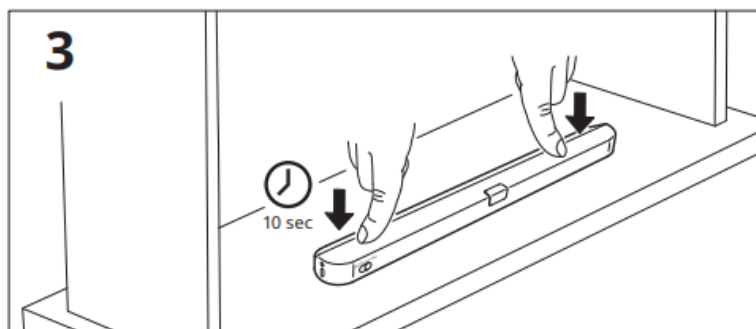
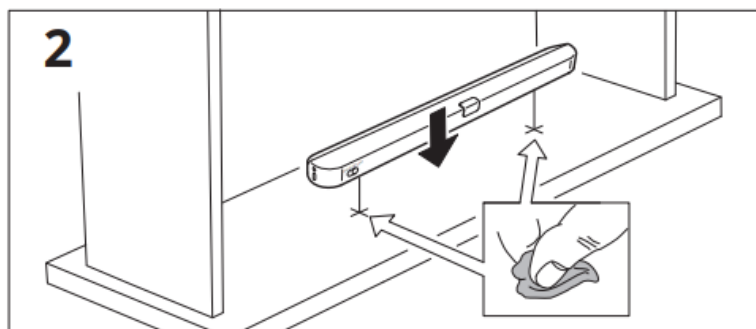


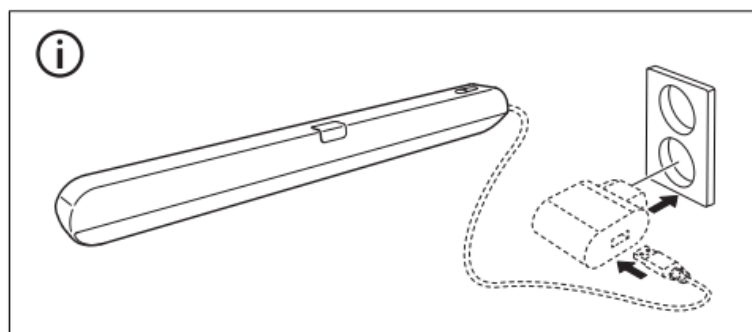
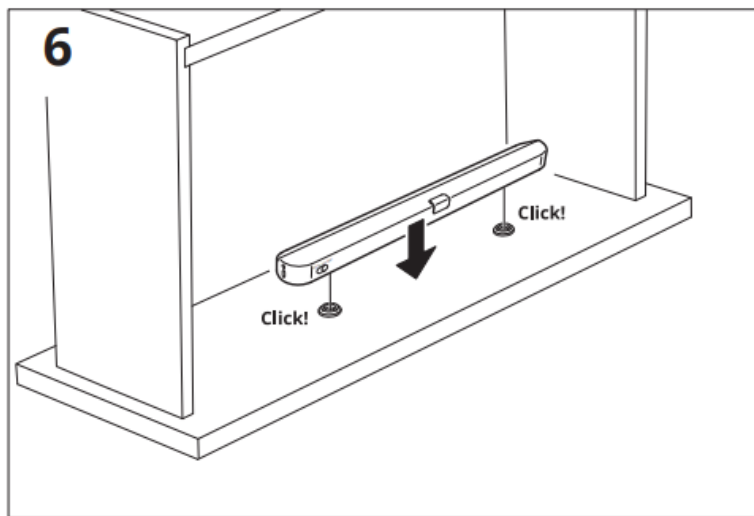
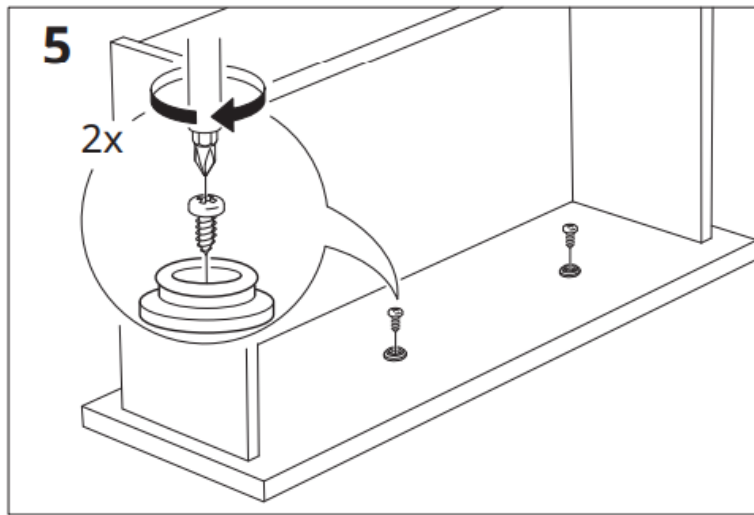




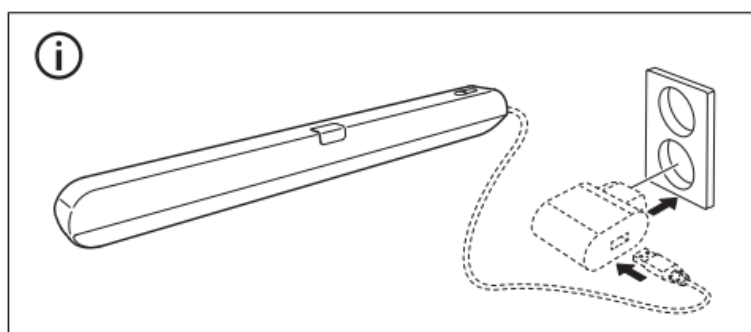




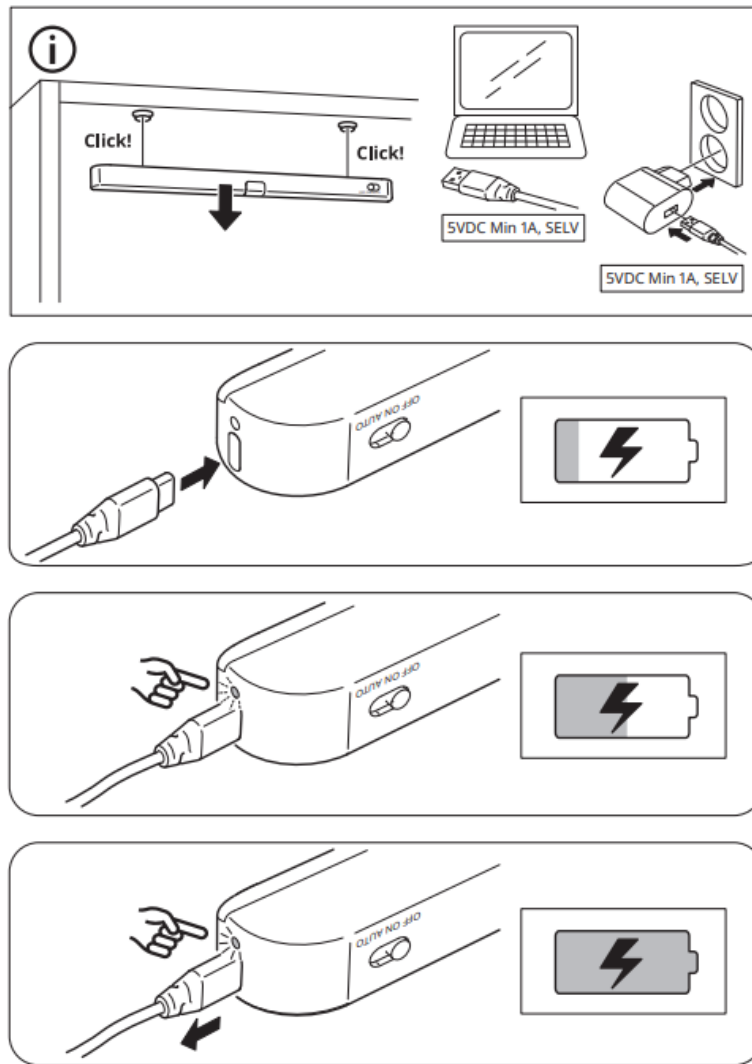




USB-C cable and USB charger are sold separately.



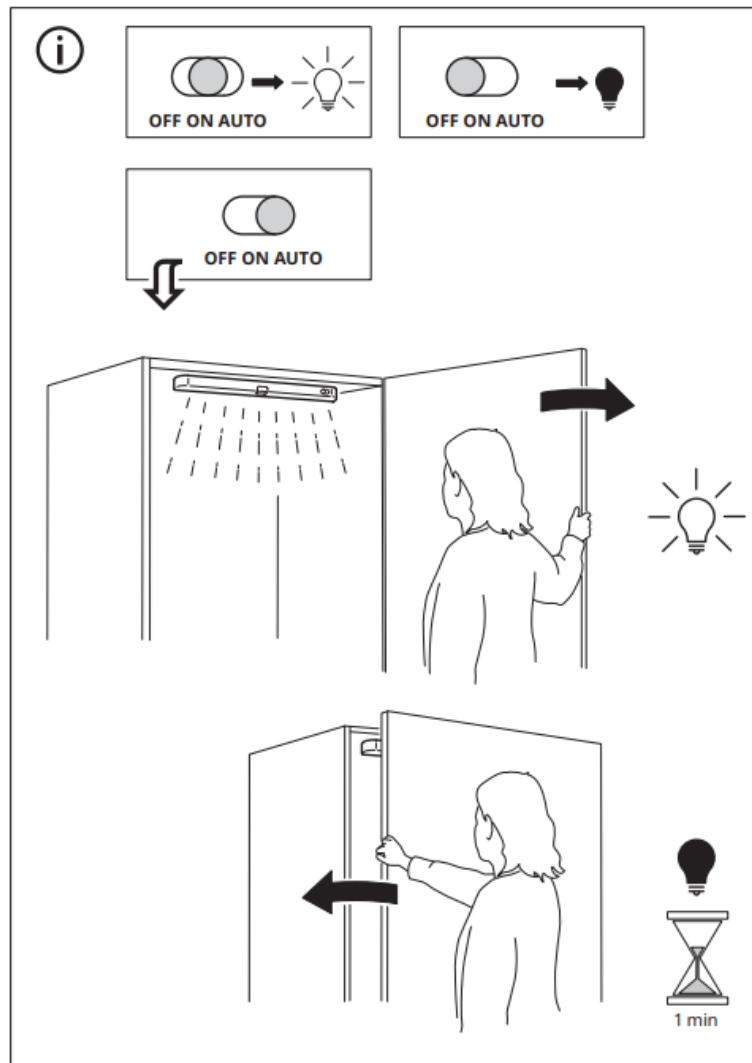
Ports Description



LED indicator status:

- White LED pulsing on: Charging in progress.
- White LED steady on: Charging complete.
- White LED flashing: Error.


The white LED indicator will flash if the batteries are inserted incorrectly, or if non-rechargeable or damaged batteries are inserted into the charger by mistake.



Frequently Asked Questions



- **Q: Can I replace the light source in this luminaire?**
 - A: No, the light source is not replaceable. When it reaches the end of its life, the entire luminaire should be replaced.
- **Q: Is this product safe for children to use?**
 - A: No, this product is not intended for children due to the presence of electrical components. Only adults should handle recharging.
- **Q: What type of transformer should I use with this product?**
 - A: Use a Safety Extra Low Voltage (SELV) transformer as the power supply for this product for safe operation.

Documents / Resources

	IKEA KOLVATTEN LED Lighting with Sensor [pdf] Instruction Manual KOLVATTEN, KOLVATTEN LED Lighting with Sensor, LED Lighting with S ensor, Lighting with Sensor, Sensor
-----------------------------------------------------------------------------------	-----------------------------------------------------------------------------------------------------------------------------------------------------------------------------------------------

References

- [User Manual](#)

 Ikea, KOLVATTEN, KOLVATTEN LED Lighting with Sensor, LED Lighting With Sensor, Lighting with Sensor,
 Ikea Sensor

Leave a comment

Your email address will not be published. Required fields are marked *

Comment *

Name

Email

Website

☐ Save my name, email, and website in this browser for the next time I comment.

Post Comment

Search:

e.g. whirlpool wrf535swhz

Search

[Manuals+](#) | [Upload](#) | [Deep Search](#) | [Privacy Policy](#) | [@manuals.plus](#) | [YouTube](#)

This website is an independent publication and is neither affiliated with nor endorsed by any of the trademark owners. The "Bluetooth®" word mark and logos are registered trademarks owned by Bluetooth SIG, Inc. The "Wi-Fi®" word mark and logos are registered trademarks owned by the Wi-Fi Alliance. Any use of these marks on this website does not imply any affiliation with or endorsement.