



IKEA KOLDGRADER Fridge Freezer Instruction Manual

[Home](#) » [Ikea](#) » **IKEA KOLDGRADER Fridge Freezer Instruction Manual** 

Contents

- [1 KOLDGRADER Fridge Freezer](#)
- [2 Product Information](#)
- [3 INFO](#)
- [4 Product Description](#)
- [5 Installation](#)
- [6 Inspection checklist](#)
- [7 First use](#)
- [8 Control panel](#)
- [9 Display](#)
- [10 Freezing and storage of frozen food](#)
- [11 Troubleshooting](#)
- [12 Technical data](#)
- [13 Documents / Resources](#)
 - [13.1 References](#)
- [14 Related Posts](#)



KOLDGRADER Fridge Freezer



Product Information

KOLDGRADER Refrigerator

The KOLDGRADER refrigerator is a household appliance designed to keep food items fresh and cool. It features a fan-cooling system with LED lighting, a control panel, door balconies, a bottle balcony, a vegetable drawer, freezer drawers, and a freezing drawer.

It also includes a sliding shelf with containers, an extra zone, an extendable half-shelf, and glass shelves. The refrigerator has three cooling zones: the least cold zone, intermediate temperature zone, and coldest zone. The appliance has a gross capacity of XXX liters and a net capacity of XXX liters for the refrigerator and XX liters for the freezer. It has a freezing capacity of X kg/24h and a rising time of XX hours. The refrigerator operates on 230-240V with a frequency of 50Hz and uses a refrigerant to cool the interior.

Installation Instructions

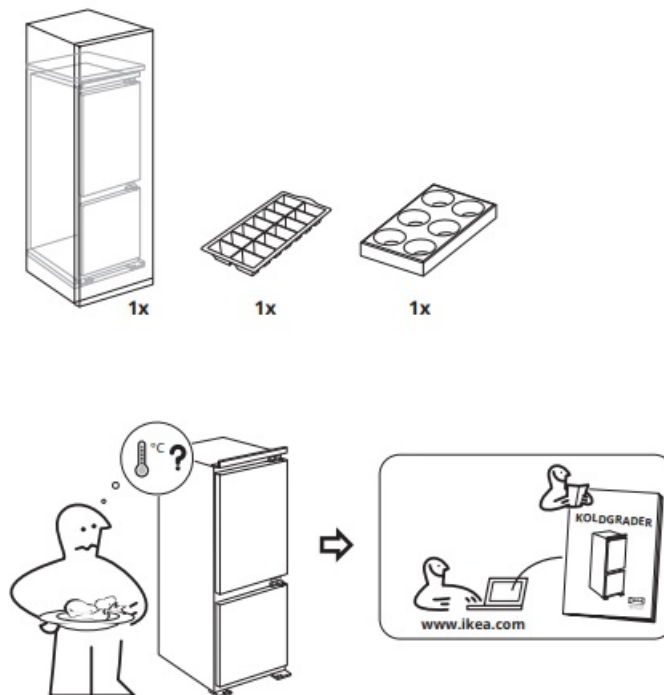
- Refer to the Safety chapters and installation instruction documents before installing the appliance.
- Install the appliance in a dry, well-ventilated indoor position.
- Avoid installing the appliance near heat sources, direct sunlight, or in places with high temperatures.
- Make sure to fix the appliance according to the installation instruction document to prevent instability risks.

Usage Instructions

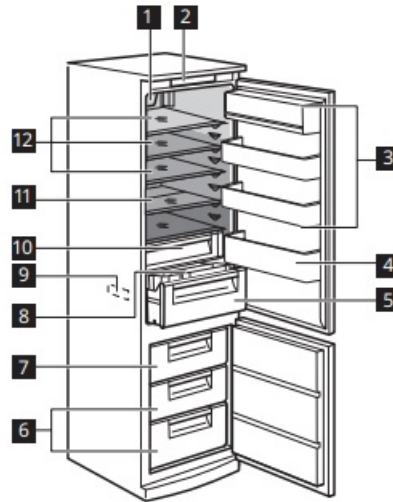
1. Before using the appliance for the first time, wash the interior and all internal accessories with lukewarm water and some neutral soap to remove the typical smell of a brand-new product.
2. Dry thoroughly. Do not use detergents, abrasive powders, chlorine, or oil-based cleaners as they will damage the finish.
3. Make sure the gasket seals all around the door when the door is closed. Refer to the assembly instruction for door alignment if the answer is NO.
4. Check for any collision between parts/furniture while opening and closing the door. Refer to the assembly instruction for door alignment if necessary.
5. Install the appliance in the built-in structure according to the assembly instruction for proper installation.
6. Wait for at least 4 hours before connecting the appliance to the power supply after reversing the door or first installation.

For more information, refer to the full version of the user manual available on www.ikea.com

INFO



Product Description



1. Fan-cooling with LED lamp
2. Control panel
3. Door balconies
4. Bottle balcony
5. Vegetable drawer
6. Freezer drawers
7. Freezing drawer
8. Sliding shelf with containers
9. Rating plate
10. Extra Zone
11. Extendable half-shelf
12. Glass shelves
 - Least cold zone
 - Intermediate temperature zone
 - Coldest zone

Installation

- **Warning!** Refer to Safety chapters.
- **Warning!** Refer to installation instruction document to install your appliance.
- **Warning!** Fix the appliance in accordance with installation instruction document to avoid a risk of instability of the appliance.

Location

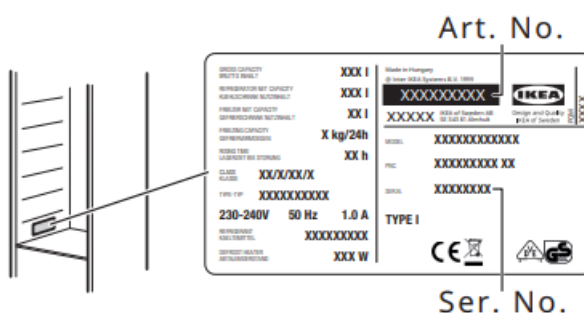
- This appliance should be installed in a dry, well-ventilated indoor position. Do not install the appliance in the nearby of the heat source (oven, stoves, radiators, cookers or hobs) or in a place with direct sunlight.
- This appliance is intended to be used at ambient temperature ranging from 10°C to 43°C.
- The correct operation of the appliance can only be guaranteed within the specified temperature range.
- If you have any doubts regarding where to install the appliance, please turn to the vendor, to our customer

service, or to the nearest Authorised Service Centre.

- To download the full version visit www.ikea.com
- It must be possible to disconnect the appliance from the mains power supply. The plug must therefore be easily accessible after installation.

Inspection checklist

- Please follow the inspection checklist before using your appliance. If any answer is “NO”, follow the relevant action. Remember to write down the product serial number and article number as required and attach your receipt to this page.
- **Product serial number (Ser. No.):**
- **Product article number (Art. No.):**
- **Purchasing date:**



| To check | If the answer is NO |
|---|---|
| Make sure the gasket seals all around the door when the door is closed. | Refer to the assembly instruction – door alignment. |

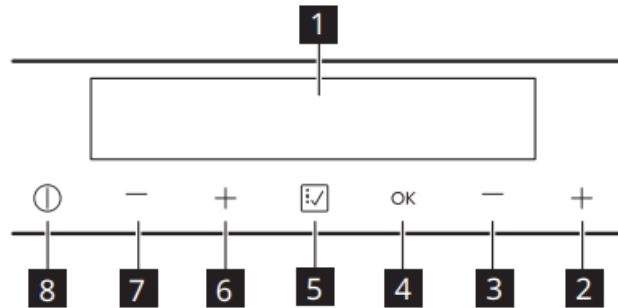
| | |
|---|---|
| Check if there is no collision between parts/furniture while opening and closing the door. | Refer to the assembly instruction – door alignment. |
| Install the appliance in the built-in structure. | Follow the assembly instruction for the proper installation. |
| Make sure that at first installation or after reversing the door the appliance stands in vertical position for at least 4 hours before it is connected to the power supply. | Wait 4 hours before connecting the appliance to the power supply. |

First use

Cleaning the interior

- Before using the appliance for the first time, the interior and all internal accessories should be washed with lukewarm water and some neutral soap to remove the typical smell of a brand-new product, then dried thoroughly.
- **Caution!** Do not use detergents, abrasive powders, chlorine or oilbased cleaners as they will damage the finish.
- **Caution!** The accessories and parts of the appliance are not suitable for washing in a dishwasher.

Control panel



1. Display
2. Freezer temperature warmer button
3. Freezer temperature colder button
4. OK button
5. Function button
6. Fridge temperature warmer button
7. Fridge temperature colder button
8. ON/OFF button

To change the default sound of the buttons, press simultaneously the 5 Function button and the Fridge temperature Colder button for a few seconds. To revert the change, repeat the procedure.

Switching on

1. Connect the mains plug to the power socket.
2. Press the 8 ON/OFF button if the display is off.

The temperature indicators show the set default temperature.

Switching off

- Press 8 ON/OFF buttons for 3 seconds.
- The display switches off.
- To disconnect the appliance from the power, disconnect the mains plug from the power socket.

Display



- **A.** Fridge compartment indicator
- **B.** Fridge temperature indicator and timer indicator
- **C.** Fridge Off indicator
- **D.** Shopping Function indicator
- **E.** Vacation Function indicator
- **F.** Fast Freezing Function indicator

- **G.** Freezer temperature indicator
- **H.** Freezer compartment indicator
- **I.** Alarm indicator
- **J.** Child Lock Function indicator
- **K.** Bottle Chill Function indicator
- **L.** Fan-cooling Function indicator

Switching on and off the fridge compartment

- To switch on the fridge compartment press one of the fridge temperature buttons.

To switch off only the fridge compartment maintaining the freezer on:

1. Tap the 5 Function button repeatedly until the fridge compartment indicator blinks.
 - The fridge Off indicator and the fridge compartment indicator blinks.
 - The fridge temperature indicator shows dashes.
2. Press the 4 OK buttons to confirm.
 - The fridge Off indicator is shown and the fridge compartment is switched off.

Temperature regulation

- Set the temperature by pressing the temperature regulators. The temperature indicators show the set temperature.

The recommended set temperature is:

- +4°C for the fridge
- -18°C for the freezer
- The set temperature will be reached within 24 hours. After a power failure, the set temperature remains stored.

Shopping Function

1. Press the 5 Function button until the Shopping indicator blinks.
 2. Press the 4 OK buttons to confirm.
- The Shopping indicator is shown. The fan activates automatically for the function duration.
 - This function stops automatically after approximately 6 hours. You can also deactivate the function by repeating the procedure until the Shopping indicator turns off or by pressing the 6, temperature buttons and setting a different fridge temperature.

Vacation Function

1. Press the 5 Function button until the Vacation indicator blinks.

- The fridge temperature indicator shows the set temperature.
2. Press 4 OK button to confirm.
 - The Vacation indicator is shown.
 - The function switches off after selecting a different fridge temperature.

Fast Freezing Function

- To freeze fresh food activate the Fast Freezing Function at least 24 hours before placing the food in the appliance.
1. Press the 5 Function button until the Fast Freezing indicator blinks.
 2. Press the 4 OK buttons to confirm.
- The Fast Freezing indicator is shown.
 - The Fast Freezing Function stops automatically after 52 hours. You can also deactivate the function by repeating the procedure until the Fast Freezing indicator turns off or by pressing 2, or 3 temperature buttons and setting a different freezer temperature.

Child Lock Function

1. Press the 5 Function button until the Child Lock indicator blinks.
2. Press 4 OK button to confirm.
 - The Child Lock indicator is shown.
 - To deactivate the Child Lock Function, repeat the procedure until the Child Lock indicator disappears.

Bottle Chill Function

1. Press the 5 Function button until the Bottle Chill indicator blinks.
 - The Timer shows the set value (30 minutes) for a few seconds.
2. Press the 2, and 3 temperature buttons to change the Timer set value from 1 to 90 minutes.
3. Press 4 OK button to confirm.
 - The Bottle Chill indicator is shown.
 - The Timer starts to flash (min).
 - At the end of the countdown the “0 min” indicator blinks and an audible alarm sounds. At that time, remove the products that were put into the appliance to cool down, and press the 4 OK button to switch off the sound and terminate the function.
 - To switch off the function at any time during the countdown, repeat the procedure until the Bottle Chill indicator disappears.

Fan-cooling Function

1. Press the 5 Function button until the Fancooling indicator blinks.



2. Press 4 OK button to confirm.

- The Fan-cooling indicator is shown.
- To switch off this function repeat the procedure until the Fan-cooling indicator disappears.
- The activation of the Fan-cooling Function increases energy consumption.

Freezing and storage of frozen food

- When activating an appliance for the first time or after a period out of use, before putting the products in the compartment let the appliance run at least 3 hours with the Fast Freezing function switched on.
- To freeze fresh food activate the Fast
- Freezing function at least 24 hours before placing the food to be frozen in the freezer compartment.
- Store the fresh food evenly distributed in the first compartment or drawer from the top.
- The maximum amount of food that can be frozen without adding other fresh food during 24 hours is specified on the rating plate (a label located inside the appliance).
- If large quantities of food are to be stored, remove all drawers and place the food on shelves.
- Keep the food no closer than 15 mm from the door.
- **Caution!** In the event of accidental defrosting, for example due to a power failure, if the power has been off for longer than the value shown on rating plate under “rising time”, the defrosted food must be consumed quickly or cooked immediately then cooled and then re-frozen.

Hints and tips

- The freezer compartment is the one marked with .
- A good temperature setting that ensures the preservation of frozen food products is a temperature less than or equal to -18°C.
- Higher temperature settings inside the appliance may lead to shorter shelf life.
- The whole freezer compartment is suitable for the storage of frozen food products.
- The fresh food compartment is the one marked (on the rating plate). .
- In order to accelerate the cooling down of the goods, it is advisable to turn on the fan.
- Refer to “Fan-cooling Function”. The activation of Fan-cooling allows greater homogenization of internal temperatures.

Troubleshooting

- Be sure to check the “Inspection checklist” before using your appliance. If you encounter an issue with your appliance, check the “Troubleshooting” chapter in the full version of the User Manual available on: www.ikea.com.

Technical data

Non-EU:

- The QR code on the energy label supplied with the appliance provides a web link to the information related to the performance of the appliance. Keep the energy label for reference together with the user manual and all

other documents provided with this appliance.



EU:

- The QR code on the energy label supplied with the appliance provides a web link to the information related to the performance of the appliance in the EU EPREL database.
- Keep the energy label for reference together with the user manual and all other documents provided with this appliance.
- It is also possible to find the same information in EPREL using the link <https://eprel.ec.europa.eu> and the model name and product number that you find on the rating plate of the appliance. See the link www.theenergylabel.eu for detailed information about the energy label.

Information for test institutes

- Installation and preparation of the appliance for any EcoDesign verification shall be compliant with BS EN 62552 (for the UK) / EN 62552 (for the EU). Ventilation requirements, recess dimensions, and minimum rear clearances shall be as stated in this User
- Manual in the Installation chapter. Please contact the manufacturer for any other further information, including loading plans.
- **To download the full version visit www.ikea.com**
- © Inter IKEA Systems B.V. 2022
- 21552
- AA-2342647-1

Documents / Resources

| | |
|--|---|
|   | IKEA KOLDGRADER Fridge Freezer [pdf] Instruction Manual 750, KOLDGRADER Fridge Freezer, KOLDGRADER, Fridge Freezer, KOLDGRADER Fridge, KOLDGRADER Freezer, Fridge, Freezer |
|--|---|

References

-  [Hej! Welcome to IKEA Global](#)
-  [APPLiA Europe | The new Energy Label | Belgium](#)