



KALLAX
Shelf
with
Doors



IKEA KALLAX Shelf with Doors Instruction Manual

[Home](#) » [Ikea](#) » **IKEA KALLAX Shelf with Doors Instruction Manual** 

Contents

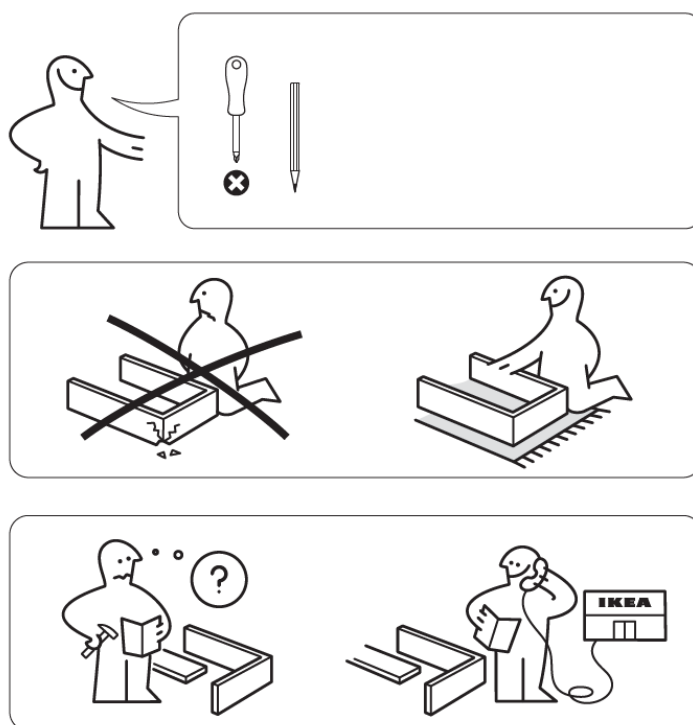
- [1 IKEA KALLAX Shelf with Doors](#)
- [2 Product Specifications](#)
- [3 Parts](#)
- [4 Assembly Steps:](#)
- [5 Placement and Maintenance:](#)
- [6 Frequently Asked Questions \(FAQ\)](#)
- [7 Documents / Resources](#)
 - [7.1 References](#)
- [8 Related Posts](#)



IKEA KALLAX Shelf with Doors



Warnings:

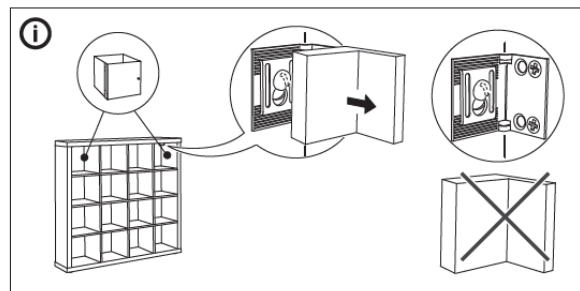
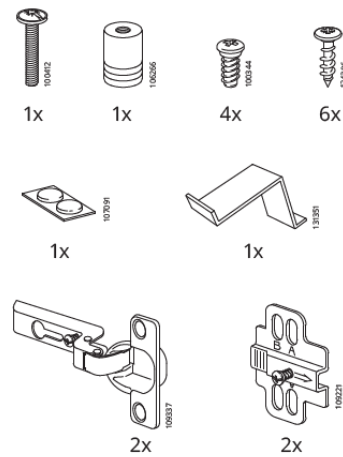


Product Specifications

- Model: KALLAX
- Product Code: AA-1009339-8

- Components included:
 - 2x 109337
 - 2x 109221
 - 1x 107091
 - 1x 131351
 - 6x 100412, 106266, 100344, 124386

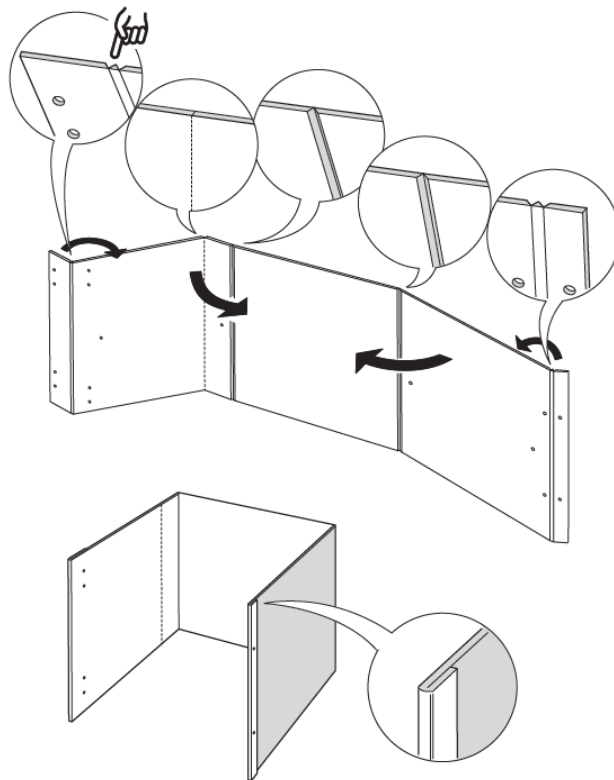
Parts



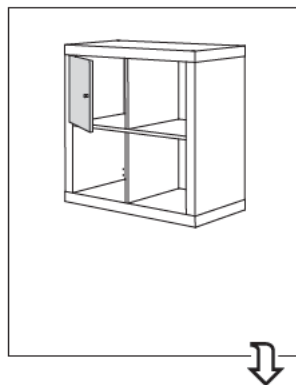
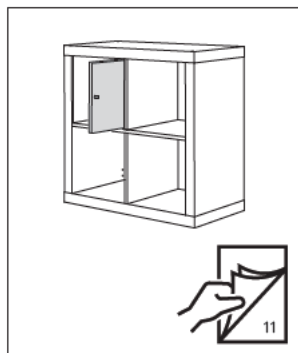
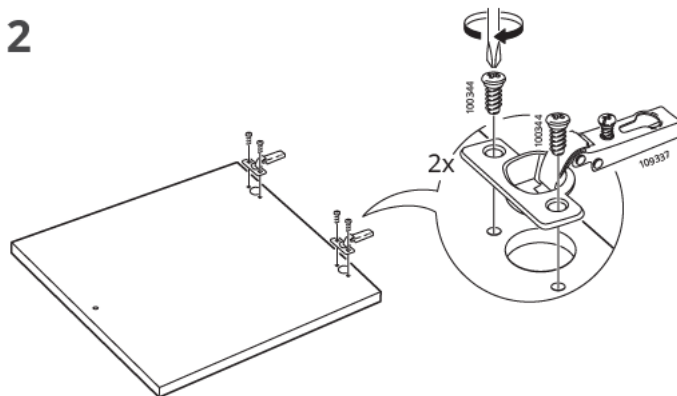
Assembly Steps:

1. Start by identifying all the components included in the package.
2. Follow the numerical sequence provided in the manual for assembly.
3. Use the provided screws and tools to secure the components together.
4. Ensure all parts are tightly connected to form the KALLAX unit.

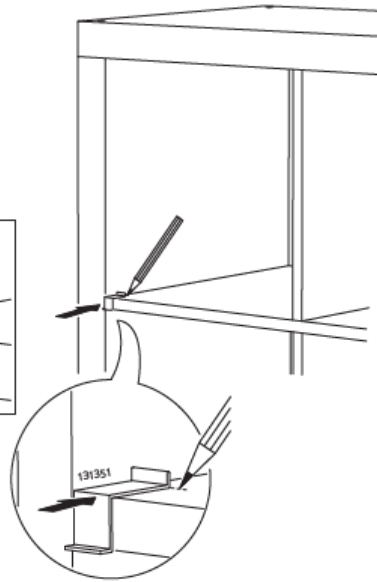
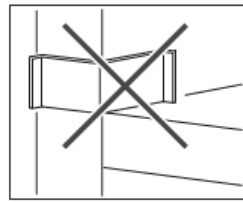
1



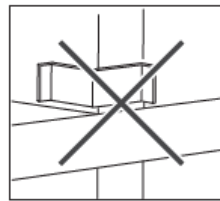
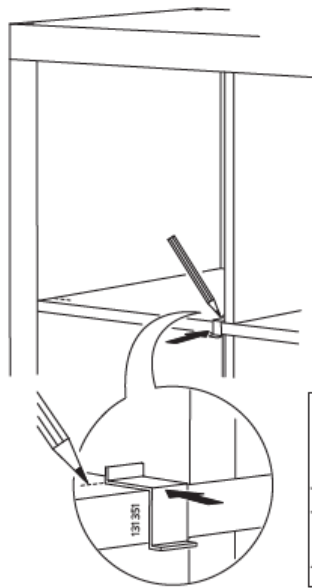
2



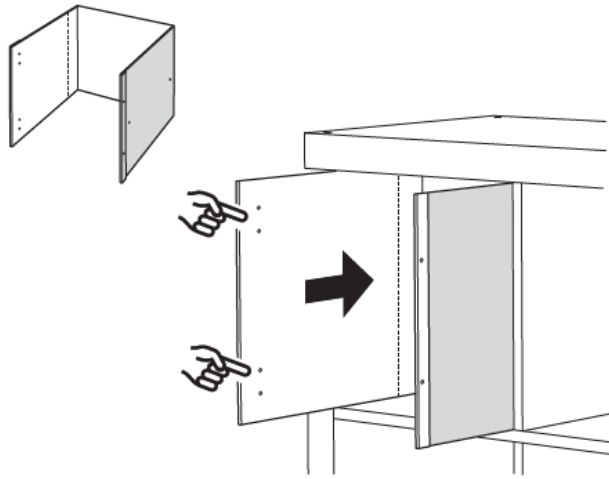
3



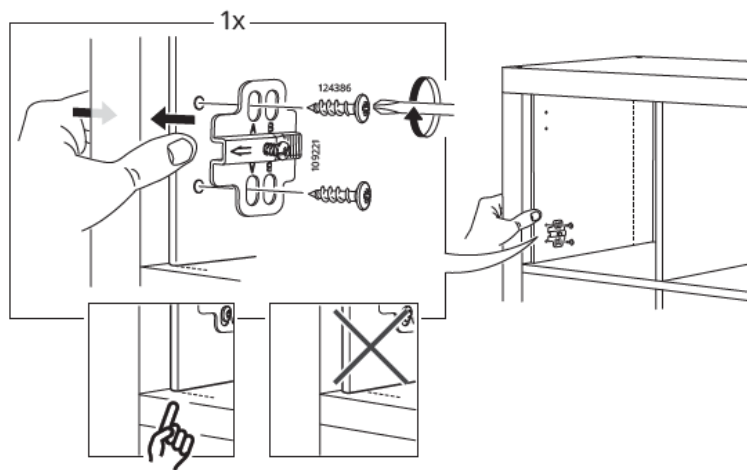
4



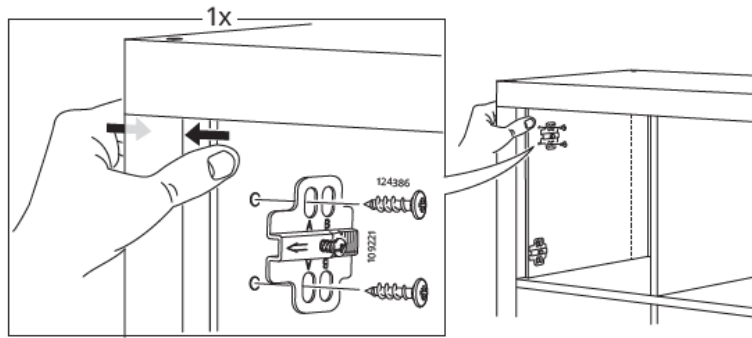
5



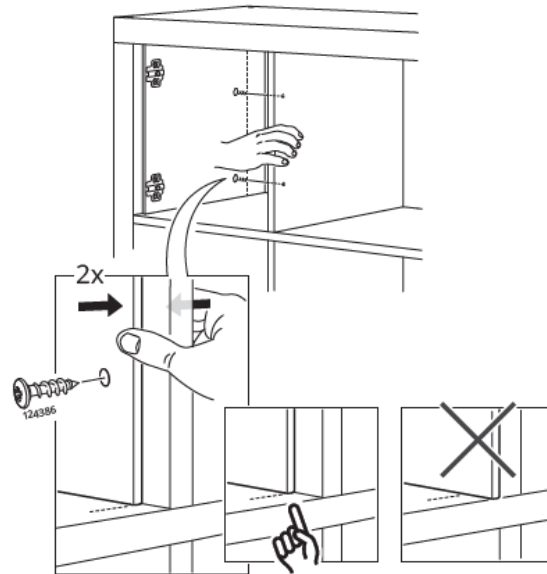
6



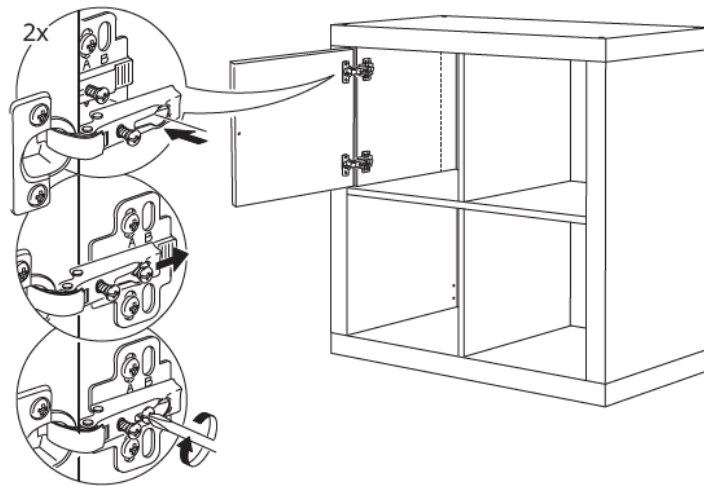
7



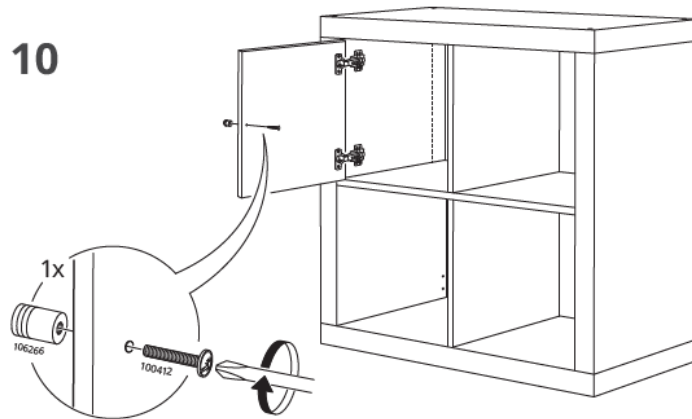
8



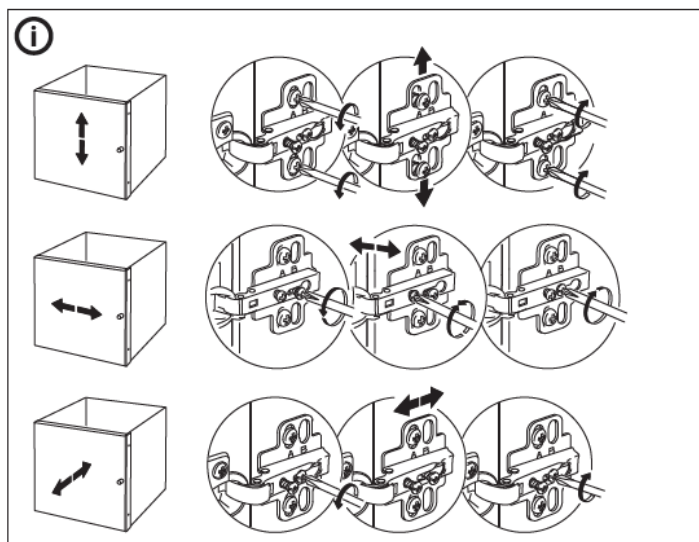
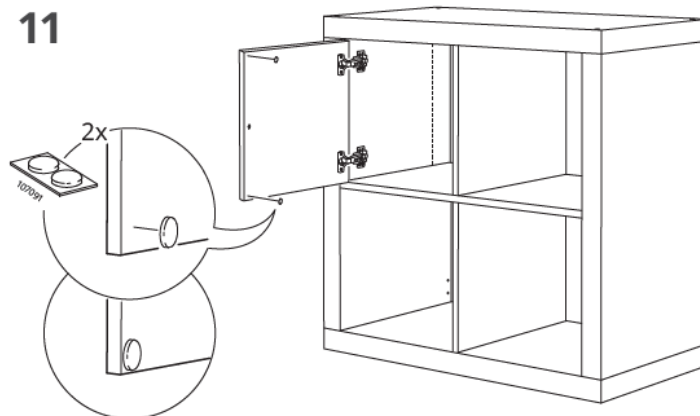
9

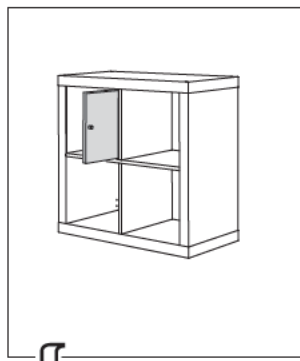


10

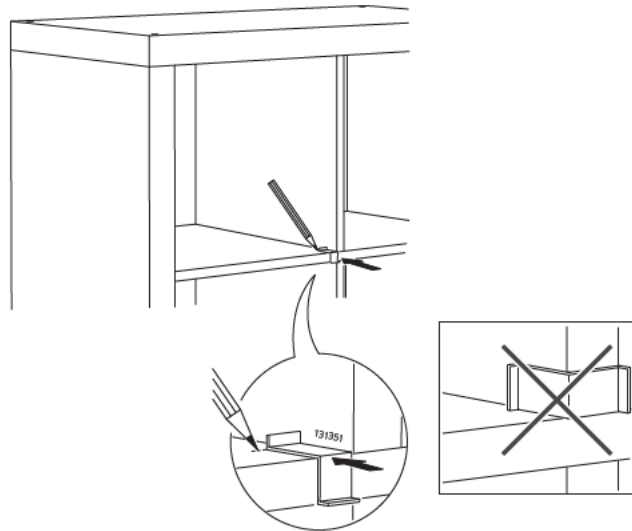


11

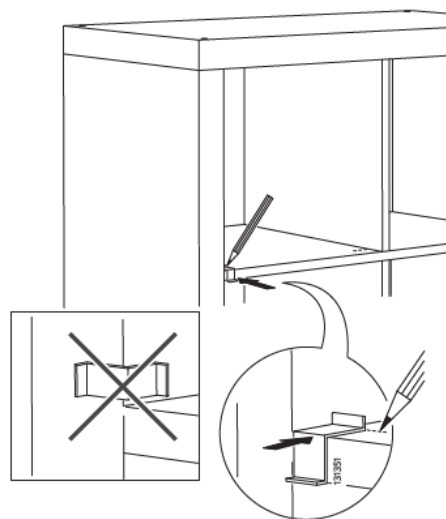




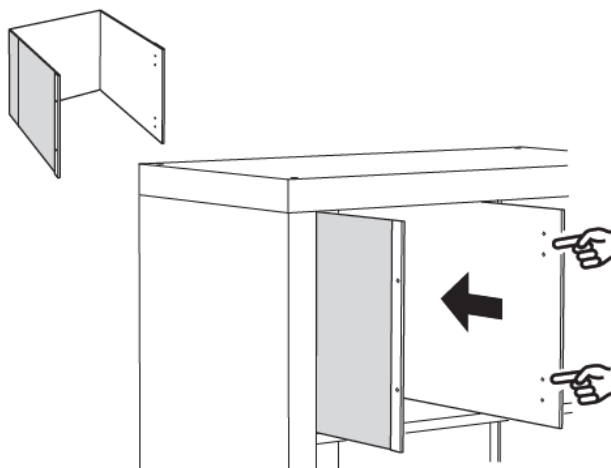
3



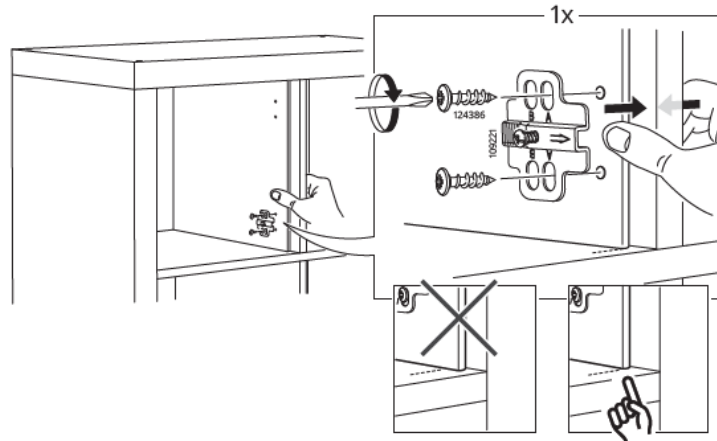
4



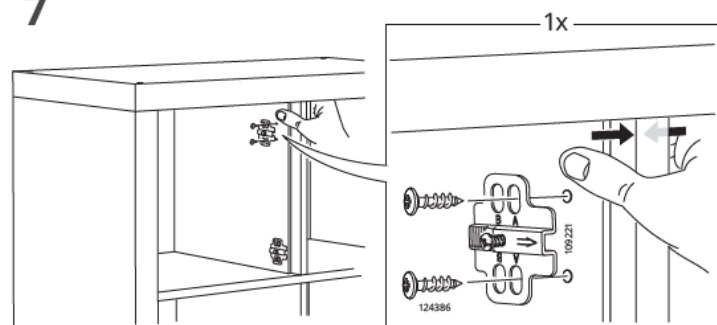
5



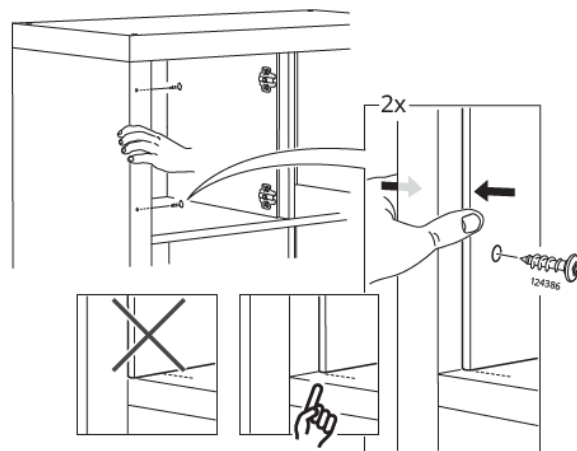
6



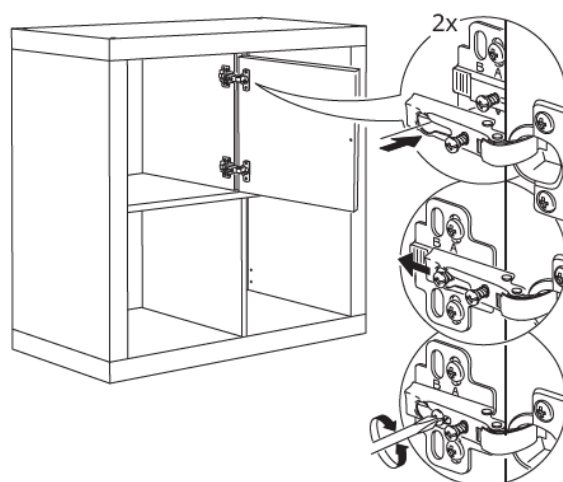
7



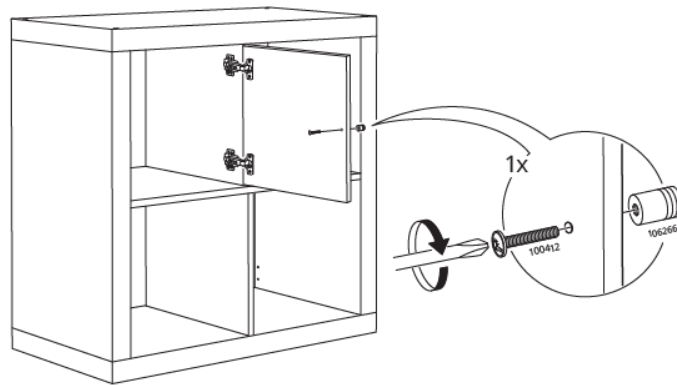
8



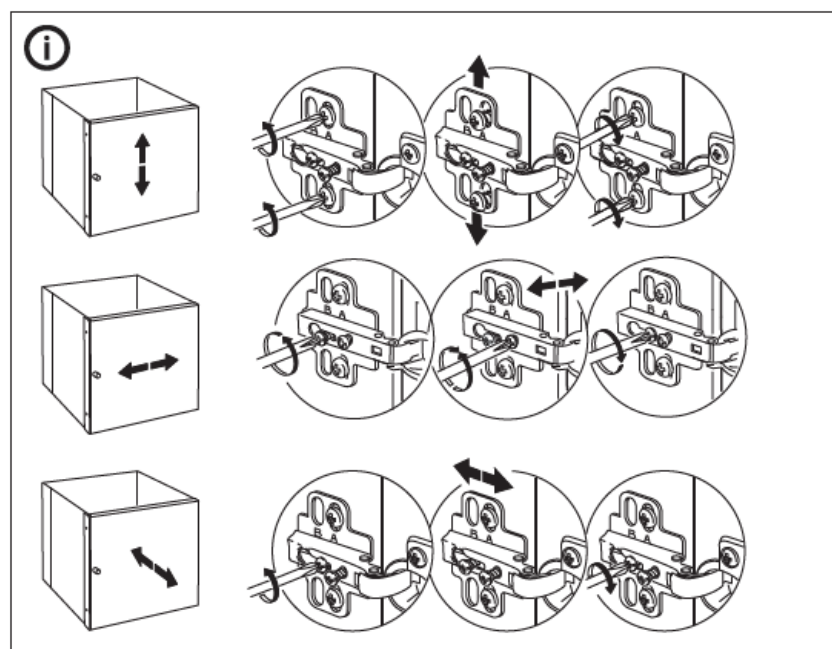
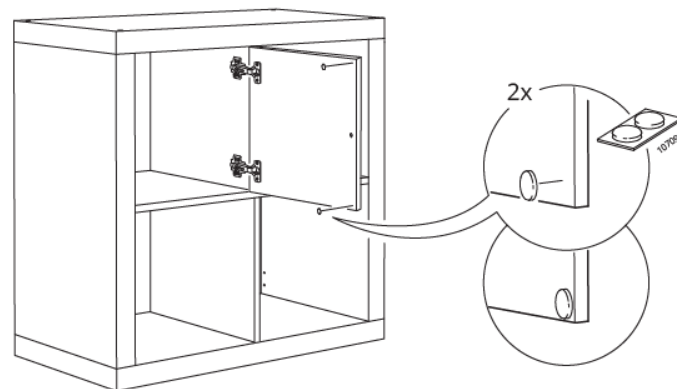
9



10



11



Placement and Maintenance:

- Place the assembled KALLAX unit on a flat and stable surface to prevent tipping.
- Regularly dust the unit with a soft, dry cloth to maintain its appearance.
- Avoid placing heavy items on the top shelves to prevent damage.

Frequently Asked Questions (FAQ)


Q: Are additional tools required for assembly?

A: No, all necessary tools are included in the package for assembly.

Q: Can the KALLAX unit be mounted on the wall?

A: It is recommended to place the KALLAX unit on the floor for stability and safety reasons. Wall mounting is not advised.

Documents / Resources

<p>KALLAX</p> 	<p>IKEA KALLAX Shelf with Doors [pdf] Instruction Manual 403.146.40, 202.781.67, 303.245.07, KALLAX Shelf with Doors, KALLAX, Shelf with Doors, Doors</p>
--	---

References

- [User Manual](#)

[Manuals+](#), [Privacy Policy](#)

This website is an independent publication and is neither affiliated with nor endorsed by any of the trademark owners. The "Bluetooth®" word mark and logos are registered trademarks owned by Bluetooth SIG, Inc. The "Wi-Fi®" word mark and logos are registered trademarks owned by the Wi-Fi Alliance. Any use of these marks on this website does not imply any affiliation with or endorsement.