



## Contents [ [hide](#) ]

[1 IKEA KALLAX Shelf Insert Drawer](#)

[2 Specifications](#)

[3 Product Usage Instructions](#)

[4 Assembly Tips](#)

[5 Safety Precautions](#)

[6 Warranty Information](#)

[7 FAQ](#)

[8 Documents / Resources](#)

[8.1 References](#)

IKEA- LOGO

## IKEA KALLAX Shelf Insert Drawer



## Specifications

- Product Name: KALLAX
- Design and Quality by IKEA of Sweden
- Model Number: AA-2088903-3
- Dimensions: 1062.66 mm x 1062.66 mm x 390 mm
- Weight: Not specified
- Material: Not specified

## Product Usage Instructions

1. Step 1: Unbox the KALLAX unit carefully to avoid any damage.
2. Step 2: Assemble the unit by following the provided assembly instructions.
3. Step 3: Place the assembled unit in the desired location.
4. Step 4: Organize your items on the shelves or compartments of the KALLAX unit.
5. Step 5: Enjoy the functionality and storage capacity of your KALLAX unit.

## Care and Maintenance

Ensure to regularly clean the KALLAX unit with a damp cloth to remove dust and dirt. Avoid using harsh chemicals that may damage the finish.

## Assembly Tips

It is recommended to assemble the KALLAX unit with the help of a second person to make the process easier and faster.

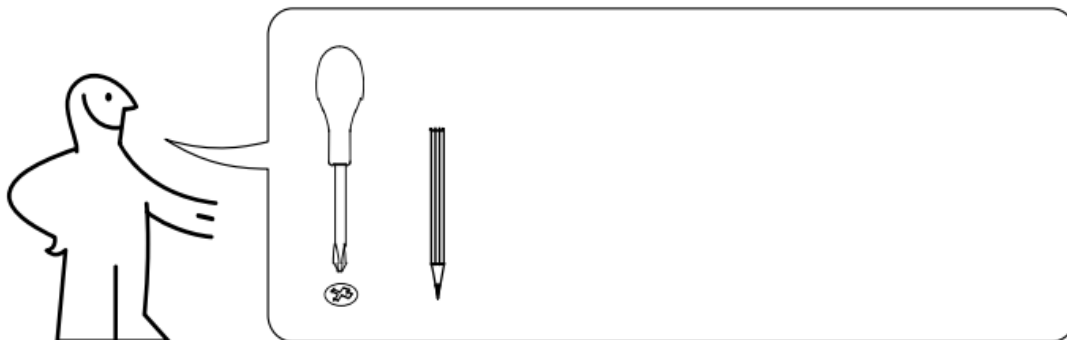
## Safety Precautions

Ensure that the KALLAX unit is placed on a stable and even surface to prevent tipping over. Secure it to the wall if necessary, especially if used in households with children.

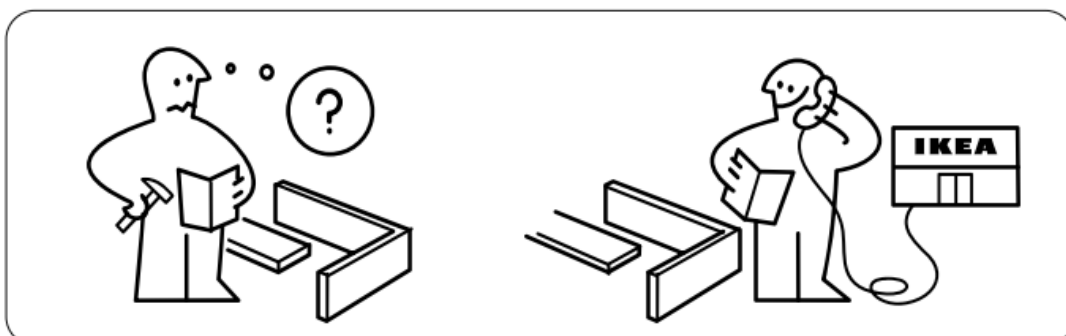
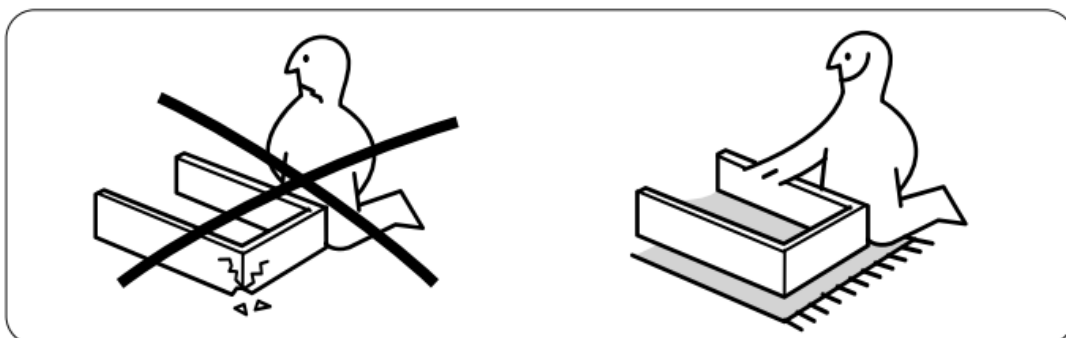
## Warranty Information

The KALLAX unit comes with a limited warranty. Refer to the warranty card or contact customer service for details.

## Tool



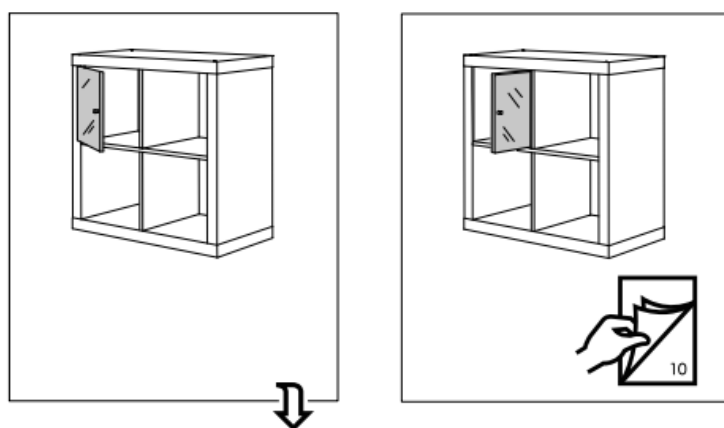
## Precaution



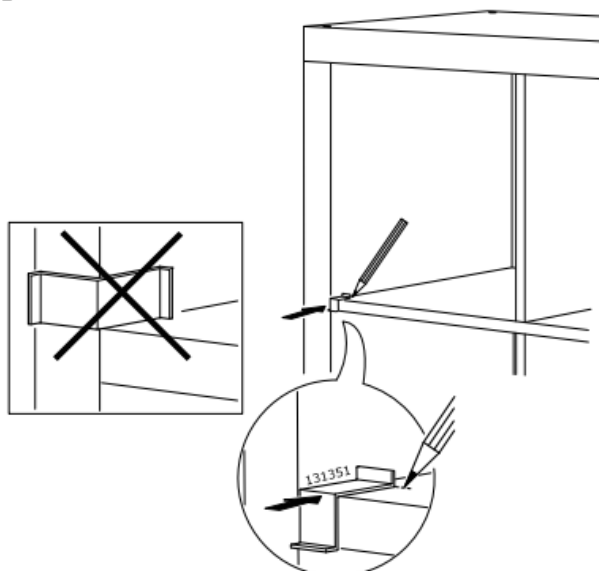
## Hardware

### IKEA-KALLAX-Shelf-Insert Drawer-fig3

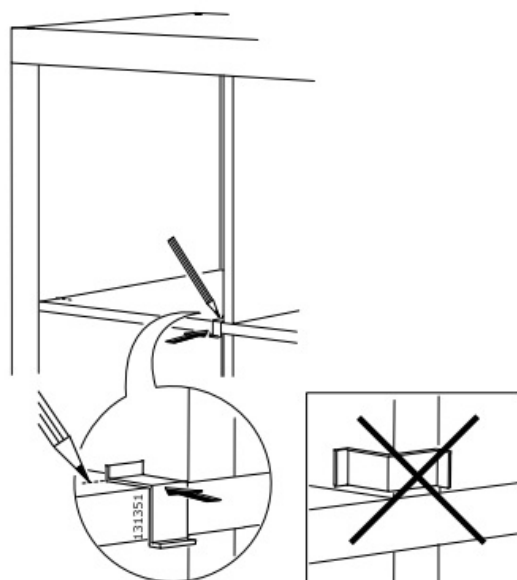
## installation



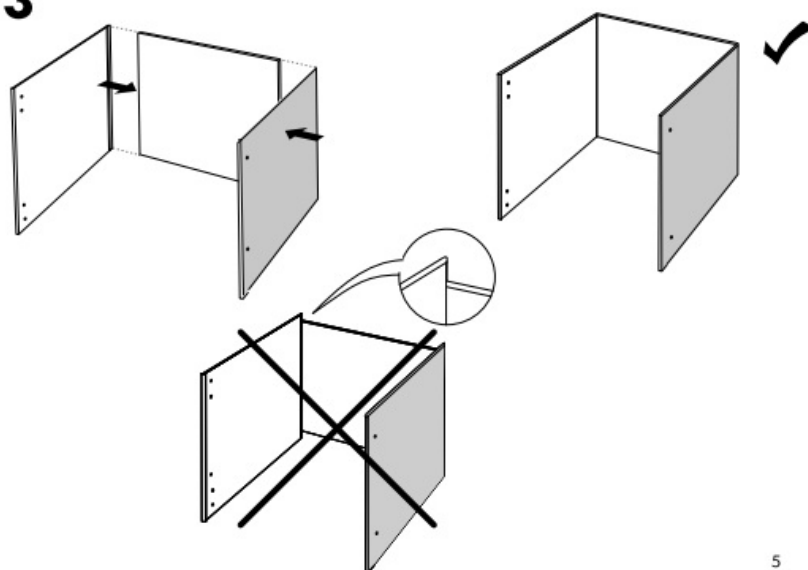
1



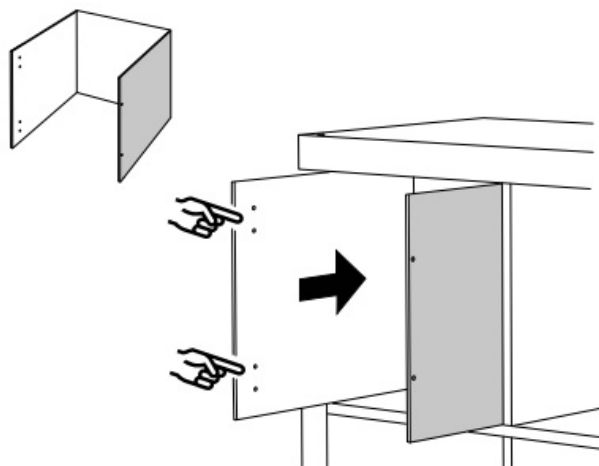
**2**



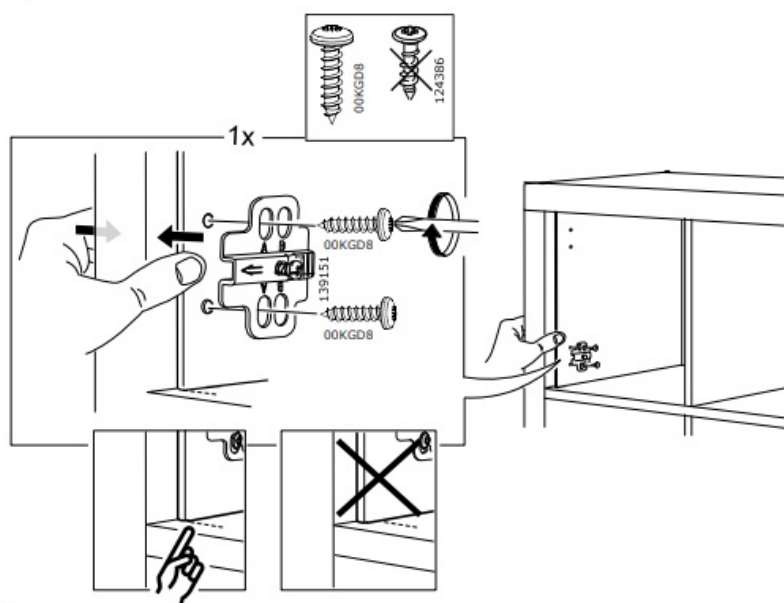
**3**



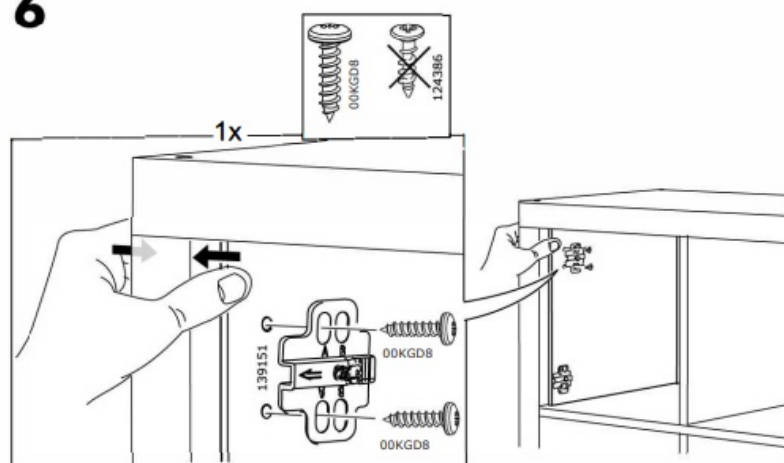
**4**



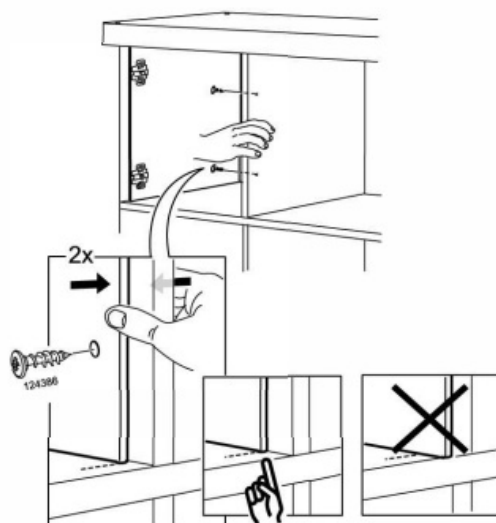
**5**



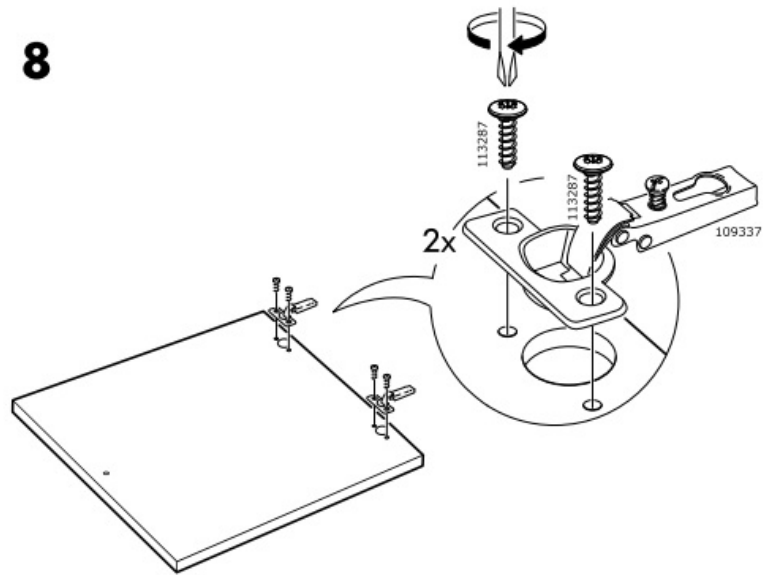
**6**



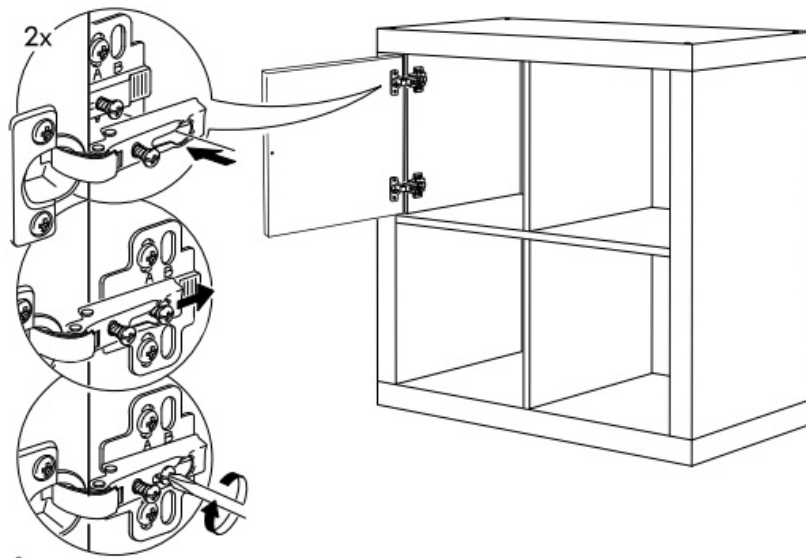
**7**



8

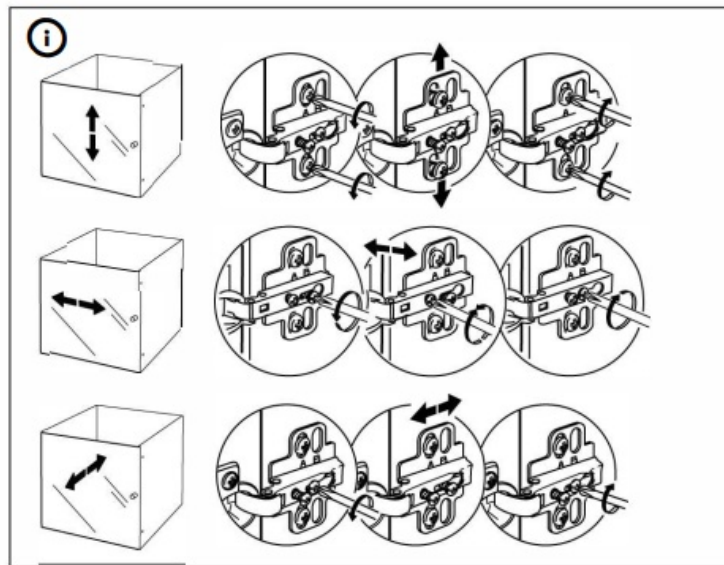
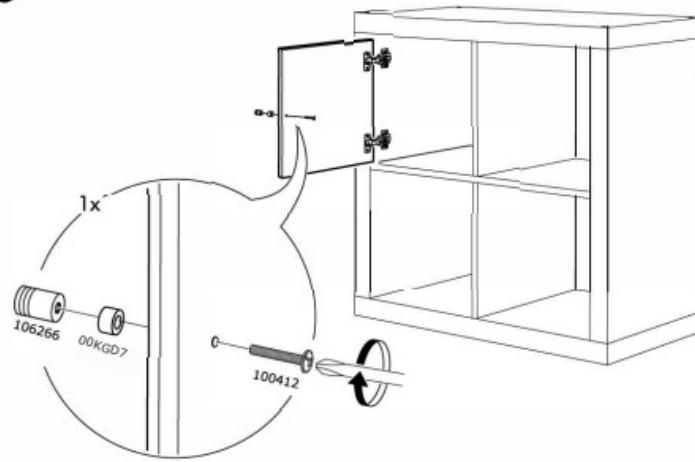


9



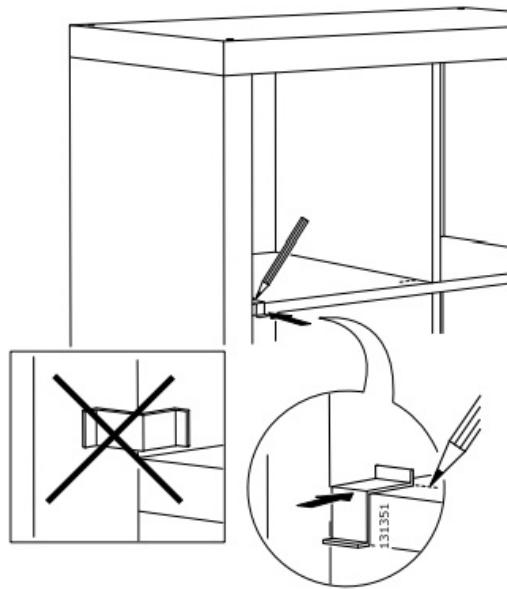


10

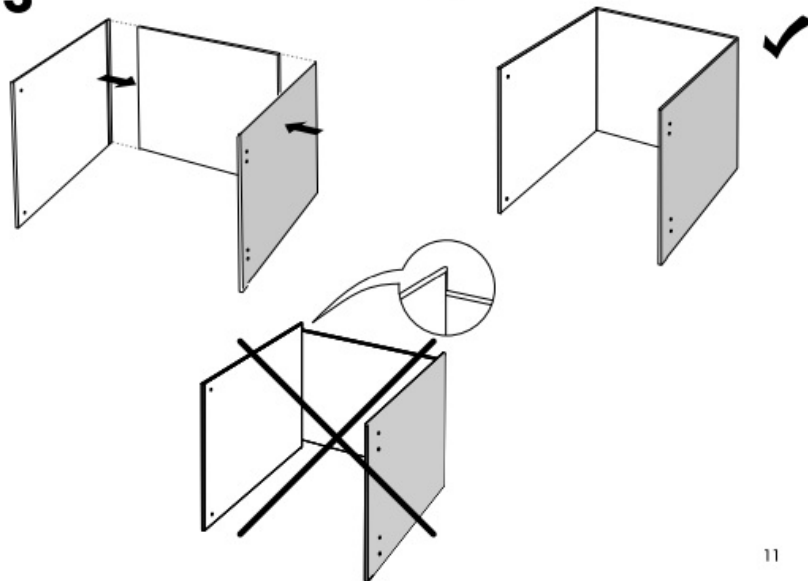


IKEA-KALLAX-Shelf-Insert Drawer-fig9

**2**



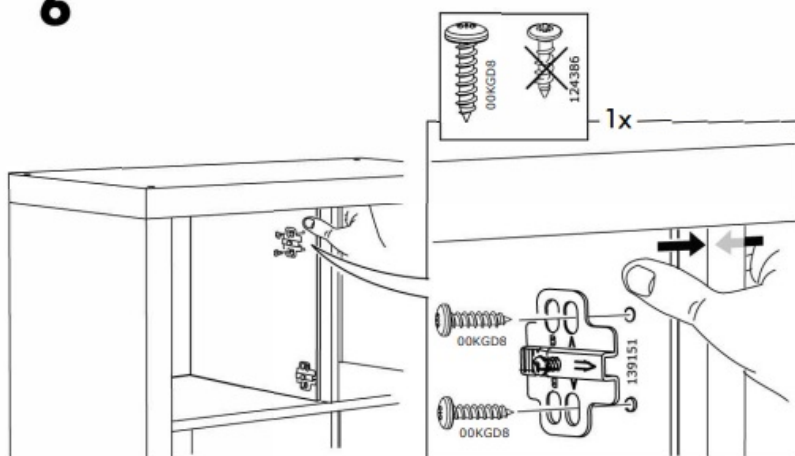
**3**



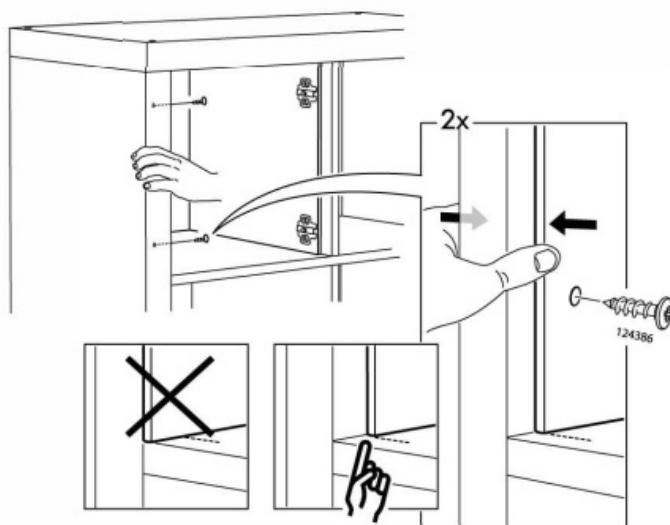
11

**IKEA-KALLAX-Shelf-Insert Drawer-fig12**

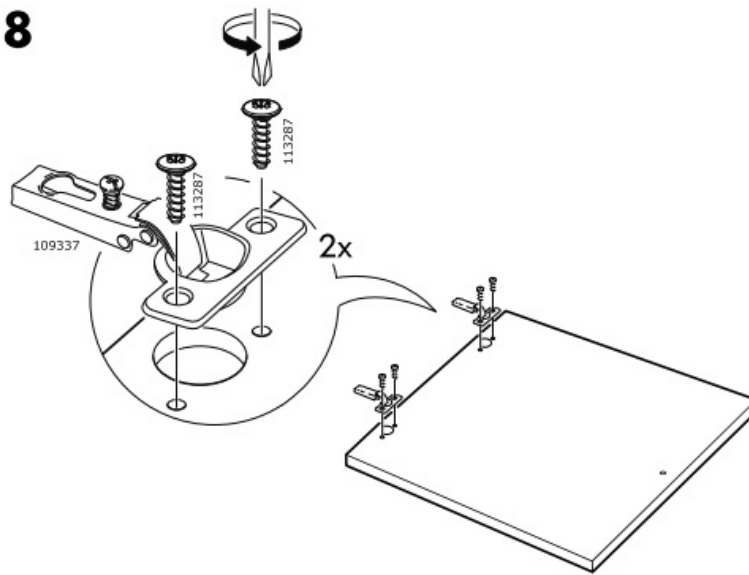
6



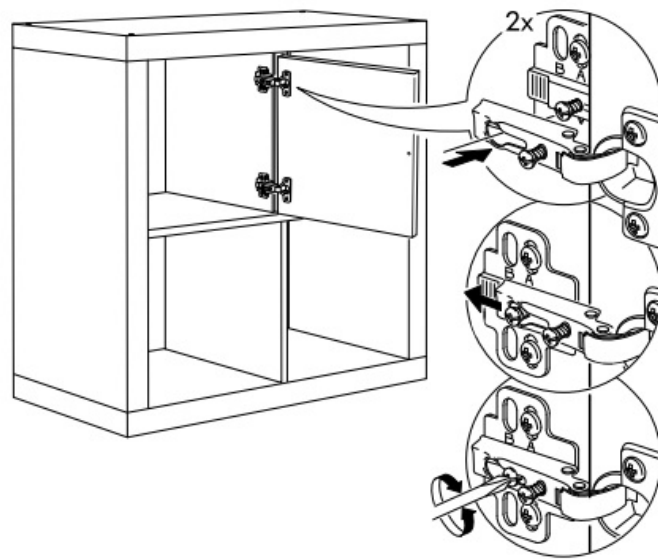
7



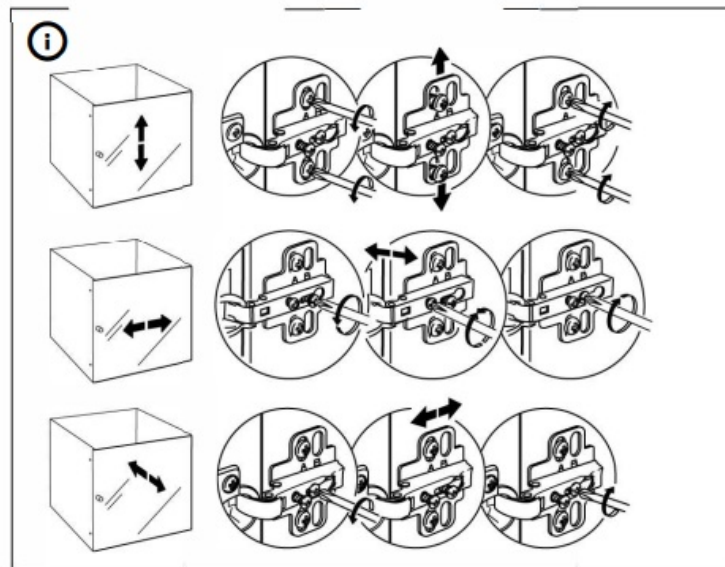
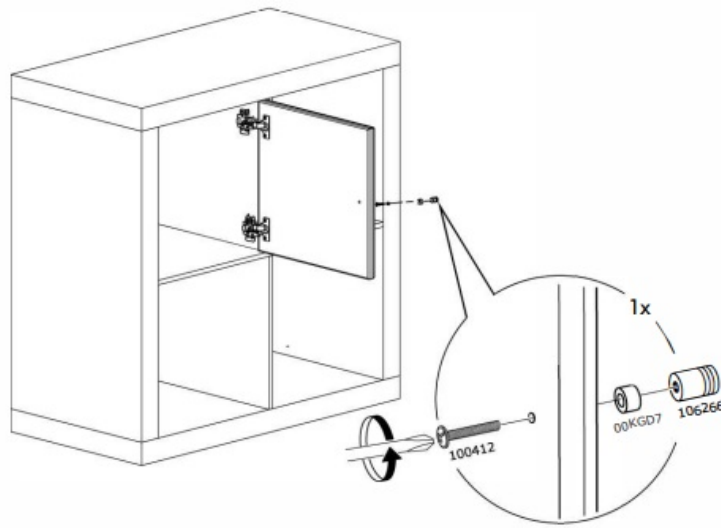
8



9



**10**



## FAQ

Q: Can I paint or customize my KALLAX unit?

A: It is not recommended to paint or modify the KALLAX unit as it may void the warranty and affect its structural integrity.

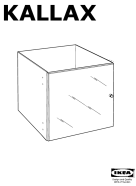
Q: How many shelves does the KALLAX unit come with?

A: The number of shelves included may vary depending on the specific KALLAX model purchased. Refer to the product description or packaging for details.

Q: Is the KALLAX unit suitable for outdoor use?

A: No, the KALLAX unit is designed for indoor use only and should not be exposed to outdoor elements.

## Documents / Resources

	<a href="#">IKEA KALLAX Shelf Insert Drawer [pdf]</a> Installation Guide AA-2088903-3, 00KGD8, 00KGD7, KALLAX Shelf Insert Drawer, KALLAX , Shelf Insert Drawer, Insert Drawer
---	---

## References

- [User Manual](#)

🔍 00KGD7, 00KGD8, AA-2088903-3, Ikea, Insert Drawer, KALLAX, KALLAX Shelf Insert Drawer, Shelf Insert  
📁 Ikea    Drawer

---

## Leave a comment

Your email address will not be published. Required fields are marked \*

Comment \*

Name

Email

Website

☐ Save my name, email, and website in this browser for the next time I comment.

**Post Comment**

**Search:**

**Search**

[Manuals+](#) | [Upload](#) | [Deep Search](#) | [About Us](#) | [Privacy Policy](#) | [@manuals.plus](#) | [YouTube](#) | [LinkedIn](#) | [FaceBook](#)

This website is an independent publication and is neither affiliated with nor endorsed by any of the trademark owners. The "Bluetooth®" word mark and logos are registered trademarks owned by Bluetooth SIG, Inc. The "Wi-Fi®" word mark and logos are registered trademarks owned by the Wi-Fi Alliance. Any use of these marks on this website does not imply any affiliation with or endorsement.