



IKEA KALLAX Insert with Door Instruction Manual

[Home](#) » [Ikea](#) » IKEA KALLAX Insert with Door Instruction Manual 

Contents

- [1 KALLAX Insert with Door](#)
- [2 Product Information](#)
- [3 Product Usage Instructions](#)
- [4 TOOLS](#)
- [5 INSTALLATION INSTRUCTION](#)
- [6 Documents / Resources](#)



KALLAX Insert with Door



Product Information

KALLAX

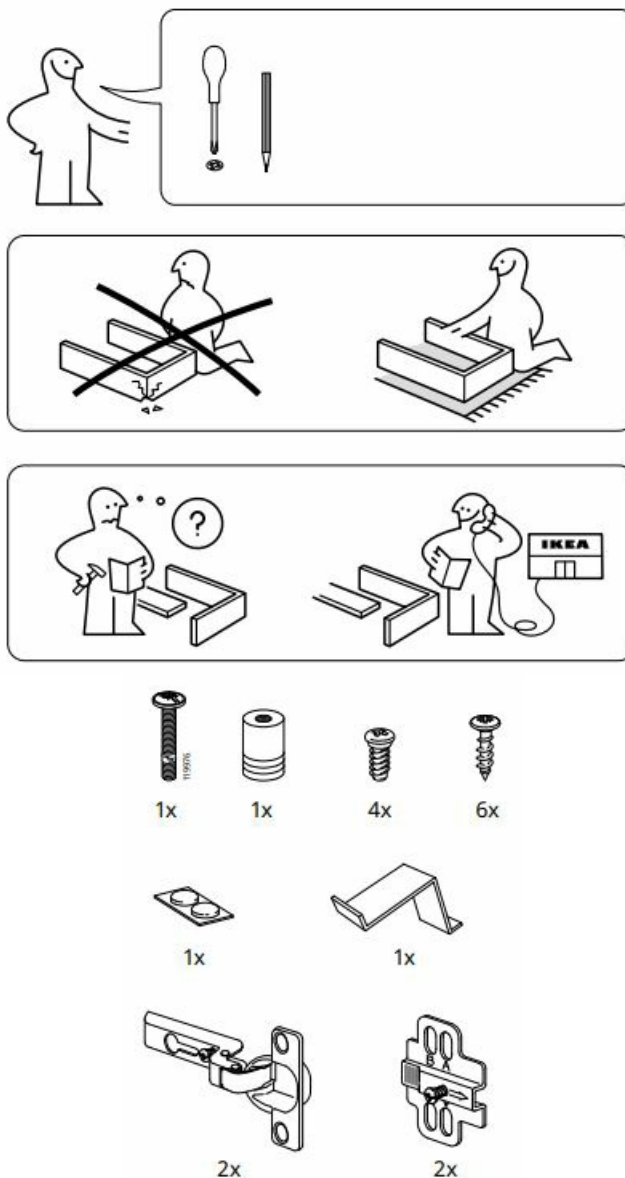
The KALLAX is a storage unit that comes with the following components:

- 1x unit
- 1x instruction manual (AA-1009339-5)
- 4x dowels
- 6x screws
- 1x screwdriver
- 1x wall bracket
- 2x wooden dowels
- 2x plastic feet
- 3x shelves

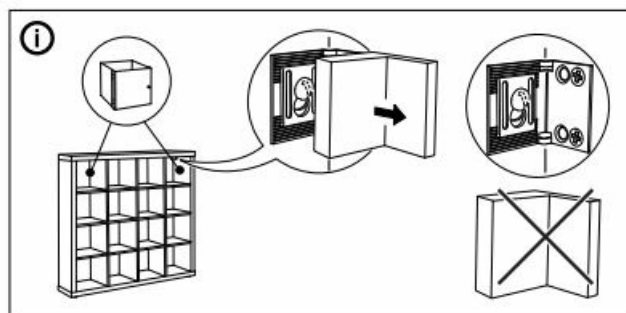
Product Usage Instructions

1. Start by unpacking all the components and checking that everything is included as per the list above.
2. Assemble the unit according to the instruction manual provided (AA-1009339-5).
3. Once assembled, attach the wall bracket to the back of the unit using the screws and dowels provided.
4. Securely mount the unit to the wall using appropriate hardware (not included).
5. If desired, attach the plastic feet to the bottom of the unit to prevent scratching on the floors.
6. Place the shelves into the unit at desired heights.
7. Your KALLAX storage unit is now ready to use!

TOOLS

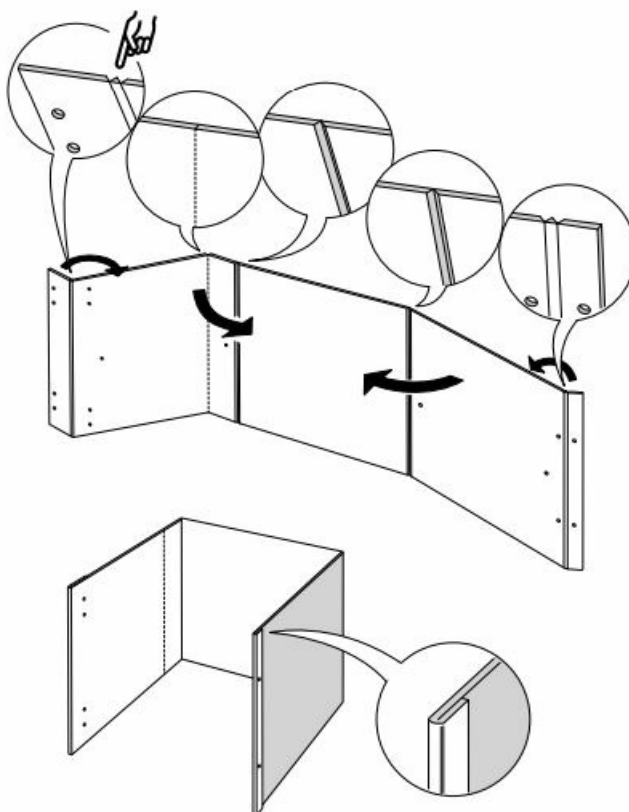


WARNING

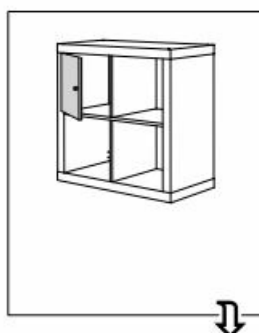
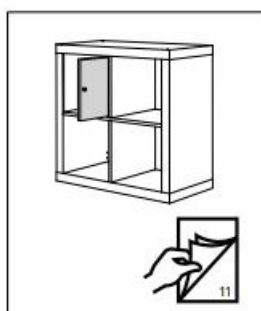
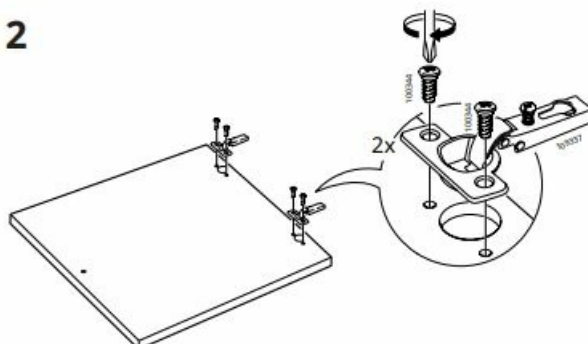


INSTALLATION INSTRUCTION

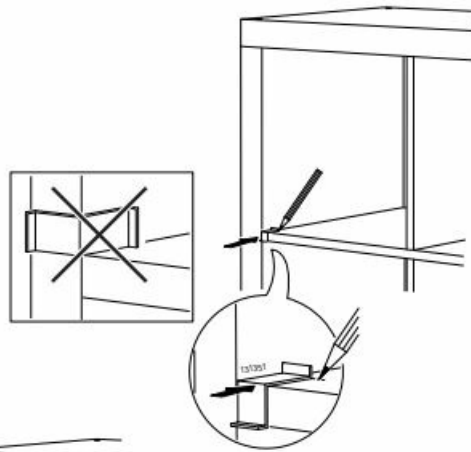
1



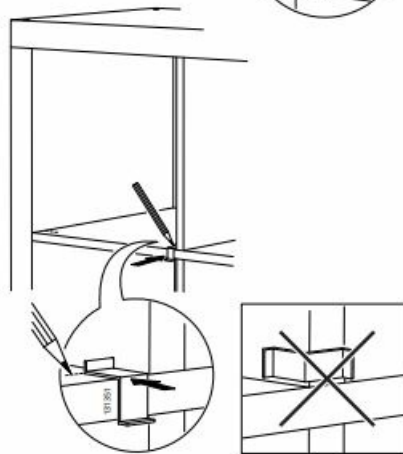
2



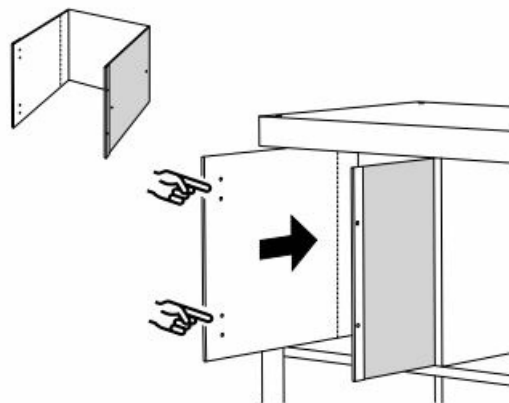
3



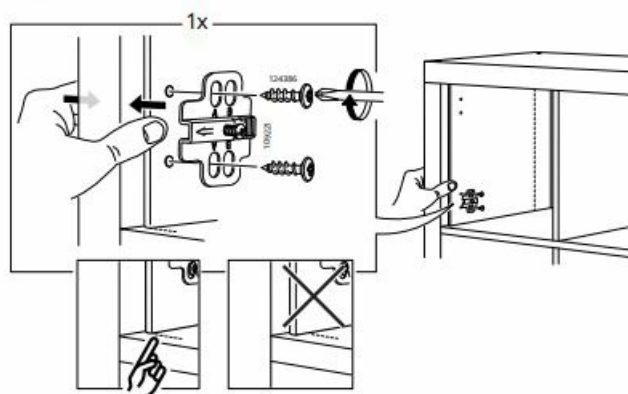
4



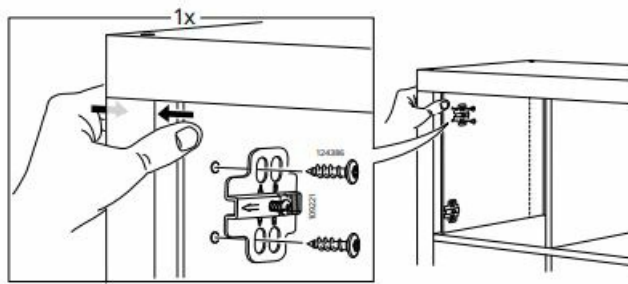
5



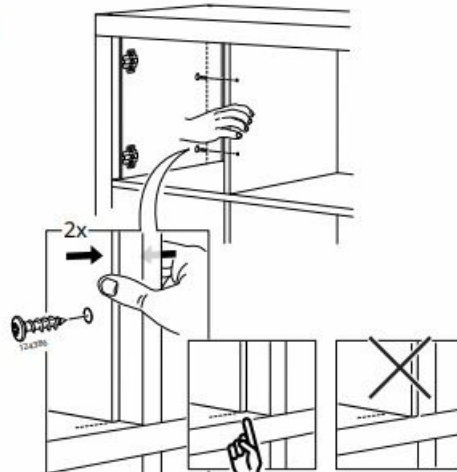
6



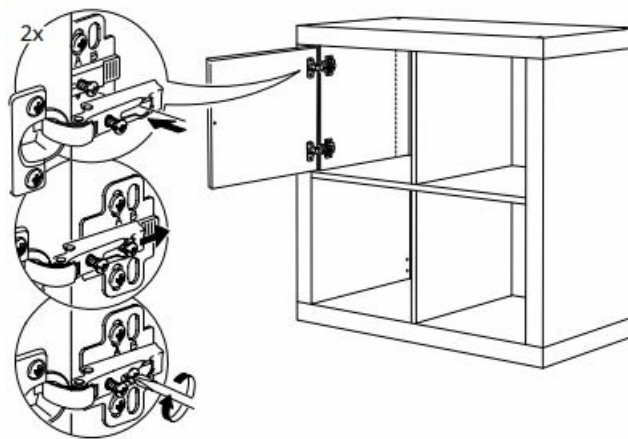
7



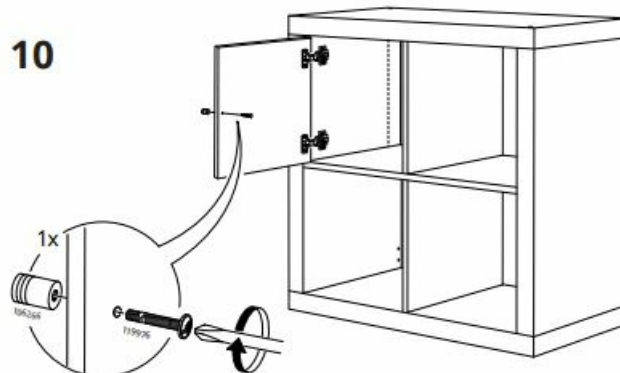
8



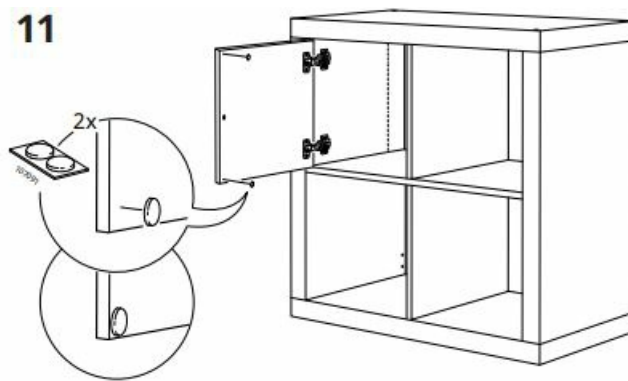
9



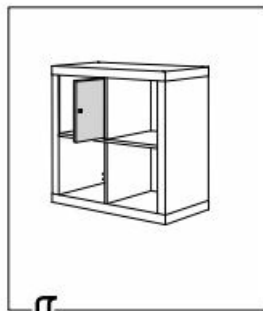
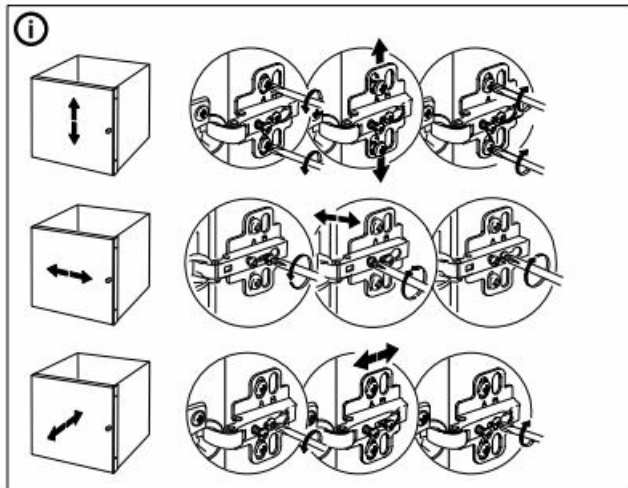
10



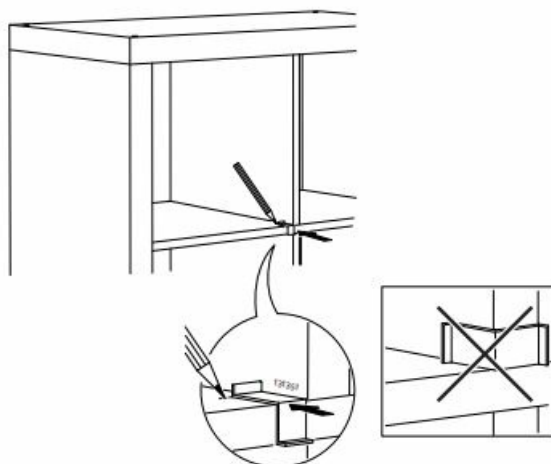
11



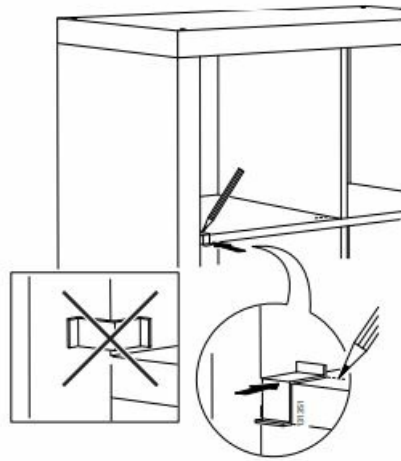
i



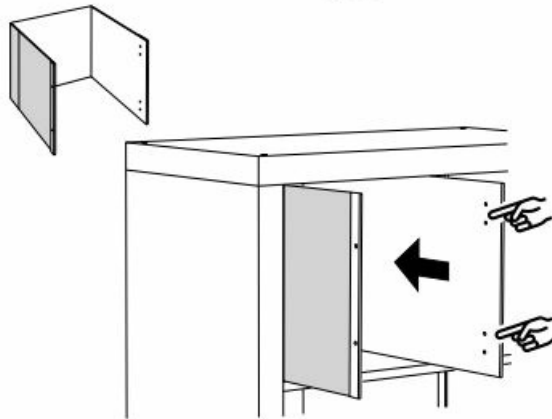
3



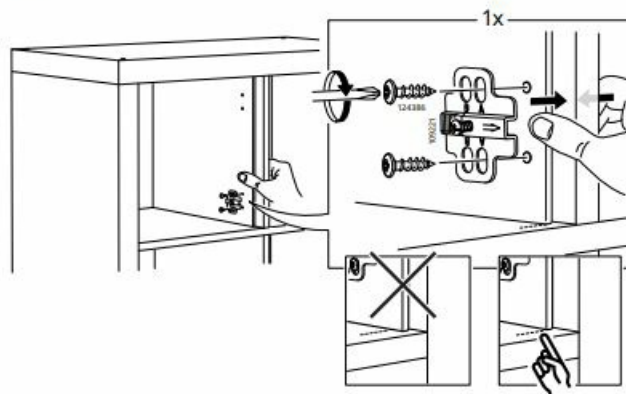
4



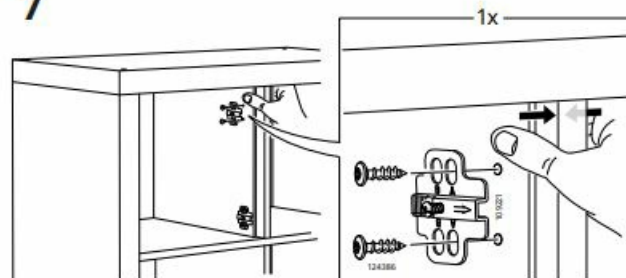
5



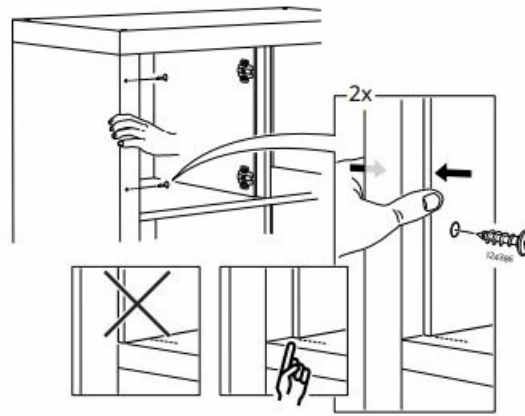
6



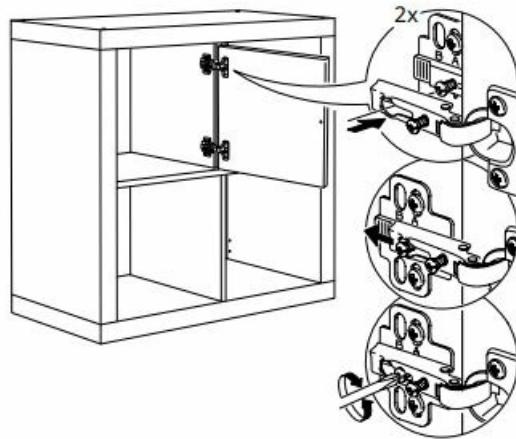
7



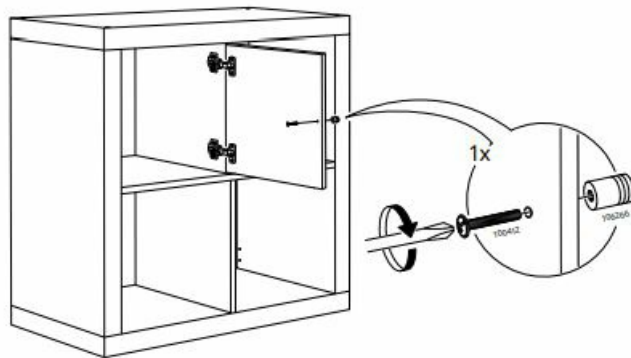
8



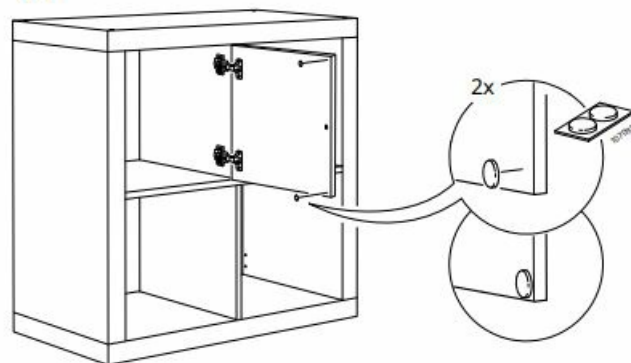
9

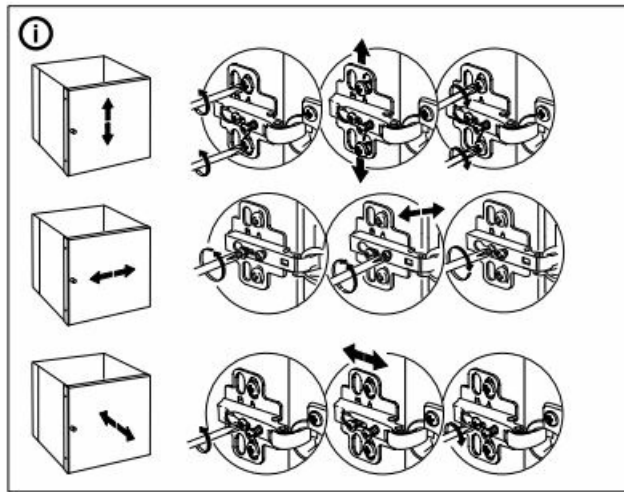


10



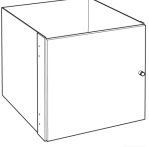

11





© Inter IKEA Systems B.V. 2013 2023-02-10 AA-1009339-5

Documents / Resources

<p>KALLAX</p>  	<p>IKEA KALLAX Insert with Door [pdf] Instruction Manual KALLAX Insert with Door, KALLAX, Insert with Door, Insert</p>
---	--