



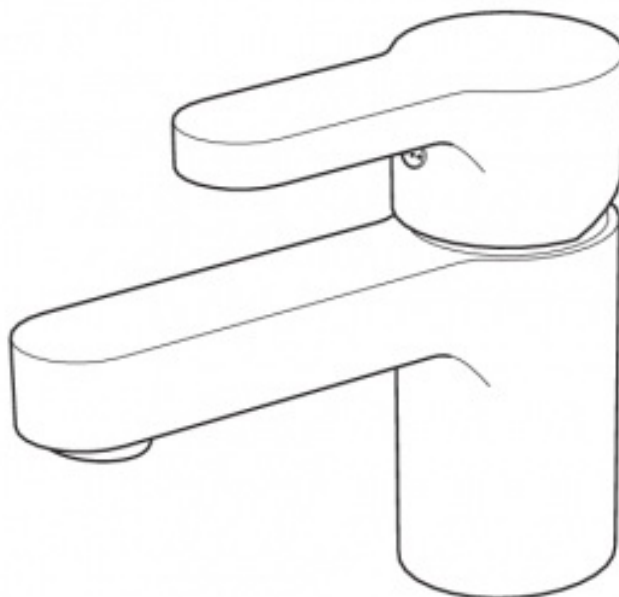
## IKEA ENSEN Instructions

[Home](#) » [Ikea](#) » IKEA ENSEN Instructions

### Contents [ [hide](#) ]

- [1 IKEA ENSEN Instructions](#)
- [2 English](#)
- [3 Read More About This Manual & Download PDF:](#)
- [4 Documents / Resources](#)
- [5 Related Posts](#)

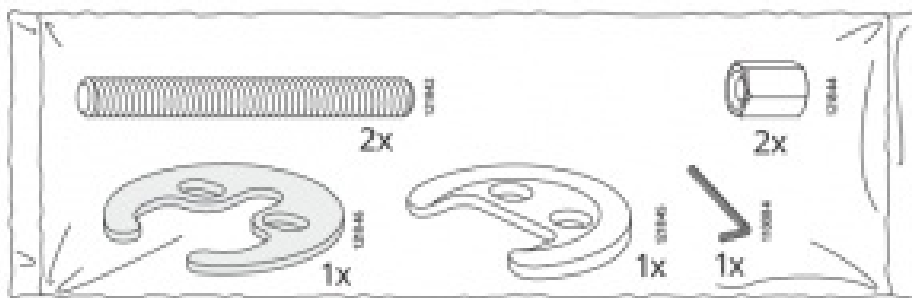
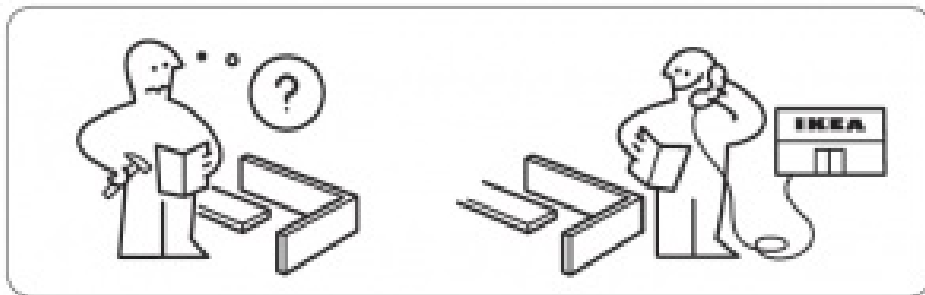
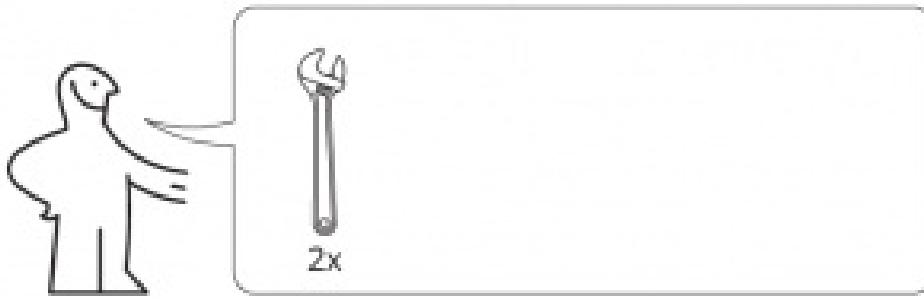
### IKEA ENSEN Instructions



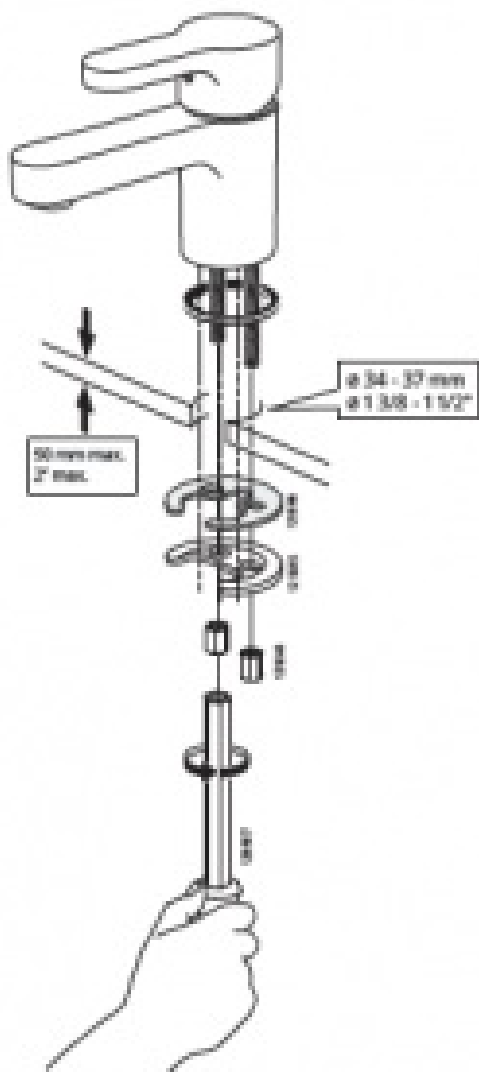
## English

Installation must be performed in compliance with current local construction and plumbing regulations. If in doubt, contact a professional.

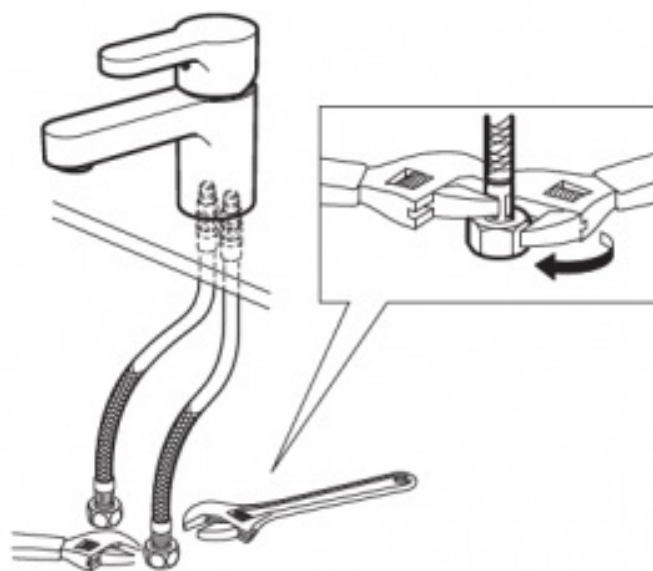
Switch off main shut-off valve before changing mixer tap.

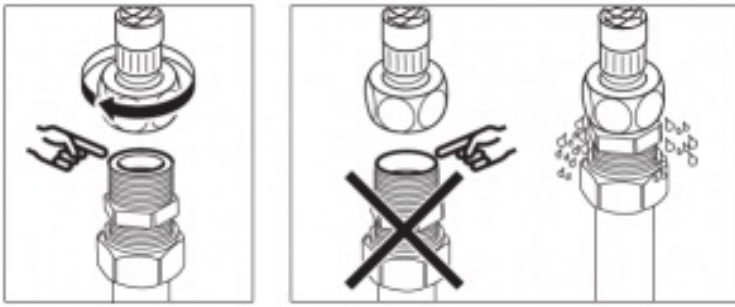




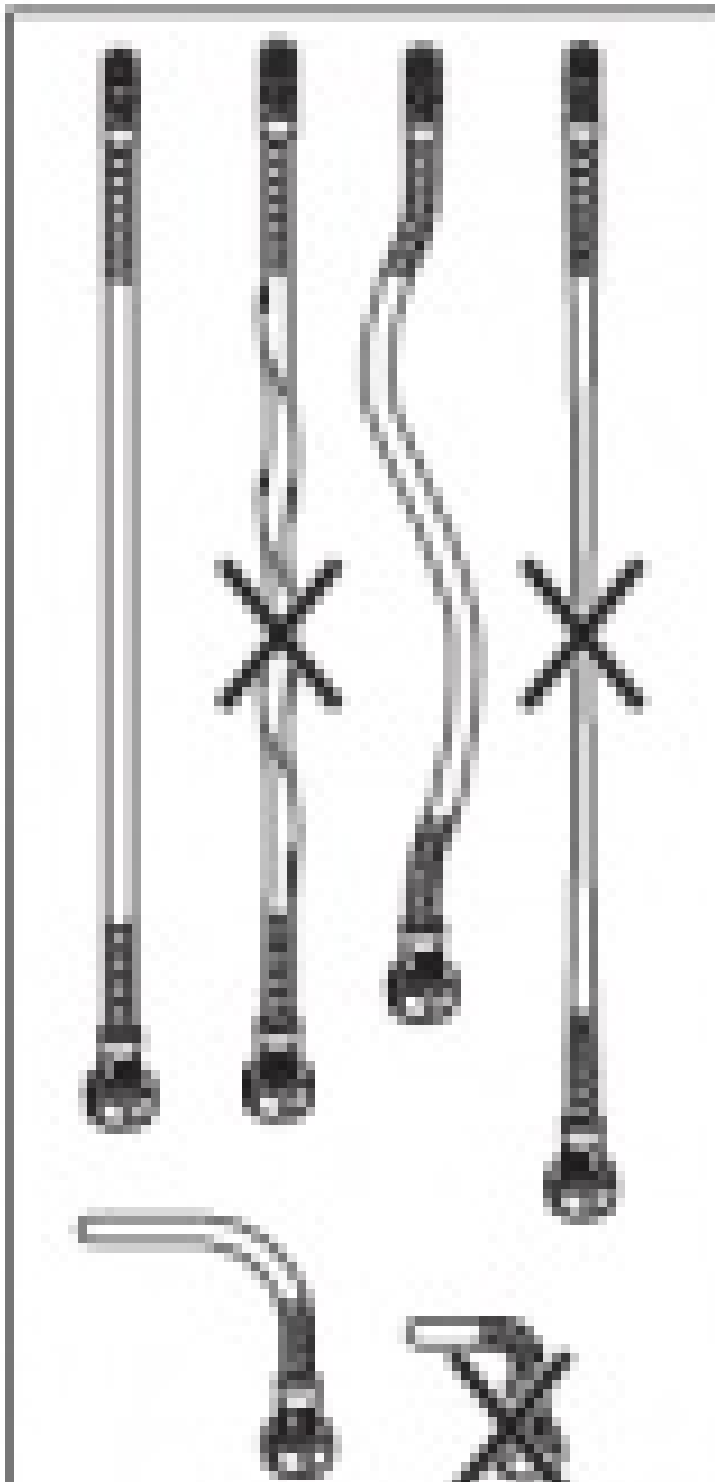


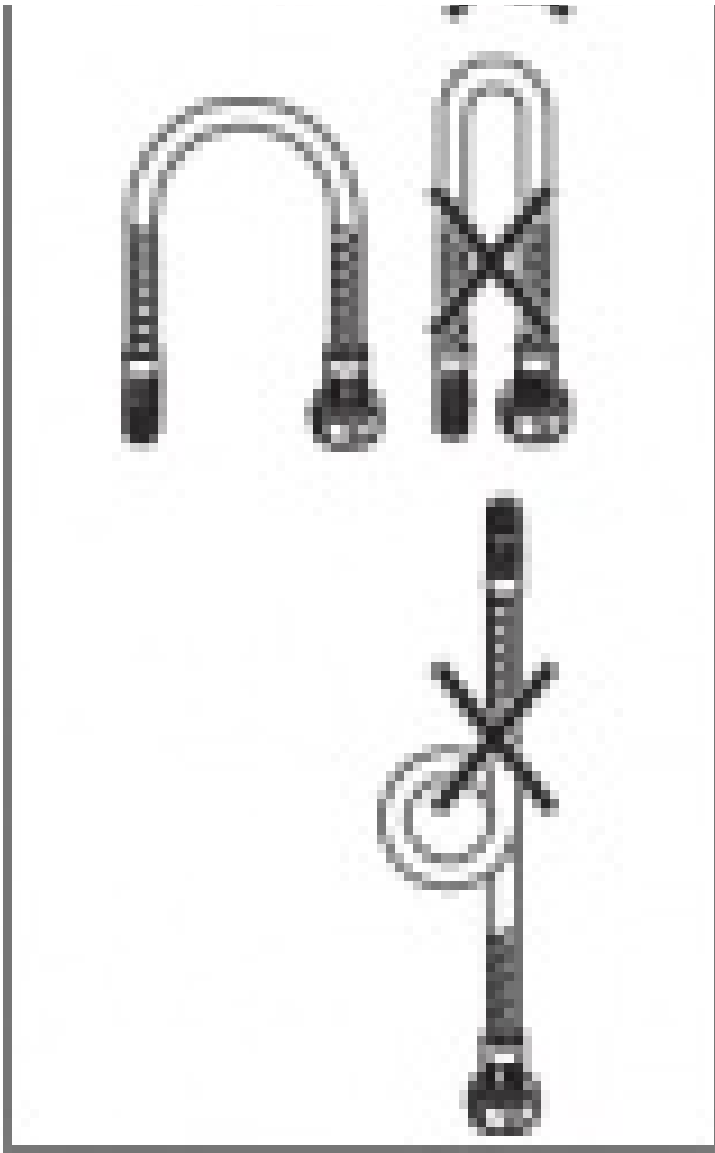
2.



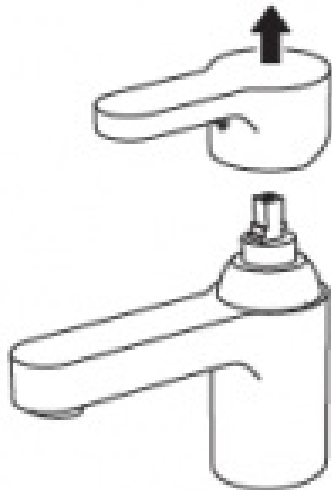
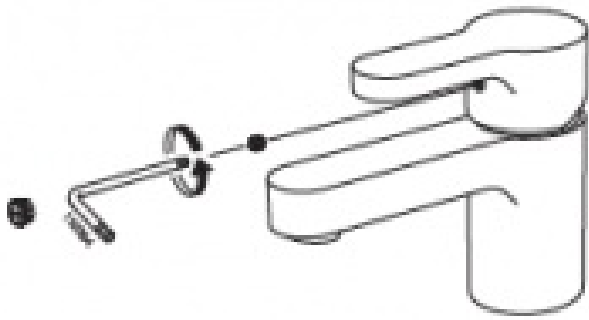


**IMPORTANT!** Do not tighten too hard: this can damage hoses/pipes and washers.



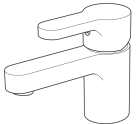



Before use: Unscrew the Aerator/Flow Guide and allow the water to run freely for a few minutes. Then screw the Aerator/Flow Guide back in place. Ensure that it is tight to prevent removal by hand.



***Read More About This Manual & Download PDF:***

## Documents / Resources

<p><b>ENSEN</b></p>  	<p><a href="#">IKEA ENSEN</a> [pdf] Instructions ENSEN</p>
---	--