

[Skip to content](#)

Manuals+

User Manuals Simplified.



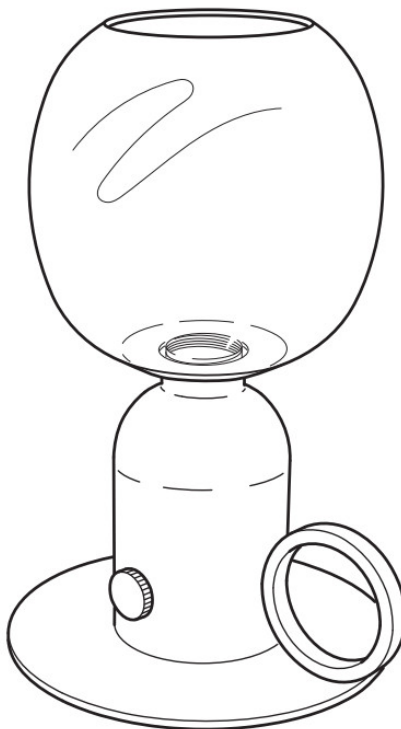
IKEA ASKMULLER Table Lamp with LED Bulb Instruction Manual

[Home](#) » [Ikea](#) » IKEA ASKMULLER Table Lamp with LED Bulb Instruction Manual



Design and Quality
IKEA of Sweden

ASKMULLER Table Lamp with LED Bulb



Instruction Manual

Contents [hide](#)

[1 IMPORTANT SAFETY INSTRUCTIONS](#)

[2 Documents / Resources](#)

[3 Related Posts](#)

IMPORTANT SAFETY INSTRUCTIONS



This product has a polarized plug (one blade is wider than the other) as a feature to reduce the risk of electric shock. This plug will fit in a polarized outlet only one way. If the plug does not fit fully in the outlet, reverse the plug. If it still does not fit, contact a qualified electrician. Never use an extension cord unless the plug can be fully inserted. Do not attempt to defeat the safety purpose of the polarized attachment plug. Do not alter the plug.

CAUTION:

TO PREVENT ELECTRICAL SHOCK, MATCH WIDE BLADE OF PLUG TO WIDE SLOT, FULLY INSERT.

WARNING

Deviation from the assembly instructions may result in a risk of fire or electric shock.

This device complies with part 15 of the FCC Rules. Operation is subjected to the following two conditions:

1. This device may not cause harmful interference, and
2. this device must accept any interference received, including interference that may cause undesired operation.

WARNING

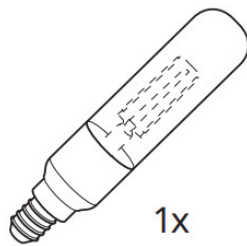
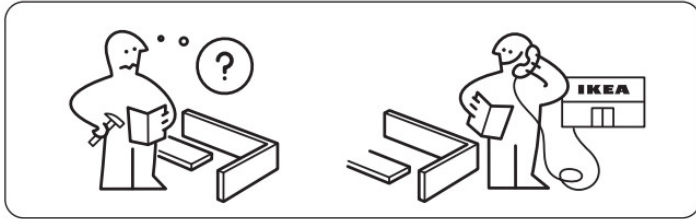
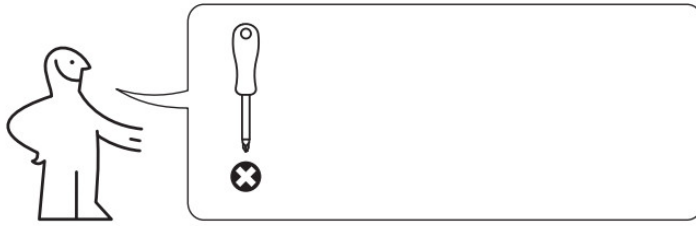
Changes or modifications not expressly approved by the party responsible for compliance could void the user's authority to operate the equipment.

Note: This equipment has been tested and found to comply with the limits for a Class B digital device, pursuant to part 15 of the FCC Rules.

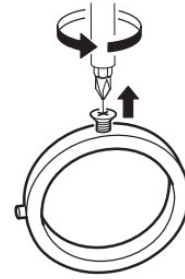
These limits are designed to provide reasonable protection against harmful interference in a residential installation. This equipment generates, uses, and can radiate radio frequency energy and, if not installed and used in accordance with the instructions, may cause harmful interference to radio communications. However, there is no guarantee that interference will not occur in a particular installation.

If this equipment does cause harmful interference to radio or television reception, which can be determined by turning the equipment off and on, the user is encouraged to try to correct the interference by one or more of the following measures:

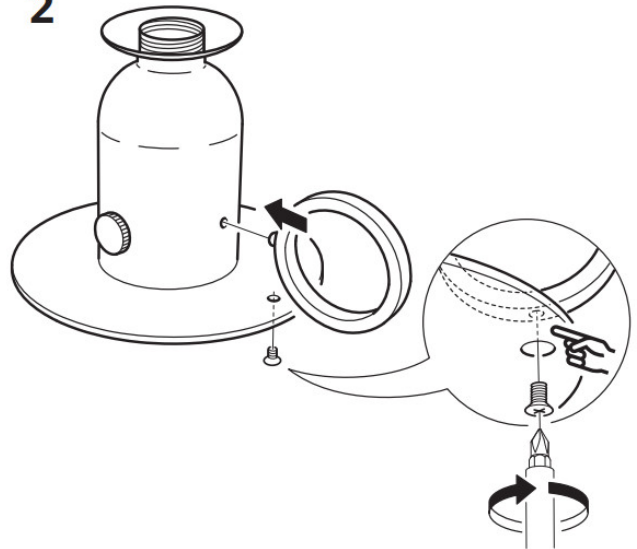
- Reorient or relocate the receiving antenna.
- Increase the separation between the equipment and receiver.
- Connect the equipment into an outlet on a circuit different from that to which the receiver is connected.
- Consult the dealer or an experienced radio/TV technician for help.



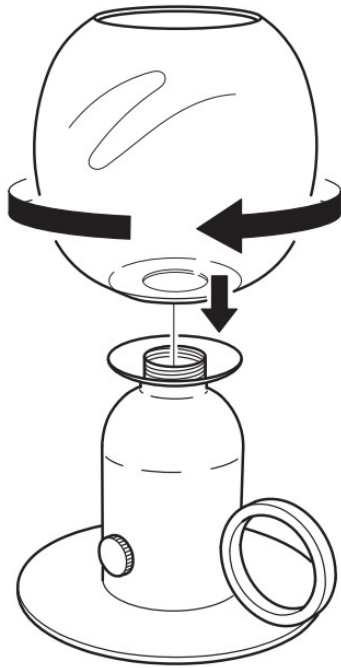
1



2

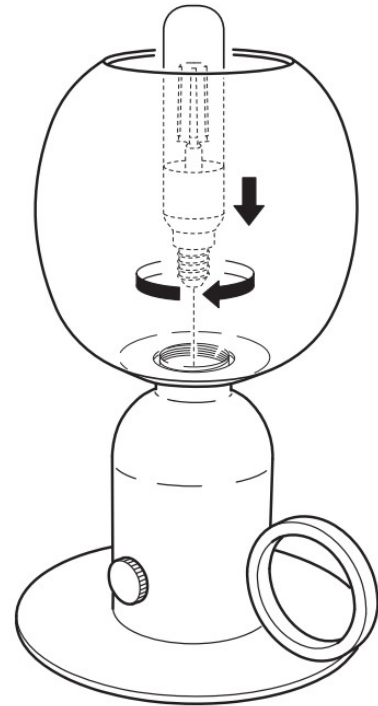


3

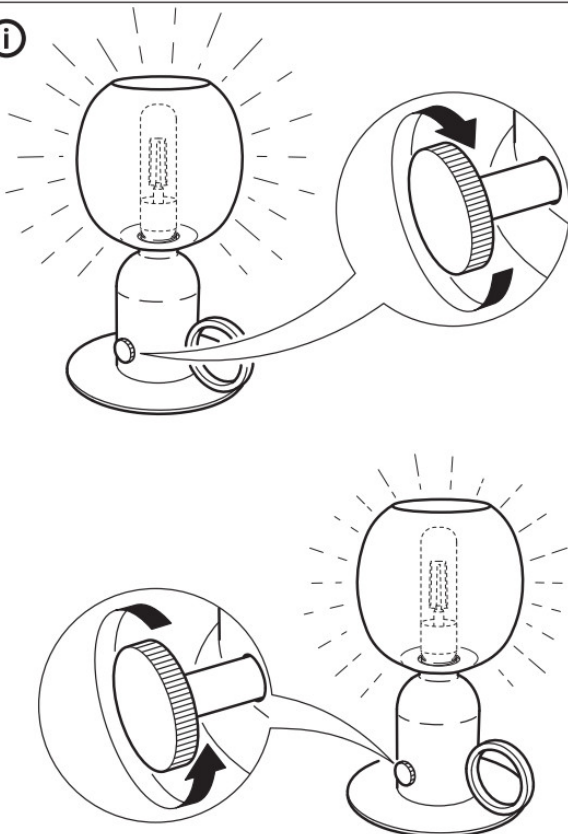


English
CAUTION!
Do not overtighten.

4



i



ASKMULLER



[IKEA ASKMULLER Table Lamp with LED Bulb](#) [pdf] Instruction Manual

ASKMULLER, Table Lamp with LED Bulb, ASKMULLER Table Lamp with LED Bulb, ASKMULLER Table Lamp, Table Lamp

[Manuals+](#),

- [home](#)
- [privacy](#)