



iJoy IJ10389-FB Translucent Wireless Keyboard



iJoy IJ10389-FB Translucent Wireless Keyboard User Manual

[Home](#) » [iJOY](#) » iJoy IJ10389-FB Translucent Wireless Keyboard User Manual 

Contents

- [1 iJoy IJ10389-FB Translucent Wireless Keyboard](#)
- [2 PRODUCT SPECIFICATIONS](#)
- [3 CONNECTING THE WIRELESS KEYBOARDS](#)
- [4 SAFETY INFORMATION](#)
- [5 FCC ID STATEMENT](#)
- [6 Documents / Resources](#)
 - [6.1 References](#)
- [7 Related Posts](#)



iJoy IJ10389-FB Translucent Wireless Keyboard



YOUR IJOY PRODUCT

Thank you for purchasing and using the LED “IJOY KEYBOARD”. Before using this product, carefully read this manual to in order to operate at maximum benefit. Please ask your local dealer or call us if you have any questions.

WOY KEYBOARD x 1

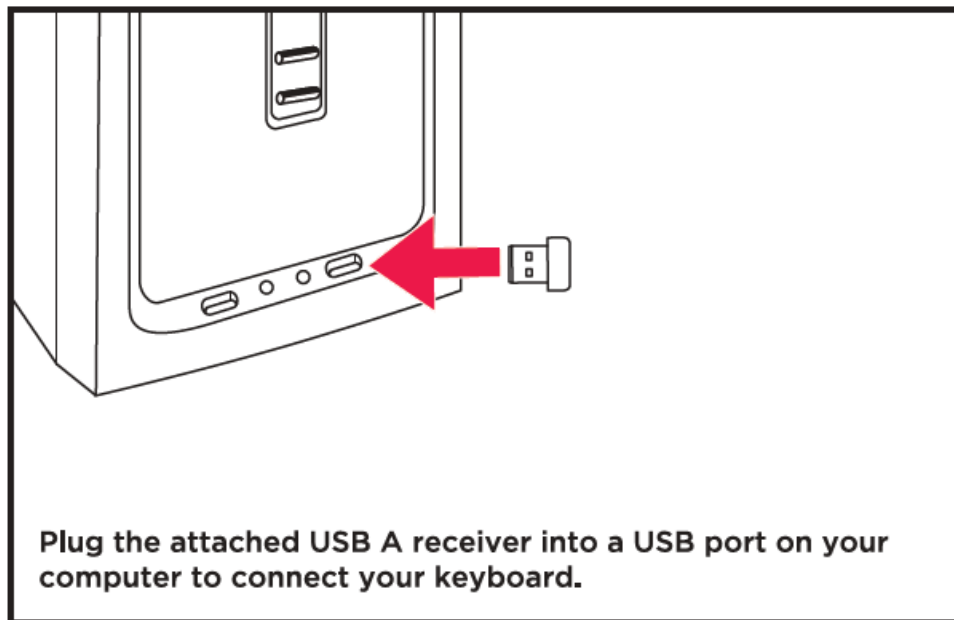
User Manual x 1

PRODUCT SPECIFICATIONS

- **Wireless Distance:** 10m/32.8ft.
- **Working Current:** 6 mA
- **Working Voltage:** 3V
- **Battery Requirement:** 2 x AAA alkaline battery(Not Included)
- **Model:** IJ10389-FB; IJ10390-FB
- With a USB A receiver Without LED light
- System switching method:
 - FN+A switches to MAC system
 - FN+S switches to WIN system

CONNECTING THE WIRELESS KEYBOARDS

- Put 2 x AAA batteries into the battery compartment on the back (not included).
- Turn the back switch to “ON”.
- Plug the attached USB A receiver into a USB port on your computer to connect your keyboard.



SAFETY INFORMATION

OTHER IMPORTANT SAFETY INFORMATION

Disposal of old electronic & electronic equipment (Applicable in the European Union and other European Countries with separate collection systems) The trash can symbol (seen on the bottom) on the production indicates that this product shall not be treated as household waste. Instead it shall be handed over to the applicable collection point for recycling of electronic equipment. By ensuring this product is disposed of correctly, you will help prevent potential negative consequences for the environment and human health, which could otherwise be caused by inappropriate waste handling. For more detailed information about this product, please contact your local household waste disposal service or the shop where you purchased this item.

NOTES

- While connected, the keyboard will enter standby mode without any operation, and after 3 minutes without operation it will enter the Deep Sleep Mode – Press any key to wake it up immediately.
- While not connected, keyboard will enter Deep Sleep Mode in 3 minutes – Press any key to wake it up.

CAUTION

- This is not a toy. Please keep away from small children.
- Please keep the unit away from water and heat.

FCC ID STATEMENT

This device complies with part 15 of the FCC Rules. Operation is subject to the following two conditions:

1. This device may not cause harmful interference, and
2. This device must accept any interference received, including interference that may cause undesired operation.

Warning: Changes or modifications not expressly approved by the party responsible for compliance could void the user's authority to operate the equipment.

NOTE: This equipment has been tested and found to comply with the limits for a Class B digital device, pursuant

to Part 15 of the FCC Rules. These limits are designed to provide reasonable protection against harmful interference in a residential installation. This equipment generates uses and can radiate radio frequency energy and, if not installed and used in accordance with the instructions, may cause harmful interference to radio communications. However, there is no guarantee that interference will not occur in a particular installation. If this equipment does cause harmful interference to radio or television reception, which can be determined by turning the equipment off and on, the user is encouraged to try to correct the interference by one or more of the following measures:

- Reorient or relocate the receiving antenna.
- Increase the separation between the equipment and receiver.
- Connect the equipment into an outlet on a circuit different from that to which the receiver is connected.
- Consult the dealer or an experienced radio/ TV technician for help.

RF warning statement:

The device has been evaluated to meet general RF exposure requirement. The device can be used in portable exposure condition without restriction.

WARNING:TO AVOID BATTERY LEAKAGE


1. Be sure to insert the battery correctly, and always follow the toy/game and battery manufacturers' instructions.
2. Always remove a weak or dead battery from the product.
3. Remove the battery if the product is left unused for a long period of time.

- **FCC ID:** 2AJQ7KEYBOARD
- **FCC ID:** 2AJQ7DONGLE



- QUEST USA CORP.
- 495 Flatbush Ave Brooklyn, NY 11225
- @ GOIJOY & WOY are registered trademarks of QUEST USA CORP.
- All other trademarks and trade names are property of their respective owners.
- Designed by GOIJOY & IJOY in New York. All rights reserved QUEST USA CORP.
- Made in China.

Documents / Resources

	iJoy IJ10389-FB Translucent Wireless Keyboard [pdf] User Manual IJ10389-FB Translucent Wireless Keyboard, IJ10389-FB, Translucent Wireless Keyboard, Wireless Keyboard, Keyboard
---	---

References

- [User Manual](#)

This website is an independent publication and is neither affiliated with nor endorsed by any of the trademark owners. The "Bluetooth®" word mark and logos are registered trademarks owned by Bluetooth SIG, Inc. The "Wi-Fi®" word mark and logos are registered trademarks owned by the Wi-Fi Alliance. Any use of these marks on this website does not imply any affiliation with or endorsement.