



iGPSPORT CAD70 DUAL MODULE CADENCE SENSOR User Manual

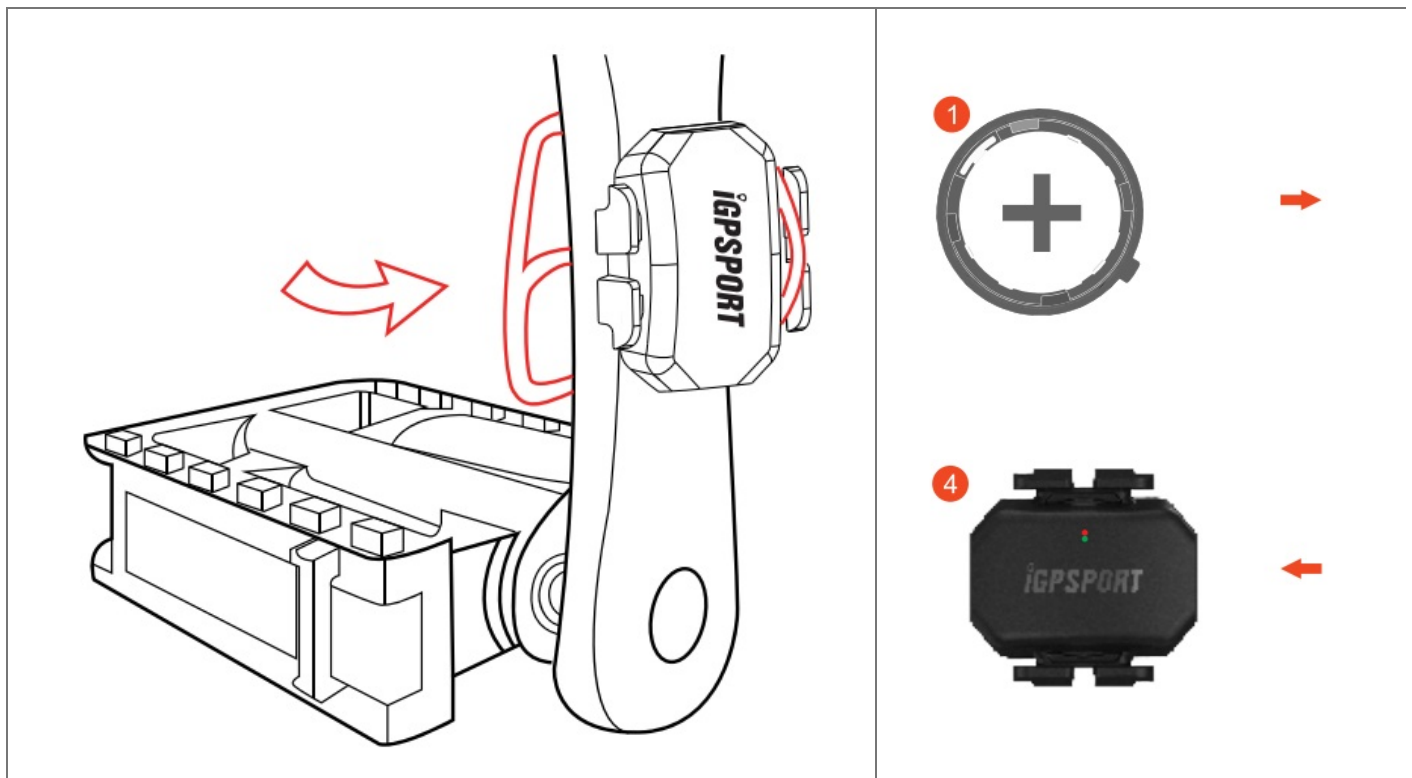
[Home](#) » [iGPSPORT](#) » iGPSPORT CAD70 DUAL MODULE CADENCE SENSOR User Manual 

**iGPSPORT**

DUAL MODULE CADENCE SENSOR
CAD70



QUICK START MANUAL



PACKAGE LIST :

- CAD70 X1
- User Manual X1
- Bandage X3
- CR2025 button battery xi

Contents

- [1 PRODUCT INSTALLATION](#)
- [2 PRODUCT MAINTENANCE:](#)
- [3 DISCLAIMER :](#)
- [4 Documents / Resources](#)
- [5 Related Posts](#)

PRODUCT INSTALLATION :

1. Install on the non-driving side, press the flat side of the cadence to install on the inside of the crank
2. Tighten the strap to bypass the (rank and hook the cadence sensor
3. Rotate the crank to check for gaps, the sensor, and the straps should not touch your shoes or other parts of the bicycle
4. Take 15 minutes for a cycling test to ensure the sensor and strap are fastened and do not cause injury

BATTERY INSTALLATION :

Install the battery, knock the knob, and the traffic light flashes alternately in the middle of the front of the product. This product uses a large capacity of a CR2025 button battery, sustainable working is 300 hours (depending on usage).

PRODUCT MAINTENANCE:

This product is a high-tech electronic device, follow the instructions below to ensure its performance stabilizes and extends the service life



1. Use a soft brush to regularly scrub and dean the dirt and dust on the surface of the product
2. When replacing the battery, please make sure that the inside of the product is dry and free of water stains
3. Do not immerse in the water for a long time
4. Clean regularly to ensure there are no knife marks on the strap

USER MANUAL :

See the official website for details

Website: www.igpsport.com



CONTACT US:

	www.igpsport.com
	Wuhan Qiwu Technology Co., Ltd
	Hongshan District, Wuhan City, Hubei Province, China.
	(86)27-87835568
	service@igpsport.com

DISCLAIMER :

The information contained in this manual is for reference only. If the content or procedure is different from the function of the device. Qi Wu Technology Co., Ltd will not notify you otherwise.

Documents / Resources

	iGPSport CAD70 DUAL MODULE CADENCE SENSOR [pdf] User Manual DUAL MODULE CADENCE SENSOR, CAD70, CADENCE SENSOR
	iGPSport CAD70 Dual Module Cadence Sensor [pdf] User Manual CAD70, 2AU4M-CAD70, 2AU4MCAD70, CAD70 Dual Module Cadence Sensor, CAD70, Dual M odule Cadence Sensor, Module Cadence Sensor, Cadence Sensor, Sensor