

Contents [[hide](#)]

- [1 igloo SK4 Lockbox](#)
- [2 Specifications](#)
- [3 What's Included](#)
- [4 What You Need](#)
- [5 Installation Steps](#)
- [6 Features](#)
- [7 Audio and LED Indicators](#)
- [8 Troubleshooting](#)
- [9 FAQ](#)
- [10 Documents / Resources](#)
 - [10.1 References](#)



igloo SK4 Lockbox



Specifications

- IP66 waterproofing
- IK-07 level impact protection
- Supports both battery and DC power
- Backlit physical keypad
- algoPIN technology for remote access

What's Included

- Lockbox
- Mounting Screws
- Screw Anchors
- Screw O-Rings
- AAA Batteries
- Battery Cover
- Storage Guard
- Plugs

igloo-SK4-Lockbox-IMAGE-1

What You Need



Cordless Drill



Philips Screw Driver



Drill Bit

2mm (5/64") or 6mm
(15/64") diameter

Hello! Start here

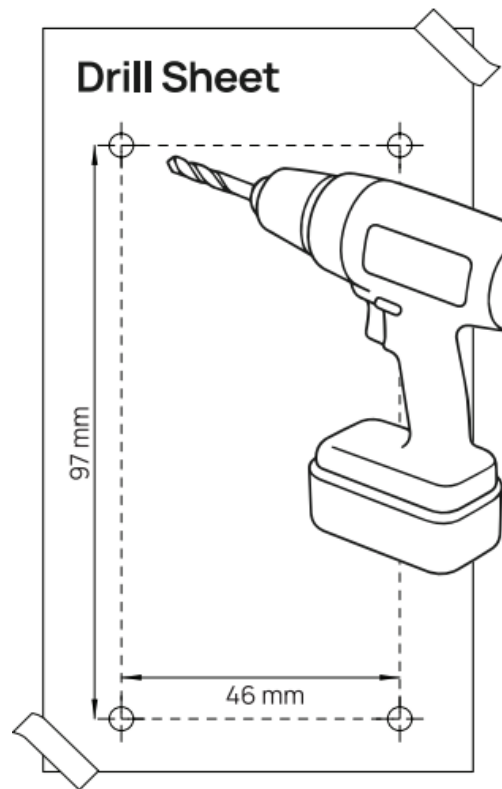
Installation Steps

Mounting with Screws

- Open the lockbox lid and take out all of the items inside.
- Find a place to install your Lockbox. Installing it closer to your locks and entryway will enable easier operation.

Step 1: Mark the Mounting Holes

Tear off & tape the drill sheet where you would like to install the lockbox and mark the locations of the 4 x pilot holes.



Step 2: Drill Pilot Holes

IMPORTANT

To ensure secure installation, use the recommended pilot hole and anchor bolt guidelines below.

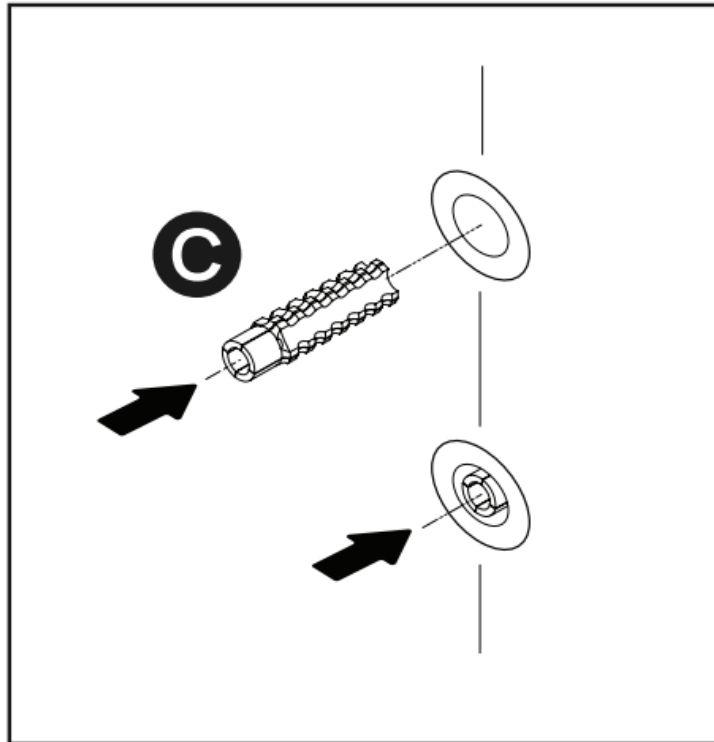
Drill the pilot hole size for the mounting surface as specified. Note if Anchor Bolts are required.

Mounting Surface	Pilot Hole Diameter	Anchor Bolt?
Wood	2mm / 5/64"	X
Sheetmetal	2mm / 5/64"	X
Brick	6 mm / 15/64"	F
Concrete	6 mm / 15/64"	F
Masonry	6 mm / 15/64"	F
Drywall	6 mm / 15/64"	F

The pilot holes should be drilled to a depth of 50mm / 2".

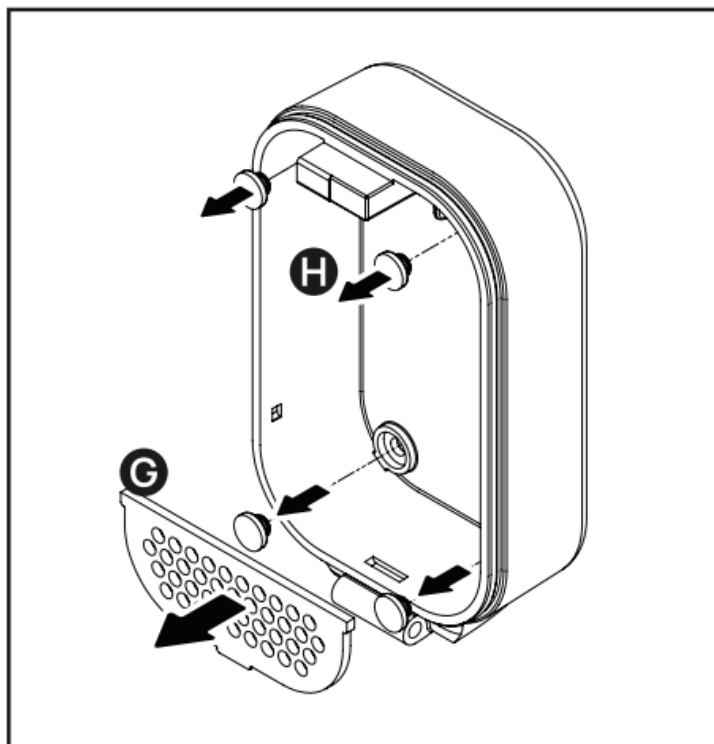
Step 3: Insert Anchors (if required)

Insert the 4 x screw anchors (C) for Brick, Concrete, Masonry or Drywall if required. The anchors should tightly fit into the pilot holes to ensure a secure hold.



Step 4: Access Mounting Holes

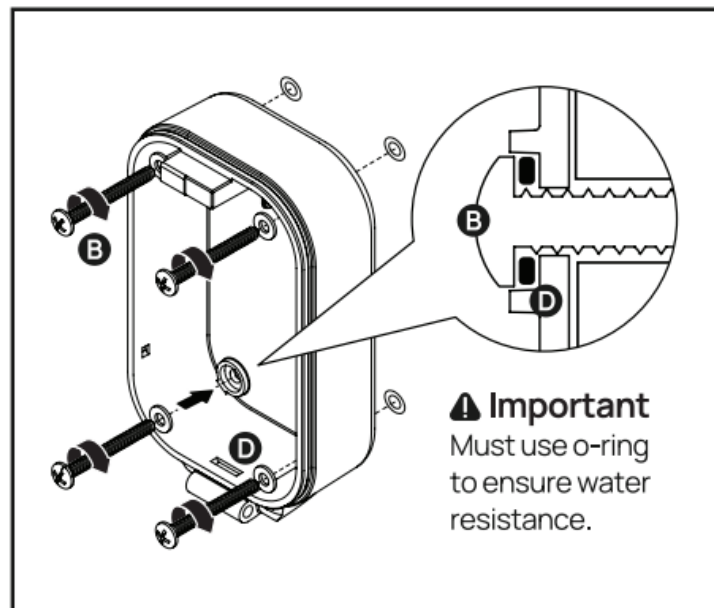
Remove the 4 plugs (H) & storage guard (G) to access the mounting holes.



Step 5: Secure with Screws

Align the lockbox to the prepared holes and insert the screws (B) with a screwdriver in a clockwise twisting motion. Use the rubber O-rings (D) as shown if exposed to wet

conditions.



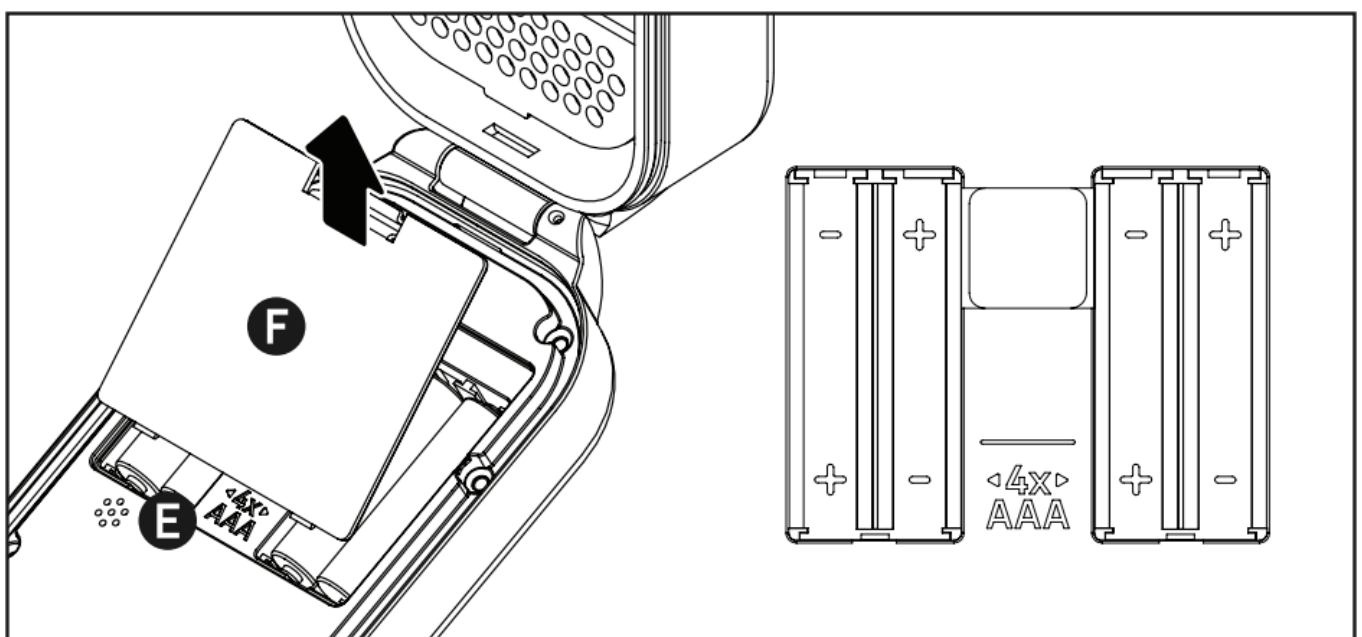
Step 6: Replace Storage Guard

Replace the storage guard (G) and snap it into place.

igloo-SK4-Lockbox-IMAGE-8

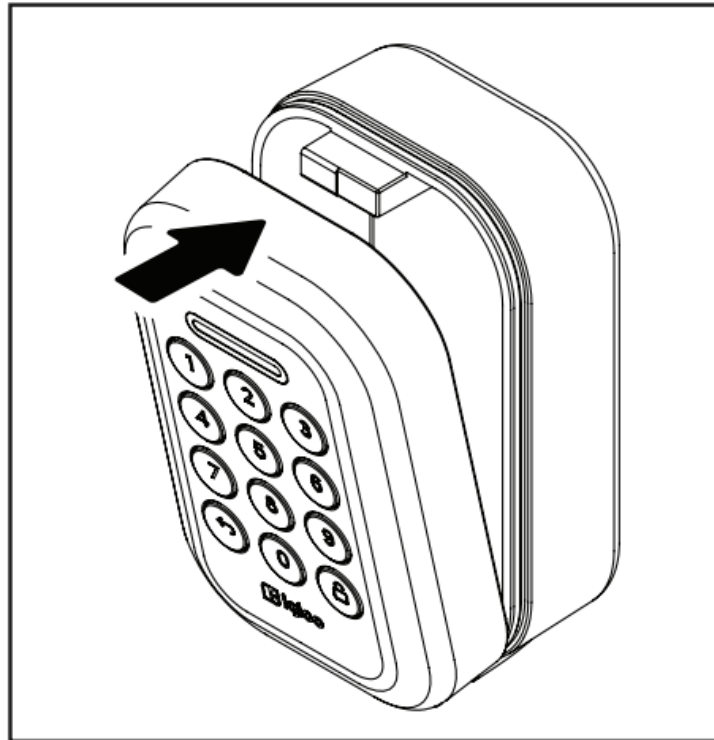
Step 7: Insert Batteries

- Open the battery cover (F) and insert the 4 x AAA (E) batteries as indicated. Close the battery cover.
- For temps below -20C (-4F) use LiMnO₂ AAA batteries for optimal battery life.



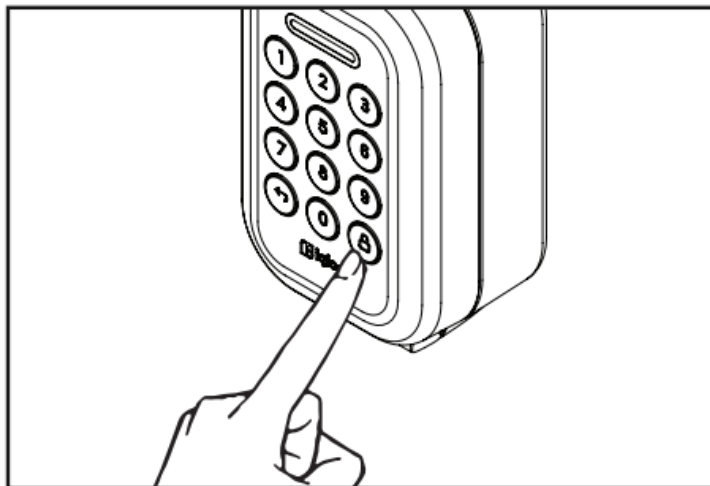
Step 8: Close the Lid

Close the lid firmly and the lockbox should automatically lock after 3 seconds with a green Status LED.



Step 9: Test Unlocking

Unlock the lockbox with the default pin by entering the code 1234567890.



Congratulations!

You have installed your lock. Download the igloo home application from the App Store or Google Play Store to complete setup & configure your smart lock.

Features

- **Large Storage Space**

Ample interior storage to protect more than just keys such as cards, ID badges, fobs, remotes, asset tags, small tools & more.

- **Rugged Outdoor Security**

Built to protect with IP66 waterproofing, IK-07 level impact protection, a secure locking mechanism & tamper alarms.

- **View Device Activity Logs**

View all access activity by credential used, and view the battery life in the IGH mobile app.

- **Easy Installation**

Supports both battery and DC power for flexibility in low- or high-traffic areas. The compact design makes it easy to retrofit or install in new builds without complicated wiring.

- **Backlit Physical Keypad**

Large, easy to press, tactile buttons built for reliable PIN code entry and readability in direct sunlight or pitch black conditions.

Access from Anywhere a igloo PIN technology helps you generate a PIN code from anywhere and share it with anyone for instant access.

- **Apple Watch Convenience**

Use your Apple Watch to unlock via voice, a finger tap or gestures. Works with watch OS 7 and up.

- **Auto Unlock**

Your lockbox automatically unlocks when you return home. Never fumble with keys again.

- **Relock Reminder**

Intuitive audio and visual alerts will prompt you to recharge the batteries when it runs low.

- **Security Lockout**

Disable the keypad after several incorrect access attempts to ensure your property is always secure.

- **Decoy PIN Code**

Heighten security and throw off onlookers by entering random digits before your actual PIN code.

- **Obstruction Alarm**

The lock will sound an alarm if the bolt tongue cannot be extended or retracted fully to

alert the user of any obstructions.

- **Low Battery Alert**

Intuitive audio and visual alerts will prompt you to recharge the batteries when it runs low.

- **Auto Lock**

Automatically locks once the lockbox is shut to give you greater peace of mind.

- **Tamper Alarm**

The lock will sound an alarm if the lid is opened without unlocking to alert and deter potential tampering attempts.

- **Emergency Jumpstart**

Easily jumpstart the reader with a Type-C cable connected to a power bank or compatible phone if battery is drained.

- **Volume Control**

Adjust the lock volume according to your preference. Select from levels 0 (mute) to 5 (loudest).

Audio and LED Indicators

Actions	Indications
Bluetooth® Connection	Status LED flashes Blue
Successfully Unlocked	Status LED blinks Green, 4 fast ascending tones.
Successfully Locked	Status LED blinks Green, single long beep.
Incorrect Credential	Status LED blinks RED, 4 short beeps.
Obstruction Alarm	Status LED blinks RED, 4 short beeps, repeated 6 times.
Reached max. no. of digits (16)	Status LED blinks RED, 4 short beeps.
Break In Alert Activated	Status LED blinks RED, low-high siren for 30 seconds.
Security Lockout Activated	Status LED blinks RED, low-high siren for 30 /60 / 90 seconds.

Security Lockout Deactivated	2 long beeps.
Low Battery Alert	Status LED breathes RED when woken up, 3 fast descending tones.
Relock Reminder Alert	2 short beeps, repeated 5 times.
Hard Reset Mode	Status LED blinks BLUE, 3 short beeps.
Hard Reset / Unpair	Status LED blinks RED, GREEN, BLUE, 4 slow descending tones.
Power Start Up	2 slow beeps, 2 fast beeps.

Troubleshooting

- **I have placed the batteries inside but the device won't turn on.**

Check that the batteries have been inserted in the correct orientation. There should be two long, and two short beeps when the batteries are installed correctly. If it still doesn't work, try a new set of AAA 1.5V batteries.

- **I am unable to see the device when trying to pair**

Ensure that the device is receiving power by pressing any button to wake it up. Waking it up will allow it to be seen in the app when pairing.

- **The batteries have fully drained. How can I replace them?**

Connect a 5V DC power source via Type – C USB cable. The device will wake up, you can now enter a permanent pin code such as the master pin or use the app to unlock. Once unlocked, ensure that a fresh set of batteries have been inserted before closing.

FAQ


What should I do if the lockbox does not automatically lock after closing the lid?

Ensure that the batteries are properly inserted and have sufficient charge. Try replacing the batteries if needed. If the issue persists, contact customer support for assistance.

Can I use rechargeable batteries in the lockbox?

It is recommended to use LiMnO₂ AAA batteries for optimal performance in temperatures below -20C (-4F). Rechargeable batteries may not provide the same level of performance.

Documents / Resources

	igloo SK4 Lockbox [pdf] Installation Guide 2AYD7-SK4, SK4 Lockbox, SK4, Lockbox
-----------------------------------------------------------------------------------	----------------------------------------------------------------------------------------------------

References

- [User Manual](#)

2AYD7-SK4, Igloo, Lockbox, SK4, SK4

Igloo Lockbox

Leave a comment

Your email address will not be published. Required fields are marked *

Comment *

Name

Email

Website

☐ Save my name, email, and website in this browser for the next time I comment.

Post Comment

Search:

e.g. whirlpool wrf535swhz

Search

[Manuals+](#) | [Upload](#) | [Deep Search](#) | [About Us](#) | [Privacy Policy](#) | [@manuals.plus](#) | [YouTube](#) | [LinkedIn](#) | [FaceBook](#)

This website is an independent publication and is neither affiliated with nor endorsed by any of the trademark owners. The "Bluetooth®" word mark and logos are registered trademarks owned by Bluetooth SIG, Inc. The "Wi-Fi®" word mark and logos are registered trademarks owned by the Wi-Fi Alliance. Any use of these marks on this website does not imply any affiliation with or endorsement.