

igloo Deadbolt Go DBX 1 Keyless Smart Lock



igloo Deadbolt Go DBX 1 Keyless Smart Lock User Guide

[Home](#) » [Igloo](#) » igloo Deadbolt Go DBX 1 Keyless Smart Lock User Guide 

Contents

- [1 igloo Deadbolt Go DBX 1 Keyless Smart Lock](#)
- [2 Product Usage Instructions](#)
- [3 What's Included](#)
- [4 Retrofit Installation Steps](#)
- [5 App Onboarding](#)
- [6 New Installation Steps](#)
- [7 Features](#)
- [8 Audio and LED Indications](#)
- [9 FCC Compliance](#)
- [10 FAQ](#)
- [11 Documents / Resources](#)
 - [11.1 References](#)



igloo Deadbolt Go DBX 1 Keyless Smart Lock



Specifications:

- Keypad body
- Thumbturn body
- Mounting bracket
- 4 Physical owner keys
- Deadbolt latch assembly
- Strike plate
- Dust box cover
- 2 Large Screws
- 3 Small Machine Screws
- 4 Wood Door Screws
- 4 Metal Door Screws

Product Usage Instructions

Retrofit Installation Steps:

1. **Remove Existing Deadbolt:** Remove the existing deadbolt from your door.
2. **Install Deadbolt Latch:** Install deadbolt latch into the door ensuring alignment as shown, with UP towards top.
3. **Assemble Keypad Body through latch:** Assemble the keypad body. The tailpiece should be in the horizontal orientation.
4. **Assemble the Mounting Plate and secure:** Insert cable through hole in the mounting plate. Fasten it to the keypad body with 2 x H screws.
5. **Connect cable to Thumbturn Body:** Remove battery cover. Connect cable to thumb turn body.
6. **Fasten Thumbturn Body:** Fasten the thumbturn body to the mounting plate with the 3 x I screws and fold cable into empty space inside body.
7. **Check thumb turn movement:** Rotating the thumb turn should lock & unlock the deadbolt with ease.

Adjust/Install the strike & dust box if needed.

8. **Insert batteries:** Insert 4 x AA batteries (not included) and replace the battery cover.

9. **Auto-Calibrate Lock Handing:** Long press the lock button and your lock will automatically calibrate to the left or right side of the door.

New Installation Steps:

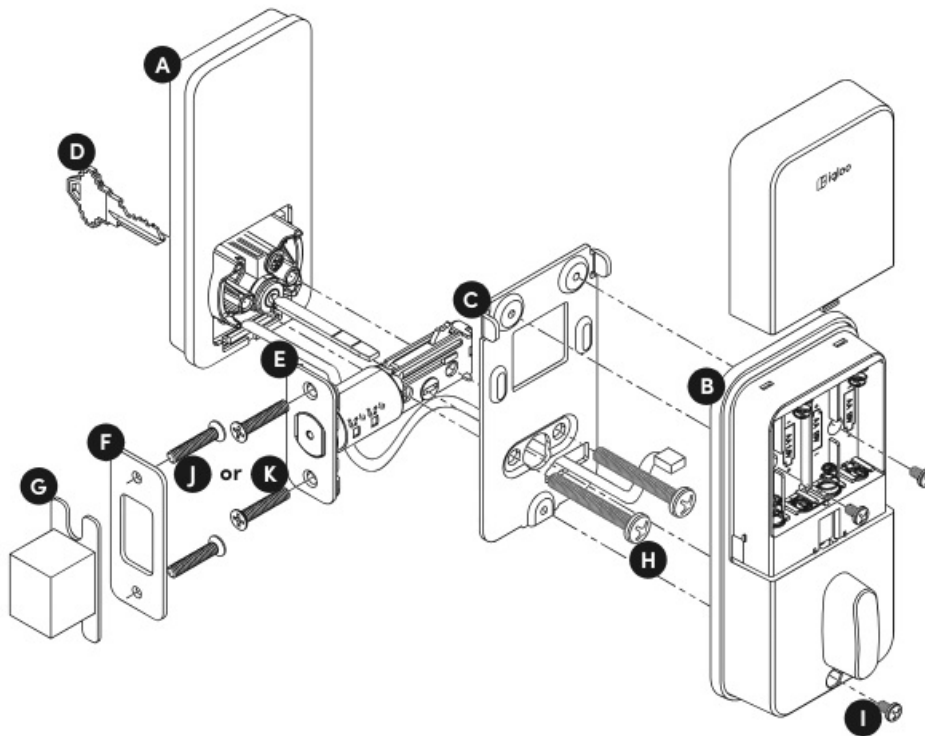
1. **Remove Existing Deadbolt:** Remove existing deadbolt from your door.

2. **Set Latch backset and secure in door:** Install deadbolt latch into the door ensuring alignment as shown, with UP towards top.

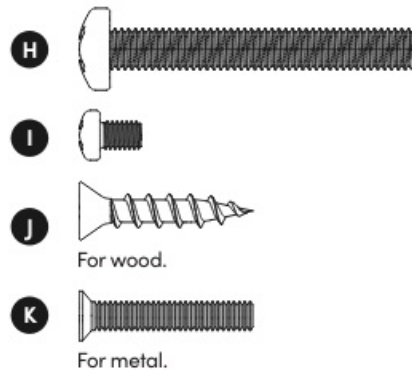
Hi there!

- We're so glad you've decided to join us on this journey to create a world without keys. You're officially an igloo home!
- In this guide, you'll find everything you need to get started with your lock. We hope that we've been as comprehensive and informative as possible. Afterall, we're here to make life easier for you (at least when it comes to your home's access).
- If you do not find what you're looking for, we're working on updating it. Or... you could reach out to us at support@igloohome.co because we love interacting with you! For the latest updates, follow us on these channels.

What's Included



Screw Sizes

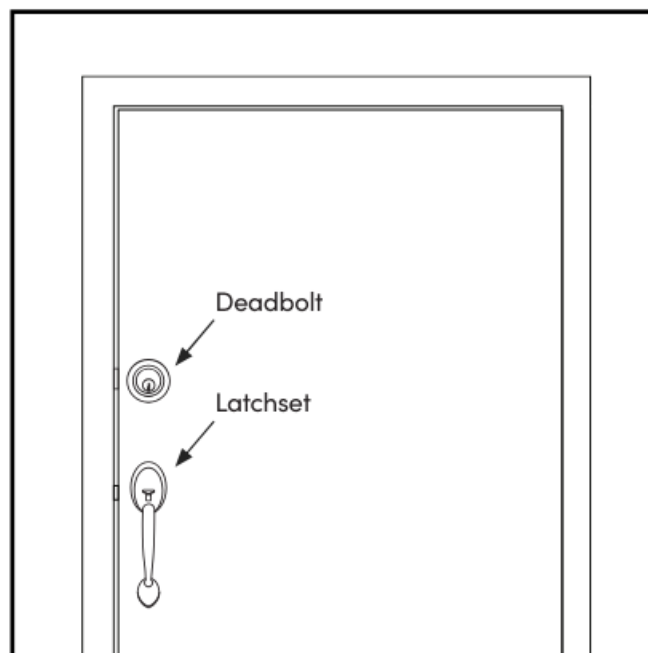


1. 1 x Keypad body
2. 1 x Thumbturn body
3. 1 x Mounting bracket
4. 4 x Physical owner keys
5. 1 x Deadbolt latch assembly 1 x Strike plate
6. 1 x Dust box cover
7. 2 x Large Screws
8. 3 x Small Machine Screws 4 x Wood Door Screws
9. 4 x Metal Door Screws

Hello! Start here

Is this Retrofit?

If so continue below



Check operation of existing Deadbolt: Is there a pre-load on the Deadbolt?

- This is characterized by the requirement to lean against the door in order to easily turn the thumbturn while extending or retracting the Deadbolt.

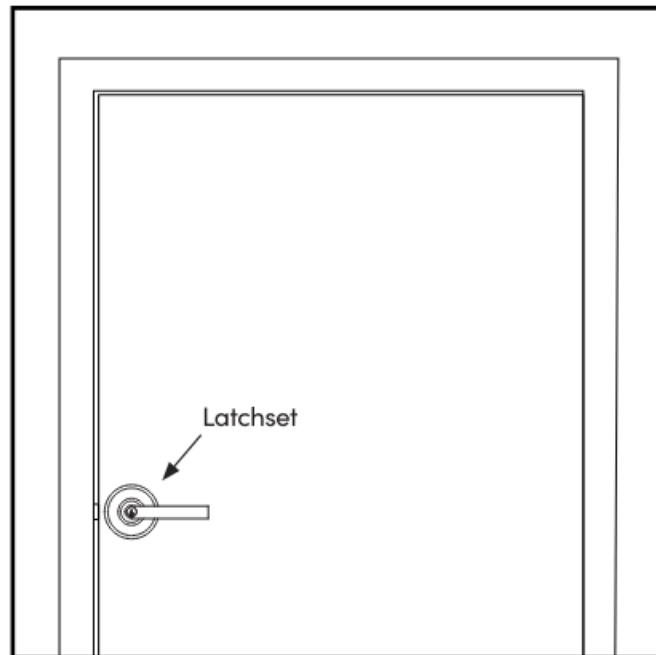
- Often, this is caused by the presence of weather seals or by incorrect positioning of either the latchset or Deadbolt strikes.
- A motorized Deadbolt cannot overcome a high pre-load, so it is important that the latchset bolt take this load. Doing so will ensure smooth and reliable travel of the motorized Deadbolt.

Does the Deadbolt line up with and fully extend into the strike pocket?

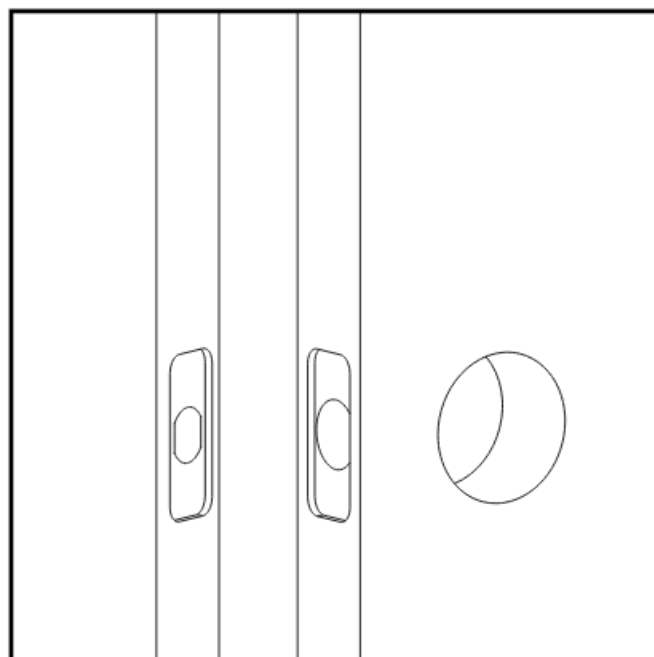
If not, it might be necessary to adjust the prep and location of the strike plate.

Is this new installation?

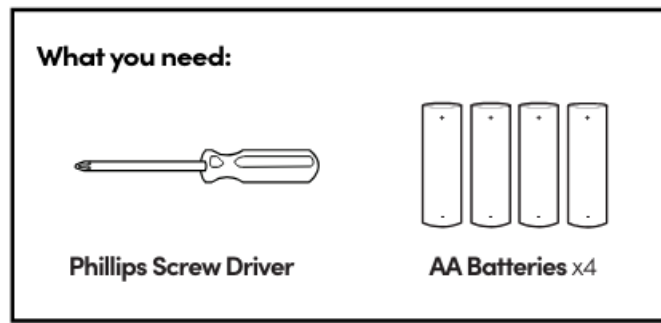
Go to section New Installation Steps



You will need to prep the door. The final prep look like this.



Retrofit Installation Steps



1. Remove Existing Deadbolt

Remove existing deadbolt from your door.

2. Install Deadbolt Latch

Install deadbolt latch into the door ensuring alignment as shown, with "UP" towards top.

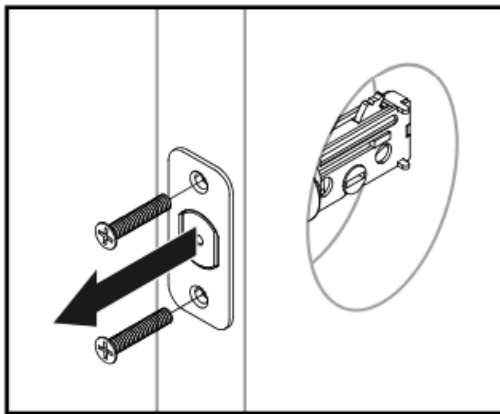
3. Set Latch backset and secure in door

If required, increase the length of the deadbolt by twisting it before inserting into door.

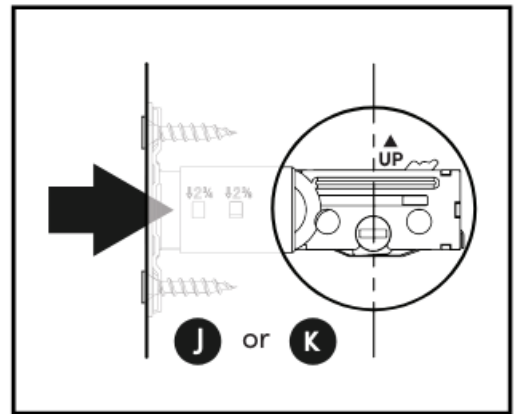
4. Assemble Keypad Body through latch

Assemble the keypad body. The tailpiece should be in the horizontal orientation.

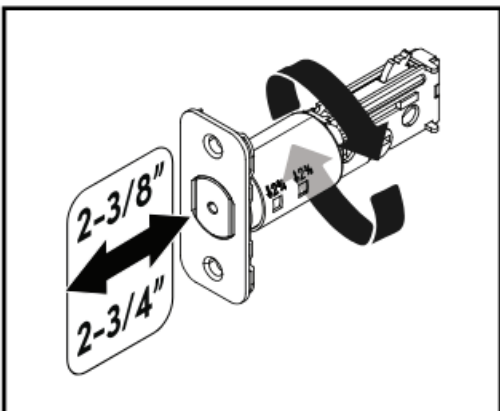
1 Remove Existing Deadbolt



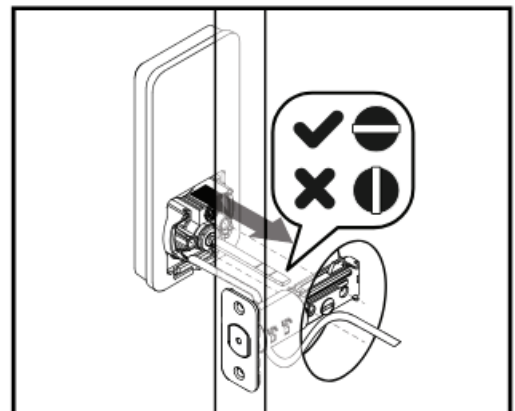
2 Install Deadbolt Latch



3 Set Latch backset and secure in door



4 Assemble Keypad Body through latch



5. Assemble Mounting Plate and secure

Insert cable through hole in the mounting plate. Fasten it to the keypad body with 2 x "H" screws.

6. Connect cable to Thumbturn Body

Remove battery cover. Connect cable to thumbturn body.

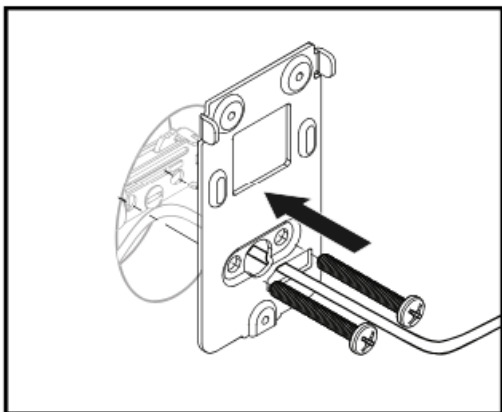
7. Fasten Thumbturn Body

Fasten thumbturn body to mounting plate with the 3 x "I" screws and fold cable into empty space inside body.

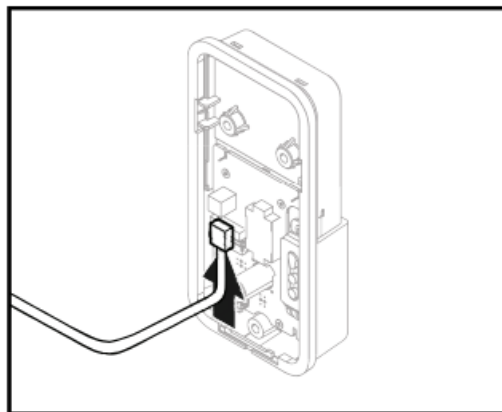
8. Check thumbturn movement

Rotating the thumbturn should lock & unlock the deadbolt with ease. Adjust/Install the strike & dust box if needed.

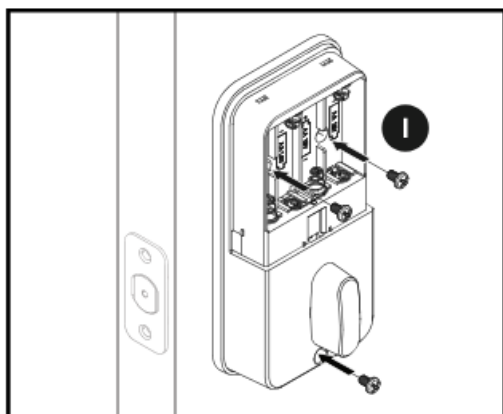
5 Assemble Mounting Plate and secure



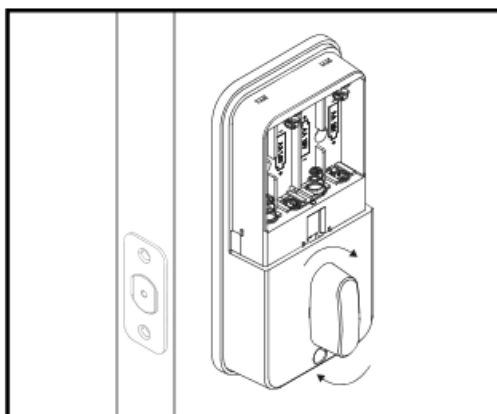
6 Connect cable to Thumbturn Body



7 Fasten Thumbturn Body



8 Check thumbturn movement

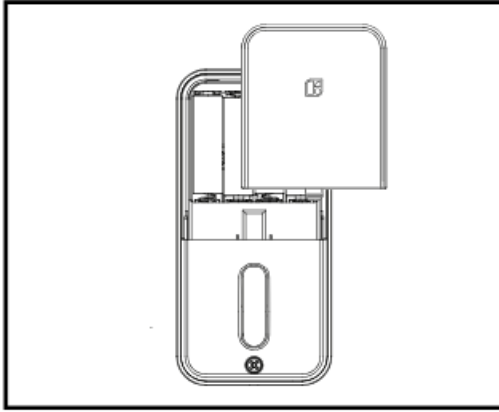
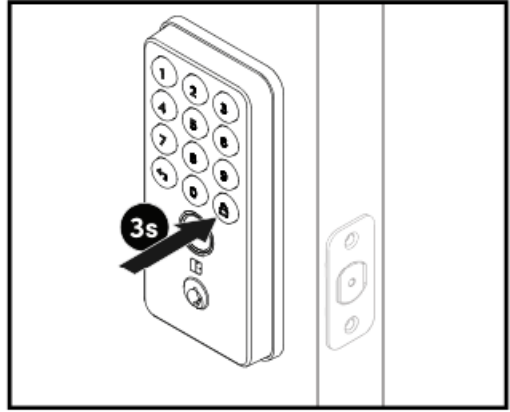


9. Insert batteries

Insert 4 x AA batteries (not included) and replace the battery cover.

10. Auto-Calibrate Lock Handing

Long press the lock button and your lock will automatically calibrate to the left or right side of the door.

9**Insert batteries****10****Auto-Calibrate Lock Handling**

Installation Note: Weather condition changes such as temperature and humidity, can affect an installation over time. In particular, wood doors may swell or contract, which might cause changes to the lock performance over the opening's life-span. Please re-check the installation periodically, with the door open and door closed, to check for a bind or misalignment of the deadbolt and strike.

Congratulations!

You have installed your lock. Download the igloohome application from the App Store or Google Play Store to complete setup & configure your smart lock.

App Onboarding**Download the igloohome app**

The mobile app is available for free on the App Store and Google Play Store!

Click link below to download:

- App Store
- Google Play Store

Register for an igloohome account

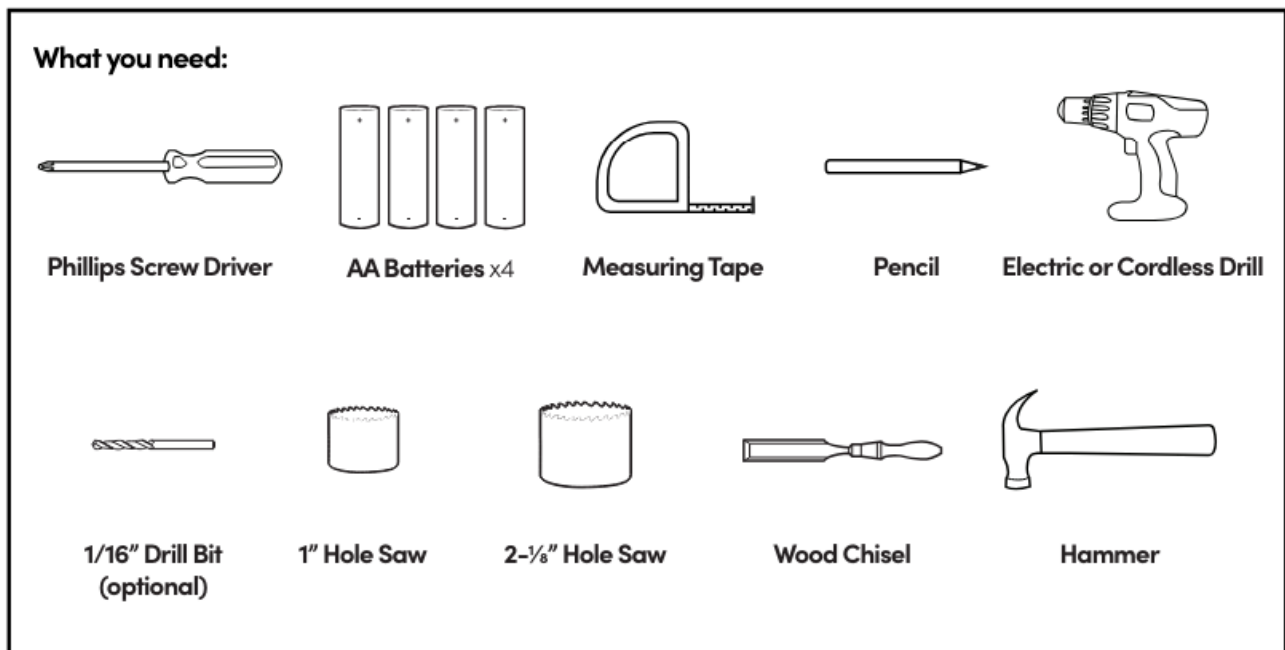
1. Launch the igloohome app and tap [Create new account]
2. Fill in the fields shown on the screen.
3. Accept the terms of services and privacy policy.
4. Tap [Create account].
5. Enter the 6-digit OTP sent to your email address.
6. Tap [Verify].
7. You now have a verified igloohome account!

If you have forgotten your password,

1. Visit the login page and select [Forgot password?]
2. Enter your registered email address.
3. Press [Submit].

You will receive an email with a link and instructions on how to reset your password.

New Installation Steps



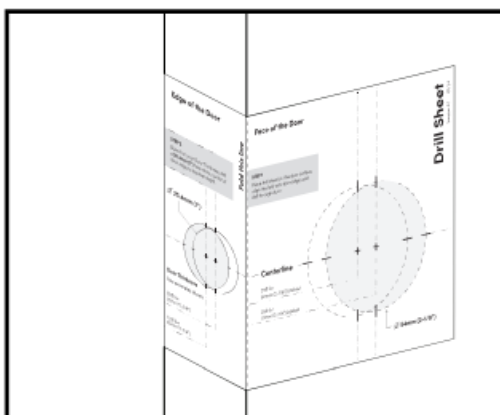
1. Position Drill Sheet

Fold the Drill Sheet and line up along the door edge with the text right-side up, noting that the sheet will be affixed to either the inside or outside door face, depending on your door handling. Typically, the deadbolt centerline will be installed at a distance of 5-1/2"es above the centerline of the latchset. Tape the Drill Sheet into place.

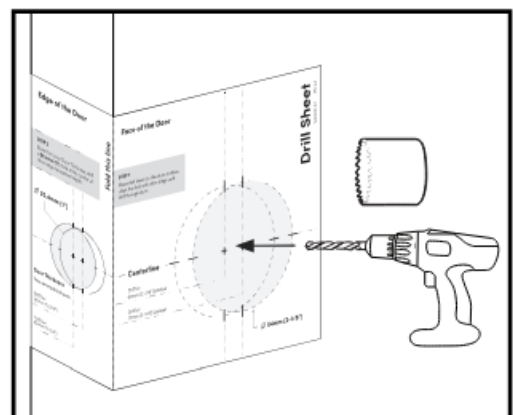
2. Install Deadbolt Latch

Selecting the backset that is preferable to you (we recommend using a backset that matches the knob or lever backset), use an electric drill with 2-1/8" hole saw to drill completely through the door. Be sure to hold the drill level and straight against the door face when drilling.

1 Position Drill Sheet



2 Install Deadbolt Latch



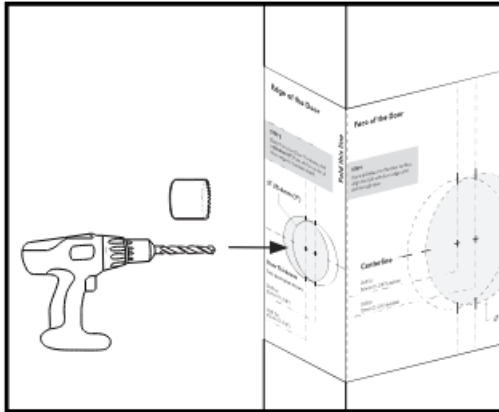
3. Prep Door Edge for Bolt

Now, select the 1" circle centerline shown on the sheet which is located at the center of the door edge. Note that for certain door thicknesses, it might be necessary to reposition the Drill Sheet. Use a 1/16" diameter drill bit to drill a pilot hole from the door edge until it breaks through to the door face thru-hole. Be sure to hold the drill level and straight against the door edge when drilling. Enlarge this hole using a 1" hole saw.

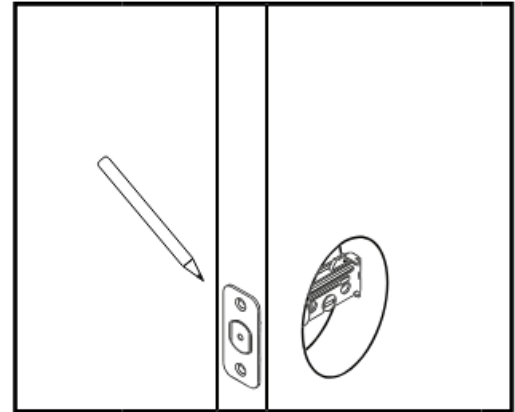
4. Mark Faceplate on Door Edge

Insert the latchbolt assembly into the 1" hole, and use pencil to trace the outline of the deadbolt latch faceplate onto the door edge.

3 Prep Door Edge for Bolt



4 Mark Faceplate on Door Edge



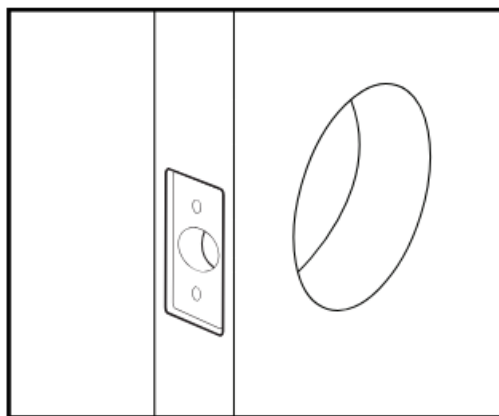
5. Prep Door Edge for Faceplate

Rout the faceplate clearance to a depth of 1/8".

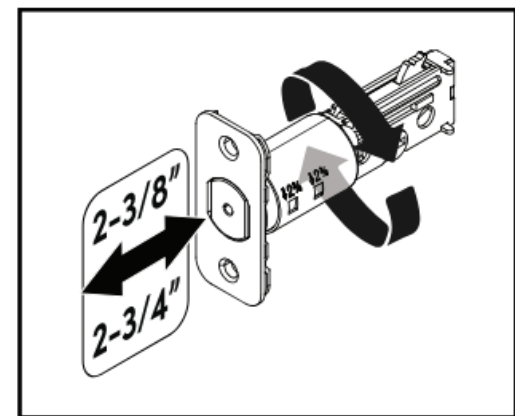
6. Set Latch Backset and Secure 6 in Door

If required, increase the length of the deadbolt by twisting it before inserting into door. Optional – mark pilot hole locations for the two screws and drill 1/16" holes approximately 1" deep.

5 Prep Door Edge for Faceplate



6 Set Latch Backset and Secure in Door

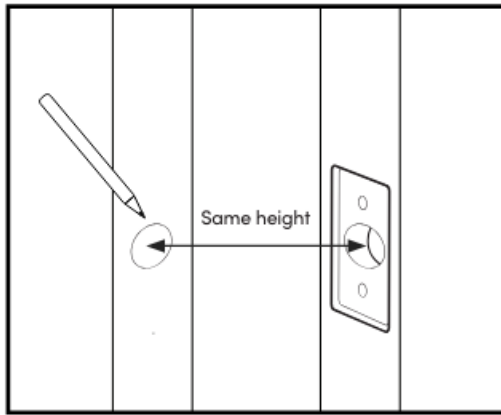
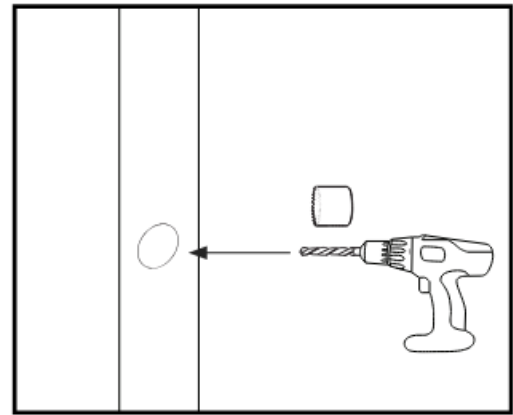


7. Mark Bolt Position on Door Frame

First use a pencil to transfer the vertical height of the bolt position onto the frame. Next, mark the distance from where the door stops on the frame to one half of the door thickness. The intersection of these two lines marks the center of the bolt. Conversely, apply pencil to the bolt end, and with the door closed against the frame, rotate the cam with a screwdriver to mark the exact location of the bolt.

8. Prep Door Frame for Bolt

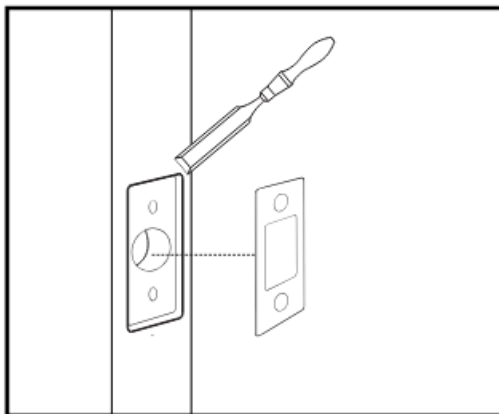
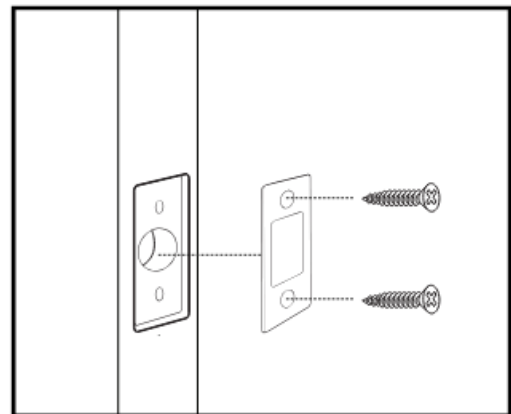
At the marked bolt center, drill a hole to a depth of 1" using the 1" hole saw. Be sure to hold the drill level and straight against the frame when drilling. Close the door and rotate the cam with a screwdriver to verify that the bolt extends fully into the strike hole. The bolt should operate smoothly, with low resistance.

7**Mark Bolt Position on Door Frame****8****Prep Door Frame for Bolt****9. Prep Door Frame for Strikeplate**

Next, position the strikeplate to trace out the strikeplate relief area. Use a router or chisel and hammer to route the marked rectangular area to a depth of 1/8".

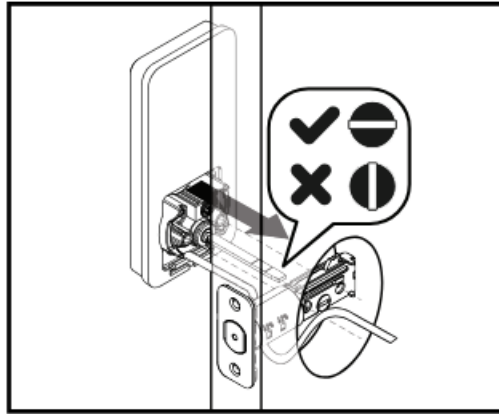
10. Fasten strikeplate and check 10 for pre-load

Attach the Strike Plate using (optional pilot hole drill) quantity (2) J Screws. Gently tighten the Screws with a Phillips Head Screwdriver. Then, close the door and use a flat blade screwdriver to check for full bolt extension and retraction. Operation should still be smooth. Deadbolt should not be taking any pre-load from weather seals or door warpage. If it is, look to adjust the latchset strike so that latchset takes this pre-load instead. Additionally, it might be necessary to adjust the location of the Deadbolt Strike Plate. Recheck the deadbolt operation with the screwdriver; if smooth with low resistance, continue to the next step.

9**Prep Door Frame for Strikeplate****10****Fasten strikeplate and check for pre-load****11. Assemble Keypad Body through latch**

Assemble the keypad body. The tailpiece should be in the horizontal orientation.

11 Assemble Keypad Body through latch



Features

PIN / Bluetooth Unlock

- **Biometric One-Touch**

Fingerprint Access Register up to (20) fingerprints for low-friction, keyless access to your home.

- **Remotely Generated Pin Code Access**

Create and share access from anywhere in the world with our patented algoPIN™ technology.

- **Custom Pin Code Access**

Create and share custom 4 to 6 digit PIN codes via bluetooth, whose use can be set for one-time, duration, scheduled, or permanent access.

- **Bluetooth Owner and Shared E-Keys**

Using Bluetooth technology, lock owner can use a mobile phone to gain access and create duration E-Keys to allow guest access.

- **Apple Watch Access**

The igloohome mobile app can generate and share Bluetooth keys (based on duration with guests to unlock the Deadbolt Go.

Lock

- **Auto Unlock**

Selectable feature which enables your mobile phone to automatically unlock your deadbolt upon approach to your home, using Bluetooth and Geofencing technology. No need to even remove your phone from your pocket!

- **Auto Lock**

This selectable feature allows you to set your lock for automatic relock based on a time delay after unlock, to any value between 5 and 180 seconds

Battery

- **Emergency Jumpstart**

If your lock's batteries are depleted, you can use your phone or powerbank with a Type C cable to power the lock for access.

- **Battery Powered On-Board Time Clock**

An included and replaceable CR2032 coin battery will power the on-board clock for a minimum of 5 years.

PIN / Bluetooth Unlock



**Biometric One-Touch
Fingerprint Access**



Bluetooth Owner and Shared E-Keys



Remotely Generated Pin Code Access



Apple Watch Access



Custom Pin Code Access

Lock



Auto Unlock



Auto Lock

Battery



Emergency Jumpstart



Battery Powered On-Board Time Clock

Security / Alarms

- **Manual Relock Options**

If you would rather lock your deadbolt manually, you can choose any of the following methods: 1-second press of the Unlock button, a presentation of an unregistered fingerprint, Bluetooth owner and E-Key credentials, Apple Watch / Siri Shortcuts via Bluetooth, or the physical rotation of the thumbturn or key.

- **Decoy PIN Code**

Heighten security and throw off onlookers by entering random digits before your actual PIN code.

- **Tamper Alarm**

The lock will sound an alarm if it is being pried from the door to alert and deter potential tampering efforts.

- **View Lock Activity Logs**

View all lock access activity by credential used, and view the current battery life remaining in our IGH mobile app.

- **Security Lockout**

Selectable feature which disables the keypad after several incorrect access attempts to ensure your property is always secure.

- **Physical Key Backup**

You can always utilize the included (4) physical keys to access your home.

Security / Alarms



Manual Relock Options



View Lock Activity Logs



Decoy PIN Code



Security Lockout



Tamper Alarm

Others



Volume Control



Physical Key Backup



Integrations with 3rd Party
Mobile Applications



Peripherals (Not included)

Others

- **Volume Control**

Adjust the lock volume according to your preference. Select from levels 0 (mute) to 5 (loudest).

- **Integrations with 3rd Party**

Mobile Applications Please see our [iglooconnect Marketplace](#) to choose from dozens of integrated services to maximize your deadbolt's capabilities.

- **Peripherals (Not included)**

Connect your lock to Wi-Fi and Alexa via the [igloohome EB-1 Bridge](#). Or, utilize our Bluetooth enabled keypad or keyfob to customize your deadbolt access experience.

Audio and LED Indications

Actions	Indications
Bluetooth Connection	'Unlock' icon flashes Blue
Successfully Unlocked	4 fast ascending tones after unlocked
Successfully Locked	1 long beep after Deadbolt 2S is locked
Incorrect PIN	4 short beeps
Deleted PIN	3 sets of 4 short beeps
Obstruction Alarm	6 sets of 4 short beeps
Keypad Disabled Mode Activated	Very long beep
Keypad Disabled Mode Deactivated	2 short beeps
Keypad Security Lockout Alarm	Low-high siren for 30 /60 / 90 seconds
Keypad Security Lockout Deactivated	2 long beeps
Low Battery Alert	3 fast descending tones when keypad is woken up
Tamper Alarm	Keep long beep
Hard Reset / Unpair	4 slow descending tones

FCC Compliance

This device complies with part 15 of the FCC Rules.

Operation is subject to the following two conditions:

1. this device may not cause harmful interference, and
2. this device must accept any interference received, including interference that may cause undesired operation.

NOTE: This equipment has been tested and found to comply with the limits for a Class B digital device, pursuant to Part 15 of the FCC Rules.

These limits are designed to provide reasonable protection against harmful interference in a residential installation. This equipment generates, uses and can radiate radio frequency energy and, if not installed and used in accordance with the instructions, may cause harmful interference to radio communications. However, there is no guarantee that interference will not occur in a particular installation.

If this equipment does cause harmful interference to radio or television reception, which can be determined by turning the equipment off and on, the user is encouraged to try to correct the interference by one or more of the following measures:

- Reorient or relocate the receiving antenna.
- Increase the separation between the equipment and receiver.
- Connect the equipment into an outlet on a circuit different from that to which the receiver is connected.
- Consult the dealer or an experienced radio/TV technician for help.

NOTE: The Grantee is not responsible for any changes or modifications not expressly approved by the party responsible for compliance. such modifications could void the user's authority to operate the equipment.

The device has been evaluated to meet general RF exposure requirements. This equipment complies with FCC's RF radiation exposure limits set forth for an uncontrolled environment. This device and its antenna(s) must not be co-located or in conjunction with any other antenna or transmitter.

FCC RF exposure statement:

The equipment complies with FCC radiation exposure limits set forth for an uncontrolled environment. This equipment should be installed and operated with minimum distance between 20cm the radiator your body.

IC Caution

This device complies with Industry Canada's licence-exempt RSSs.

Operation is subject to the following two conditions:

1. This device may not cause interference.
2. This device must accept any interference, including interference that may cause undesired operation of the device.

This equipment complies with IC radiation exposure limits set forth for an uncontrolled environment. This equipment should be installed and operated with minimum distance 20cm between the radiator & your body.

FAQ

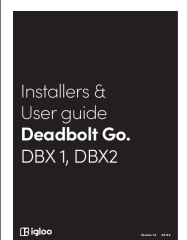
Is this product suitable for both wood and metal doors?

Yes, the product comes with screws for both wood and metal doors to ensure proper installation.

What should I do if the lock performance changes over time?

If you notice changes in lock performance due to weather conditions or door adjustments, please re-check the installation periodically to ensure proper functioning.

Documents / Resources

	<p>igloo Deadbolt Go DBX 1 Keyless Smart Lock [pdf] User Guide Deadbolt Go DBX 1, Deadbolt Go DBX 1 Keyless Smart Lock, Keyless Smart Lock, Smart Lock, Lock</p>
---	--

References

-  [Support | igloohome Support & Help Portal](#)
- [User Manual](#)

[Manuals+](#), [Privacy Policy](#)

This website is an independent publication and is neither affiliated with nor endorsed by any of the trademark owners. The "Bluetooth®" word mark and logos are registered trademarks owned by Bluetooth SIG, Inc. The "Wi-Fi®" word mark and logos are registered trademarks owned by the Wi-Fi Alliance. Any use of these marks on this website does not imply any affiliation with or endorsement.