



iGear SPECTRUM Mini Portable Bluetooth Speaker User Manual

[Home](#) » [iGear](#) » iGear SPECTRUM Mini Portable Bluetooth Speaker User Manual 

Contents

- [1 iGear SPECTRUM Mini Portable Bluetooth Speaker](#)
- [2 Product Information](#)
- [3 Technical specification](#)
- [4 Features](#)
- [5 Keys to Operation](#)
- [6 Directions to use](#)
- [7 Troubleshooting](#)
- [8 Warranty](#)
- [9 Documents / Resources](#)
 - [9.1 References](#)



iGear SPECTRUM Mini Portable Bluetooth Speaker



Product Information

The iGear Spectrum mini is a portable Bluetooth speaker that comes with a variety of features. It has Bluetooth version 5.0 and a transmission distance of up to 10 meters. The output power is 15W and it has a playing time of up to 12 hours at 50% volume. The frequency effect is 80Hz-15Khz and it has a 66mm speaker. It also has an input power of DC 5V and a battery type of 1800mAh. Additionally, it has an audio input of a 3.5mm headphone jack (stereo) and supports MP3/WAV/WMA/FLAC music formats. The iGear Spectrum mini is IPX5 Splashproof and features a TWS (True Wireless Stereo) system, FM radio, 180-degree dazzle light, and high-fidelity speakers.

Technical specification

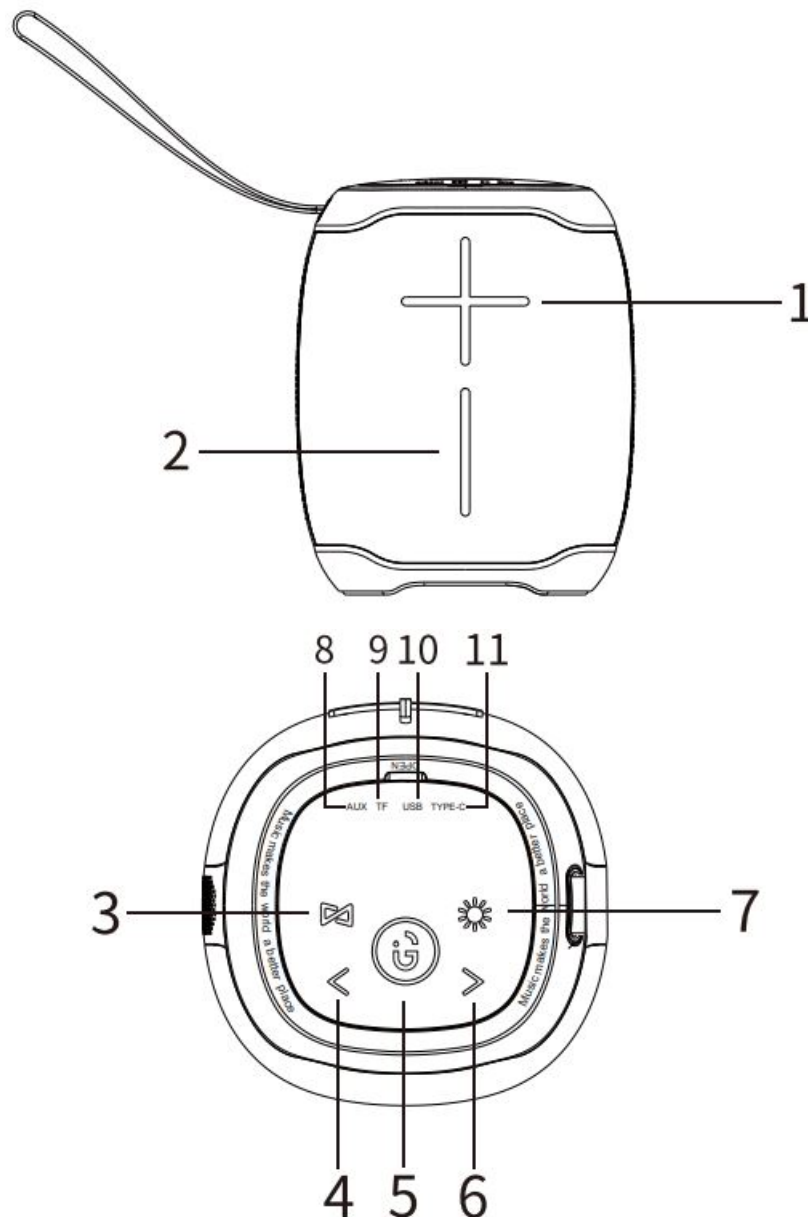
- **Bluetooth version:** 5.0
- **Transmission distance:** 10 meters
- **Output power:** 15W
- **Playing time:** up to 12 hours (at 50% volume)
- **Frequency effect:** 80Hz-15Khz
- **Speaker:** 66mm
- **Input power:** DC 5V
- **Battery type:** 1800mAh
- **Audio input:** 3.5mm headphone jack (stereo)

Features

1. Bluetooth connection
2. Memory function, breakpoint resuming
3. Support USB/TF card/AUX playback mode
4. Built-in lithium-ion battery
5. Supports MP3/WAV/WMA/FLAC music format
6. IPX5 Splashproof
7. TWS (True Wireless Stereo) system

8. FM Radio
9. 180-degree dazzle light
10. High fidelity speakers

Keys to Operation



1. **Volume up button:** Press once to increase the Volume.
2. **Volume down button:** Press once to decrease the Volume.
3. **TWS Button/Mode Button** Single click to connect/disconnect two “iGear Spectrum mini” Speakers. Simultaneously Long press to switch modes. Double-click in Bluetooth Mode to redial; Short-press to answer/hang up a call. In case of an incoming call, long press for 2 seconds to reject the incoming call.
4. **Previous Song button:** Press once to go to the previous song
5. **Power Button** Long press to turn ON/OFF the speaker Single click to Play/Pause the song.
6. **Next Song button:** Press once to go to the next song
7. **Dazzle Light button** Long press to turn ON/OFF the light mode Short press to switch between different light modes Double click to disconnect/reconnect Bluetooth connection.
8. **AUX Jack** When using the radio , you need to insert the AUX cable as a radio antenna.

9. TF card slot
10. USB drive slot
11. Type-C Charging Port

Directions to use

1. Bluetooth pairing

Turn on the Bluetooth on your device, search for “iGear Spectrum mini”, connect and pair, After a successful connection, start playing your desired music.

2. TWS mode

Turn on two “iGear Spectrum” speakers at the same time, short press the TWS button on one of the speakers once you hear a beep, the speaker enters into the TWS mode, there will be a prompt when the pairing is successful. After the pairing is successful, the LED indicator of the main speaker flashes, and the LED indicator of the secondary speaker will stay on.

3. Mode switching

The speaker enters Bluetooth mode by default when it is turned on. To switch modes long-press the TWS button The sequence of mode switching is as follows:

1. Bluetooth mode
2. TF card mode
3. USB mode
4. AUX mode.

Troubleshooting

1. **Auto shutdown:** When the battery power is low, the battery saver function will turn on automatically, please charge it for 4 hours before use.
2. If there is no sound when connected to the computer: the computer interface is connected incorrectly, please select the correct audio output port
3. If there is no response from the keys when pressed: try restarting the speaker
4. If the machine has an abnormality, you can short-press the light mode button twice to reset it.

Warranty

Warranty period: 1 Year

In case of consumer complaints:

Customer care – +91 9372667193

Email: sales@igear.asia

(Between 10-am to 5-pm, Mon-Fri) www.igear.asia

Documents / Resources

	iGear SPECTRUM Mini Portable Bluetooth Speaker [pdf] User Manual SPECTRUM, SPECTRUM Mini Portable Bluetooth Speaker, Mini Portable Bluetooth Speaker, P ortable Bluetooth Speaker, Bluetooth Speaker, Speaker
---	---

References

-  [Buy Speakers, Soundbars, Wireless Earbuds, Keyboards, Lamps at Best Price | iGear](#)

Manuals+.