



## IFIXIT Alienware X51 Desktop Gaming Computer Instructions

[Home](#) » [IFIXIT](#) » IFIXIT Alienware X51 Desktop Gaming Computer Instructions 



### Alienware X51 R1/R2/R3 RAM Replacement

This guide will encompass how to replace a faulty memory card for the Alienware X51 R2 or R3 PC.

Written By: Daniel Niles



## Contents

### 1 INTRODUCTION

#### 2 Step 1 — Remove the Panel Screw

#### 3 Step 2 — Disconnect LED Control Cable

#### 4 Step 3 — Remove Fan Screws

#### 5 Step 4 — Disconnect/Remove the DVD Drive

#### 6 Step 6 — Insert New Ram Card

#### 7 Documents / Resources

#### 8 Related Posts

## INTRODUCTION

Before starting this guide, You should take the proper precautions to prevent damage to your machine, and to yourself. Please do the following before starting this guide:

1. Unplug the computer from the external power supply
2. Press (and hold) the power button for 3 seconds. (This will ensure that the system uses any excess power in the board)

An ESD Strap is recommended as this prevents damage to your computer



### TOOLS:

- Phillips Screwdriver (1)
- ESD Gloves or Bracelet (1)

## Step 1 — Remove the Panel Screw

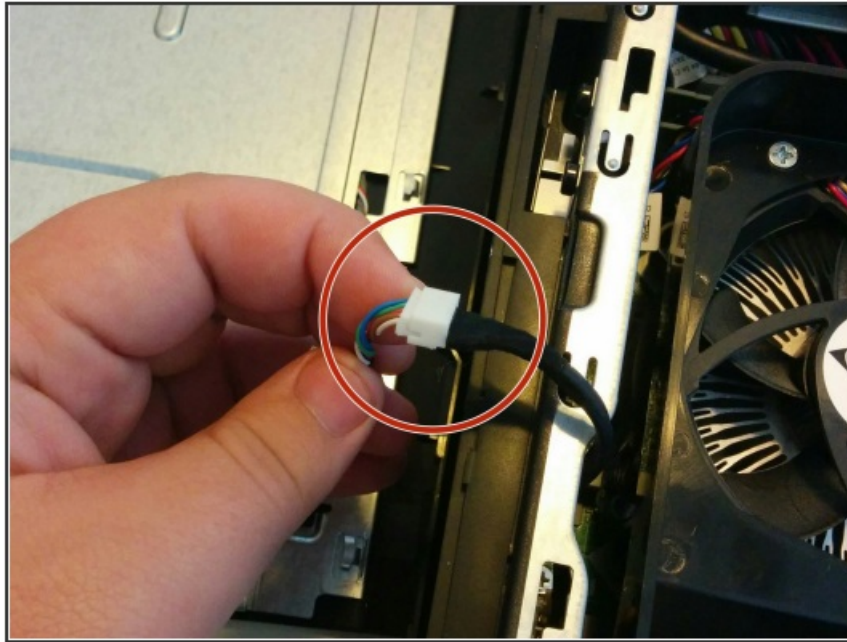


- First, turn the computer so you can see the rear panel. Remove the small screw to the right (or above, if the

system is on its side) of the audio jacks.

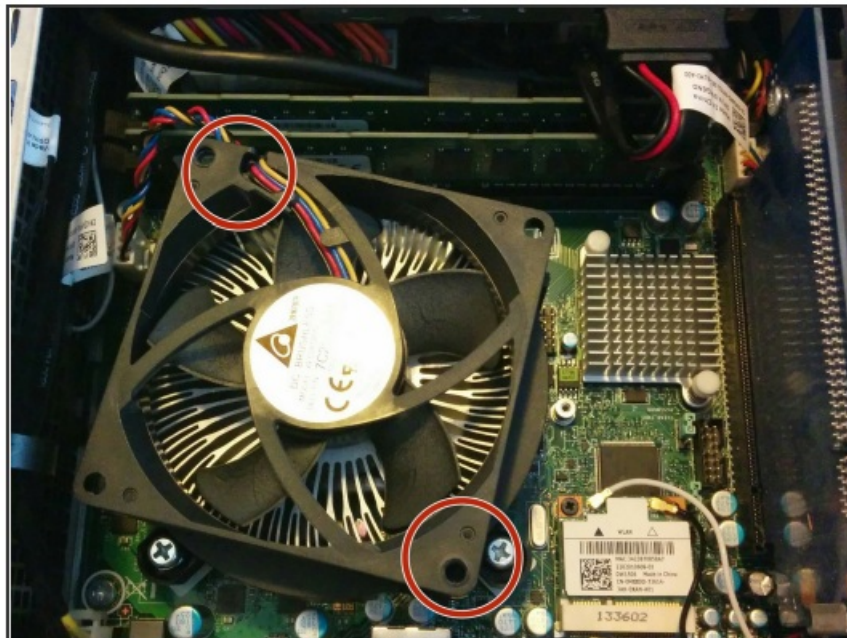
- Once the screw is removed, use both hands to push the side panel down and toward the front of the case.

## Step 2 — Disconnect LED Control Cable



- Lift the side panel off, and gently flip it over the top of the system, being careful not to break the LED control cable. Unplug its connector and set the case panel to the side.

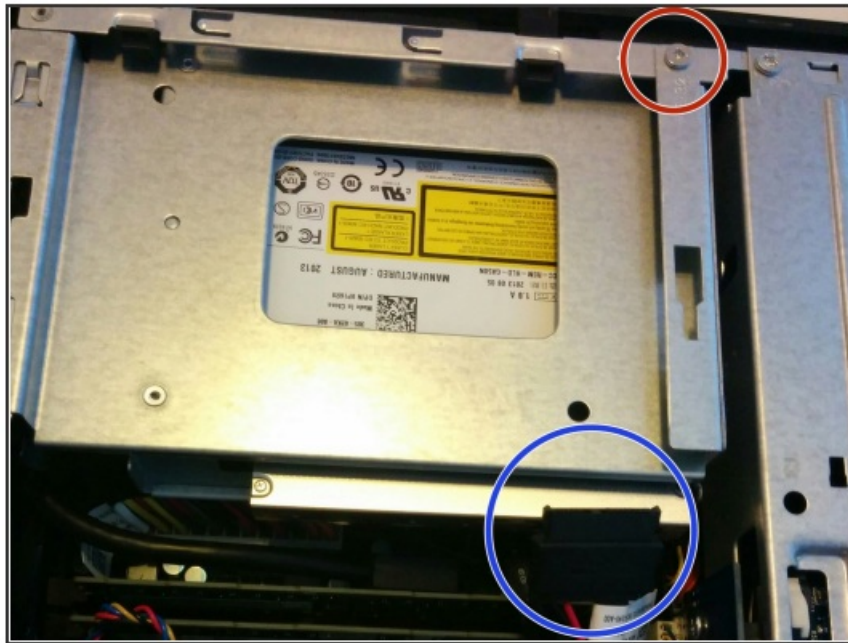
## Step 3 — Remove Fan Screws



- Next, remove the screws securing the plastic air re-director (not shown in picture) to the fan, and gently lift it

## Step 4 — Disconnect/Remove the DVD Drive

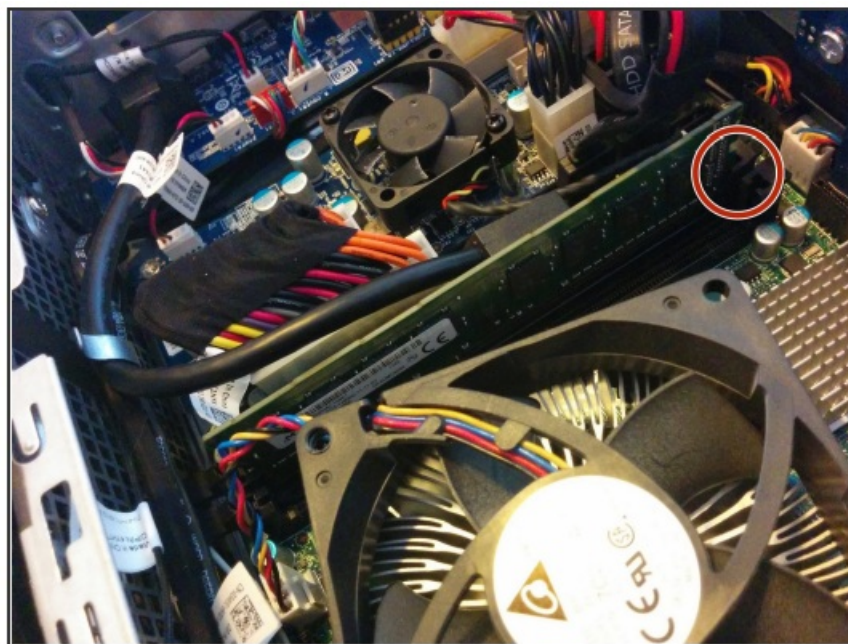




● Unplug the SATA cable at the base of the DVD drive circled in blue. This cable will have a lot of tension on it, but do not worry. Just be careful not to yank on it too much.

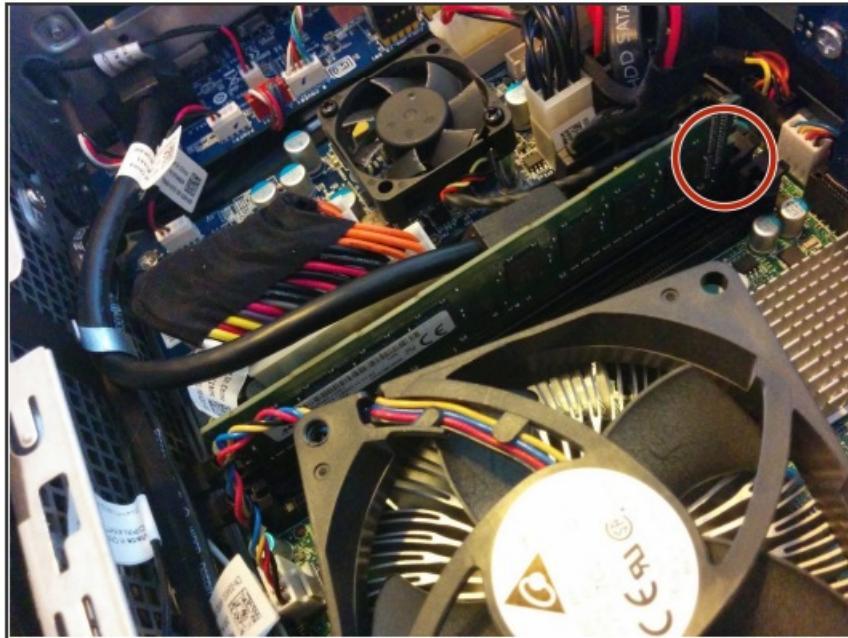
● You will then unscrew the screw securing the DVD drive to the case (circled in red). Once the screw is removed, remove the DVD drive and set to the side.

#### Step 5



● Now, push the white latch (circled in red) DOWN and pull the ram card straight up to a ~45-degree angle. Pull up and out, towards the latch side, and set aside.

#### Step 6 — Insert New Ram Card



- You will insert the new DIMM. Push the side opposite to the latch first, being sure that the notch in the connector matches the location on the ram DIMM.
- Insert at a ~45-degree angle and push straight down into the socket, being sure that the latch clicks.



**DO NOT FORCE THE DIMM IN.**

Rotate the card and try again if the card will not go into the port.


To reassemble your device, follow these instructions in reverse order.

This document was generated on 2022-09-08 at 01:22:46 AM (MST).

© iFixit — CC BY-NC-SA

[www.iFixit.com](http://www.iFixit.com)

## Documents / Resources

	<p><a href="#">iFixit Alienware X51 Desktop Gaming Computer</a> [pdf] Instructions</p> <p>Alienware X51, Desktop Gaming Computer, Gaming Computer, Desktop Computer, Computer, Alienware X51</p>
---	--