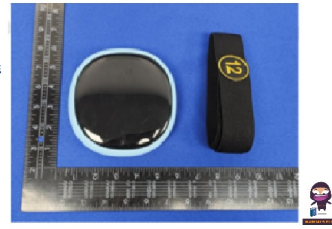




SMGO101
GOPod
Training
Device



IF INTERACTIVE SMGO101 GOPod Training Device User Manual

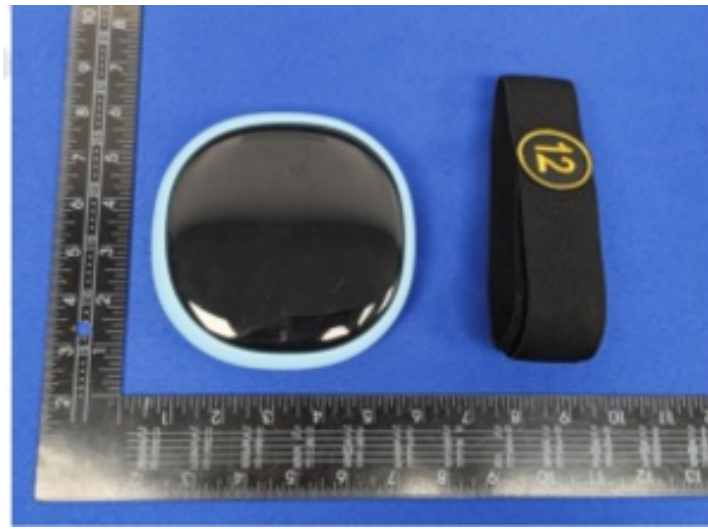
[Home](#) » [IF INTERACTIVE](#) » IF INTERACTIVE SMGO101 GOPod Training Device User Manual

Contents

- [1 IF INTERACTIVE SMGO101 GOPod Training Device](#)
- [2 Product Introduction](#)
- [3 Product Setup](#)
- [4 Technical Specifications](#)
- [5 Warranty Notice](#)
- [6 Federal Communications Commission \(FCC\) Statement.](#)
- [7 Documents / Resources](#)
 - [7.1 References](#)
- [8 Related Posts](#)



IF INTERACTIVE SMGO101 GOPod Training Device



Product Introduction

With GOPod, learning and training become fun and engaging. The device can display in different colors, numbers and alphabets. User engages in training by tapping with the device.

Product Setup

1. Remove the GOPod device from the storage box.
2. Press and hold the power button for 2-3 seconds to turn on the GOPod.
3. After turning on the GOPod, the device ID of the GOPod will be displayed on the device.
4. Connect the GOPod in the GOPod App.
5. Once the connection is complete, the GOPod will display a red number, indicating that the entire connection process is finished, and you can begin using the device.

Technical Specifications

Dimensions:

- GOPod Device: 15 cm x 15 cm x 4 cm

Color:

- GOPod Device:
 - Top: Black
 - Bottom: White
- Protection Case for GOPod Device: Blue
- Carrying Case: Black

Battery Life:

- Fully charge: 2-3 hours
- Normal Usage: 8 hours
- Charging Voltage: 5V/3A, 9V/2A, 12V/1.5A

Attention

Device Charging

- Charging plugs are provided. It is strongly advised to only use the charging plug provided in the GOPod package for charging GOPod devices.

Cleaning

- The GOPod device can be wiped with alcohol tissue. It is advised to only charge the device after fully dried up (usual drying time is 1-2 hours).

Warranty Notice

Product Warranty Period: One year from the date of purchase. Should any hardware issue arise, our technical team will provide assistance and troubleshooting. If the issue cannot be resolved remotely, we will arrange for on-site maintenance or replacement of the hardware as necessary. Please be noted that replacement of hardware device is only available under the condition of non-artificial damage.

Federal Communications Commission (FCC) Statement.

This device complies with part 15 of the FCC Rules. Operation is subject to the following two conditions:

1. This device may not cause harmful interference, and
2. this device must accept any interference received, including interference that may cause undesired operation.

Note: This equipment has been tested and found to comply with the limits for a Class B digital device, pursuant to part 15 of the FCC Rules. These limits are designed to provide Reasonable protection against harmful interference in a residential installation. This equipment generates, uses and can radiate radio frequency energy and, if not installed and used in accordance with the instructions, may cause harmful interference to radio communications. However, there is no guarantee that interference will not occur in a particular installation. If this equipment does cause harmful interference to radio or television reception, which can be determined by turning the equipment off and on, the user is encouraged to try to correct the interference by one or more of the following measures:

- Reorient or relocate the receiving antenna.
- Increase the separation between the equipment and receiver.
- Connect the equipment into an outlet on a circuit different from that to which the receiver is connected.
- Consult the dealer or an experienced radio/TV technician for help.

Warning: Changes or modifications made to this device not expressly approved by IF Interactive may void the FCC authorization to operate this device. Note: The manufacturer is not responsible for any radio or TV interference caused by unauthorized modifications to this equipment. Such modifications could void the user's authority to operate the equipment.

RF exposure statement:

This device complies with FCC RF radiation exposure limits set forth for an uncontrolled environment. The device is installed and operated without restriction.

Documents / Resources

 Product Manual GOPod Training Device SMGO101	IF INTERACTIVE SMGO101 GOPod Training Device [pdf] User Manual SMGO101 GOPod Training Device, SMGO101, GOPod Training Device, Training Device, Device
---	--

References

- [User Manual](#)

Manuals+. Privacy Policy

This website is an independent publication and is neither affiliated with nor endorsed by any of the trademark owners. The "Bluetooth®" word mark and logos are registered trademarks owned by Bluetooth SIG, Inc. The "Wi-Fi®" word mark and logos are registered trademarks owned by the Wi-Fi Alliance. Any use of these marks on this website does not imply any affiliation with or endorsement.