



Contents [[hide](#)]

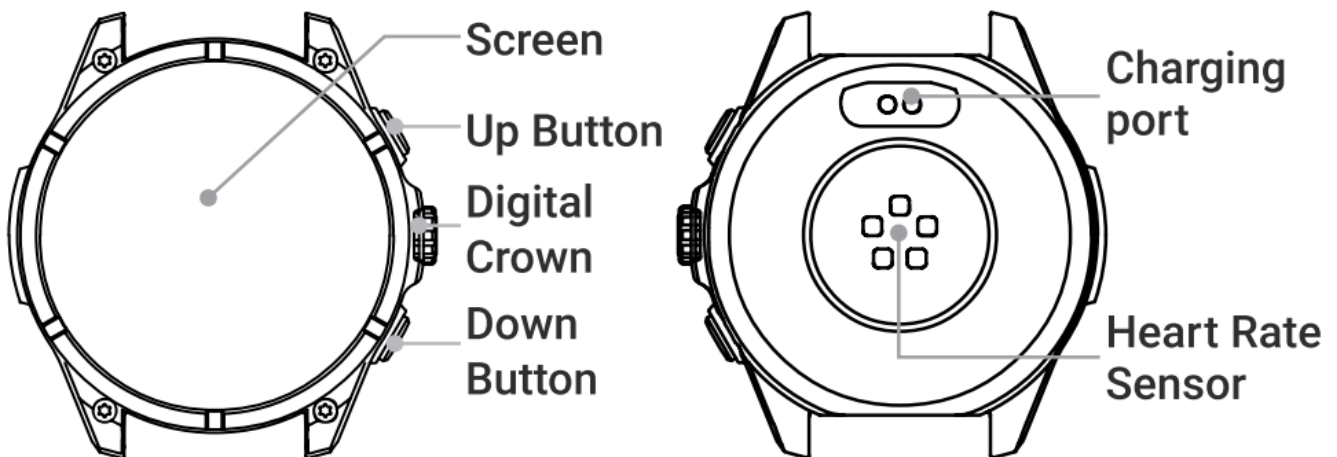
- [1 IEECOO FT66 Smart Watch](#)
- [2 Understanding Your Watch](#)
- [3 Set up the Watch](#)
- [4 Get Started](#)
- [5 Common Functions](#)
- [6 Specifications](#)
- [7 Precautions](#)
- [8 Frequently Asked Questions](#)
- [9 FCC Requirement](#)
- [10 Documents / Resources](#)
 - [10.1 References](#)

ieecoo

IEECOO FT66 Smart Watch



Understanding Your Watch



Steps for Use

You can follow these steps to use:

1 Wear → **2** Power On → **3** Set up → **4** Start Using

The following steps will take approximately 5 to 10 minutes.

Please schedule a suitable time.

Wear Your Watch

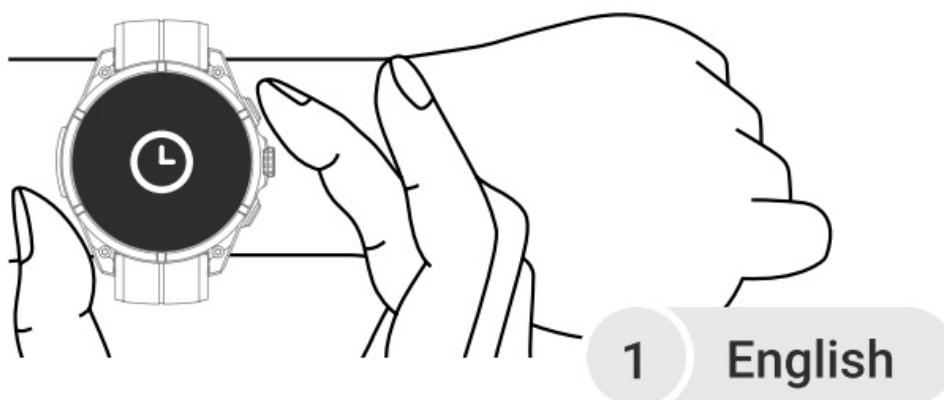
For optimal data accuracy, please observe the following guidelines.



While wearing the watch

1. Wear the watch at a position approximately two finger-widths from your wrist bone.
2. For comfort, adjust the band to allow a finger's width between it and your wrist. This ensures both contact and fit.

Power On



Press the Digital Crown until the startup screen appears.

Note: If the watch can't power on, it may be because the battery has drained due to long periods of inactivity.

Please charge it for approximately 10 minutes and wait for it to power on automatically.

Set up the Watch

Step 1: Download the Fitbeing app



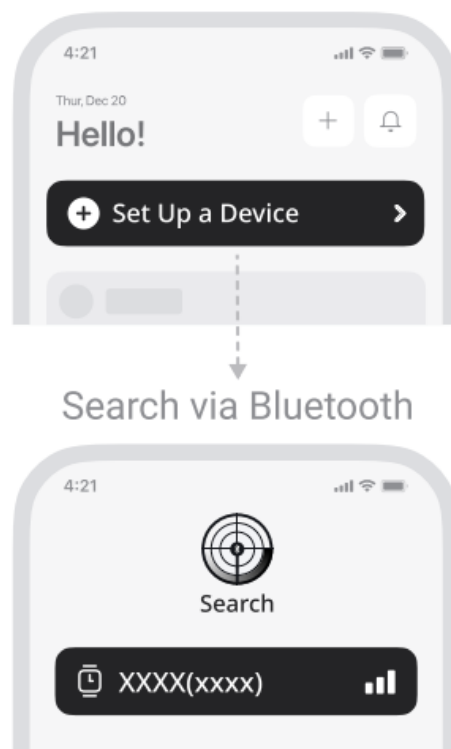
Go to the app store on your phone, search for Fitbeing, and install it.

- For Android phones, go to the Google Play.
- For iPhone, go to the App Store.



You can also scan the QR code on the left to Quickly go to the Fitbeing app in the app store, and install it.

Step 2: Pair with the App



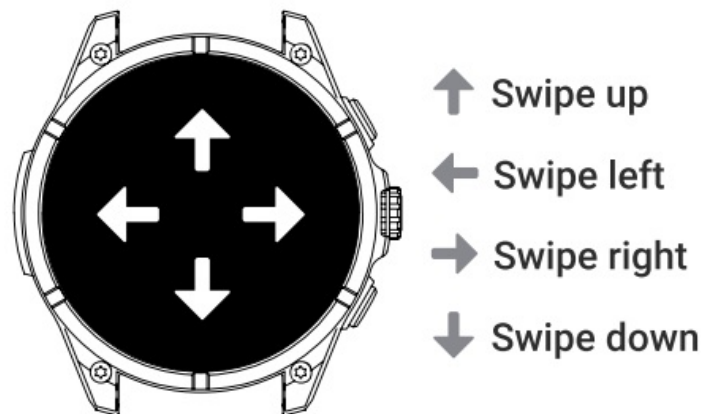
Open the Fitbeing app and select “Set Up a Device” on the home page. Follow the

instructions to pair your device with Bluetooth. Then you can start using the watch.

Attentions

1. To prevent connection issues between the app and the watch, please do not pair directly within the Bluetooth device list in your phone system settings.
2. To ensure successful pairing, please grant the Fitbeing App permissions to access Bluetooth, Location, and Camera on your phone.

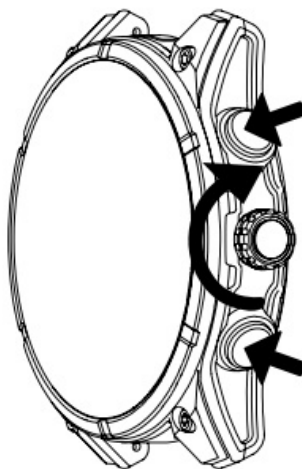
Get Started



Touchscreen Operation

Support full-screen touch (swipe, tap, touch and hold)

Press the Up Button



1. Short press to access quick functions.
2. Long press to set quick functions.

Press the Crown

1. Long press to power on/off.
2. Enter the main menu.
3. Return to the home screen.

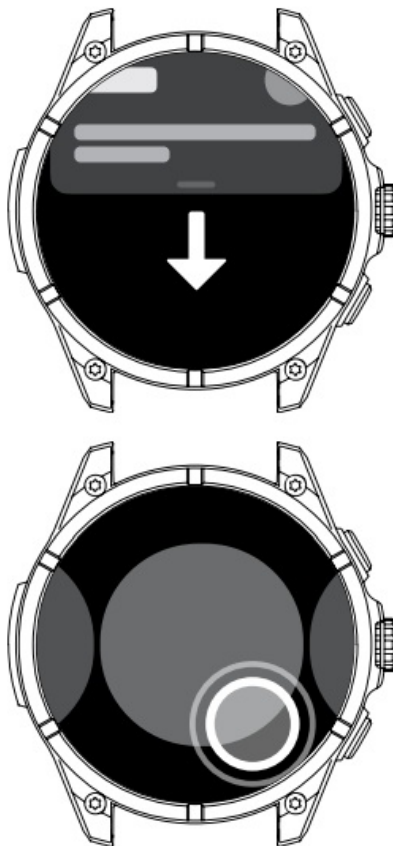
Rotate the Crown

1. Scroll/flip through menus.
2. Adjust volume and brightness.

Press the Down Button

1. Short press to quickly access sports.
2. Long press to enter SOS mode.

Common Functions





Notification Center

Swipe down on the watch face screen.

Change the Watch Face


To change the watch face, press and hold the screen for 1 second to access the Watch face gallery.

Control Center

- To access the Control Centre, swipe up on
- The watch face screen. Enable features like Silent Mode, Sleep Mode, and Always-on Display, and adjust brightness and volume swiftly.

Record Workouts



- To start your workout recording, access
- The Workout app and select a specific workout.
- For outdoor workouts, wait in an open area until the GPS connects. The blinking icon "  " shows it's acquiring a location.
- Fix it, and it will stop blinking upon success.

Tiles

To switch quickly between the Suggestions, Activity, Heart Rate, Sleep, Weather, or Workout tiles, swipe left or right on the watch face screen.

Health Metrics Measurement

When wearing the watch, it automatically measures health data such as heart rate, sleep, stress, and activity. You can view and track this data in the application.



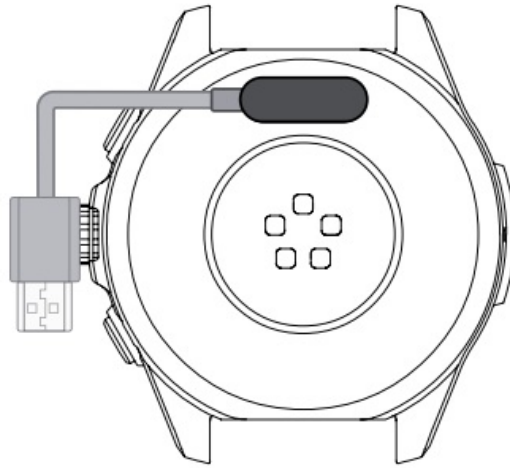
Install New Watch Faces

In the Fitbit app, navigate to the Face Gallery page to pick your preferred watch face.



Charge the Watch

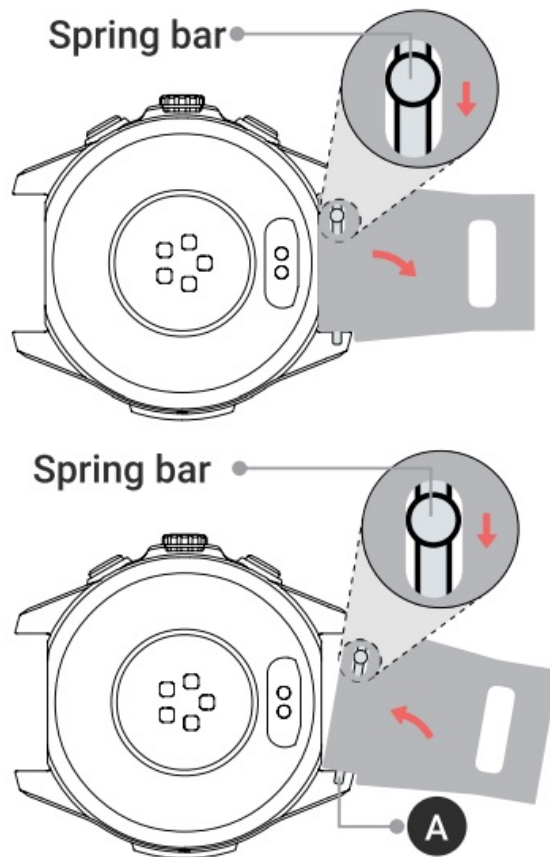
To charge the watch, connect the charging cable to a USB power source. Attach the other end to the charging contact on the back of the watch. The watch will display a charging icon while it is being charged.



Note

Make sure the USB charging plug is on the same side as the crown. Ensure to use a standard USB power source with an output of 5v 1a or above. Before charging, ensure to clean the charging contacts of the watch to eliminate any lingering sweat or moisture.

Change the Band



Remove band

1. Lift the spring bar from the groove.

2. Push and hold the spring bar.
3. Pull it out gently to remove the band.

Install band

1. Insert the metal pin at the position "A" in the hole.
2. Push and hold the spring bar.
3. Press the band into the body and release the spring bar.
4. Pull the watch band to confirm the firm installation.

Wear and Care

It is advised to remove the watch for approximately one hour daily. If you experience discomfort or irritation, like redness, tingling, or a burning sensation, take off the watch and rest your wrist. Shower gel, dishwashing liquid, or cleaning wipes, as they can cause skin irritation. Instead, use mild soap and fresh water to clean the band.

Specifications

Product Name	SMART WATCH
Display	1.43 inch AMOLED
Resolution	466*466
Battery Capacity	670mAh
Wireless Connection	Bluetooth 5.3
Water resistance	3ATM
Satellite positioning	GPS+BDS
Body Dimension	48*54*14mm
Working Temperature	0°C ~ 50°C
Compatible Operating Systems	iOS 13.0 and above, Android 9.0 and above

Precautions

- Do not replace the built-in battery yourself, as it may pose a safety risk.
- Avoid forcibly opening the watch case, as it may cause a short circuit and overheating.
- Keep the watch away from environments exceeding 60°C to prevent battery leakage or explosion.
- While the product complies with IP68 waterproof standards, it is not recommended for activities such as bathing, diving, or water sports skiing that involve high temperatures, steam, or rapid water flow.
- Note that the waterproof performance may be compromised if the product structure is damaged.
- Be aware that firmware upgrades can lead to interface and usage changes.
- For detailed information, please refer to the product's Upgrade instructions.

Frequently Asked Questions

If you encounter any problems while using

The product, you can access the “Profile — Help & Support section in the Fitbeing app for assistance.

Scan the QR code on the right to access or visit help.fitbeing.com for assistance.



Product Manual



You can find the complete product manual in the Fitbeing app at “Profile → User Guide”. Scan the QR code on the right to access it, or visit help.fitbeing.com to browse.

FCC Requirement

Any changes or modifications not expressly approved by the party Responsible for compliance could void the user’s authority to operate the equipment. This device complies with Part 15 of the FCC Rules.

Operation is subject to the following two conditions

1. This device may not cause harmful interference, and
2. This device must accept any interference received, including interference that may cause undesired operation.

Note: This equipment has been tested and found to comply with the limits for a Class B digital device, under Part 15 of the FCC Rules. These limits are designed to provide reasonable protection against harmful interference in a residential installation. This equipment generates, uses, and can radiate radio frequency energy, and if not installed and used according to the instructions, may cause harmful interference to radio communications. However, there is no guarantee that interference will not occur in a particular installation. If this equipment does cause harmful interference to radio or television reception, which can be determined by turning the equipment off and on, the user is encouraged to try to correct the interference by one or more of the following measures:

- Reorient or relocate the receiving antenna.

- Increase the separation between the equipment and receiver.
- Connect the equipment to an outlet on a circuit different from that to which the receiver is connected.
- Consult the dealer or an experienced radio/TV technician for help.

FCC Radiation Exposure Statement

This device complies with the FCC RF radiation exposure limits set forth for an uncontrolled environment. The device can be used in portable exposure conditions without restriction.

This product is not designed to be a medical device, and is not intended to diagnose, treat, cure or prevent any disease. All data and measurements should be used for personal reference only.

All images on the packaging are for reference only, the actual product may differ from images on the packaging (including but not limited to colour, shape, and screen display).

Battery warning: Do not disassemble, puncture, crush, heat, or burn.



Documents / Resources

 User Manual	ieecoo FT66 Smart Watch [pdf] User Manual 2A42I-FT66, 2A42IFT66, ft66, FT66 Smart Watch, FT66, Smart Watch, Watch
--	--

References

- [User Manual](#)

Leave a comment

Your email address will not be published. Required fields are marked *

Comment *

Name

Email

Website

☐ Save my name, email, and website in this browser for the next time I comment.

Post Comment

Search:

e.g. whirlpool wrf535swhz

Search

[Manuals+](#) | [Upload](#) | [Deep Search](#) | [Privacy Policy](#) | [@manuals.plus](#) | [YouTube](#)

This website is an independent publication and is neither affiliated with nor endorsed by any of the trademark owners. The "Bluetooth®" word mark and logos are registered trademarks owned by Bluetooth SIG, Inc. The "Wi-Fi®" word mark and logos are registered trademarks owned by the Wi-Fi Alliance. Any use of these marks on this website does not imply any affiliation with or endorsement.