



ids 805 Alarm System User Manual

[Home](#) » [IDS](#) » ids 805 Alarm System User Manual 

Contents

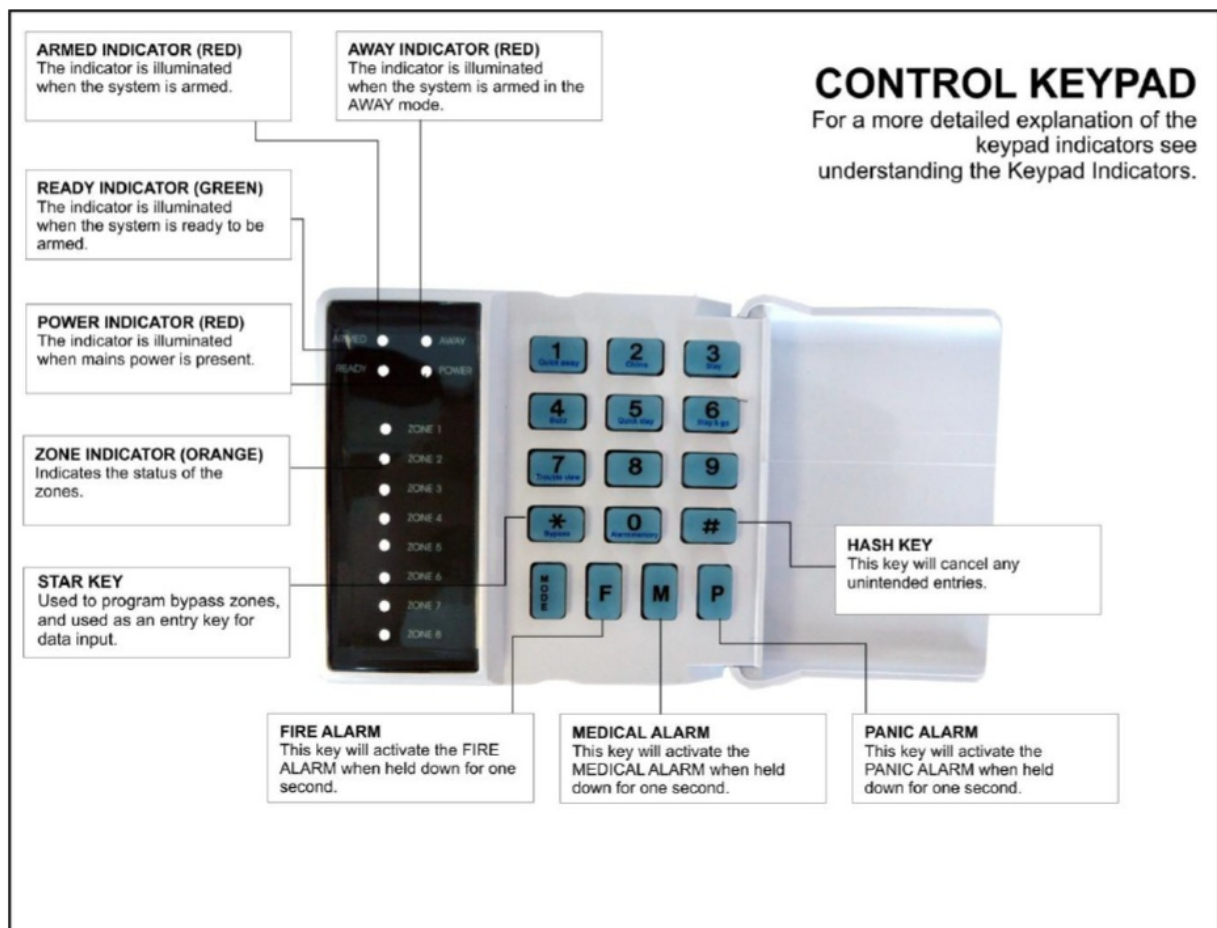
- 1 ids 805 Alarm System User Manual
- 2 CONTROL KEYPAD
- 3 Introduction to the IDS805
- 4 Understanding the Keypad Indicators
- 5 Operation of the Keypad
- 6 System Information
- 7 User Codes
- 8 Away Arming
- 9 Arming from a Key-switch or Remote Control
- 10 Zone Bypassing
- 11 Disarm the System
- 12 Panic Alarm Hold down the [P] key until the beep
- 13 User Codes The IDS805
- 14 Troubleshooting
- 15 Warranty
- 16 Related Posts

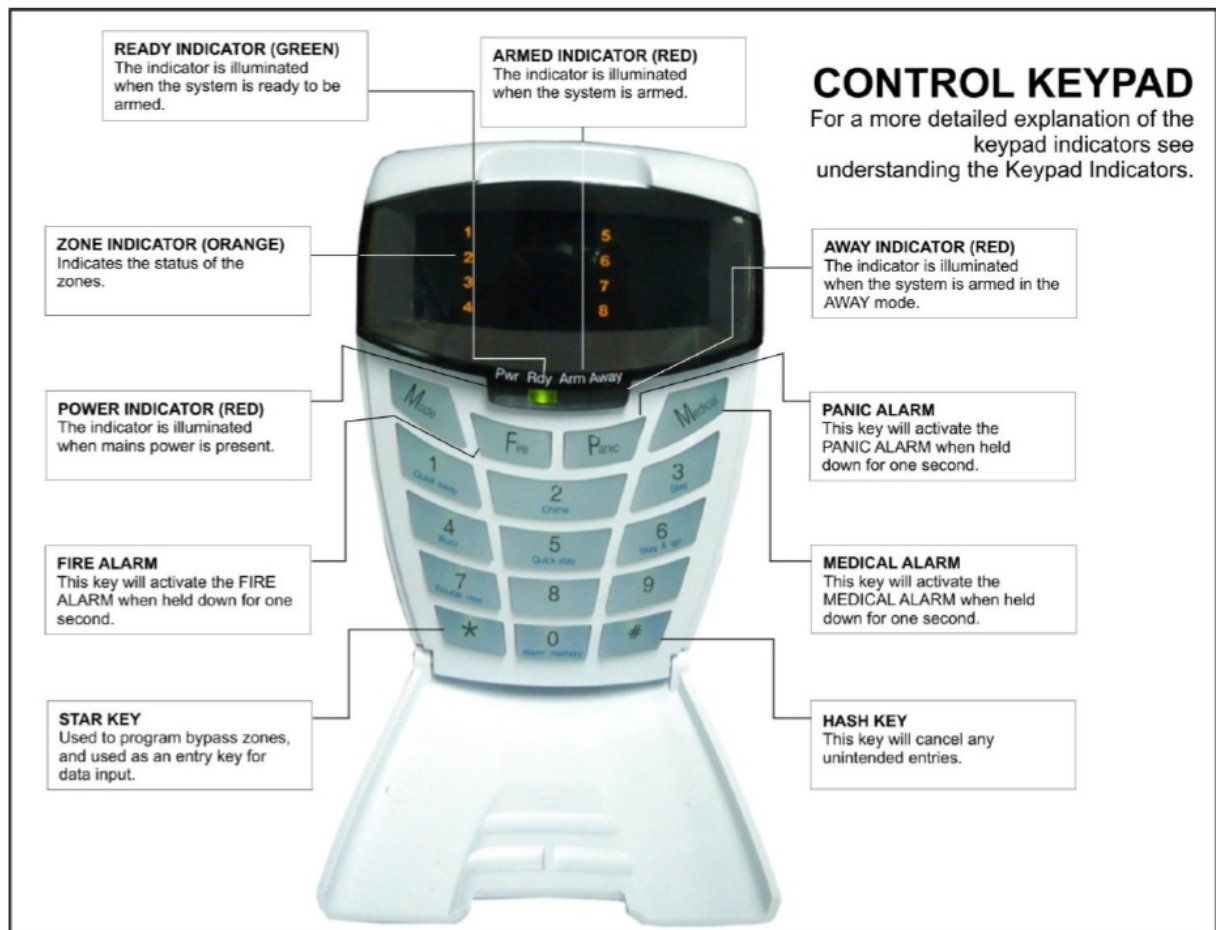


ids 805 Alarm System User Manual



CONTROL KEYPAD





Glossary Alarm Memory

This is the history of the most recent violations that occurred the last time the system was armed.

Arm

To set the system into ARMED mode. In this mode, violating a zone will activate an alarm condition. If the system is programmed accordingly, it will cause a reporting code to be sent to the monitoring company.

Bypass

To deactivate a zone. When the panel is ARMED, the violation of a bypassed zone will be ignored.

Disarm

To deactivate the system. Fire, medical, and panic functions remain active while the system is disarmed.

Entry/Exit Zone

A zone with a programmable time delay, which allows the user to exit the premises after arming the system and time to get to the keypad after entering the armed premises. This zone is generally the last exit point of the building and the first entry point i.e. the front door of a home.

Follower Zone

A zone that may be temporarily violated during the exit delay period or after violation of an Entry/Exit zone. This allows the user access to disarm the system. A Follower zone will behave as per an Instant zone if violated prior to the violation of an Entry/Exit zone.

Instant Zone

When the system is armed, violation of an Instant zone will immediately cause an alarm condition to be registered.

Stay Arm Arming that allows for certain preprogrammed, STAY zones to be violated while the system is armed.

Stay Arm and Go

Arming allows the user to STAY ARM and leave the premises.

Stay Zone

Zones are bypassed automatically when the system is STAY-ARMED.

Zone

A specific area of your premises is guarded by sensors that detect violations of that area.

Introduction to the IDS805

The IDS805 Control Panel is manufactured to the highest specification and will provide many years of service if correctly installed and maintained. The unit is designed for simple operation yet provides the maximum protection for you, your family, or your business. For trouble-free operation, please follow the instructions contained in this User Manual. Your security system consists of a control panel, one or more keypads, and various sensors and detectors. An enclosure will contain the control panel which includes the system electronics, fuses, and standby battery. There is normally no reason for anyone other than the installer or service professional to have access to the control panel.

Notes

- Read the entire manual carefully and keep it in an accessible place.
- Your security system should be installed and serviced by a qualified security professional who should instruct you regarding the level of protection provided and the operation of the system.
- Should you have any questions regarding the operation of the system, contact your security company representative.
- Your system should be tested on a regular basis. Before testing the system, please notify your security company of your intention to do so.
- NEVER disconnect the mains power, as the backup battery will eventually discharge thereby causing the control panel to shut down.
- A security system cannot prevent emergencies. It is only intended to alert you and – if included -your central station of an emergency situation.
- Smoke and heat detectors may not detect all fire situations.

Understanding the Keypad Indicators

Refer to the labeled pictures of the keypads.

ARMED Indicator (Red)

On	System Armed
Off	System Disarmed
Flashing	Alarm Condition (Check Alarm Memory zone details BEFORE re-arming)

AWAY Indicator (Red)

On	System Armed in Away Mode
Off	System Disarmed / Armed in Stay Mode
Flashing	User Programming (Chime/Buzz/Stay zones)

POWER Indicator (Red)

On	Mains Power is Present
Flashing	Trouble Condition

READY Indicator (Green)

On	System is Ready to be Armed
----	-----------------------------

ZONE Indicators (Yellow)

On	System is Ready to be Armed
----	-----------------------------

Operation of the Keypad

To ensure correct operation of your security system it is essential to familiarize yourself with the use of the keypad.

- The keypad has a buzzer, command entry keys, and zone and system status LEDs. The keypad is used to send commands to the system and to display the current system status.
- The keypad(s) will be mounted in a convenient location within the protected premises generally close to the Entry/Exit zones.
- After a preprogrammed period of inactivity, the keypad will automatically enter into a power-save mode by turning off all the indicators. The keypad “wakes up” or comes on when any key is pressed or any zones are violated. The power save feature is programmable and may be disabled.
- A sensor that has registered an alarm condition will be indicated on the keypad by the corresponding zone light flashing.

The keypad buzzer will sound under the following conditions.

- When any key is pressed during the entry of codes.
- Three times if one or more of the zones are violated when attempting to arm the system.
- To indicate a trouble condition.
- During the entry/exit delay.
- Will sound 5 times when a chime zone is violated.

System Information

Programmed Functions

Check with your installer which of the following functions has been enabled.

- Quick Away Arm
- Quick Stay Arm
- Arm with Entry/Exit or Follower Zones Violated
- Stay Arm
- Stay Arm and Go
- Forced Arming
- Push to Arm
- Siren Sound on Arm/Disarm (single toot – arm/ double2 toot – disarm)
- Panic Alarm
- Fire Alarm
- Chime Zones
- Buzz Zones
- Zone Tamper Monitoring
- Arm with Key-switch or Remote Control
- Exit Delay with Key-switch or Remote Control
- Installers Reset after Alarm

User Codes

User No.	User Code	User Name
01	Default Master Code: 1234 NEW Code:	
02		
03		
04		
05		
06		
07		
08		
09		
10		
11		
12		
13		
14	Maid's Code:	
15	Duress Code:	

Zone Information

Zone	Zone Type e.g. Entry/Exit	Zone Name e.g. Kitchen Door
1		
2		
3		
4		
5		
6		
7		
8		

The Primary Entry Delay is		Seconds
The Secondary Entry Delay is		Seconds
The Exit Delay Is		Seconds

Arming the System

There are various options for arming the system

Away Arming

[#] + [USER CODE] (Leave via Entry/Exit Zone)

1. Ensure that the READY indicator is on; if not, check that all protected doors and windows are closed and that motion has ceased in areas covered by motion detectors.
2. If necessary, close the front door.
3. Press the [#] key to cancel any unintended key entries.
4. Enter a valid 4-digit [USER CODE]. If you make a mistake, press the [#] key and re-enter the code.
5. The ARMED indicator will come on and the keypad's buzzer will sound on and off for the duration of the exit delay. A steadily lit zone indicator will show any bypassed zones.
6. The arming process has begun. Leave only via the Follower and Entry/Exit zones.
7. The panel will arm at the end of the exit delay.

OR

8. if the panel is so programmed, violating the Push to Arm zone will arm the panel immediately.

Quick Away Arming

Hold down the [1] key until the beep

If this function is enabled, it is possible to AWAY arm by simply holding down the [1] key until the keypad buzzer sounds and the arming process begins.

Stay Arming

This allows the user to arm the perimeter zones while disabling the interior zones so that it is possible to remain on the premises. If zones are likely to be violated accidentally, they should be programmed as BUZZ zones (refer to page 19). The panel can be programmed with two different STAY PROFILES to be used as required. Following is an example of where this may be used. Assume a property has perimeter sensors to secure a garden fence and a number of internal sensors within each room of the house.

The first STAY PROFILE would function as follows: At night while you are within the house going about your normal evening activities it may be desirable to activate the alarm such that any violation of the perimeter sensors will cause an alarm. Therefore, this profile would have all internal sensors programmed as STAY zones (bypassed) and perimeter sensors would be normal alarm zones. A second STAY PROFILE would then be utilized once the family retires to their bedrooms. All bedrooms would therefore be STAY zones (bypassed) while unused zones i.e. a lounge and TV room, together with perimeter zones would be normal alarm zones.

NOTE:

Once a particular stay profile is selected, the system will use the selected profile each time the system is armed into the STAY MODE. If the alternate profile is required, it is necessary to select the alternate profile before the system is armed.

The arming procedures and quick keys will have an effect on the selected profile. STAY and BUZZ zones can be programmed for each profile once the profile has been entered.

To Enter a Stay Profile [#] + [MODE] + [9] + [PROFILE NUMBER] + [*]

1. Press the [#] key to clear any previous entries.
2. Press [MODE].
3. Press [9] then press [1] or [2] for the required profile.
4. Press [*] to enter. A long beep should be heard.
5. Program STAY and BUZZ zones for the profile or ARM the profile (See sections 12 and 13).

To Stay Arm [#] + [USER CODE] (Do not leave premises)

1. Select the required STAY PROFILE.
2. Ensure that the READY indicator is on; if not, check that all protected doors and windows are closed and that motion has ceased in the areas covered by motion detectors.
3. If necessary, close the front door.
4. Press the [#] key to cancel any unintended entries.
5. Enter a valid [USER CODE].
6. The ARMED indicator will come on and the keypad buzzer will sound on and off for the duration of the exit delay.
7. DO NOT open the front door. If the front door is opened, the system will arm in AWAY mode.
8. The AWAY indicator will remain off.
9. Any STAY zones (shown by a steadily lit indicator) will be automatically bypassed.
10. Ensure that you enter only those zones that are bypassed.

Quick Stay

Arming Hold down the [5] key until the beep It is possible to STAY arm by holding down the [5] key until the keypad beeps. There is no exit delay. 5.5 Stay Arm and Go Hold down the [6] key until the beep This is a quick function that allows the user to STAY arm and leave the premises.

1. Hold down the [6] key until the keypad buzzer sounds. The keypad buzzer will now sound on and off for the duration of the exit delay

2. At the end of the exit delay, the ARMED indicator will come on and the AWAY indicator will remain off. Any stay zones will be bypassed.
3. Be sure to leave only via the Follower and Entry/Exit zones

Arming from a Key-switch or Remote Control

There are several options related to this function. Verify with your installer which of the following has been installed:

- Key-switch or Remote Control installed
 - Exit Delay with Key-switch or Remote Control
 - Single toot on Arm
 - Double toot on Disarm
 1. Ensure that the READY indicator is on before leaving.
 2. Leave and close the door (remembering to lock it!).
 3. Press the remote button or twist and release the key switch.
 4. The alarm will arm immediately and the remote ARM indicator will come on. OR If an exit delay has been enabled, the exit delay will begin.
 5. If programmed to do so, the siren will sound brief – verify with your installer.
- NOTE:** If a remote control is used, it is advisable to have the siren sound on the arm and disarm function enabled.

Auto Arming

Your system can be programmed to automatically arm itself daily at a pre-programmed time. Ask your installer to program this function if required. Should the premises be occupied at the auto-arming time, a valid [USER CODE] entered during the 3-minute arming cycle will cancel the process.

Arming with Entry/Exit or Follower Zones Violated

The system can be programmed to arm even if the Entry/Exit or Follower zones are violated. Follow the normal arming procedures i.e. Enter a valid [USER CODE], but it is not necessary to close the front door.

Forced Arming

If so programmed, the panel can be armed even if there are violated zones. This means that a monitored window can be left open or other zones can be violated and the panel will still arm. If the violated zone is then cleared, the panel will resume monitoring the zone, hence causing an alarm condition or initiation of entry delay, as appropriate, if violated.

Zone Bypassing

- The term BYPASS is used to describe a zone that has been deactivated; i.e. violation of a bypassed zone will not cause an alarm.
- It is used when access is needed to part of the protected area while the system is armed.
- Zones cannot be bypassed once the system is armed.
- Bypassed zones are automatically canceled each time the system is disarmed and must be re-bypassed before the next arming

To Bypass a Zone [*] + [ZONE NUMBER]

1. Press the [*] key (while bypassing zones, violated zones will be flashing).
2. Press the number corresponding to the zone you need to bypass e.g. the [2] key if you wish to bypass zone 2.
3. The relevant zone indicator will come on to indicate that the zone is now bypassed.
4. Repeat steps 1 and 2 to bypass any other zones.

To Un-bypass a Zone [*] + [ZONE NUMBER]

1. Press the [*] key.
2. Press the number corresponding to the currently bypassed zone
3. The zone indicator will turn off – the zone is now active

Disarm the System

Disarm with a User Code [#] + [USER CODE] To disarm the system, enter a valid [USER CODE] before the expiry of the entry delay. Although not essential, it is recommended that the [#] key be pressed before entering a user code as this clears any unintended key entries.

- Enter the premises through a designated Entry/Exit door. Entering via any other route will cause an alarm.
- soon as the Entry/Exit zone is violated i.e. the door has been opened, the entry delay begins.
- The keypad buzzer will sound for the duration of the entry period to indicate that a valid user code is required

If the ARMED indicator remains lit, an error was made while entering the user code, pressing the [#] key, and re-entering the code.

- Once the system disarms, the ARMED indicator will turn off and the keypad buzzer will stop sounding.
- If no valid user code has been entered by the end of the entry delay period, an alarm condition will be registered.
- If the entry period is too short, have your installer change the entry delay period.
- If four incorrect user codes are entered consecutively while either arming or disarming the system, the keypad will be non-responsive for 30 seconds. Your monitoring company will also be notified on a keypad tamper

NOTE: If the ARMED indicator is flashing upon entry, there has been a violation. The intruder may still be inside! Call for assistance.

NOTE: If a strobe (or flashing light) has been installed and an alarm condition is registered, the light will continue flashing after the siren has stopped sounding. Entering a valid [USER CODE] will cancel the strobe

To Disarm with a Key-switch or Remote Control

1. Press the remote button or twist and release the key switch.
2. The system will disarm and the remote indicator (if installed) will turn off.
3. If programmed to do so, the siren will sound brief – verify with your installer.

Emergency Situations

Fire Alarm Hold down the [F] key until the beep

- If the [F] key is pressed until the keypad beeps (approximately 1 second) a FIRE ALARM condition will be

activated.

- The FIRE ALARM CONDITION can also be triggered by a smoke detector connected to an appropriately programmed zone.
- The siren will sound (1 second on, 1 second off) and the FIRE REPORTING CODE will be transmitted to the monitoring company.
- To silence the siren enter a 4-digit [USER CODE]. The siren will stop sounding after 10 minutes if no user code is entered.

Panic Alarm Hold down the [P] key until the beep

- If the [P] key is pressed until the keypad beeps (approximately 1 second) a PANIC ALARM condition will be activated.
- Any FIXED PANIC or REMOTE PANIC buttons which may have been installed can also activate a PANIC ALARM.
- If the audible panic option has been selected, the siren will sound. A PANIC REPORTING CODE will be transmitted to the monitoring company.
- To silence the siren, enter a valid 4-digit [USER CODE]. If the siren is not canceled, it will stop automatically after the programmed SIREN TIME OUT period.
- Ensure that your installer has enabled this function if it is required.
- Press this key only in an emergency situation that requires a response by emergency personnel

Medical Alarm Hold down the [M] key until the beep

- If the [M] key is pressed until the keypad beeps (approximately 1 second) a MEDICAL ALARM condition will be activated.
- The keypad's buzzer will sound rapidly for 5 seconds to indicate that a medical alarm has been initiated.

Duress Code [#] + [DURESS CODE]

- This special 4-digit user code should only use in a unique situation where an intruder forces one to disarm the system "under duress".
- When the [DURESS CODE] is entered, the control panel disarms normally – however a DURESS REPORTING CODE is transmitted to the monitoring company to inform them that you have been forced to disarm the control panel by an intruder.
- It is advisable to choose a code that can be easily remembered by all family (or staff) members

Emergency Evacuation Plan

An emergency evacuation plan should be established in case of a fire:

- Draw up a floor plan of your premises showing windows, doors, stairs, and rooftops that can be used for escape.
- Indicate a suitable escape route for each room. Always keep these routes free of obstruction.
- Establish a meeting place outdoors for a headcount of the building's occupants.
- Practice escape procedures.

System Memory

Alarm Memory

The Alarm Memory displays any zones which were violated the last time the system was armed. If the ARMED indicator is flashing before you disarm the system, a violation has occurred. To view which zone was violated, disarm the panel, and continue as indicated below. To Display Alarm Memory: Hold down the [0] key until the beep

1. Hold down [0] until the keypad buzzer sounds.
2. The READY indicator will turn off and the keypad buzzer will sound brief.
3. Flashing zone indicators show which zones were violated during the last armed period.
4. The memory status will be displayed for five seconds, or until the [#] is pressed The alarm memory will be erased the next time the system is armed

Zone Bypassed Memory

The Zone Bypassed Memory displays any zones which were bypassed during the most recent arming cycle. To Display Zone Bypassed Memory: [0] then [1]

1. Hold down [0] until the keypad buzzer sounds.
2. The READY indicator will turn off and the keypad buzzer will sound brief.
3. Flashing zone indicators show which zones were violated during the last armed cycle.
4. To view any bypassed zones, press the [1] key once.
5. Zones that have been bypassed will have flashing indicators.
6. The memory status will be displayed for five seconds.

Zone Tamper Memory

The Zone Tamper Memory displays any zones where a tamper condition has occurred. To Display Zone Tamper Memory: [0] then [2]

1. Hold down [0] until the keypad buzzer sounds.
2. The READY indicator will turn off and the keypad buzzer will sound brief.
3. Flashing zone indicators show which zones were violated during the last armed cycle.
4. To view any tampered zones, press the [2] key once.
5. Zones that have registered a tamper condition will have flashing indicators.
6. The memory status will be displayed for five seconds.

User Codes The IDS805

The Alarm Panel has 15 programmable user codes. Code 1: Master User Code Code 2 – 13: General User Codes Code 14: Maid's Code Code 15: Duress Code

Entering New and Changing Existing

User Codes [*] + [MASTER USER CODE] + [*] + [CODE NUMBER] + [*] + [NEW CODE] + [*]

1. Hold down the [*] key until the keypad buzzer sounds.
2. The ARMED and READY indicators will flash alternately, indicating that the system is in the mode which allows the programming of user codes.
3. Enter the [MASTER USER CODE] (the factory default is 1234) followed by the [*] key. The ARMED and READY indicators will begin to flash simultaneously indicating that the correct master code was entered. If an

invalid code was entered, the keypad buzzer will beep three times, and exit the programming mode.

4. Enter the [USER CODE NUMBER] you wish to change (1-15) followed by the [*] key.
5. Enter the new 4-digit [USER CODE] and press the [*] key.
6. Repeat steps 5-6 to enter or change other user codes.
7. Once all the codes are programmed, press the [#] key to exit

Deleting User Codes

Follow steps 1-5 of the previous procedure but only press the [*] key in step 6. That particular code will be deleted.

Maid's Code

The maid's code (user 14) may be used to limit access to the premises. The maid's code will only disarm the system if the same code was used for arms. If armed with a code other than a maid's code, the system will view an attempt to disarm with the maid's code as an invalid entry. Any valid user code will disarm the system if it has been armed with the maid's code.

EXAMPLE: If a maid is expected on a Monday, arming the system on a Monday morning using the maid's code will allow the maid to disarm the system. On days that any other user code (i.e. not a maid's code) has been used to arm the system entering the maid's code will not disarm the system

Stay Zones

Stay zones are those zones that are bypassed automatically when the system is STAY-ARMED. To avoid triggering the alarm, zones such as bedrooms, or other areas which require access, must be bypassed. Stay zones need only be programmed once. Each time the system is armed in the stay mode the preselected stay zones will be bypassed automatically. This also depends on which stay profile is active (5.3.1).

NOTE: Instant zones, such as panic zones, cannot be selected

To Program Stay Zones [3] + [ZONE NUMBER] + [*] + [#]

1. Hold down the [3] key until the keypad buzzer sounds. The AWAY indicator will flash to show that the panel is in the Stay Zone programming mode.
2. Press the [NUMBER] corresponding to the zone you wish to be a STAY zone.
3. The relevant zone indicator will come on. (Buzz zones will be shown by flashing indicators. See Section 13. A Buzz zone cannot be selected as a Stay zone; the Buzz status must be cleared first.)
4. Repeat step 2 until all stay zones are selected.
5. Press the [#] key to exit the Stay zone programming mode

To Cancel the Stay Zones [3] + [ZONE NUMBER] + [*] + [#] If an area programmed as a STAY zone will no longer be violated during STAY arming, then the STAY status of such a zone should be canceled. This will allow the system to protect that area during a stay-arm cycle.

1. Hold down the [3] key until the keypad buzzer sounds. The AWAY indicator will flash to show that the panel is in the Stay Zone programming mode.
2. Press the [NUMBER] corresponding to the STAY zone you wish to cancel.
3. The relevant zone indicator will turn off.
4. Repeat step 2 until all stay zones are selected.
5. Press the [#] key to exit the Stay Zone programming mode.

NOTE: The system will automatically exit this mode after 60 seconds.

Buzz Zones

Buzz zones are used when Staying arming. When triggered, buzz zones will cause the keypad buzzer to sound for a period of 30 seconds during which time a valid user code must be entered. If a valid user code is not entered during this period, the system will register an alarm condition. It is advisable to program Buzz zones if you are likely to accidentally trigger these zones or if you have pets. This feature helps prevent unnecessary false alarms.

NOTE: Instant zones, such as panic zones, cannot be selected

To Program Buzz Zones [4] + [ZONE NUMBER] + [*] + [#]

1. Hold down the [4] key until the keypad buzzer sounds. The AWAY indicator will flash to show that the panel is armed in the Buzz zone programming mode.
2. Press the [NUMBER] corresponding to the zone you wish to be a Buzz zone.
3. The lit zone indicator will show the relevant Buzz zone. (Stay zones will be shown by flashing indicators. See Section 12. A Stay zone cannot be selected as a Buzz zone; the Stay status must be cleared first).
4. Repeat step 2 until all the required Buzz zones are programmed.
5. Press the [#] key to exit the buzz programming mode

To Cancel Buzz Zones [4] + [ZONE NUMBER] + [*] + [#]

1. Hold down the [4] key until the keypad buzzer sounds. The AWAY indicator will flash to show that the panel is armed in the Buzz zone programming mode.
2. Press the [NUMBER] corresponding to the BUZZ zone you wish to cancel.
3. The relevant zone indicator will turn off.
4. Repeat step 2 until all buzz zones are canceled.
5. Press the [#] key to exit the buzz zone programming mode.

NOTE: The system will automatically exit this mode after 60 seconds

Chime Zones

The chime mode allows the user to monitor nominated zones while the system is disarmed. The keypad buzzer will sound 5 times when the nominated zone is violated – the siren will NOT sound and no alarm condition will be reported. EXAMPLE: You wish to know when someone enters or exits the front door; the keypad will beep each time the door is opened if that zone is programmed as a chime zone

To Program the Chime Zones [2] + [ZONE NUMBER] + [*] + [#]

1. Hold down the [2] key until the keypad buzzer sounds.
2. The AWAY indicator will flash to show that the panel is in the chime zone programming mode.
3. To program a zone as a chime zone, press the key corresponding to that zone. The zone indicator will come on.
4. Program any other zones you wish to select as chime zones as per step 3.
5. Press the [#] key to exit the chime programming mode

To Cancel the Chime Zones [2] + [ZONE NUMBER] + [*] + [#]

1. Hold down the [2] key until the keypad buzzer sounds.
2. The AWAY indicator will flash to show that the panel is in chime programming mode.
3. To cancel any chime zones, press the key corresponding to that zone. The zone indicator will turn off.

4. Repeat step 3 until all the chime zones are canceled.
5. Press the [#] key to exit the chime programming mode.

NOTE: The system will automatically exit this mode after 60 seconds

Troubleshooting

Trouble Conditions

In the event of a trouble condition, the power indicator will flash. Trouble Condition refers to Low Battery power and/or AC Mains Failure. Check that the plug is in place and switched on. If the power indicator is still flashing once these checks have been done, contact your installer who will then check the battery power. 15.1.1 Viewing Trouble Conditions Hold down the [7] until the beep If the POWER LED is flashing (or if so programmed, the keypad is beeping) hold down the [7] key for one second. The ARMED, AWAY, and READY indicators will start flashing to show that the keypad is in the TROUBLE viewing mode. Refer to the table below to find the significance of each lit zone LED. The system will automatically exit the TROUBLE mode after ten seconds. To clear the trouble condition press [#] within 5 seconds of viewing. To simply cancel the beeping without viewing the trouble conditions, press [#]

Indicator	Trouble Condition
2	Failure to communicate to monitoring company
3	Mains power failure
4	Low battery
5	The Telephone line has been cut or is not present
6	The siren wire has been cut or the fuse has blown
7	Keypad has experienced a tamper
8	Installers code must be entered to clear an alarm condition

Problems when Arming the System If you enter the wrong user code, the keypad will beep three times and the system will not arm. Is the READY Indicator on? If this indicator is not on, one or more zones are violated. A flashing zone indicator shows a violation. Ensure that all monitored doors and windows are closed. Bypassing a violated zone will also create a READY condition. Does the siren sound before you exit? The exit delay may be too short – ask your installer to adjust the exit delay. OR You have not left via a Follower and Entry/Exit zone or have strayed into an Instant zone. Either avoid these zones or ask your installer to change the zone type.

Problems when Arming the System If you enter the wrong user code, the keypad will beep three times and the system will not arm. Is the READY Indicator on? If this indicator is not on, one or more zones are violated. A flashing zone indicator shows a violation. Ensure that all monitored doors and windows are closed. Bypassing a violated zone will also create a READY condition. Does the siren sound before you exit? The exit delay may be too short – ask your installer to adjust the exit delay. OR You have not left via a Follower and Entry/Exit zone or have strayed into an Instant zone. Either avoid these zones or ask your installer to change the zone type.

For Service

Account #:		Telephone	
------------	--	-----------	--

Central Station Information:

Account #:		Telephone	
------------	--	-----------	--

Installer information

Quick Reference User Guide

Arm/Disarm	[#] + [USER CODE]
Quick Away Arm	Hold down [1] for 1 second
Quick Stay Arm	Hold down [5] for 1 second
Quick Stay Arm & Go	Hold down [6] for 1 second
Panic	Hold down [P] for 1 second
Fire	Hold down [F] for 1 second
Medical Emergency	Hold down [M] for 1 second
Alarm Memory	Hold down [0] for 1 second
Change Stay Profile	[MODE] + [9] + [PROFILE NUMBER] + [*]
Bypass a zone	[*] + [ZONE NUMBER]
Program chime zone	Hold down [2] for 1 second + [ZONE NUMBER] + [*]
Program stay zone	Hold down [3] for 1 second + [ZONE NUMBER] + [*]
Program buzz zone	Hold down [4] for 1 second + [ZONE NUMBER] + [*]
View Trouble Status	Hold down [7] for 1 second
Duress	[#] + [DURESS CODE]

Warranty

leap Electronics Holdings (Pty) Ltd guarantees all IDS Control Panels against defective parts and workmanship for 24 months from the date of purchase. leap Electronics Holdings shall, at its option, repair or replace the defective equipment upon the return of such equipment to any In hep Electronics Holdings branch. This warranty applies ONLY to defects in components and workmanship and NOT to damage due to causes beyond the control of Leap Electronics Holdings, such as incorrect voltage, lightning damage, mechanical shock, water damage, fire damage, or damage arising out of abuse and improper application of the equipment.

NOTE: Wherever possible, return only the PCB to Leap Electronics Holdings Service Centres. DO NOT return the metal enclosure. The IDS 805 is a product of IDS (In hep Digital Security) and is manufactured by leap Electronics Holdings (Pty) Ltd

WARNING

For safety reasons, only connect equipment with a telecommunications compliance label. This includes customer equipment previously labeled permitted or certified

Download PDF: [ids 805 Alarm System User Manual](#)