

IDS
HBK Eye Array
Camera



IDS HBK Eye Array Camera User Guide

[Home](#) » [IDS](#) » IDS HBK Eye Array Camera User Guide 

Contents

- [1 IDS HBK Eye Array Camera](#)
- [2 Features](#)
- [3 Specifications](#)
- [4 Download uEye Camera Driver](#)
- [5 Troubleshooting](#)
- [6 Safety](#)
- [7 Documents / Resources](#)
 - [7.1 References](#)

IDS

IDS HBK Eye Array Camera



Features

1. **10GigE Vision Interface:** Offers ultra-fast data transmission with up to 10 times the bandwidth of standard GigE cameras, ensuring high frame rates with minimal latency.
2. **High-Resolution Sensors:** Supports resolutions up to 45 megapixels, ideal for capturing intricate details in industrial settings.
3. **CMOS Technology:** Utilizes advanced CMOS sensors for superior image quality and faster processing.
4. **Active Cooling System:** Ensures optimal performance by managing heat effectively during prolonged use.
5. **Flexible Lens Options:** Compatible with C-mount and TFL mounts, accommodating a variety of high-resolution lenses.
6. **Durable Build:** Designed with industrial-grade robustness for challenging environments, compliant with GenICam standards.
7. **Wide Compatibility:** Seamlessly integrates into existing GigE Vision network structures for versatile deployment.

Specifications

- **Data Interface:** 10GigE Ethernet
- **Sensor Type:** CMOS with support for large-format sensors
- **Resolution Range:** Up to 45 MP
- **Cooling:** Optional active cooling for enhanced thermal management
- **Mount Types:** C-Mount and TFL Mount options
- **Applications:** Machine vision, automated inspection, high-speed monitoring, and more.

Download uEye Camera Driver

- uEye cameras are supplied with Brüel & Kjær array systems. This page provides you with the relevant camera drivers and an [installation manual](#).
- This camera driver (4.96.1) is applicable with PULSE 27.1 or later.

Version	Runs on	Language	Release Date
4.96.1	64 bit	English	April 2022

Troubleshooting

If several versions of the uEye driver have been installed on the same computer or by upgrading to a newer driver, there might not be a camera image in BK Connect Array Analysis. Please follow this [guide](#) to solve the problem.

Tool needed to clean computer for [old uEye drivers](#).

Older drivers

This camera driver (4.91.1) is applicable with PULSE 23-27.

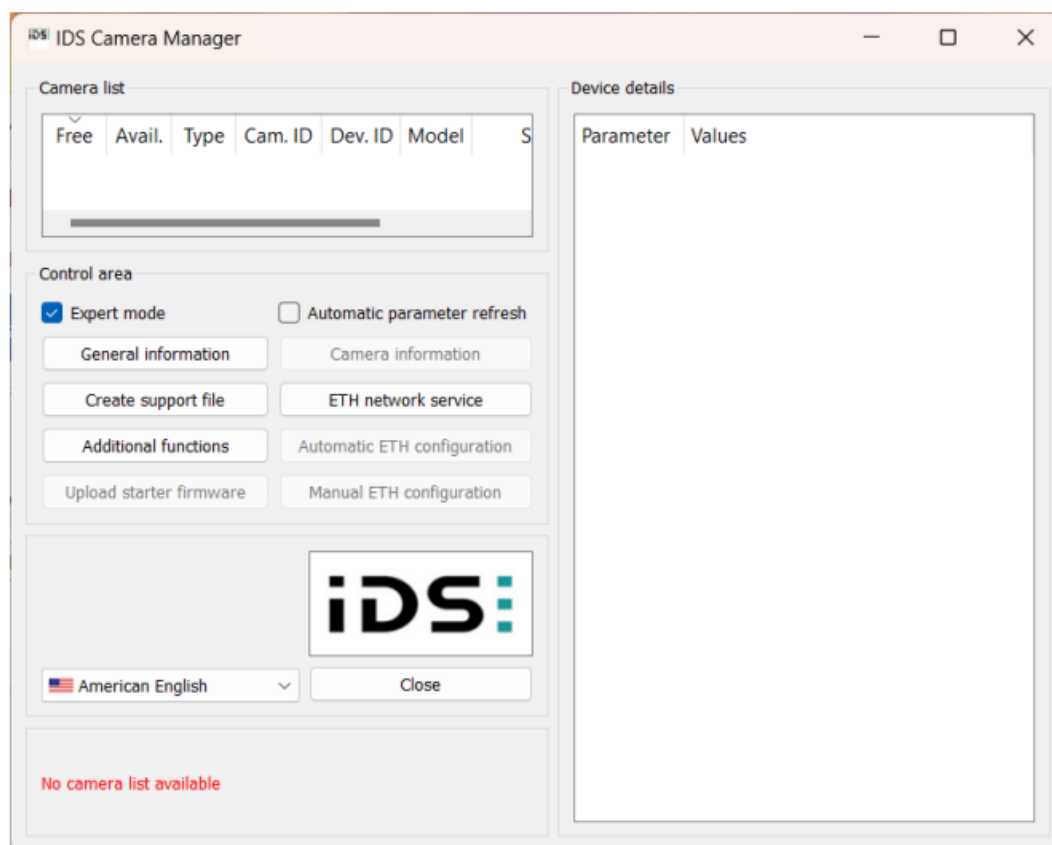
Version	Runs on	Language	Release Date
4.91.1	32-bit	English	2019-06-19
	64-bit	English	2019-06-19

This camera driver (4.70) is applicable with PULSE 20-22.

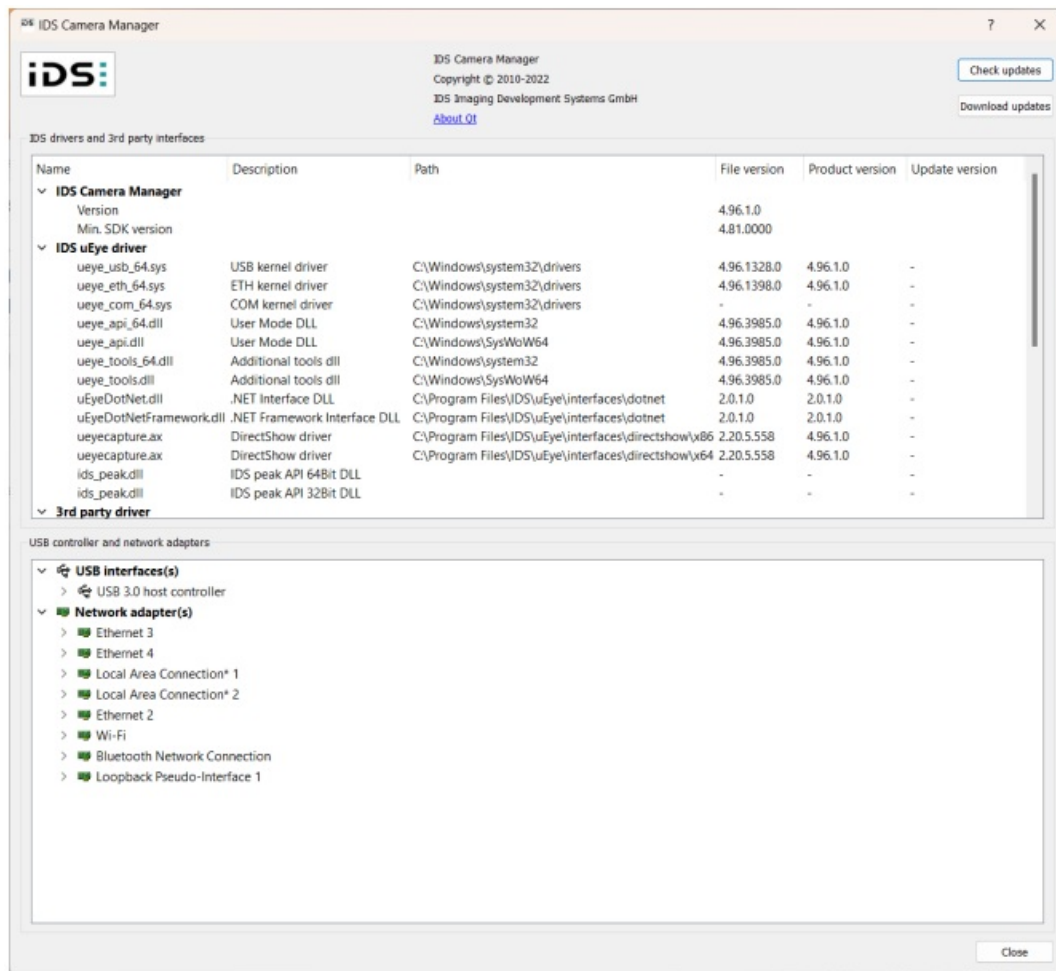
Version	Runs on	Language	Release Date
4.70	32-bit	English	2015-10-26
	64-bit	English	2015-10-26

IDS uEye driver problems and solutions

- Run “IDS Camera Manager” (found in “C:\Program Files\IDS\uEye\Program\idscameramanager.exe” or on some installations in “C:\Windows\System32\idscameramanager.exe”)



- Press “General information” to see driver information.




- Check that IDS uEye driver file version originates from same driver.
- If there is a mix of versions please uninstall the driver and restart the computer.
- Then run uEyeBatchInstall.exe and select option “4” to completely uninstall drivers and remove any
- IDS uEye registry settings.
- Restart the computer.
- Now the latest uEye driver can be installed and versions can be checked in the IDS Camera Manager.
- This should solve problems seeing the camera image in BK Connect Array Analysis

Safety

The IDS HBK Eye Array Camera includes advanced safety features to ensure secure and reliable operation in industrial settings. Its design incorporates the following key safety measures:

1. **Overheating Protection:** Equipped with active cooling plates, the camera prevents overheating during prolonged or high-speed operations, ensuring stability and safety.
2. **Power Surge Management:** Designed to handle electrical inconsistencies, such as voltage surges, safeguarding the camera and connected systems.
3. **Compliance with Industrial Standards:** The camera adheres to GenICam and GigE Vision standards, ensuring compatibility and safe integration into industrial automation systems.
4. **Durable Construction:** Its rugged housing protects against physical impacts and environmental conditions, including dust and vibrations common in factory environments.
5. **Error Detection and Recovery:** Integrated system diagnostics identify and recover from operational faults, minimizing risks during use.

Documents / Resources

	<p>IDS HBK Eye Array Camera [pdf] User Guide</p> <p>HBK Eye Array Camera, HBK, Eye Array Camera, Array Camera, Camera</p>
---	---

References

- [User Manual](#)

[Manuals+](#), [Privacy Policy](#)

This website is an independent publication and is neither affiliated with nor endorsed by any of the trademark owners. The "Bluetooth®" word mark and logos are registered trademarks owned by Bluetooth SIG, Inc. The "Wi-Fi®" word mark and logos are registered trademarks owned by the Wi-Fi Alliance. Any use of these marks on this website does not imply any affiliation with or endorsement.