



IDS AM-800480N6TZQW-T06H LCD Touch Screen User Guide

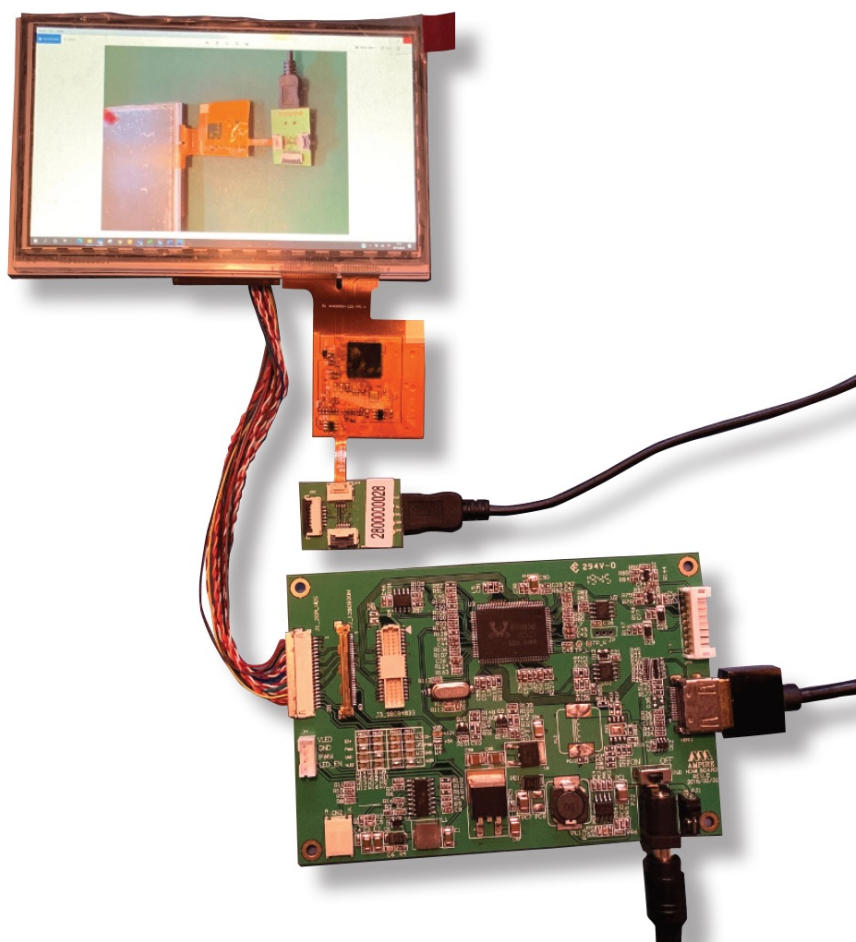
[Home](#) » [IDS](#) » IDS AM-800480N6TZQW-T06H LCD Touch Screen User Guide 

IDS AM-800480N6TZQW-T06H LCD Touch
Screen User Guide



Quick Start Guide

AM-800480N6TZQW-T06H

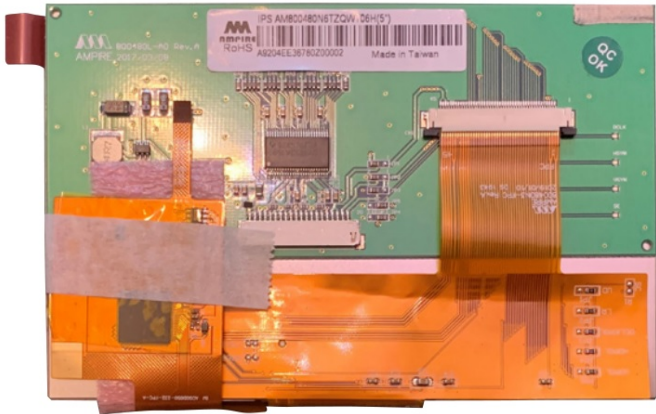


Contents

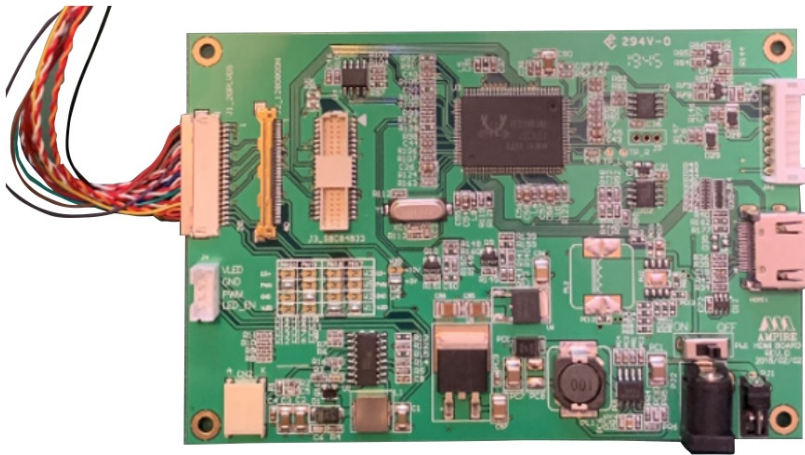
- 1 KIT CONTENTS
- 2 REQUIRED PARTS NOT SUPPLIED IN THE KIT
- 3 PART 1: CONNECTING THE DRIVER CARD TO THE DISPLAY
- 4 CONNECTING THE DRIVER CARD TO THE POWER SUPPLY AND HDMI SOURCE
- 5 PART 2: CONNECTING THE TOUCH PANEL
- 6 FURTHER INFORMATION
- 7 ABOUT IDS
- 8 INTELLIGENT GROUP SOLUTIONS DIVISIONS
- 9 Documents / Resources
 - 9.1 References
- 10 Related Posts

KIT CONTENTS

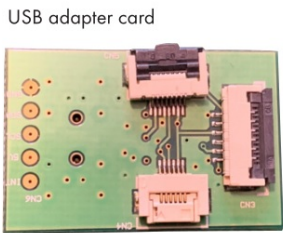
Item	Description	Qty
1	Display with touch panel	1
2	Driver card	1
3	USB adapter card	1



Display with touch panel



Driver card



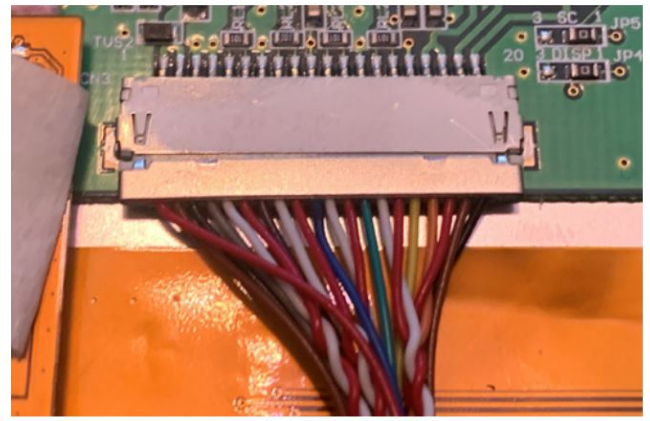
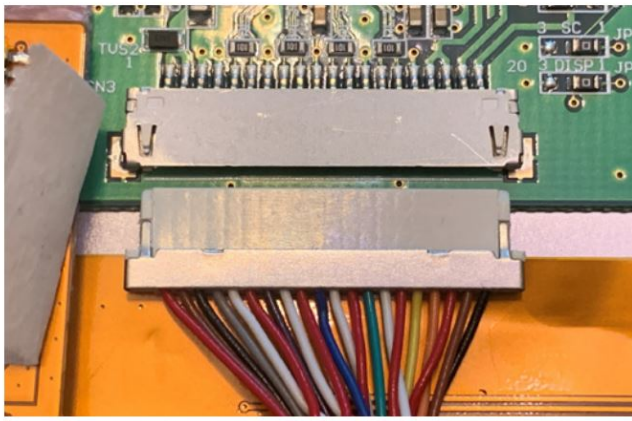
USB adapter card

REQUIRED PARTS NOT SUPPLIED IN THE KIT

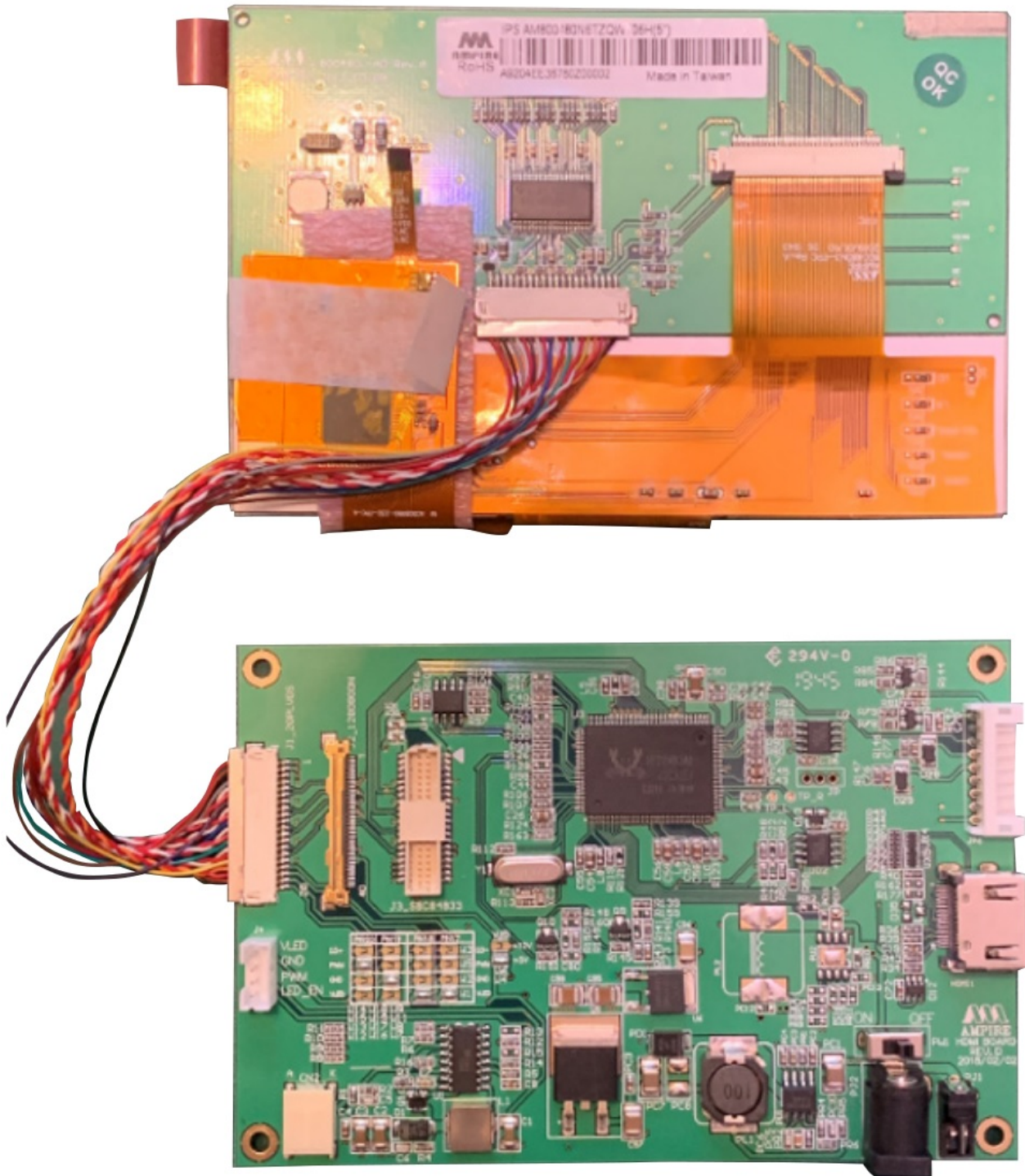
Item	Description	RS Part Number
1	12V 2A Power supply with 2.1 mm x 5.5mm DC Jack	144-0971
2	Generic USB mini lead	193-2871

PART 1: CONNECTING THE DRIVER CARD TO THE DISPLAY

Connect the LVDS connector from the driver card to the back of the LCD.
Take care to line up the pins and use the correct orientation as per the picture below.



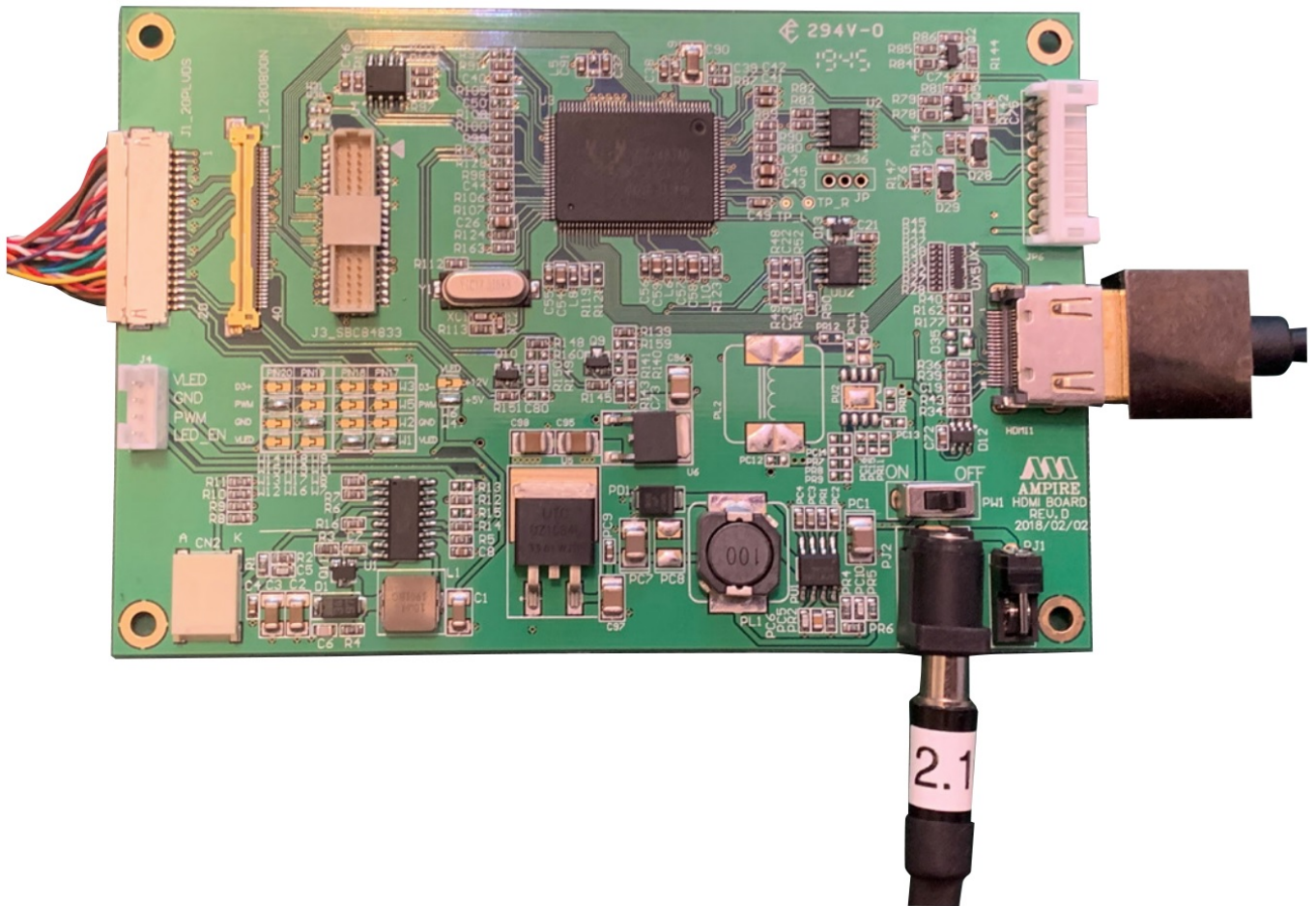
It should look like this when the connector is correctly installed.



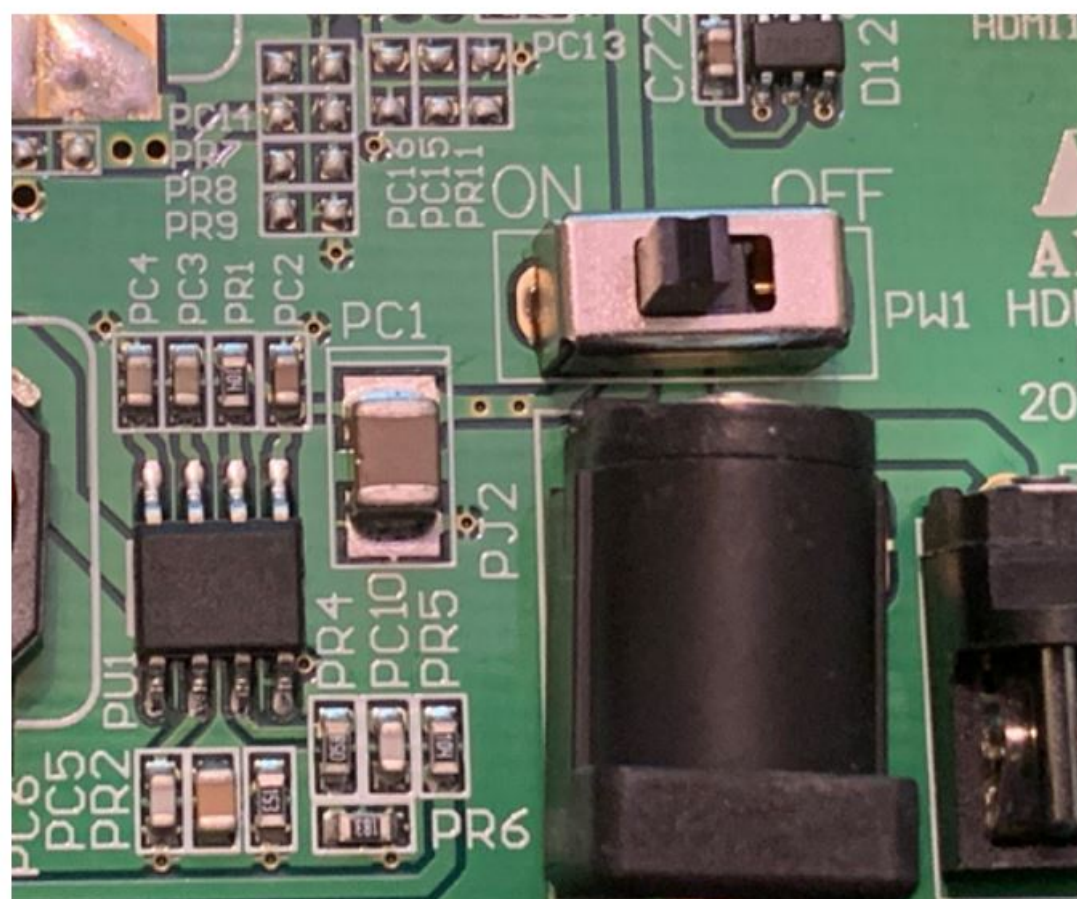
CONNECTING THE DRIVER CARD TO THE POWER SUPPLY AND HDMI SOURCE

Connect the power connector to the 12V DC power supply using a 2.1mm connector with centre positive and barrel negative.

Connect the HDMI connector to your source.



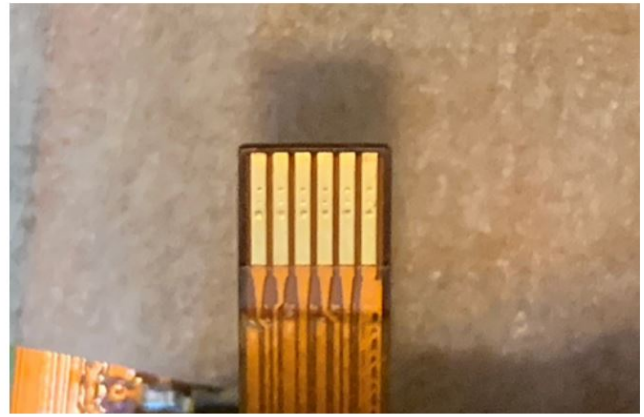
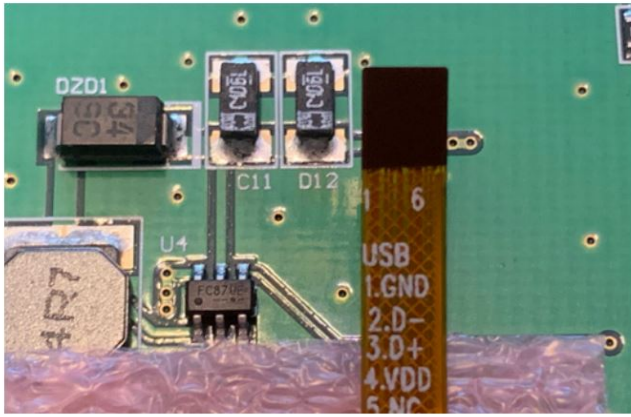
Turn the power switch to the ON position.





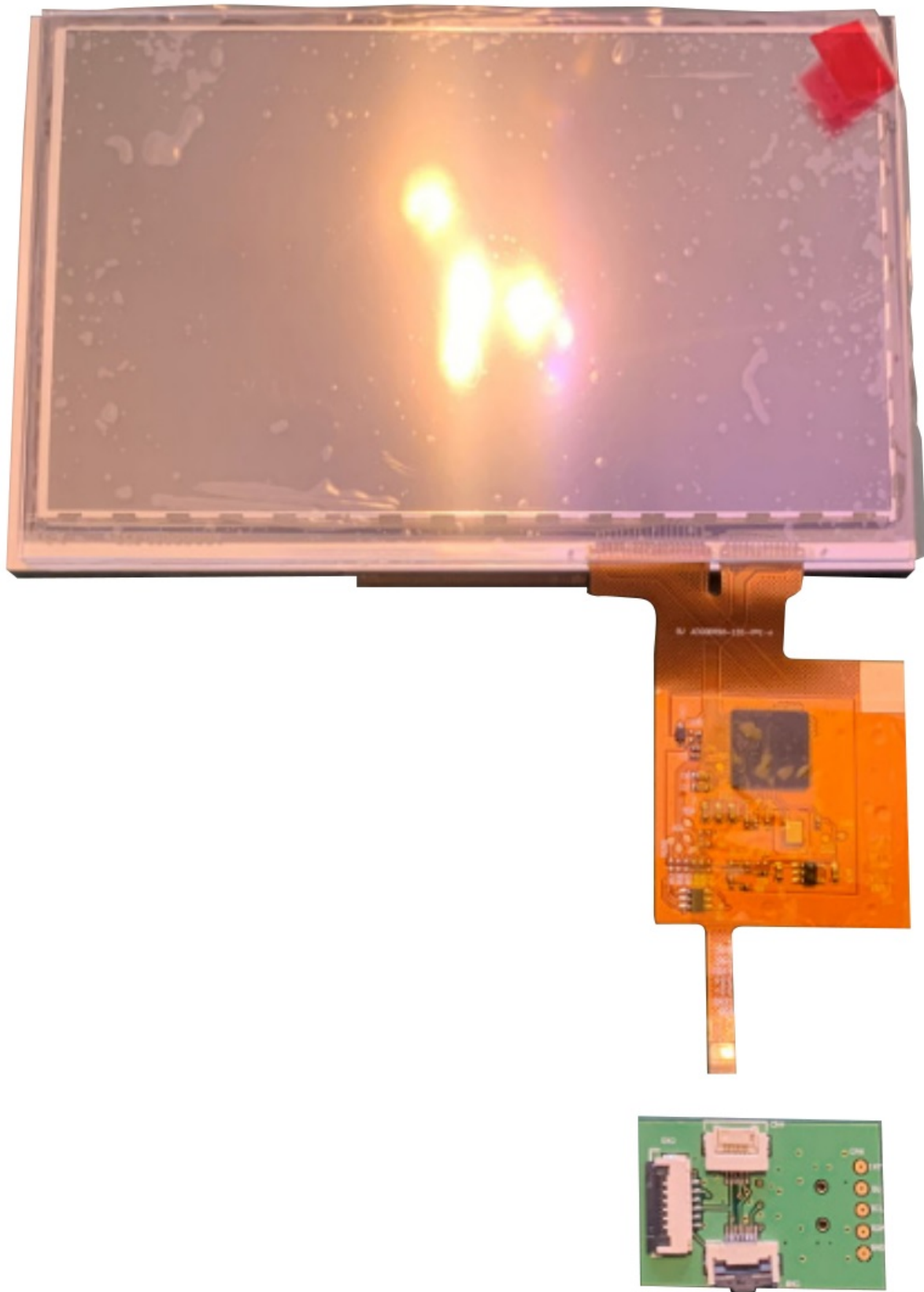
PART 2: CONNECTING THE TOUCH PANEL

The display has an FFC tail with the USB connections.

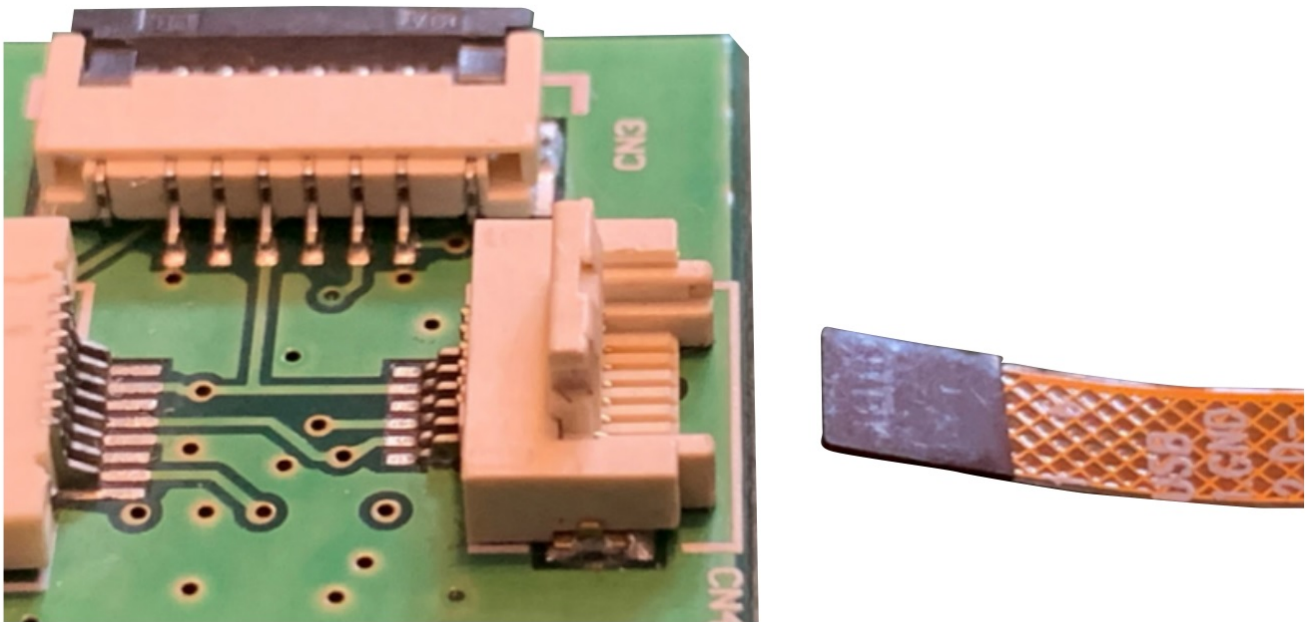


Remove any packing foam and tape to release the touch control board from the back of the display.

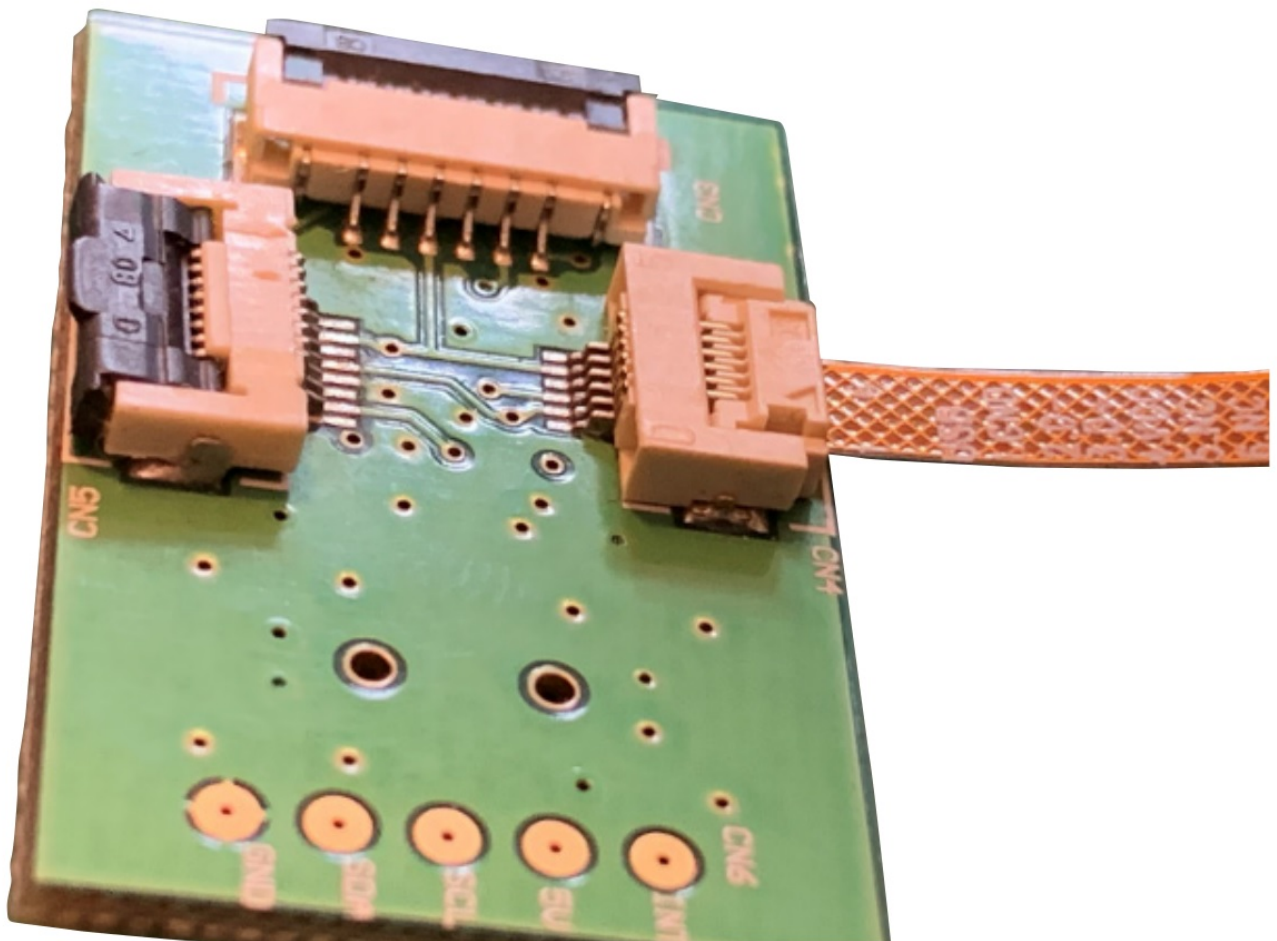
Place the display face up and line up the small USB connector PCB.



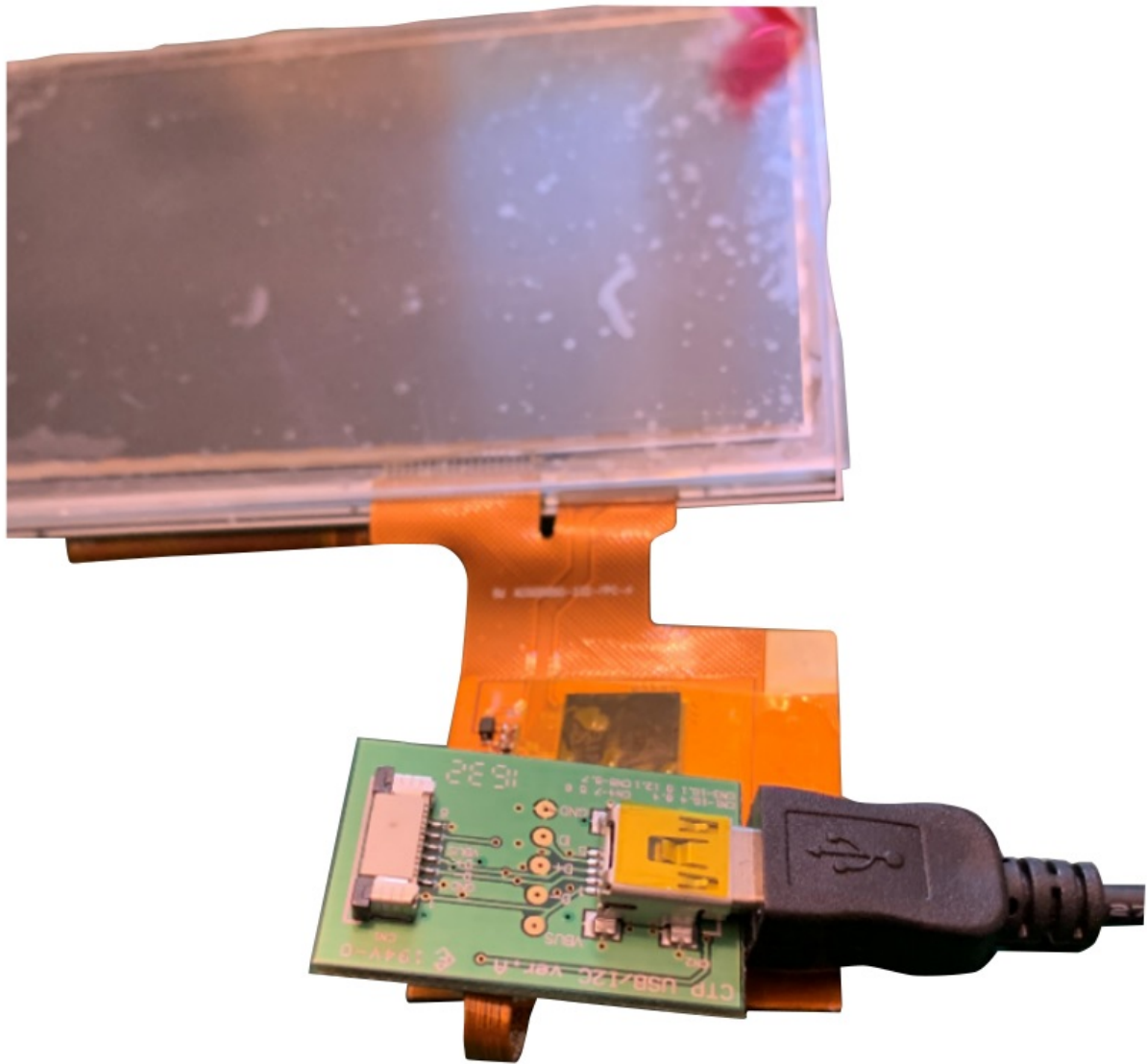
Locate CN4 on the PCB and carefully lift up the flap.



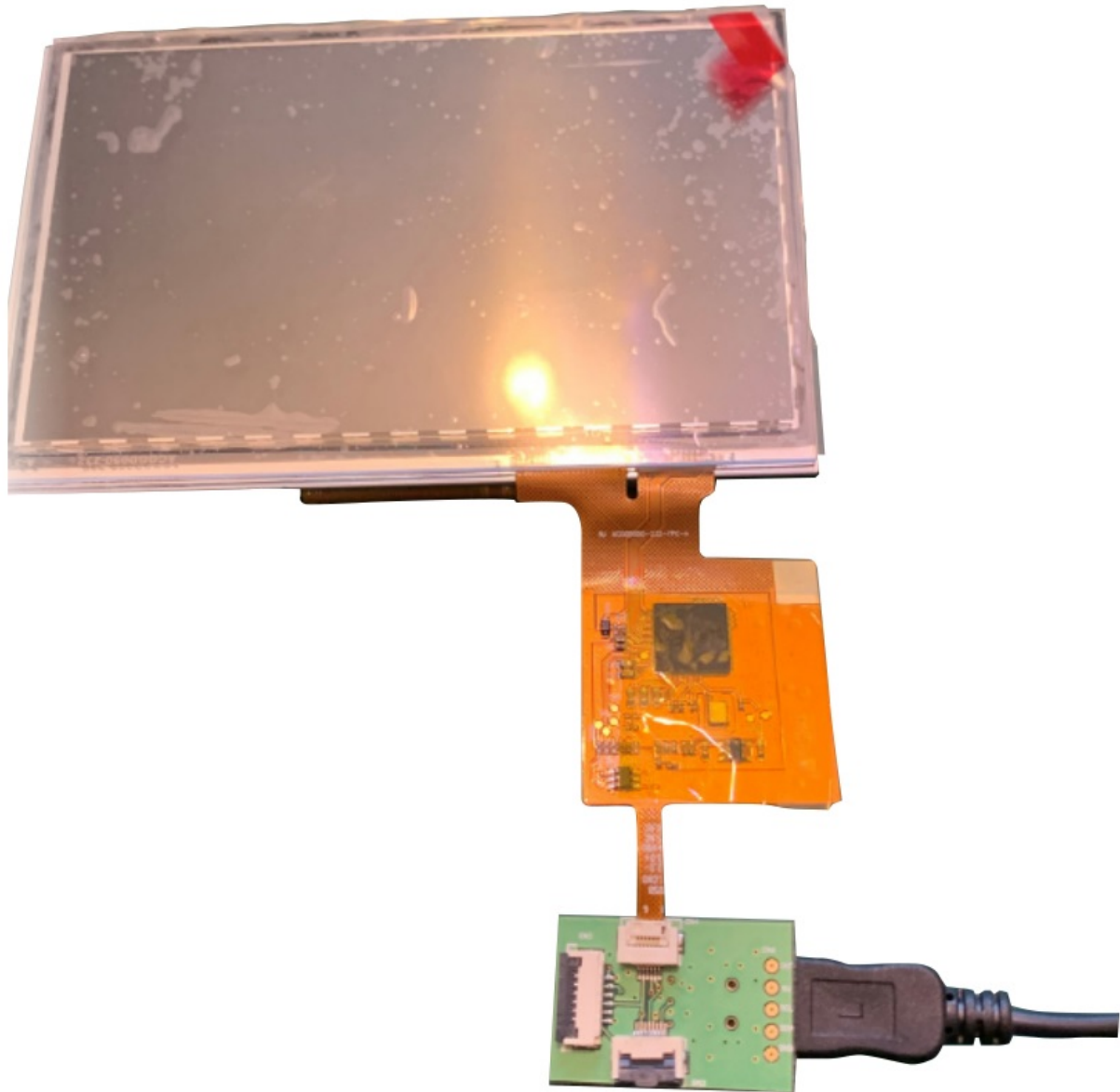
Note the orientation of the FFC and the PCB, it must be connected the correct way round or damage may occur. Push the FFC tail into the connector far enough so that the dark strengthening section is all the way in, and close the flap.



Turn the PCB over and connect a USB Mini lead.



The touch panel can now be connected to a PC and will be automatically installed by MS Windows10.



The FFC tail and controller are very fragile and easily torn. It is recommended that once connected to the breakout board everything is secured to the back of the display using tape. This will reduce any strain on the FPC material.

FURTHER INFORMATION

The values contained in this data sheet can change due to technical innovation. Any such changes will be made without separate notification.

If you require further assistance or have a specific or custom enquiry, please contact the IDS team via email or phone. Alternatively please visit our website for more product info and to see our full range.



Unit 2, Berkshire Business Centre,
Berkshire Drive, Thatcham,
Berkshire, RG19 4EW
+44 (0)1635 294600

info@i-lcd.com
www.i-lcd.com

ABOUT IDS

Intelligent Display Solutions was established in 2001 by display industry experts. We have extensive knowledge of both the technical and user interface approaches to designing displays for various applications, using LCD, TFT and OLED technologies. We work with our customers to develop new and innovative displays – some award-winning – to enhance their products.


IDS is a division of Intelligent Group Solutions Ltd (IGS) – a well-established, respected, industry-leading Optoelectronics solutions provider. Much of IGS' business comes from providing semi-custom or custom products, both in component and sub-assembly form. We offer design support and prototyping within the European marketplace, with the capability to deliver production displays to wherever in the world the customer's manufacturing or assembly is being undertaken.

INTELLIGENT GROUP SOLUTIONS DIVISIONS



+44 (0)1635 294600 | info@i-lcd.com | www.i-lcd.com
Intelligent Display Solutions, Unit 2, Berkshire Business Centre,

Documents / Resources

	<p>IDS AM-800480N6TZQW-T06H LCD Touch Screen [pdf] User Guide</p> <p>AM-800480N6TZQW-T06H LCD Touch Screen, AM-800480N6TZQW-T06H, LCD Touch Screen</p>
---	--

References

- [lcd.com](#)
- [IDS - Intelligent Display Solutions](#)