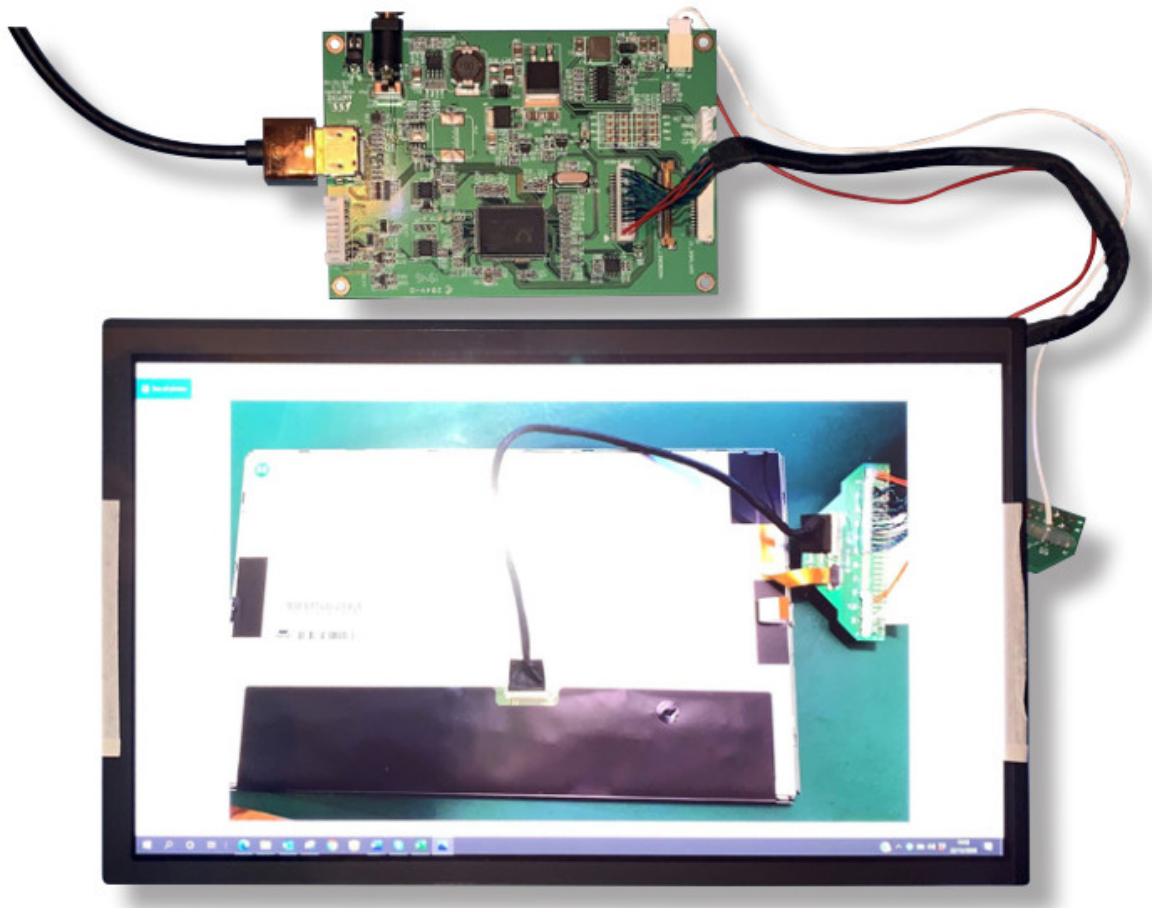


IDS AMAM-19201080-H0H Display Kit User Guide

[Home](#) » [IDS](#) » IDS AMAM-19201080-H0H Display Kit User Guide



Quick Start Guide
AM-19201080KTZQW-H0H



+44 (0)1635 294600 | info@i-lcd.com | www.i-lcd.com
 Intelligent Display Solutions, Unit 2, Berkshire Business Centre,
 Berkshire Drive, Thatcham, Berkshire, RG19 4EW
 A division of Intelligent Group Solutions Ltd

Contents [[hide](#)]

1 KIT CONTENTS

2 REQUIRED PARTS NOT SUPPLIED IN THE KIT

3 PART 1: CONNECTING THE DRIVER CARD TO THE DISPLAY

4 CONNECT THE DRIVER CARD TO A POWER SUPPLY AND HDMI SOURCE

5 FURTHER INFORMATION

6 ABOUT IDS

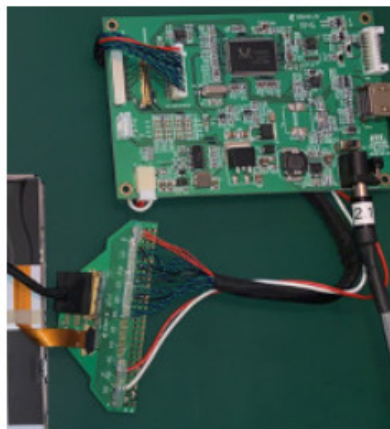
7 INTELLIGENT GROUP SOLUTIONS DIVISIONS

8 Documents / Resources

9 Related Posts

KIT CONTENTS

Item	Description	Qty
1	Display with touch panel	1
2	Driver card with LVDS PCB	1

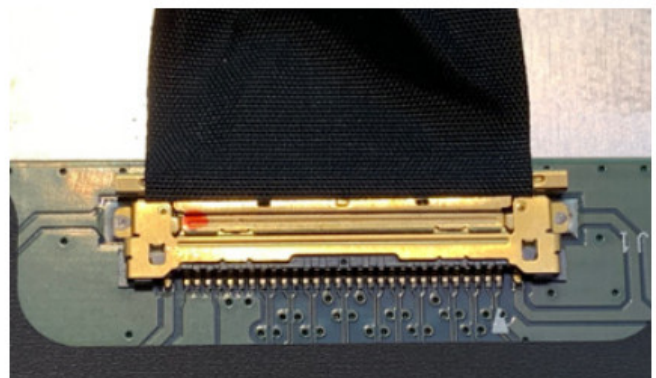
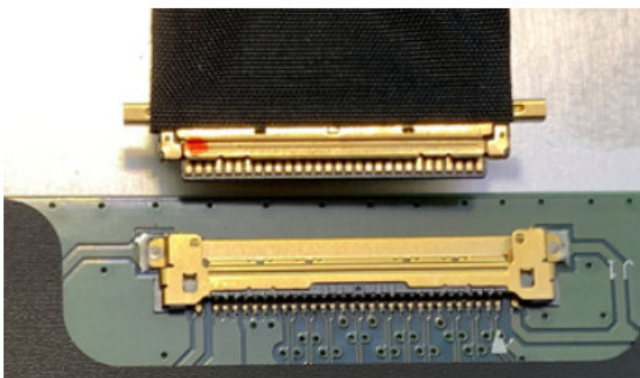


REQUIRED PARTS NOT SUPPLIED IN THE KIT

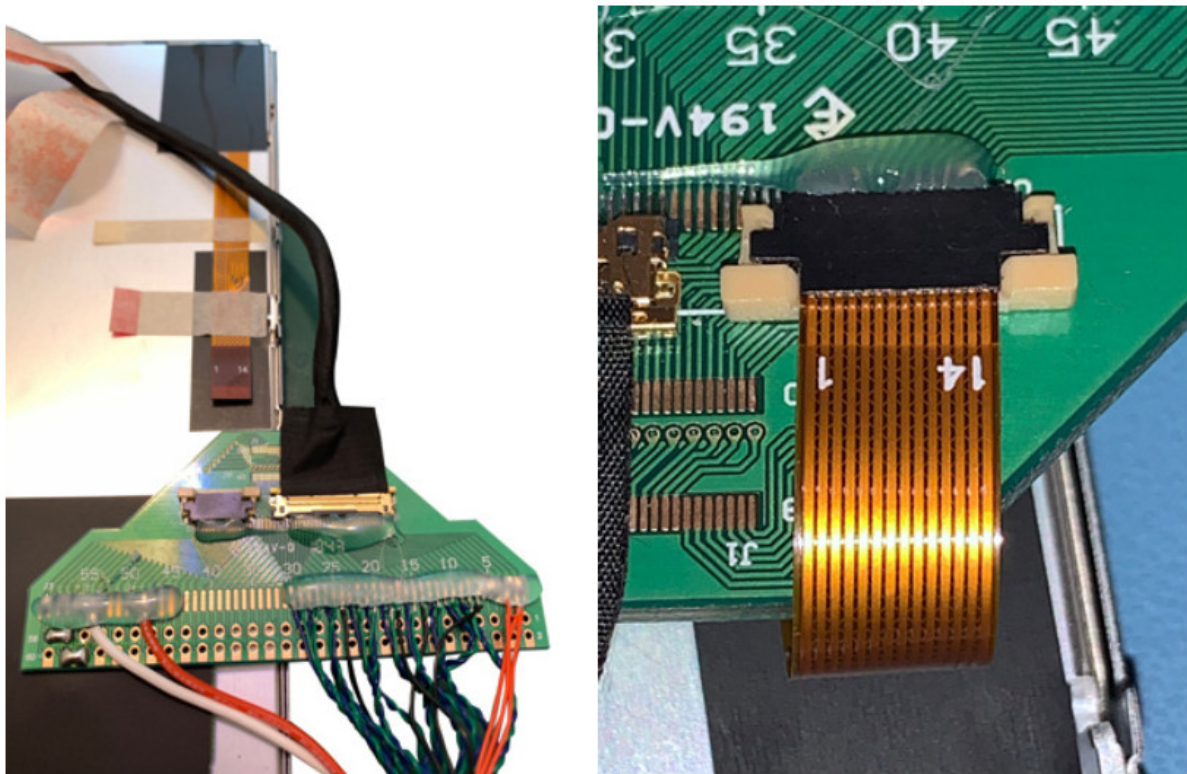
Item	Description	RS Part Number
1	12V 2A Power supply with 2.1mm x 5.5mm DC Jack	144-0971

PART 1: CONNECTING THE DRIVER CARD TO THE DISPLAY

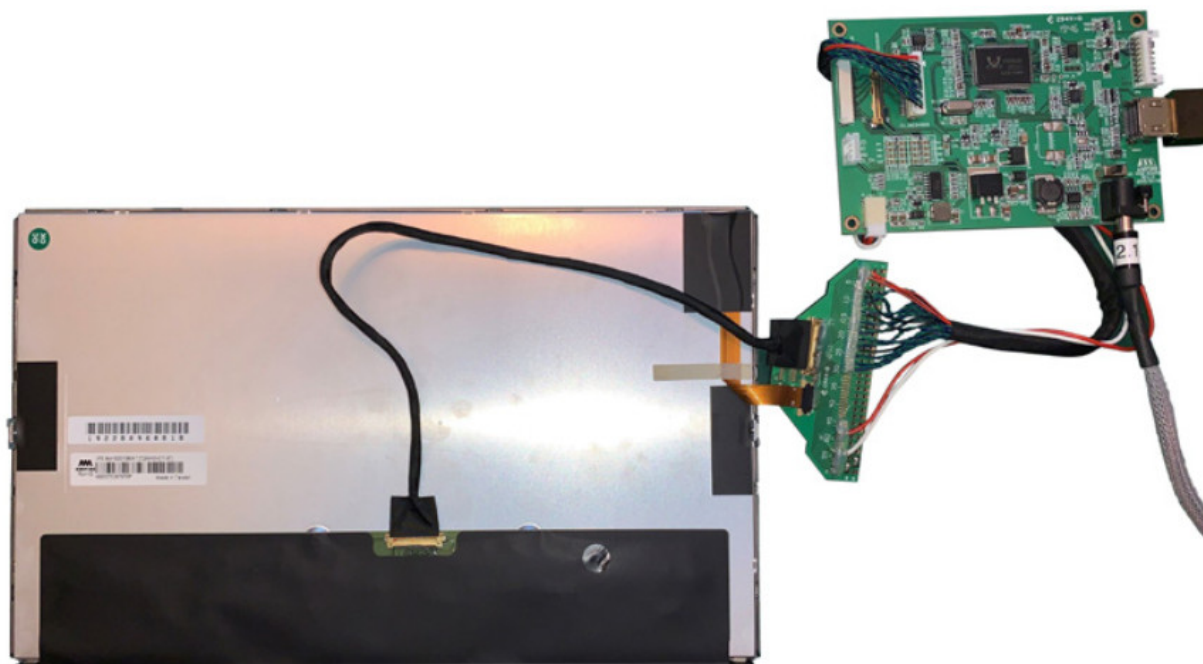
Connect the LVDS connector from the driver card to the back of the LCD. Take care to line up the pins and use the correct orientation as per the picture below.



The connection should look like this when the connector is connected correctly.

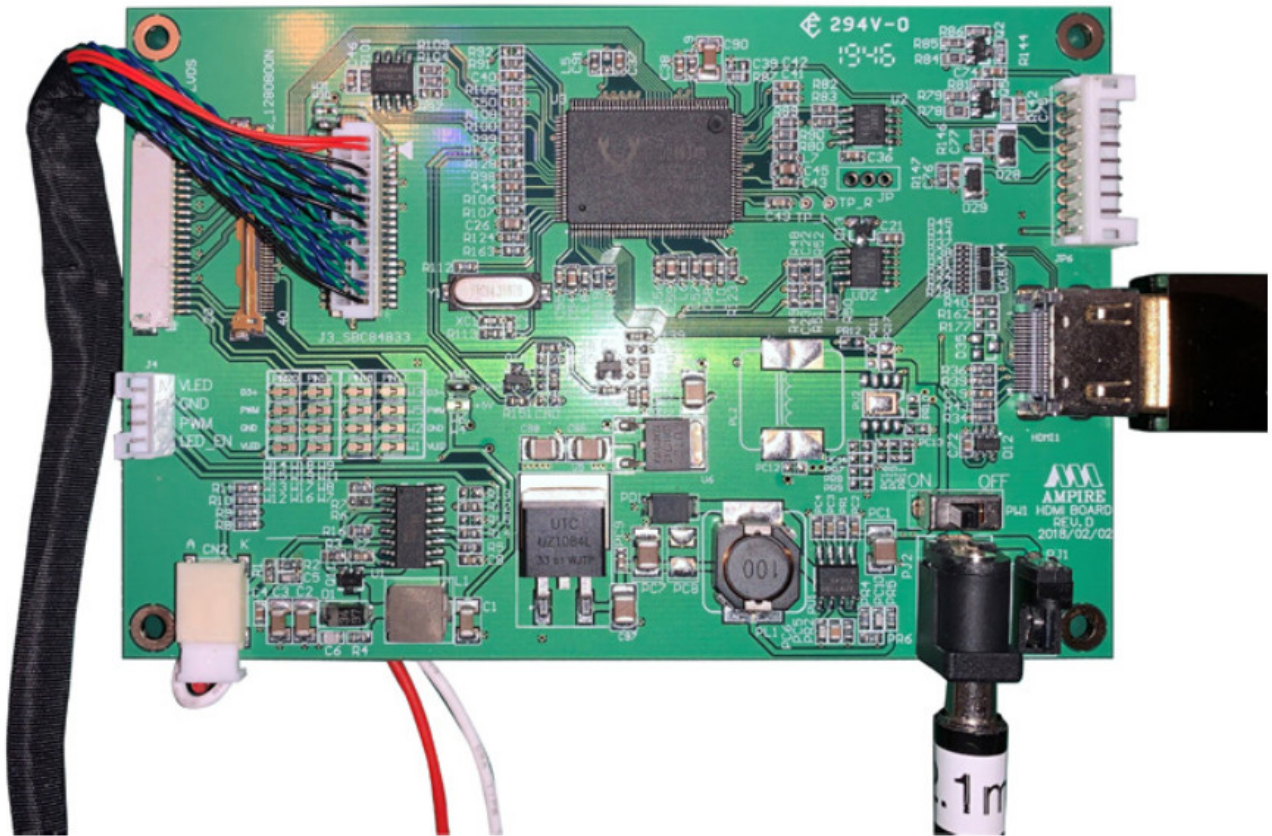


The connections should look like this when the connectors are connected correctly

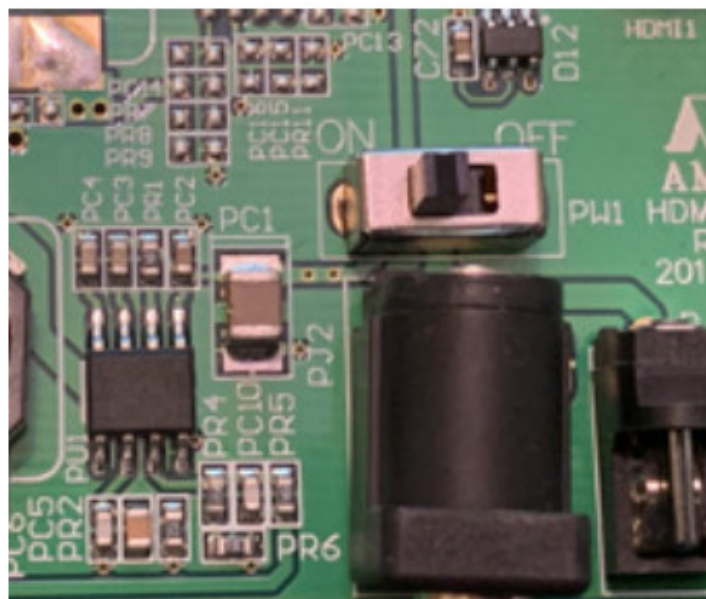


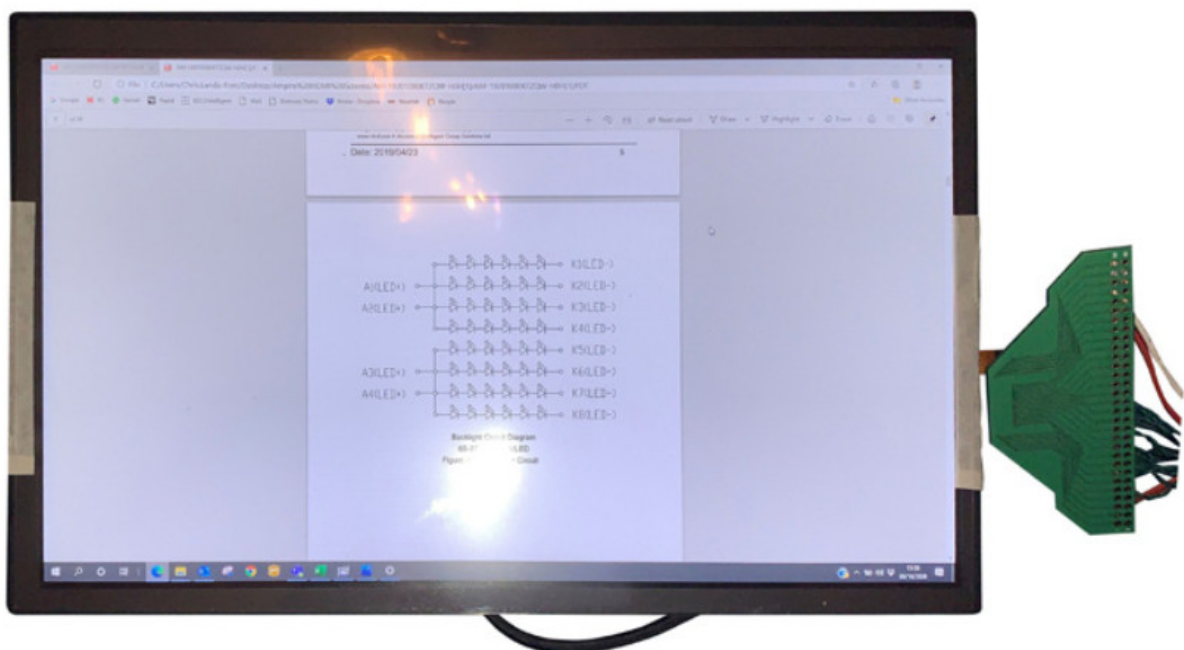
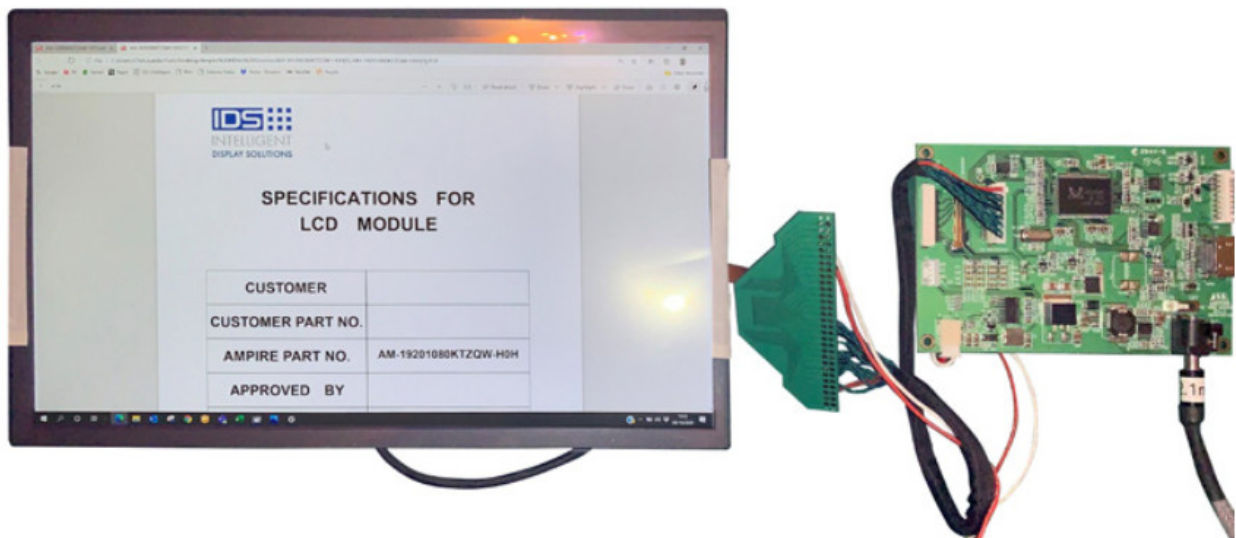
CONNECT THE DRIVER CARD TO A POWER SUPPLY AND HDMI SOURCE

Connect the power connector to the 12V DC power supply using a 2.1mm connector with center positive and barrel negative Connect the HDMI connector to your source.



Turn the power switch to the ON position





The connections are very fragile and easily torn. It is recommended that all connections are taped and all loose parts are insulated and taped to the rear of the display once the connections have been completed.

FURTHER INFORMATION

The values contained in this data sheet can change due to technical innovation. Any such changes will be made without separate notification.

If you require further assistance or have a specific or custom inquiry, please contact the IDS team via email or phone. Alternatively please visit our website for more product info and to see our full range.



Berkshire Drive, Thatcham,
Berkshire, RG19 4EW
+44 (0)1635 294600
info@i-lcd.com
www.i-lcd.com

ABOUT IDS

Intelligent Display Solutions was established in 2001 by display industry experts. We have extensive knowledge of both the technical and user interface approaches to designing displays for various applications, using LCD, TFT, and OLED technologies. We work with our customers to develop new and innovative displays – some award-winning – to enhance their products.


IDS is a division of Intelligent Group Solutions Ltd (IGS) – a well-established, respected, industry-leading Optoelectronics solutions provider. Much of IGS' business comes from providing semi-custom or custom products, both in component and sub-assembly form. We offer design support and prototyping within the European marketplace, with the capability to deliver production displays to wherever in the world the customer's manufacturing or assembly is being undertaken.

INTELLIGENT GROUP SOLUTIONS DIVISIONS



+44 (0)1635 294600 | info@i-lcd.com | www.i-lcd.com
Intelligent Display Solutions, Unit 2, Berkshire Business Centre,
Berkshire Drive, Thatcham, Berkshire, RG19 4EW
A division of Intelligent Group Solutions Ltd

Documents / Resources

	<p>IDS AM-19201080-H0H Display Kit [pdf] User Guide AM-19201080-H0H, Display Kit</p>
---	--