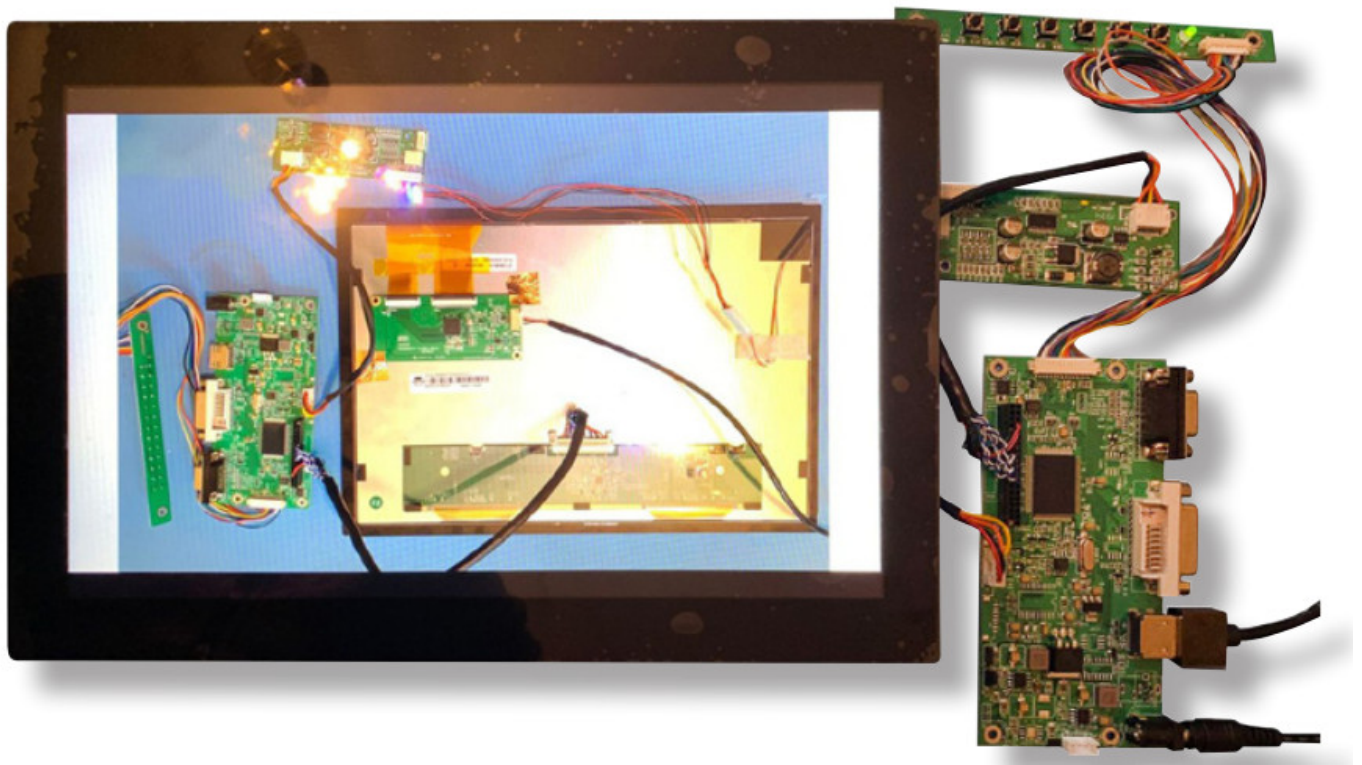


IDS AM-1280800Q7TZQW-T07H LCD Module Touch Screen User Guide

[Home](#) » [IDS](#) » IDS AM-1280800Q7TZQW-T07H LCD Module Touch Screen User Guide 



Quick Start Guide
AM-1280800Q7TZQW-T07H



+44 (0)1635 294600 | info@i-lcd.com | www.i-lcd.com
 Intelligent Display Solutions, Unit 2, Berkshire Business Centre,
 Berkshire Drive, Thatcham, Berkshire, RG19 4EW
 A division of Intelligent Group Solutions Ltd

Contents

1 KIT CONTENTS

2 REQUIRED PARTS NOT SUPPLIED IN THE KIT

3 PART 1: CONNECTING THE DRIVER CARD TO THE DISPLAY

4 CONNECT THE DRIVER CARD TO A POWER SUPPLY AND HDMI SOURCE

5 CONNECT THE DRIVER CARD TO A POWER SUPPLY AND HDMI SOURCE

6 PART 2: CONNECTING THE TOUCH PANEL

7 FURTHER INFORMATION

8 ABOUT IDS

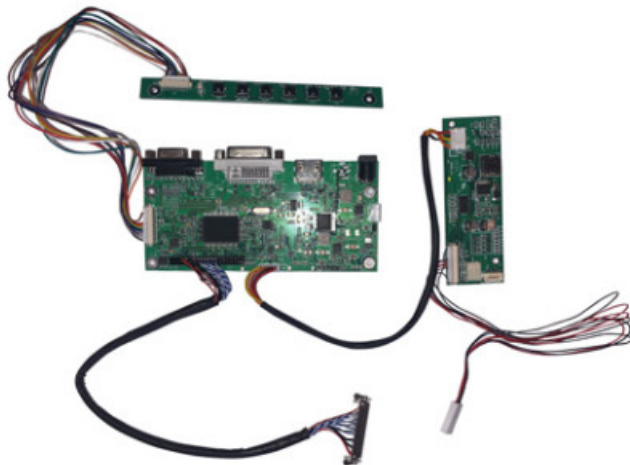
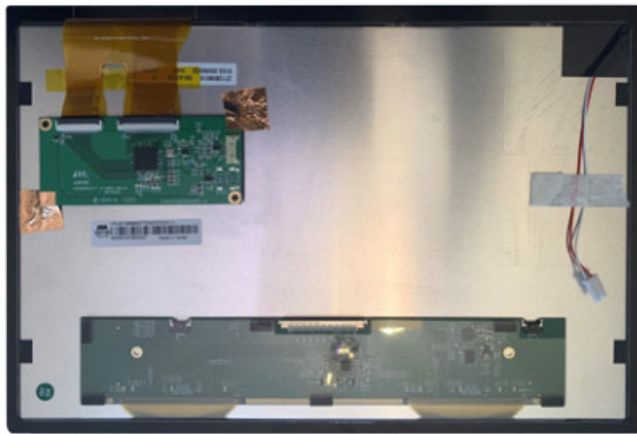
9 INTELLIGENT GROUP SOLUTIONS DIVISIONS

10 Documents / Resources

11 Related Posts

KIT CONTENTS

Item	Description	
1	Display with touch panel	
2	Driver card with Backlight PCB and control pad	
3	USB adapter cable from IDS Ltd	

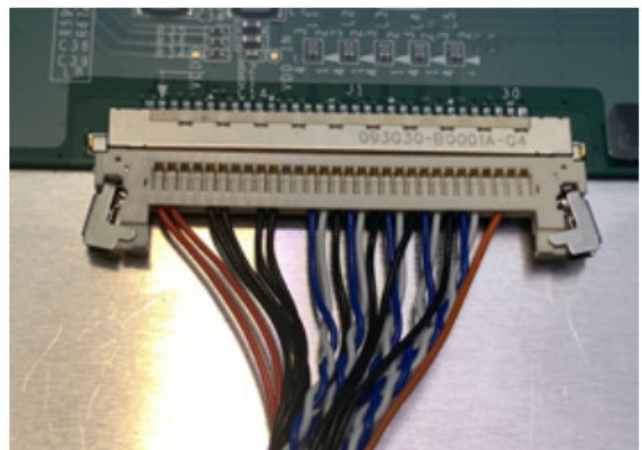
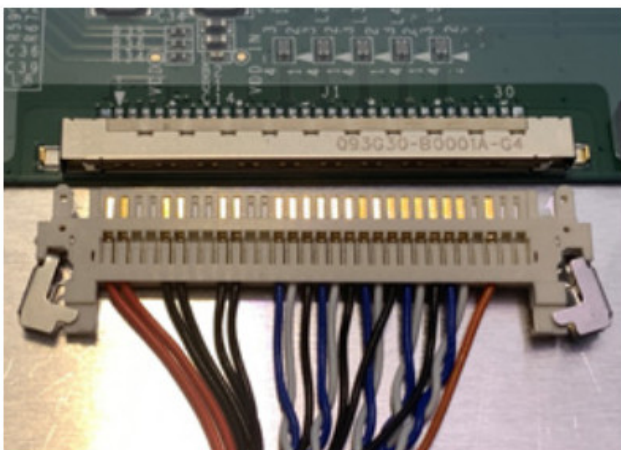


REQUIRED PARTS NOT SUPPLIED IN THE KIT

Item	Description
1	12V 2A Power supply with 2.1mm x 5.5mm DC Jack
2	HDMI cable

PART 1: CONNECTING THE DRIVER CARD TO THE DISPLAY

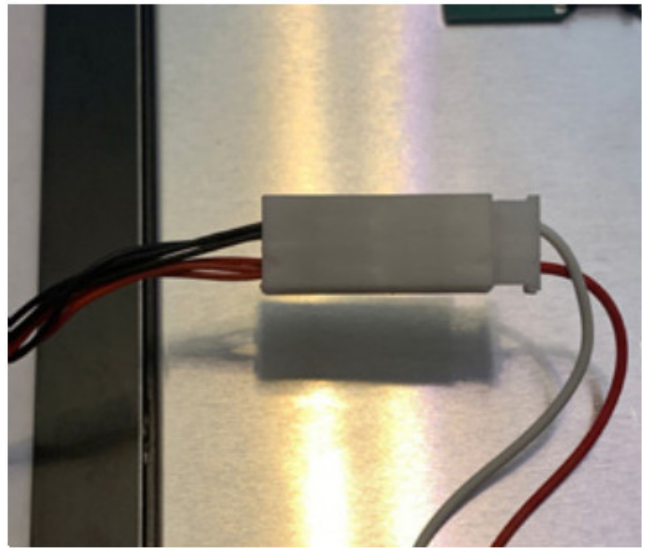
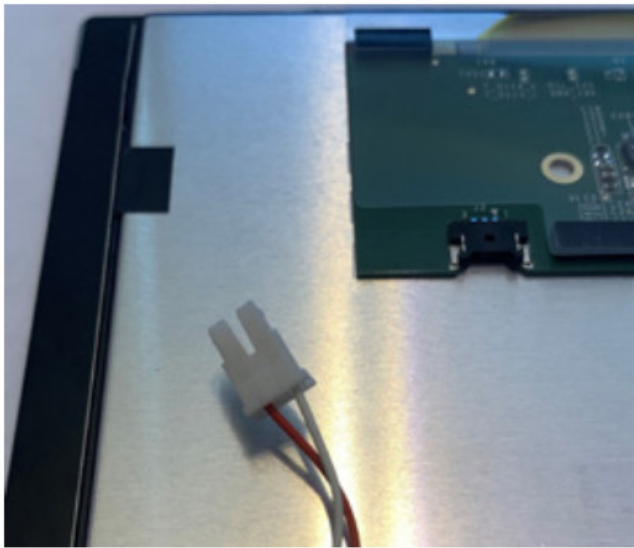
Connect the LVDS connector from the driver card to the back of the LCD.
Take care to line up the pins and use the correct orientation as per the picture below



The connection should look like this when the connector is fitted correctly

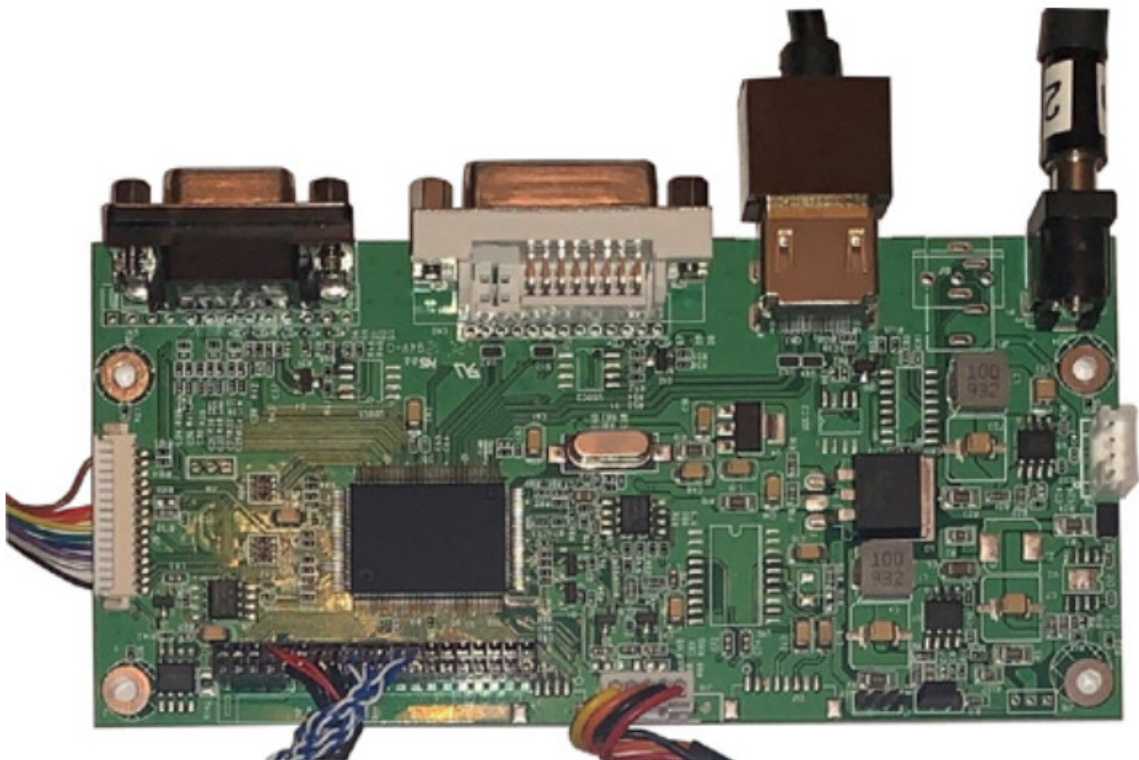
Connect the backlight connector.

This is the red and white connector on the display and the red and black connector on the driver board.

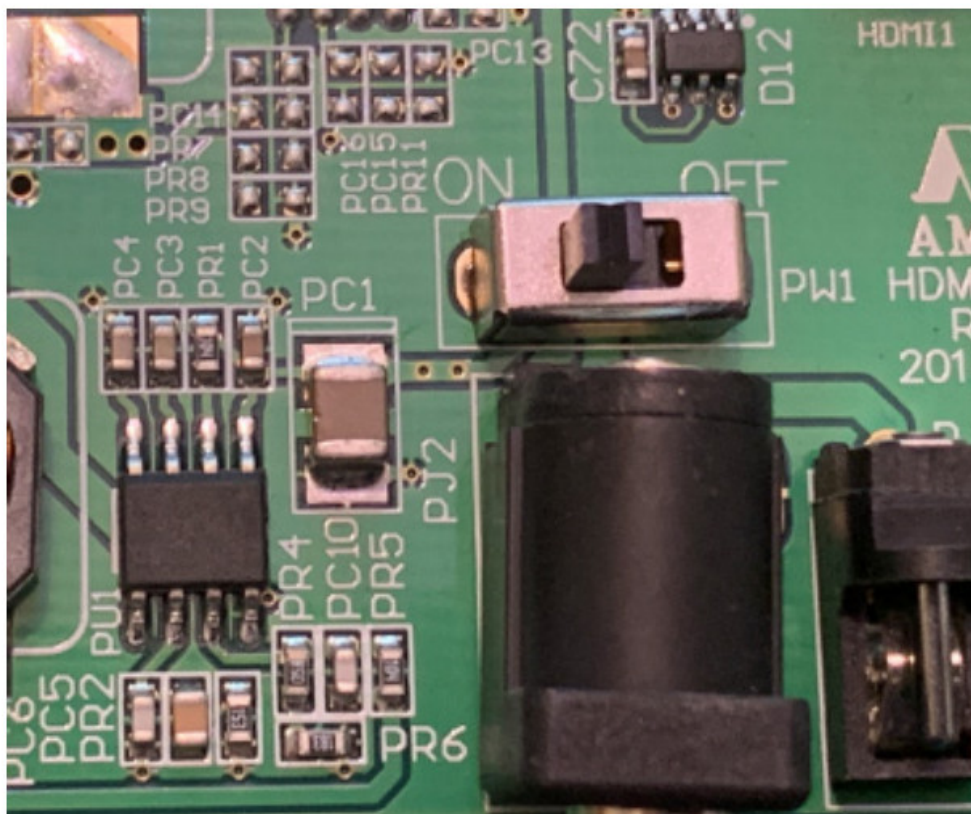


CONNECT THE DRIVER CARD TO A POWER SUPPLY AND HDMI SOURCE

The display has a connector with the USB Connections



Turn the power switch to the ON position

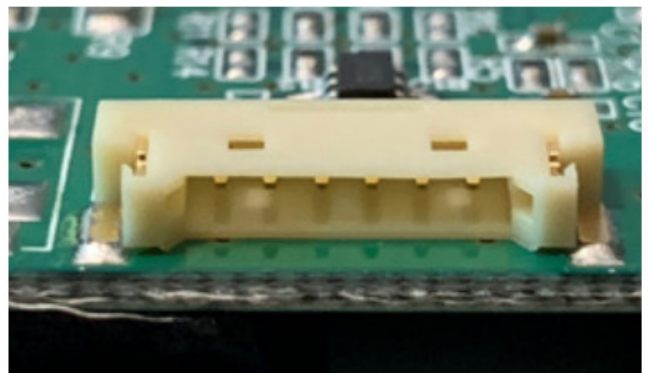


CONNECT THE DRIVER CARD TO A POWER SUPPLY AND HDMI SOURCE

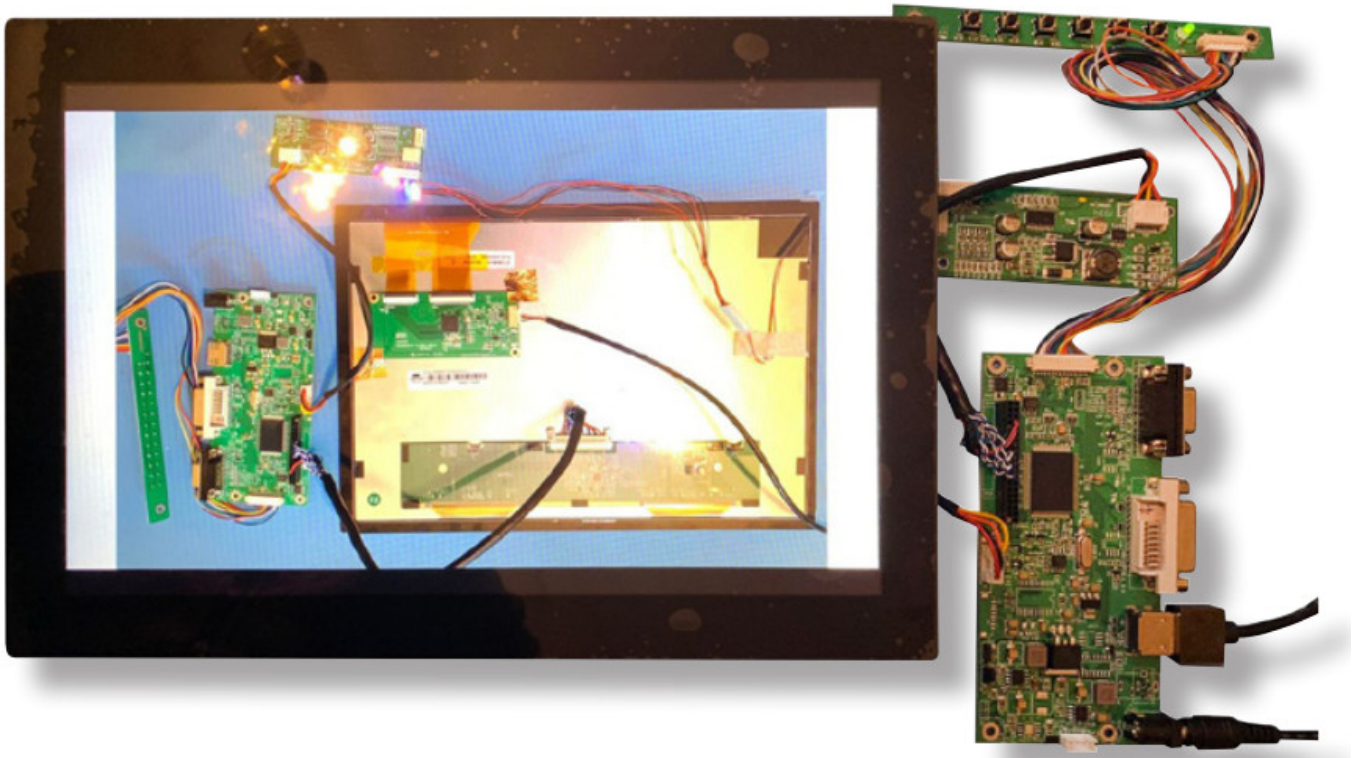
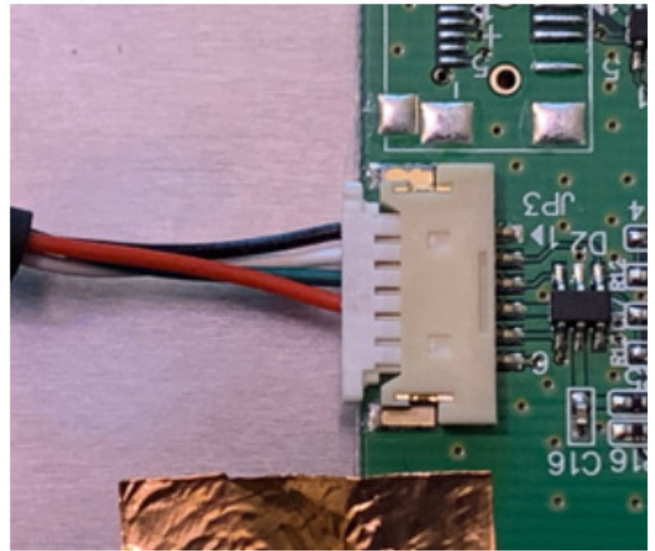
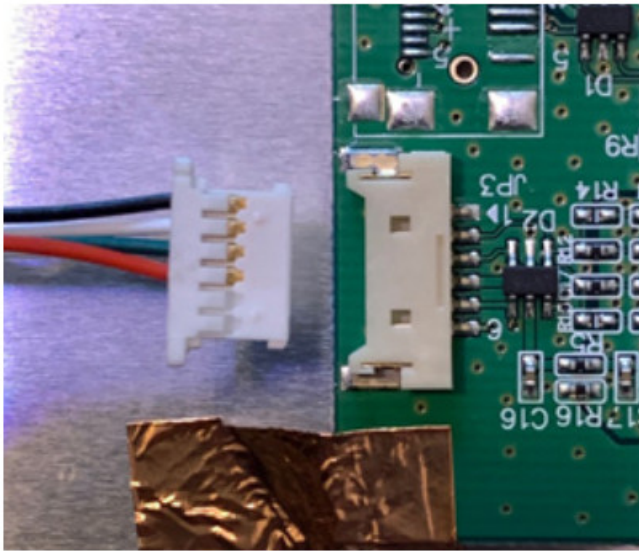


PART 2: CONNECTING THE TOUCH PANEL

The display has a PCB connector with the USB Connections



Note the correct orientation and then push the USB adapter cable connector into the display touch connector



Insert the USB connector into your PC
The touch screen will be automatically recognized and installed by Windows 10.

FURTHER INFORMATION

The values contained in this data sheet can change due to technical innovation. Any such changes will be made without separate notification.

If you require further assistance or have a specific or custom inquiry, please contact the IDS team via email or phone. Alternatively please visit our website for more product info and to see our full range.

Unit 2, Berkshire Business Centre,
Berkshire Drive, Thatcham,
Berkshire, RG19 4EW
+44 (0)1635 294600
info@i-lcd.com
www.i-lcd.com

ABOUT IDS

Intelligent Display Solutions was established in 2001 by display industry experts. We have extensive knowledge of both the technical and user interface approaches to designing displays for various applications, using LCD, TFT, and OLED technologies. We work with our customers to develop new and innovative displays – some award-winning – to enhance their products.


IDS is a division of Intelligent Group Solutions Ltd (IGS) – a well-established, respected, industry-leading Optoelectronics solutions provider. Much of IGS' business comes from providing semi-custom or custom products, both in component and sub-assembly form. We offer design support and prototyping within the European marketplace, with the capability to deliver production displays to wherever in the world the customer's manufacturing or assembly is being undertaken.

INTELLIGENT GROUP SOLUTIONS DIVISIONS



+44 (0)1635 294600 | info@i-lcd.com | www.i-lcd.com
Intelligent Display Solutions, Unit 2, Berkshire Business Centre,
Berkshire Drive, Thatcham, Berkshire, RG19 4EW
A division of Intelligent Group Solutions Ltd

Documents / Resources

	<p>IDS AM-1280800Q7TZQW-T07H LCD Module Touch Screen [pdf] User Guide AM-1280800Q7TZQW-T07H, LCD Module Touch Screen</p>
---	--