

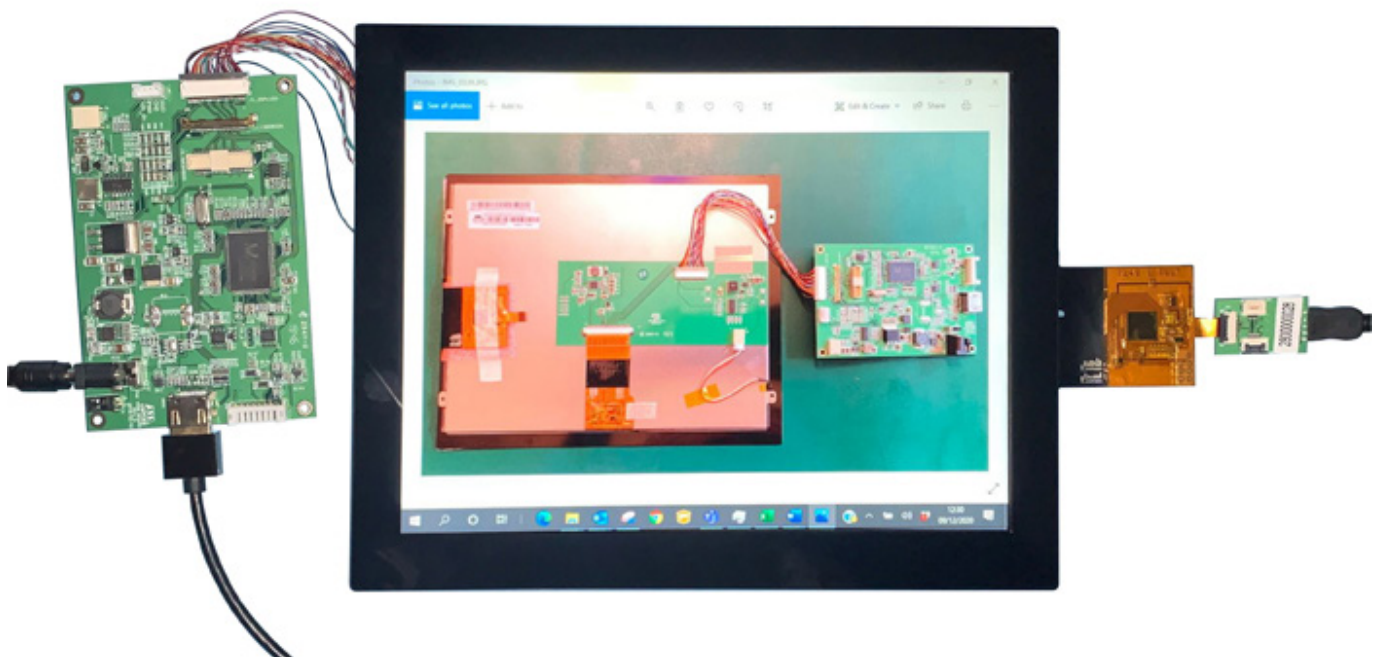
IDS AM-1024768YBTZQW-TH1H LCD Module Touch Screen User Guide

[Home](#) » [IDS](#) » IDS AM-1024768YBTZQW-TH1H LCD Module Touch Screen User Guide 



INTELLIGENT
DISPLAY SOLUTIONS

Quick Start Guide
AM – 102476 8 YBTZQW – TH1H



Contents

1 KIT CONTENTS

2 REQUIRED PARTS NOT SUPPLIED IN THE KIT

3 PART 1: CONNECTING THE DRIVER CARD TO THE DISPLAY

4 CONNECT THE DRIVER CARD TO THE POWER SUPPLY AND HDMI SOURCE

5 PART 2: CONNECTING THE TOUCH PANEL

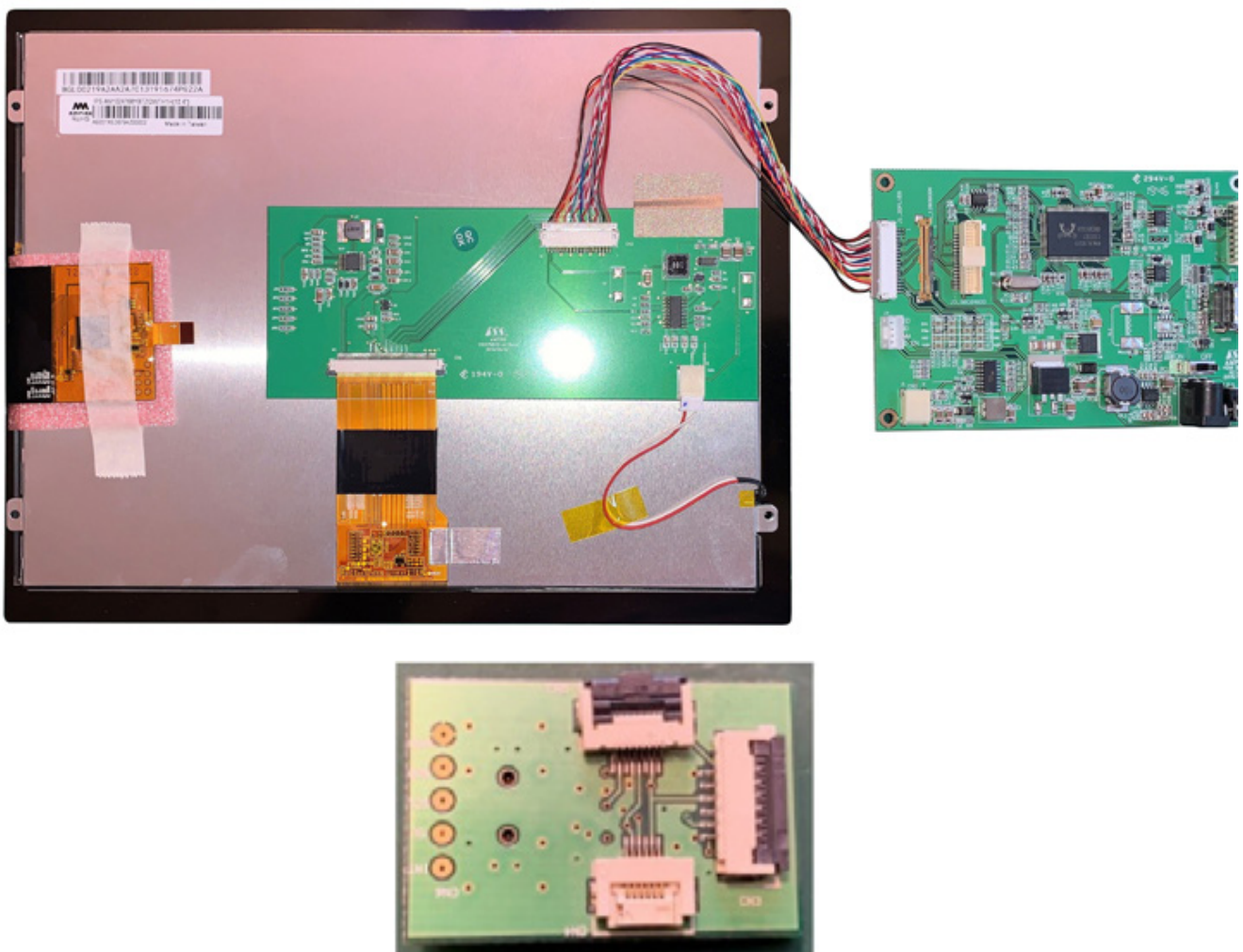
6 FURTHER INFORMATION

7 Documents / Resources

8 Related Posts

KIT CONTENTS

Item	Description	Qty
1	Display with touch panel	1
2	Driver card	1
3	USB adapter card	1



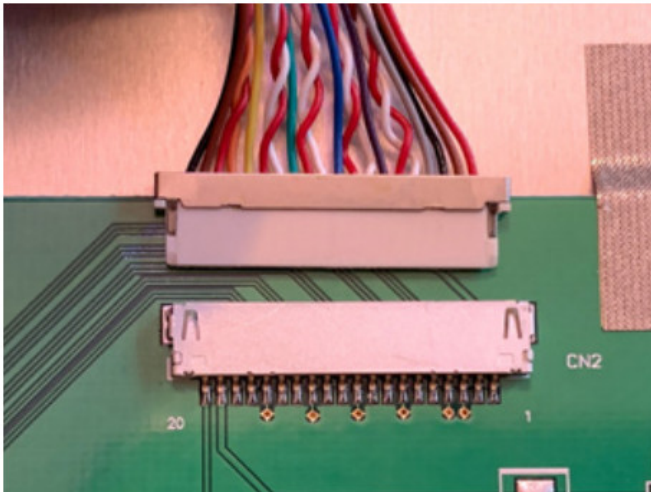
REQUIRED PARTS NOT SUPPLIED IN THE KIT

Item	Description	RS Part Number
1	12V 2A Power supply with 2.1mm x 5.5mm DC Jack	144-0971
2	Generic USB mini lead	193-2871
3	Generic HDMI cable	182-8473

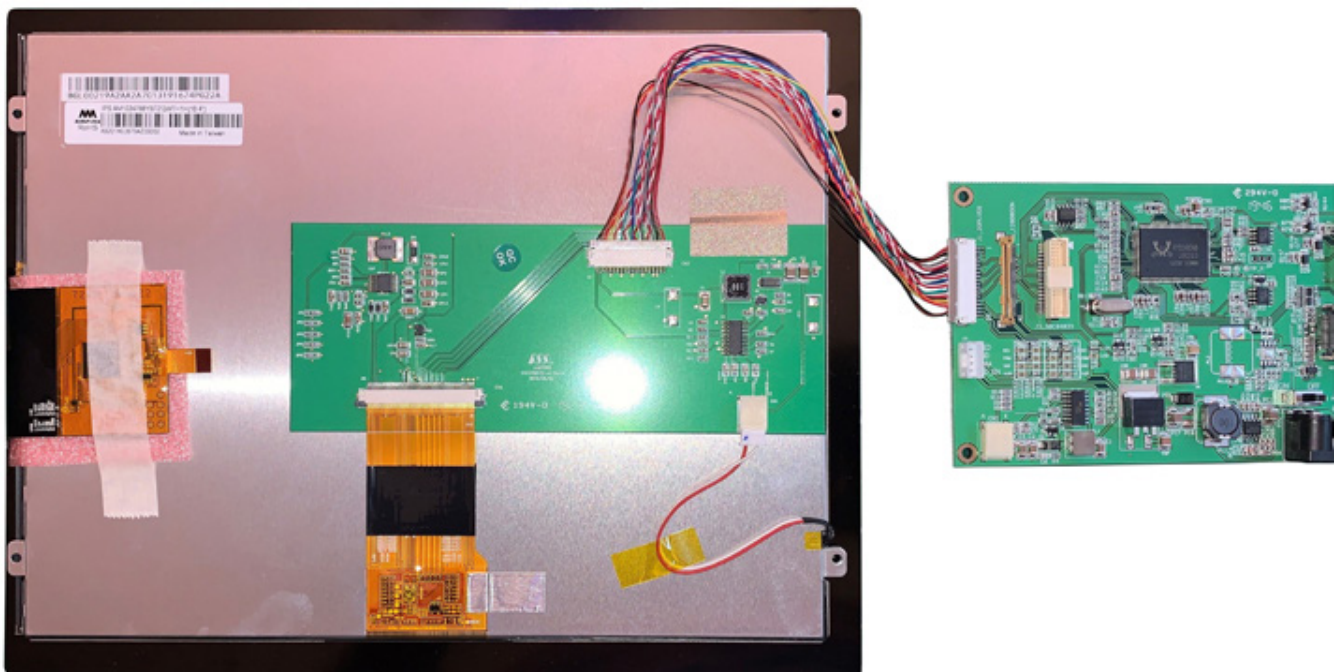
PART 1: CONNECTING THE DRIVER CARD TO THE DISPLAY

Connect the LVDS connector from the driver card to the back of the LCD.

Take care to line up the pins and use the correct orientation as per the picture below



The connection should look like this when the connector is connected correctly.

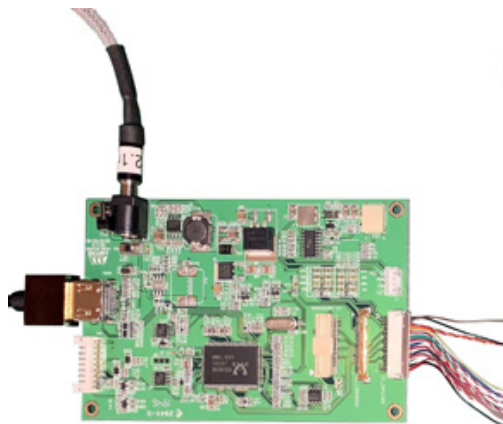
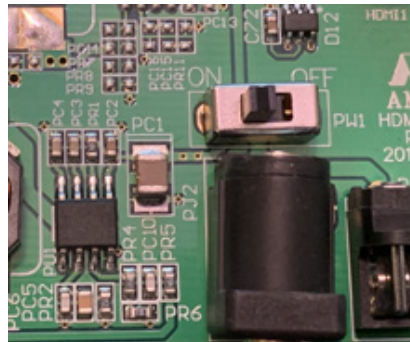


CONNECT THE DRIVER CARD TO THE POWER SUPPLY AND HDMI SOURCE

Connect the power connector to the 12V DC power supply using a 2.1mm connector with centre positive and barrel negative. Connect the HDMI connector to your source.



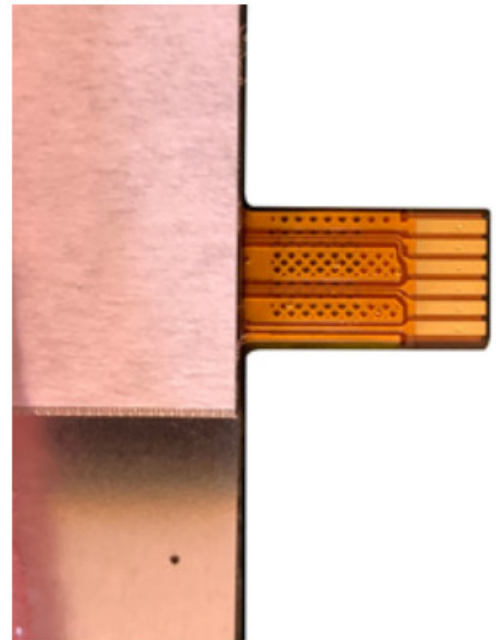
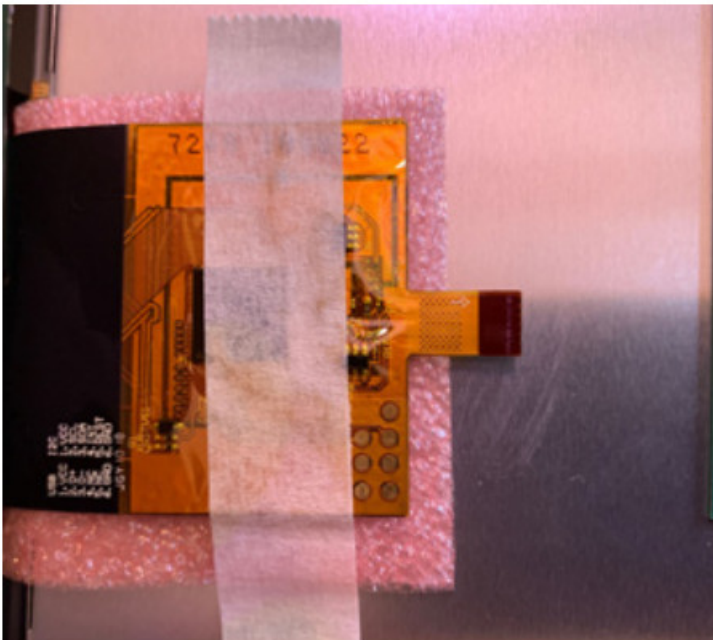
Turn the power switch to the ON position



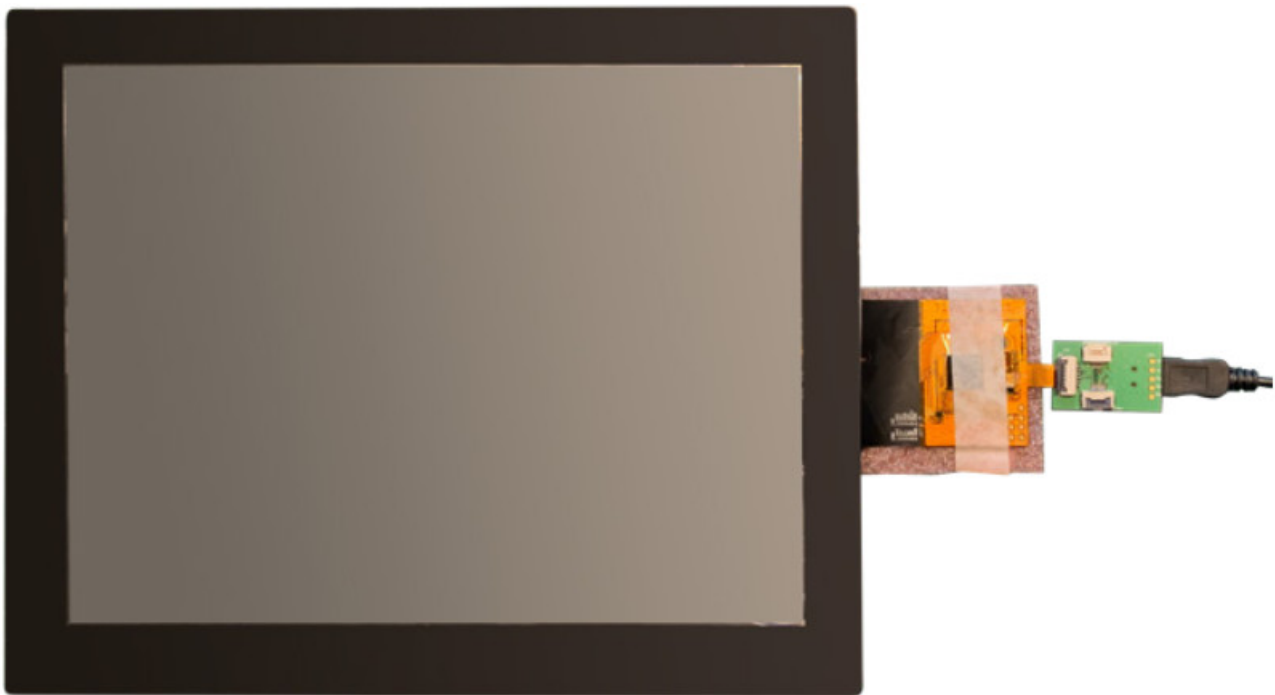
Size	Driver Board	HDMI	DVI	VGA	Power Connector	Ref.
AM-800480CZ1ZQW-TADH						
AM-800480CZ1ZQW-T00H						
AM-1024600CZ1ZQW-T00H						
AM-1024600CZ1ZQW-TAGH						
AM-1024768CZ1ZQW-T01H	8"	1x HDMI Driver + 1x LVDS board	Y	N	N	5.5 x 2.1mm DC Jack
AM-1024768CZ1ZQW-T01H	12.1"	1x HDMI Driver + 1x LVDS board	Y	N	N	5.5 x 2.1mm DC Jack
AM-1280800CZ1ZQW-T15H	12"	Integrated onto display	Y	N	N	5.5 x 2.1mm DC Jack
AM-1280800CZ1ZQW-T07H	12.1"	1x HDMI Driver + 1x Control + 1x Backlight	Y	Y	Y	5.5 x 2.1mm DC Jack
AM-1501080CZ1ZQW-H0H-11	11.6"	1x HDMI Driver + 1x LVDS board	Y	N	N	5.5 x 2.1mm DC Jack
AM-1501080CZ1ZQW-00						
AM-1501080CZ1ZQW-T01						

PART 2: CONNECTING THE TOUCH PANEL

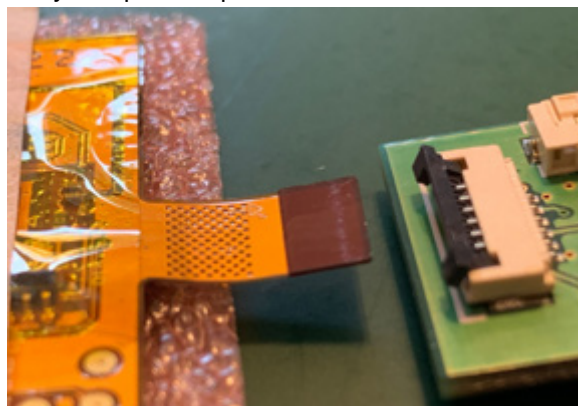
The display has an FFC tail with the USB Connections.



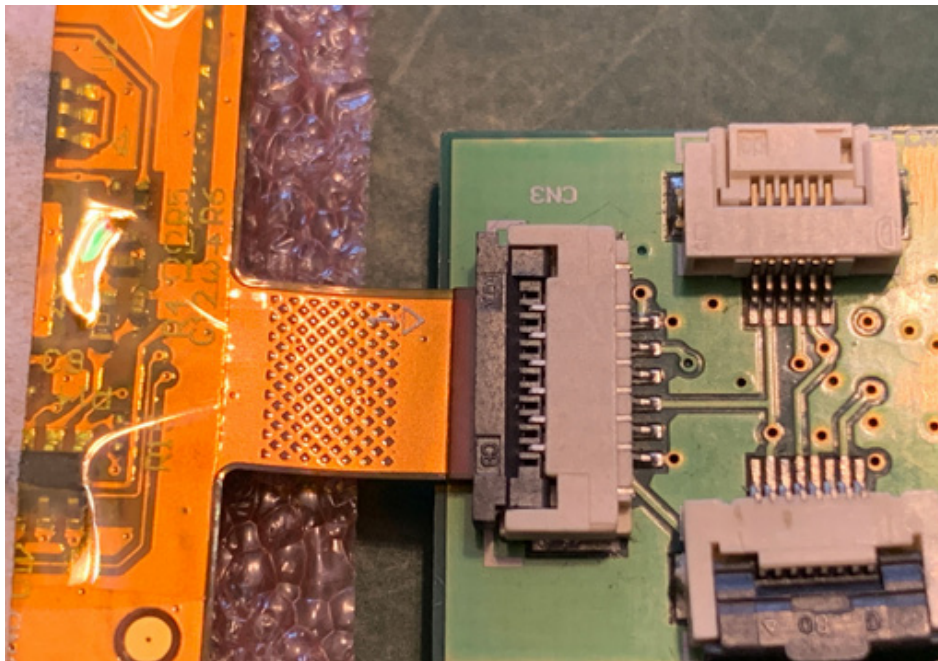
Remove any packing foam and tape to release the Touch control board from the back of the display. Place the display face up and line up the small USB connector PCB.



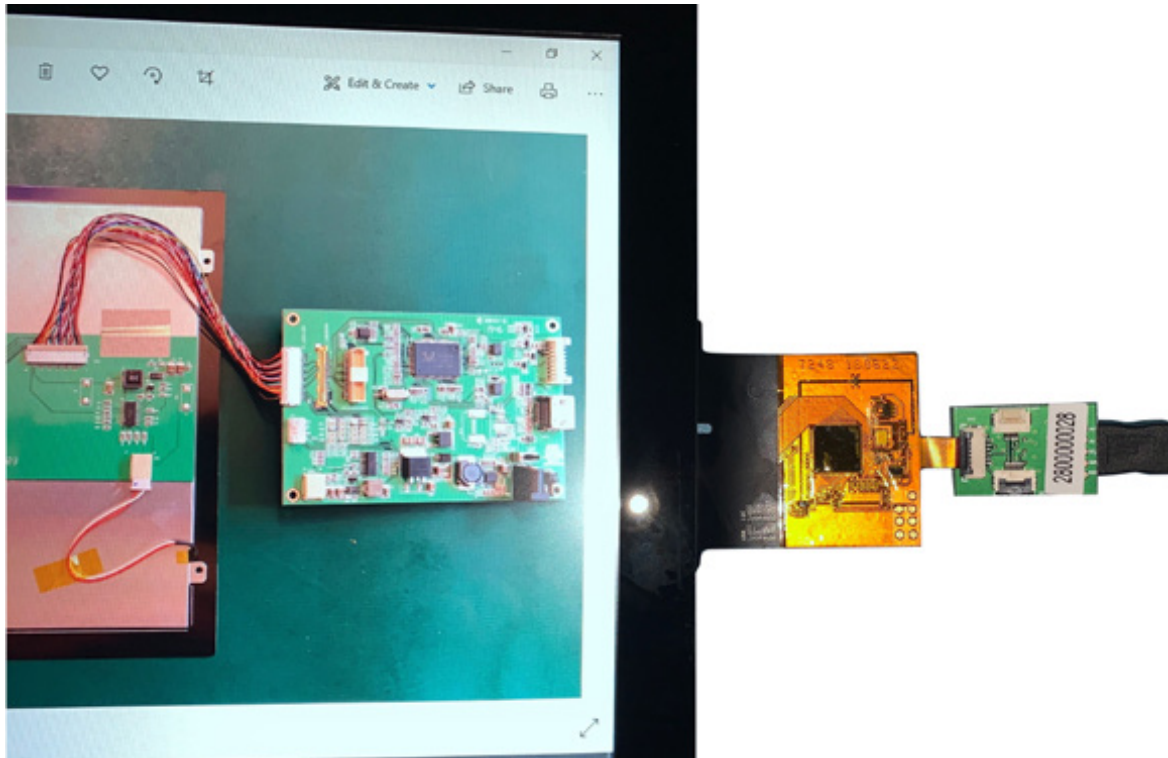
Locate CN4 on the PCB and carefully lift up the flap.



Note the orientation of the FFC and the PCB, it must be connected the correct way round or damage may occur. Push the FFC tail into the connector far enough so that the dark strengthening section is all the way in, and close the flap.



Insert the USB mini connector into the adapter board and connect to your PC.



The touch screen will be automatically recognised and installed by Windows 10.

Warning:

The FFC is very fragile and if the USB cable is caught it is likely to cause permanent damage by tearing the flexible PCB. It is recommended that the USB cable and adapter PCB are secured to the back of the display using adhesive tape to stop any strain on the connections.

FURTHER INFORMATION

The values contained in this data sheet can change due to technical innovation. Any such changes will be made without separate notification.

If you require further assistance or have a specific or custom enquiry, please contact the IDS team via email or phone. Alternatively please visit our website for more product info and to see our full range.

Unit 2, Berkshire Business Centre,
Berkshire Drive, Thatcham,

Berkshire, RG19 4EW
+44 (0)1635 294600
info@i-lcd.com
www.i-lcd.com

ABOUT IDS

Intelligent Display Solutions was established in 2001 by display industry experts. We have extensive knowledge of both the technical and user interface approaches to designing displays for various applications, using LCD, TFT and OLED technologies. We work with our customers to develop new and innovative displays – some award-winning – to enhance their products.


IDS is a division of Intelligent Group Solutions Ltd (IGS) – a well-established, respected, industry-leading Optoelectronics solutions provider. Much of IGS' business comes from providing semi-custom or custom products, both in component and sub-assembly form. We offer design support and prototyping within the European marketplace, with the capability to deliver production displays to wherever in the world the customer's manufacturing or assembly is being undertaken.

INTELLIGENT GROUP SOLUTIONS DIVISIONS



+44 (0)1635 294600 | info@i-lcd.com | www.i-lcd.com
Intelligent Display Solutions, Unit 2, Berkshire Business Centre,
Berkshire Drive, Thatcham, Berkshire, RG19 4EW
A division of Intelligent Group Solutions Ltd

Documents / Resources

	<p>IDS AM-1024768YBTZQW-TH1H LCD Module Touch Screen [pdf] User Guide AM-1024768YBTZQW-TH1H, LCD Module Touch Screen</p>
---	---