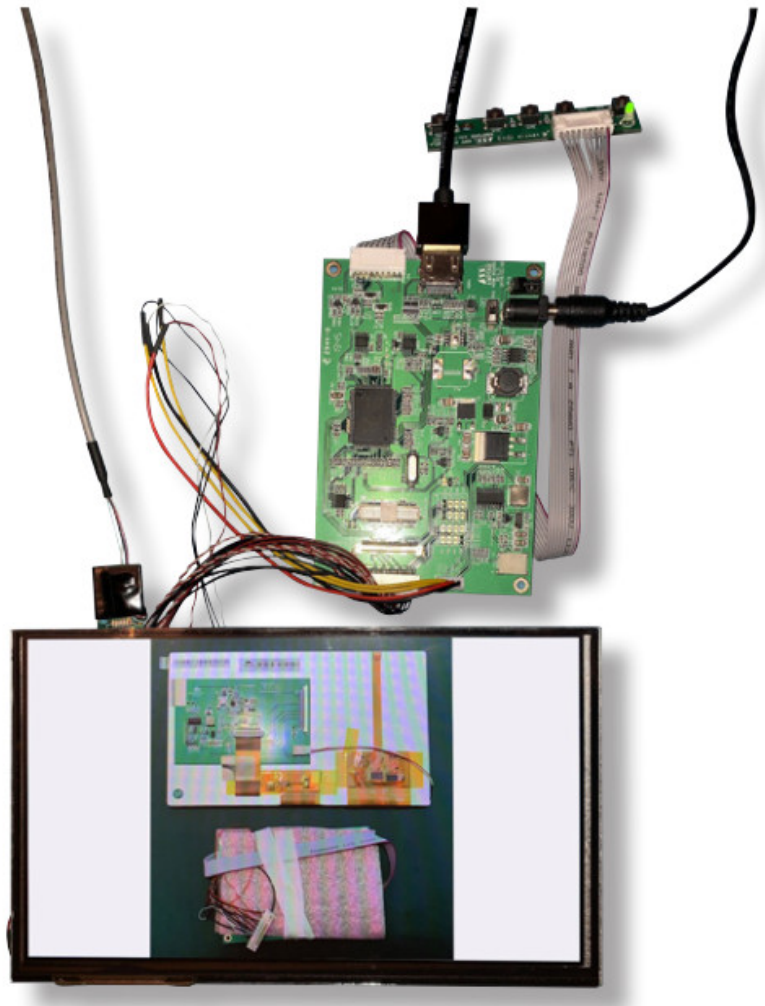


IDS AM-1024600YATZQW-TA6H LCD Module User Guide

[Home](#) » [IDS](#) » IDS AM-1024600YATZQW-TA6H LCD Module User Guide 



Quick Start Guide
AM-1024600YATZQW-TA6H



Contents

1 KIT CONTENTS

2 REQUIRED PARTS NOT SUPPLIED IN THE KIT

3 PART 1: CONNECTING THE DRIVER CARD TO THE DISPLAY

4 CONNECT THE DRIVER CARD TO A POWER SUPPLY AND HDMI SOURCE

5 CONNECT THE DRIVER CARD TO A POWER SUPPLY AND HDMI SOURCE

6 PART 2: CONNECTING THE TOUCH PANEL

7 PART 2: CONNECTING THE TOUCH PANEL

8 PART 2: CONNECTING THE TOUCH PANEL

9 FURTHER INFORMATION

10 ABOUT IDS

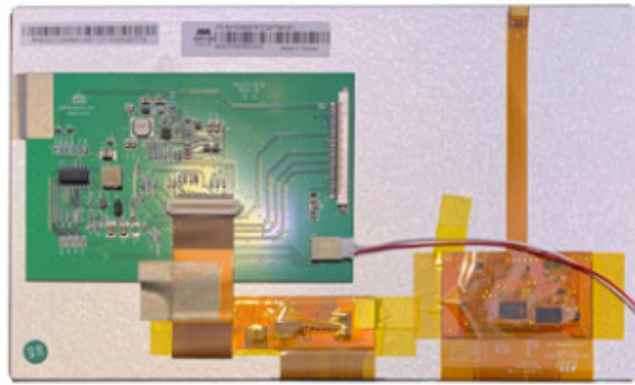
11 INTELLIGENT GROUP SOLUTIONS DIVISIONS

12 Documents / Resources

13 Related Posts

KIT CONTENTS

Item	Description
1	Display with touch panel
2	Driver card
3	CAB-USB-CPT-6WAY-1.0mm-01 cable from IDS Ltd



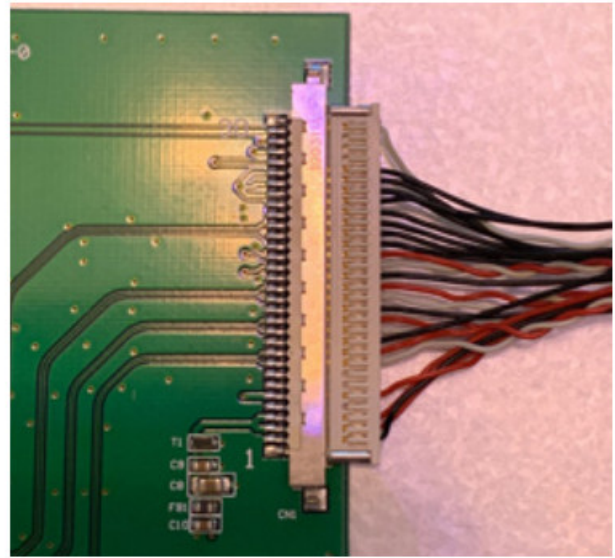
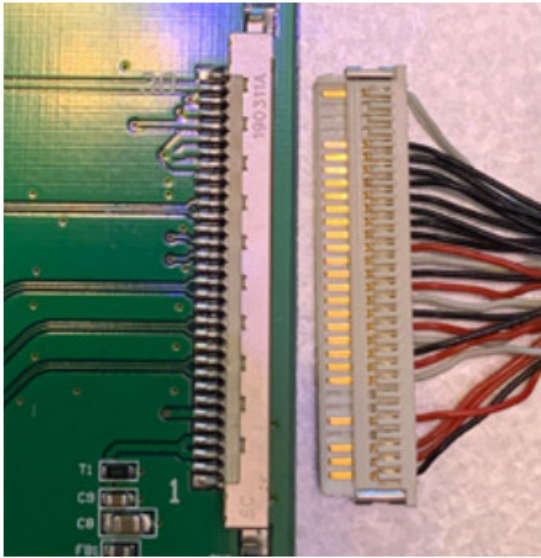
+44 (0)1635 294600 | info@i-lcd.com | www.i-lcd.com
 Intelligent Display Solutions, Unit 2, Berkshire Business Centre,
 Berkshire Drive, Thatcham, Berkshire, RG19 4EW
 A division of Intelligent Group Solutions Ltd

REQUIRED PARTS NOT SUPPLIED IN THE KIT

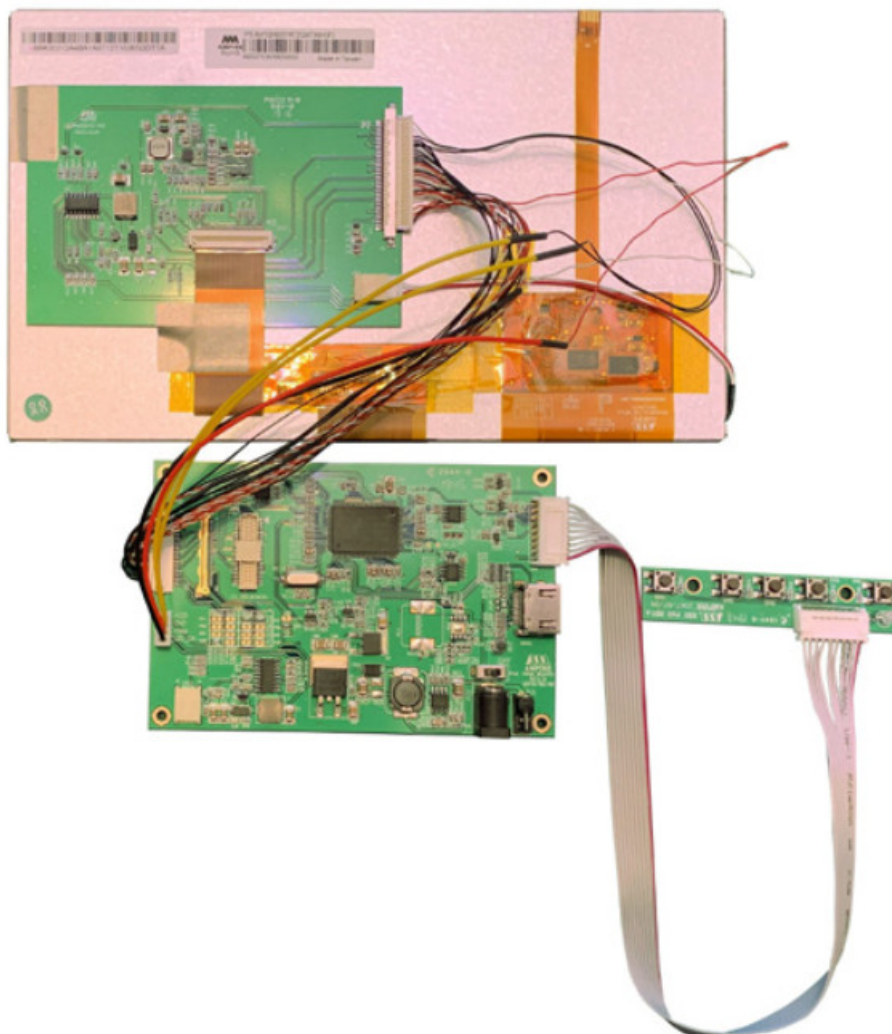
Item	Description	RS Part Num
1	12V 2A Power supply with 2.1mm x 5.5mm DC Jack	144-0971

PART 1: CONNECTING THE DRIVER CARD TO THE DISPLAY

Connect the LVDS connector from the driver card to the back of the LCD.
 Take care to line up the pins and use the correct orientation as per the picture below.

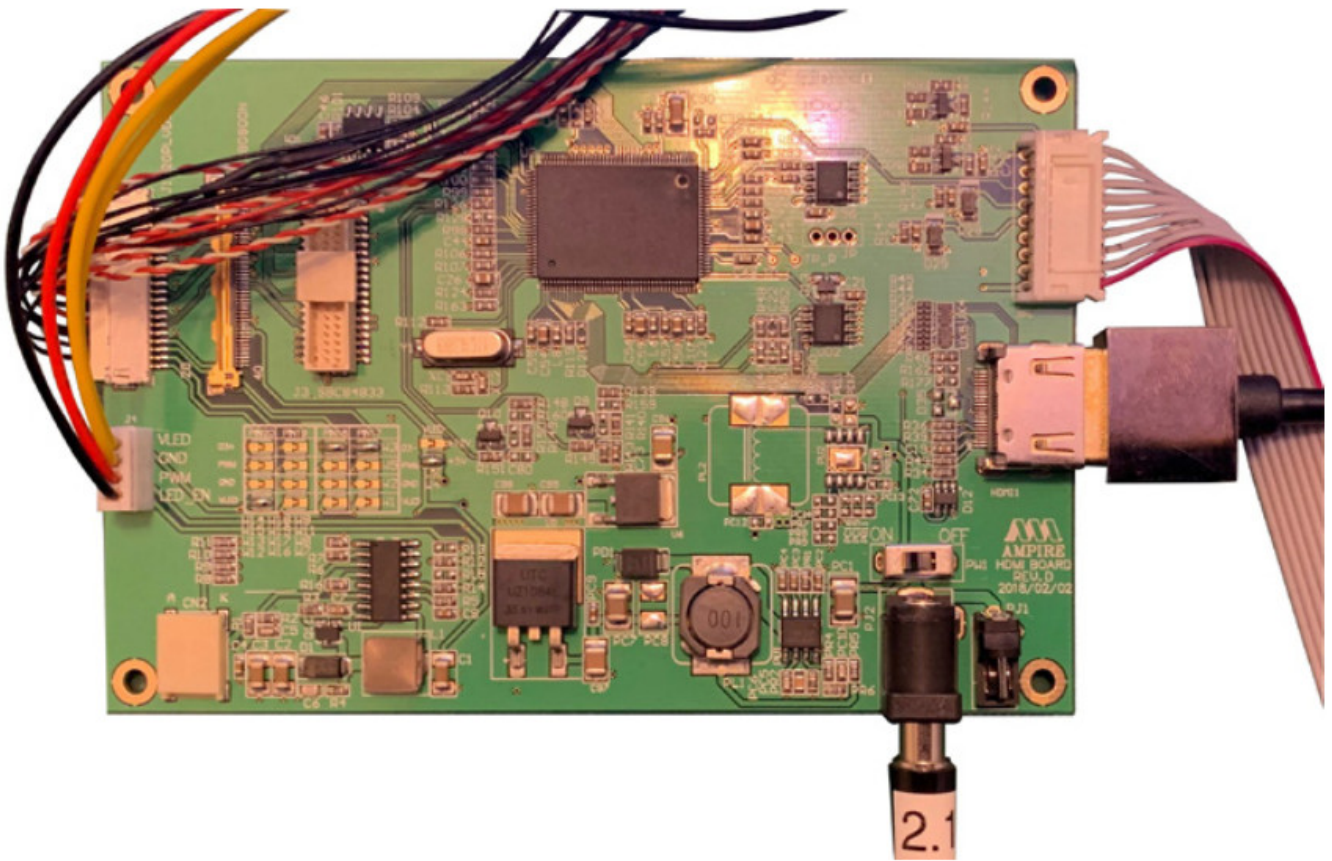


The connection should look like this when the connector is connected correctly.

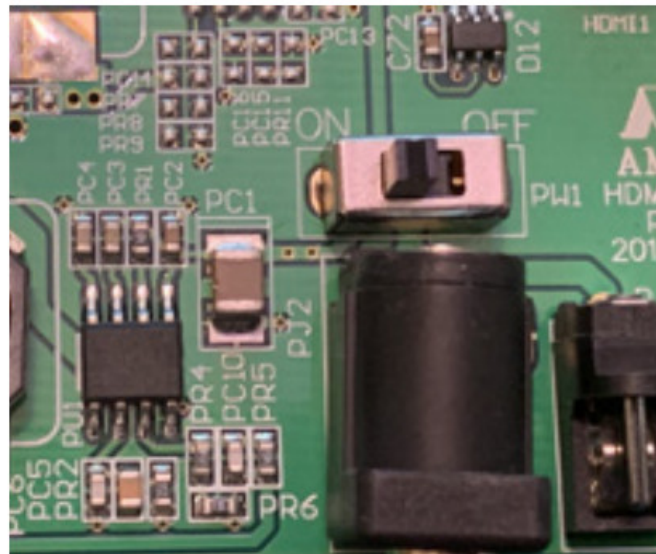


CONNECT THE DRIVER CARD TO A POWER SUPPLY AND HDMI SOURCE

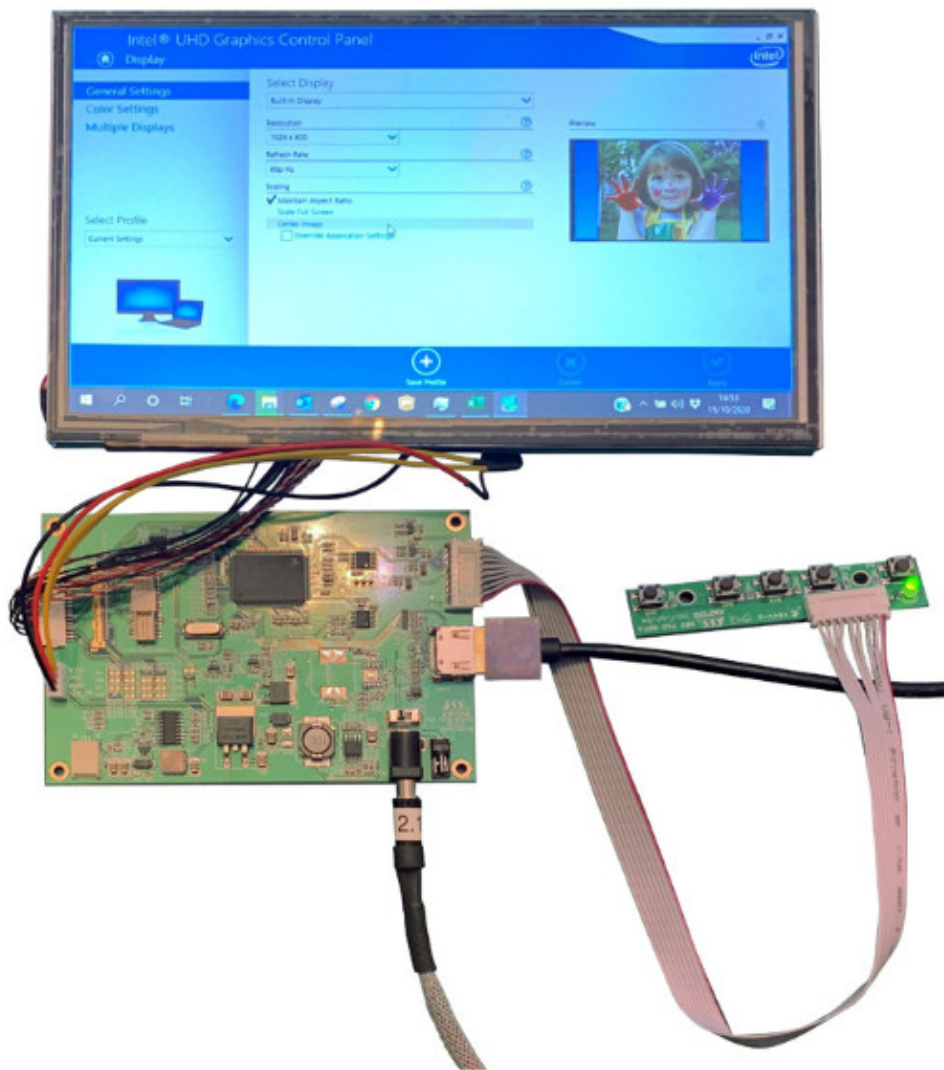
Connect the power connector to the 12V DC power supply using a 2.1mm connector with center positive and barrel negative. Connect the HDMI connector to your source.



Turn the power switch to the ON position

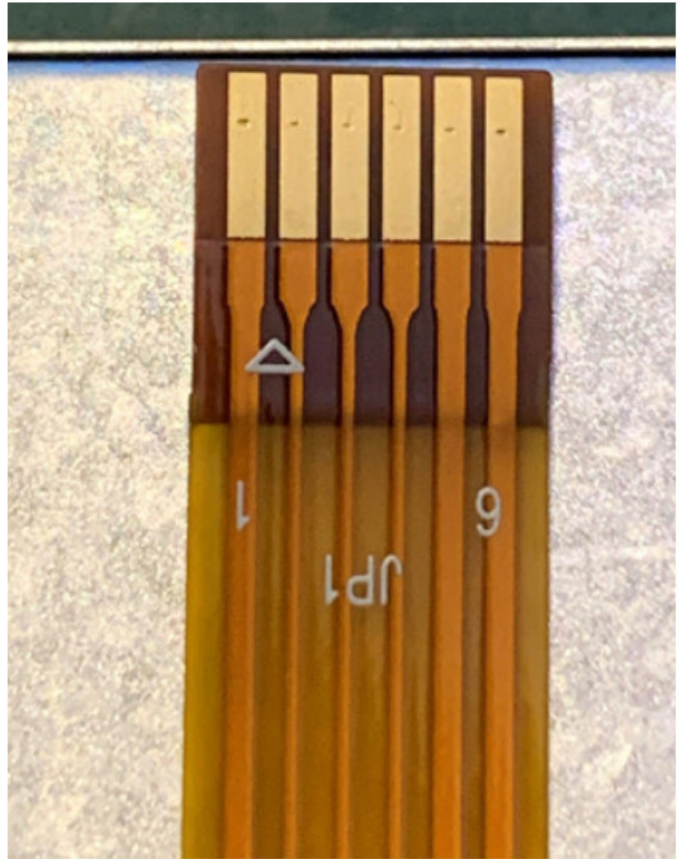
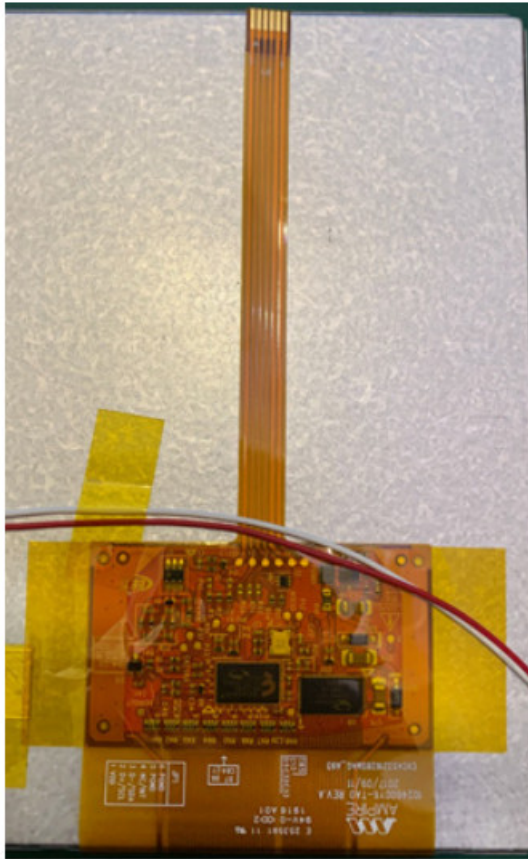


CONNECT THE DRIVER CARD TO A POWER SUPPLY AND HDMI SOURCE

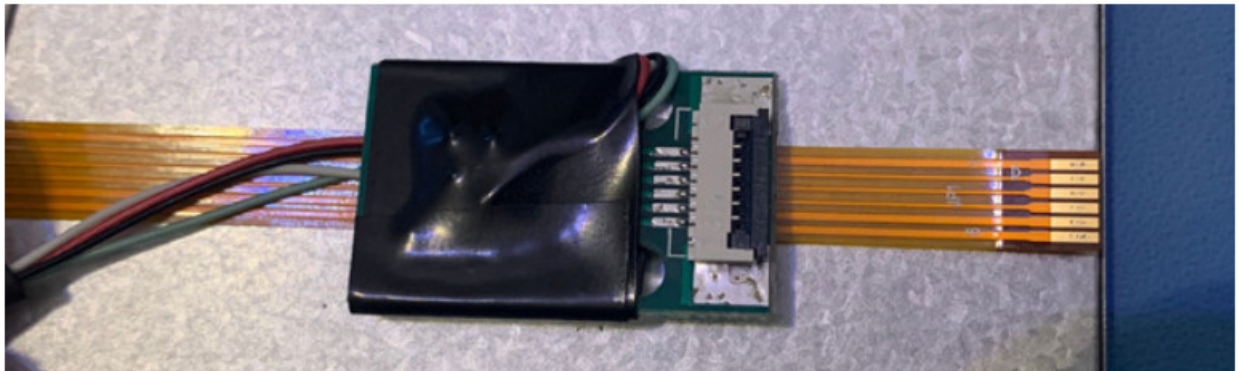


PART 2: CONNECTING THE TOUCH PANEL

The display has an FFC tail with USB Connections.

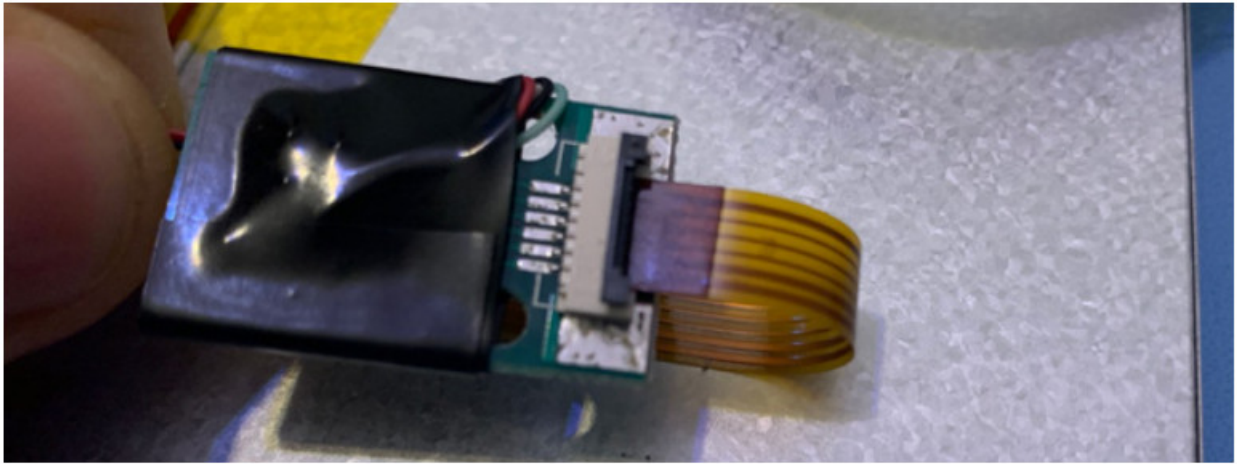


Locate the 6 way 1.0mm connector on the USB cable (Note: Ignore the smaller 0.5mm pitch connector if fitted). Lay the display face down. Lift up the flap on the connector and lay it on top of the FFC tail.

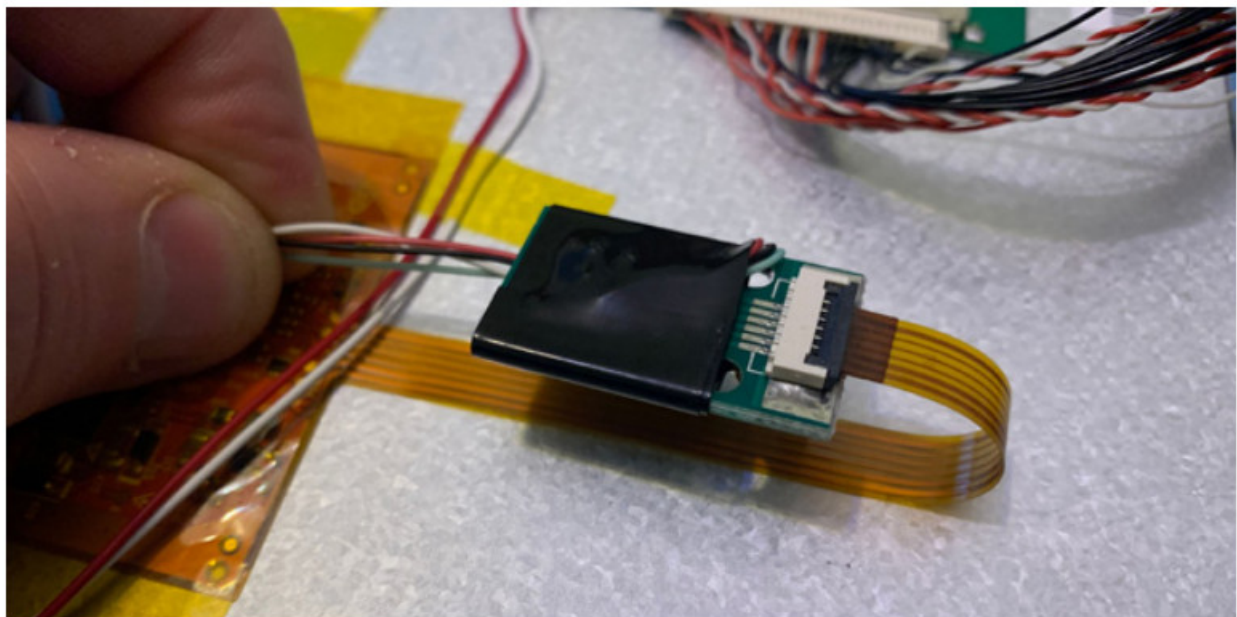


PART 2: CONNECTING THE TOUCH PANEL

Fold the FFC tail over and insert it into the connector. Note the orientation of the FFC and the PCB, it must be connected the correct way round or damage may occur. Push the FFC tail into the connector far enough so that the dark strengthening section is all the way in, and close the flap.

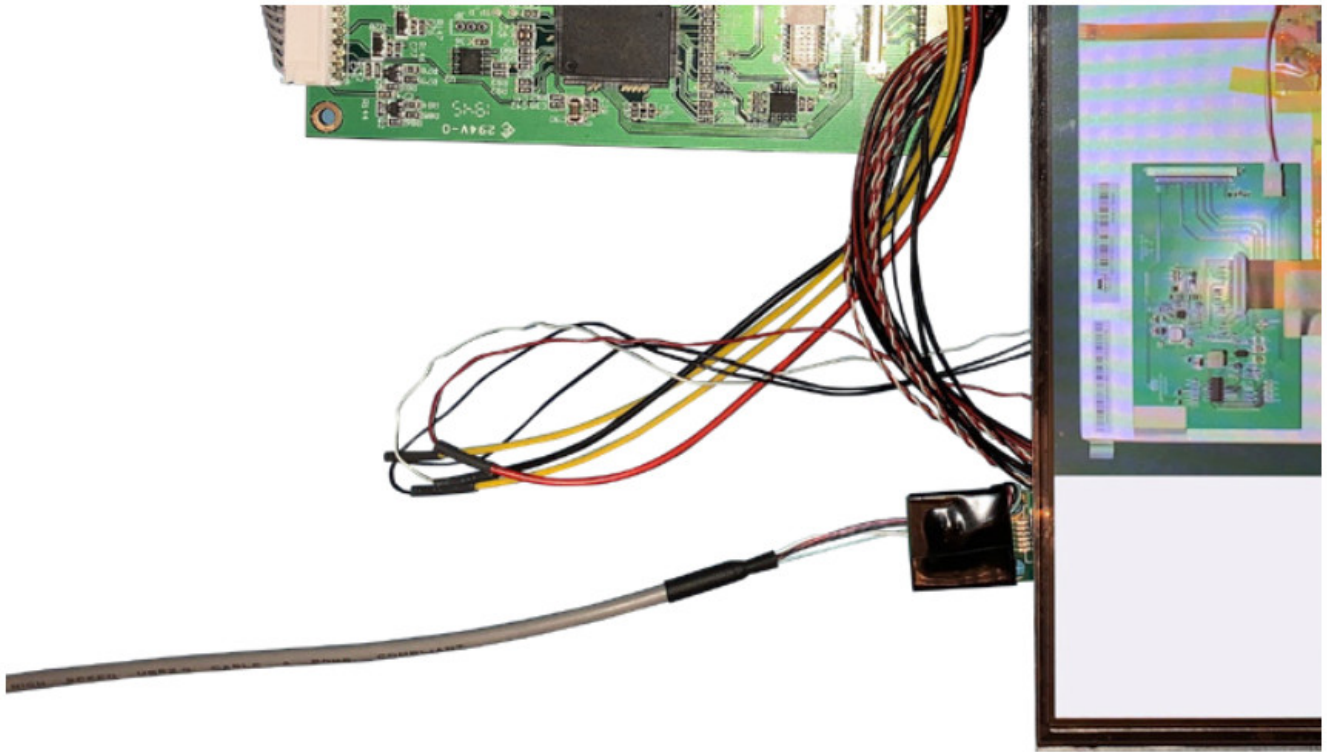


Close the flap to secure the FFC tail



Insert the USB mini connector into the adapter board and connect it to your PC

PART 2: CONNECTING THE TOUCH PANEL



The touch screen will be automatically recognized and installed by Windows 10.

Warning:

The FFC is very fragile and if the USB cable is caught it is likely to cause permanent damage by tearing the flexible PCB. It is recommended that the USB cable and adapter PCB be secured to the back of the display using adhesive tape to stop any strain on the connections.

FURTHER INFORMATION

The values contained in this data sheet can change due to technical innovation. Any such changes will be made without separate notification.

If you require further assistance or have a specific or custom inquiry, please contact the IDS team via email or phone. Alternatively please visit our website for more product info and to see our full range.



INTELLIGENT
DISPLAY SOLUTIONS

Unit 2, Berkshire Business Centre,
Berkshire Drive, Thatcham,
Berkshire, RG19 4EW

+44 (0)1635 294600

info@i-lcd.com

www.i-lcd.com

ABOUT IDS

Intelligent Display Solutions was established in 2001 by display industry experts. We have extensive knowledge of both the technical and user interface approaches to designing displays for various applications, using LCD, TFT, and OLED technologies. We work with our customers to develop new and innovative displays – some award-winning – to enhance their products.

IDS is a division of Intelligent Group Solutions Ltd (IGS) – a well-established, respected, industry-leading Optoelectronics solutions provider. Much of IGS' business comes from providing semi-custom or custom products,


both in component and sub-assembly form. We offer design support and prototyping within the European marketplace, with the capability to deliver production displays to wherever in the world the customer's manufacturing or assembly is being undertaken.

INTELLIGENT GROUP SOLUTIONS DIVISIONS



+44 (0)1635 294600 | info@i-lcd.com | www.i-lcd.com
Intelligent Display Solutions, Unit 2, Berkshire Business Centre,
Berkshire Drive, Thatcham, Berkshire, RG19 4EW
A division of Intelligent Group Solutions Ltd

Documents / Resources

	<p>IDS AM-1024600YATZQW-TA6H LCD Module [pdf] User Guide AM-1024600YATZQW-TA6H, LCD Module</p>
---	---

[Manuals+](#).