



## idinio IDI\_BOUWDIMMER\_ZIGBEE Zigbee LED Dimmer Module User Guide

[Home](#) » [idinio](#) » idinio IDI\_BOUWDIMMER\_ZIGBEE Zigbee LED Dimmer Module User Guide 

*idinio IDI\_BOUWDIMMER\_ZIGBEE Zigbee LED  
Dimmer Module User Guide*



**Zigbee collection**  
Zigbee LED dimmer module



**zigbee**  
Certified  
Product



**3.0**  
zigbee® 3.0

Scan for product info. & manual



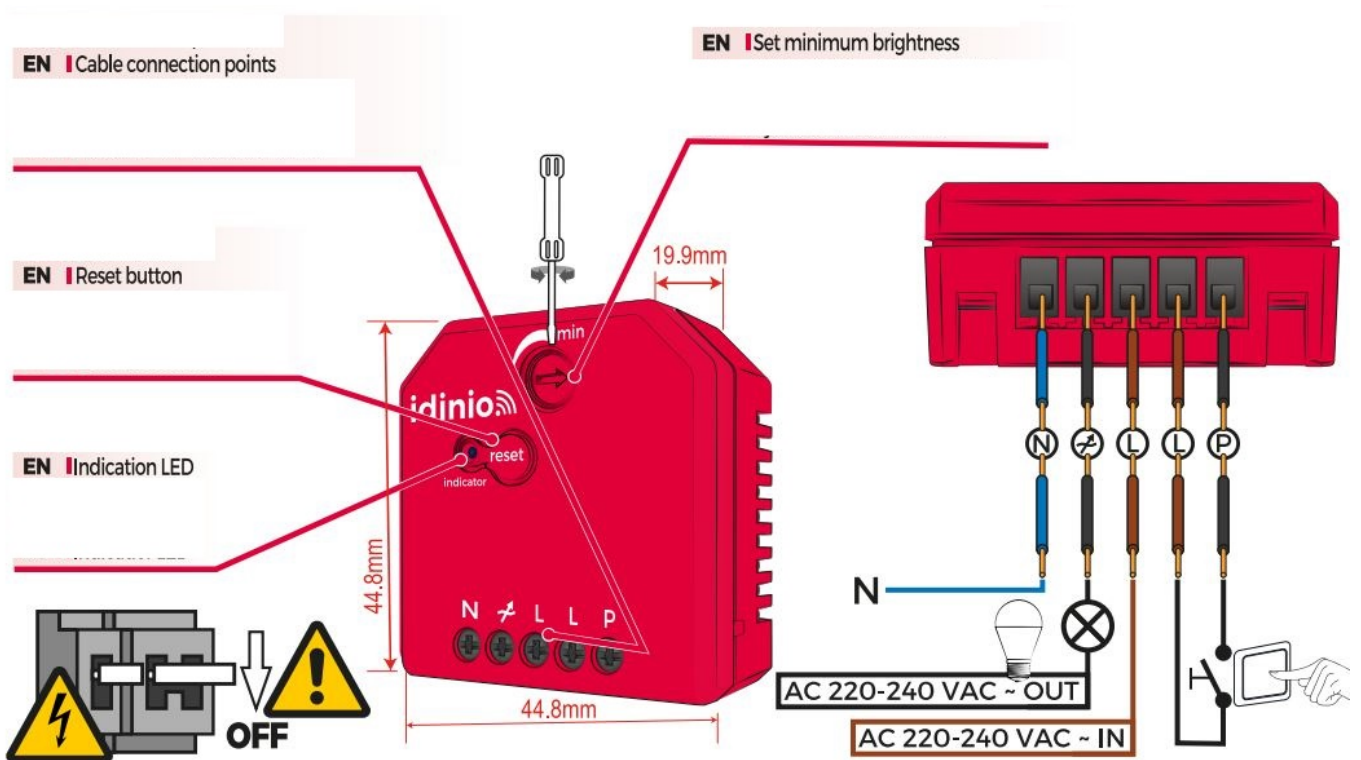
LET'S MEET ONLINE  
[www.shada.nl/idinio](http://www.shada.nl/idinio)

**Quick Start Guide**

### Contents

- [1 Installation](#)
- [2 Compatible load types](#)
- [3 Network paring](#)
- [4 Touch Link](#)
- [5 Remove the device from a zig bee network](#)
- [6 Manual Factory Reset](#)
- [7 Find and Bind Mode](#)
- [8 Setup Zigbee Network](#)
- [9 Documents / Resources](#)
- [10 Related Posts](#)

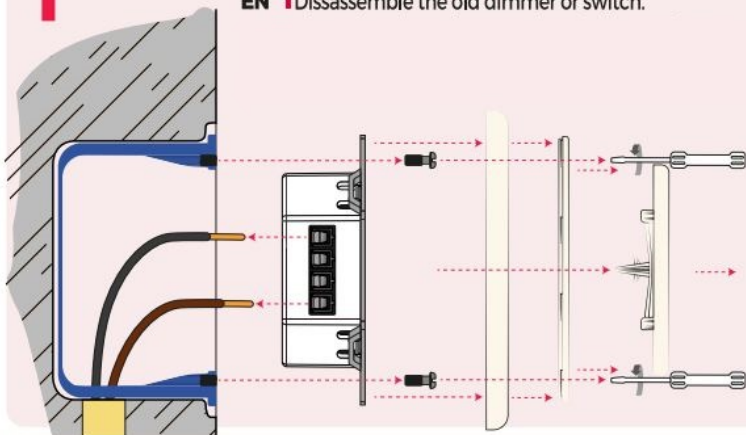
### Installation



Turn off the power of the specific power group in the fuse box and double check if the existing wall dimmer is really turned off

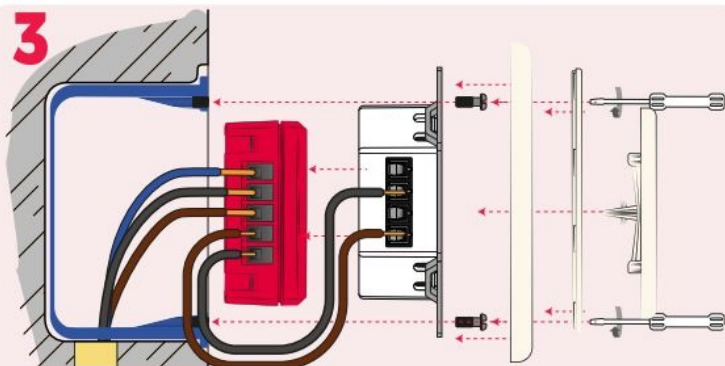
1

EN **I** Dissassemble the old dimmer or switch.



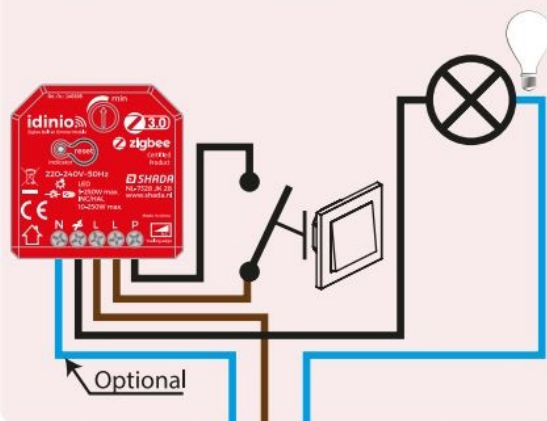
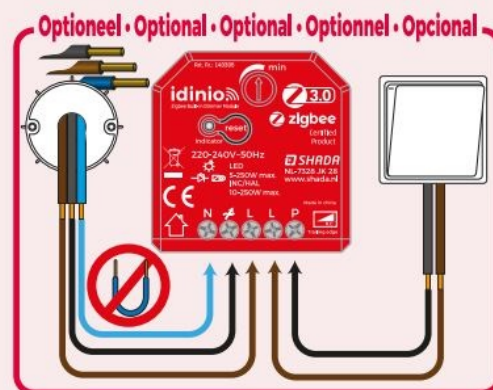
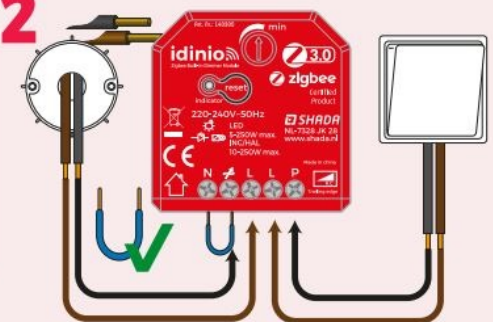
EN **I** Connect the power wires according to the wire diagram

3



EN **I** Install the dimmer in the wall box and fix it with the 2 screws

2



EN **I** Turn on the power again in the fuse box and test the dimmer




Input Voltage  
AC220-240V-

Output Voltage  
AC220-240V-

Output Current  
12A max.

Size  
L:44.SxW:44.8mm x H:19.9

Compatible load types

	Soort belasting • Load Type • Belastungstyp • Type de charge • Tipo de carga	Maximale belasting • Maximum Load • Maximallast • Charge maximale • Carga máxima	Opmerkingen • Remarks • Anmerkungen • Remarques • Comentarios
	Dimmable LED lamps	250W	Due to variety of LED lamp designs, maximum number of LED lamps is dependent on the power factor result when connected to the dimmer.
	Dimmable LED drivers	250W	
	Incandescent lighting, HV Halogen lamps	250W	Maximum permitted number of drivers is max. 250W.
	Low voltage halogen lighting with electronic transformers	250W	

Zig Bee AC phase cut dimmer based on the latest ZigBee 3.0 protocol. 220V-240V AC Input and Output Voltage. Supports resistive loads and capacitive loads. Trailing edge control. Enables to control ON/OFF and light intensity of connected triac dimmable led light or led driver. ZigBee end device that supports Touchline. can directly pair to a compatible ZigBee remote via Touchline without a hub. Supports self-forming zig bee (mesh) network without a hub and add other devices to the network. Supports find and bind mode to bind a ZigBee remote. Radio Frequency: 24GHz.

**ZigBee Clusters which are supported by this device are as follows:**

## Network pairing

### Operation

This ZigBee device is a wireless receiver that communicates with variety of ZigBee compatible systems. This receiver receives and is controlled by wireless radio signals from the compatible ZigBee system.

## Zigbee Network Pairing through coordinator or hub (being added to a Zig bee Network)



Remove the device from a previous zigbee network When it already has been paired before, otherwise pairing will fail. Please refer to the part ""Manual Factory Reset"".

[1](#) [2](#) [3](#) [4](#) [5](#) [6](#) [7](#) [8](#) [9](#) [10](#) [11](#) [12](#) [13](#) [14](#) [15](#) [16](#) [17](#) [18](#) [19](#) [20](#) [21](#) [22](#) [23](#) [24](#) [25](#) [26](#) [27](#) [28](#) [29](#) [30](#) [31](#) [32](#) [33](#) [34](#) [35](#) [36](#) [37](#) [38](#) [39](#) [40](#) [41](#) [42](#) [43](#) [44](#) [45](#) [46](#) [47](#) [48](#) [49](#) [50](#) [51](#) [52](#) [53](#) [54](#) [55](#) [56](#) [57](#) [58](#) [59](#) [60](#) [61](#) [62](#) [63](#) [64](#) [65](#) [66](#) [67](#) [68](#) [69](#) [70](#) [71](#) [72](#) [73](#) [74](#) [75](#) [76](#) [77](#) [78](#) [79](#) [80](#) [81](#) [82](#) [83](#) [84](#) [85](#) [86](#) [87](#) [88](#) [89](#) [90](#) [91](#) [92](#) [93](#) [94](#) [95](#) [96](#) [97](#) [98](#) [99](#) [100](#)



From your ZigBee controller or hub interface: choose to add a lighting device and enter Pairing mode as instructed by the controller.



Double Press the reset button to activate the network pairing mode (the blue indicator light is flashing) and the network pairing mode will last for 15 minutes. After a timeout repeat this step.

[1](#) [2](#) [3](#) [4](#) [5](#) [6](#) [7](#) [8](#) [9](#) [10](#) [11](#) [12](#) [13](#) [14](#) [15](#) [16](#) [17](#) [18](#) [19](#) [20](#) [21](#) [22](#) [23](#) [24](#) [25](#) [26](#) [27](#) [28](#) [29](#) [30](#) [31](#) [32](#) [33](#) [34](#) [35](#) [36](#) [37](#) [38](#) [39](#) [40](#) [41](#) [42](#) [43](#) [44](#) [45](#) [46](#) [47](#) [48](#) [49](#) [50](#) [51](#) [52](#) [53](#) [54](#) [55](#) [56](#) [57](#) [58](#) [59](#) [60](#) [61](#) [62](#) [63](#) [64](#) [65](#) [66](#) [67](#) [68](#) [69](#) [70](#) [71](#) [72](#) [73](#) [74](#) [75](#) [76](#) [77](#) [78](#) [79](#) [80](#) [81](#) [82](#) [83](#) [84](#) [85](#) [86](#) [87](#) [88](#) [89](#) [90](#) [91](#) [92](#) [93](#) [94](#) [95](#) [96](#) [97](#) [98](#) [99](#) [100](#)



The Blue indicator will stop flashing and solid on for 10s then the device will appear in your controller's menu and can be controlled through controller or hub interface.

## Touch Link





TouchLink to a Zigbee Remote



Short press "Reset" button 4 times.



The Green indicator will start flashing to show that the device is in touchlink commissioning. When after 180s a timeout occurs repeat this step.



Bring the remote or touch panel within 10cm of the lighting device.



Set the remote or touch panel into Touchlink commissioning, please refer to the corresponding remote or touch panel manual how to do this.

## Remove the device from a zig bee network



Short press the rest button 3 times. the purple Indictor light will start flashing the will stop flashing and become solid for 10 seconds to show that the device has been successfully.

## Manual Factory Reset



Press and hold the reset button for over 5 seconds.



The Red indicator light will be on for 10 seconds to show the reset has been successful.

**Note:** All configuration settings will be erased when the device has been reset or removed from the network.

## Find and Bind Mode



Press and hold the reset button for over 5 seconds.



The Red indicator light will be on for 10 seconds to show the reset has been successful.

**Note:** All configuration settings will be erased when the device has been reset or removed from the network.



Set the remote or touch panel (target node) into find and bind mode and enable it to find and bind the initiator, refer to corresponding remote or touch panel manual for instructions.



The remote or touch panel will indicate that the device was connected successfully and can now be controlled and programmed.

## Setup Zigbee Network

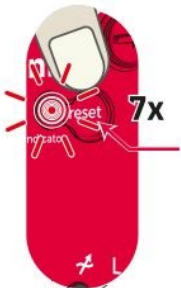


Setup a Zigbee network & add other devices to this network (no hub required)

Press the reset button for 6 times to enable the device to setup a Zigbee network.



The white indicator will start flashing and stay solid for 10 seconds to show that the dimmer has successfully created the Zigbee network.



Press the reset button for 7 times to allow other devices to be added to the Zigbee network. The red indicator light will be flashing continuously.



Set a device (e.g. remote or touch panel) into network pairing mode and connect it to the network, refer to the corresponding remote or touch panel manual how to do this. This operation has a time limit of 180 seconds.



Repeat step 4 in case you want to connect more devices and remotes to the network, refer to their manuals.



Bind the added devices and remotes through Touchlink so that the devices can be controlled by the remotes, refer to their manuals.

#### ⚠ NOTE

1. Each added device can link and be controlled by max.30 added remotes.
2. Please refer to remote manual on how many devices can be linked.

#### ⚠ WARNING



### **Safety warning!**


Ensure you have fully read and understood the instructions in this document before you install or use the product following the installation/wire diagram (when applicable). Keep this document for future reference and only use the product as described in this document. Any other use of the product than described in this manual may damage the product or cause injury to the user (e.g. due to a short circuit fire or electric shock). Disconnect the product from the power source if problems occur. Do not drop the product and avoid bumping. Do not use the product if a part is damaged or defective. Replace a damaged defective product immediately. When a non-standard consumer (power) installation is required, this should be performed by a qualified technician to reduce the risk of an electric shock. Make sure the product is sufficiently ventilated during use. Never cover an electrical (LED) device during usage since it can generate heat causing damage. Besides LED can be extremely bright and may cause serious eye damage so don't stare at it directly. When a product is meant for indoor and/or outdoor use only, this will be mentioned on the product/parts or in the manual. Keep the product out of reach of children or animals.

### **Cleaning and Maintenance warning!**


Do not use cleaning solvents or abrasives. Do not clean the inside of the device. Do not attempt to repair the device when the device does not operate correctly, replace it. Clean the outside of the device using a soft, damp cloth (don't use microfiber cloth).

### **Support:**


If you need further help or have comments or suggestions please visit [www.shada.nl/nl/contact](http://www.shada.nl/nl/contact)




The item should be disposed of separately from household waste. The item should be handed in for recycling in accordance with local environmental regulations for waste disposal. By separating a marked item from household waste, you will help reduce the volume of waste sent to incinerators or land-fill and minimize any potential negative impact on human health and the environment.



This product carries the CE mark of certification, which confirms that this product meets EU safety, health and environmental protection requirements.



Hierbij verklaard Shada dat 140305 Zigbee LED Dimmer Module welke is voorzien van radioapparatuur voldoet aan richtlijn 2014/53/EU. De volledige tekst van de Europese Declaratie van Conformiteit is beschikbaar op het volgende internetadres: <https://www.shada.nl/downloads>.



D.O.C.: <http://shada.nl/p/140303>



**SHADA**

Molenmakershoek 28, NL-7328 JK APELDOORN - The Netherlands  
[www.shada.nl](http://www.shada.nl)



Art.Nr.: 140305

WEEE: NL: 3505,  
DE: 37281017,  
AT: 40133, ES: 7020

D.O.C.: <http://shada.nl/p/140303>  
[www.shada.nl](http://www.shada.nl)

### **Documents / Resources**



[idinio IDI\\_BOUWDIMMER\\_ZIGBEE Zigbee LED Dimmer Module](#) [pdf] User Guide  
IDI\_BOUWDIMMER\_ZIGBEE, Zigbee LED Dimmer Module, LED Dimmer Module, Dimmer Mo  
dule, IDI\_BOUWDIMMER\_ZIGBEE, Module