


iDevices IDEV0020 Instant Switch



iDevices IDEV0020 Instant Switch Installation Guide

[Home](#) » [iDevices](#) » iDevices IDEV0020 Instant Switch Installation Guide 

Contents

- [1 iDevices IDEV0020 Instant Switch](#)
- [2 Product Usage Instructions](#)
- [3 WHAT'S INCLUDED](#)
- [4 BEFORE YOU START](#)
- [5 USING FOR THE FIRST TIME](#)
- [6 INSTALLATION METHODS](#)
- [7 BATTERY](#)
- [8 REMOVING YOUR WALL MOUNTED INSTANT SWITCH](#)
- [9 REFERENCE INFORMATION](#)
- [10 TROUBLESHOOTING AND SUPPORT](#)
- [11 REGULATORY INFORMATION](#)
- [12 FCC Notice](#)
- [13 Documents / Resources](#)
 - [13.1 References](#)
- [14 Related Posts](#)



iDevices IDEV0020 Instant Switch



Specifications

- Power Rating: 3VDC, 5.4mA
- Replacement Battery: CR2032 ONLY

Product Usage Instructions

Before You Start

Before starting the installation and setup process, make sure you have the following:

- iDevices Instant Switch
- Replacement Battery: CR2032
- iDevices Connected app (downloaded and installed on your smartphone)

Getting to Know the iDevices Instant Switch

The iDevices Instant Switch has the following features:

1. **Turn On/Increase Brightness:** Single tap to turn on. Press and hold to increase the brightness level. Double

- tap to quickly increase light to maximum brightness. (Note: Dimmable feature only available when paired to a dimmable iDevices product)
2. **Turn Off/Decrease Brightness:** Single tap to turn off. Press and hold to decrease the brightness level. Double tap to quickly decrease light to a minimum brightness level. (Note: Dimmable feature only available when paired to a dimmable iDevices product)
 3. **Status LED:** Provides setup status. Refer to LED color codes on page 30.
 4. **3M Command™ Strip Access Door:** Remove to access 3M Command™ Strip when removing Instant Switch from the wall.
 5. **Level:** Built-in level ensures precise installation.
 6. **Instant Switch Unit Removal:** Press the sides to remove the Instant Switch from the mounting plate to access the battery.
 7. **Pairing Reset:** Press and hold for 10 seconds, until LED blinks red.
 8. **+ 1 Device Reset:** Press and hold 7+1 simultaneously for 10 seconds, then release to cycle power to the device.
 9. **Ground Wire Assembly:** Connect to Instant Switch when installing into a gang box.

Using for the First Time

Follow these steps to use the iDevices Instant Switch for the first time:

1. Remove the battery pull tab from the back of the Instant Switch and discard it.
2. The Instant Switch will automatically enter pairing mode for 30 minutes.
3. If 30 minutes have elapsed and you have not set up the Instant Switch, press the Pairing Reset button (7) to re-enter pairing mode.
4. Launch the iDevices Connected app on your smartphone.
5. The app will guide you through the setup and placement of the Instant Switch in your home.
6. Once the in-app setup is complete, follow the steps on page 12 to complete the installation.

Installation Methods

You can choose one of the following methods to install your Instant Switch:

1. **By itself on the wall:** Use the provided 3M Command™ Strip and iDevices custom faceplate or a standard rocker faceplate of your choice.
2. **Next to an existing gang box:** Use the provided 3M Command™ Strip and a multiple switch faceplate of your choice (not included).
3. **Installed directly into a gang box:** Use a standard rocker-style faceplate (not included).

Frequently Asked Questions (FAQ)

1. **What type of battery does the iDevices Instant Switch use?**

The iDevices Instant Switch uses a CR2032 battery.

2. **Can I use a different type of battery?**

No, using an improper battery may damage the iDevices Instant Switch. Please dispose of the battery at a

recycling facility and use only the recommended CR2032 battery.

3. How do I dispose of the used battery?

Dispose of used batteries according to the instructions provided by your local waste disposal provider. Contact them to find a recycling center nearest to you.

4. How do I reset the Instant Switch?

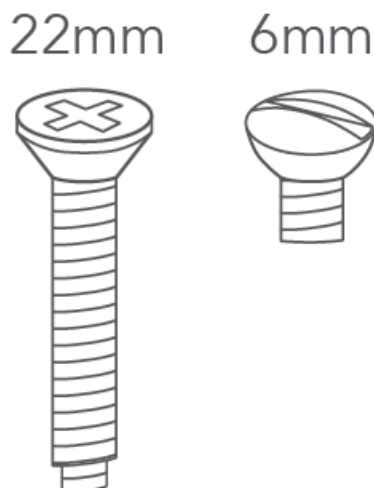
To reset the Instant Switch, press and hold the Pairing Reset button for 10 seconds until the LED blinks red. To cycle power to the device, press and hold the +1 Device Reset button simultaneously for 10 seconds, then release.

REQUIRES

- A compatible iDevices product
- iDevices Connected app
- Controlling this product requires an iPhone, iPad or iPod touch that supports Bluetooth® low energy and is running iOS 8.1 or later
- Android™ 4.3+ device with Bluetooth® low energy

WHAT'S INCLUDED

- iDevices Instant Switch with CR2032 battery (pre-Installed)
- iDevices custom faceplate
- (2) Command™ Strips from 3M
- Ground Wire Assembly
- (2) 22mm phillips screws for gang box installations
- (2) 6mm standard screws for installing standard faceplates,(not included)



- The iDevices Instant Switch must be installed in a manner that conforms to all applicable national, state, and local building codes.
- When installing with Command™ Strip from 3M, do not install above a bed, onto wallpaper, or outdoors.
- The iDevices Instant Switch is intended for dry, indoor use only.
- Ambient operating conditions: 32° F to 104° F (0° C to 40° C), 0-90% humidity, non-condensing.
- The iDevices Instant Switch uses 1 CR2032 coin cell battery ONLY. Do not use a rechargeable battery. Using an improper battery may damage the iDevices Instant Switch. Please dispose of this battery at a recycling

facility. Contact your local waste disposal provider to find a recycle center location nearest you.

TOOLS NEEDED

When installing into a gang box, you will need the following tools:

- Philips Screwdriver
- Flathead Screwdriver

RATINGS

3 VDC, 5.4mA Replacement Battery: CR2032 ONLY

CAUTION: Risk of explosion if battery is replaced by an incorrect type. Dispose of used batteries according to the instructions.

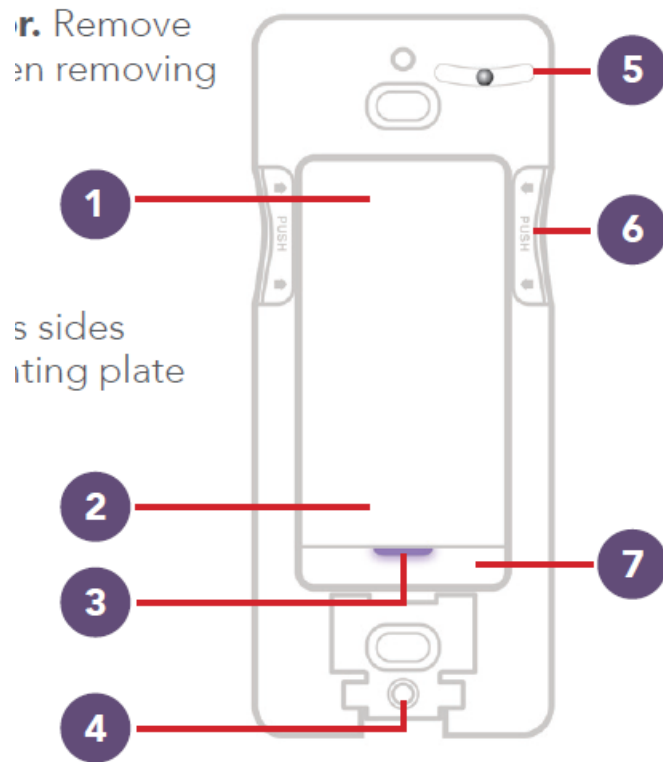
BEFORE YOU START

- The iDevices Instant Switch requires a compatible iDevices product that is running the latest firmware. Be sure that you have first setup the compatible product in your home using the iDevices Connected app before attempting to set up your Instant Switch. To find information on compatible products and how to update firmware, visit iDevicesinc.com/Compatibility/Instant-Switch
- Wherever possible, install the iDevices Instant Switch in a non-metal gang box and use a non-metal or metallic faceplate, as metal gang boxes and faceplates can decrease the Bluetooth® signal strength.
- It is YOUR responsibility to be sure that products are installed in accordance with applicable building codes. Check with your local building office if you have questions.
- If you need further help on your Instant Switch installation, please visit our support page at iDevicesinc.com/Support/Instant-Switch
- Download the free iDevices Connected app.



GETTING TO KNOW THE IDEVICES INSTANT SWITCH

1. Turn On/Increase Brightness. (Note: Dimmable feature only available when paired to a dimmable iDevices product). Single tap to turn on. Press and hold to increase the brightness level. Double tap to quickly increase light to maximum brightness.
2. Turn Off/Decrease Brightness. (Note: Dimmable feature only available when paired to a dimmable iDevices product). Single tap to turn off. Press and hold to decrease the brightness level. Double tap to quickly decrease light to minimum brightness level.
3. Status LED. Provides setup status. Refer to LED color codes on page 30.
4. 3M Command™ Strip Access Door. Remove to access 3M Command™ Strip when removing Instant Switch from wall.



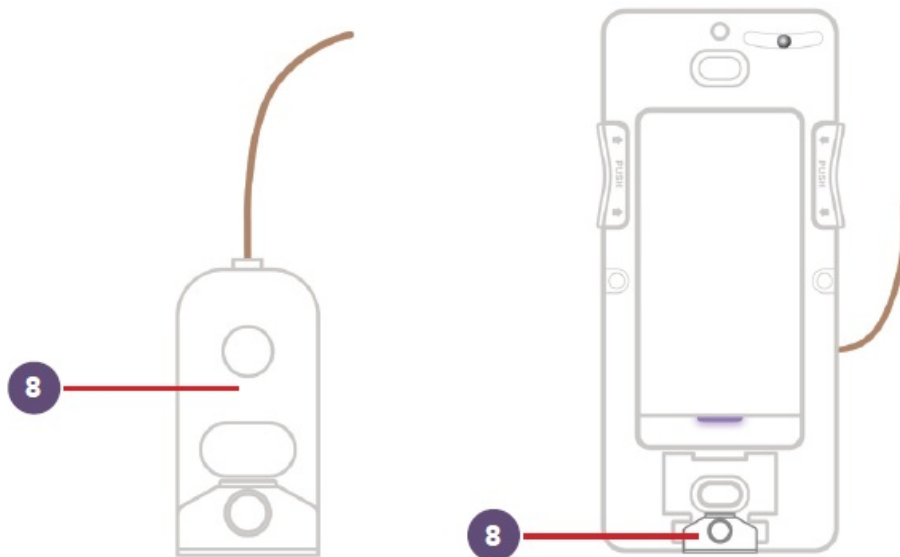
5. Level. Built-in level ensures precise installation.

6. Instant Switch Unit Removal. Press sides to remove Instant Switch from mounting plate to access battery.

7. Pairing Reset. Press and hold for 10 seconds, until LED blinks red.

1. Device Reset. Press and hold 7+1 simultaneously for 10 seconds, then release to cycle power to the device.

8. Ground Wire Assembly. Connect to Instant Switch when installing into a gang box.



USING FOR THE FIRST TIME

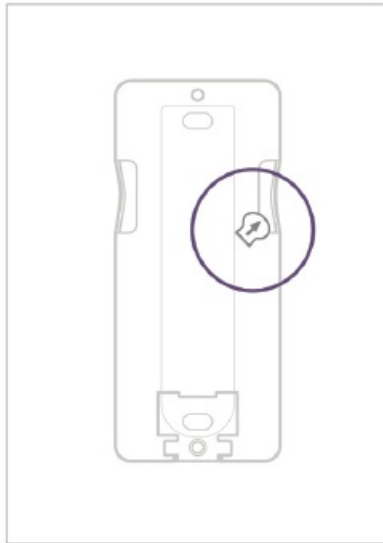
REMOVE BATTERY PULL TAB

- Before using the iDevices Instant Switch for the first time, you will need to remove the battery tab. Pull the plastic tab out from the back of the product and discard.
- Once the battery tab is removed, the Instant Switch will automatically enter pairing mode for 30 minutes.

NOTE: If 30 minutes have elapsed and you have not setup the Instant Switch, you will need to press the Pairing

Reset button 7 to re-enter pairing mode.

- Next, launch the iDevices Connected app. The app will guide you through setup and placement of the Instant Switch in your home.
- Once the in-app setup is complete, follow the steps on page 12 to complete the installation.

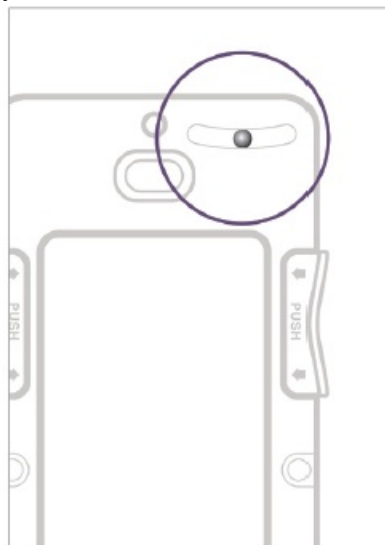


INSTALLATION METHODS

There are 3 methods in which you may install your Instant Switch:

1. By itself on the wall, using the provided 3M Command™ Strip and iDevices custom faceplate or a standard rocker faceplate of your choice.
2. Next to an existing gang box, using the provided 3M Command™ Strip and a multiple switch faceplate of your choice (not included).
3. Installed directly into a gang box using a standard rocker style faceplate (not included).

Whichever method you choose, ensure your iDevices Instant Switch is installed perfectly by using the built-in level.

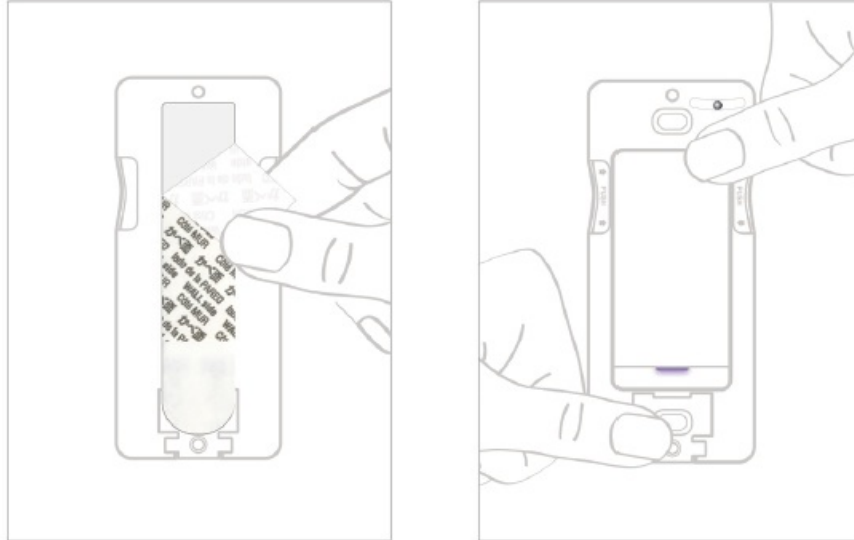


INSTALL ON A WALL

- To mount your Instant Switch directly onto a wall, first thoroughly clean the wall's surface with isopropyl alcohol

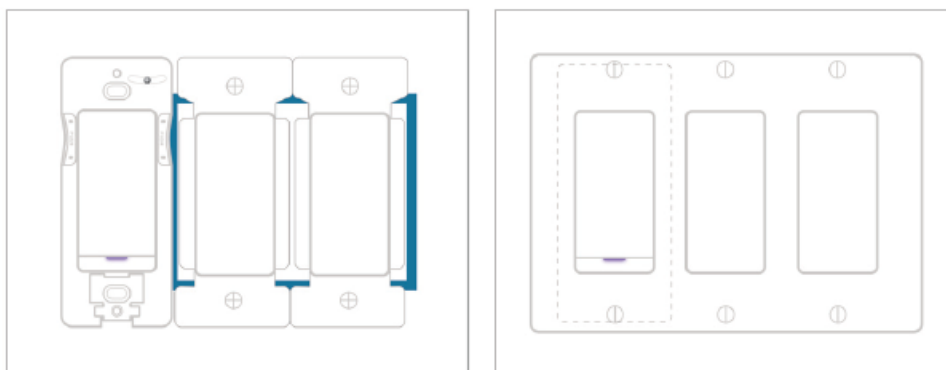
to remove any dirt or dust.

- Remove the plastic backing to the Command™ Strip and align the strip with the recessed area on the back of the Instant Switch.
- Peel off the other side of the plastic backing and ensure that the product is level before pressing firmly to the wall. Hold for 30 seconds.
- Install the magnetic iDevices faceplate, or a rocker style faceplate of your choice. If the faceplate you choose requires screws, use the shorter, 6mm screws provided to anchor the faceplate to the Instant Switch.



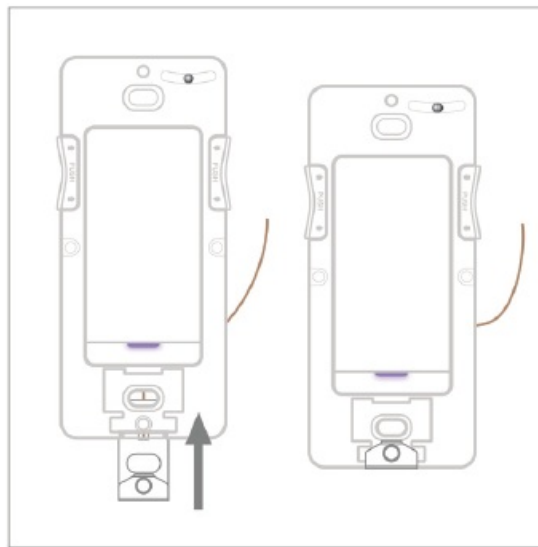
INSTALL NEXT TO GANG BOX

- Install the 3M Command™ Strip onto the back of the Instant Switch.
- Mount the faceplate onto the Instant Switch using the provided 6mm screws.
- Peel off the plastic backing of the 3M Command™ Strip.
- Carefully line up your faceplate with the existing wall switches and press to the wall for 30 seconds.
- Install the remaining faceplate screws into the adjacent wall switch(es).

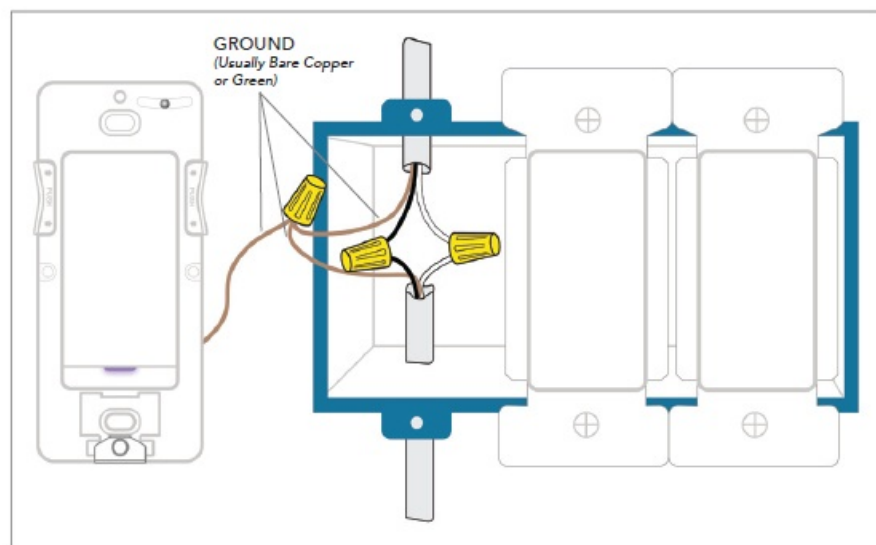


INSTALL INTO GANG BOX

- Turn OFF the power to the circuit you are working on at your home's breaker or fuse panel.
- Install the ground wire assembly onto the access door of the Instant Switch.

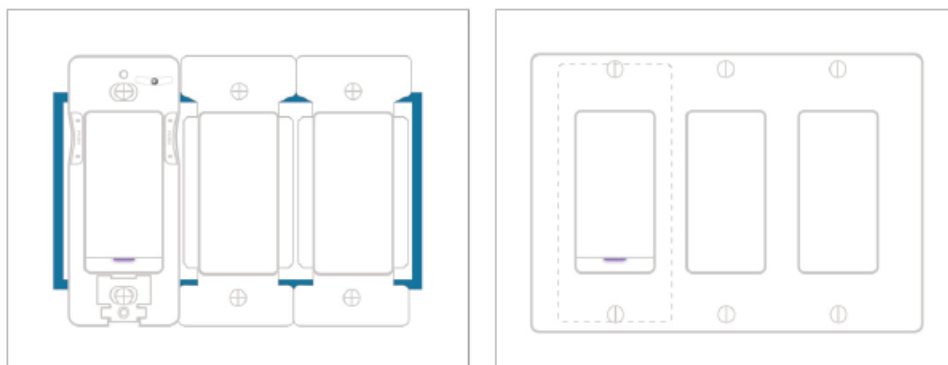


- Connect the ground wire on the Instant Switch to the ground wire in the gang box, which is usually bare copper or green.



- If you choose this method of installation, do not use the 3M Command™ Strip on the back of the product. Instead, use the longer, 22mm screws provided to mount it onto the gang box.
- Install a rocker switch faceplate (not included) using the shorter, 6mm screws provided to anchor the faceplate to the Instant Switch.
- Turn the power back ON at your circuit breaker.

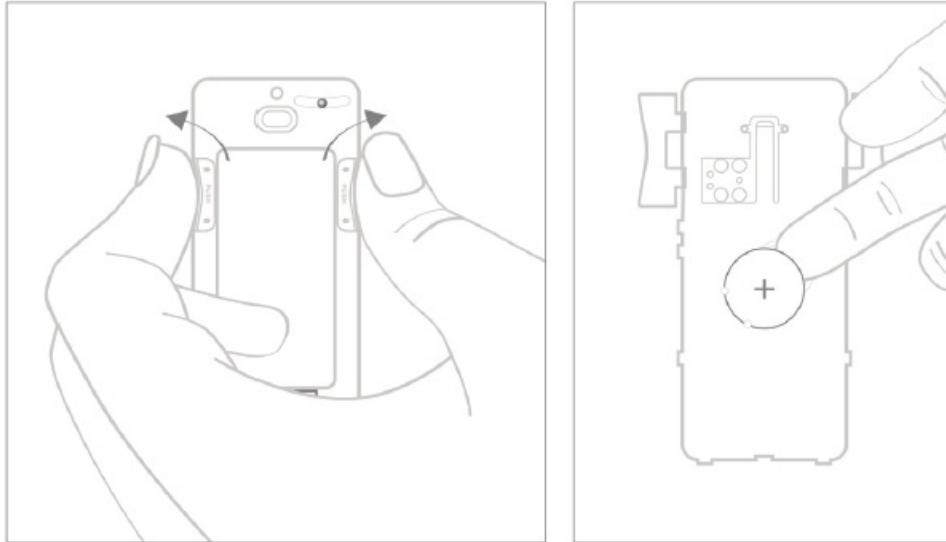
NOTE: It is not intended to use the iDevices faceplate when mounting the iDevices Instant Switch in a gang box. Instead, use a standard rocker faceplate of your choice (not included).



BATTERY

REPLACING BATTERY

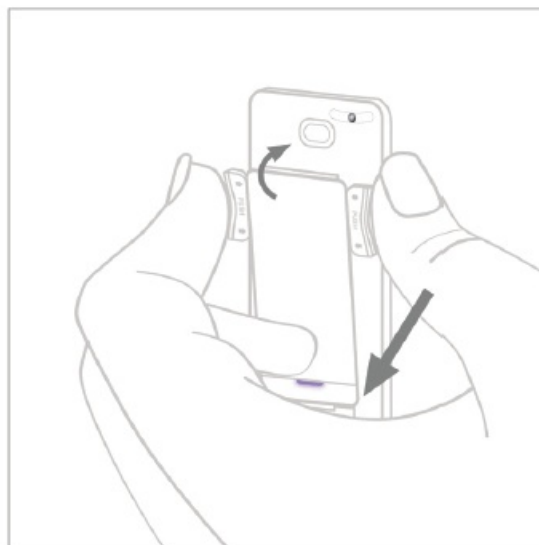
- The iDevices Instant Switch uses a standard CR2032 battery ONLY, and lasts up to 2 years.
- Access the battery by pressing the module assembly in where noted and tilting the top toward you to remove from the mounting plate.
- After the module assembly has been removed, the battery will be visible on the back.
- Remove the battery by inserting your finger into the notch and pulling it toward you.
- When replacing the battery, be sure to install with the positive side (+) facing out, so it is visible.



REPLACING THE MODULE ASSEMBLY

- Line up the tabs on the bottom of the module assembly with the arrows on the bottom of the mounting plate.
- Tilt the top of the module assembly up and press it firmly until it clicks into place.

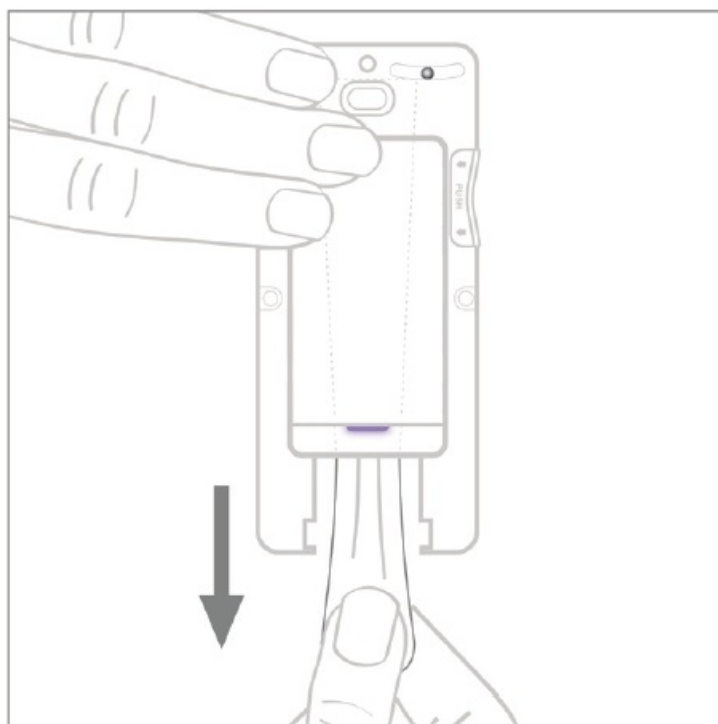
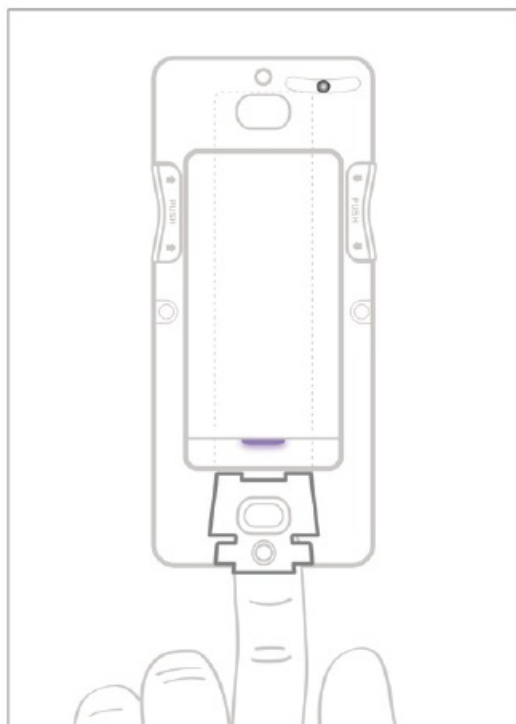
CAUTION: Risk of explosion if battery is replaced by an incorrect type. Dispose of used batteries according to the instructions.



REMOVING YOUR WALL MOUNTED INSTANT SWITCH





- Remove the access door to expose the end of the 3M Command™ Strip.





- Pull straight down on the end of the 3M Command™ Strip, while holding Instant Switch firmly against the wall.
NOTE: Be sure to pull straight down, as pulling at an angle risks breaking the 3M Command™ Strip.



REFERENCE INFORMATION

LED COLOR CODES

LED State	Instant Description
 Blue Flash	Instant Switch is in pairing mode. The LED flashes blue .
 Solid Blue	Pairing mode has been completed. The LED will turn solid blue .
 Green Flash	When the product setup or software update is complete, the LED flashes green 5 times .
 Solid Yellow	On button press, if battery is low, the LED will turn solid yellow for 2 seconds .

LED State	Instant Description
 Red Flash	On button press, if battery needs replacement, the LED will rapidly flash red 5 times.
 Solid Red	On button press, if Instant Switch has lost the link with its paired iDevices product, the LED will turn solid red for 5 seconds.
 White Flash	When Instant Switch powers on, it will flash white. After 30 seconds, it will resume a standby mode, and when pressed again, it will flash white.
 Purple Flash	When Instant Switch is performing a software update, it flashes purple.

SUPPORT

If at any time you require assistance, please contact our Customer Experience Team.

- 888.313.7019
- Support@iDevicesinc.com
- iDevicesinc.com/Support

TROUBLESHOOTING AND SUPPORT

A DEVICE RESET CAN RESOLVE MOST ISSUES.

Device Reset. Press and hold 7+1 simultaneously for 10 seconds, then release to cycle power to the device.

REGULATORY INFORMATION

Product Information:

- **Manufacturer:** iDevices LLC
- **Model:** IDEV0020
- **FCC:** 2ABDJ-IDEV0020
- **IC:** 11569A-IDEV0020

The iDevices Instant Switch IDEV0020 is certified to comply with applicable FCC and IC rules and regulations governing RF and EMI emissions.

This device complies with Part 15 of the FCC Rules. Operation is subject to the following two conditions: (1) This device may not cause harmful interference, and (2) This device must accept any interference received, including interference that may cause undesired operation.

FCC Notice

This equipment has been tested and found to comply with the limits for a Class B digital device, pursuant to Part 15 of the FCC Rules. These limits are designed to provide reasonable protection against harmful interference in a residential installation.

This equipment generates, uses, and can radiate radio frequency energy and, if not installed and used in

accordance with the instructions may cause harmful interference to radio communications. However, there is no guarantee that interference will not occur in a particular installation. If this equipment does cause harmful interference to radio or television reception, which can be determined by turning the equipment off and on, the user is encouraged to try to correct the interference by one or more of the following measures:

- Reorient or relocate the receiving antenna.
- Increase the separation between the equipment and receiver.
- Connect the equipment into an outlet on a circuit different from that to which the receiver is connected.
- Consult the dealer or an experienced radio/TV technician to help.
- Changes or modifications not expressly approved by the party responsible for compliance could void the user's authority to operate the equipment.

IC Notice

This Class B digital apparatus complies with Canadian ICES-003.

This device complies with the Industry Canada license exempt RSS standard(s). Operation is subject to the following two conditions: (1) this device may not cause interference, and (2) this device must accept any interference, including interference that may cause undesired operation of the device.

CAUTION: To reduce the risk of overheating and possible damage to other equipment, do not install to control a receptacle, a motor-operated appliance, a fluorescent lighting fixture, or a transformer-supplied appliance.

ATTENTION: Afin de reduire le risque de surchauffe et la possibilite

References


Requires the iDevices Connected app. For warranty information please visit iDevicesinc.com/Warranty.

Apple, the Apple logo, iPhone, and iPod touch are trademarks of Apple Inc., registered in the U.S. and other countries. App Store is a service mark of Apple Inc. Android is a trademark of Google Inc. Google Play and the Google Play logo are trademarks of Google Inc. The Bluetooth® word mark and logos are registered trademarks owned by the Bluetooth SIG, Inc. and any use of such marks by iDevices is under license. Other trademarks and trade names are those of their respective owners.



iDevicesinc.com

Documents / Resources

	iDevices IDEV0020 Instant Switch [pdf] Installation Guide IDEV0020 Instant Switch, IDEV0020, Instant Switch, Switch
---	--

References

-  [The Next Generation Of Connected Home Products | iDevices](#)
-  [Manual-Hub.com - Free PDF manuals!](#)

- [User Manual](#)

[Manuals+](#), [Privacy Policy](#)

This website is an independent publication and is neither affiliated with nor endorsed by any of the trademark owners. The "Bluetooth®" word mark and logos are registered trademarks owned by Bluetooth SIG, Inc. The "Wi-Fi®" word mark and logos are registered trademarks owned by the Wi-Fi Alliance. Any use of these marks on this website does not imply any affiliation with or endorsement.