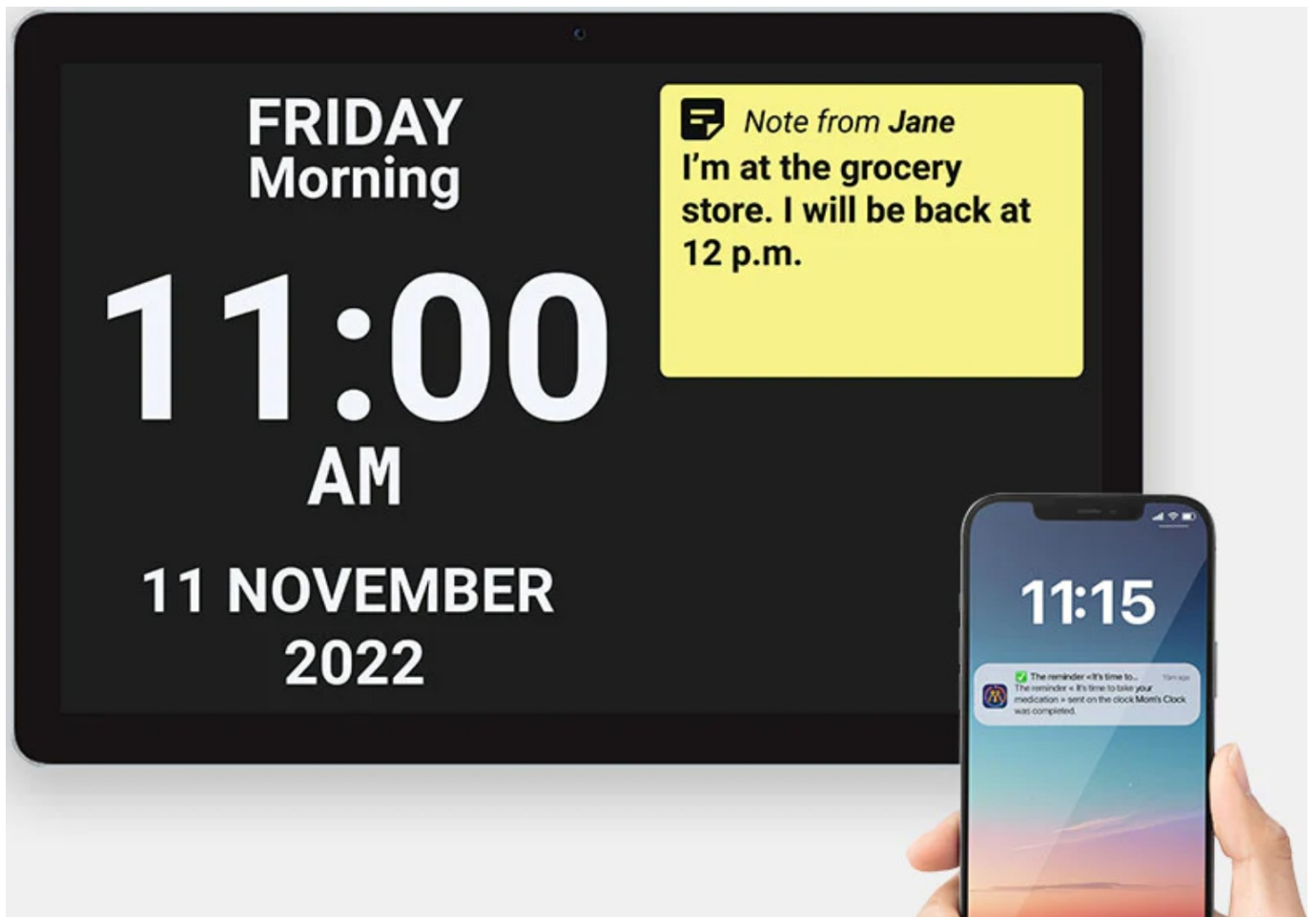


IDEM Wall Mount Clock Installation Guide

[Home](#) » [idem](#) » IDEM Wall Mount Clock Installation Guide 

IDEM Wall Mount Clock

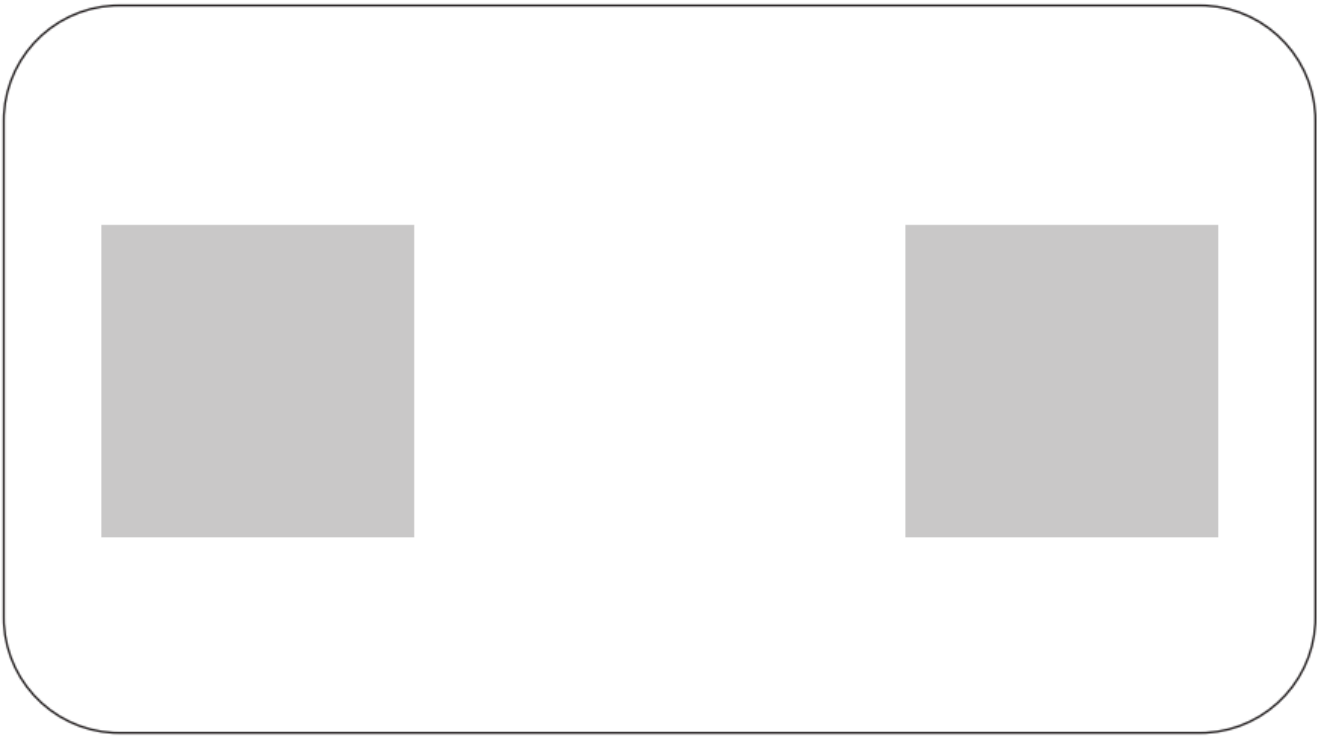


Contents

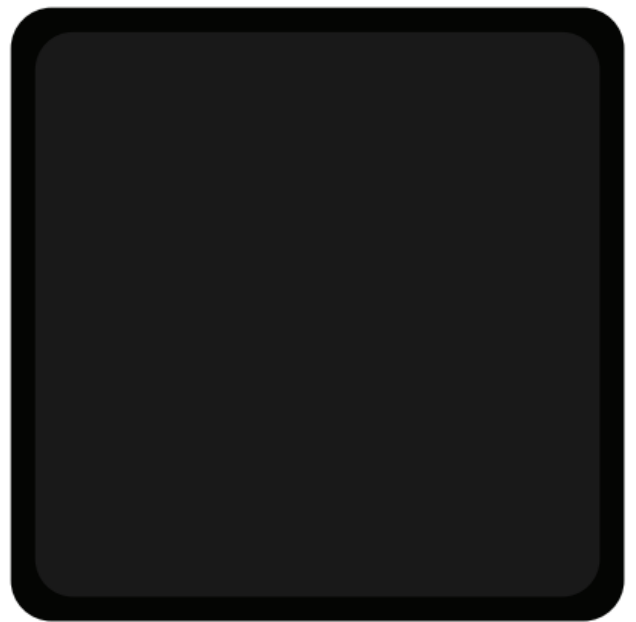
- [1 The Wall Mount Kit Includes](#)
- [2 Wall mount Installation Guide](#)
- [3 Documents / Resources](#)
 - [3.1 References](#)
- [4 Related Posts](#)

The Wall Mount Kit Includes

- 1 rectangular Idem sticker with two gray squares



- 2 square magnets



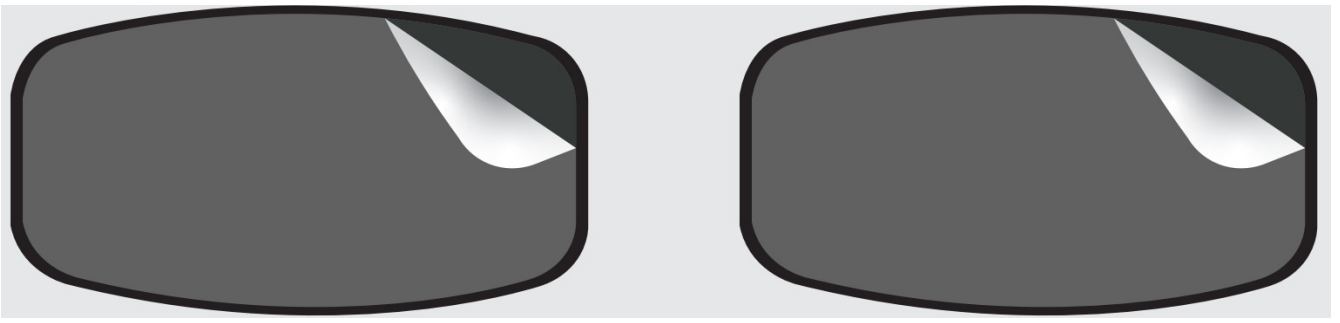
- 2 HST-magnetic rectangular black metal plates



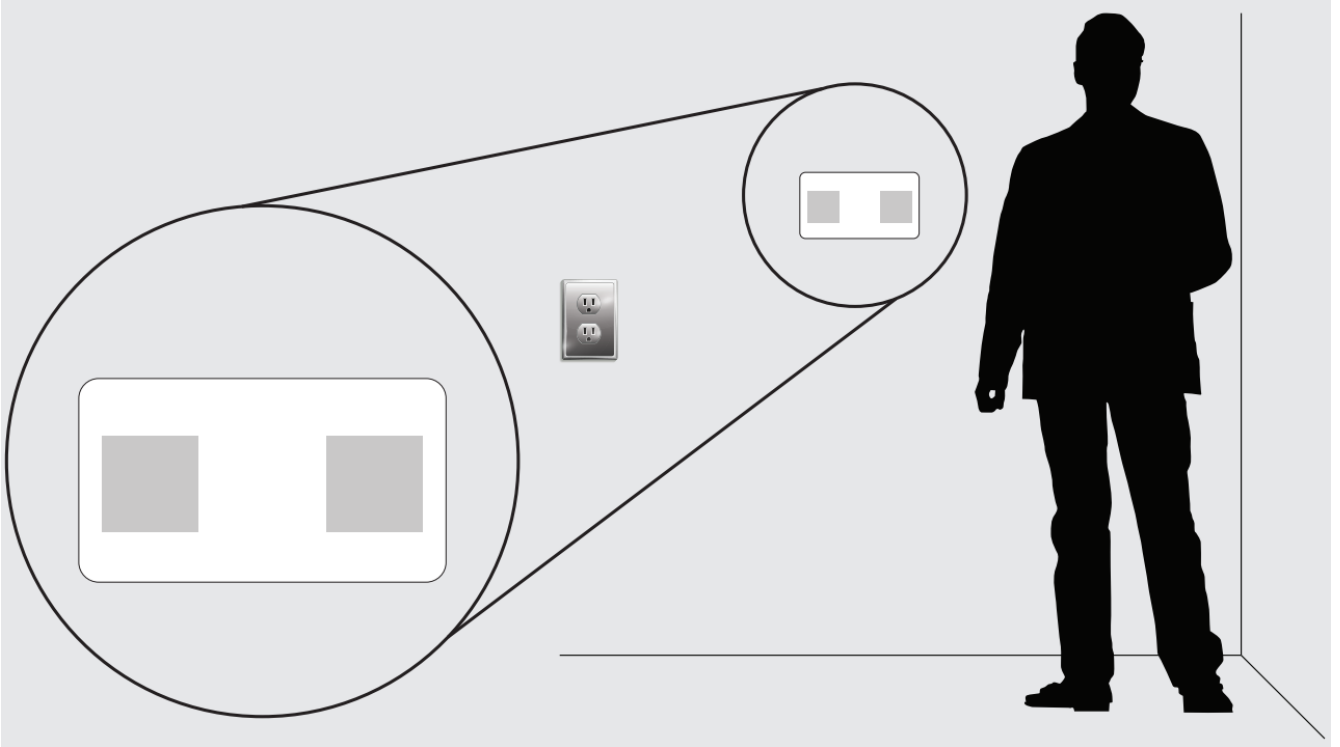
Wall mount Installation Guide

1. Remove the film and stick the 2 rectangular HST-magnetic black metal plates horizontally on the back of the clock. The image shows the suggested location.

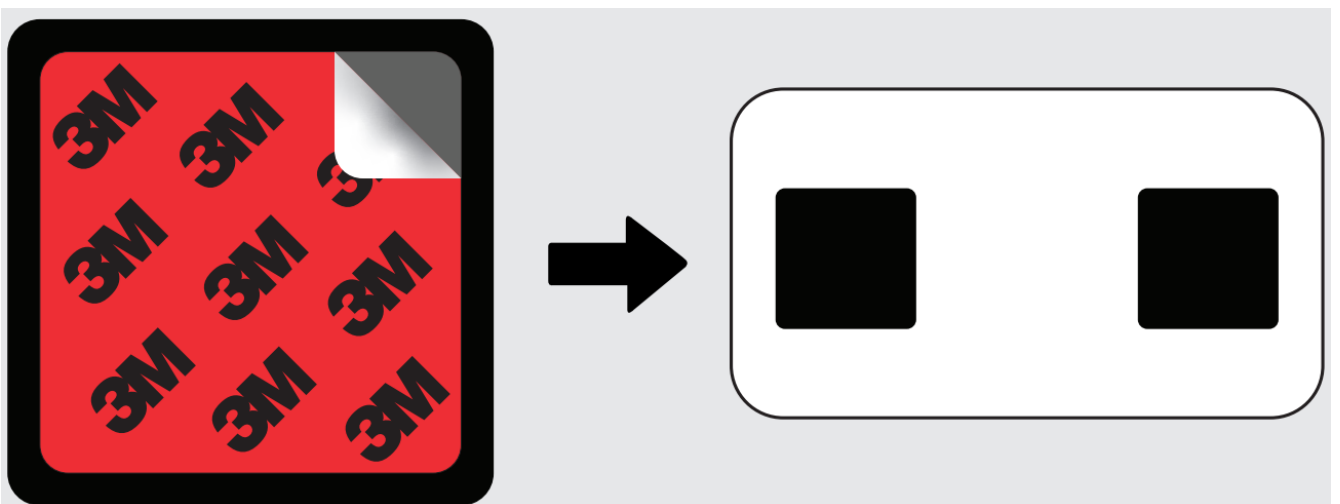




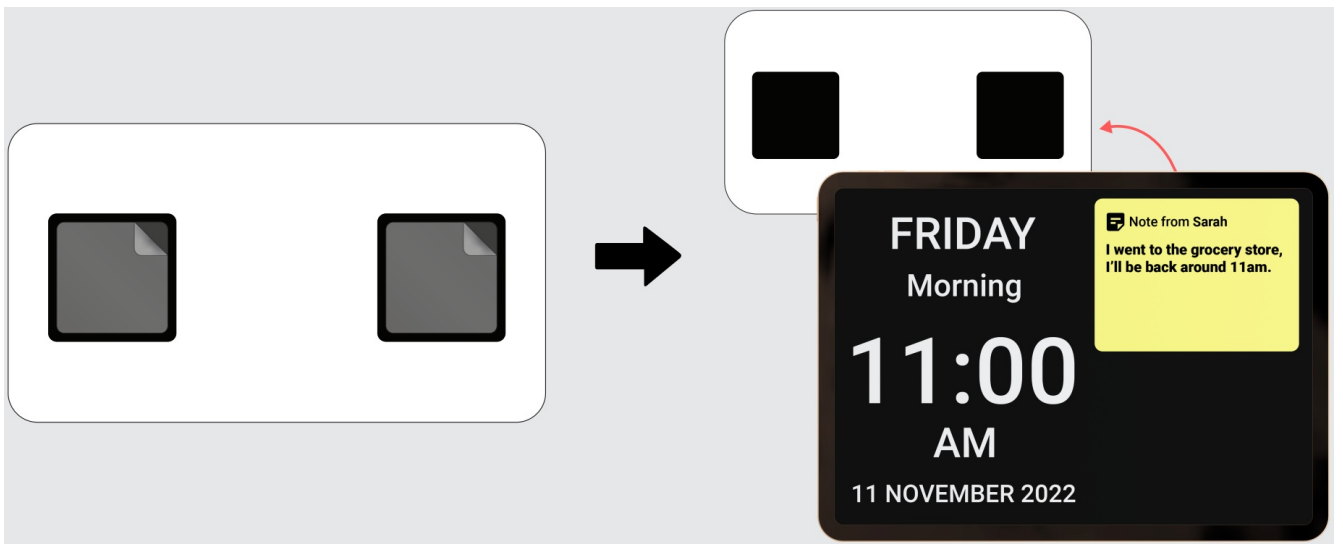
2. Determine where you want to install the clock. Make sure the location is near an electrical outlet and that the wall is clean (free of dust), then stick the protective sticker on the wall at the desired height.



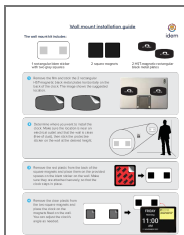
3. Remove the red plastic from the back of the square magnets and place them on the provided spaces on the Idem sticker on the wall. Make sure they are attached securely, so that the clock stays in place.



4. Remove the clear plastic from the two square magnets and place the clock on the magnets fixed on the wall. You can adjust the clock's angle as needed.



Documents / Resources



[IDEM Wall Mount Clock](#) [pdf] Installation Guide
Wall Mount Clock, Mount Clock, Clock

References

- [User Manual](#)

[Manuals+](#), [Privacy Policy](#)

This website is an independent publication and is neither affiliated with nor endorsed by any of the trademark owners. The "Bluetooth®" word mark and logos are registered trademarks owned by Bluetooth SIG, Inc. The "Wi-Fi®" word mark and logos are registered trademarks owned by the Wi-Fi Alliance. Any use of these marks on this website does not imply any affiliation with or endorsement.