

IDEC B-1369 USB Autorun Definition File Creation Tool User Manual

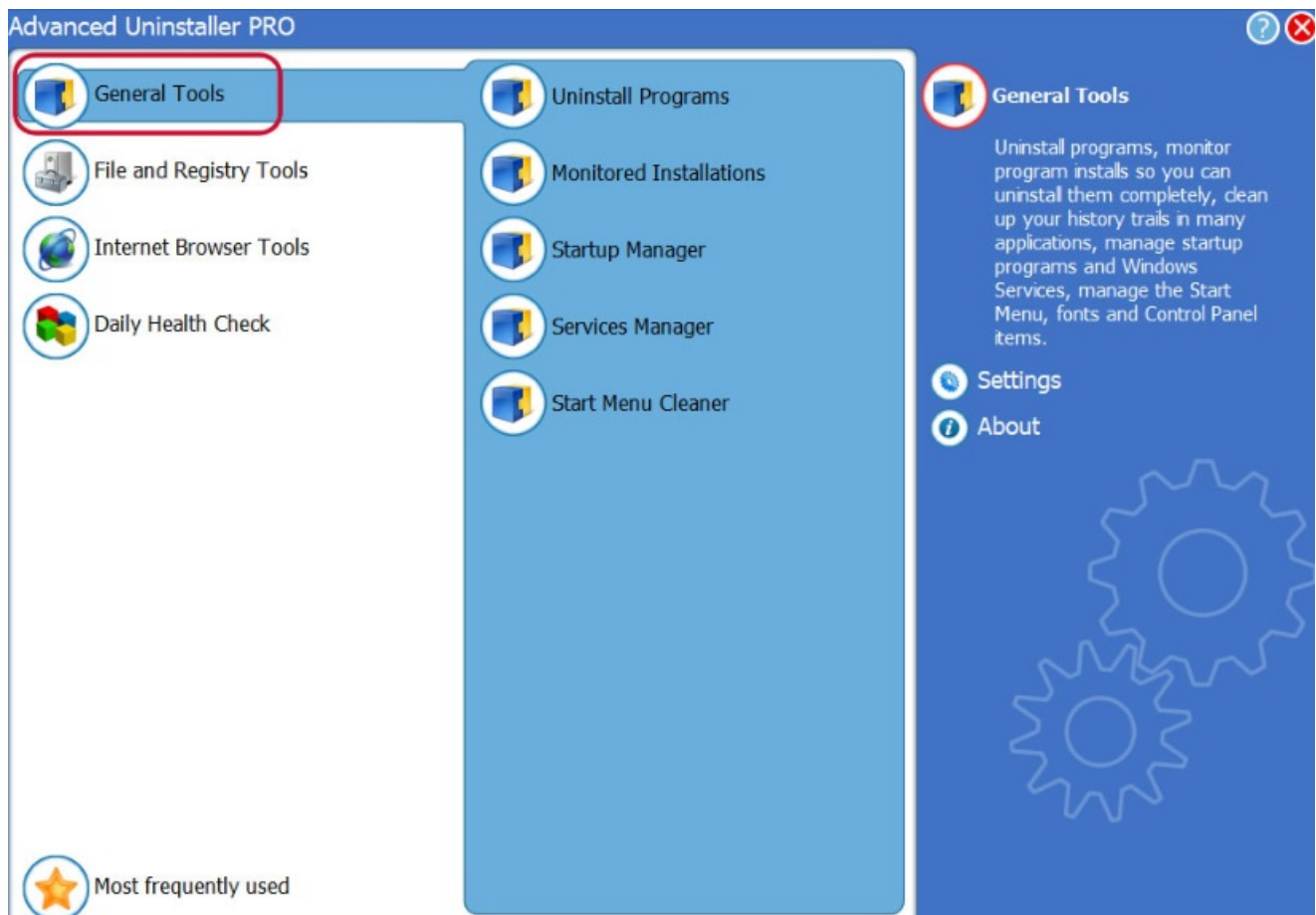
[Home](#) » [IDEC](#) » IDEC B-1369 USB Autorun Definition File Creation Tool User Manual 

Contents

- [1 IDEC B-1369 USB Autorun Definition File Creation Tool](#)
- [2 Product Information](#)
- [3 Product Usage Instructions](#)
- [4 Overview of the USB Autorun Function](#)
- [5 USB Autorun Definition File Creation Tool Menu](#)
- [6 Creating a USB Autorun Definition File](#)
- [7 Documents / Resources](#)
 - [7.1 References](#)
- [8 Related Posts](#)



IDEC B-1369 USB Autorun Definition File Creation Tool



Product Information

Specifications

- Product Name: USB Autorun Definition File Creation Tool
- Model Number: B-1369 (4)
- Compatibility: Works with USB flash drives and PCs
- Function: Creates USB Autorun definition files for executing predefined commands

Product Usage Instructions

Overview of the USB Autorun Function

The USB Autorun function automatically displays a menu screen from which the user can execute predefined commands when a USB flash drive is inserted into the main unit.

Components

- USB flash drive
- USB AutoRun definition file (hgauto.ini)
- Main unit

Creating a USB Autorun Definition File

USB Autorun Definition File Creation Procedures

1. Insert a USB flash drive into the USB port of a PC.
2. Launch the USB Autorun Definition File Creation Tool.
3. Set each item for the USB Autorun definition file as necessary. (Refer to USB Autorun Definition File Settings)
4. Click the File menu, and then click Save As to save the created file.

USB Autorun Definition File Settings

These settings allow you to define the actions and commands to be executed when the USB flash drive is inserted.

Command Settings Dialog Box

The Command Settings Dialog Box enables you to specify detailed commands and actions for each menu option.

Frequently Asked Questions (FAQ)

- **Q: Can this tool be used with all types of USB flash drives?**

A: Yes, this tool is compatible with most standard USB flash drives.

- **Q: Is there a limit to the number of commands that can be defined in a single USB Autorun file?**

A: The tool allows for multiple commands to be defined in a single file, but it's recommended to keep it concise for better usability.

USB Autorun Definition File Creation Tool User's Manual

SmartAXIS FT2J-7U

MICRO/I HG2J-7U, HG5G/4G/3G/2G-V, HG4G/3G, HG2G-5F/-5T, HG1G/1P

Preface

USB Autorun definition files that are required when using the USB Autorun function can easily be created by using the USB Autorun Definition File Creation Tool.

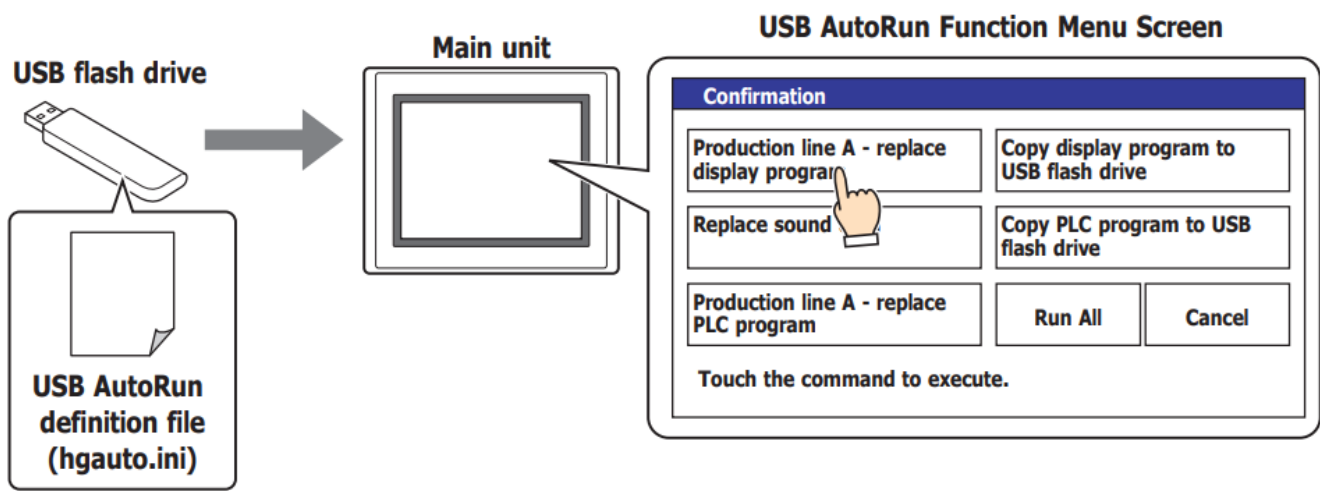
For details about the USB Autorun function, refer to the WindO/I-NV4 User's Manual.

Revision history

- June 2011: First Edition
- June 2013: Second Edition
- December 2019: Third Edition
- January 2022: Fourth Edition
- September 2023: Fifth Edition

Overview of the USB Autorun Function

The USB Autorun function automatically displays a menu screen from which the user can execute predefined commands when a USB flash drive is inserted into the main unit.



- These defined processes are called commands, and the file that contains the details of the command and menu screen is called the USB Autorun definition file (hgauto.ini).
- A USB Autorun definition file (hgauto.ini) must be stored on a USB flash drive to use the USB Autorun function.

USB Autorun Definition File Creation Tool Menu

The commands that can be executed from the menu are as follows.

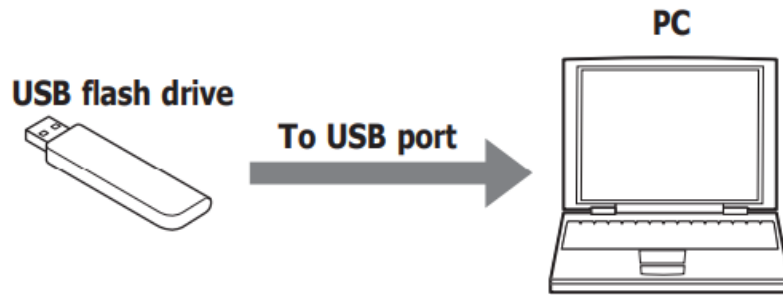
Menu	Command	Details
File	New	Discards the USB Autorun definition file that is currently being edited and creates a new USB Autorun definition file.
	Open	Opens a USB Autorun definition file that has finished being created.
	Save	Saves over the USB Autorun definition file that is currently being edited.
	Save As	Names and saves the USB Autorun definition file that is currently being edited.
	Exit	Exits the USB Autorun Definition File Creation Tool.
Help	Open Help	Opens the USB Autorun Definition File Creation Tool Help.
	About the USB Autorun Definition File Creation Tool	Displays version information for the USB Autorun Definition File Creation Tool.

Creating a USB Autorun Definition File

USB Autorun Definition File Creation Procedures=

Use the following procedures to create USB Autorun definition files for a USB flash drive.

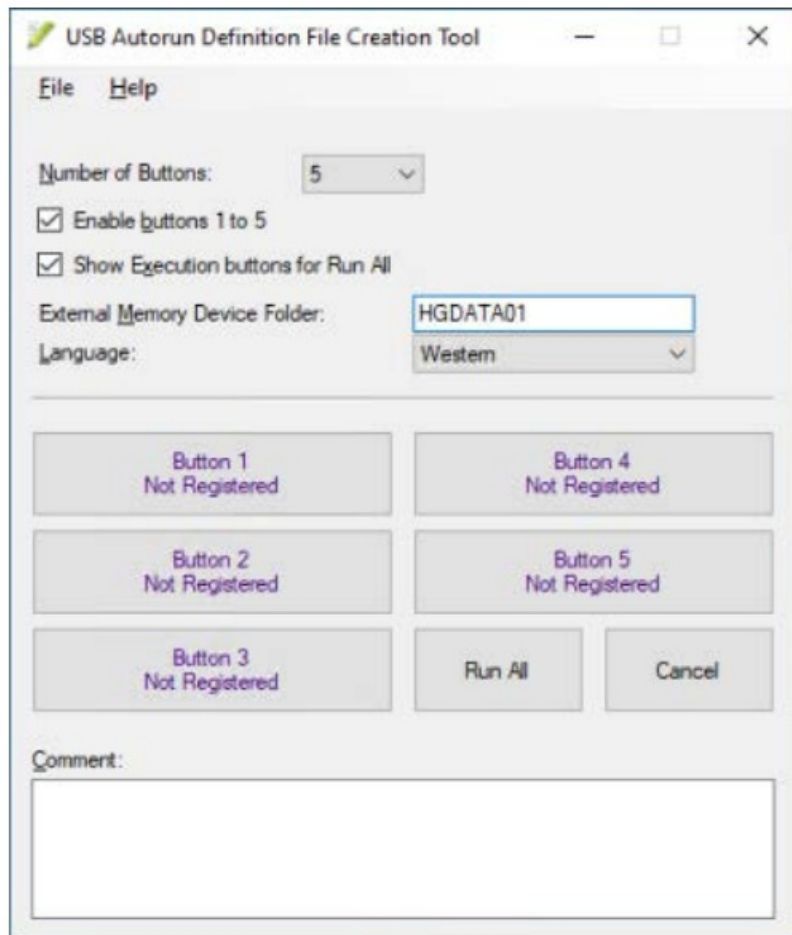
1. Insert a USB flash drive into the USB port of a PC.
- 2.



Launch the USB Autorun Definition File Creation Tool.

3. Set each item for the USB Autorun definition file as necessary.

For details, refer to “3.2 USB Autorun Definition File Settings” on page 4.



4. Click the File menu, and then click Save As.

The Save As dialog box is displayed.

5. Specify the USB flash drive, then click Save.

The USB Autorun definition file (hgauto.ini) is generated in the root folder of the USB flash drive.

USB Autorun Definition File Settings

- **Number of Buttons**

Specifies the number of buttons (1 to 5) to create.

- **Enable buttons 1 to 5**

Select this to enable buttons 1 to 5.

When cleared, the number of buttons that was specified in Number of Buttons will be displayed but they will not execute even if pressed.

- **Show Execution Buttons for Run All**

Select this to show the Run ALL button.

- **External Memory Device Folder**

Enter the name of the External Memory Device Folder. Maximum number is 8 characters.

- **Language**

Select language for the button labels and messages from the following choices.

Japanese, Western, Simplified Chinese, Traditional Chinese, Hangul, Central European, Baltic, Cyrillic

- **Button 1 to Button 5**

Pressing a button sets or changes a command that will be executed.

Click this button to open the Command Settings dialog box. Set the command to be executed by the button. If the selected button has already been set, the command that will be set can be changed. For details, refer to “3.3 Command Settings Dialog Box” on page 5.

Entering a Title in the Command Settings dialog box will display the label for the button.

- **Run All button**

This button executes in order, all defined commands for the USB Autorun definition file (hgauto.ini). This will be displayed only when Show Execution Buttons for Run All is selected.

- **Cancel button**

The button that closes the menu screen for the USB Autorun function. It is always displayed.

- **Comment**

Enter a comment using 6 lines of 54 characters (total 324 characters) or less.

- A line feed will automatically be added but can be added where desired. When added in a desired location, \n will be inserted automatically and is thus calculated as 2 single-byte characters.
- When using a semicolon (;), backslash (\), or double quotations (“), an escape character (\) will be automatically inserted before those characters and will thus be calculated as 2 single-byte characters.

Command Settings Dialog Box

Sets commands that will be executed when button 1 to button 5 have been pressed.

Command Settings

Button 1

Title: Production line A - replace display program

Command: Download Project

Source: USB Flash Drive or USB2

Path: HGDATA01\#NVDATA\#HG3G_DEMO_1.ZNV

External Memory Device Folder

Destination: MICRO/I

☐ Clear Keep Devices

☒ After downloading, execute the ladder programs automatically

OK Cancel

- **Button**

The number of the selected button will be displayed.

- **Title**

Enter a title for the button label using 2 lines of 26 characters (total 52 characters) or less.

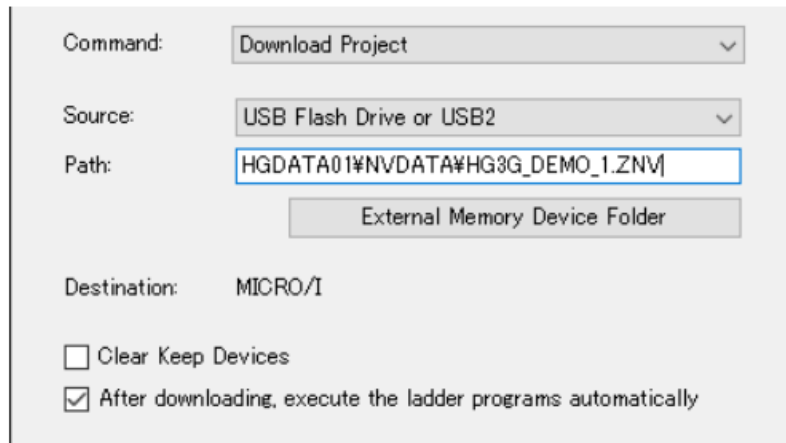
- A line feed will automatically be added but can be added where desired. When added in a desired location, \n will be inserted automatically and is thus calculated as 2 single-byte characters.
- When using a semicolon (;), backslash (\), or double quotations ("), an escape character (\) will be automatically inserted before those characters and will thus be calculated as 2 single-byte characters.

- **Command**

- Select a command to execute from the following:
- Download Project, Upload Project, Copy Data, Download PLC Program, Upload PLC Program
- The setting items below will be displayed according to the command that has been selected.

When Download Project has been selected

-



Source: Select either SD Memory Card or USB1 or USB Flash Drive or USB2 for the external memory to which the project file for transfer (ZNX Project File*1 or ZNV Project File) was saved.

- **Path:** Specify the file path of the project file for the transfer (.ZNX)*1. The maximum number of characters is 247. Only alphanumeric characters and symbols can be used. Path delimiters and characters that cannot be used vary based on the model.

Model	Delimiter	Characters that cannot be used
FT2J-7U, HG2J-7U	/	" # \$ & ' () * : ; < > ? \ ` ~
HG5G/4G/3G/2G-V, HG4G/3G, HG2G-5F/-5T, HG1G/1P	\	" * : ; < > ?

External Memory Device Folder: Click this button to insert a folder path to the Path indicated in the External Memory Device Folder settings. The External Memory Device Folder is set in the USB Autorun Definition File Creation Tool dialog box.

Example: When the name of the External Memory Device Folder is "HGDATA01", "HGDATA01\NVDATA\" will be inserted.

- **Destination:** Displays a download destination of the project.
- **Clear Keep Devices:** Select this check box to clear keep devices after the project data is downloaded. However, when downloading a project file with different OS version or system version or modified Data Storage Area Settings, the keep devices are always cleared.

After downloading, execute the ladder programs automatically:

Select this check box to execute the ladder program after the project download. This option can only be valid when downloading the project file for the FT2J-7U.

When Upload Project has been selected

Destination: Specifies the save destination for the projected that has been uploaded from the main unit. Select either SD Memory Card or USB1 or USB Flash Drive or USB2 for the external memory.

Path: Specify the folder path of the location where the uploaded project will be saved. The maximum number of characters is 247. Only alphanumeric characters and symbols can be used. Path delimiters and characters that cannot be used vary based on the model.

Model	Delimiter	Characters that cannot be used
FT2J-7U, HG2J-7U	/	" # \$ & ' () * : ; < > ? \ ` ~
HG5G/4G/3G/2G-V, HG4G/3G, HG2G-5F/-5T, HG1G/1P	\	" * : ; < > ?

Example: When saving a project to the "Upload_Project" folder in an external memory:

Uploaded_Project

External Memory Device Folder: Click this button to insert a folder path to the Path indicated in the External Memory Device Folder settings. The External Memory Device Folder is set in the USB Autorun Definition File Creation Tool dialog box.

Example: When the name of the External Memory Device Folder is "HGDATA01", "HGDATA01\NVDATA\" will be inserted.

When Copy Data has been selected

Source: Select either SD Memory Card or USB1 or USB Flash Drive or USB2 for the external memory copy

source.

Path: Specifies the file path for the file copy source or the folder path for the folder copy source. The maximum number of characters is 247. Only alphanumeric characters and symbols can be used. Path delimiters and characters that cannot be used vary based on the model.

Model	Delimiter	Characters that cannot be used
FT2J-7U, HG2J-7U	/	" # \$ & ' () * : ; < > ? \ ` ~
HG5G/4G/3G/2G-V, HG4G/3G, HG2G-5F/-5T, HG1G/1P	\	" * : ; < > ?

Example: When the sound file "Error.wav" has been saved in the root path of an external memory device

Error.wav

External Memory Device Folder: A drop-down menu is displayed when this button is clicked. Click an item on the drop-down menu to insert a folder path to the Path indicated in the External Memory Device Folder settings. The External Memory Device Folder is set in the USB Autorun Definition File Creation Tool dialog box. Example: When the name of the External Memory Device Folder is "HGDATA01", "HGDATA01\Folder to be created\" will be inserted.

Destination: Select either SD Memory Card or USB1 or USB Flash Drive or USB2 for the external memory copy destination.

Path: Specifies the folder path for the copy destination folder. The maximum number of characters is 247. Only alphanumeric characters and symbols can be used. Path delimiters and characters that cannot be used vary based on the model.

Model	Delimiter	Characters that cannot be used
FT2J-7U, HG2J-7U	/	" # \$ & ' () * : ; < > ? \ ` ~
HG5G/4G/3G/2G-V, HG4G/3G, HG2G-5F/-5T, HG1G/1P	\	" * : ; < > ?

Example: When saving to the "SOUND" folder in the "HGDATA01" folder on an external memory device
HGDATA01\SOUND

External Memory Device Folder: A drop-down menu is displayed when this button is clicked. Click an item on the drop-down menu to insert a folder path to the Path indicated in the External Memory Device Folder settings. The External Memory Device Folder is set in the USB Autorun Definition File Creation Tool dialog box. Example: When the name of the External Memory Device Folder is "HGDATA01", "HGDATA01\Folder to be created\" will be inserted.

Selection Items	Folder to be created
External Memory Device Folder	HGDATA01\ (Inserted to the root folder of a USB flash drive)
Alarm Log Files	ALARMLOG
Data Log Files	DATALOG
Operation Log Files	OPERATIONLOG
Screenshots	CAPTURE
Recipe Files	RECIPE
Picture Files used by MICRO/I	PICTURE
Sound Files used by MICRO/I	SOUND
ZNV/ZNX Project Files	NVDATA
ZLD Project Files	LDRDATA
Movie Files	MOVIE
Recorded movie files	RECORD

When Download PLC Program has been selected

Command: Download PLC Program

Source: USB Flash Drive or USB2

Path:

External Memory Device Folder

Destination:

Interface: COM1

Slave Number: 0

Source: Select either SD Memory Card or USB1 or USB Flash Drive or USB2 for the external memory to which the PLC program file for transfer (.ZLD) was saved.

Path: Specifies the file path for the PLC program file for transfer (.ZLD). The maximum number of characters is 247. Only alphanumeric characters and symbols can be used. Path delimiters and characters that cannot be used vary based on the model.

Model	Delimiter	Characters that cannot be used
FT2J-7U, HG2J-7U	/	" # \$ % & ' () * : ; < > ? \ ` ~
HG5G/4G/3G/2G-V, HG4G/3G, HG2G-5F/-5T, HG1G/1P	\	" * : ; < > ?

Example: When the PLC program file “LDR_PROGRAM.ZLD” has been saved to the “LDRDATA” folder on an external memory device

LDRDATA\LDR_PROGAM.ZLD

External Memory Device Folder: Click this button to insert a folder path to the Path indicated in the External Memory Device Folder settings. The External Memory Device Folder is set in the USB Autorun Definition File Creation Tool dialog box.

Example: When the name of the External Memory Device Folder is “HGDATA01”, “HGDATA01\LDRDATA\” will be inserted.

- Destination: Interface: Selects the main unit port that is connecting the PLC from the following.
- COM1, COM2, Ethernet
- Slave Number: Specify the Slave Number (0 to 31) of the download destination PLC.
- This option can only be set when COM1 or COM2 is selected as the Interface.
- Specify External Device ID: Specify the external device ID (0 to 31) of the download destination PLC.
- This option can only be set when Ethernet is selected as the Interface.
- Specify IP Address: Specify the IP address and port number of the download destination PLC.
- This option can only be set when Ethernet is selected as the Interface.

When Upload PLC Program has been selected

Command: Upload PLC Program

Source: Interface: COM1
Slave Number: 0

Destination: USB Flash Drive or USB2

Path:

External Memory Device Folder

Source:

- Interface: Selects the main unit port that is connecting the PLC from the following. COM1, COM2, Ethernet
- Slave Number: Specify the Slave Number (0 to 31) of the upload source PLC.
- This option can only be set when COM1 or COM2 is selected as the Interface.
- Specify External Device ID: Specify the external device ID (0 to 31) of the upload source PLC.
- This option can only be set when Ethernet is selected as the Interface.
- Specify IP Address: Specify the IP address and port number of the upload source PLC.
- This option can only be set when Ethernet is selected as the Interface.
- Destination: Specifies the save destination for the PLC program that has been uploaded from the PLC connected to the main unit. Select either SD Memory Card or USB1 or USB Flash Drive or USB2 for the external memory.
- Path: Specifies the folder path where the uploaded PLC program file will be saved. The maximum number of

characters is 247. Only alphanumeric characters and symbols can be used. Path delimiters and characters that cannot be used vary based on the model.

Model	Delimiter	Characters that cannot be used
FT2J-7U, HG2J-7U	/	" # \$ & ' () * : ; < > ? \ ` ~
HG5G/4G/3G/2G-V, HG4G/3G, HG2G-5F/-5T, HG1G/1P	\	" * : ; < > ?

Example: When saving to the "Uploaded_Program" folder on an external memory device

Uploaded_Program

External Memory Device Folder: Click this button to insert a folder path to the Path indicated in the External Memory Device Folder settings. The External Memory Device Folder is set in the USB Autorun Definition File Creation Tool dialog box.

Example: When the name of the External Memory Device Folder is "HGDATA01", "HGDATA01\LDRDATA\" will be inserted.

For details about the created USB Autorun definition file and folder structure, refer to the WindO/I-NV4 User's Manual.

IDEC CORPORATION

Head Office 6-64, Nishi-Miyahara-2-Chome, Yodogawa-ku, Osaka 532-0004, Japan

www.idec.com



- USA IDEC Corporation
- EMEA APEM SAS
- Singapore IDEC Izumi Asia Pte. Ltd.
- Thailand IDEC Asia (Thailand) Co., Ltd.
- India IDEC Controls India Private Ltd.
- China Taiwan IDEC (Shanghai) Corporation IDEC Izumi (H.K.) Co., Ltd. IDEC
- Taiwan Corporation
- Japan IDEC Corporation

Specifications and other descriptions in this manual are subject to change without notice. Information in this manual is current as of January, 2022.

2020 IDEC Corporation, All Rights Reserved.

B-1369(4)

Documents / Resources

  USB Autorun Definition File Creation Tool User's Manual SmartXMS FT232RL MICRO11442170, MSC1461952016, MICRO15, MICRO1511, MSC147 IDEC CORPORATION	IDEC B-1369 USB Autorun Definition File Creation Tool [pdf] User Manual B1369 4, B-1369 4, B-1369 USB Autorun Definition File Creation Tool, B-1369, USB Autorun De finition File Creation Tool, Autorun Definition File Creation Tool, Definition File Creation Tool, Fil e Creation Tool, Creation Tool, Tool
---	--

References

- [User Manual](#)

Manuals+, Privacy Policy

This website is an independent publication and is neither affiliated with nor endorsed by any of the trademark owners. The "Bluetooth®" word mark and logos are registered trademarks owned by Bluetooth SIG, Inc. The "Wi-Fi®" word mark and logos are registered trademarks owned by the Wi-Fi Alliance. Any use of these marks on this website does not imply any affiliation with or endorsement.