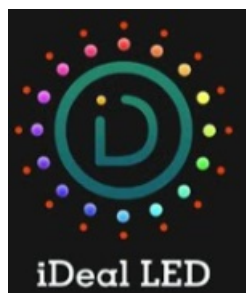


iDeal RGB LED APP Smart Pixel User Guide

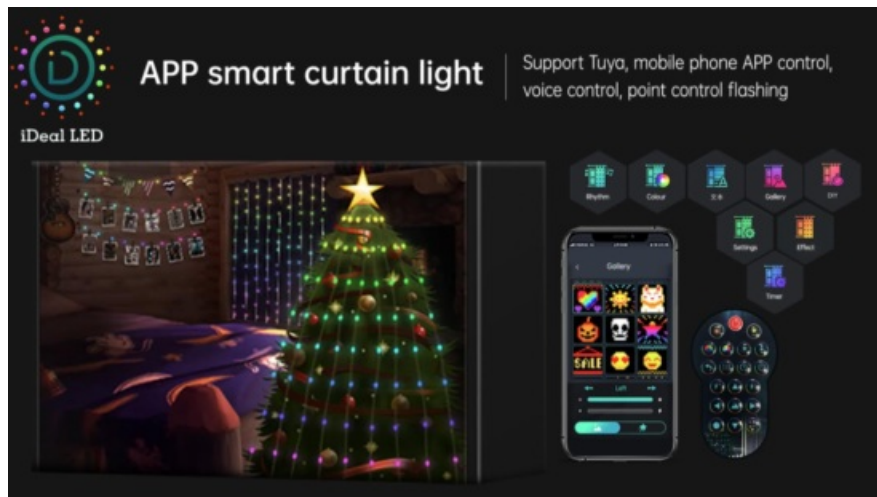
[Home](#) » [IDEAL](#) » iDeal RGB LED APP Smart Pixel User Guide 

Contents

- [1 iDeal RGB LED APP Smart Pixel](#)
- [2 Product Information](#)
- [3 Product Usage Instructions](#)
- [4 Download Methods](#)
- [5 App Authorization Permission](#)
- [6 Fcc Statement](#)
- [7 Documents / Resources](#)
 - [7.1 References](#)
- [8 Related Posts](#)



iDeal RGB LED APP Smart Pixel



Product Information

Specifications

- Product Name: iDeal LED App
- Compatibility: Mobile phones with Bluetooth capability
- Required Permissions: Location information access, Nearby device connection

Product Usage Instructions

Download Methods:

Before proceeding, ensure that Bluetooth and Location services are enabled on your mobile phone.

Method 1: QR Code Scan

Scan the QR code provided below using your mobile phone camera to download and install the iDeal LED app. Alternatively, search for “iDeal LED” on Google Play or App Store to download the app.

Method 2: Local Server Download

If you do not have access to Google Play or App Store, click on the third option to download the app from a local server.

App Authorization Permission

During installation, the app will request permission to:

- Access your location information
- Find and connect to nearby devices

Frequently Asked Questions (FAQ)

• Q: What should I do if I encounter issues with Bluetooth or Location services?

A: If you face issues with Bluetooth or Location, please ensure that both services are enabled in your phone's settings. You may also restart your device and try again.

• Q: Can I use the iDeal LED app on devices other than mobile phones?

A: The iDeal LED app is designed for use on mobile phones with Bluetooth capability. It may not be compatible with other devices such as tablets or PCs.

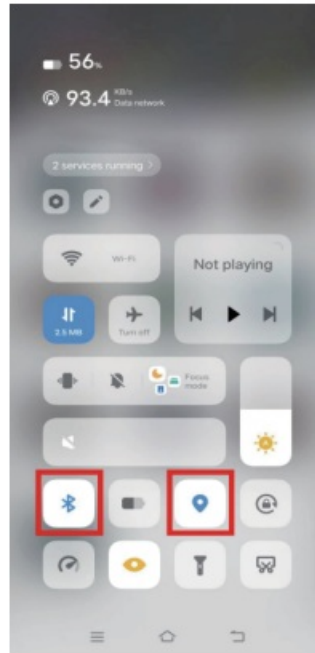
- **Q: How can I troubleshoot connectivity problems with nearby devices?**

A: To troubleshoot connectivity issues, make sure that the devices you are trying to connect to are within range and have their Bluetooth settings turned on. Restarting the app or your phone can also help resolve connectivity problems.

Download Methods

Please turn on Bluetooth and Location first.

1. Scan the QR code below to download and install app with your mobile phone, or enter Google Play/App Store and search for “iDeal LED” to download.



Scan the QR code and download the APP

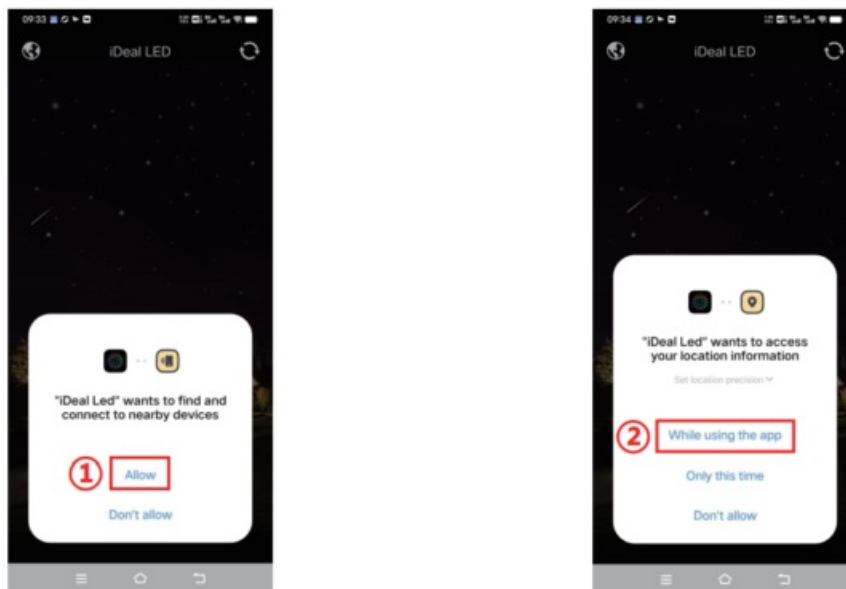


2. If you don't have App Store/Google Play, please click the third one to download from Local Server.



App Authorization Permission

1. Allow access to access your location information.
2. Allow to find and connect to nearby devices.



Fcc Statement

Warning

This device complies with Part 15 of the FCC Rules. Operation is subject to the following two conditions:

1. This device may not cause harmful interference, and
 2. This device must accept any interference received, including interference that may cause undesired operation.
- Changes or modifications not expressly approved by the party responsible for compliance could void the user's authority to operate the equipment.

NOTE: This equipment has been tested and found to comply with the limits for a Class B digital device, pursuant to Part 15 of the FCC Rules. These limits are designed to provide reasonable protection against harmful interference in a residential installation. This equipment generates, uses and can radiate radio frequency energy and, if not installed and used in accordance with the instructions, may cause harmful interference to radio communications. However, there is no guarantee that interference will not occur in a particular installation. If this equipment does cause harmful interference to radio or television reception which can be determined by turning the equipment off and on, the user is encouraged to try to correct the interference by one or more of the following measures:


- Reorient or relocate the receiving antenna.
- Increase the separation between the equipment and receiver
- Connect the equipment into an outlet on a circuit different from that to which the receiver is connected.
- Consult the dealer or an experienced radio/TV technician for help

NOTE: This device and its antenna(s) must not be co-located or operation in conjunction with any other antenna or transmitter

RF Exposure Statement

To maintain compliance with FCC’s RF Exposure guidelines, this equipment should be installed and operated with minimum distance of 20cm the radiator your body. This device and its antenna(s) must not be co-located or operation in conjunction with any other antenna nr transmitter.

Documents / Resources

 <p>The screenshot shows the 'Download Methods' section of the app. It includes a QR code and instructions for downloading the app from the App Store or Google Play. Below the QR code, there are three images showing the app interface on different devices: an iPhone, an Android phone, and a tablet.</p>	<p>iDeal RGB LED APP Smart Pixel [pdf] User Guide</p> <p>RGB LED APP Smart Pixel, RGB LED APP Smart Pixel, LED APP Smart Pixel, APP Smart Pixel , Smart Pixel, Pixel</p>
---	--

References

- [User Manual](#)

[Manuals+](#), [Privacy Policy](#)

This website is an independent publication and is neither affiliated with nor endorsed by any of the trademark owners. The "Bluetooth®" word mark and logos are registered trademarks owned by Bluetooth SIG, Inc. The "Wi-Fi®" word mark and logos are registered trademarks owned by the Wi-Fi Alliance. Any use of these marks on this website does not imply any affiliation with or endorsement.