



IDEAL In-Sure 32 Push-In Wire Connectors Instruction Manual

[Home](#) » [IDEAL](#) » IDEAL In-Sure 32 Push-In Wire Connectors Instruction Manual 

Contents

- [1 IDEAL In-Sure 32 Push-In Wire Connectors](#)
- [2 Installation Instructions](#)
- [3 Wire Range](#)
- [4 Documents / Resources](#)
 - [4.1 References](#)
- [5 Related Posts](#)



IDEAL In-Sure 32 Push-In Wire Connectors



Installation Instructions

To be sold only with installation instructions.

Warning Contact with electricity can cause electrical fires, personal injury, or death. Shut off power to the circuit before using this product and consult local building codes to determine installation requirements.

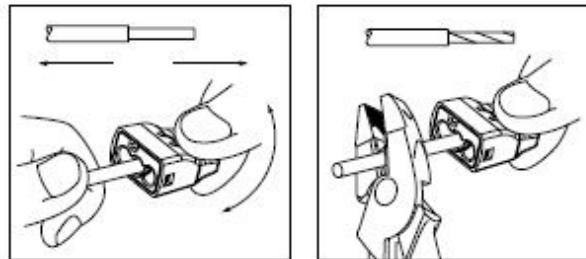
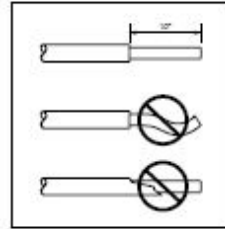
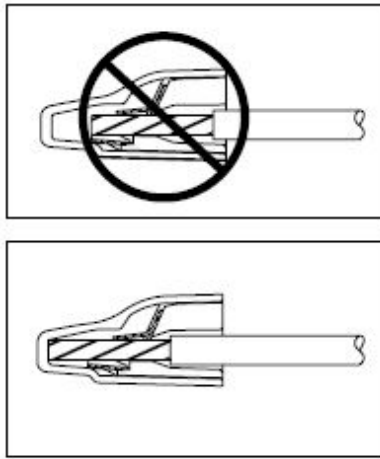
1. Wiring must comply with all applicable electrical codes.
2. Turn OFF power before removing or installing connectors.
3. Strip wires ½". Completely bare conductors.
4. Grip wire firmly and push conductor into open port. Use only one conductor per port.
5. Verify conductor is fully inserted to the back of the connector.
6. Connector is reusable on solid wires of the same wire gage or larger. If reusing connector, cut and re-strip conductors.
7. In order to remove a wire, pull and twist the wire back and forth.

DO NOT RE-USE connector on stranded wire. COPPER TO COPPER ONLY: Do Not Use on Aluminum wire.
Temperature Rating: 105°C (221°F) maximum. 600 volts maximum building wire. 1000 volts in signs and lighting fixtures. For use on insulation types TFN, TFFN, THHN, XHHW, T90 nylon or equivalent.



Wire Range


12 to 20 AWG Sol. } REUSABLE 12 to 16 AWG Str. (< 19 strands), 18 AWG Str. (7 strands) } NON-REUSABLE



In order to remove solid conductors pull and twist back and forth. For stranded wire use a new connector

IDEAL INDUSTRIES, INC. Sycamore, IL 60178, U.S.A. 800-435-0705 Customer Assistance
www.idealindustries.com ND 6779-1

Documents / Resources

 <p>IDEAL INDUSTRIES, INC. In-Sure 32, In-Sure 33, In-Sure 34 Push-In Wire Connectors</p> <p>Installation Instructions</p> <p>WARNING: These are not to be used in applications where the product is used in a manner not intended by the manufacturer. The user is responsible for the proper use of the product.</p> <ol style="list-style-type: none"> 1. Strip the wire to the correct length. 2. Insert the wire into the connector. 3. Push the wire into the connector until it is fully seated. 4. Do not pull on the wire after it is seated. 5. Do not use the connector in applications where the product is used in a manner not intended by the manufacturer. 6. Do not use the connector in applications where the product is used in a manner not intended by the manufacturer. 7. Do not use the connector in applications where the product is used in a manner not intended by the manufacturer. <p>© 2012 IDEAL INDUSTRIES, INC.</p> <p>IDEAL INDUSTRIES, INC. is a registered trademark of IDEAL INDUSTRIES, INC. All other trademarks are the property of their respective owners.</p> <p>Printed in the U.S.A.</p>	<p>IDEAL In-Sure 32 Push-In Wire Connectors [pdf] Instruction Manual In-Sure 32, In-Sure 33, In-Sure 34, Push-In Wire Connectors</p>
---	--

References

-  [Home](#)