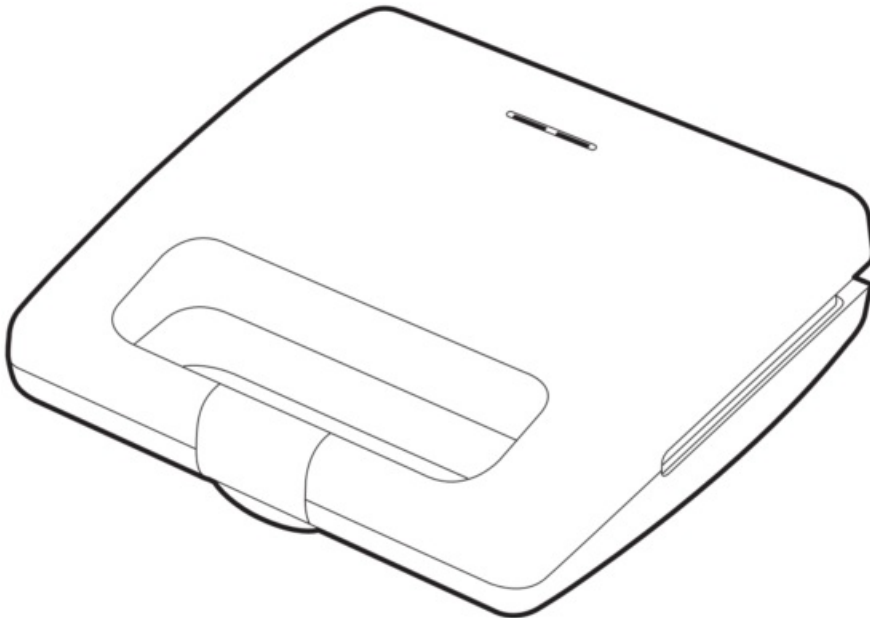




ideal IK2503 Multifunctional Toaster 3 in 1 Instruction Manual

[Home](#) » [IDEAL](#) » ideal IK2503 Multifunctional Toaster 3 in 1 Instruction Manual 

ideal IK2503 Multifunctional Toaster 3 in 1



Contents

- 1 Important Information
- 2 SAFETY INSTRUCTIONS
- 3 CLEANING AND MAINTENANCE
- 4 WARRANTY
- 5 OPERATING INSTRUCTION
- 6 TECHNICAL DATA
- 7 CUSTOMER SUPPORT
- 8 Documents / Resources
 - 8.1 References

Important Information

The disposal of used electrical and electronic equipment (applies to European Union countries and other European countries with separate waste-collection systems).



This symbol on the product or its packaging indicates that it should not be classified as household waste. It should be handed over to an appropriate company dealing with the collection and recycling of electrical and electronic equipment. The correct disposal of the product will prevent potential negative consequences for the environment and human health resulting from hazardous substances present in the product. Electrical devices must be handed over to restrict their re-use and further treatment. If the device contains batteries, remove them, and hand them over to a storage point separately. **DO NOT THROW EQUIPMENT INTO THE MUNICIPAL WASTE BIN.** Material recycling helps to preserve natural resources. For detailed information on how to recycle this product, please contact your local authority, the recycling company, or the shop where you bought it.

SAFETY INSTRUCTIONS

Before first use, please thoroughly read the entire manual.

It is recommended to keep this instructions manual for future reference.

1. Set the appliance on a flat, stable and high temperature resistant surface.
2. Always disconnect the appliance from the mains by pulling the plug, not the power cord.
3. Disconnect the appliance from the mains whenever it is not used or before cleaning it.
4. Do not immerse the cord or the appliance in water.
5. Do not hang the cord on sharp edges and do not let it touch hot surfaces.
6. Do not use in open air.
7. Do not use nearby inflammable materials such as furniture, bedding, paper, clothes, lace curtains, linings etc.
8. Do not leave children without care nearby the appliance parts of the appliance become hot when the appliance.
9. Is being used, you should hold the appliance only by the handgrip.
10. Be careful when taking out the sandwiches. Ready made sandwiches are hot and can burn.
11. Do not leave the appliance unattended when it is being used,
12. The device can be used by children aged 8 and older and by persons with limited physical, sensory or mental capabilities, or persons without sufficient experience and knowledge only under supervision or if previously instructed on the safe use of the appliance and the possible risks. Children shall not play with the appliance. Cleaning and maintenance that are the responsibility of the user shall not be carried out by children without

supervision. Protect the appliance and the power cord against children under 8 years old.

13. Pay attention to make sure that the appliance is not played with by children.
14. Do not carry or move the appliance when it is being used.
15. Do not cover the appliance when it is being used.
16. Do not put any products in metal foils into the appliance.
17. Do not grasp the appliance with wet hands.
18. The appliance is intended for household use only.
19. A very hot stream of steam may come out of the appliance when the cover is being opened do not use the appliance.
20. If the power cord has been damaged or when the appliance has fallen down or was damaged in another way. The appliance should be repaired by an authorized service shop; see the annexe or visit the site www.eldom.eu for the list of authorized service shops.
21. The appliance may be repaired only by an authorized service outlet.
22. Modernizing the appliance or using other spare parts or components for the appliance with the genuine ones is forbidden and threatens the safety of use.
23. Eldom sp. z o. o. is not responsible for any potential damages caused by improper use of the appliance.

WARNING: Improper use of the appliance may cause injury.

WARNING: Do not use a combination of different baking plates

WARNING: Plastic bag can be dangerous, to avoid danger of suffocation keep this bag away from babies and children.



This symbol warns against the high temperature of the surface of the appliance.

CLEANING AND MAINTENANCE

- Disconnect the appliance from the mains and let it cool down before cleaning it.
- Do not immerse the appliance in water or other liquids.
- First rub the heating plates with paper towels in order to remove grease. For ease of cleaning, the heating plates may be disassembled.
- Then clean the appliance and the cord gently with a wet cloth.
- Do not use cleaning agents and dissolvent.
- In case of residue which is difficult to be removed, do not use sharp tools as they can destroy coatings on the plates of the appliance. The best way to remove dirt is to cover them with a wet cloth to dissolve the residue.

WARRANTY

- This appliance is designed for domestic use only.
- It cannot be used for professional purposes or for other than the intended use.
- Improper use will nullify the guarantee.

OPERATING INSTRUCTION

GENERAL DESCRIPTION

1. Locking tab
2. Handgrip
3. Cover
4. Indicator light – power supply
5. Indicator light – thermostat
6. Removable plates



- A. sandwich plates
B. grilling plates
C. waffle plates

TECHNICAL DATA

power: 800W (max 1300W)

supply voltage: 220-240V ~ 50-60Hz

INTENDED USE

The **IDEAL IK2503 3 in 1** multifunctional toaster is able to replace up to 3 appliances, often found in modern kitchens. This is possible thanks to its 3 types of interchangeable plates, with which a traditional sandwich toaster can be transformed into a grill or a waffle maker. This is an ideal space-saving solution for the kitchen.

SETTING UP THE APPLIANCE

- Make sure that the appliance, the plug and the power cord are in order and that all parts of the packaging have been removed before you start using the appliance.

Important: The appliance may give off a smell while being used for the first time. The smell is associated with the manufacturing procedure. It is a natural process which ceases to occur after a certain period of time.

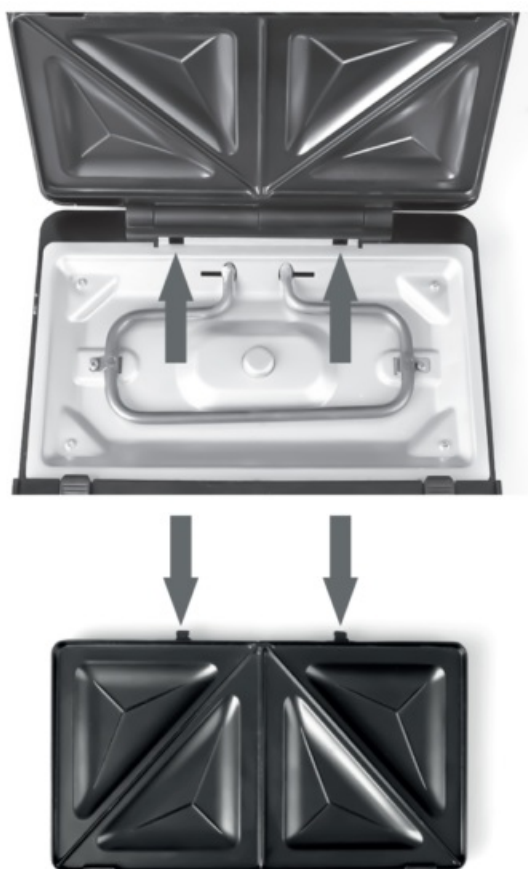
Ensure a suitable ventilation in the room, e.g. by opening a window. Use the toaster with any food products while using it for the first time.

- The appliance is equipped with 3 types of hotplates (6):
 - sandwich plates (**A**)
 - grilling plates (**B**)

- waffle plates (C)
- To remove the plates, push the buttons (photo 2).



- To insert the plates, push their lower edges into the holes in the housing – (photo 3).



USE

- Place the appliance on a flat, stable and heat-resistant surface.
- Fit the appropriate hotplates (6) and grease.

- Close the lid (3), making sure the catch (1) is properly closed.
 - Switch the appliance on to the mains in accordance with the parameters given above.
The indicator light (4) will illuminate.
 - The appliance is warming up. The indicator light (5) indicates that the appliance has reached the required temperature.
 - Prepare the products.
 - When the appliance has reached the required temperature, open the lid (3) by pulling the catch (1), place the products and close the lid (3).
- ATTENTION:** Do not put in products that are too thick. The lid (3) and the catch (1) must not close with difficulty. There is a risk of damage to the appliance.
- During cooking, the indicator lamp (5) lights up and goes out. The thermostat maintains the correct temperature.
 - Check the baked state of the products by carefully opening the lid (3).
- ATTENTION:** The steam coming out of the appliance is hot – use caution!
- Remove the finished products. To avoid damaging the hotplates, use wooden or heat-resistant plastic cutlery.
 - When preparing subsequent batches of products, close the lid (3) to maintain the temperature.
 - When toasting is complete, unplug the appliance from the mains.


CUSTOMER SUPPORT

Eldom Sp. z o.o. • ul. Pawła Chromika 5a • 40-238 Katowice, POLAND
tel: +48 32 2553340 • fax: +48 32 2530412 • www.eldom.eu



ideal

Documents / Resources

	<p>ideal IK2503 Multifunctional Toaster 3 in 1 [pdf] Instruction Manual IK2503, IK2503 Multifunctional Toaster 3 in 1, IK2503, Multifunctional Toaster 3 in 1, Toaster 3 in 1, 3 in 1, in 1</p>
---	---

References

- [User Manual](#)

Manuals+. Privacy Policy

This website is an independent publication and is neither affiliated with nor endorsed by any of the trademark owners. The "Bluetooth®" word mark and logos are registered trademarks owned by Bluetooth SIG, Inc. The "Wi-Fi®" word mark and logos are registered trademarks owned by the Wi-Fi Alliance. Any use of these marks on this website does not imply any affiliation with or endorsement.