



50-2000CR LED Cob Array Holders



IDEAL 50-2000CR LED Cob Array Holders Installation Guide

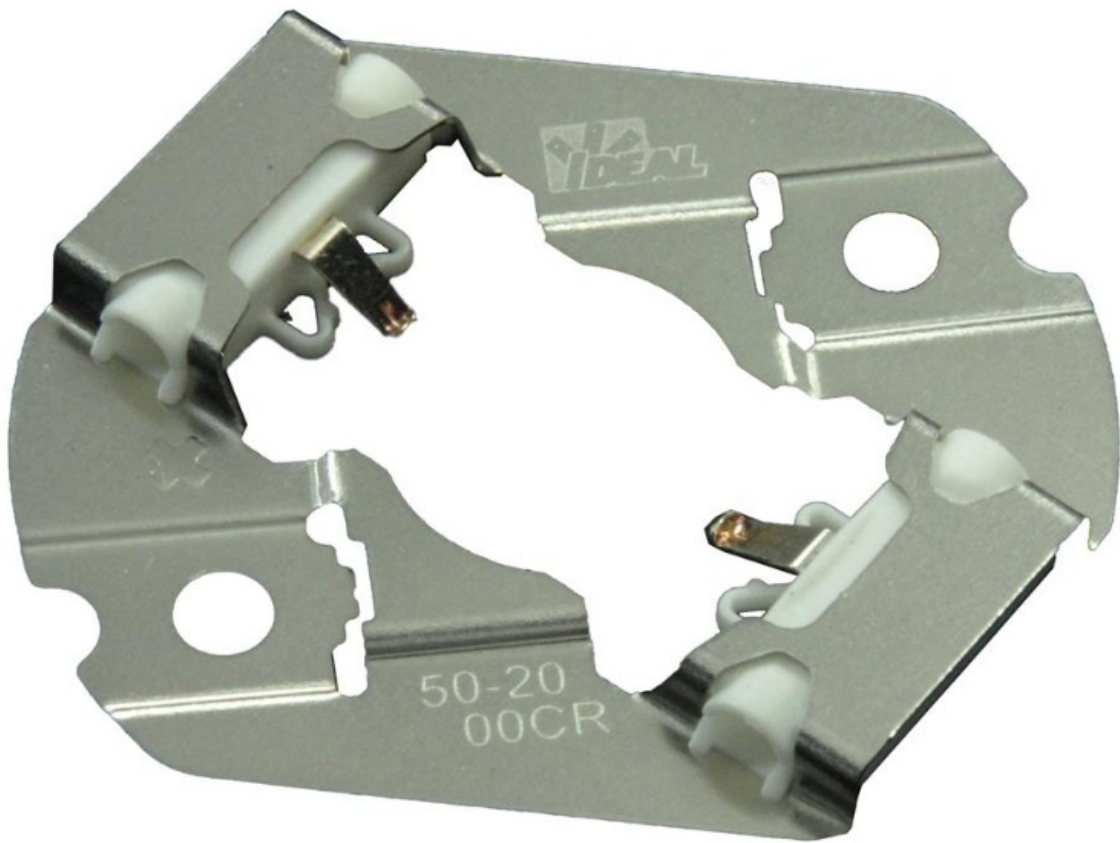
[Home](#) » [IDEAL](#) » IDEAL 50-2000CR LED Cob Array Holders Installation Guide 

Contents

- [1 IDEAL 50-2000CR LED Cob Array Holders](#)
- [2 Product Information](#)
- [3 Product Usage Instructions](#)
- [4 Wire Insertion Instructions](#)
- [5 Installation Instructions](#)
- [6 Documents / Resources](#)
 - [6.1 References](#)
- [7 Related Posts](#)



IDEAL 50-2000CR LED Cob Array Holders



Product Information

Specifications:

Model	Wire Type	Voltage	Current	Temperature
50-2000CR	Solid Tin Bonded	SELV	2A	T-110
50-2001CR	Stranded	SELV	2A	T-110

Product Usage Instructions

Wire Insertion Instructions:

1. Strip wires to 5 mm (3/16-7/32).
2. Grip wire firmly and push conductor into wire port. Do not pre-twist stranded wire. Gently pull conductor to ensure proper insertion. Repeat with other wire.
3. Use only one conductor per port and assure that no copper is exposed on any of the wires inserted.
4. Use only one wire per electrical cartridge.

LED Array Installation:

1. Hold the LED array in one hand and the luminaire in the other hand.
2. Locate and align the + marking on both products.
3. Set LED array so that the corner of array fits into one set of retention legs.
4. Push the array toward retention legs and down to seat into other set of retention legs.
5. Apply thermal paste/pad to array or heatsink (Max. pad thickness of 0.5mm).

6. Align Holder/Array assembly over screw holes in heat. Never install holder without COB array.

Warning: Energizing luminaire without COB array installed could cause electrical shorting to heatsink.

FAQ:

- **Q: Can I use stranded wire for all models?**

A: No, please refer to Table 1 for the recommended wire types for each model.

- **Q: What should I do if copper is exposed on the inserted wires?**

A: Ensure that no copper is exposed on any of the wires inserted to prevent any electrical issues.

WARNING

Electrical Shock Hazard.



Contact with high voltage may cause falling, serious injury, or death. Disconnect power before servicing. Never install holder without COB array. COBs manufactured by Edison, Lextar, LG Innotek and Osram have exposed live components; use in Class 2 or SELV applications only unless Luminaire provides sufficient electrical protection.

Electrical Fire Hazard.

Use in application exceeding voltage and current ratings listed can cause an electrical fire resulting in serious injury or death. Only use in accordance with Table 1 and local electrical wiring code.

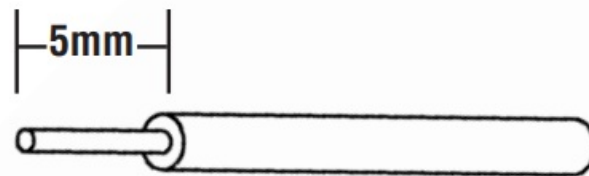
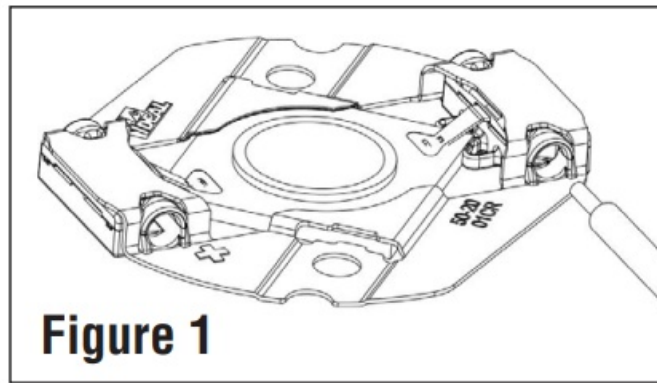
For factory assembly into portable lamps and luminaires.

TABLE 1: Rated Wire (Use copper conductors only)

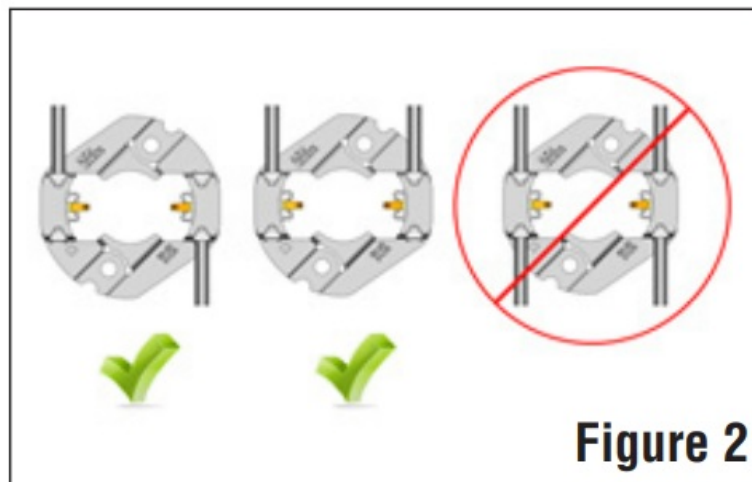
WIRE TYPE		
Solid	18-24 AWG	0,25 – 1,0mm ²
Tin Bonded	20-24 AWG	0,25 – 0,5mm ²
Stranded	20-22 AWG	0,3 – 0,5mm ²
Voltage (except as noted below)*	Class 2	SELV
Current (except as noted below)*	3A Max.	2A
Temperature	110°C	T-110

Wire Insertion Instructions

1. Strip wires to 5 mm (3/16"-7/32").
2. Grip wire firmly and push conductor into wire port (Figure 1). Do not pre-twist stranded wire. Gently pull conductor to ensure proper insertion. Repeat with other wire.

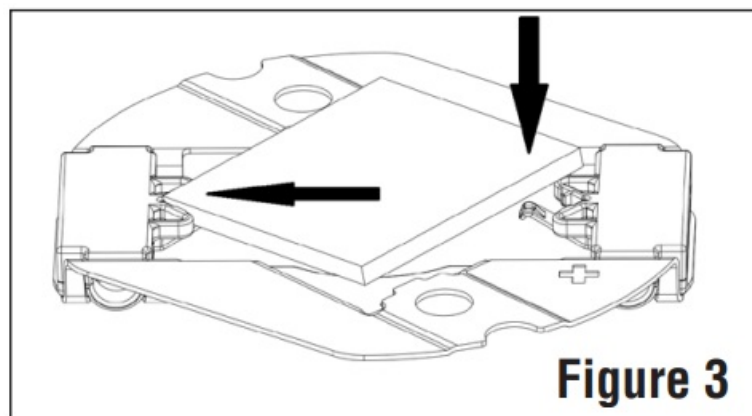


3. Use only one conductor per port and assure that no copper is exposed on any of the wires inserted.
4. Use only one wire per electrical cartridge. (Figure 2)



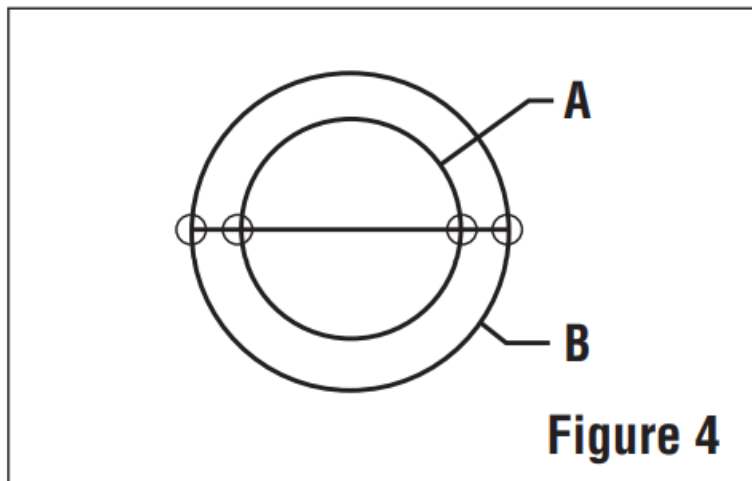
Installation Instructions

1. Hold CHIP-LOK® holder in one hand; LED array in other hand.
2. Locate and align the “+” marking on both products.
3. Set LED array so that the corner of array fits into one set of retention legs.
4. Push the array toward retention legs and down to seat into other set of retention legs. (Figure 3)



5. Apply thermal paste/pad to array or heatsink (Max. pad thickness of 0,5mm)
6. Align Holder/Array assembly over screw holes in heat sink. See table for screw diameters. (Figure 4) Install M3

#4 or #5 pan head screws into luminaire.



7. Torque screws to 0.3 – 0.5 N-m (2.5 – 4.5 in-lb). Contact IDEAL for a proper torque if using thread-forming screws.

Never install holder without COB array. Energizing luminaire without COB array installed could cause electrical shorting to heatsink.

Holder	A in. (mm)	B in. (mm)
50-2002CT	0.984 (25)	Only use 0.984 (25) holes for assembly
50-2000CR	0.984 (25)	
50-2001CR	0.984 (25)	
50-2000P	0.984 (25)	
50-3001CR	1.236 (31.4)	1.378 (35)
50-3002CR	—	1.378 (35)

IDEAL INDUSTRIES GmbH

Gutenbergstrasse 10
D – 85737 Ismaning, Germany
+49-89-99686-0
germanysales@idealnwd.com

IDEAL INDUSTRIES LIMITED

Unit 3, Europa Court, Europa Boulevard
Westbrook, Warrington, WA5 7TN
United Kingdom
+44 (0) 1925 444446
electrical.enquiries@idealnwd.com

IDEAL INDUSTRIES, INC.

Becker Place • Sycamore, IL 60178, U.S.A.
+1-800-324-9571 Customer Assistance
oem@idealindustries.com
www.idealind.com

Documents / Resources



[IDEAL IDEAL 50-2000CR LED Cob Array Holders](#) [pdf] Installation Guide
50-2000CR, 50-2001CR, 50-3001CR, 50-3002CR, 50-2002CT, 50-2000P, IDEAL 50-2000CR L
ED Cob Array Holders, IDEAL 50-2000CR, LED Cob Array Holders, Cob Array Holders, Array
Holders, Holders

References

- [User Manual](#)

[Manuals+.](#) [Privacy Policy](#)

This website is an independent publication and is neither affiliated with nor endorsed by any of the trademark owners. The "Bluetooth®" word mark and logos are registered trademarks owned by Bluetooth SIG, Inc. The "Wi-Fi®" word mark and logos are registered trademarks owned by the Wi-Fi Alliance. Any use of these marks on this website does not imply any affiliation with or endorsement.