



# iDEAL 42 SpliceLine In-Line Wire Connector Starter Kit Installation Guide

[Home](#) » [iDEAL](#) » iDEAL 42 SpliceLine In-Line Wire Connector Starter Kit Installation Guide 

## Contents

- [1 iDEAL 42 SpliceLine In-Line Wire Connector Starter Kit](#)
- [2 Product Information](#)
- [3 Product Usage Instructions](#)
  - [3.1 Installation Instructions](#)
- [4 Documents / Resources](#)
  - [4.1 References](#)
- [5 Related Posts](#)



**iDEAL 42 SpliceLine In-Line Wire Connector Starter Kit**



## Product Information

- **Product Name:** SpliceLine Wire Connectors
- **Model:** 42
- **Color:** Orange
- **Wire Range:** Solid: 0.5mm<sup>2</sup> – 4.0mm<sup>2</sup>, Stranded\*: 1.0mm<sup>2</sup> – 2.5mm<sup>2</sup> (\*Stranded wire is limited to 7 strands)
- **Manufacturer Website:** [www.idealind.com](http://www.idealind.com)

## Product Usage Instructions

### To install the SpliceLine Wire Connector:

1. Strip the wire insulation to a length of 13mm.
2. Insert the stripped end of the wire into the connector.
3. Ensure that the wire is fully inserted and secure.

### To remove the SpliceLine Wire Connector:

Gently pull the wire from the connector.

### To test the connection:

Perform necessary testing procedures to ensure a secure and reliable connection.

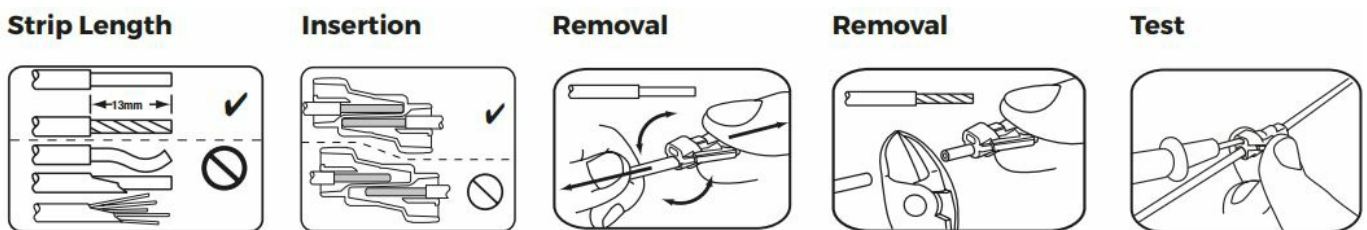
Note: The SpliceLine Wire Connector Model 42 is suitable for use with solid wires ranging from 0.5mm<sup>2</sup> to 4.0mm<sup>2</sup> and stranded wires ranging from 1.0mm<sup>2</sup> to 2.5mm<sup>2</sup> (limited to 7 strands).

## Installation Instructions

SpliceLine Wire Connectors

### Model 42

- Do not exceed the rating of these connectors.
- Turn OFF power before removing or installing connectors.
- Wiring must comply with all applicable electrical regulations.
- COPPER TO COPPER ONLY. Do not use on aluminium wire.
- Incorrect use of these connectors can cause electrical fires, personal injury or death.
- These connectors are suitable for solid and semi-rigid (<7 strands) conductors. They are not suitable or rated for use with flexible cable with >7 strands.
- Strip wires back 13mm.
- Grip wire firmly and push conductor into open port.
- Use only one conductor per port.
- Connectors are reusable on solid wires of the same wire gauge or larger. If reusing connectors, cut and re-strip conductors
- In order to remove a wire, pull and twist the wire back and forth.
- DO NOT RE-USE connector on stranded wire.



Model	Colour	Rating	Wire Range
42	Orange	32A / 450V /105°C	Solid: 0.5mm <sup>2</sup> – 4.0mm <sup>2</sup> Stranded*: 1.0mm <sup>2</sup> – 2.5mm <sup>2</sup>

\* Stranded wire is limited to ≤ 7 strands

<http://www.idealind.com>

## Documents / Resources

	<p><b><a href="#">iDEAL 42 SpliceLine In-Line Wire Connector Starter Kit</a></b> [pdf] Installation Guide</p> <p>42, 42 SpliceLine In-Line Wire Connector Starter Kit, SpliceLine In-Line Wire Connector Starter Kit, In-Line Wire Connector Starter Kit, Wire Connector Starter Kit, Connector Starter Kit, Starter Kit, Kit</p>
--	---

## References

- [IDEAL Electrical](#) | [Home](#) | [Wire Connectors](#) | [Hand Tools](#)