

# Ideal Standard T4307PA Tall Column Unit Open Instruction Manual

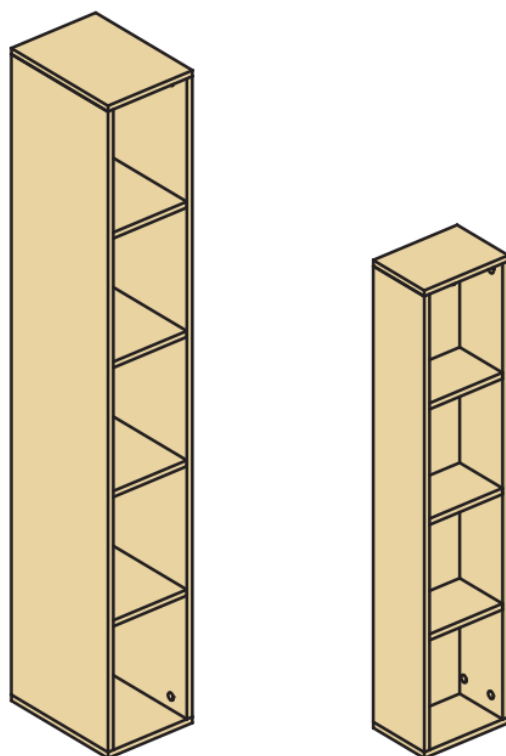
[Home](#) » [Ideal Standard](#) » Ideal Standard T4307PA Tall Column Unit Open Instruction Manual 

## Contents

- [1 Ideal Standard T4307PA Tall Column Unit Open](#)
- [2 Assembly instructions](#)
- [3 TOOLS REQUIRED](#)
- [4 HARDWARE LIST](#)
- [5 DIMENSION](#)
- [6 INSTALLATION INSTRUCTION](#)
- [7 TYPE OF MATERIALS](#)
- [8 SAFETY](#)
- [9 MAINTENANCE AND CLEANING](#)
- [10 PRODUCT LIFE-CYCLE](#)
- [11 CONTACT](#)
- [12 Documents / Resources](#)
- [13 Related Posts](#)



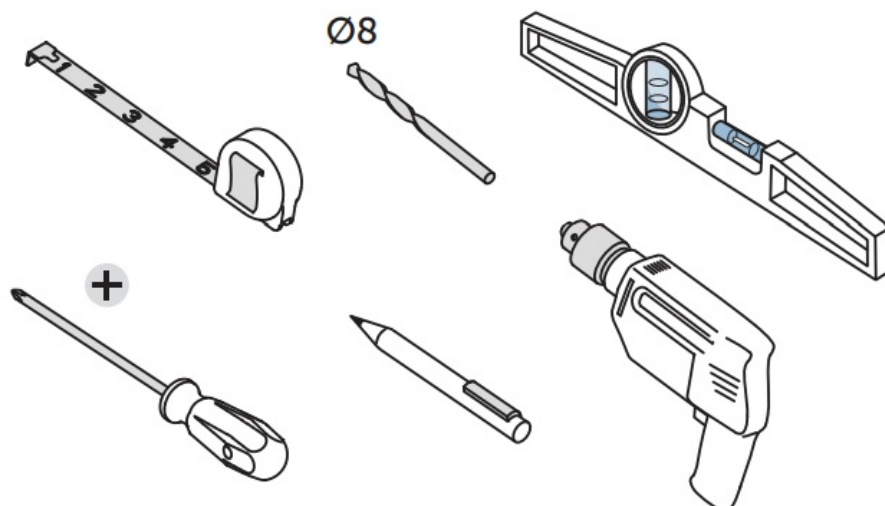
**Ideal Standard T4307PA Tall Column Unit Open**



## Assembly instructions

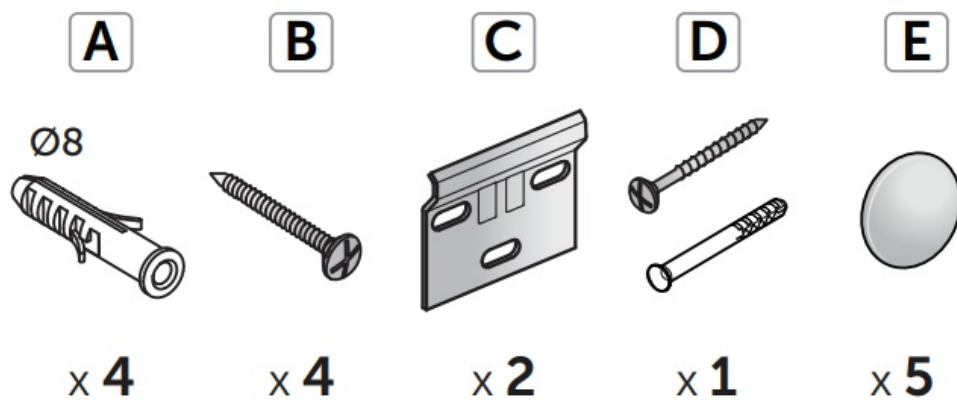
Please read the instructions first. We reserve the right to change product specifications due to possible technical improvements. The manual is supplied with the product; It must be kept for future reference and for the entire life cycle of the product and given to each subsequent owner.

## TOOLS REQUIRED

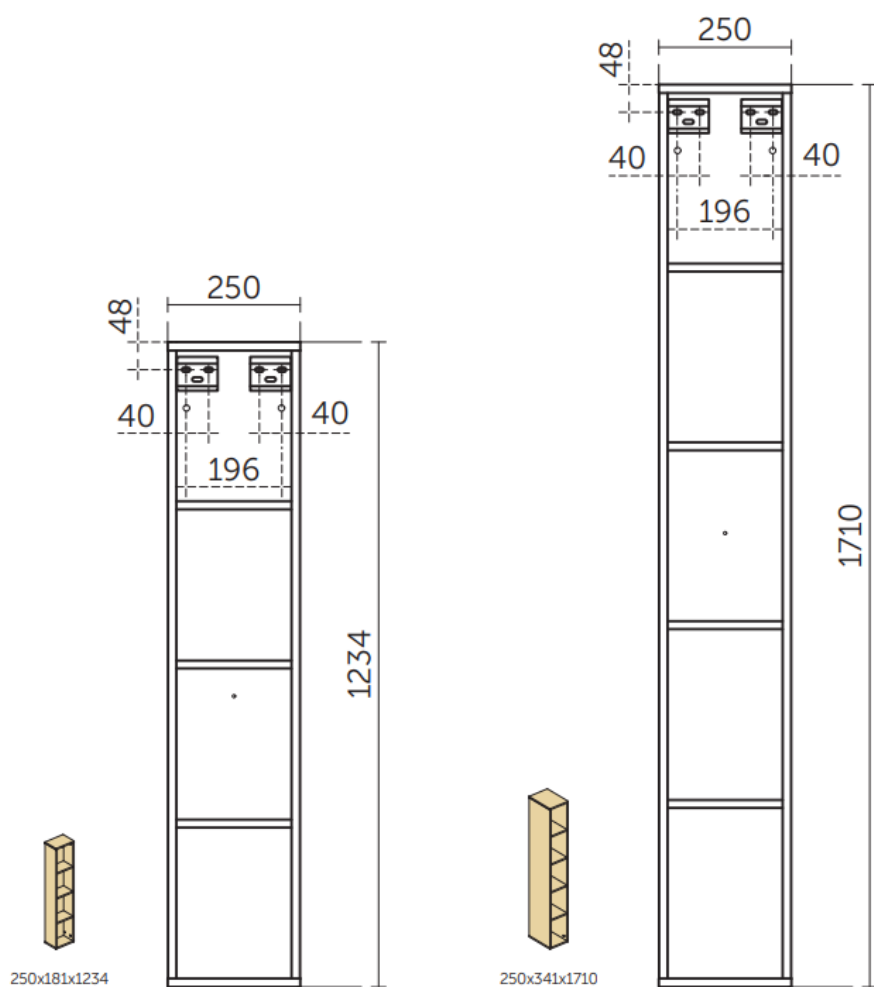


**Caution:** Always use appropriate fixings to suit your type of wall

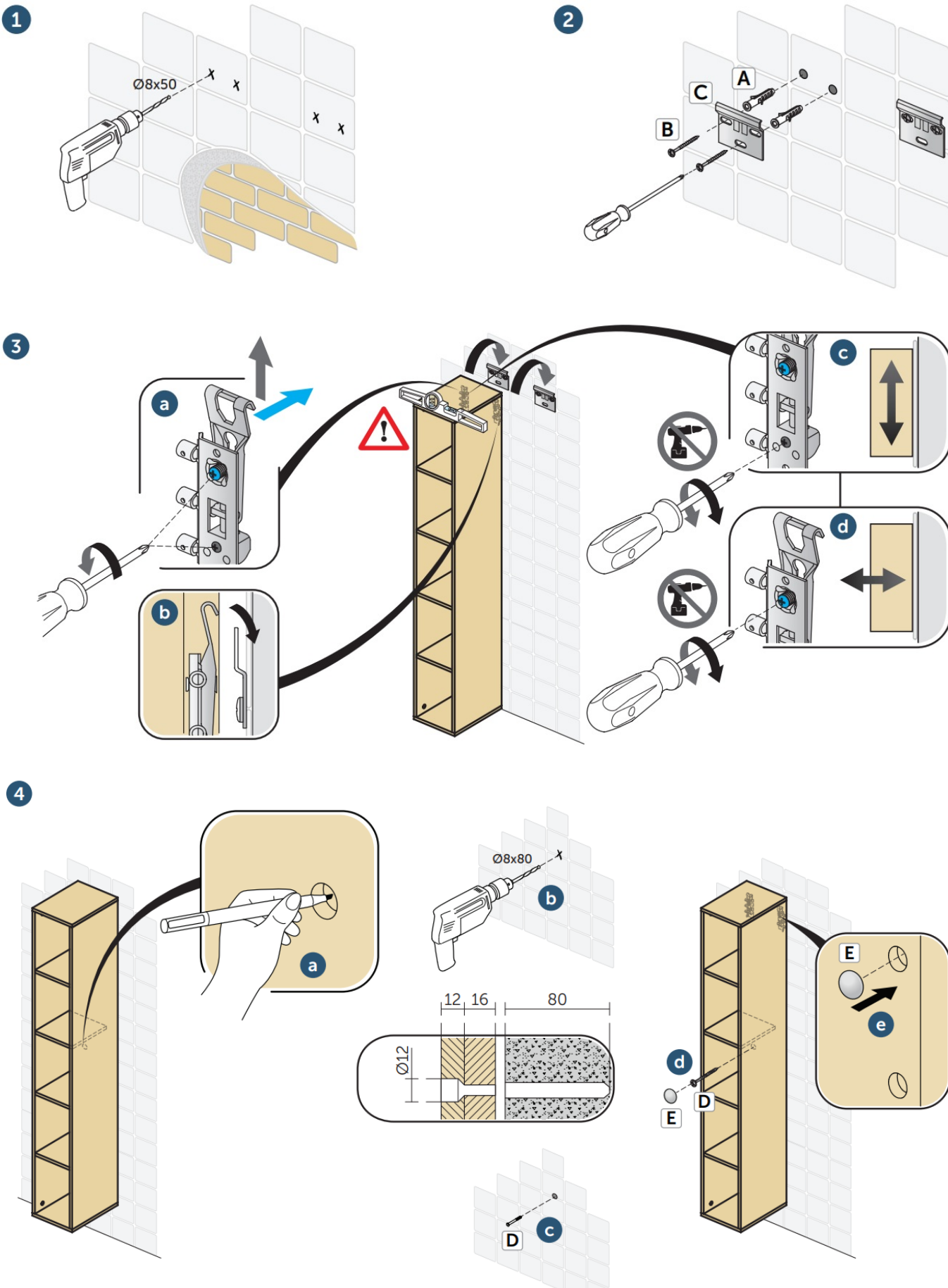
## HARDWARE LIST



## DIMENSION



## INSTALLATION INSTRUCTION



## TYPE OF MATERIALS

Basin unit, column, drawer panel, shelf: MDF/MFC Class E1; Drawer: Push to open with soft close; Door: Push to open; Drawer sides, runners, hinges, wall hanging brackets, fixing plates: Steel; Handle profile: Chrome plated; Finishes: Gloss and Matt lacquered / Melamine.

## **SAFETY**

Maximum Shelf Loading: 2 Kg evenly distributed. Do not apply pressure of more than 15 Kg on open drawers. Incorrect installation and/or use of the item for any purpose other than that for which it was intended can be dangerous or cause possible injury to users. When cleaning or using the bathroom, please take care for all furniture having integrated lights or other electric parts, to avoid direct contact with water or moisture. The products should be installed in a bathroom with adequate ventilation.

## **MAINTENANCE AND CLEANING**

Wipe down with a damp cloth and dry carefully. Do not use any solvents or abrasive substances for cleaning. Spilt liquids must be wiped up immediately using a cloth; thereafter, dry the surface with a clean dry cloth.

## **PRODUCT LIFE-CYCLE**

At the end of its useful life, entrust the unit to the local waste disposal company

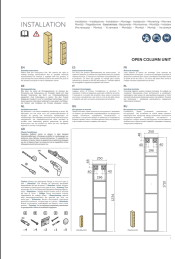
## **CONTACT**

- GB 01482 496 318
- ES +34 95 561 80 00
- IT 800 – 652290
- DK +45 75 84 10 10
- BG +359 675 30801
- FR +33 (0)1 49 38 28 00
- DE +49 (0)228 521 580
- BE +32 (02) 325 66 33
- CZ +420 417 592 179
- LT +371 673 57 792
- EE +371 673 57 792
- LV +371 673 57 792
- GR +30 210 67 90 810
- HU +36 30 6991 594
- MD +7495 669 23 11
- MK +381 11 713 80 58
- PL +48 71 7868 301/302
- SK +420 417 592 179
- RO +40 21 3223 201/202
- TR +90 216 314 87 87
- RU +7 495 669 23 11
- UA +359 675 30468
- RS +381 11 713 80 58
- NL +31 (077) 355 08 08

## **FOR MORE INFO**



## Documents / Resources

	<p><a href="#">Ideal Standard T4307PA Tall Column Unit Open</a> [pdf] Instruction Manual T4307PA, Tall Column Unit Open, Column Unit Open, Unit Open, T4307PA</p>
-----------------------------------------------------------------------------------	-----------------------------------------------------------------------------------------------------------------------------------------------------------------------