




Ideal Standard T4306WG Column Unit Instruction Manual

[Home](#) » [Ideal Standard](#) » Ideal Standard T4306WG Column Unit Instruction Manual 

Contents

- [1 Ideal Standard T4306WG Column Unit](#)
- [1.1 Tools](#)
- [2 Dimension](#)
- [3 Assembly instructions](#)
- [4 TYPE OF MATERIALS](#)
- [5 SAFETY](#)
- [6 MAINTENANCE AND CLEANING](#)
- [7 Documents / Resources](#)
- [8 Related Posts](#)



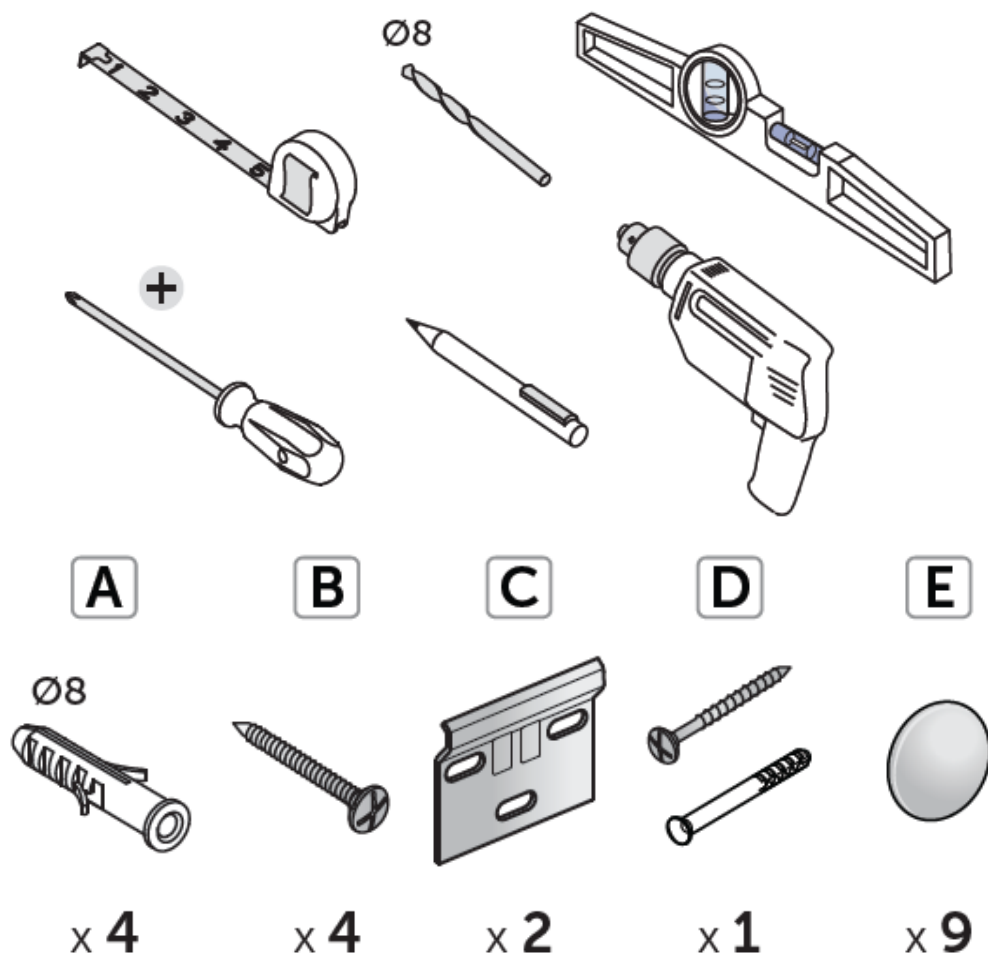
Ideal Standard

Ideal Standard T4306WG Column Unit

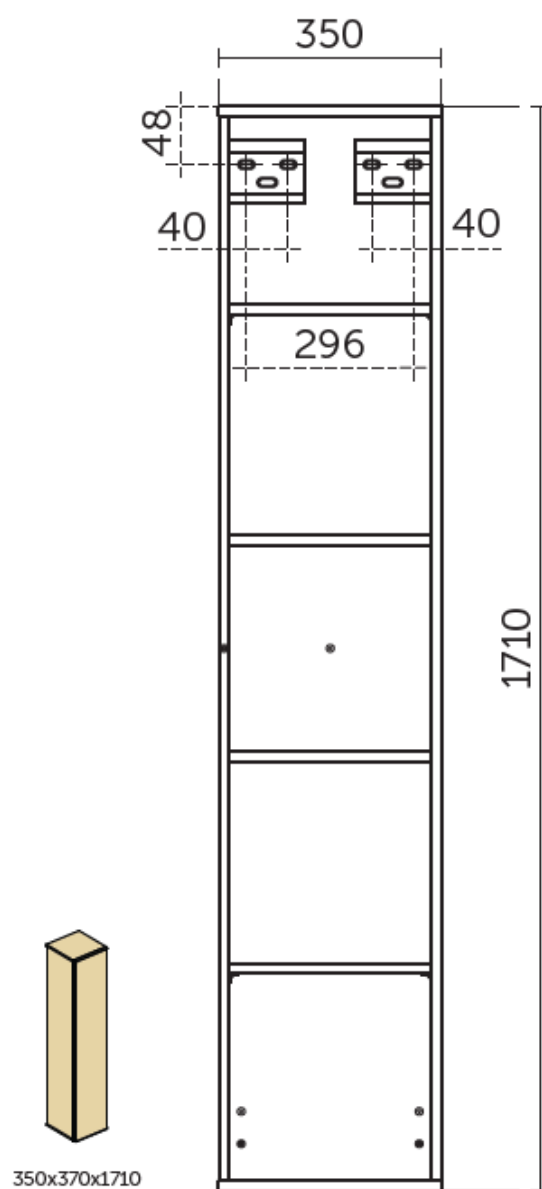
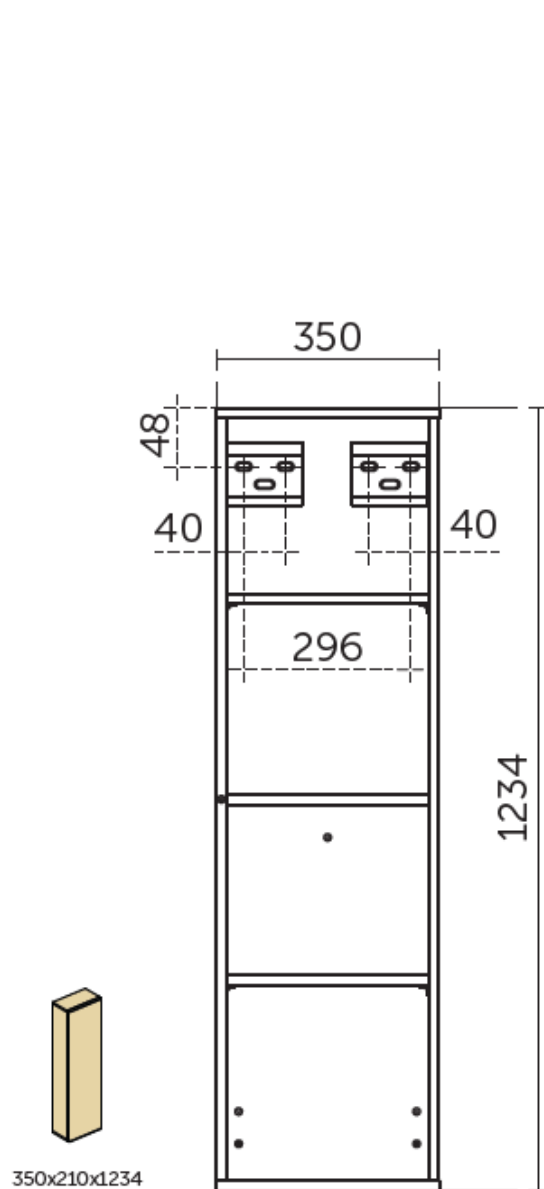


Please read the instructions first. We reserve the right to change product specifications due to possible technical improvements. The manual is supplied with the product; It must be kept for future reference and for the entire life cycle of the product and given to each subsequent owner.

Tools

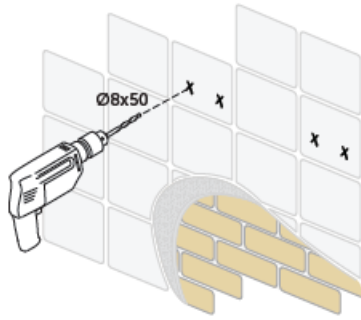


Dimension

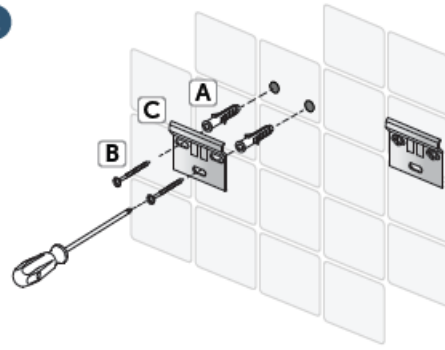


Assembly instructions

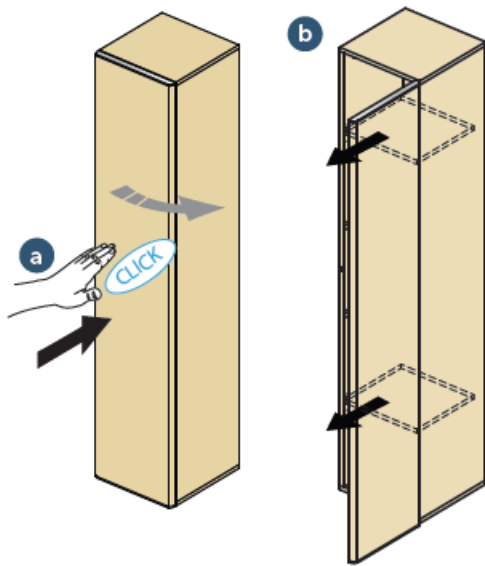
1



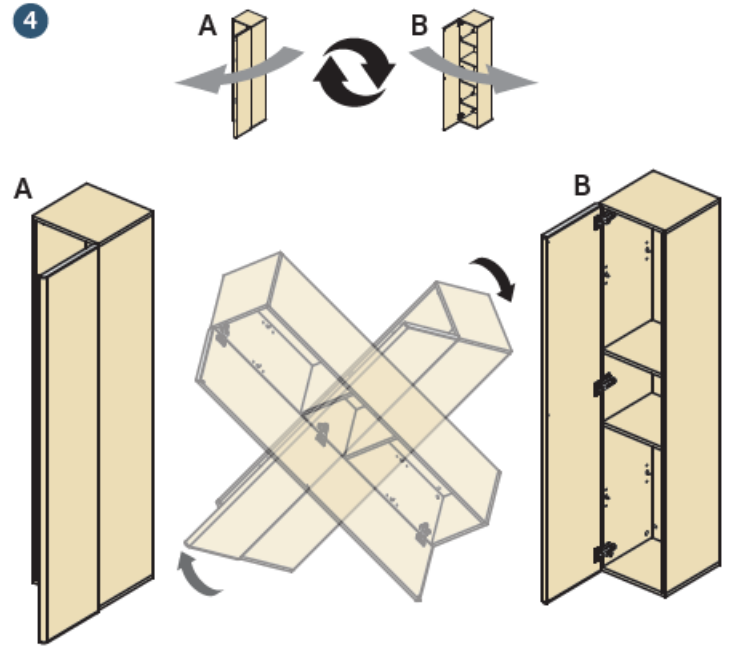
2



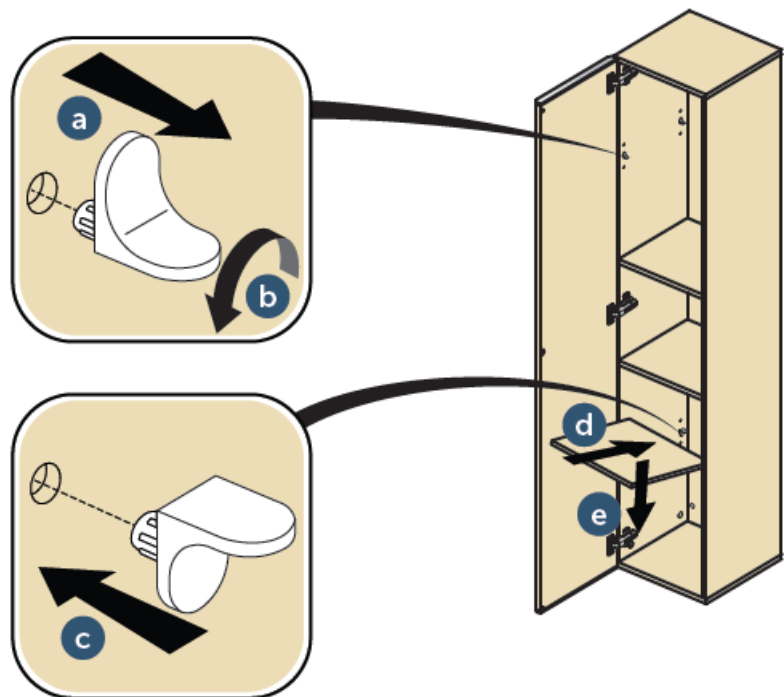
3



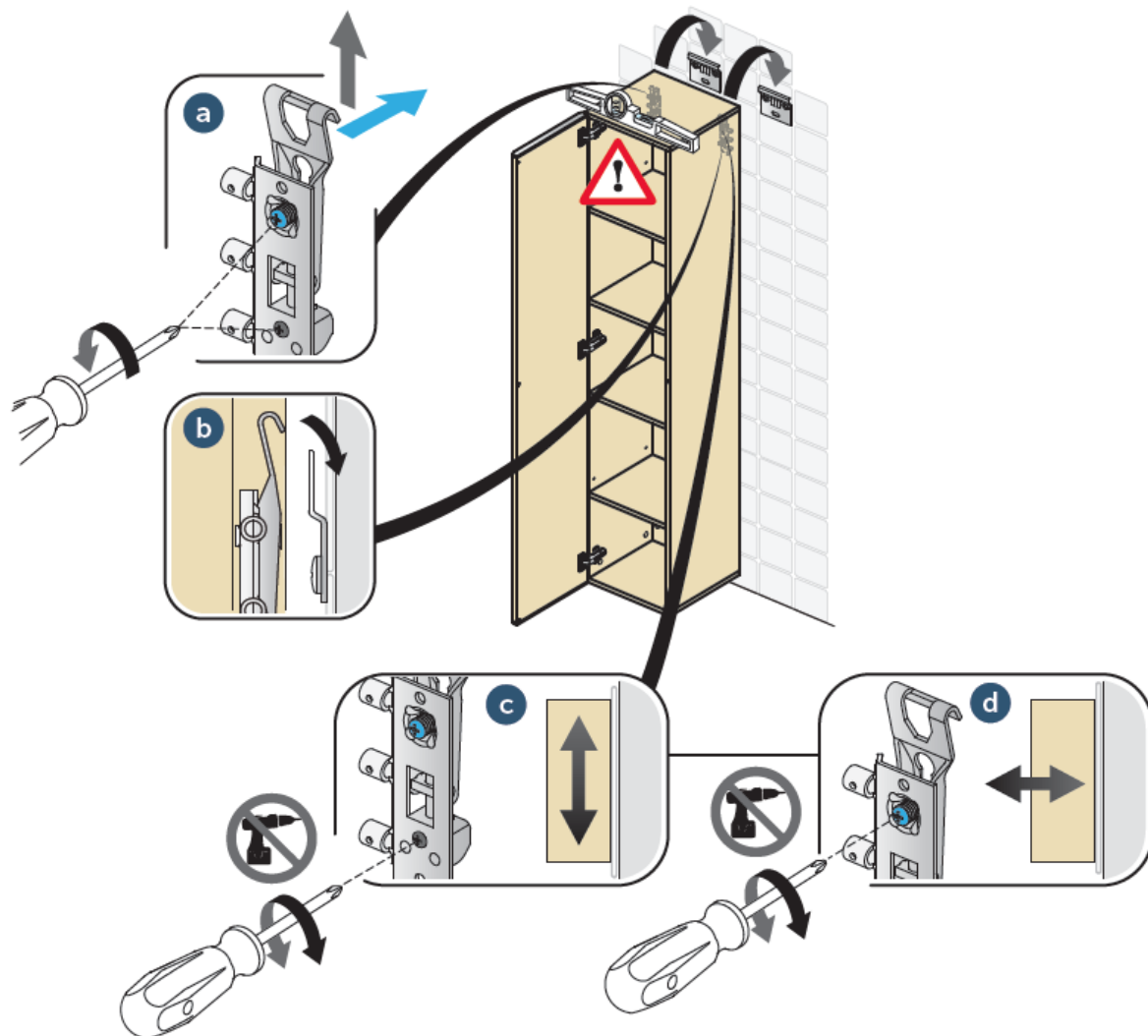
4



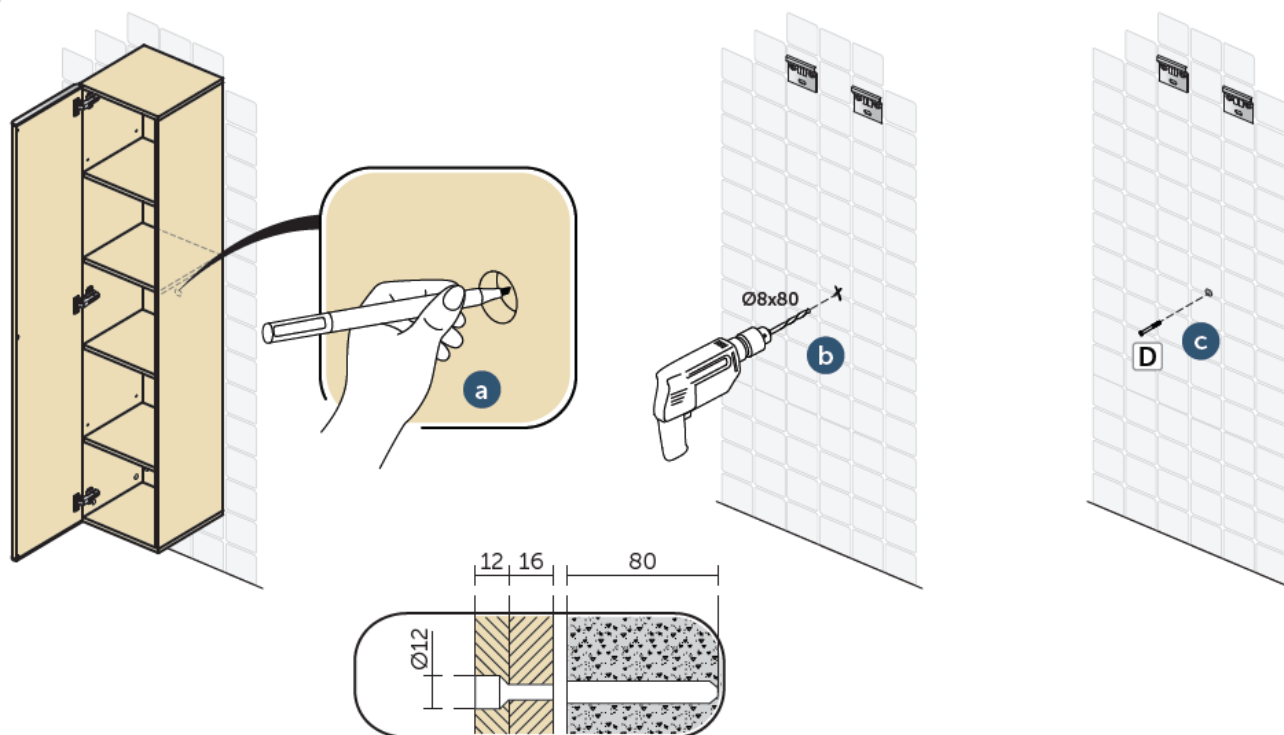
5



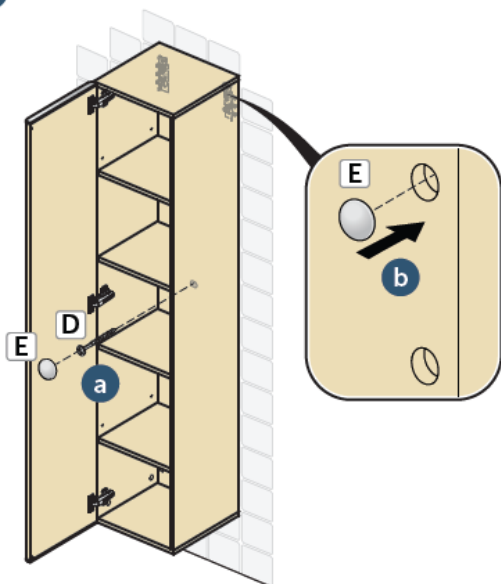
6



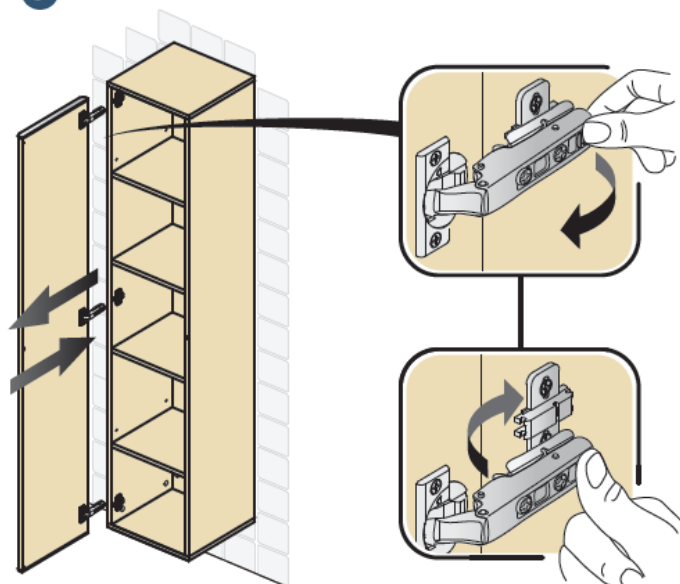
7



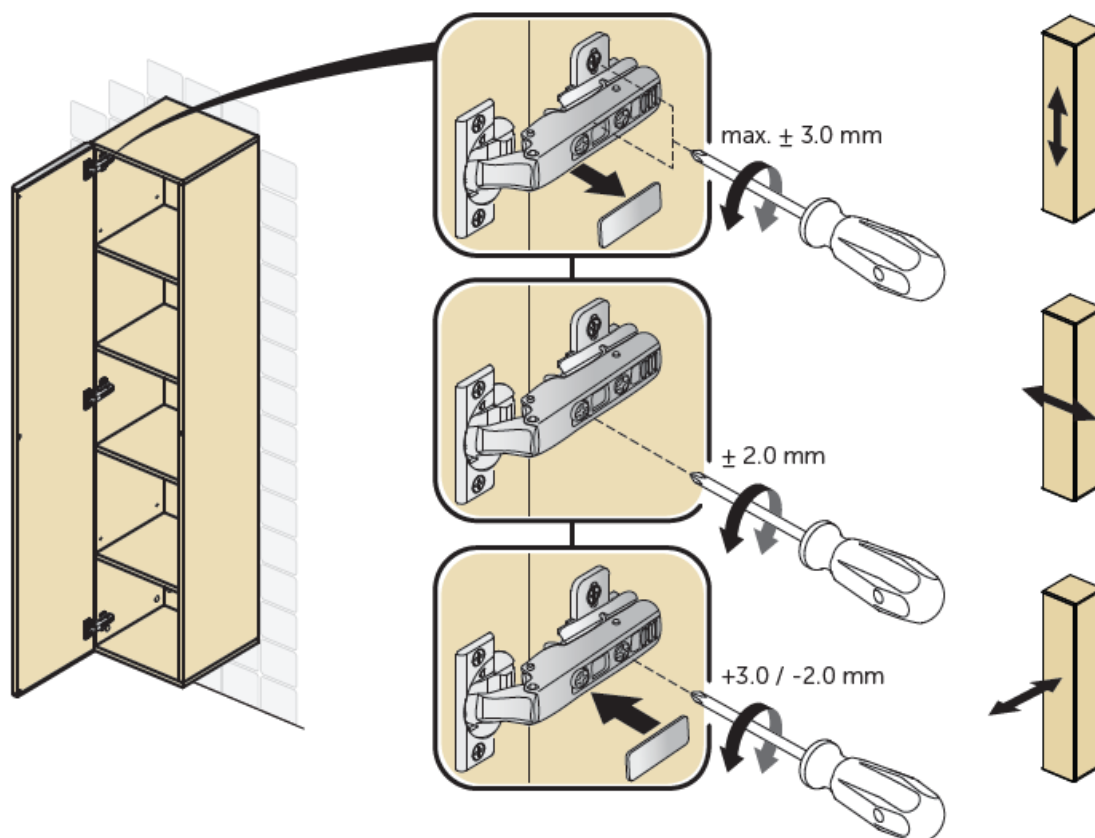
8



9



10



TYPE OF MATERIALS

Basin unit, column, drawer panel, shelf: MDF/MFC Class E1; Drawer: Push to open with soft close; Door: Push to open; Drawer sides, runners, hinges, wall hanging brackets, fixing plates: Steel; Handle profile: Chrome plated; Finishes: Gloss and Matt lacquered / Melamine.

SAFETY

Maximum Shelf Loading: 2 Kg evenly distributed. Do not apply pressure of more than 15 Kg on open drawers. Incorrect installation and/or use of the item for any purpose other than that for which it was intended can be

dangerous or cause possible injury to users. When cleaning or using the bathroom, please take care for all furniture having integrated lights or other electric parts, to avoid direct contact with water or moisture. The products should be installed in a bathroom with adequate ventilation.

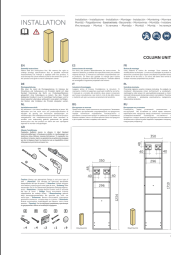
MAINTENANCE AND CLEANING

Wipe down with a damp cloth and dry carefully. Do not use any solvents or abrasive substances for cleaning. Spilt liquids must be wiped up immediately using a cloth; thereafter, dry the surface with a clean dry cloth.

PRODUCT LIFE-CYCLE

At the end of its useful life, entrust the unit to the local waste disposal company. 01482 496 318

Documents / Resources

	<p>Ideal Standard T4306WG Column Unit [pdf] Instruction Manual T4306WG, Column Unit, T4306WG Column Unit</p>
---	--