



Ideal Standard
R031567 ProSys
1150mm
Pneumatic
Adjustable WC
Frame



Ideal Standard R031567 ProSys 1150mm Pneumatic Adjustable WC Frame Installation Guide

[Home](#) » [Ideal Standard](#) » Ideal Standard R031567 ProSys 1150mm Pneumatic Adjustable WC Frame Installation Guide 

Contents

- [1 Ideal Standard R031567 ProSys 1150mm Pneumatic Adjustable WC Frame](#)
- [2 Product Usage Instructions](#)
- [3 Dimension](#)
- [4 Installation](#)
- [5 Documents / Resources](#)
 - [5.1 References](#)
- [6 Related Posts](#)



Ideal Standard R031567 ProSys 1150mm Pneumatic Adjustable WC Frame



Specifications

- Product Name: PROSYS WC Frame 120 3H
- Operation: Pneumatic
- Class: 2
- Weight: 500 grams
- Operating Temperature: 150-210°C
- Operating Pressure: 20-90 bar
- Height: 185 mm
- Width: 120 mm
- Depth: >300 mm
- Dimensions (W x H): 1150 x 1040 mm
- Installation Depth: 320/370/420 mm
- Flush Plate Dimensions (W x H): 230 x 180 mm

Product Usage Instructions

Installation

1. Ensure the installation area meets the specified dimensions.
2. Mount the frame securely to the wall using appropriate fasteners.
3. Connect the pneumatic system according to the provided instructions.

Flush Plate Installation

1. Attach the flush plate to the designated area on the frame.
2. Adjust the flush plate settings as needed for proper operation.

Maintenance

Regularly check for any leaks or malfunctions in the pneumatic system. Clean the frame and flush plate as

necessary to maintain hygiene.

FAQ

- **Q: What is the maximum weight capacity of the PROSYS WC Frame 120 3H?**

A: The frame can support a maximum weight of 1000 kg.

- **Q: How do I adjust the operating pressure of the pneumatic system?**

A: You can adjust the operating pressure within the range of 20-90 bar using the provided adjustment mechanisms.

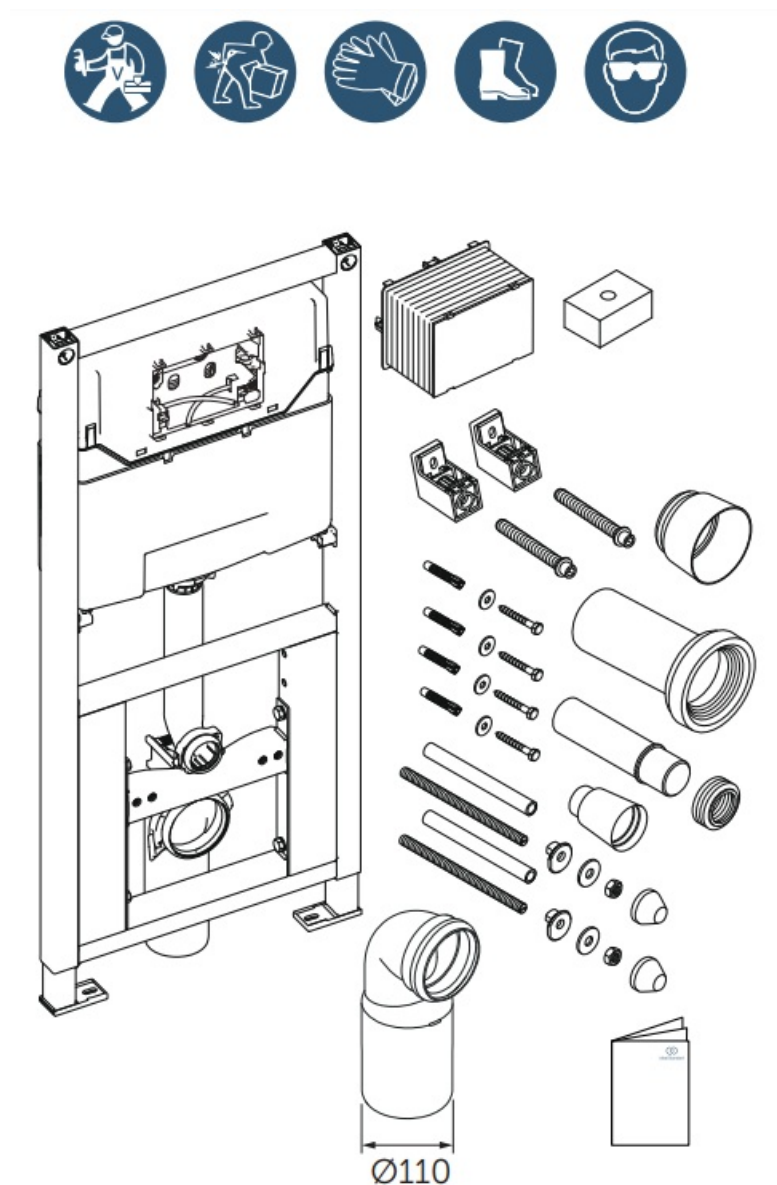
- **Q: Is professional installation required for this product?**

A: It is recommended to have a professional plumber install the PROSYS WC Frame 120 3H to ensure proper functioning and safety.

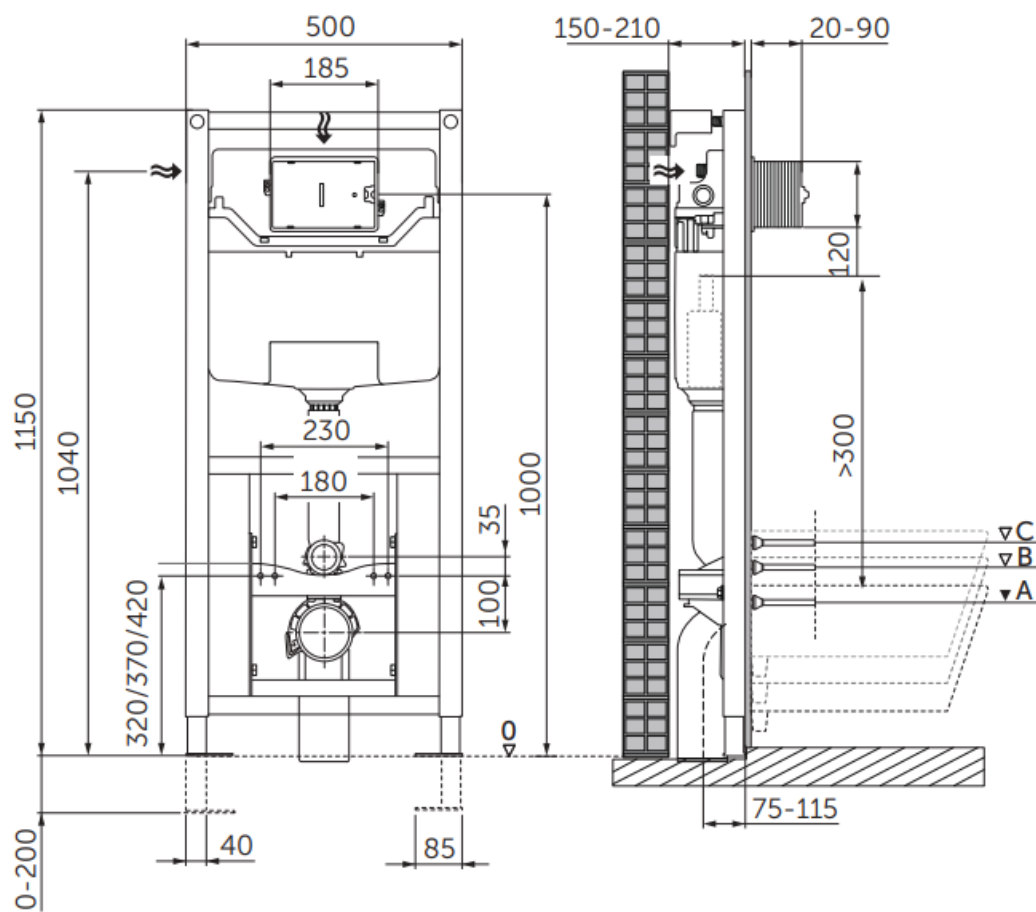
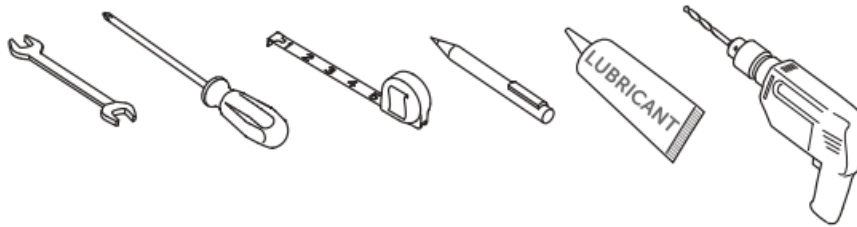
PROSYS

WC Frame 120 3H | Pneumatic | Class 2

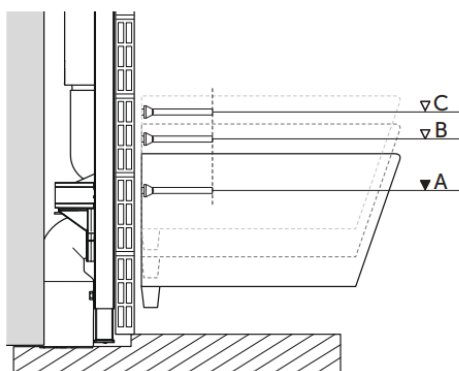
Tools



Dimension



B
C

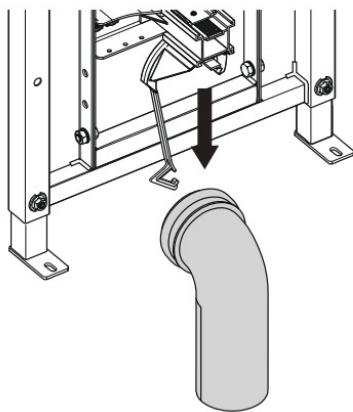


A	B	C
±320 (pre-set)	±370	±420

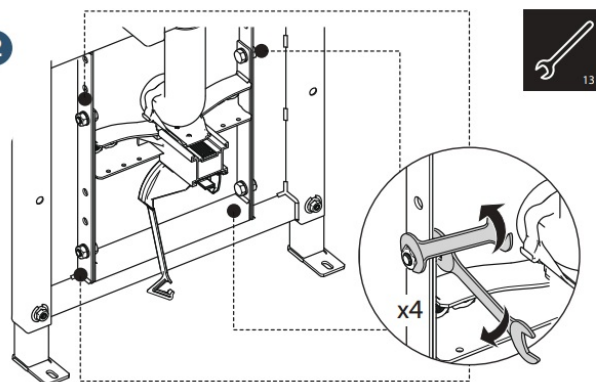
(dimensions in millimeters)

Installation

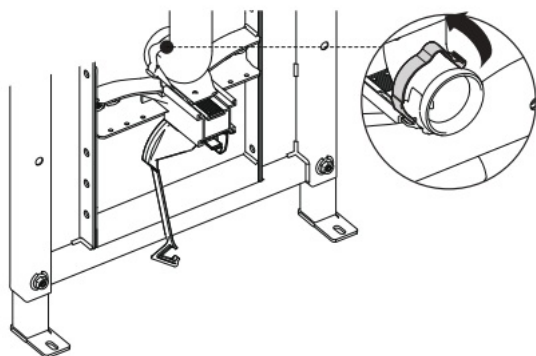
1



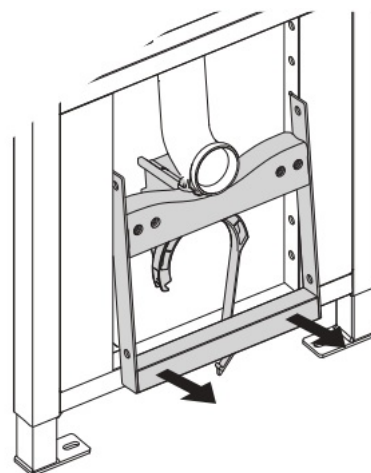
2



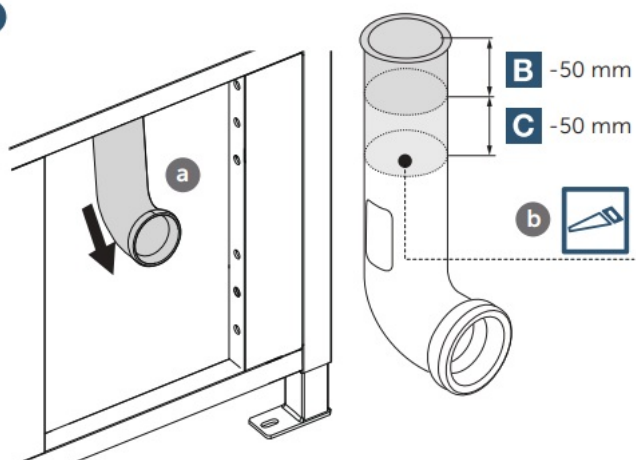
3



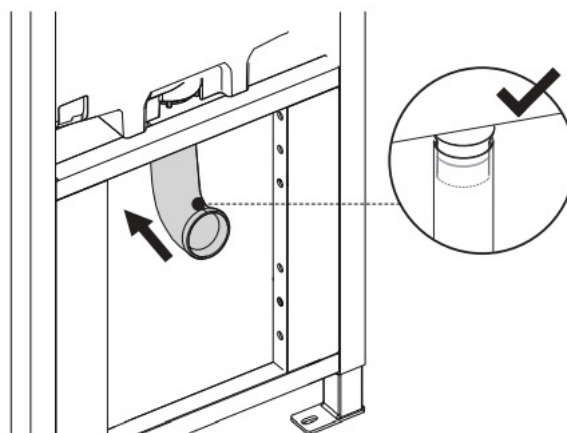
4



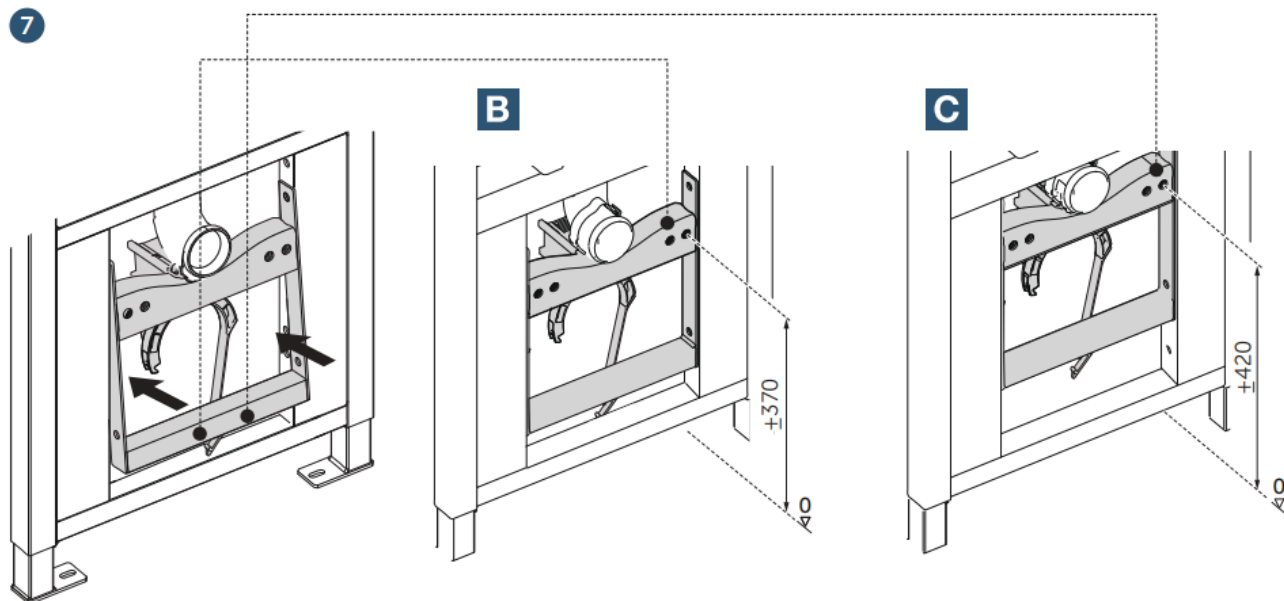
5



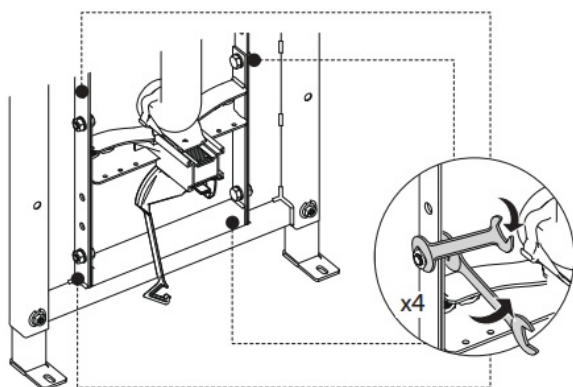
6



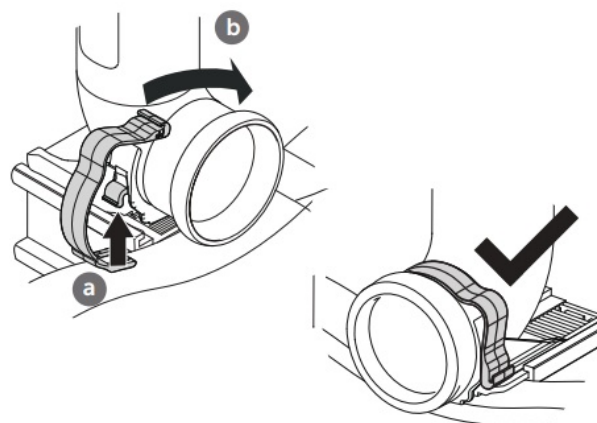
7



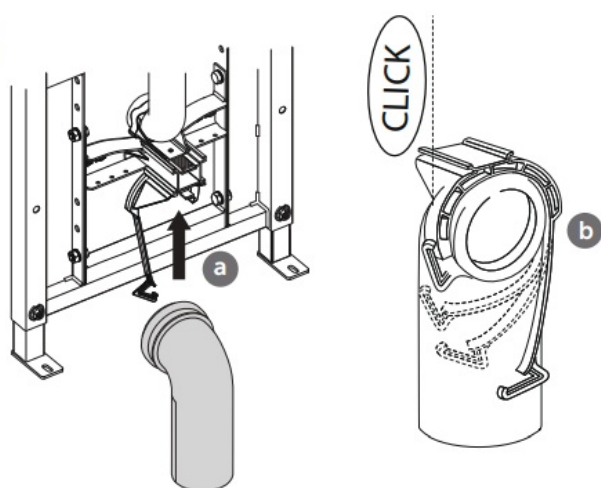
8



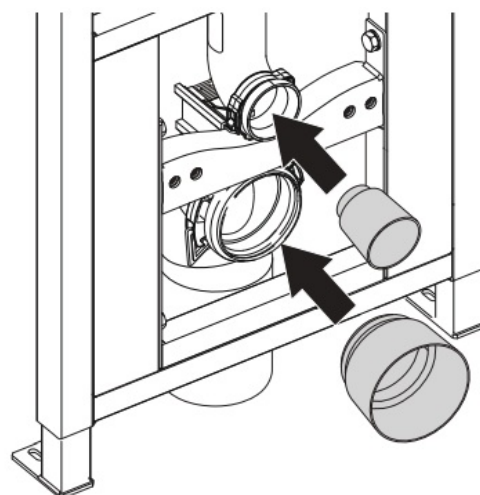
9



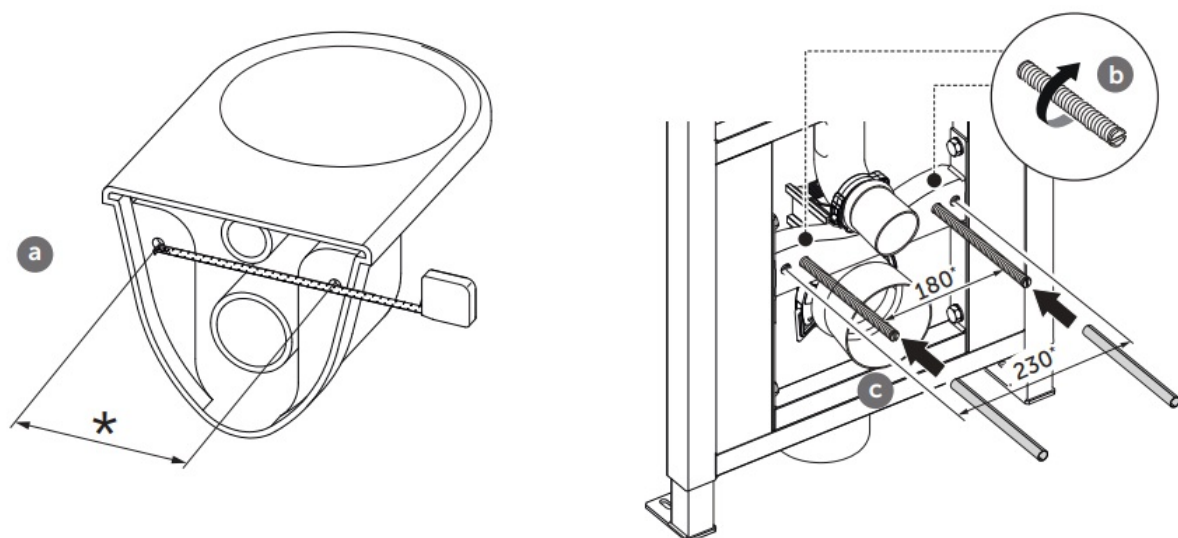
10



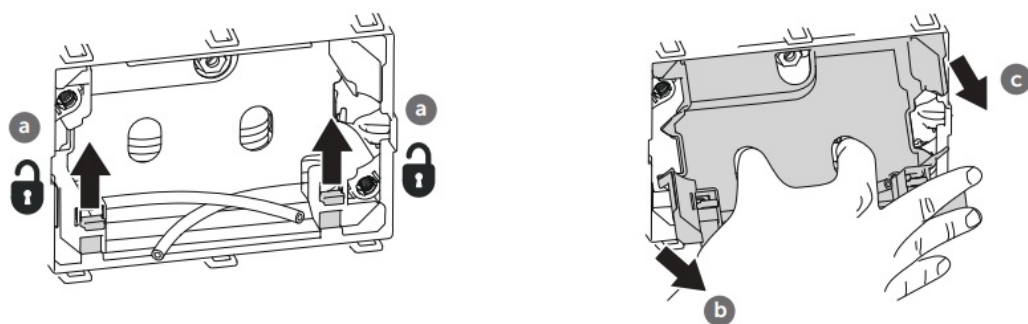
11



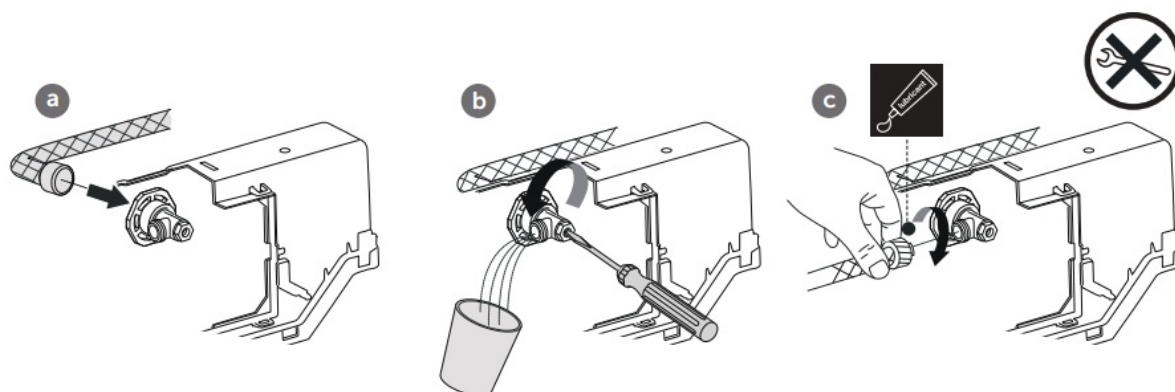
12



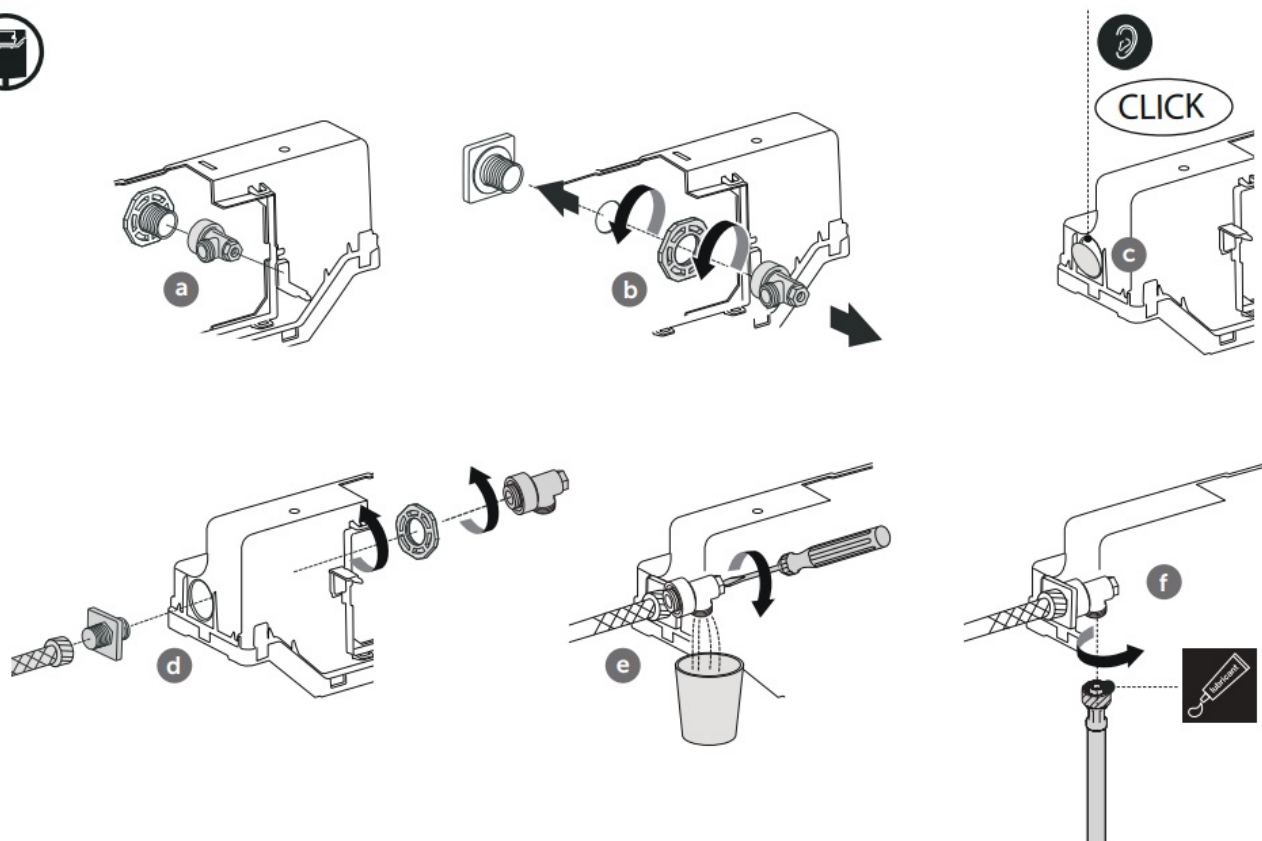
13



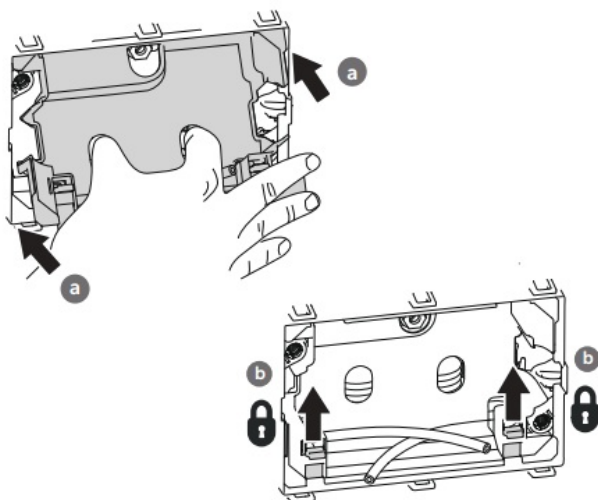
14 A



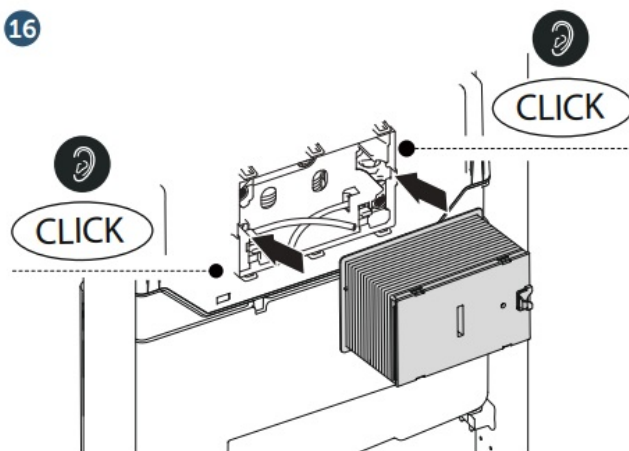
14 B



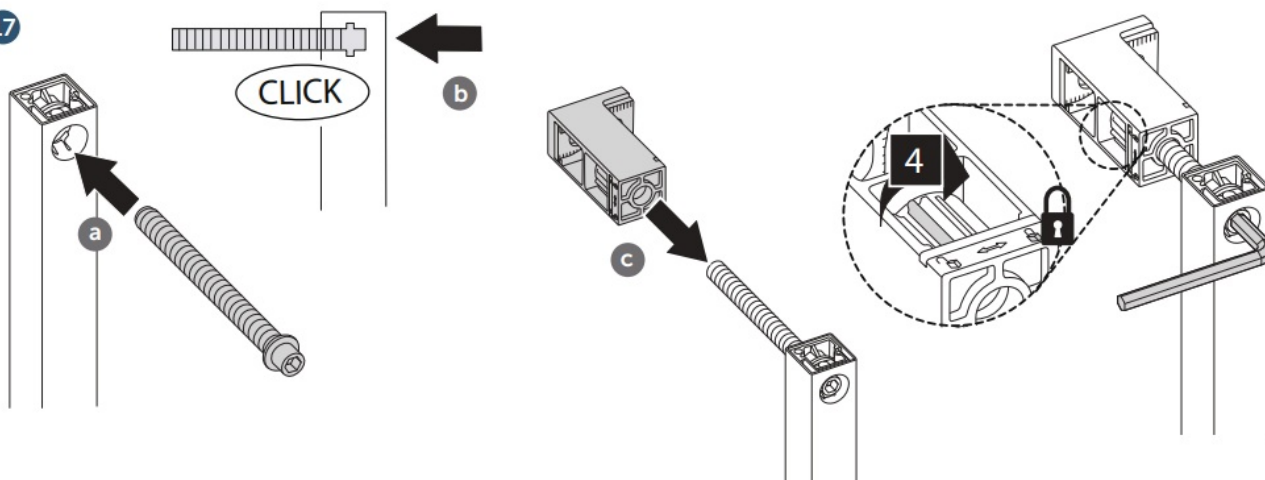
15

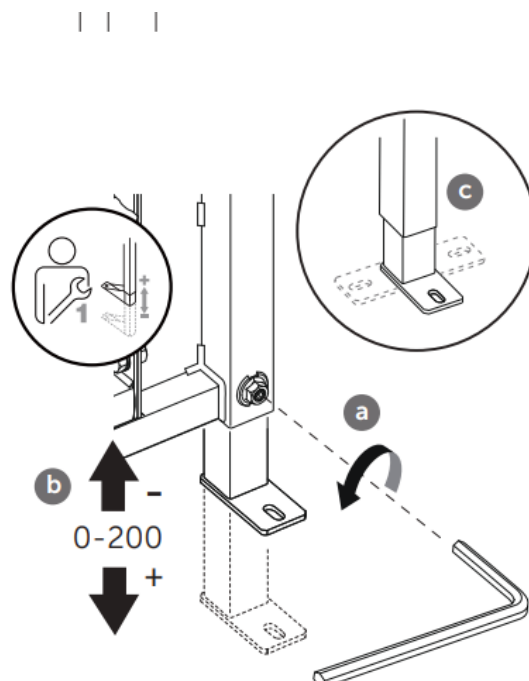
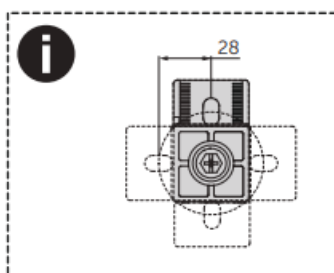
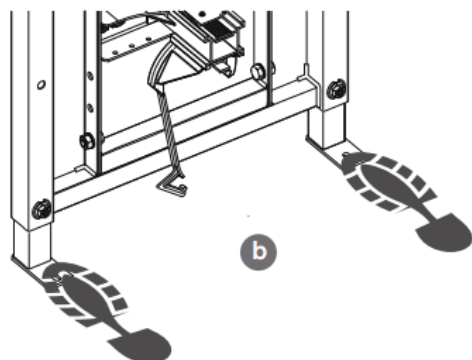
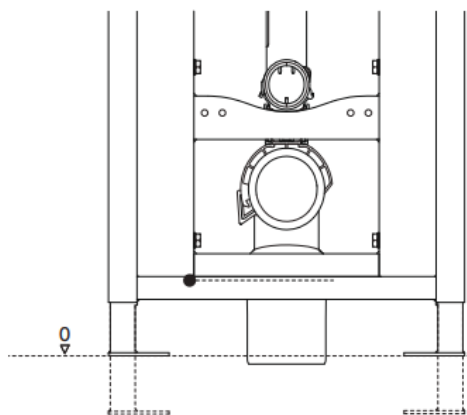


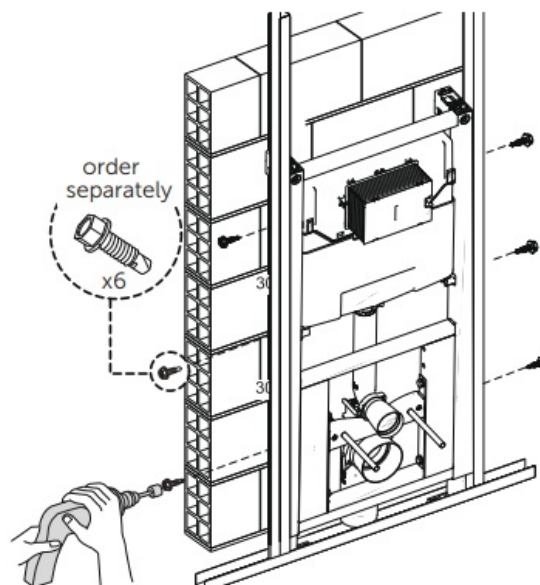
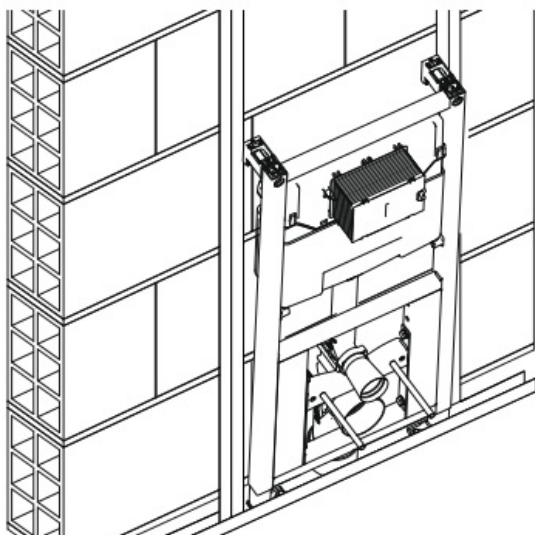
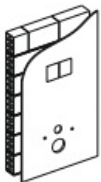
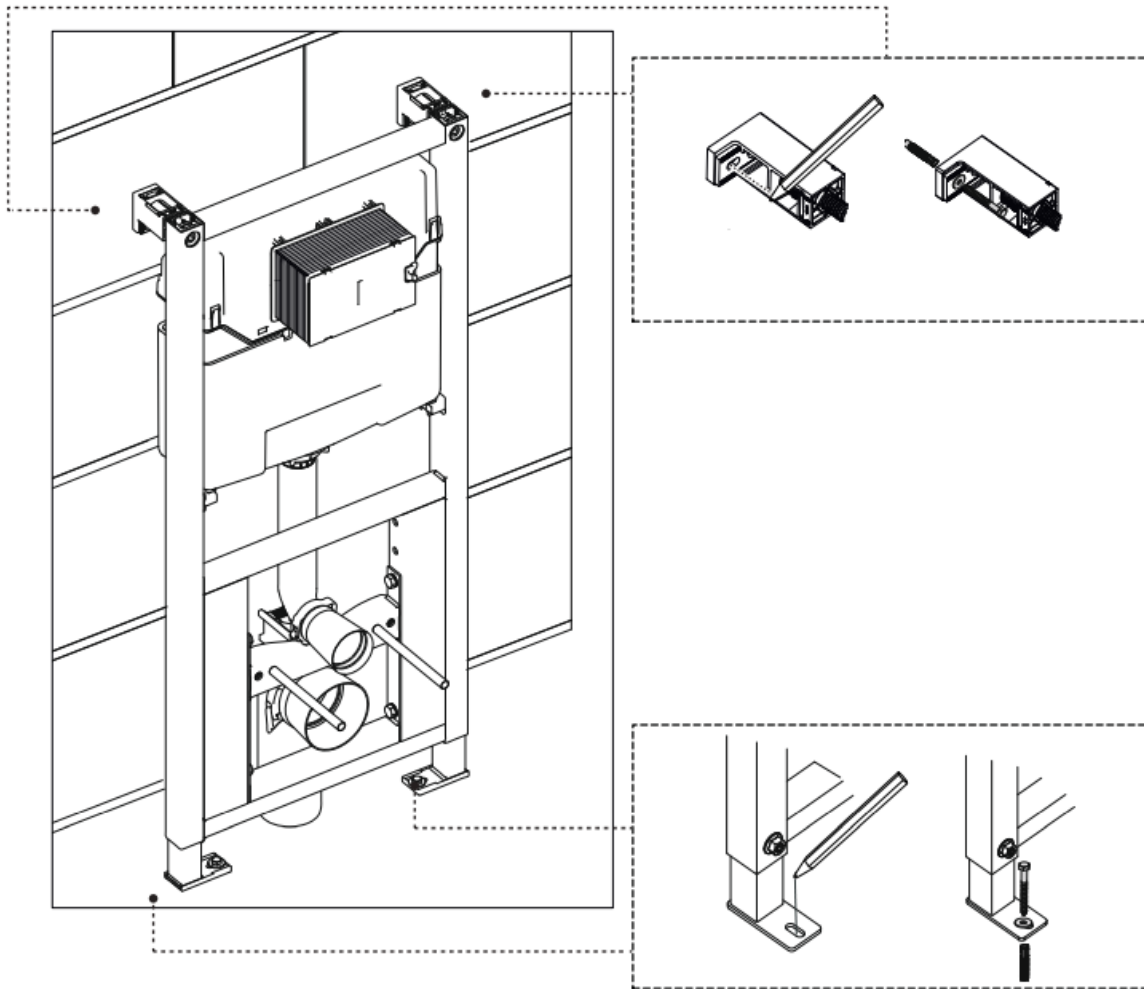
16

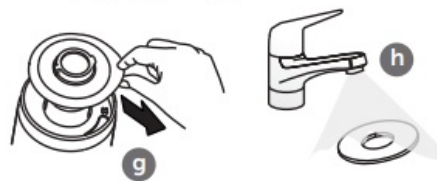
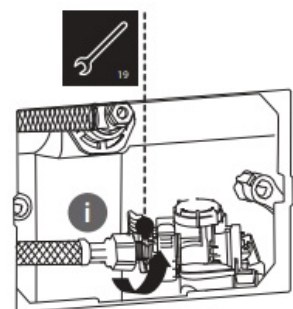
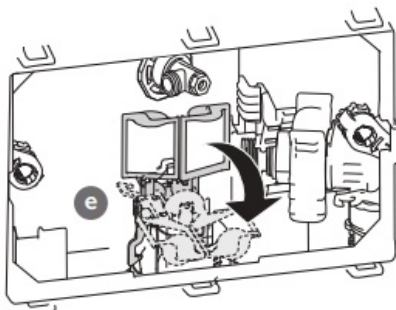
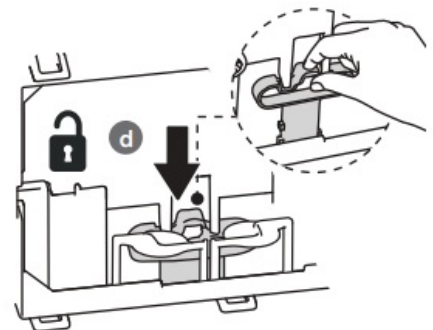
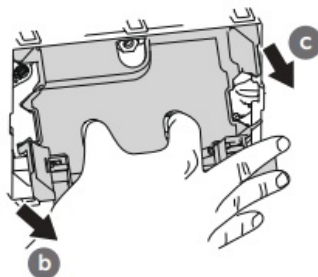
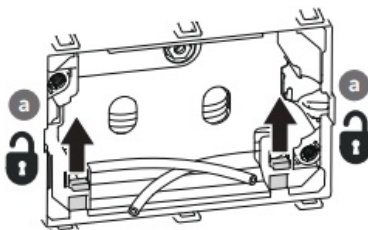
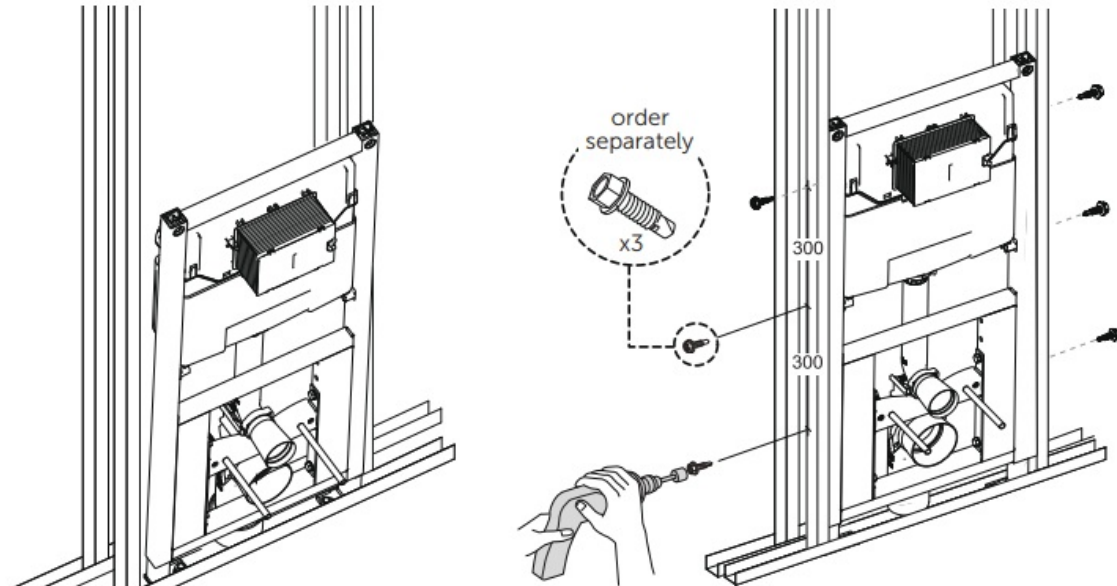


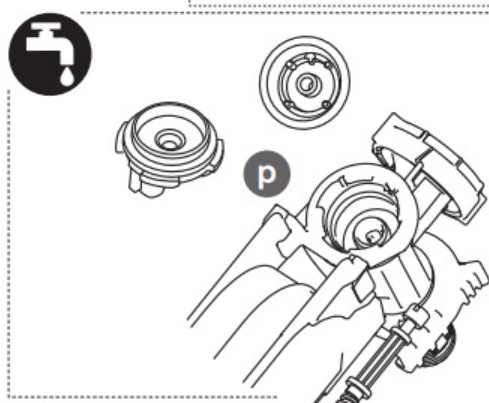
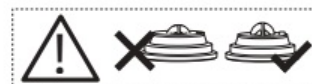
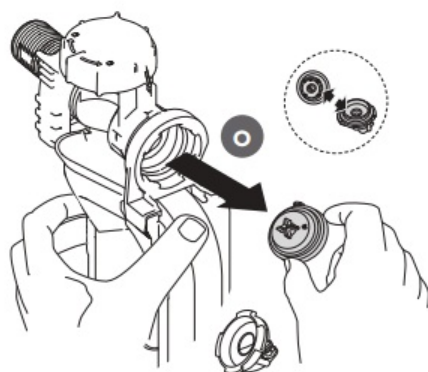
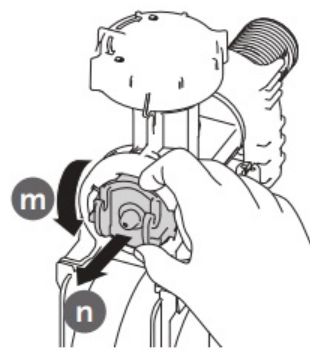
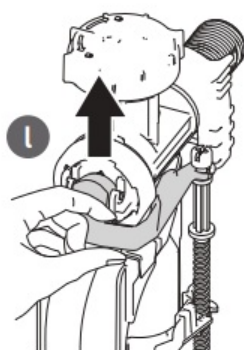
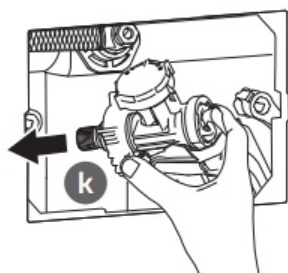
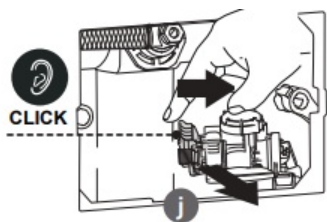
17



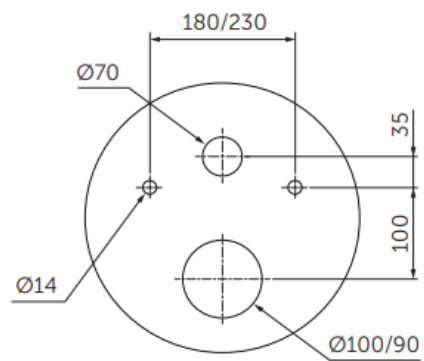
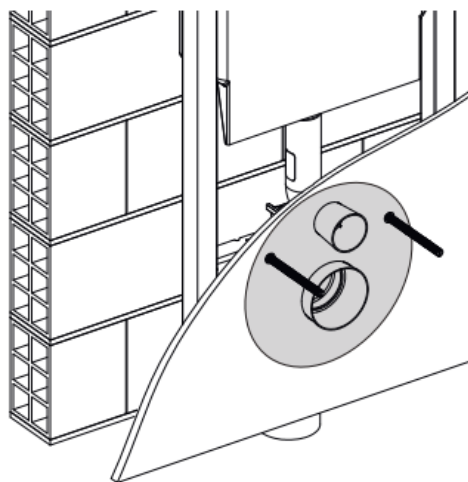


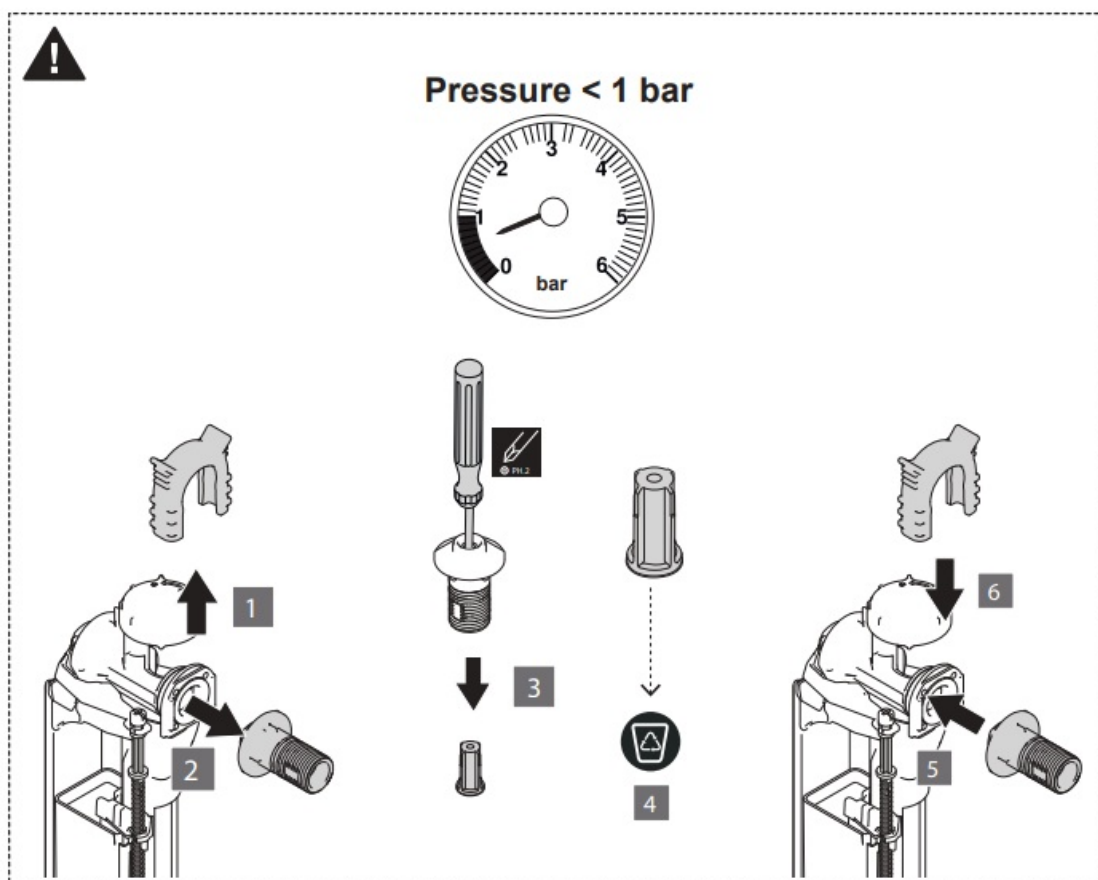
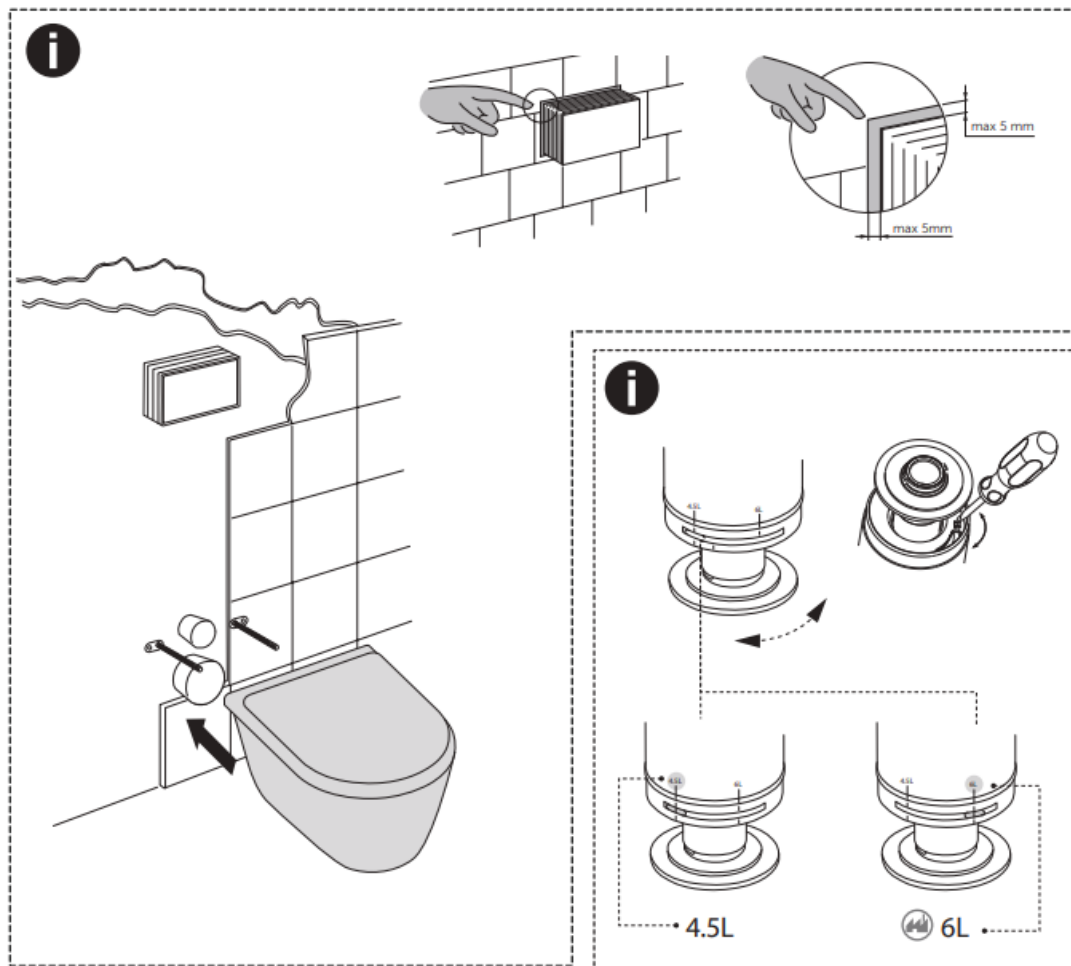




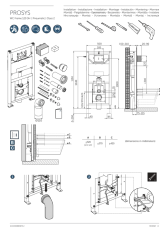


i





Documents / Resources

	<p>Ideal Standard R031567 ProSys 1150mm Pneumatic Adjustable WC Frame [pdf] Installation Guide</p> <p>R031567, R031567 ProSys 1150mm Pneumatic Adjustable WC Frame, ProSys 1150mm Pneumatic Adjustable WC Frame, 1150mm Pneumatic Adjustable WC Frame, Pneumatic Adjustable WC Frame, Adjustable WC Frame, WC Frame, Frame</p>
---	--

References

- [User Manual](#)

[Manuals+](#), [Privacy Policy](#)

This website is an independent publication and is neither affiliated with nor endorsed by any of the trademark owners. The "Bluetooth®" word mark and logos are registered trademarks owned by Bluetooth SIG, Inc. The "Wi-Fi®" word mark and logos are registered trademarks owned by the Wi-Fi Alliance. Any use of these marks on this website does not imply any affiliation with or endorsement.