



Ideal Standard PROSYS Half WC Frame for Wall Mounted Pans Installation Guide

[Home](#) » [Ideal Standard](#) » Ideal Standard PROSYS Half WC Frame for Wall Mounted Pans Installation Guide 



Contents

- [1 Ideal Standard PROSYS Half WC Frame for Wall Mounted Pans](#)
- [2 Product Specifications](#)
- [3 Installation](#)
- [4 Adjusting Settings](#)
- [5 Maintenance](#)
- [6 Frequently Asked Questions \(FAQ\)](#)
- [7 Documents / Resources](#)
 - [7.1 References](#)
- [8 Related Posts](#)

Ideal Standard PROSYS Half WC Frame for Wall Mounted Pans



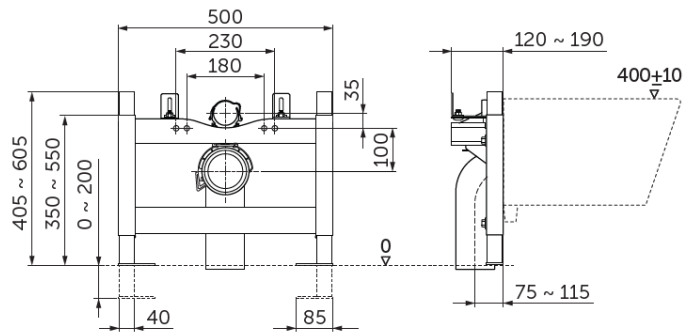
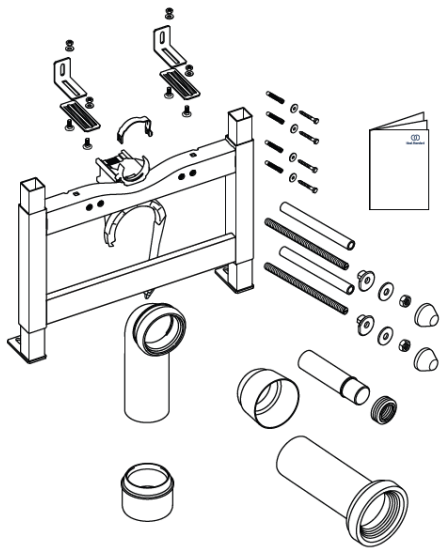
Product Specifications

- Brand: PROSYS
- Model: WC Half Frame
- Dimensions: 405mm x 605mm x 350mm ~ 550mm
- Weight: 35g
- Operating Temperature: 0°C ~ 200°C
- Power Input: 100-500W
- Voltage: 230V
- Pressure Range: 120mm ~ 190mm
- Frequency: 180Hz
- Speed Levels: 0-40
- Material: Plastic

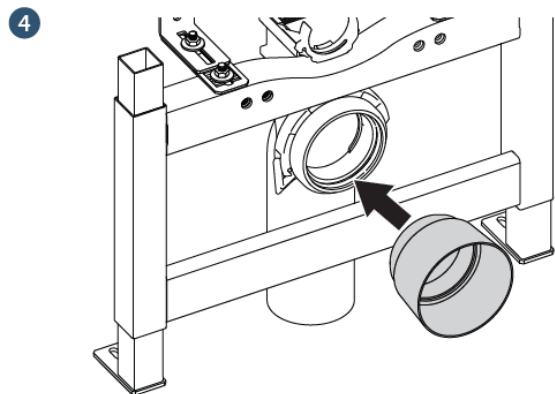
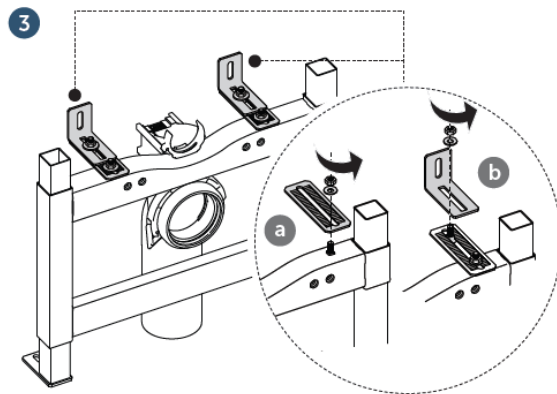
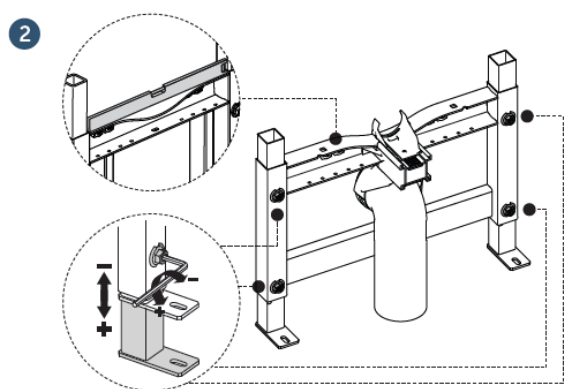
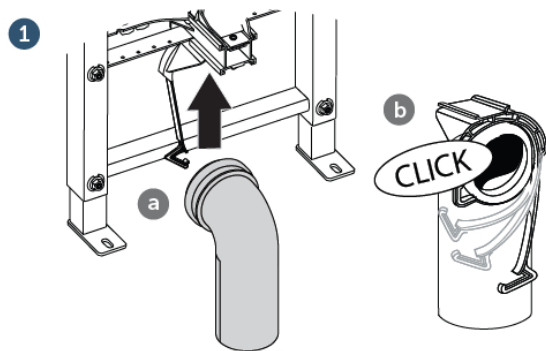
Installation

Follow these steps to install the PROSYS WC Half Frame:

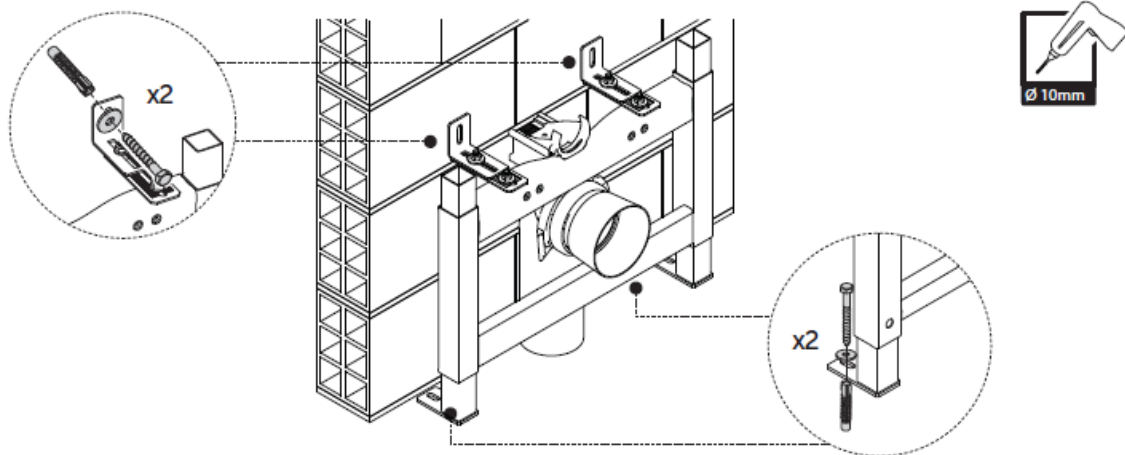
1. Identify the mounting location for the frame.
2. Securely attach the frame using the provided screws.
3. Ensure the frame is level and stable before use.



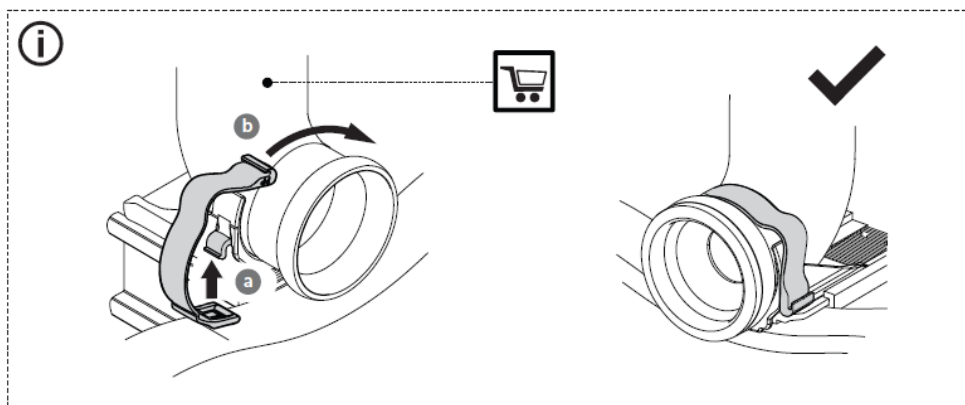
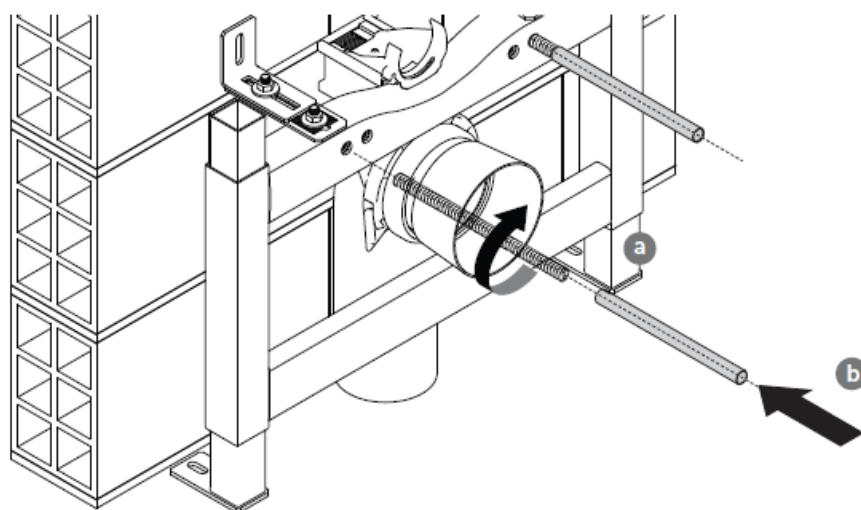
(dimensions in millimetres)

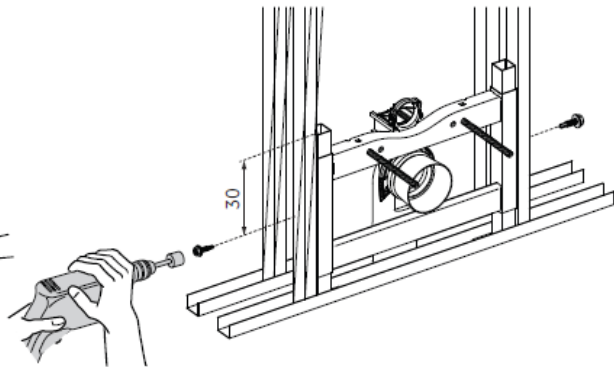
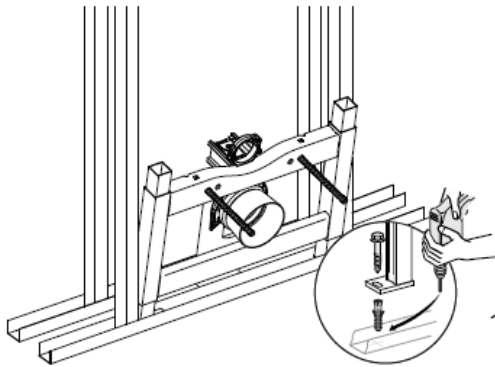
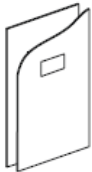
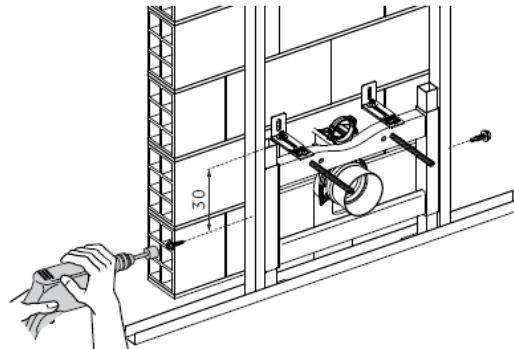
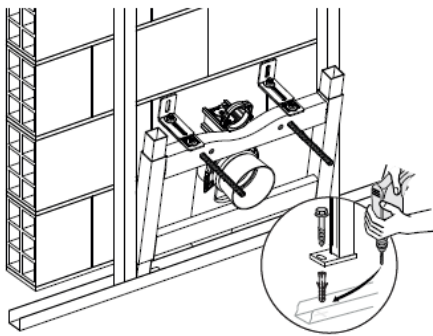
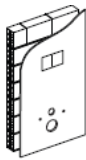


5



6





Powering On

To power on the device, follow these steps:

1. Connect the power cord to a suitable power outlet.
2. Turn on the device using the power switch located on the side of the frame.

Adjusting Settings

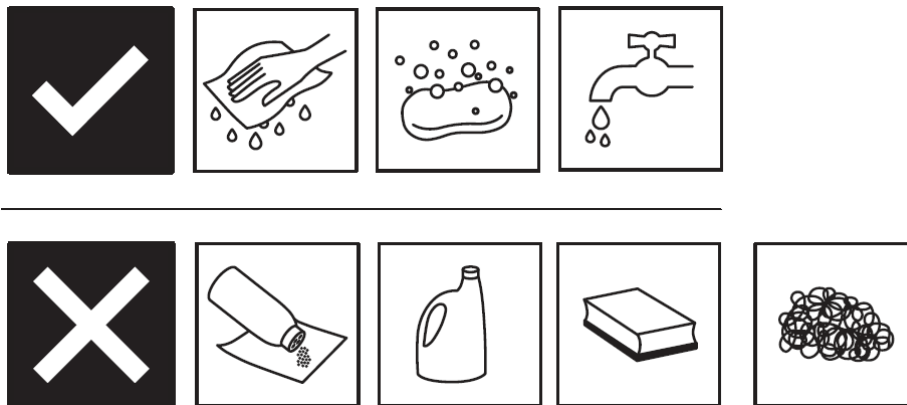
You can adjust the temperature and speed settings of the device as follows:

1. Use the control panel on the device to set the desired temperature.
2. Adjust the speed levels using the buttons provided on the frame.

Maintenance

To ensure proper functionality and longevity of the product, perform regular maintenance tasks:

1. Clean the frame regularly using a damp cloth.
2. Avoid using abrasive cleaners that may damage the surface.
3. Inspect the power cord for any signs of wear and tear.



Frequently Asked Questions (FAQ)

Q: What should I do if the device does not turn on?

A: Check the power source and ensure the power cord is securely connected. If the issue persists, contact customer support.

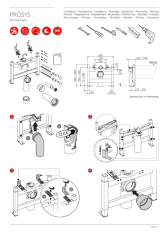
Q: Can I adjust the temperature settings on this device?

A: Yes, you can adjust the temperature settings using the control panel provided on the frame.

Q: Is this product suitable for outdoor use?

A: This product is designed for indoor use only and should not be exposed to outdoor elements.

Documents / Resources

	<p>Ideal Standard PROSYS Half WC Frame for Wall Mounted Pans [pdf] Installation Guide PROSYS, PROSYS Half WC Frame for Wall Mounted Pans, Half WC Frame for Wall Mounted Pans, Frame for Wall Mounted Pans, Wall Mounted Pans, Pans</p>
---	---

References

- [User Manual](#)

[Manuals+](#), [Privacy Policy](#)

This website is an independent publication and is neither affiliated with nor endorsed by any of the trademark owners. The "Bluetooth®" word mark and logos are registered trademarks owned by Bluetooth SIG, Inc. The "Wi-Fi®" word mark and logos are registered trademarks owned by the Wi-Fi Alliance. Any use of these marks on this website does not imply any affiliation with or endorsement.