



IDEAL LED 33Ft Smart Fairy String Lights 100 LEDs APP Instructions

[Home](#) » [IDEAL LED](#) » IDEAL LED 33Ft Smart Fairy String Lights 100 LEDs APP Instructions 

IDEAL LED 33Ft Smart Fairy String Lights 100 LEDs APP Instructions



Contents

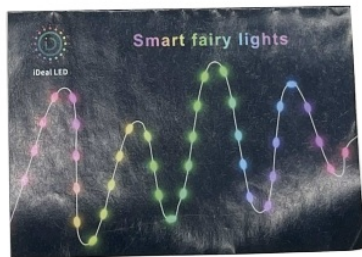
- [1 Intelligent lamp string instructions](#)
- [2 Product Overview](#)
- [3 Documents / Resources](#)
 - [3.1 References](#)
- [4 Related Posts](#)

Intelligent lamp string instructions

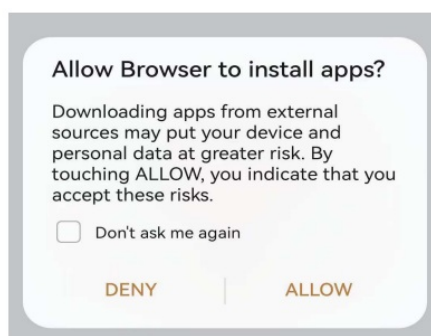
1. Open the box and verify that the accessories are complete: a set of LED lights, a wireless remote control, and

an instruction manual.

2. Pull and fix the lamp string in sequence, then untie the rope in turn, and arrange the lamp string neatly to avoid tangles.
3. Connect the power supply.



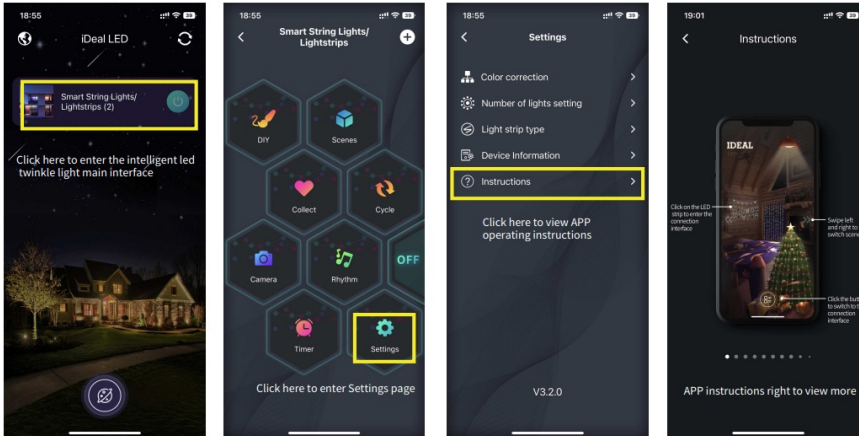
1. on the apple mobile phone App Store to search for the iDeal of Led, and installation. Android devices can download in Google application market
2. scanning the qr code with your mobile phone, direct access to the download page, select and install the corresponding iDeal **LED APP**
3. for the first time to install the APP, "equipment" will pop up "do you allow?"
To install the application? Please check the "allow".



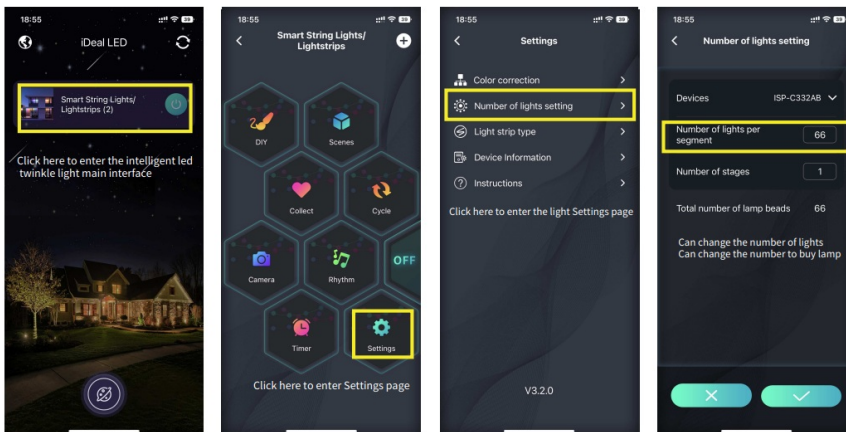
iDeal Led



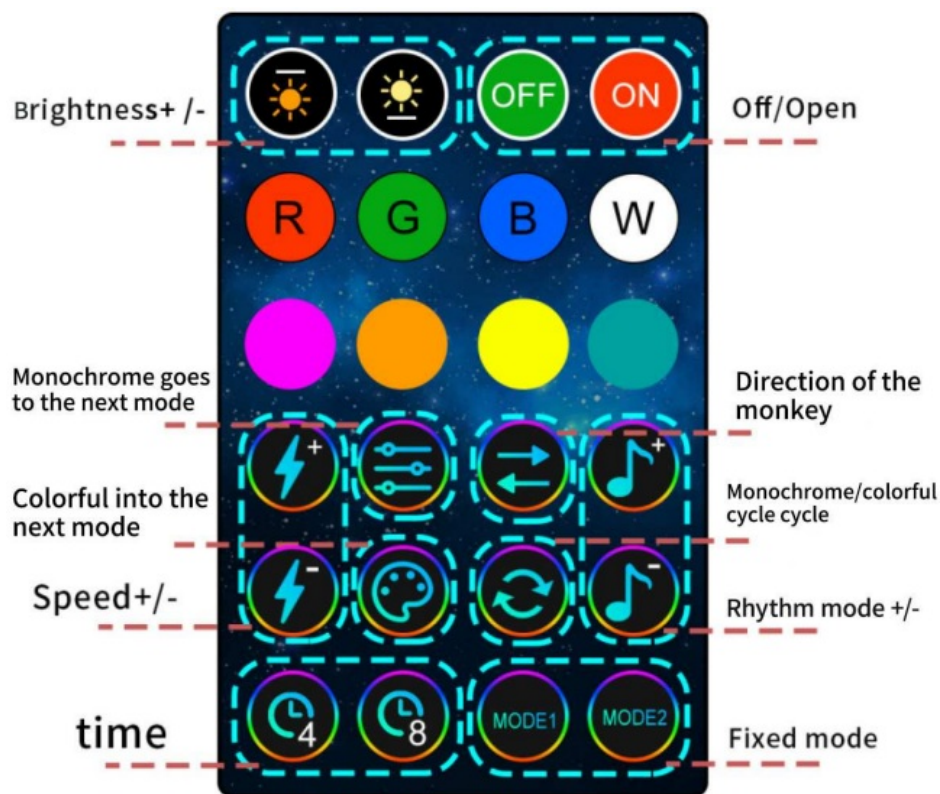
4. After installed APP can examine the APP by setting the operating instructions.



5. According to the purchase of lamp bead number modification lamp, lamp number setting can be set per number of lamps for parallel state can be set up again the number of each lamp section number.



Product Overview



Note:

Do not place this product in water for use.

Do not place the product near the fire source.

If you do not use this product for a long time, cut off the power supply and place it in a cool and dry place.

Please pay attention to children 0-6, to prevent accessories from being eaten during play.

Do not switch frequently, so as not to affect the service life of the product.

Please do not disassemble the product without permission. If there is a knot during use, please do not pull it vigorously.

If the product cannot be used normally, cut off the power supply and contact the after-sales team.

We will test each set of products before shipping, but it may be damaged during shipping

Bad, please test after receiving the product, please contact us in time if you encounter any problems.

We will find the best solution.

About the crossed-out wheeled bin It is the WEEE symbol which indicates that this product is not home waste. You protect the environment when you recycle hazardous waste appropriately. In order to get detailed information about recycling this product please contact your retailer or a local authority.

Symbols



ID: 2A5NB-HCL-001

MADE IN CHINA



Documents / Resources



[IDEAL LED 33Ft Smart Fairy String Lights 100 LEDs APP](#) [pdf] Instructions
33Ft Smart Fairy String Lights 100 LEDs APP, 33Ft, Smart Fairy String Lights 100 LEDs APP, F
airy String Lights 100 LEDs APP, Lights 100 LEDs APP, 100 LEDs APP, LEDs APP

References

-  [TCPDF](#)
- [User Manual](#)

[Manuals+](#), [Privacy Policy](#)

This website is an independent publication and is neither affiliated with nor endorsed by any of the trademark owners. The "Bluetooth®" word mark and logos are registered trademarks owned by Bluetooth SIG, Inc. The "Wi-Fi®" word mark and logos are registered trademarks owned by the Wi-Fi Alliance. Any use of these marks on this website does not imply any affiliation with or endorsement.