

IDEAL IDEAL electrical 42 SpliceLine In Line Wire Connector



IDEAL electrical 42 SpliceLine In Line Wire Connector Instruction Manual

[Home](#) » [IDEAL electrical](#) » IDEAL electrical 42 SpliceLine In Line Wire Connector Instruction Manual 

Contents

- [1 IDEAL electrical 42 SpliceLine In Line Wire Connector](#)
- [2 Product Information](#)
- [3 Installation Instructions](#)
- [4 Wire Ranges](#)
- [5 Technical Data](#)
- [6 WARRANTY](#)
- [7 FAQ](#)
- [8 Documents / Resources](#)
 - [8.1 References](#)
- [9 Related Posts](#)



IDEAL electrical 42 SpliceLine In Line Wire Connector



Specifications

- Product Name: Wire Connector E5238
- Model Number: LR9706
- Standard: IS 0062-1

Product Information

The Wire Connector E5238 is designed for connecting wires securely and safely. It is suitable for solid copper wires and specific types of stranded copper wires within the specified wire gauge ranges.

WARNING

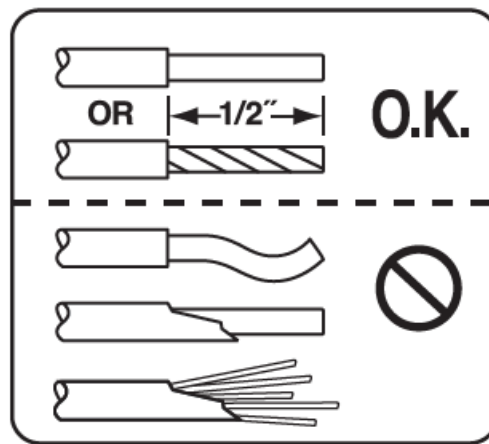
Improper use or installation of this product may cause fire, electrocution, serious personal injury or death. Shut off power to the circuit or remove fuse before using this product. Use only connectors properly sized to the wiring being used. Consult local building codes for installation requirements.

To be sold only with installation instructions.

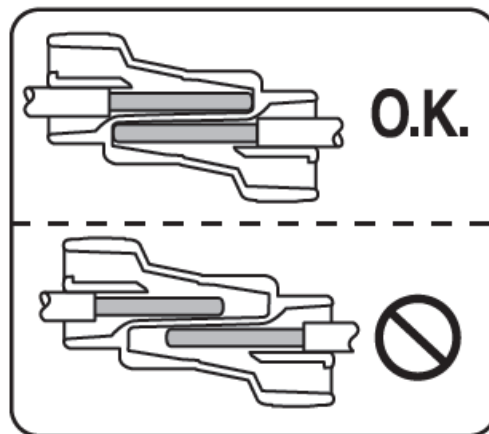
Installation Instructions

1. Wiring must comply with all applicable electrical codes.
2. Turn OFF power before removing or installing connectors.
3. Cleanly strip wires 1/2" (13mm).
4. Grip wire firmly and push conductor into open port. Slightly twist stranded wire counter clockwise while inserting. Use only one conductor per port.
5. Verify conductor is fully inserted to the back of the connector.
6. Connector is reusable on solid wires of the same wire gauge or larger. If reusing connector, cut and re-strip conductors.
7. In order to remove a wire, pull and twist the wire back and forth.
8. DO NOT RE-USE connector on stranded wire.

Strip Length



Introduction



Wire Ranges

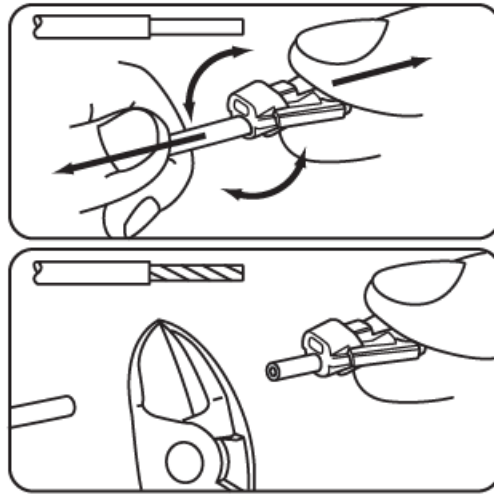
- **Solid Copper (Reusable)** 12-20 AWG
- **Stranded Copper (Non-Reusable)** 12-16 AWG (< 19 Stranded); 18 AWG (7 Stranded)
- DO NOT use with 16 AWG (26 Stranded)
- Stranded Copper Tin-Bonded (Non-Reusable) 14-18 AWG (< 19 Stranded)

WARNING: TO BE USED ONLY WITH COPPER-COPPER WIRE COMBINATIONS. DO NOT USE ON ALUMINUM WIRE. For use in dry locations only. USE ONLY INSIDE AN APPROVED ELECTRICAL ENCLOSURE. Consult IDEAL for a complete table of UL Listed Certified combinations.

Technical Data

- **Temperature Rating:** 105°C (221°F) maximum.
- **Voltage Rating:** 600V/20A maximum building wire. 1000V in signs and lighting fixtures.

Removal



WARRANTY

www.idealind.com

WARNING


Cancer and Reproductive Harm : www.P65Warnings.ca.gov.

IS 0062-1


FAQ

- **Q: Can I reuse the connectors on stranded wires?**
 - A: No, the connectors are not reusable on stranded wires. They are only reusable on solid wires of the same gauge or larger.
- **Q: What wire combinations are suitable for use with this connector?**
 - A: This connector is suitable for copper-copper wire combinations within the specified wire gauge ranges.

Documents / Resources

	IDEAL electrical 42 SpliceLine In Line Wire Connector [pdf] Instruction Manual 42, 42 SpliceLine In Line Wire Connector, SpliceLine In Line Wire Connector, Line Wire Connector, Wire Connector
---	--

References

-  P65Warnings.ca.gov
- [User Manual](#)

[Manuals+.](#) [Privacy Policy](#)

This website is an independent publication and is neither affiliated with nor endorsed by any of the trademark owners. The "Bluetooth®" word mark and logos are registered trademarks owned by Bluetooth SIG, Inc. The "Wi-Fi®" word mark and logos are registered trademarks owned by the Wi-Fi Alliance. Any use of these marks on this website does not imply any affiliation with or endorsement.