

IDEA EVO8-P 2 Way Compact Line Array System



IDEA EVO8-P 2 Way Compact Line Array System User Guide

[Home](#) » [iDea](#) » IDEA EVO8-P 2 Way Compact Line Array System User Guide 

Contents

- [1 IDEA EVO8-P 2 Way Compact Line Array System](#)
- [2 Product Information](#)
- [3 Product Usage Instructions:](#)
- [4 2 Way Compact Line-Array System](#)
- [5 TECHNICAL DATA](#)
- [6 WARRANTY](#)
- [7 DECLARATION OF CONFORMITY](#)
- [8 Documents / Resources](#)
 - [8.1 References](#)



IDEA EVO8-P 2 Way Compact Line Array System



Product Information

Specifications:

- Model: EVO8-P
- Type: 2 Way Compact Line-Array System
- Enclosure Design: LF Transducers, HF Transducers
- Power Handling (RMS): 320 W
- Nominal Impedance: 16 ohms
- SPL (Continuous/Peak): 26 kg
- Frequency Range (-10 dB): Not specified
- Frequency Range (-3 dB): Not specified
- Coverage: Not specified
- Dimensions (WxHxD): 223 mm x 499 mm x 428 mm
- Weight: 26 kg
- Connectors: NL-4 PINOUT Input Parallel Signal
- Cabinet Construction: High-quality birch plywood
- Grille Finish: Not specified
- Rigging Hardware: Integral heavy duty 4-point steel rigging system

Product Usage Instructions:

Installation:

This product must be installed by qualified professionals following safe practices and local regulations. Refer to the owner's manual for detailed installation instructions.

Setup:

1. Ensure the product is placed on a stable surface.
2. Connect the NL-4 PINOUT input for signal transmission.
3. Adjust the rigging hardware for proper mounting.

Operation:

1. Power on the EVO8-P system.
2. Adjust volume and settings as needed.
3. Monitor performance and make adjustments if required.

FAQ

• Q: Can the EVO8-P be used outdoors?

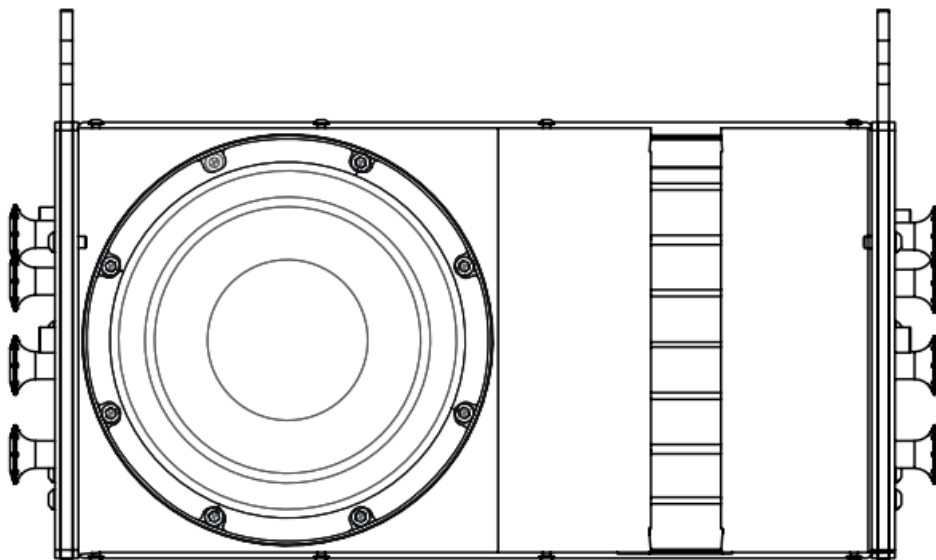
A: Yes, the EVO8-P is treated with a weather-resistant coating, making it suitable for outdoor use.

• Q: What is the warranty on the EVO8-P?

A: Refer to the warranty section in the owner's manual for details on warranty coverage and how to claim guarantee service or replacement.

2 Way Compact Line-Array System

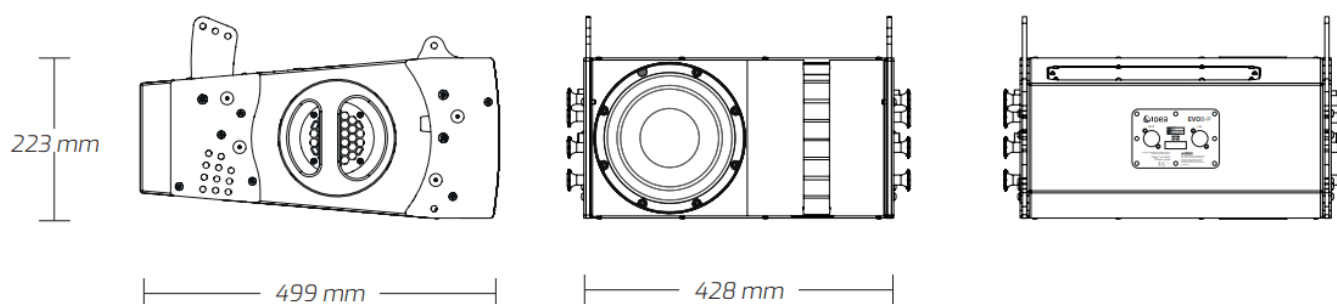
- EVO8-P is an ideal line-array element for mobile and portable sound reinforcement and those installations that need for a high SPL sound system which can be discreetly integrated with the aesthetics of the venue. The excellent power density and scalability of EVO8-P make it a perfect tool for a wide variety in professional sound reinforcement applications. EVO8-P is a passive line-array element with a sophisticated passive crossover to provide a smooth, linear response throughout the useful frequency range.
- EVO8-P line-array elements feature a HF assembly with a 3" compression driver and IDEA's proprietary Hi-Q 6-slot waveguide allowing for minimum vertical gap between array elements and providing optimum element coupling while reducing artifacts and DSP adjustments. For the LF/MF sections, EVO8-P mounts a high-performance 250 W 8" woofer.
- Built in Europe using 15mm high quality birch plywood in heavily internally braced solid loudspeaker cabinets, EVO8-P is treated with IDEA proprietary Aquaforce weather resistant touring coating finish and is fitted with an extra strong integral heavy-duty 4-point steel rigging system.



TECHNICAL DATA

Enclosure design	10° Trapezoidal
LF Transducers	8" High performance woofer
HF Transducers	3" Compression Driver
Power Handling (RMS)	320 W
Nominal Impedance	16 Ohm
SPL (Continuous/Peak)	127/133 dB SPL
Frequency Range (-10 dB)	82 - 18000 Hz
Frequency Range (-3 dB)	95 - 16000 Hz
Coverage	Vertical: Array length-splay dependent - Horizontal: 100°
Dimensions (WxHxD)	428 x 223 x 499 mm
Weight	26 kg
Connectors	2 x Neutrik speakON® NL-4 in parallel
+/-1	Input
+/-2	Parallel Signal
Cabinet Construction	15 mm Birch Plywood
Grille	1.5 mm perforated weatherised steel with protective foam
Finish	Durable IDEA proprietary Aquaforce High Resistance paint coating process
Rigging Hardware	High-resistance, coated steel integrated 4-point rigging hardware 10 angulation points (0°-10° internal splay angles in 1° steps)
Handles	2 integrated handles
Accessories	Rigging Frame (RF EVO8) Raisers adaptors for stacked set-ups (RF EVO8 STK) Pole adaptor (PA EVO8) 35 mm Pole (K&M 21338)

TECHNICAL DRAWINGS



WARNINGS AND SAFETY GUIDELINES

- Read this document thoroughly, follow all safety warnings and keep it for future reference.
- The exclamation mark inside a triangle indicates that whatever repairing and component replacement operations must be done by qualified and authorized personnel.



- No user serviceable parts inside.
- Only use accessories tested and approved by IDEA and supplied by the manufacturer or an authorized dealer.

- Installations, rigging and suspension operations must be done by qualified personnel.
- Only use accessories specified by IDEA, complying with maximum loads specifications and following local safety regulations.
- Read the specifications and connection instructions before proceeding to connect the system and use only cabling supplied or recommended by IDEA. Connection of the system should be done by qualified personnel.



- Professional sound reinforcement systems can deliver high SPL levels that may result in hearing damage. Do not stand close to the system while in use.
- Loudspeakers produce magnetic field even while they are not in use or even when disconnected. Do not place or expose loudspeakers to any device that is sensitive to magnetic fields such as television monitors or data storage magnetic material.



- Disconnect the equipment during lightning storms and when it is not to be used for a long time.
- Do not expose this device to rain or moisture.
- Do not place any objects containing liquids, such as bottles or glasses, on the top of the unit. Do not splash liquids on the unit.
- Clean with a wet cloth. Do not use solvent-based cleaners.
- Regularly check the loudspeaker housings and accessories for visible signs of wear and tear, and replace them when necessary.
- Refer all servicing to qualified service personnel.
- This symbol on the product indicates that this product should not be treated as household waste. Follow local regulation for recycling of electronic devices.



- IDEA declines any responsibility from misuse that may result in malfunction or damage of the equipment.

WARRANTY

- All IDEA products are guaranteed against any manufacturing defect for a period of 5 years from date of purchase for acoustical parts and 2 years from date of purchase for electronic devices.
- The guarantee excludes damage from incorrect use of the product.
- Any guarantee repair, replacement and servicing must be exclusively done by the factory or any of authorized service centres.
- Do not open or intend to repair the product; otherwise servicing and replacement will not be applicable for guarantee repair.
- Return the damaged unit, at shipper's risk and freight prepaid, to the nearest service centre with a copy of the purchase invoice in order to claim guarantee service or replacement.

DECLARATION OF CONFORMITY

- I MAS D ELECTROACÚSTICA SL

- POL. A TRABE 19-20 15350 CEDEIRA (GALICIA – SPAIN)
- DECLARES THAT: EVO8-P
- COMPLIES WITH THE FOLLOWING EU DIRECTIVES:
- ROHS (2002/95/CE) RESTRICTAION OF HAZARDOUS SUBSTANCES
- LVD (2006/95/CE) LOW VOLTAGE DIRECTIVE
- EMC (2004/108/CE) ELECTROMAGNETIC COMPATIBILITY
- WEEE (2002/96/CE) WASTE OF ELECTRIC AND ELECTRONIC EQUIPMENT
- EN 60065: 2002 AUDIO, VIDEO AND SIMILAR ELECTRONIC APPARATUS. SAFETY REQUIREMENTS.
- EN 55103-1: 1996 ELECTROMAGNETIC COMPATIBILITY: EMISSION
- EN 55103-2: 1996 ELECTROMAGNETIC COMPATIBILITY: IMMUNITY

www.ideaproaudio.com





For further information scan the QR Code



or refer to the following web address: www.ideaproaudio.com/product-detail/evo8p

IDEA is always in pursuit of better performance, greater reliability and design features.
Technical specifications and minor finish details may vary without notice in order to improve our products.
©2023 – I MAS D Electroacústica SL
Pol. A Trabe 19-20 15350 Cedeira (Galicia – Spain)
QS_EVO8-P_EN_v3.3

Documents / Resources

	<p>IDEA EVO8-P 2 Way Compact Line Array System [pdf] User Guide EVO8-P 2 Way Compact Line Array System, EVO8-P, 2 Way Compact Line Array System, Compact Line Array System, Line Array System, Array System</p>
	<p>IDea EVO8-P 2 Way Compact Line Array System [pdf] User Guide EVO8-P 2 Way Compact Line Array System, EVO8-P, 2 Way Compact Line Array System, Compact Line Array System, Line Array System, Array System, System</p>

References

-  [IDEA Pro Audio](#)
-  [EVO8-P | IDEA Pro Audio](#)
- [User Manual](#)

[Manuals+](#), [Privacy Policy](#)

This website is an independent publication and is neither affiliated with nor endorsed by any of the trademark owners. The "Bluetooth®" word mark and logos are registered trademarks owned by Bluetooth SIG, Inc. The "Wi-Fi®" word mark and logos are registered trademarks owned by the Wi-Fi Alliance. Any use of these marks on this website does not imply any affiliation with or endorsement.