




idatastart HCA(320) Add On Security Kit Instructions

[Home](#) » [idataSTarT](#) » idatastart HCA(320) Add On Security Kit Instructions 

Contents

- [1 idatastart HCA\(320\) Add On Security Kit](#)
- [2 TERMS OF USE](#)
- [3 SECURITY KIT LAYOUT](#)
- [4 ADS-SEC WITH HCA\(320\) OR HCA\(384\)](#)
- [5 ADS-SEC WITH HCX\(192\)](#)
- [6 ADS-SEC WITH HCX\(512\)](#)
- [7 Documents / Resources](#)
 - [7.1 References](#)



idatastart HCA(320) Add On Security Kit



TERMS OF USE

Automotive Data Solutions Inc. (“ADS”) products are strictly intended for installation by Certified Technicians who are employed by a registered business specialized in the installation of automotive aftermarket electronics products. Prior to beginning installation of an ADS product in a vehicle, it is the Certified Technician’s responsibility to review the most current Product Guide, Install Guide and vehicle-specific notes available in Weblink®. ADS is not responsible for any damages whatsoever, including but not limited to any consequential damages, incidental damages, damages for loss of time, loss of earnings, loss of profit, commercial loss, loss of economic opportunity and the like that may or may not have resulted from the use, misuse, improper installation or operation of its products. ADS reserves itself the right to suspend any Weblink® account without notice and decline to offer technical support to non-Certified Technicians, noncompliant Certified Technicians or end users.

WELCOME

Congratulations on the purchase of your ADS-SEC add-on security kit for iDataStart HC series remote starters. This kit includes a multi-tone siren, a security LED, and a digital multi sensor featuring shock, tilt, and glass break detection. You are now a few simple steps away from enjoying your new remote starter unit’s security kit with enhanced features. Before starting your installation, please ensure that your ADS-SEC security kit is programmed with the correct firmware and that you carefully review the install guide.

NEED HELP?

- 1 866 427-2999
- support@idatalink.com

- idatalink.com/support
- www.12voltage.com/forum
- www.facebook.com/groups/idadatech
- www.idatalink.com

Scan QR code for setup and install video



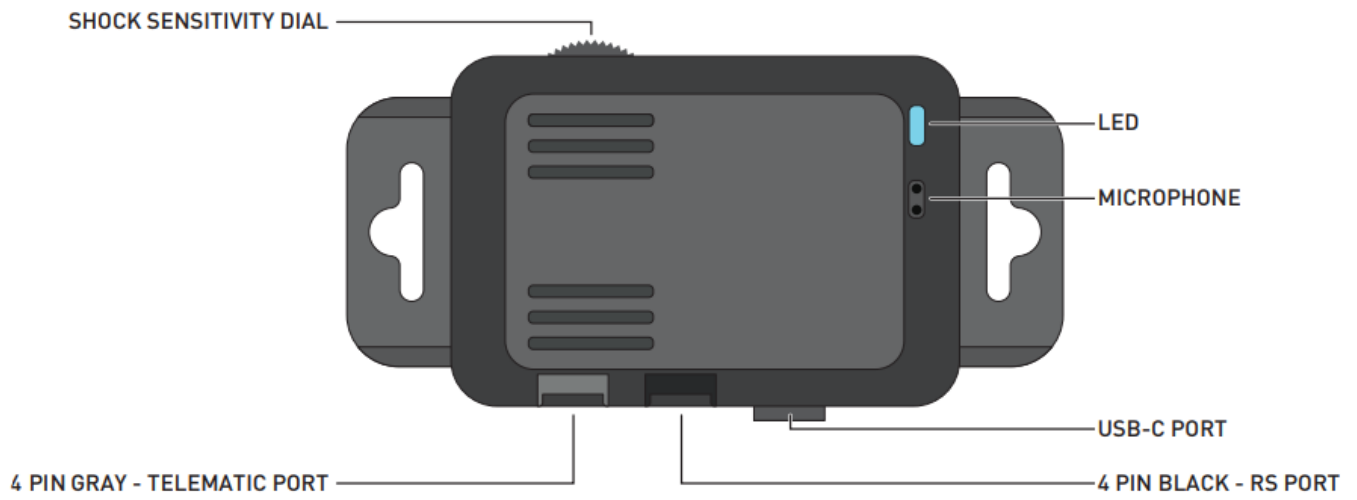
SECURITY KIT LAYOUT

BOX CONTENTS

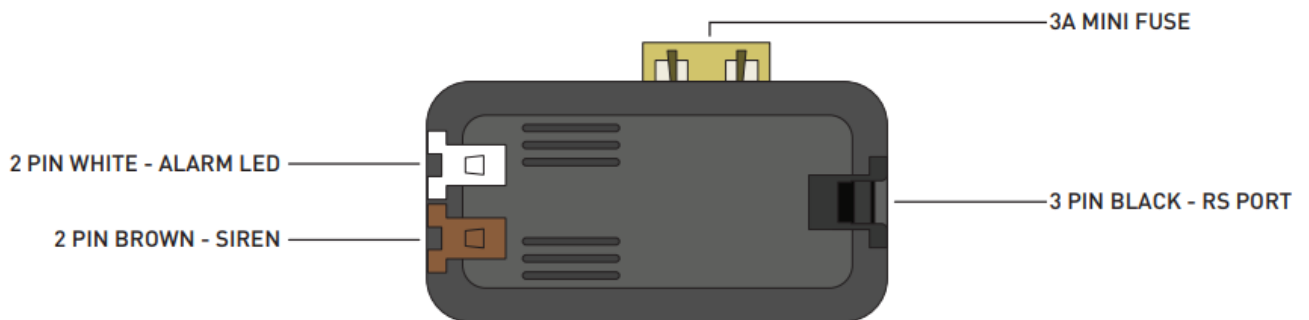
- DIGITAL MULTI SENSOR (SEC-DMS)
- SECURITY LED (SEC-LED)
- SIREN (SEC-SIR)
- SIREN ADAPTER (SEC-SIR-ADP)
- HARNESSES:
- DMS ADAPTER CABLE (GREEN TO BROWN 4 PIN)
- SIREN ADAPTER (3 PIN BLACK)
- DMS DATA CABLE (BLACK TO BROWN 4 PIN)
- HARDWARE BAG 1:
- (4) SELF TAPPING SCREWS
- (2) ZIP TIES
- (1) SIREN MOUNTING BRACKET
- HARDWARE BAG 2:
- (4) LOOSE WIRES
- (1) EMPTY BLACK 12 PIN CONNECTOR HOUSING

DIGITAL MULTI SENSOR (SEC-DMS)

DIGITAL MULTI SENSOR (SEC-DMS)

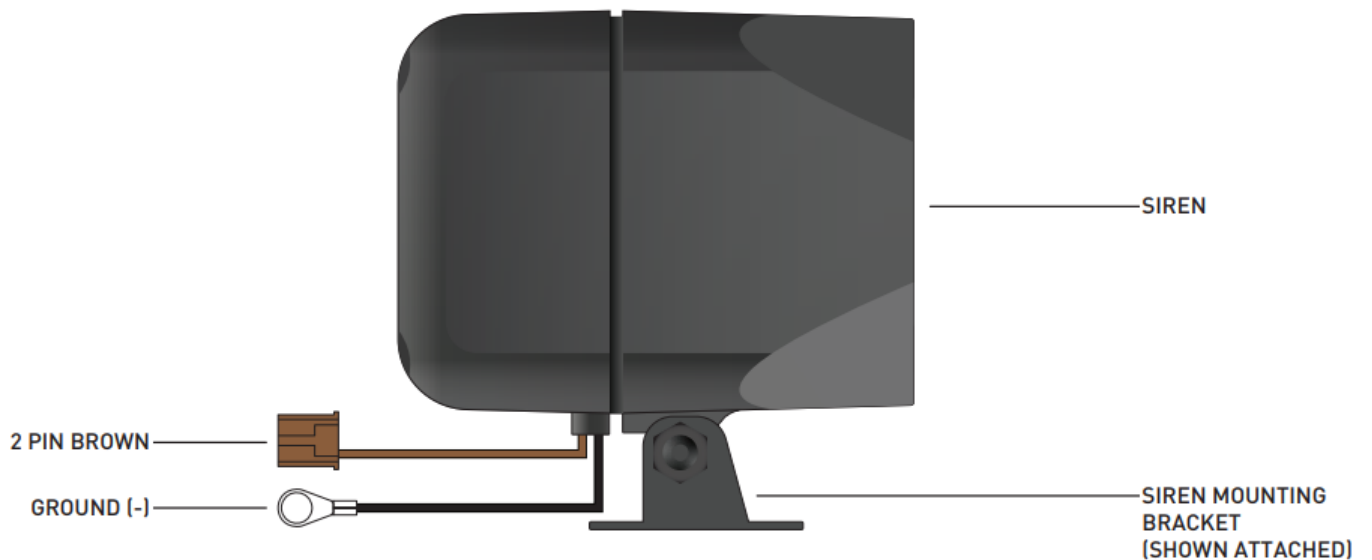


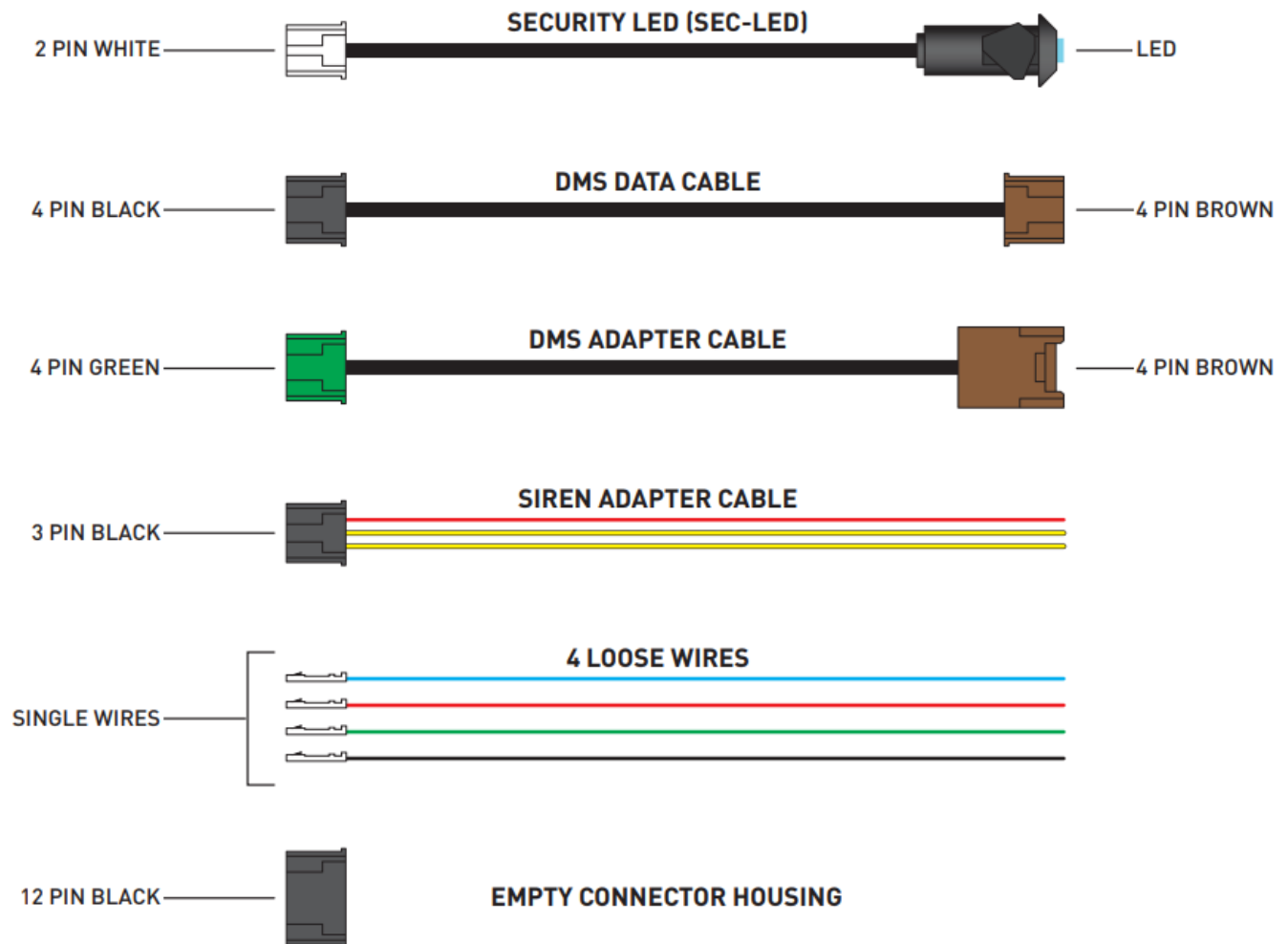
SIREN ADAPTER (SEC-SIR-ADP)



SIREN (SEC-SIR)

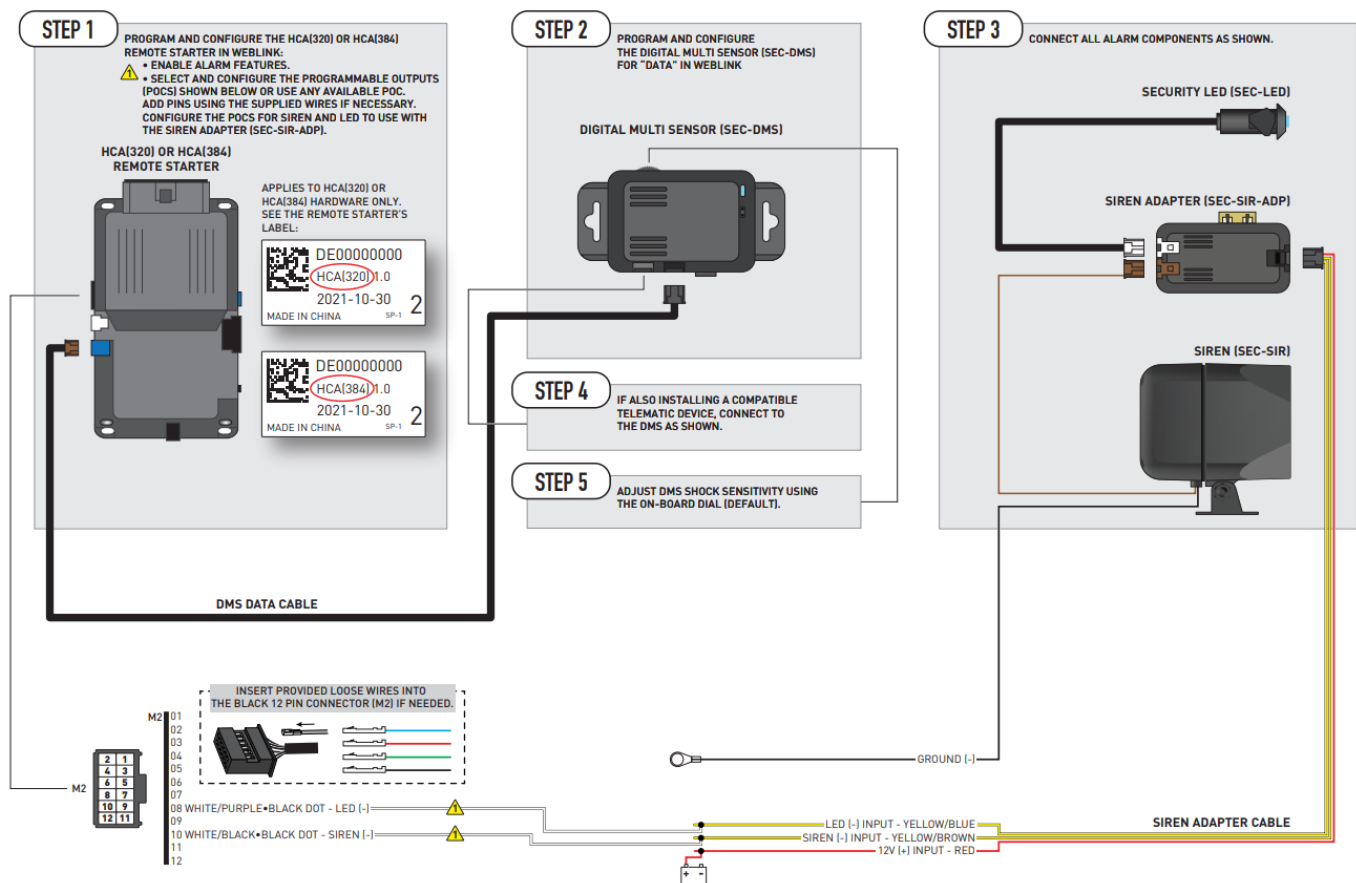
SIREN (SEC-SIR)





TYPE 1 – WIRING DIAGRAM

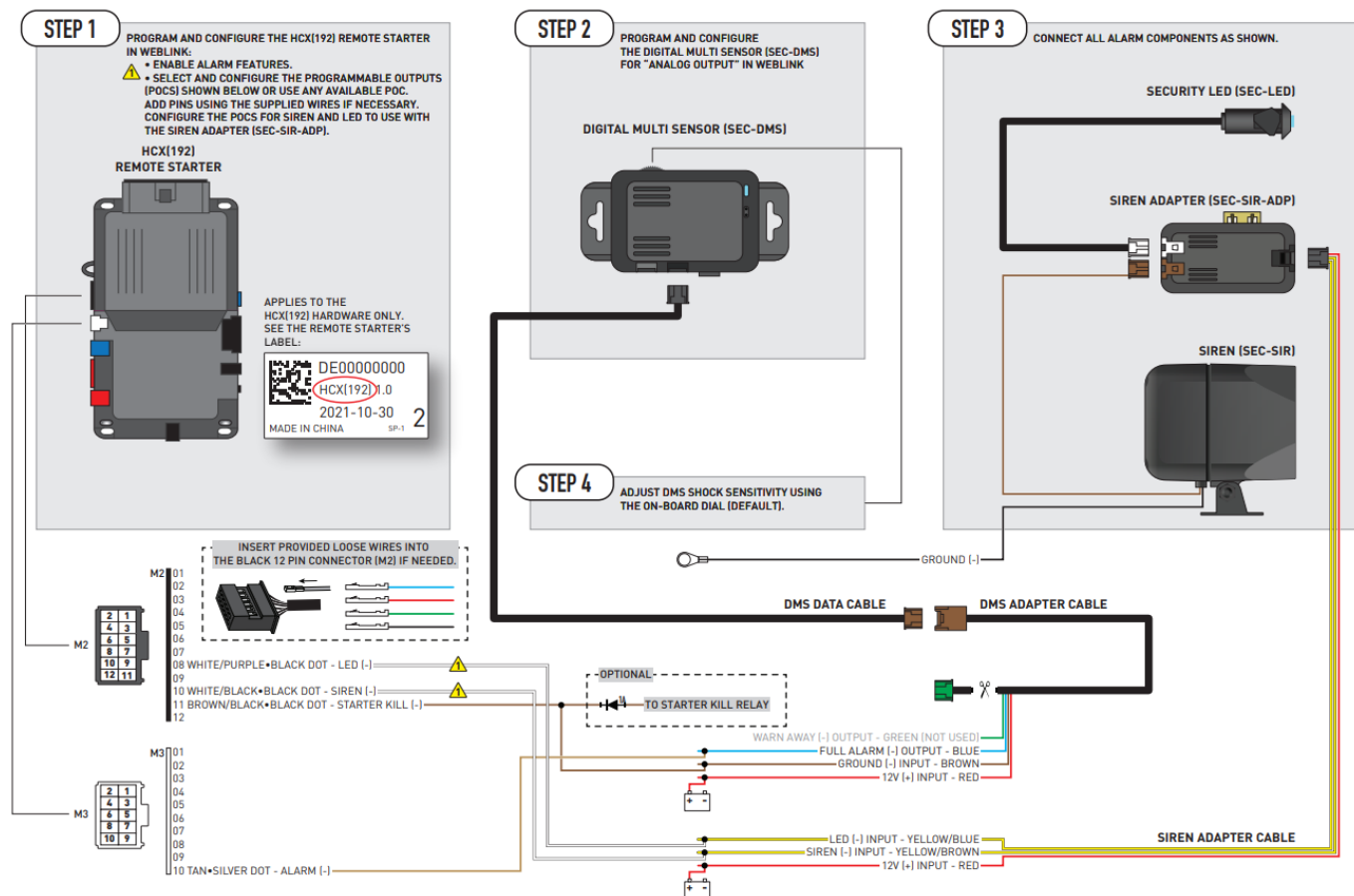
ADS-SEC WITH HCA(320) OR HCA(384)



1. **STEP 1** PROGRAM AND CONFIGURE THE HCA(320) OR HCA(384) PROGRAM AND CONFIGURE THE HCA(320) OR HCA(384) REMOTE STARTER IN WEBLINK: REMOTE STARTER IN WEBLINK:
 - ENABLE ALARM FEATURES. ENABLE ALARM FEATURES.
 - SELECT AND CONFIGURE THE PROGRAMMABLE OUTPUTS SELECT AND CONFIGURE THE PROGRAMMABLE OUTPUTS (POCS) SHOWN BELOW OR USE ANY AVAILABLE POC. (POCS) SHOWN BELOW OR USE ANY AVAILABLE POC. ADD PINS USING THE SUPPLIED WIRES IF NECESSARY. ADD PINS USING THE SUPPLIED WIRES IF NECESSARY. CONFIGURE THE POCs FOR SIREN AND LED TO USE WITH THE SIREN ADAPTER (SEC-SIR-ADP). THE SIREN ADAPTER (SEC-SIR-ADP).
 - HCA(320) OR HCA(384) REMOTE STARTER
 - APPLIES TO HCA(320) OR HCA(384) HARDWARE ONLY. SEE THE REMOTE STARTER'S LABEL:
2. **STEP 2** PROGRAM AND CONFIGURE THE DIGITAL MULTI SENSOR (SEC-DMS) THE DIGITAL MULTI SENSOR (SEC-DMS) FOR "DATA" IN WEBLINK FOR "DATA" IN WEBLINK DIGITAL MULTI SENSOR (SEC-DMS)
3. **STEP 3** CONNECT ALL ALARM COMPONENTS AS SHOWN. CONNECT ALL ALARM COMPONENTS AS SHOWN.
4. **STEP 4** IF ALSO INSTALLING A COMPATIBLE IF ALSO INSTALLING A COMPATIBLE TELEMATIC DEVICE, CONNECT TO TELEMATIC DEVICE, CONNECT TO THE DMS AS SHOWN. THE DMS AS SHOWN.
5. **STEP 5** ADJUST DMS SHOCK SENSITIVITY USING ADJUST DMS SHOCK SENSITIVITY USING THE ON-BOARD DIAL (DEFAULT). THE ON-BOARD DIAL (DEFAULT).

TYPE 2 – WIRING DIAGRAM

ADS-SEC WITH HCX(192)



1. PROGRAM AND CONFIGURE THE HCX(192) REMOTE STARTER PROGRAM AND CONFIGURE THE HCX(192) REMOTE STARTER IN WEBLINK:IN WEBLINK:
 - ENABLE ALARM FEATURES. ENABLE ALARM FEATURES.
 - SELECT AND CONFIGURE THE PROGRAMMABLE OUTPUTS SELECT AND CONFIGURE THE PROGRAMMABLE OUTPUTS (POCS) SHOWN BELOW OR USE ANY AVAILABLE POC. (POCS) SHOWN BELOW OR USE ANY AVAILABLE POC.
 - ADD PINS USING THE SUPPLIED WIRES IF NECESSARY. ADD PINS USING THE SUPPLIED WIRES IF NECESSARY. CONFIGURE THE POCs FOR SIREN AND LED TO USE WITH CONFIGURE THE POCs FOR SIREN AND LED TO USE WITH THE SIREN ADAPTER (SEC-SIR-ADP).THE SIREN ADAPTER (SEC-SIR-ADP).
2. **STEP 2** PROGRAM AND CONFIGURE PROGRAM AND CONFIGURE THE DIGITAL MULTI SENSOR (SEC-DMS)THE DIGITAL MULTI SENSOR (SEC-DMS) FOR "ANALOG OUTPUT" IN WEBLINKFOR "ANALOG OUTPUT" IN WEBLINK
3. **STEP 3** CONNECT ALL ALARM COMPONENTS AS SHOWN.CONNECT ALL ALARM COMPONENTS AS SHOWN.
4. **STEP 4** ADJUST DMS SHOCK SENSITIVITY USINGADJUST DMS SHOCK SENSITIVITY USING THE ON-BOARD DIAL (DEFAULT).THE ON-BOARD DIAL (DEFAULT).


TYPE 3 – WIRING DIAGRAM

ADS-SEC WITH HCX(512)

- Patent No. US 8,856,780 CA 2759622

Automotive Data Solutions Inc. © 2024

Documents / Resources

	idatastart HCA(320) Add On Security Kit [pdf] Instructions HCA 320, HCA 384, HCX 192, HCX 512, HCA 320 Add On Security Kit, HCA 320, Add On Security Kit, Security Kit, Kit
---	--

References

- [i](#) [iDatalink - Support • 1.866.427.2999](#)
- [i](#) [iDatalink - Home](#)
- [User Manual](#)

Manuals+. [Privacy Policy](#)

This website is an independent publication and is neither affiliated with nor endorsed by any of the trademark owners. The "Bluetooth®" word mark and logos are registered trademarks owned by Bluetooth SIG, Inc. The "Wi-Fi®" word mark and logos are registered trademarks owned by the Wi-Fi Alliance. Any use of these marks on this website does not imply any affiliation with or endorsement.