



idatalink DL-NI3 Push To Start Vehicle Installation Guide

[Home](#) » [idataLink](#) » idatalink DL-NI3 Push To Start Vehicle Installation Guide 

Contents

- [1 idatalink DL-NI3 Push To Start Vehicle](#)
- [2 Product Information](#)
- [3 Product Usage Instructions](#)
- [4 Specifications](#)
- [5 CARTRIDGE INSTALLATION](#)
- [6 MODULE PROGRAMMING PROCEDURE](#)
- [7 PUSH TO START VEHICLE TAKE OVER PROCEDURE – TO THE VEHICLE OWNER](#)
- [8 Documents / Resources](#)
 - [8.1 References](#)
- [9 Related Posts](#)



idatalink DL-NI3 Push To Start Vehicle



Product Information

Specifications

- Make: DL-NI3 Nissan Frontier Intelli-Key PTS AT
- Model Year: 2020-2024
- Install Type: Type 2
- CAN Lights: Type A

Product Usage Instructions

Cartridge Installation

Slide the cartridge into the unit, ensuring the button under the LED is noticed.

Doorlock Interface

Ready for Module Programming Procedure. Follow the steps below:

1. ENGINE START x2: Push the start button twice to the ON position.
2. ENGINE START x1: Push the start button once to the OFF position.
3. Wait for the LED to turn solid BLUE for 2 seconds.
4. Module Programming Procedure completed.

Push to Start Vehicle Take Over Procedure – To the Vehicle Owner:

NOTE: Follow this procedure during remote starter runtime before entering the vehicle with all doors closed.

1. Press UNLOCK on aftermarket remote or OEM fob, then press and release BRAKE pedal.
2. Open the vehicle door, enter with the OEM FOB, and close the door.
3. Wait for the LED indicator of the push button to turn ON.
4. Wait for the ORANGE LED indicator of the push button to turn on.
5. Push to Start vehicle take over procedure completed.

FAQ

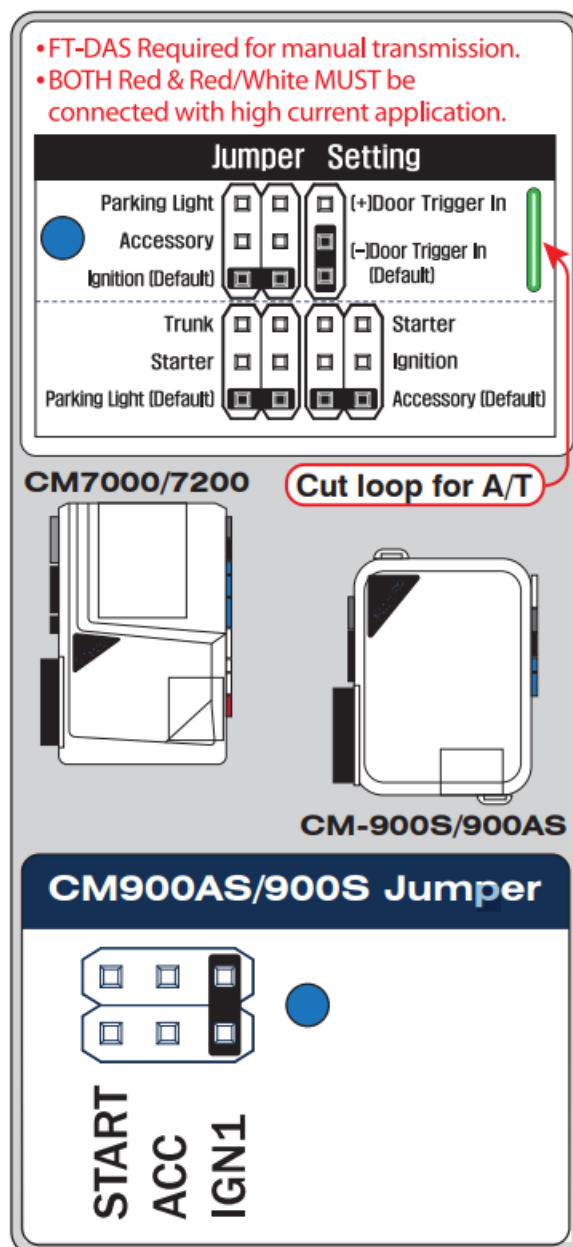
Frequently Asked Questions:

Q: What should I do if the vehicle displays error messages after not following the start procedure?

A: Failure to follow the procedure may result in vehicle displaying CHECK ENGINE or TIRE PRESSURE error messages. In such cases, it is recommended to restart the procedure correctly.

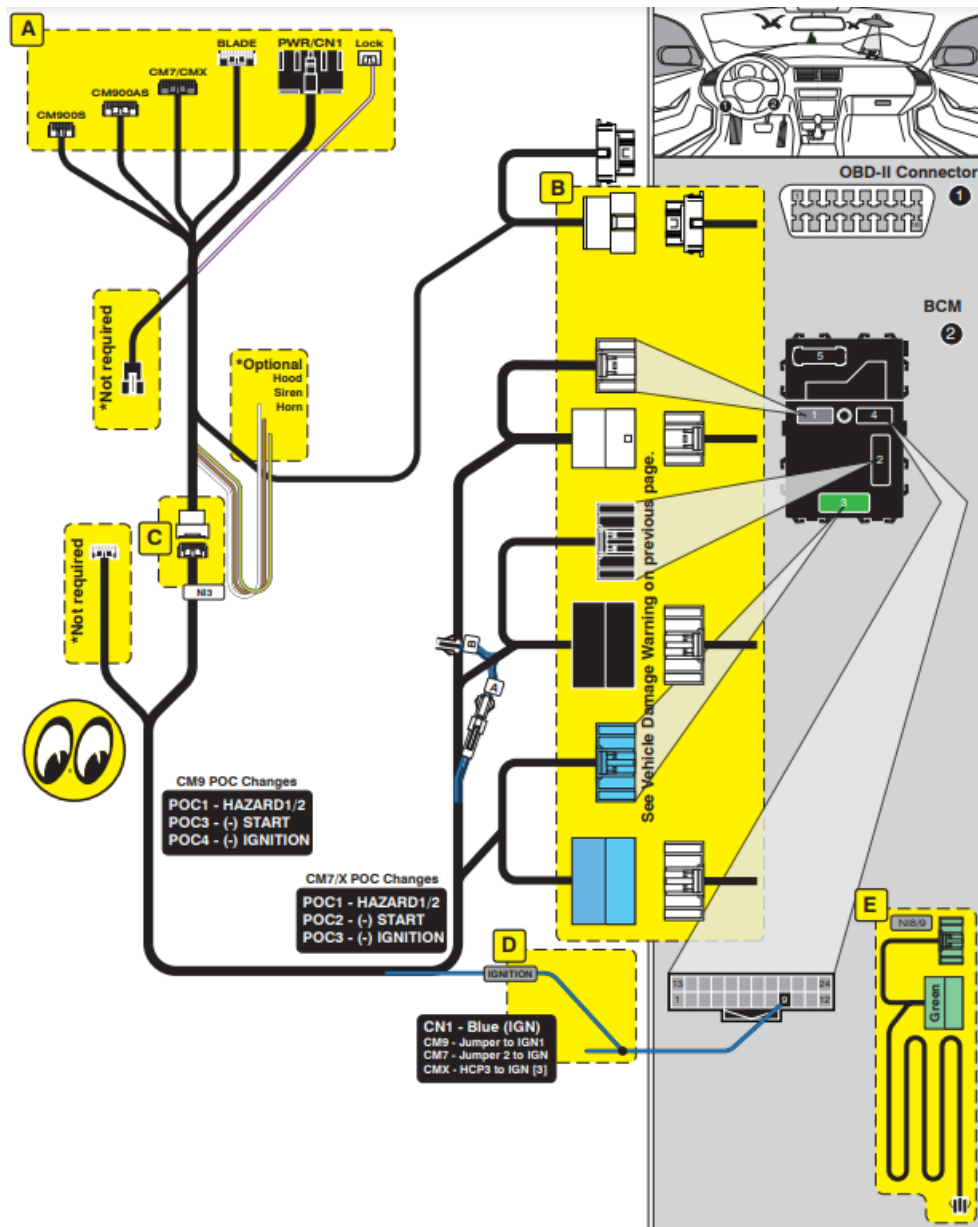
Specifications

Make	Model	Year	Install	CAN	Lights	BCM	POC	I/O Changes
DL-NI3 Nissan	Frontier Intelli-Key PTS AT	2020-24	Type 2	Type A	Park / Auto POC 1 Hazard1/2	RSC	See note	Green White/Blue None/IGN



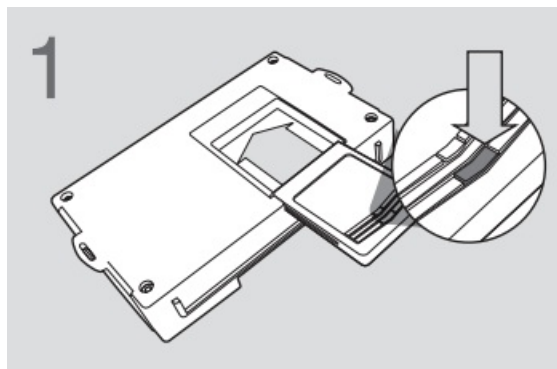
FTI-NSP2 – DL-NI3 – Type 2

2020-24 Nissan Frontier Intelli-Key PTS AT



CARTRIDGE INSTALLATION

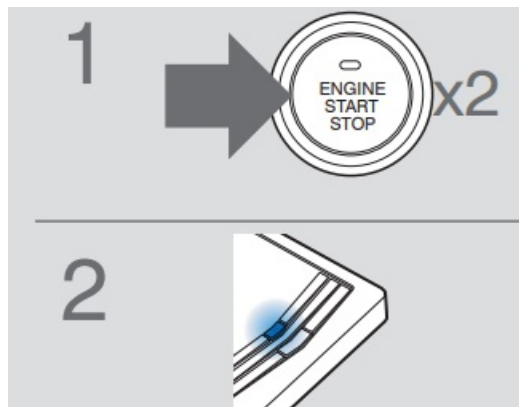
1. Slide cartridge into unit. Notice button under LED.



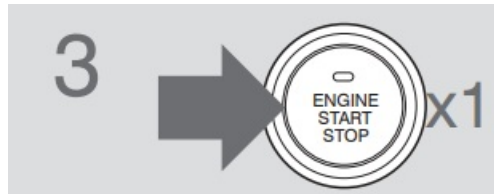
2. Ready for Module Programming Procedure.

MODULE PROGRAMMING PROCEDURE

1. Push start button twice [2x] to ON position.
2. Wait, LED will turn solid BLUE for 2 seconds.



3. Push start button once [1x] to OFF position.



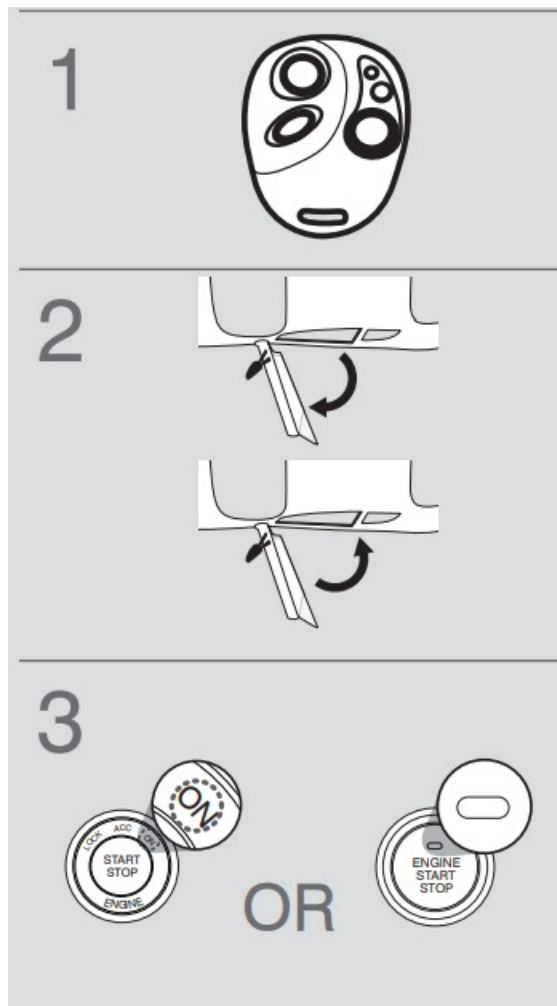
4. Module Programming Procedure completed.

PUSH TO START VEHICLE TAKE OVER PROCEDURE – TO THE VEHICLE OWNER

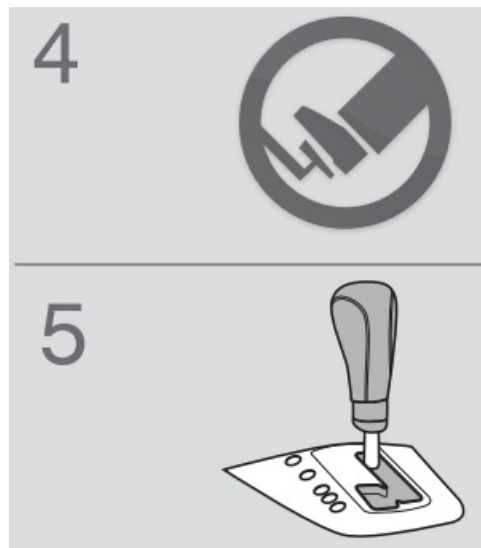
NOTE

- This procedure is to be followed during remote starter runtime prior to entering vehicle.
- All vehicle doors must be closed.

1. Press UNLOCK on after-market remote or OEM fob.
2. Open vehicle door.
Enter vehicle WITH THE OEM FOB.
Close vehicle door.
3. Wait for the LED indicator of the push button to be in the ON position.
OR
Wait for the ORANGE LED indicator of the push button to turn on.



4. Press and release BRAKE pedal.
5. It is safe to select gear ONLY AFTER LED indicator is in ON position.



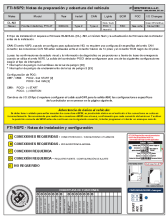
6. Push to Start vehicle take over procedure completed.

Failure to follow procedure may result in vehicle displaying CHECK ENGINE or TIRE PRESSURE error messages.

WWW.IDATALINK.COM

Automotive Data Solutions Inc. © 2020

Documents / Resources



[idatalink DL-NI3 Push To Start Vehicle](#) [pdf] Installation Guide
DL-NI3, CM900AS, DL-NI3 Push To Start Vehicle, DL-NI3, Push To Start Vehicle, Start Vehicle, Vehicle

References

- [ⓘ iDataLink - Home](#)
- [User Manual](#)

Manuals+, Privacy Policy

This website is an independent publication and is neither affiliated with nor endorsed by any of the trademark owners. The "Bluetooth®" word mark and logos are registered trademarks owned by Bluetooth SIG, Inc. The "Wi-Fi®" word mark and logos are registered trademarks owned by the Wi-Fi Alliance. Any use of these marks on this website does not imply any affiliation with or endorsement.