



# idataLINK ALCA 64K Multi Immobilizer Transponder Bypass Interface Module Installation Guide

[Home](#) » [idataLink](#) » [idataLINK ALCA 64K Multi Immobilizer Transponder Bypass Interface Module Installation Guide](#) 

## Contents

- [1 idataLINK ALCA 64K Multi Immobilizer Transponder Bypass Interface Module](#)
- [2 BEFORE INSTALLATION](#)
- [3 VEHICLE LIST – 1 OF 1](#)
- [4 BOX CONTENTS](#)
- [5 WIRING DIAGRAM – 1 OF 1](#)
- [6 MODULE PROGRAMMING PROCEDURE – STD KEY – 1 OF 1](#)
- [7 Documents / Resources](#)
  - [7.1 References](#)
- [8 Related Posts](#)



## idataLINK ALCA 64K Multi Immobilizer Transponder Bypass Interface Module



### TERMS OF USE:

Automotive Data Solutions Inc. ("ADS") products are strictly intended for installation by Certified Technicians who are employed by a registered business specialized in the installation of auto-motive aftermarket electronics products. Prior to beginning installation of an ADS product in a vehicle, it is the Certified Technician's responsibility to review the most current Product Guide, Install Guide and vehicle-specific notes available in Weblink®. ADS is not responsible for any damages whatsoever, including but not limited to any consequential damages, incidental damages, damages for loss of time, loss of earnings, loss of profit, commercial loss, loss of economic opportunity and the like that may or may not have resulted from the use, misuse, improper installation or operation of its products. ADS reserves itself the right to suspend any Weblink® account without notice and decline to offer technical support to non-Certified Technicians, non-compliant Certified Technicians or end users.

### BEFORE INSTALLATION

1. Connect module to computer
2. Login to Weblink account
3. Flash firmware to module (module is not preloaded with firmware)
4. Use accessories accordingly (accessories are sold separately)

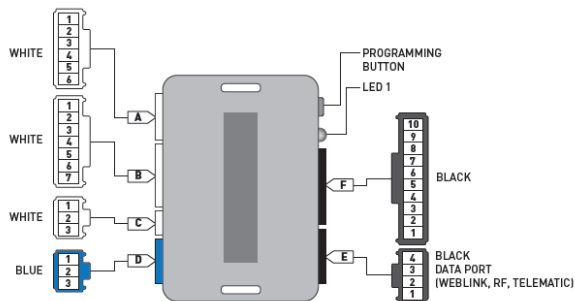
## VEHICLE LIST – 1 OF 1

MAKE	MODEL	YEAR	INSTALL TYPE	FEATURES									
				DATA IMMOBILIZER BYPASS	3X LOCK START/STANDALONE MOD.	PRIORITY UNLOCK	DOOR LOCK	DOOR UNLOCK	ARM OEM ALARM	DISARM OEM ALARM	TRUNK/HATCH RELEASE	DATA/MUX STARTER CTRL	RAP SHUTDOWN CTRL
CHRYSLER	200	11-14	2 or 3	*	*	*	*	*	*	*	*	*	*
	300 / 300C	05-07	1	*	*	*	*	*	*	*	*	*	*
	Aspen	07-10	2 or 3	*	*	*	*	*	*	*	*	*	*
	PT Cruiser	06-10	1	*	*	*	*	*	*	*	*	*	*
	Sebring	07-10	2 or 3	*	*	*	*	*	*	*	*	*	*
DODGE	Avenger	08-14	2 or 3	*	*	*	*	*	*	*	*	*	*
	Caliber (with start wire)	07	1	*	*	*	*	*	*	*	*	*	*
	Caliber	07-12	2 or 3	*	*	*	*	*	*	*	*	*	*
	Charger	06-07	1	*	*	*	*	*	*	*	*	*	*
	Durango	07-10	2 or 3	*	*	*	*	*	*	*	*	*	*
	Magnum	05-07	1	*	*	*	*	*	*	*	*	*	*
	Nitro	07-11	2 or 3	*	*	*	*	*	*	*	*	*	*
	Ram 1500	07-08	2 or 3	*	*	*	*	*	*	*	*	*	*
	Ram 2500	07-09	2 or 3	*	*	*	*	*	*	*	*	*	*
	Ram 3500	07-09	2 or 3	*	*	*	*	*	*	*	*	*	*
	Ram 3500 chassis cab	07-09	2 or 3	*	*	*	*	*	*	*	*	*	*
	Ram 4500 chassis cab	08-10	2 or 3	*	*	*	*	*	*	*	*	*	*
JEEP	Commander	06-07	1	*	*	*	*	*	*	*	*	*	*
	Compass	07-17	2 or 3	*	*	*	*	*	*	*	*	*	*
	Grand Cherokee	05-07	1	*	*	*	*	*	*	*	*	*	*
	Liberty	08-12	2 or 3	*	*	*	*	*	*	*	*	*	*
	Patriot	07-17	2 or 3	*	*	*	*	*	*	*	*	*	*
RAM	Wrangler JK STD Key AT	07-18	2 or 3	*	*	*	*	*	*	*	*	*	*
	4500 chassis cab	10	2 or 3	*	*	*	*	*	*	*	*	*	*
	5500 chassis cab	10	2 or 3	*	*	*	*	*	*	*	*	*	*

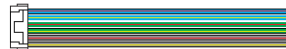
**WARNING**  
 I Install type 1 & 3 require a T-Harness (sold separately).  
 Install type 2 doesn't require a T-Harness.

## BOX CONTENTS

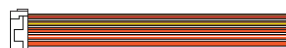
### MODULE



### 6 PIN WHITE CONNECTOR



### 7 PIN WHITE CONNECTOR



### 3 PIN WHITE CONNECTOR



### 3 PIN BLUE CONNECTOR



### 4 PIN BLACK CONNECTOR



### 10 PIN BLACK CONNECTOR



### DATA CABLE 1



### DATA CABLE 2



### WEBLINK CABLE (required accessory sold separately)



### CH5 T-HARNESS (optional accessory sold separately)



MAKE	MODEL	YEAR	WIRE DESCRIPTION	CONNECTOR NAME	CONNECTOR COLOR	CONNECTOR TYPE	POSITION	WIRE COLOR	POLARITY	MODULE LOCATION	COMPONENT LOCATOR
CHRYSLER	300	05-07	Mux	C1	Black	5 pin	2	Purple/Brown	(MUX)	Ignition switch	~
			Starter	C1	Black	5 pin	4	Pink/Dk Green	(+)	Ignition switch	~
	PT Cruiser	06-10	Mux	C1	Black	5 pin	2	Purple/Brown	(MUX)	Ignition switch	~
			Starter	C1	Black	5 pin	4	Pink/LtBlue	(+)	Ignition switch	~
DODGE	Caliber with start wire	07	Mux	C1	Black	5 pin	2	Purple/Brown	(MUX)	Ignition switch	~
			Starter	C1	Black	5 pin	4	Pink/Dk Green	(+)	Ignition switch	~
	Charger	06-07	Mux	C1	Black	5 pin	2	Purple/Brown	(MUX)	Ignition switch	~
			Starter	C1	Black	5 pin	4	Pink/Dk Green	(+)	Ignition switch	~
	Magnum	05-07	Mux	C1	Black	5 pin	2	Purple/Brown	(MUX)	Ignition switch	~
			Starter	C1	Black	5 pin	4	Pink/Dk Green	(+)	Ignition switch	~
JEEP	Commander	06-07	Mux	C1	Black	5 pin	2	Purple/Brown	(MUX)	Ignition switch	~
			Starter	C1	Black	5 pin	4	Pink/Orange	(+)	Ignition switch	~
	Grand Cherokee	05-07	Mux	C1	Black	5 pin	2	Purple/Brown	(MUX)	Ignition switch	~
			Starter	C1	Black	5 pin	4	Pink/Orange	(+)	Ignition switch	~



L E R	Aspen	-1 0	Mux	~	~	8 pin	1	Purple/Brown	(M UX )	Ignition switch	~
			Ignition	~	~	8 pin	3	Pink/Gray	(+)	Ignition switch	~
			12V	~	~	8 pin	5	Red	(+)	Ignition switch	~
	Sebring	07 -1 0	CanH	~	~	8 pin	6	White/Orange	(D AT A)	Ignition switch	~
			CanL	~	~	8 pin	7	White	(D AT A)	Ignition switch	~
			Mux	~	~	8 pin	1	Purple/Brown	(M UX )	Ignition switch	~
			Ignition	~	~	8 pin	3	Pink	(+)	Ignition switch	~
			12V	~	~	8 pin	5	Red	(+)	Ignition switch	~
D O D G E	Avenger	08 -1 4	CanH	~	~	8 pin	6	White/Orange	(D AT A)	Ignition switch	~
			CanL	~	~	8 pin	7	White	(D AT A)	Ignition switch	~
			Mux	~	~	8 pin	1	Purple/Brown	(M UX )	Ignition switch	~
			Ignition	~	~	8 pin	3	Pink	(+)	Ignition switch	~
			12V	~	~	8 pin	5	Red	(+)	Ignition switch	~
	Caliber	07 -1 2	CanH	~	~	8 pin	6	White/Orange	(D AT A)	Ignition switch	~
			CanL	~	~	8 pin	7	White/Pink	(D AT A)	Ignition switch	~
			Mux	~	~	8 pin	1	Purple/Brown	(M UX )	Ignition switch	~
			Ignition	~	~	8 pin	3	Pink/White	(+)	Ignition switch	~
			12V	~	~	8 pin	5	Red/LtBlue	(+)	Ignition switch	~
			CanH	~	~	8 pin	6	White/Orange	(D AT A)	Ignition switch	~
			CanL	~	~	8 pin	7	White/LtBlue	(D AT A)	Ignition switch	~

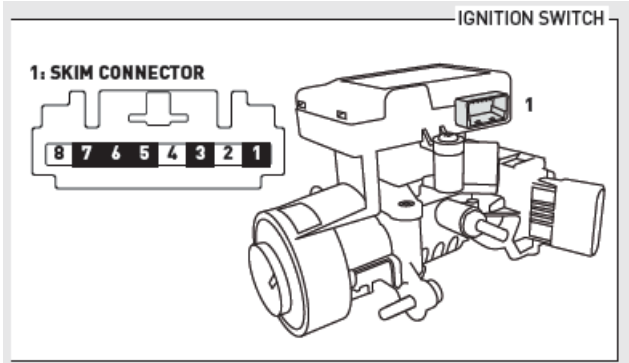
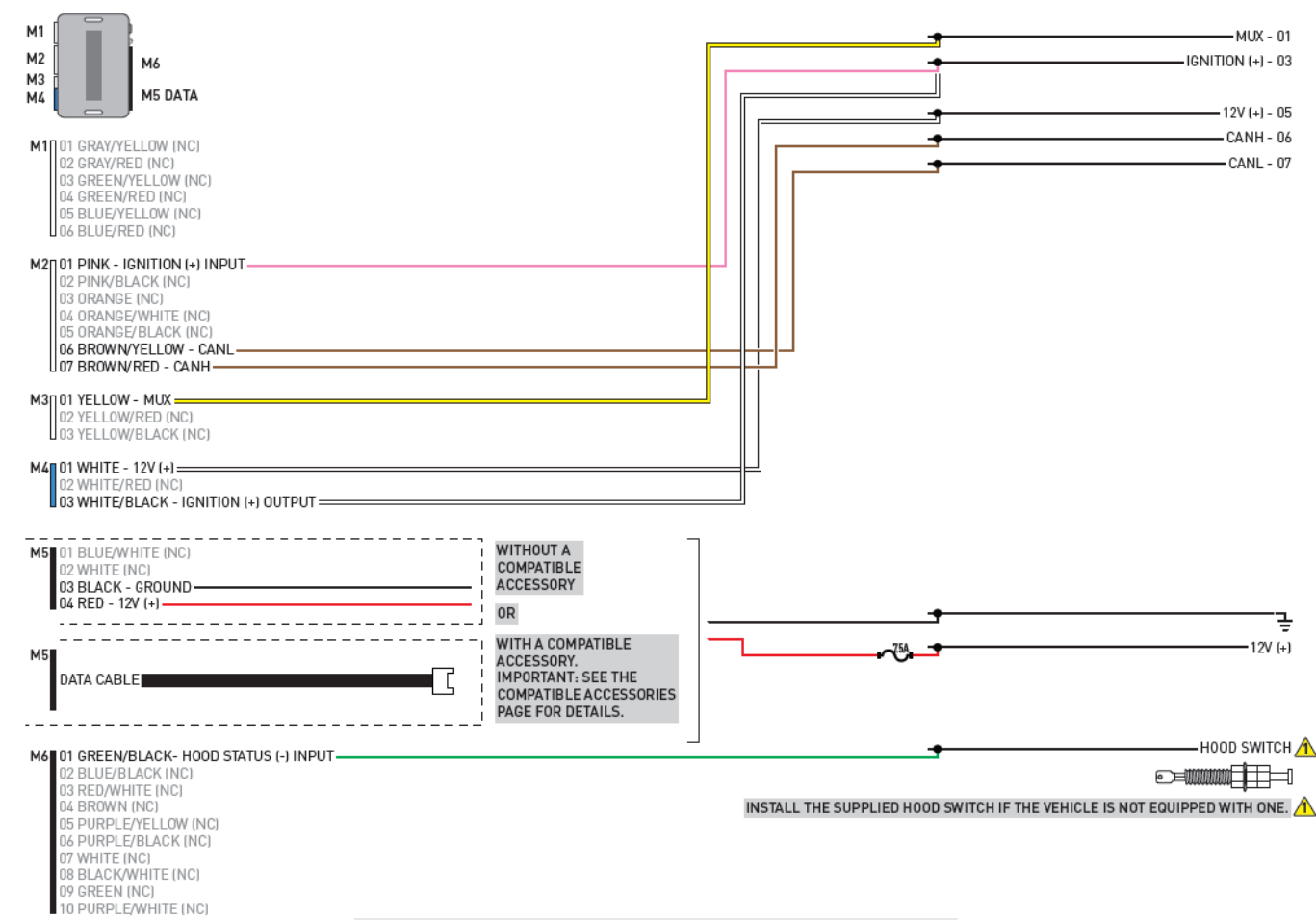
	Durango	07-10									
			Mux	~	~	8 pin	1	Purple/Brown	(MUX)	Ignition switch	~
			Ignition	~	~	8 pin	3	Pink/Gray	(+)	Ignition switch	~
			12V	~	~	8 pin	5	Red	(+)	Ignition switch	~
	Nitro	07-11	CanH	~	~	8 pin	6	White/LtGreen	(DATA)	Ignition switch	~
			CanL	~	~	8 pin	7	White	(DATA)	Ignition switch	~
			Mux	~	~	8 pin	1	Purple/Brown	(MUX)	Ignition switch	~
			Ignition	~	~	8 pin	3	Pink/White	(+)	Ignition switch	~
			12V	~	~	8 pin	5	Red	(+)	Ignition switch	~

MAKE	MODEL	YEAR	WIRE DESCRIPTION	CONNECTOR NAME	CONNECTOR COLOR	CONNECTOR TYPE	POSITION	WIRE COLOR	POLARITY	MODULE LOCATION	COMPONENT LOCATOR
DODGE	Ram Pickup	07-10	CanH	~	~	8 pin	6	White/Orange	(DATA)	Ignition switch	~
			CanL	~	~	8 pin	7	White	(DATA)	Ignition switch	~
			Mux	~	~	8 pin	1	Purple/Brown	(MUX)	Ignition switch	~
			Ignition	~	~	8 pin	3	Pink/White	(+)	Ignition switch	~
			12V	~	~	8 pin	5	Gray/Red	(+)	Ignition switch	~
			CanH	~	~	8 pin	6	White/Orange	(DATA)	Ignition switch	~
			CanL	~	~	8 pin	7	White/Pink	(DATA)	Ignition switch	~

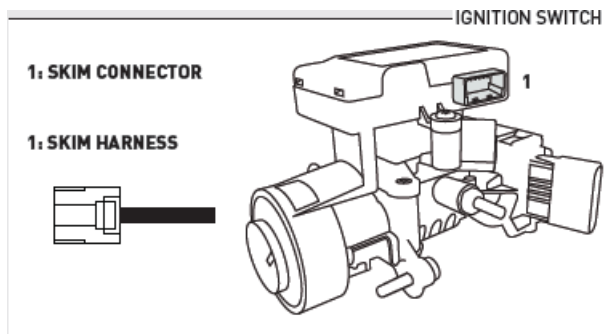
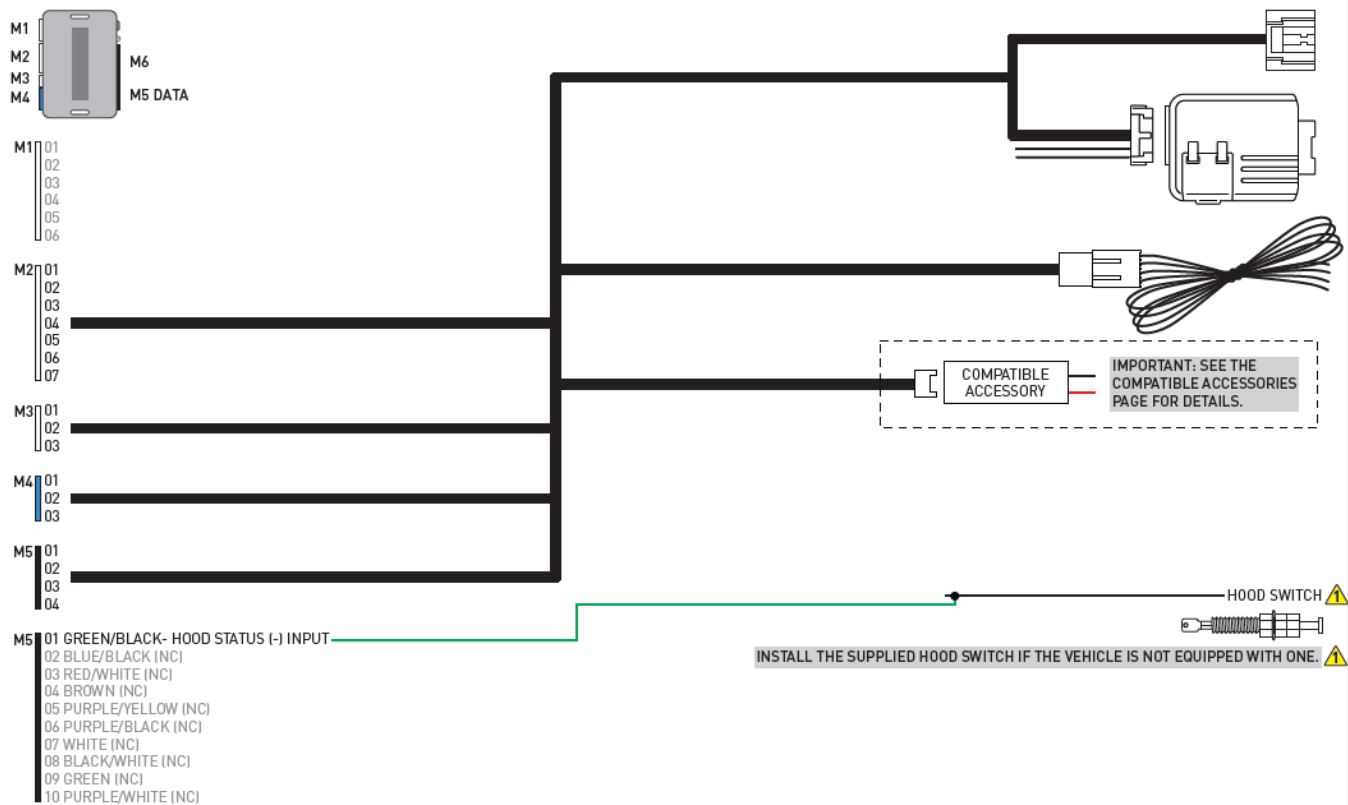
J E E P	Compass	07 -1 7	Mux	~	~	8 pin	1	Purple/Brown	(M UX )	Ignition switch	~
			Ignition	~	~	8 pin	3	Pink/White	(+)	Ignition switch	~
			12V	~	~	8 pin	5	Red/LtGreen	(+)	Ignition switch	~
	Liberty	08 -1 2	CanH	~	~	8 pin	6	White/Black	(D AT A)	Ignition switch	~
			CanL	~	~	8 pin	7	White/Blue	(D AT A)	Ignition switch	~
			Mux	~	~	8 pin	1	Purple/Brown	(M UX )	Ignition switch	~
			Ignition	~	~	8 pin	3	Pink/White	(+)	Ignition switch	~
			12V	~	~	8 pin	5	Red	(+)	Ignition switch	~
	Patriot	07 -1 7	CanH	~	~	8 pin	6	White/Orange	(D AT A)	Ignition switch	~
			CanL	~	~	8 pin	7	White/Pink	(D AT A)	Ignition switch	~
			Mux	~	~	8 pin	1	Purple/Brown	(M UX )	Ignition switch	~
			Ignition	~	~	8 pin	3	Pink/White	(+)	Ignition switch	~
			12V	~	~	8 pin	5	Red/LtGreen	(+)	Ignition switch	~
	Wrangler JK STD Key AT	07 -1 8	CanH	~	~	8 pin	6	White/Black	(D AT A)	Ignition switch	~
			CanL	~	~	8 pin	7	White/LtBlue	(D AT A)	Ignition switch	~
			Mux	~	~	8 pin	1	Purple/Brown	(M UX )	Ignition switch	~
			Ignition	~	~	8 pin	3	Pink/White	(+)	Ignition switch	~
			12V	~	~	8 pin	5	Red	(+)	Ignition switch	~
			CanH	~	~	8 pin	6	White/Orange	(D AT A)	Ignition switch	~



R A M	Pickup	10	CanL	~	~	8 pin	7	White	(D AT A)	Ignition switch	~
			Mux	~	~	8 pin	1	Purple/Brown	(M UX )	Ignition switch	~
			Ignition	~	~	8 pin	3	Pink/White	(+)	Ignition switch	~
			12V	~	~	8 pin	5	Gray/Red	(+)	Ignition switch	~



## WIRING DIAGRAM – 1 OF 1



## MODULE PROGRAMMING PROCEDURE – STD KEY – 1 OF 1

1. Close driver door.



2. Re-open driver door to wake up data bus.



3. Insert key into ignition.



4. Turn key to ON position.



5. LED will turn solid RED.



6. Within 5 seconds, LED will flash GREEN rapidly.



7. Turn key to OFF position.



8. Remove key.



9. Press UNLOCK on the OEM remote. If vehicle is not equipped with OEM remote, press module programming button.



10. Wait, LED will turn solid GREEN for 2 seconds.



11. Module Programming Procedure completed.



**NOTE:**

In Valet Mode, the Remote starter is not functional. Keyless entry, Lock and Unlock will remain functional. See RF kit user manual for alternate valet mode programming.



1. Time restrictions. Complete next step within 7 seconds.



2. Cycle ignition ON five times [5x OFF/ON] rapidly.



3. Wait, LED 1 will turn solid RED for 2 seconds.



4. Set ignition to OFF position.



5. Valet Mode Programming Procedure completed.



6. To exit valet mode: repeat steps 1 to 5.



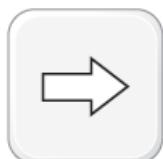
It is mandatory to exit the Module Navigation at the end of this procedure. Failure to exit the Module Navigation will drain vehicle battery. To exit the Module Navigation at any time: Follow STEP 13.



Module must be programmed to the vehicle.



Use the Module Navigation Chart on the next page.



1. Set ignition to OFF position.



2. TO ACCESS THE MENUS: Press and hold the programming button until LED 1 turns solid GREEN.



3. IN THE MENUS: Press the programming button as many times as the menu number indicates. LED 1 will flash GREEN an equal amount of times continuously.



4. TO ACCESS THE OPTIONS: Press and hold programming button until LED 1 turns solid RED.



5. IN THE OPTIONS: Press the programming button as many times as the option number indicates. LED 1 will flash RED an equal amount of times continuously.



6. TO ACCESS THE SETTINGS: Press and hold programming button until LED 1 turns solid GREEN.



7. LED 1 will flash GREEN as many times as the current (or default) setting number, continuously.



8. IN THE SETTINGS: Press the programming button as many times as necessary to access your setting. LED 1

will flash GREEN an equal amount of times continuously.



9. To return to the MENUS: exit the Module Navigation and redo the Module Navigation Procedure.



10. To save and return to the OPTIONS: Press and hold programming button until LED 1 turns solid RED.



11. LED 1 will flash RED as many times as the current option number continuously.



12. Configure every other setting and proceed to step 13.



13. MANDATORY: EXIT MODULE NAVIGATION. Press and hold the programming button for 7 seconds. LED 1 will flash RED rapidly. Release programming button. LED 1 will turn OFF.



14. Module navigation completed.



15. Failure to exit the Module Navigation will drain vehicle battery.



MODULE NAVIGATION CHARACTERISTICS: NOTES	[X] MENUS		[Y] OPTIONS		[Z] SETTINGS	
<p>I Default settings are listed in bold.</p> <p>II Make sure the option is covered on the vehicle before attempting to change the setting.</p>	01	CONFIGURATION	01	DISARM/UNLOCK BEFORE START	01	<b>OFF</b>
					02	ON
			02	RELOCK AFTER START	01	<b>OFF</b>
					02	ON
			03	RELOCK AFTER SHUTDOWN	01	<b>OFF</b>
					02	ON
			04	FORCE UNLOCK ALL ON FIRST PRESS	01	<b>OFF</b>
					02	ON
			05	TAKEOVER	01	<b>ENABLE</b>
					02	DISABLE*
			06	SECURE TAKEOVER DELAY	01	<b>45 SEC</b>
					02	90 SEC
					03	03 MIN
					04	04 MIN
			07	FACTORY KEYLESS RS SEQUENCE	01	DISABLE
					02	N/A
					03	LOCK + UNLOCK + LOCK
					04	<b>LOCK + LOCK + LOCK</b>
			08	MODULE RUN TIME	01	03 MIN
					02	05 MIN
					03	10 MIN
					04	15 MIN
					05	25 MIN
					06	30 MIN

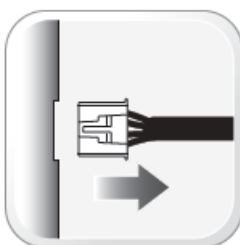


					07	35 MIN
					08	15 MIN
					01	02 SEC
					02	05 SEC
					03	08 SEC
					04	10 SEC
					05	15 SEC
					06	20 SEC
					07	25 SEC
					08	30 SEC
					10-12	N/A
					01	N/A
					01	N/A
					01	N/A

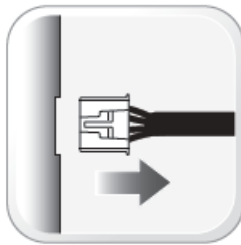
REMOTE STARTER ERROR CODES: NOTES	[X] NUMBER OF PARKING LIGHT FLASHES	DIAGNOSTIC
<p>I WARNING: The following applies only when the parking lights are connected and supported by the system.</p> <p>II After a remote starter failure, the parking lights will flash</p> <p>[X] number times to indicate an error code. See table.</p>	03	Foot brake is ON.
	04	Hood is open.
	05	Engine tach signal is lost.
	06	System is in Valet Mode.
	07	Vehicle is moving (VSS).
	08	Glow plug timeout error.

TEST MODULE		LED 1 STATUS	DIAGNOSTIC
I	DURING PROGRAMMING	Flashing RED	Missing/wrong information from firmware or vehicle.
		Solid RED	Module waiting for more vehicle information.
		Flashing GREEN	Additional steps required to complete module programming.
		Solid GREEN then OFF	Module correctly programmed.
		OFF	No activity or module already programmed.
I I	DURING REMOTE START	Flashing RED	Module incorrectly programmed.
		Solid RED	Module incorrectly programmed.
		Flashing GREEN	Module correctly programmed and operational.
		Solid GREEN then OFF	Reset in progress.
		OFF	Invalid ground when running status from remote starter.
I I I	WITH IGNITION OFF	Flashing RED	Module incorrectly programmed or connected.
		Solid RED	Module not programmed. Waiting for more vehicle information.
		Flashing GREEN	False ground when running status from remote starter.
		Solid GREEN then OFF	Reset in progress.
		OFF	Module at rest and ready for a remote start sequence.

1. Disconnect all connectors from module except the BLACK 4-PIN connector.



2. Disconnect the BLACK 4-PIN connector.



3. PRESS AND HOLD programming button while connecting the BLACK 4-PIN connector.



4. Wait, LED 1 will flash RED. RELEASE programming button.



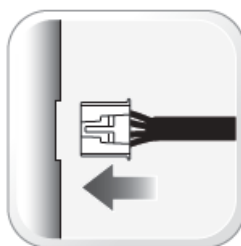
5. LED 1 will turn RED for 2 seconds.



6. Module RESET completed.



7. Reconnect all connectors.



8. Repeat programming procedure.



9. Failure to follow procedure may result with a DTC or a CHECK ENGINE error message.



10. All vehicle doors must be closed and locked prior to remote start sequence.



11. Press unlock on OEM or aftermarket remote.



12. Insert key into ignition.



13. Turn key to ON position.



14. Press and release BRAKE pedal.



15. Take over procedure completed.




16. Failure to follow procedure will result in vehicle engine shutdown.



CHECKLIST	
1	WARNING: Vehicle engine will start many times. Test in a well ventilated area.
2	Close all vehicle doors, hood and trunk.
3	Press LOCK button three times [3x] rapidly on the OEM keyfob to remote start vehicle.
	<b>Question 1:</b> Does the vehicle remote start?
..	YES: Go to next step.
..	NO: The module doesn't detect OEM remote lock button from the vehicle communication network. Check all connections, repeat the test and call technical support, if the problem persists.
4	Press LOCK button three times [3x] rapidly on the OEM keyfob to shut down vehicle.
	<b>Question 2:</b> Does the vehicle shut down?
..	YES: Go to next step.
..	NO: Repeat step. If the problem persists, press on the brake pedal once [1x] to shut down the vehicle and call technical support.
5	RAP Shutdown test
	<b>Question 3:</b> Did the radio, interior controls, and headlights turn off within 60 seconds after remote start shutdown?
..	YES: Go to next step.
..	NO: Verify the RAP SHUTDOWN connections as illustrated in the wiring diagram. Repeat the test and call technical support, if the problem persists.
6	Open hood.
7	If not already installed, affix the mandatory orange warning sticker under the hood and proceed to next step.
8	Press LOCK button three times [3x] rapidly on the OEM keyfob to remote start vehicle.
	<b>Question 4:</b> Does the vehicle remote start?
..	YES: The vehicle is not equipped with a factory hood pin. Install a mandatory aftermarket hood switch, then repeat the test.
..	

	NO: Go to next step.
9	Close hood.
10	Enter vehicle and close the doors.
11	Press LOCK button three times [3x] rapidly on the OEM keyfob to remote start vehicle.
12	Wait for the vehicle to start.
13	Press brake pedal.
	<b>Question 5:</b> Does the vehicle shut down?
..	YES: Go to next step.
..	NO: The module does NOT detect the brake pedal signal. Press LOCK button three times [3x] rapidly on the OEM keyfob to shut down, check the brake connection as illustrated in the wiring diagram, if applicable, and call technical support.
14	Exit vehicle.
15	Installation checklist completed.

## Documents / Resources

	<a href="#">idataLINK ALCA 64K Multi Immobilizer Transponder Bypass Interface Module</a> [pdf] Installation Guide ALCA 64K, Multi Immobilizer Transponder Bypass Interface Module
--	--

## References

- [iDataLink - Home](#)