



iDance K2v2 Wireless Sound and Light Party System nUser Manual

[Home](#) » [iDance](#) » iDance K2v2 Wireless Sound and Light Party System nUser Manual 

Contents

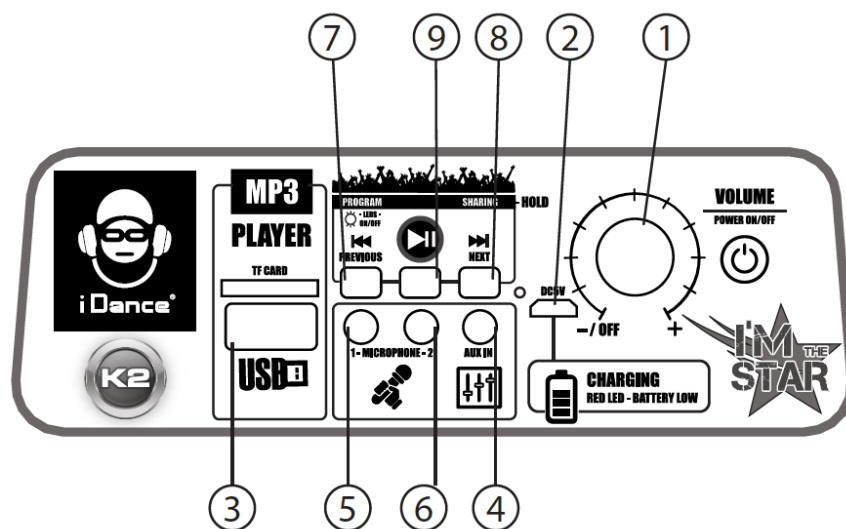
- [1 iDance K2v2 Wireless Sound and Light Party System](#)
- [2 overview](#)
- [3 IMPORTANT SAFETY INSTRUCTIONS](#)
- [4 Specifications](#)
- [5 PANEL DESCRIPTION](#)
- [6 BLUETOOTH CONNECTION](#)
- [7 Trouble Shooting](#)
- [8 Documents / Resources](#)
 - [8.1 References](#)
- [9 Related Posts](#)



iDance K2v2 Wireless Sound and Light Party System



overview



What is included in the Box

- 1x Bluetooth Speaker
I'M THE STAR K2
- 1x Wired Microphone
included
- 1x AUX-IN audio cable
- 1x USB Cable
- 1x User Manual

Thanks for your Purchase of iDance I'M THE STAR K2, Please read the manual with attention before use

This product meets the essential requirements of Directive 2014/53/EU.

This product complies with the requirements of the Europe

Manufactured by iDance

<http://www.idanceintl.com>

WARNING

WARNING: TO REDUCE THE RISK OF FIRE OR SHOCK, DO NOT EXPOSE THIS PRODUCT TO RAIN OR MOISTURE

CAUTION: TO REDUCE THE RISK OF FIRE OR SHOCK, DO NOT REMOVE THE COVER OR BACK. NO USER-SERVICEABLE PARTS INSIDE. REFER SERVICING TO QUALIFIED PERSONNEL

The lightning flash with an arrowhead symbol inside an equilateral triangle is intended to alert the user of the presence of an un-insulated "hazardous voltage Within the product' S enclosure, which may be of sufficient magnitude to induce a risk of electric shock to persons.

The exclamation mark inside an equilateral triangle is intended to alert the user of the presence of the important operating and maintenance (servicing) instructions in the literature accompanying the product.

NOTE: Please do not attempt to open the back cover or power adapter as opening or removing the covers may expose you to dangerous voltage or other hazards, and it will also cause the restricted servicing to be disabled: There are no users servicing components inside.

NOTE: This digital apparatus does not exceed the ClassB limits for radio noise emissions from digital apparatus as set out in the Radio Interference Regulations of Industry Canada. these limits are designed to provide reasonable protection against harmful interference in a residential installation.

NOTE:

- Reorient or relocate the receiving antenna.
- Increase the separation between the equipment and the receiver.
- Connect the equipment into an outlet on a circuit different from that to which the receiver is connected
- Consult the dealer or an experienced radio/TV technician for assistance.

IMPORTANT SAFETY INSTRUCTIONS

- Read these instructions.
- Keep these instructions. Heed all warnings.
- Follow all instructions.
- Do not use this apparatus near water.
- Clean only with dry cloth.
- Do not block any ventilation openings.
- Install in accordance with the manufacturer's instructions.
- Do not install near any heat sources Such as radiators, heat registers, stoves, or other apparatus (including amplifiers) that produce heat.
- Do not defeat the Safety of the polarized or grounding-type plug. A polarized plug has two blades with one wider than the other, A grounding type plug has two blades and a third grounding prong. The wide blade or the third prong is provided for your safety. If the provided plug does not fit into your outlet, consult an electrician for

replacement of the obsolete outlet

- Protect the power cord from being walked on or pinched particularly at plugs, convenience receptacles, and the point where they exit from the apparatus.
- Only use attachments/accessories specified by the manufacturer.
- Use only With the cart, stand, tripod, bracket, or table specified by the manufacturer, or sold with the apparatus. when a cart is used, use caution when moving the cart/apparatus combination to avoid injury from tip-over. Portable Cart Warning
- Unplug this apparatus during lightning storms or when unused for long periods of time.
- Refer all servicing to qualified service personnel. Servicing is required when the apparatus has been damaged in any way such as power-supply cord or plug is damaged, liquid has been spilled or objects have fallen into the apparatus, the apparatus has been exposed to rain or moisture does not operate normally, or has been dropped.
- The apparatus shall not be exposed to dripping or splashing and no objects filled With liquids, such as vases, shall be placed on the apparatus.
- The battery shall not be exposed to excessive heat such as sunshine, fire, or the like.
- The MAINS plugs are used as the disconnect device, which shall remain readily operable.

Specifications

- Speaker size
- Musical Max Power
- RMS POver
- Power Input
- Speaker +Tweeter
- Impedance
- S/N Ratio
- Frequency
- Battery Type
- Output (V.A)
- Battery weight
- Charging Time
- Playing Time
- Bluetooth Version
- Bluetooth Frequency
- Input
- Battery Capacity
- Transmission
- Distance
- Product Dimensions
- Product Weight

PANEL DESCRIPTION

1. Power Switch

2. MASTER Volume Control
3. USB Charging Dock- Dc5V, connect to your mobile phone charger (not included)
4. there is a red led on the Power switch's button, which will indicate the battery status.
5. Red Led is on when the unit is low battery and charging
6. Red led is OFF when the unit is fully charged
7. USB port- Read MP3 files up to 32G capacity (FAT32) when USB MP3 is playing, that will automatically disconnect the Bluetooth, you will have to free the usb port.
8. AUX IN-Audio input to connect your external source

Audio Mixer Function

AUX IN+MICROPHONE+BLUETOOTH/USB MP3 will play together

9. MIC input 3.5mm Jack input to connect your dynamic microphone
10. Power on/off the disco lighting in the woofer
11. PREV go to the previous song
12. PROGRAM button: Bluetooth, AUX-IN, USB MP3 Player
13. Press to select your different audio sources
14. SHARING mode – Press to Play/Pause press the button for 3 seconds to access to SHARING MODE: The same smart Device can play to 2 of the same speaker using the Bluetooth
15. NEXT- go to the next song Play/Pause the current song of a Bluetooth device or USB Mp3 player

BLUETOOTH CONNECTION

The Bluetooth's pairing name is: "iDance K2"

If your device cannot search for "iDance K2", please ensure that the speaker is in Bluetooth mode. If still have Bluetooth connection problems, please switch off both Bluetooth device and Bluetooth speaker. Then start again, to scan for a Bluetooth device.

If you want to convert the other device to Bluetooth, please disconnect the playing device from the Bluetooth speaker (disconnect tone "beep" sound), and then connect the next device

To Disconnect the Bluetooth mode, you must disconnect the bluetooth pairing on the current used smart device

SHARING mode

SHARING mode, Same Audio Source to 2x iDance Speakers (same item number

Turn on the 2 units together at the same time

Then, connect one of them to your Bluetooth smart device, and you will be able to play the same smart device to 2x K2 in wireless mode.

The unit is designed to play MP3 and WAV audio files contained in a USB key. If the files are not in MP3 or WAV format, the files cannot be read successfully.

Design and specifications are subject to change without notice

I-Dance is a registered trademark in Europe and other entries

All other product or company names are trademarks or registered trademarks of their respective owners.

Copyrights iDance International Limited, all rights reserved

Trouble Shooting

- The unit is not Starting the sound is distorted
- Charge it for a least 4 hours the audio sound is cutting from your Bluetooth unpair and repair your smart device
- USB/TF card is not playing check if you only have audio files on this mass storage device

- Unplug USB/TF cards, and replug them if the problem still persists, refer to an appointed service agent, and
- DO NOT OPEN the speaker cover Microphone or guitars are not playing
- Check the volume or the connexion, be sure your microphone is Powered on if the unit is not starting, fully charge for 6 hours, using the included power supply adaptor

USB MP3 Player


Insert MP3 music files into USB and plug in the USB port, the machine will play the music files automatically. The unit is designed to play MP3 and WAV audio files contained in a USB key. If the files are not in MP3 or WAV format, the files cannot be read successfully.

The undersigned, iDance co declares that the radio equipment of the I'M THE STAR K2 type complies with the 2014/53/EU directive. the complete text is available at www.idanceintl.com

Made in China

When this crossed-out wheeled bin symbol is attached to a product it means that the product is covered by the European Directive 2002/96/EC. Please inform yourself about the local separate collection system for electrical and electronic products. Please act according to your local rules and do not dispose of your old products with your normal household waste. Correct disposal of your old product helps to prevent potential negative consequences for the environment and human health.

Documents / Resources

	iDance K2v2 Wireless Sound and Light Party System [pdf] User Manual K2v2, Wireless Sound and Light Party System, K2v2 Wireless Sound and Light Party System
---	--

References

-  [Bluetooth: Genius ideas](#)
-  [Home | iDance](#)