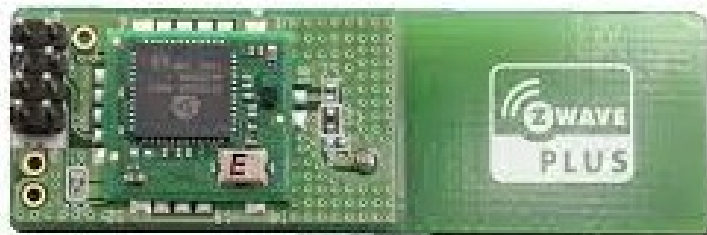




ID Lock Z-Wave Module Firmware Update Instruction Manual

[Home](#) » [ID Lock](#) » ID Lock Z-Wave Module Firmware Update Instruction Manual 

ID Lock Z-Wave Module Firmware Update Instruction Manual



Contents

- [1 Prerequisites](#)
- [2 Access to software](#)
- [3 How to update your device:](#)
- [4 Copyright](#)
- [5 Documents / Resources](#)
- [6 Related Posts](#)

Prerequisites

To upgrade your Z-Wave module you need the following:

1. An ID Lock electronic door lock
2. An ID Lock Z-Wave module
3. ID Lock Z-Wave firmware file (hex-file)
4. Silicon Labs Simplicity Studio and Z-Wave PC Controller (registration required to download developer tool)

5. Z-Wave UZB controller (i.e. Aeontec Gen5 UZB)
6. A computer running Windows 10 with at least 1 USB port

To update the Z-Wave module it must be excluded from your existing Z-Wave network. Please refer to the Z-Wave manual on idlock.no/kundesenter and your Z-Wave controller guide for details on how to exclude a door lock from your network.

Before inclusion we recommend you replace your batteries with 8 new LR06 batteries to ensure nothing goes wrong during the OTA (Over The Air) upgrade.

The Z-Wave firmware hex-file is available on idlock.no/kundesenter. Look for them in the Z-Wave section on the right side.

WARNING!

Updating the Z-Wave Module is at own risk and without any warranties. ID Lock is not responsible for any faults that may occur during the update process.

Access to software

The PC Controller software required for OTA can be accessed from the Silicon labs Simplicity studio.

To download and use the software a Silicon Labs account is needed. To make it easier later we will start by making an silicon labs account.

Note that administrator access on the PC is required to install simplicity studio.

1. Go to Silicon Labs webpages www.silabs.com.
2. Select the “person”-symbol and “register account” as shown below. Follow the steps provided. (If you already have an silicon labs account log in instead)



3. To download the Simplicity Studio enter Silicon Labs webpages again, www.silabs.com. Select “Products” -> “Wireless” -> “Simplicity Studio & Other Software” (marked yellow)



4. Scroll down and select “Explore Studio”



5. Scroll down, select simplicity studio version 5 and press the Windows installer button to download Simplicity

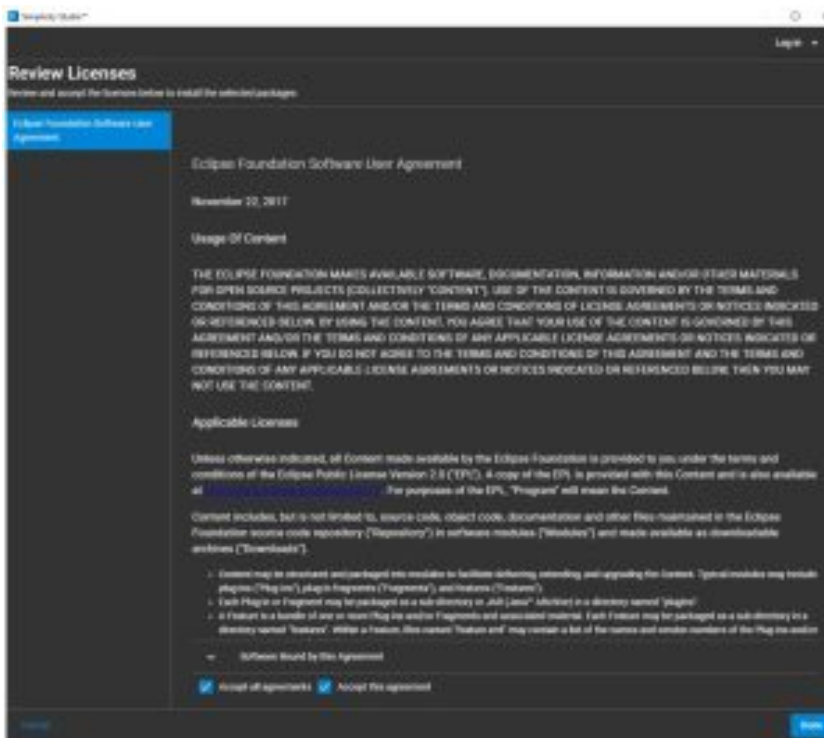
Studio 5. You need to login to Simplicity Studio to download the software.



6. After downloading, open the file. A new window with the following should appear. Choose Setup and follow the installation procedure.

This PC > DVD Drive (E:) SimplicityStudio-5				
Name	Date modified	Type	Size	
0x0409	21.03.2016 20:04	Configuration sett...	22 KB	
autorun	09.12.2020 21:49	Setup information	1 KB	
data1	09.12.2020 21:49	Cabinet File	870 KB	
data1.hdr	09.12.2020 21:49	HDR File	760 KB	
data2	09.12.2020 21:49	Cabinet File	473 285 KB	
ISSetup.all	29.09.2018 13:15	Application exten...	1 583 KB	
layout	09.12.2020 21:49	BIN File	1 KB	
setup	09.12.2020 21:47	BMP File	484 KB	
setup.dat	09.12.2020 21:49	DAT File	1 191 KB	
setup	09.12.2020 21:49	Application	179 KB	
setup	09.12.2020 21:49	Configuration sett...	3 KB	
setup.ini	09.12.2020 21:48	INI File	270 KB	

7. After installation, start Simplicity Studio. When started the following box should appear. Accept all and press done.



8. The following should then appear. Login with your silicon labs account.



9. After login the program requires some time while downloading drivers and setting up.

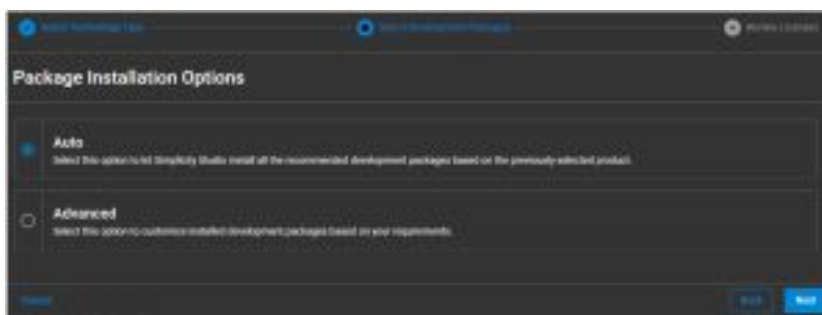
10. Installation manager will then appear. Choose the “install by technology type” button.



11. Chose Z-Wave from the list and press next



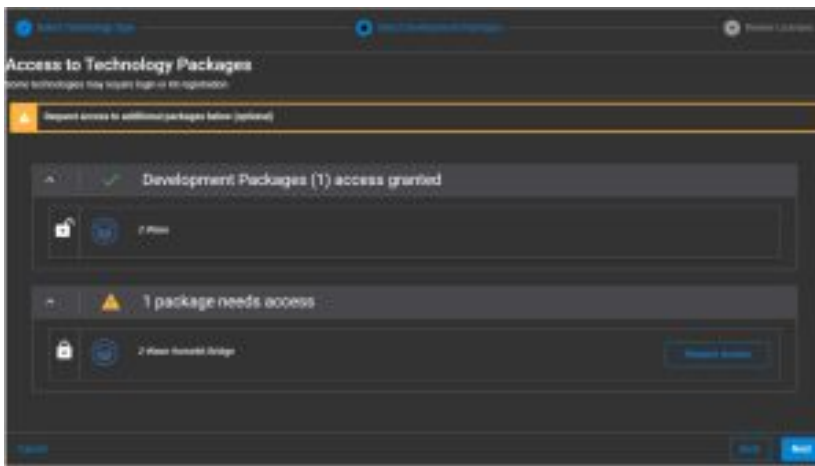
12. Chose "Auto" and press next



13. A warning for missing packages might appear.

It is important that you have access to the Z-Wave Developer pack. The "Z-Wave Homekit Bridge" pack is not required.

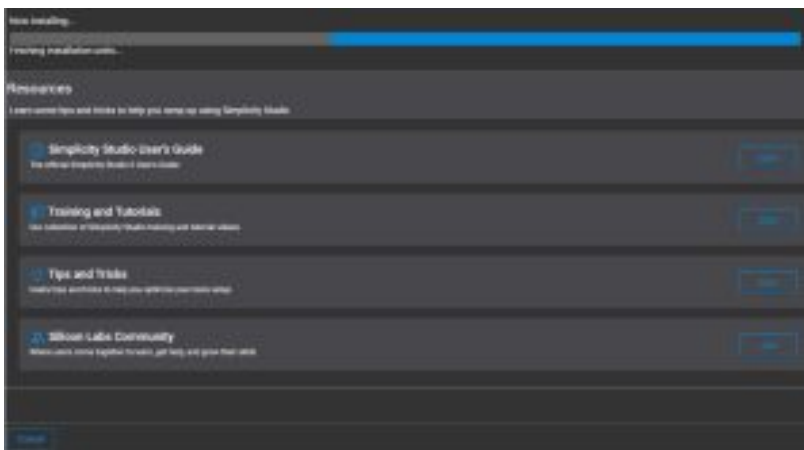
Press "next" if this is ok.



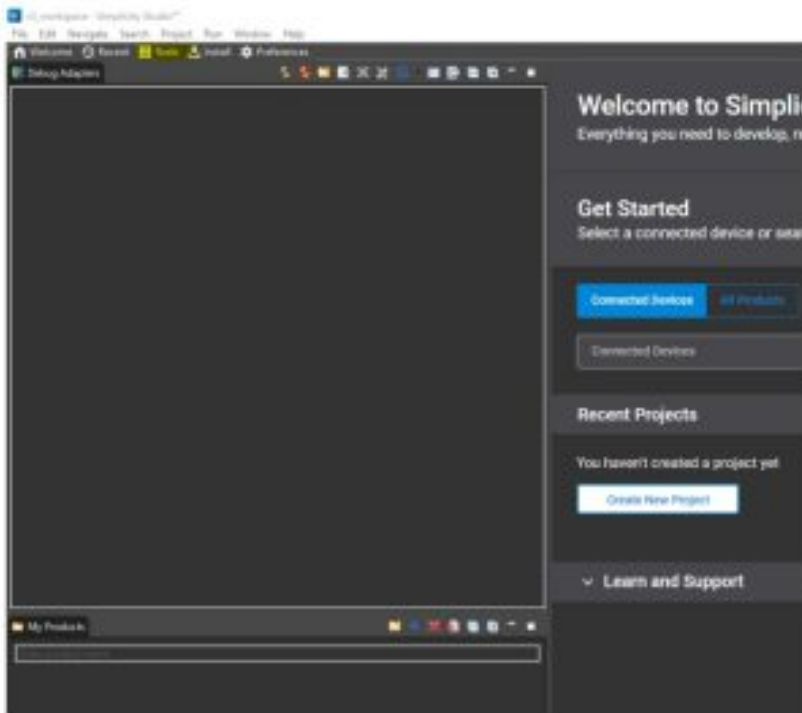
14. “Accept all agreements” and press next



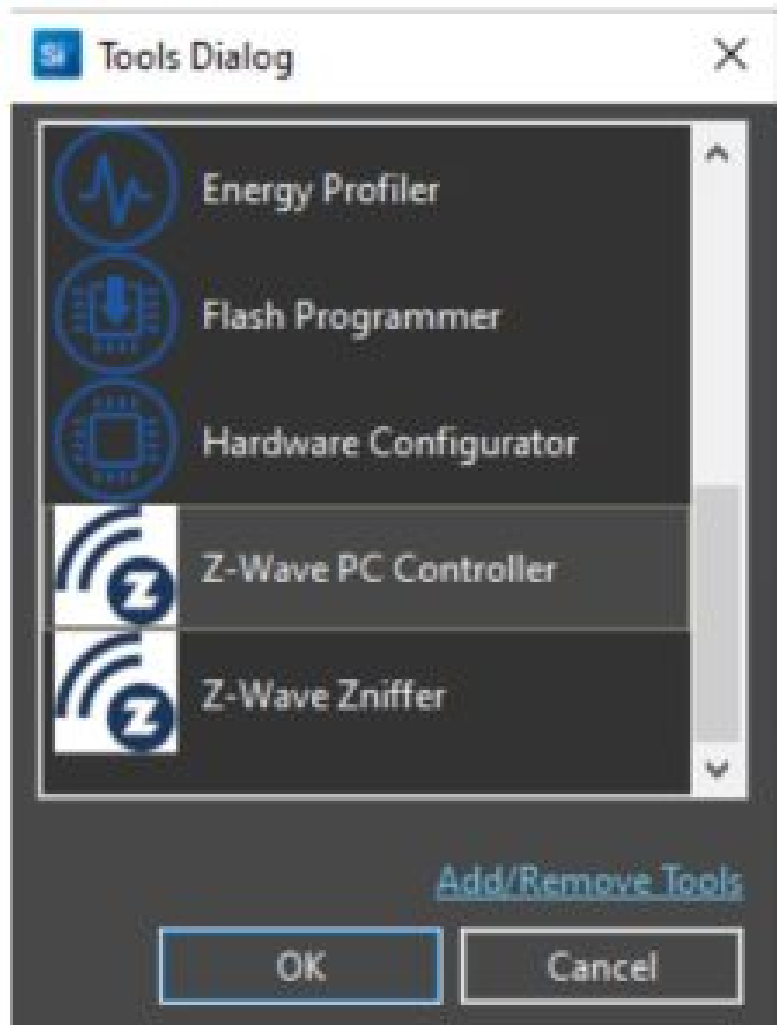
15. The Z-Wave packages required will now be installed. Please wait. After the installation is done the program will restart.



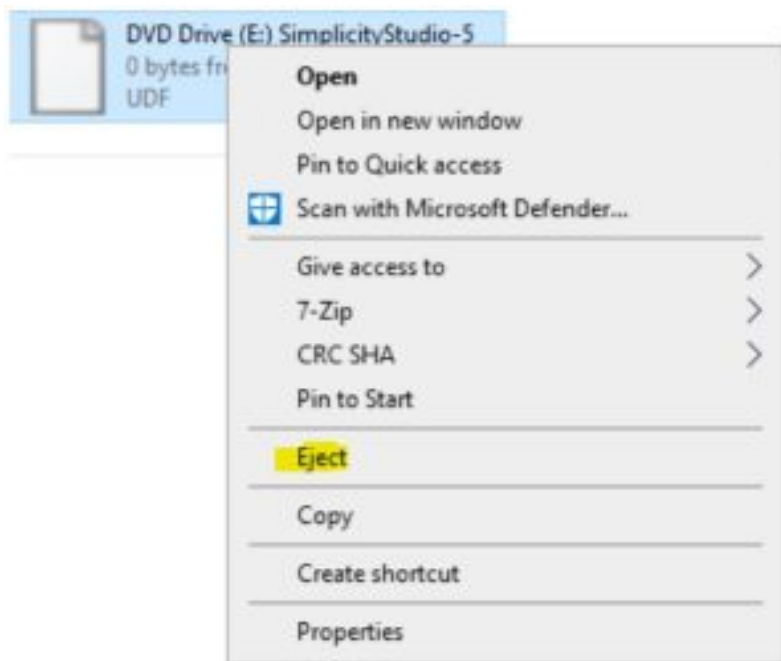
16. After restart select “Tools” button in the bar above.



17. The following window should appear. Scroll down and select “Z-Wave PC Controller” and press “ok”



18. After installation you can eject/close the drive created when the Simplicity Studio installation file is opened. To do so, open This PC, select and right click the DVD drive for Simplicity Studio and select eject. This is not required to use Simplicity studio.



NOTE!

Silicon Labs Z-Wave PC Controller is a developer tool without any warranties. Please be advised of Silicon Labs requirements for downloading the file and how to use the software.

How to update your device:

Exclude the door lock from your controller (follow the instructions from your controller supplier)

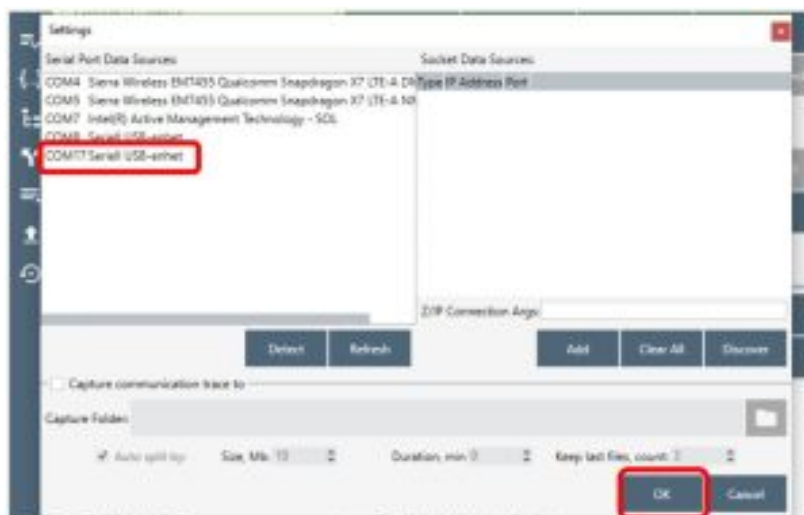
Insert the Z-Wave USB controller to a USB port on your computer

Start Silicon Labs PC Controller as shown above (from 16)

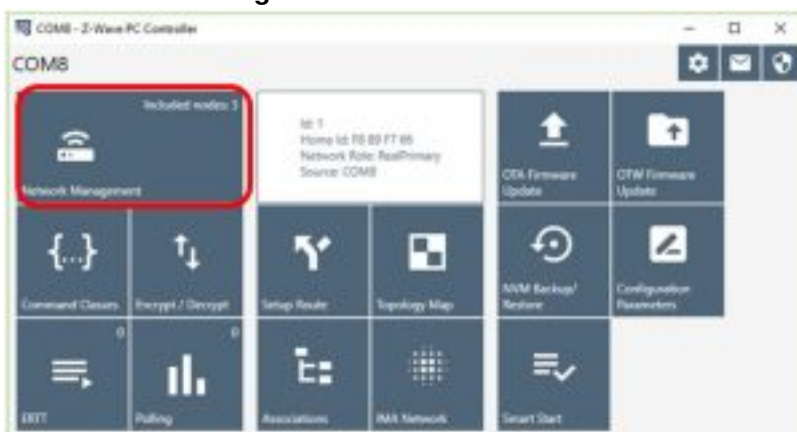
Click on Settings (the gear icon in the top right corner)



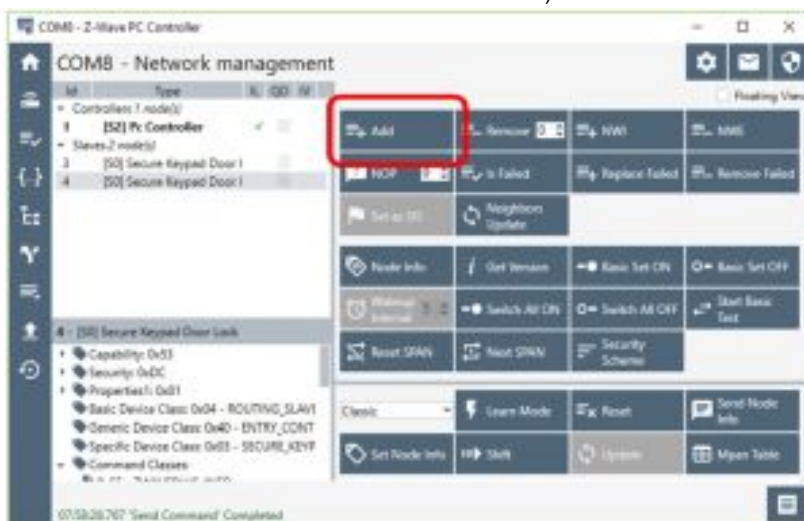
Check the recognized **USB** controller on the list in the dialog window and click **OK**. If there's nothing there, click **DETECT** and then **REFRESH**. If the **USB** controller still doesn't show up, you may need to install special drivers so please contact the manufacturer of the device for instructions.



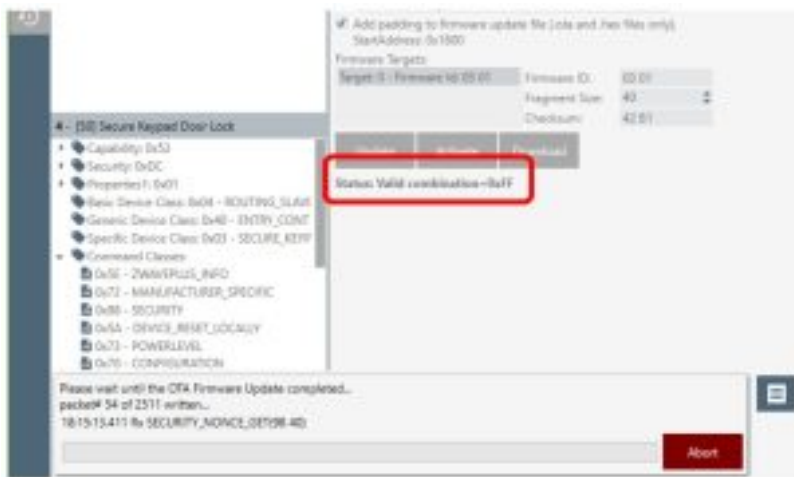
Click **Network Management**



Click ADD to enroll the UZB controller in inclusion mode, then activate inclusion mode on your door lock (please refer to the Z-Wave manual for how to do this)



After a successful inclusion, click ARROW UP ICON to get to the update screen.



If the update process fails or is aborted the status shows: Unable to receive=0x01



NOTE!

After an update of the Z-Wave module it may be required to perform a Z-Wave local reset and a factory reset of your door lock before including it in a new Z-Wave network.

Copyright

The following applies to the ID Lock Z-Wave OTA firmware 1.0, 1.5 and 1.6.



Copyright 2021 ID Lock AS

THIS SOFTWARE IS PROVIDED BY THE COPYRIGHT HOLDERS AND CONTRIBUTORS "AS IS" AND ANY EXPRESS OR IMPLIED WARRANTIES, INCLUDING, BUT NOT LIMITED TO, THE IMPLIED WARRANTIES OF MERCHANTABILITY AND FITNESS FOR A PARTICULAR PURPOSE ARE DISCLAIMED. IN NO EVENT SHALL THE COPYRIGHT HOLDER OR CONTRIBUTORS BE LIABLE FOR ANY DIRECT, INDIRECT, INCIDENTAL, SPECIAL, EXEMPLARY, OR CONSEQUENTIAL DAMAGES (INCLUDING, BUT NOT LIMITED TO, PROCUREMENT OF SUBSTITUTE GOODS OR SERVICES; LOSS OF USE, DATA, OR PROFITS; OR BUSINESS INTERRUPTION) HOWEVER CAUSED AND ON ANY THEORY OF LIABILITY, WHETHER IN CONTRACT, STRICT LIABILITY, OR TORT (INCLUDING NEGLIGENCE OR OTHERWISE) ARISING IN ANY WAY OUT OF THE USE OF THIS SOFTWARE, EVEN IF ADVISED OF THE POSSIBILITY OF SUCH DAMAGE.

idlock.no/zwave



Documents / Resources

 	<p>ID Lock Z-Wave Module Firmware Update [pdf] Instruction Manual ID Lock, Z-Wave, Module, Firmware, Update</p>
---	---

Manuals+.