



ICY BOX IB-HUB1430-CR USB 3.0 Multiport In-Desk Hub User Manual

[Home](#) » [ICY BOX](#) » ICY BOX IB-HUB1430-CR USB 3.0 Multiport In-Desk Hub User Manual 



Contents

- [1 Safety information](#)
- [2 Manual IB-HUB1430-CR](#)
- [3 Documents / Resources](#)
 - [3.1 References](#)
- [4 Related Posts](#)

Please read carefully the following information to prevent injuries, damage to material and device as well as data loss:

Warning levels

Signal words and safety codes indicate the warning level and provide immediate information in terms of the probability of occurrence as well as the type and severity of the consequences if the measures to prevent hazards are not complied with.



Warns of a **directly** hazardous situation causing **death or serious injury**.



Warns of a **potentially** hazardous situation that **may** cause death or serious injury.



Warns of a **potentially** hazardous situation that **may** cause minor injury.



Warns of a **potential** situation that **may** cause material or environmental damage and disrupt operative processes.

Risk of electrical shock



Contact with parts conducting electricity

Risk of death by electrical shock

- Read the operating instructions prior to use
- Make sure the device has been de-energized prior to working on it
- Do not remove contact protection panels
- Avoid contact with conducting parts
- Do not bring plug contacts in contact with pointed and metal objects
- Use in intended environments only
- Operate the device using a power unit that meets the specifications of the type plate only!
- Keep the device/power unit away from humidity, liquid, vapor, and dust
- Do not modify the device
- Do not connect the device during thunderstorms
- Approach specialist retailers if you require repairs

Hazards caused by the development of heat



Sharp components

Potential injuries to fingers or hands during assembly (if intended)

- Read the operating instructions prior to assembly
- Avoid coming into contact with sharp edges or pointed components
- Do not force components together

- Use suitable tools
- Use potentially enclosed accessories and tools only

Hazards caused by the development of heat

IMPORTANT

Insufficient device/power unit ventilation

Overheating and failure of the device/power unit

- Prevent externally heating up components and ensure an exchange of air
- Do not cover the fan outlet and passive cooling elements
- Avoid direct sunlight on the device/power unit
- Guarantee sufficient ambient air for the device/power unit

Do not place objects on the device/power unit

Hazards caused by very small parts and packaging



WARNING

Risk of suffocation

Risk of death by suffocation or swallowing

- Keep small parts and accessories away from children
- Store/dispose of plastic bags and packaging in an area that is inaccessible to children
- Do not hand over small parts and packaging to children

Potential data loss

IMPORTANT

Data lost during commissioning

Potentially irreversible data loss

- Always comply with the information in the operating instructions/quick installation guide
- Exclusively use the product once the specifications have been met
- Back up data prior to commissioning
- Back up data prior to connecting new hardware
- Use accessories enclosed with the product

Cleaning the device

IMPORTANT

Harmful cleaning agents

Scratches, discoloration, damage caused by moisture, or short circuit in the device

- Disconnect the device prior to cleaning
- Aggressive or intense cleaning agents and solvents are unsuitable
- Make sure there is no residual moisture after cleaning
- We recommend cleaning devices using a dry, anti-static cloth

Disposing of the device

IMPORTANT

Environmental pollution, unsuitable for recycling

Potential environmental pollution caused by components, recycling circle interrupted

This icon on the product and packaging indicates that this product must not be disposed of as part of domestic waste. In compliance with the Waste Electrical and Electronic Equipment Directive (**WEEE**), this electrical device and potentially included batteries must not be disposed of in conventional, domestic waste, or **recycling waste**. If you would like to dispose of this product and potentially included batteries, please return it to the retailer or your local waste disposal and recycling point.

The included batteries must be completely discharged before return.

Take precautions to protect the batteries from short circuits (e.g. by insulating the contact poles with adhesive tape).

If you have any questions, please do not hesitate to contact our support at support@raidsonic.de or visit our website at www.icybox.de.

Potential injuries to fingers or hands during assembly (if intended)



Do not touch the contacts when plugging in or out the power plug.





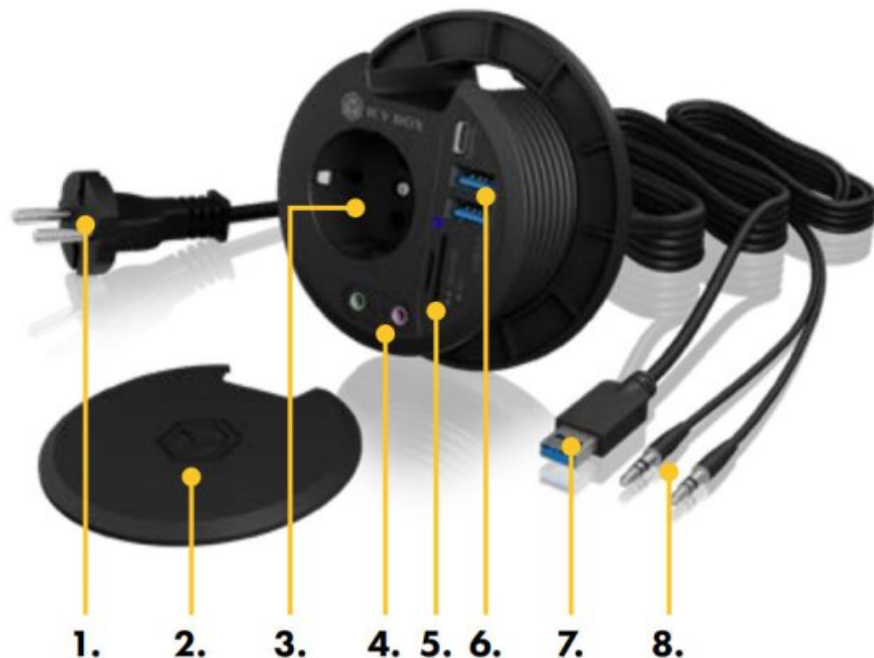
When plugging in and unplugging the power plug, please grip the isolated plug area.

If not in use, cover the power socket with the delivered cover cap!



Manual IB-HUB1430-CR

Product overview



1. EU plug ~230 V / EU Stecker ~230 V
2. Cover cap / Schutzkappe
3. EU socket ~230 V / EU Steckdose ~230 V
4. 3.5 mm audio jack (green audio / red headset/combo) / 3,5 mm Klinkenanschluss (Grün Audio / Rot Headset/Combo)
5. SD/microSD 3.0 card reader / SD/microSD 3.0 Kartenleser
6. 2-port USB 3.0 Hub with USB Type-A / 2-fach USB 3.0 Hub mit USB Type-A USB 3.0 Type-C® port / USB 3.0 Type-C® Anschluss
7. USB 3.0 Type-A to host computer / USB 3.0 Type-A Zum Hostcomputer
8. 3.5 mm audio plug (audio and headset/combo) / 3,5 mm Klinkenstecker (Audio und Headset/Combo)

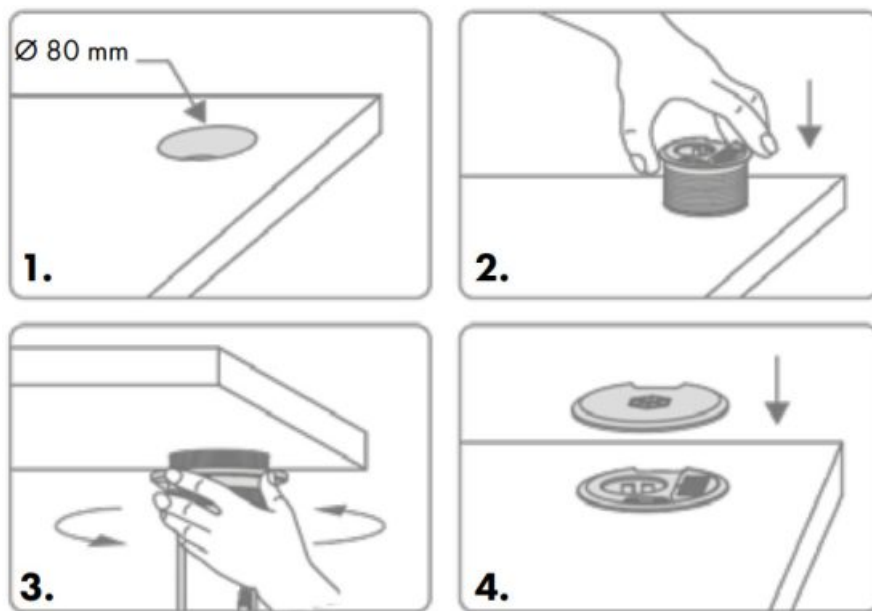
Package Content

1x IB-HUB1430-CR, 1x Cover cap, 1x Manual

Key features

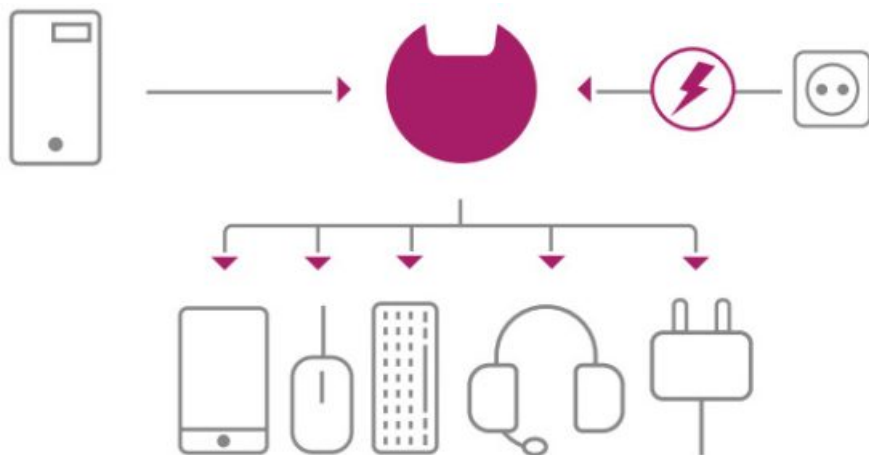
- Multiport USB 3.0 Hub, data transfer with up to 5 Gbit/s
- EU socket with 230 volts for connecting any device
- 2x USB 3.0 Type-A & 1x Type-C® port
- SD/microSD card reader
- 3.5 mm audio jack for headphones and headset (combo)
- Round housing allows mounting in Ø 80 mm cable bushing
- Integrated cables with lengths of 1.4 meters
- For desk thickness of up to 45 mm

Installation



1. To install the hub, there must be a Ø 80 mm hole in the tabletop.	3. Now take the ring and lead the cables through it. Screw the ring onto the hub from below so that it fixes the hub to the tabletop.
2. Unscrew the ring from the hub and insert the hub with the cables first from above through its Ø 80 mm hole.	4. If necessary, cover the hub with the cover cap provided.

Usage



1. Plug the EU plug into a free EU socket.	4. Once the USB cable is connected to your host computer, the blue LED on the USB ports lights up.
2. Plug the USB 3.0 cable into a free USB 3.0 port on your host computer.	5. The Hub is ready to use now.
3. Plug the audio cable into the corresponding 3.5 mm audio jack on your host computer (red for headset/combo, green for headphones)	



Nos produits et emballages se recyclent, ne les jetez pas! site www.quefairedemesdechets.fr

© Copyright 2021 by RaidSonic Technology GmbH. All Rights Reserved.

The information contained in this manual is believed to be accurate and reliable. RaidSonic Technology GmbH assumes no responsibility for any errors contained in this manual.

RaidSonic Technology GmbH reserves the right to make changes in the specifications and/ or design of the above-mentioned product without prior notice. The diagrams contained in this manual may also not fully represent the product that you are using and are there for illustration purposes only. RaidSonic Technology GmbH assumes no responsibility for any differences between the product mentioned in this manual and the product you may have.

Apple and macOS are registered trademarks of Apple Computer Inc. Microsoft, Windows and the Windows logo are registered trademarks of Microsoft Corporation.

Documents / Resources

	<p>ICY BOX IB-HUB1430-CR USB 3.0 Multiport In-Desk Hub [pdf] User Manual IB-HUB1430-CR, USB 3.0 Multiport In-Desk Hub</p>
---	---

References

- [Info-tri | Ministères Écologie Énergie Territoires](#)