



**ECAN-240-FD  
Modbus TCP to 2  
Port CAN FD  
Gateway**



# ICPDAS ECAN-240-FD Modbus TCP to 2 Port CAN FD Gateway Instruction Manual

[Home](#) » [ICPDAS](#) » ICPDAS ECAN-240-FD Modbus TCP to 2 Port CAN FD Gateway Instruction Manual 

## Contents

- [1 ICPDAS ECAN-240-FD Modbus TCP to 2 Port CAN FD Gateway](#)
- [2 Product Information](#)
- [3 Product Usage Instructions](#)
- [4 Packing List](#)
- [5 Connecting the Power Supply](#)
- [6 Configuring the Network Settings](#)
- [7 Configuring the CAN Port](#)
- [8 Documents / Resources](#)
  - [8.1 References](#)
- [9 Related Posts](#)



**ICPDAS ECAN-240-FD Modbus TCP to 2 Port CAN FD Gateway**



## Product Information

### Specifications:

- **Model:** ECAN-240-FD
- **Version:** v2.0, Aug 2023

## Product Usage Instructions

### Connecting the Power Supply and the Host PC

1. Prepare one ECAN-240-FD and ensure that the SW1/SW2 rotary switches are in the 0/0 position.
2. Connect both the ECAN-240-FD and the Host computer to the same sub-network or Ethernet Switch.
3. Power on the ECAN-240-FD.

### Configuring the Network Settings

1. Install the eSearch Utility software from [here](#).
2. Open the eSearch Utility and search for the ECAN-240-FD module.
3. Double-click the module name to open the Configure Server dialog box.
4. Enter the network settings (IP, Mask, Gateway) and click OK.
5. Ensure the new configuration by clicking Search Server button again after 2 seconds.

### Configuring the CAN Port

1. Enter the IP address of the ECAN-240-FD module in a web browser or use eSearch Utility to access it.
2. Login using the default password 'admin'.
3. Change the default password if needed.
4. Go to Port1/2 tab and adjust CAN Port and Filter Settings as required.
5. Click Update Settings to save changes.

## Frequently Asked Questions (FAQ)

- **Q: What are the default network settings of ECAN-240-FD?**

A: The factory default settings are as follows:

- IP Address: 192.168.255.1
- Subnet Mask: 255.255.0.0
- Gateway: 192.168.0.1

- **Q: How can I change the default password for ECAN-240-FD?**

A: To change the default password, log in to the configuration web page using the default password 'admin' and follow the on-screen instructions to set a new password.

- **Q: Can I use any web browser to configure the CAN Port settings?**

A: Yes, you can use popular web browsers like Google Chrome, Internet Explorer, or Firefox to configure the CAN Port settings of ECAN-240-FD.

## Packing List

In addition to this guide, the package includes the following items:



ECAN-240-FD



Screw Driver

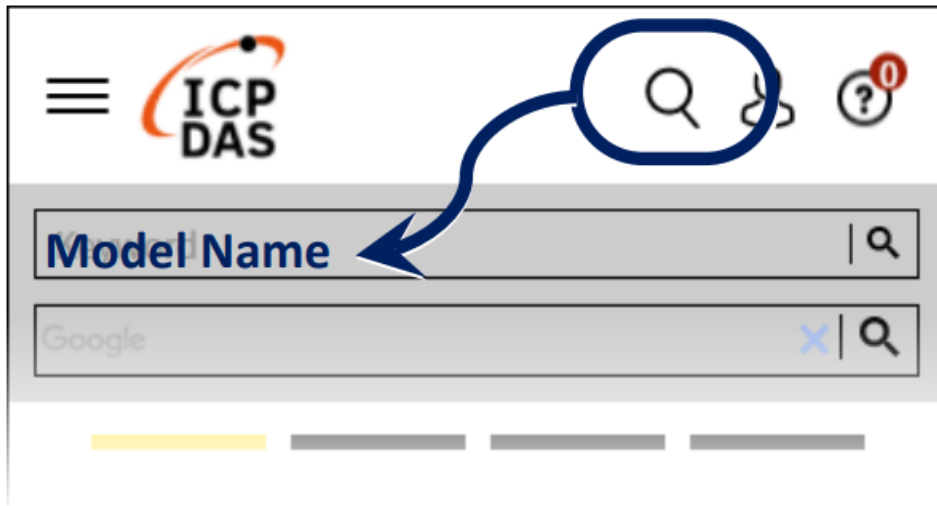
## Technical Support

- [service@icpdas.com](mailto:service@icpdas.com)
- [www.icpdas.com](http://www.icpdas.com)

## Resources

How to search for drivers, manuals and spec information on ICP DAS website.

- For Mobile Web



- For Desktop Web



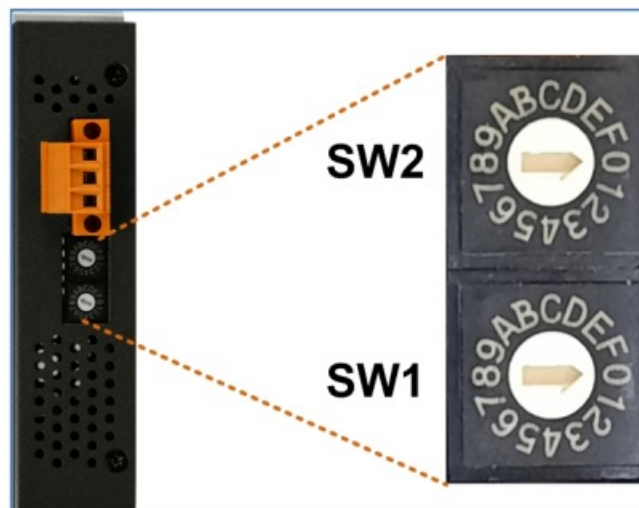
## Connecting the Power Supply

### Connecting the Power Supply and the Host PC

Before using the ECAN-240-FD device, some things must be done.

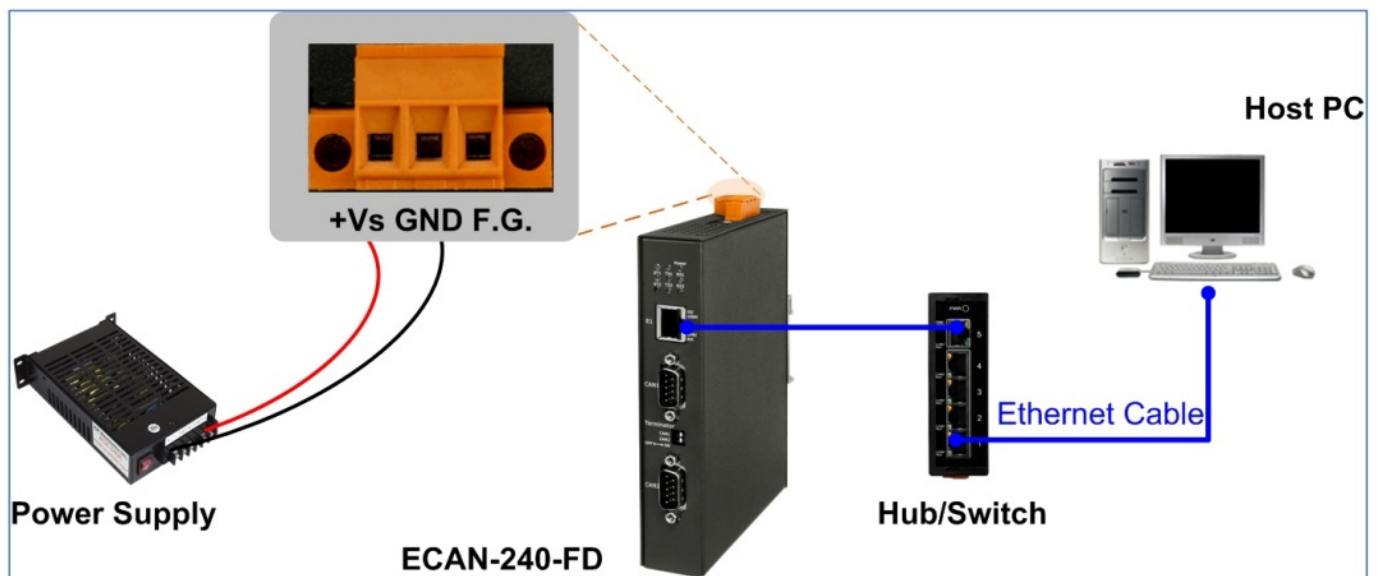
#### Step 1: Prepare one ECAN-240-FD

Check that the SW1/SW2 rotary switches are in the "0/0" position



#### Step 2: Connect both that ECAN-240-FD and the Host computer

Connect both the ECAN-240-FD and the Host computer to the same sub-network or the same Ethernet Switch, and then power on the ECAN-240-FD. Refer to following figure for illustrations of how to do this.



## Configuring the Network Settings

When users want to search and change the default network settings of the module, the eSearch Utility tool may be needed.

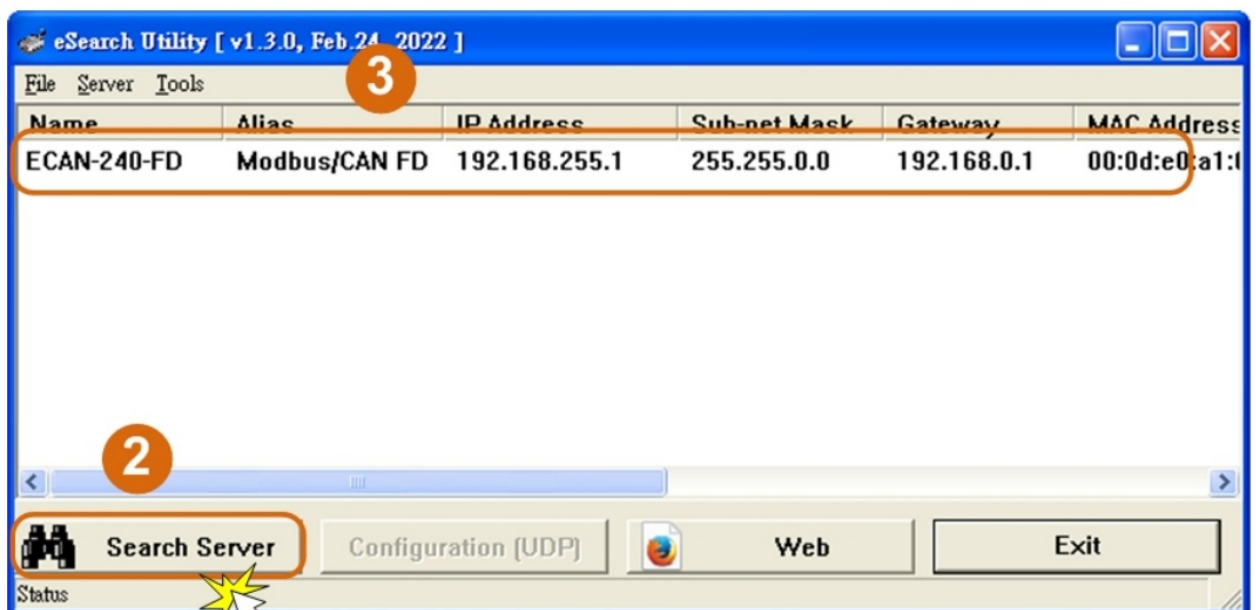
- **Step 1: Install the eSearch Utility**

The software is located at:

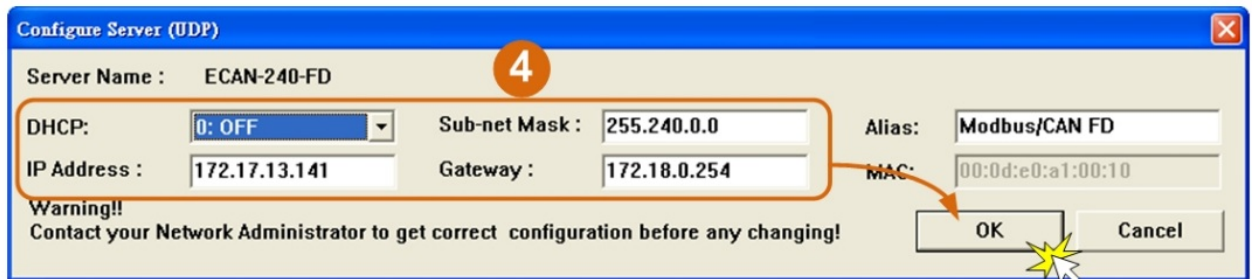
<https://www.icpdas.com/en/download/show.php?num=1327&nation=US&kind1=&model=&kw=esearch>

- **Step 2: Setting up ECAN-240-FD Network Settings**

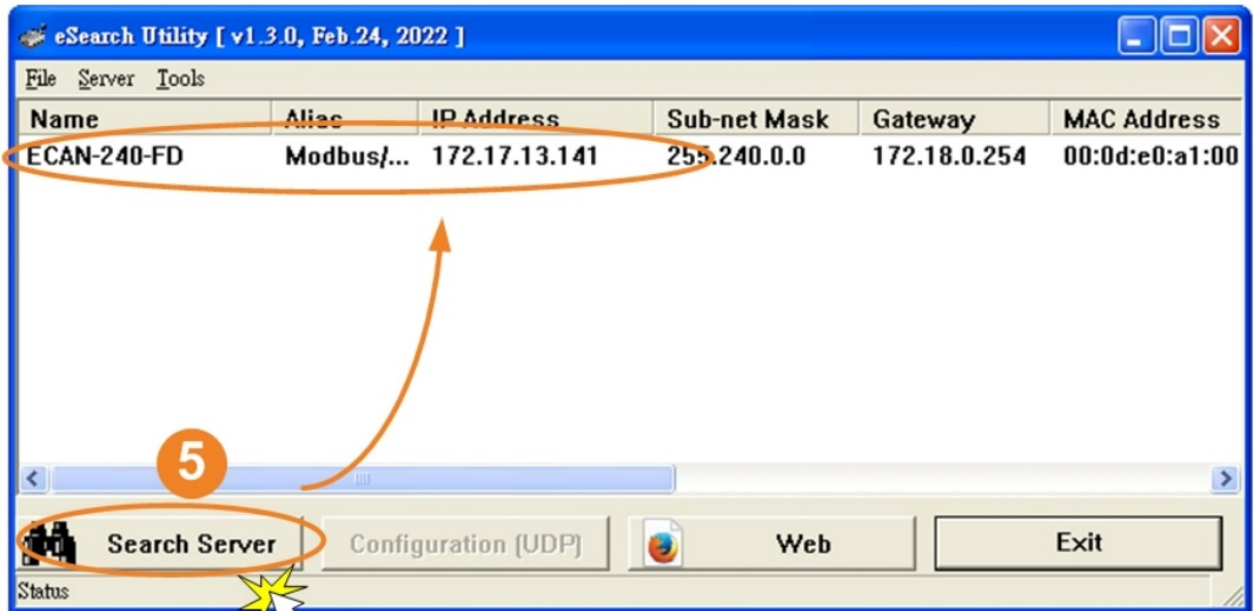
1. Open the eSearch Utility.
2. Click the "Search Server" button to search for the ECAN-240-FD module.
3. Once the search process is complete, double-click the name of the ECAN-240-FD module to open the "Configure Server" dialog box.



4. Enter the network settings information, including the IP, Mask and Gateway addresses, and then click "OK" button.



5. Wait 2 seconds and click “Search Server” button again to ensure the ECAN-240-FD is working well with new configuration.

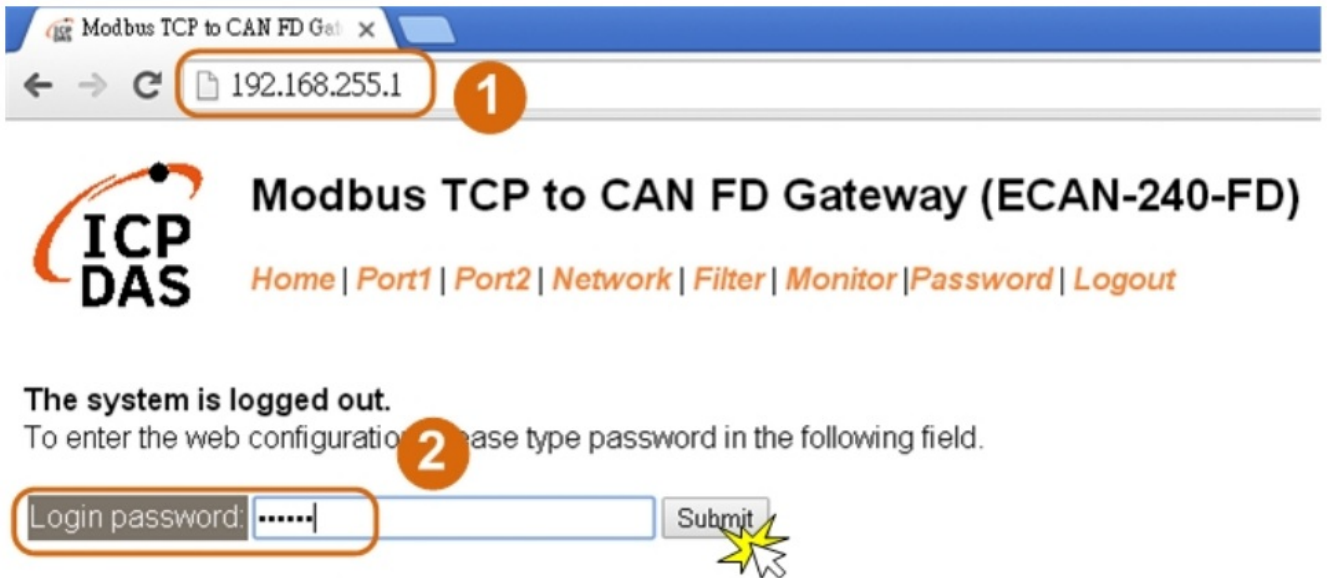


Factory Default Settings of ECAN-240-FD Module:

- **IP Address** 192.168.255.1
- **Subnet Mask** 255.255.0.0
- **Gateway** 192.168.0.1

## Configuring the CAN Port

1. Open a web browser, such as Google Chrome, Internet Explorer, or Firefox, and enter the URL for the ECAN-240-FD module in the address bar of the browser, or click the “Web” button in the eSearch Utility. You can right click the IP address field and click the “Copy to Clipboard” to copy the IP address.
2. When the login screen is displayed, enter the password (use the default password: admin) in the login password field, and then click the “Submit” button to enter the configuration web page.



**Note:** For the first time to use the ECAN-240-FD device, you may need to change the default password to other value.

- Click the "Port1/2" tab to display the Port1/2 Settings page.

Modbus TCP to CAN FD Gateway (ECAN-240-FD)

Home | Port1 | Port2 | Network | Filter | Monitor | Password | Logout

|                   |                    |                     |                   |
|-------------------|--------------------|---------------------|-------------------|
| Model Name:       | ECAN-240-FD        | Alias Name:         | CAN FD Gateway    |
| Firmware Version: | V2.00 [2023/07/17] | MAC Address:        | 00-0D-E0-20-00-10 |
| IP Address:       | 192.168.255.1      | Communication Mode: | Modbus TCP Server |
| Initial Switch:   | 00                 | Local Command Port: | 502               |

- Select the appropriate CAN Port and Filter Settings from the relevant drop down options. Click "Update Settings" to save your settings.

### CAN Port 1 Settings




| CAN Port Settings              | Current    | Updated   | Comment             |
|--------------------------------|------------|-----------|---------------------|
| CAN FD Specification:          | ISO        | ISO ▼     | ISO/Non-ISO sp      |
| Arbitration Bit Rate (kbps):   | 1000.000   | 1000.000  | e.g.: 1000.000,     |
| Data Phase Bit Rate (kbps):    | 1000.000   | 1000.000  | e.g.: 1000.000,     |
| Arbitration Sample Point (%):  | 87.50      | 87.50     | e.g.: 87.50, 1.00   |
| Data Phase Sample Point (%):   | 87.50      | 87.50     | e.g.: 87.50, 1.00   |
| CAN Filter Settings            | Current    | Updated   | Comment             |
| Reject Remote Standard Frames: | Disable    | Disable ▼ | Disable/Enable      |
| Reject Remote Extended Frames: | Disable    | Disable ▼ | Disable/Enable      |
| Standard ID Filter (Hex):      | 0x000      | 000       | 11-bit ID filter, 0 |
| Standard ID Mask (Hex):        | 0x000      | 000       | 11-bit ID mask,     |
| Extended ID Filter (Hex):      | 0x00000000 | 00000000  | 29-bit ID filter, 0 |
| Extended ID Mask (Hex):        | 0x00000000 | 00000000  | 29-bit ID mask,     |

Update Settings

4

## Documents / Resources



[ICPDAS ECAN-240-FD Modbus TCP to 2 Port CAN FD Gateway](#) [pdf] Instruction Manual  
 ECAN-240-FD Modbus TCP to 2 Port CAN FD Gateway, ECAN-240-FD, Modbus TCP to 2 Port  
 CAN FD Gateway, Port CAN FD Gateway, FD Gateway

## References

-  [SUPPORT - ICP DAS](#)
- [User Manual](#)

[Manuals+.](#) [Privacy Policy](#)

This website is an independent publication and is neither affiliated with nor endorsed by any of the trademark owners. The "Bluetooth®" word mark and logos are registered trademarks owned by Bluetooth SIG, Inc. The "Wi-Fi®" word mark and logos are registered trademarks owned by the Wi-Fi Alliance. Any use of these marks on this website does not imply any affiliation with or endorsement.