



ICP DAS PMC-5151 Power Meter Concentrator User Guide

[Home](#) » [ICP DAS](#) » ICP DAS PMC-5151 Power Meter Concentrator User Guide 



Contents

- [1 PMC-5151 Quick Start](#)
- [2 Supported Models](#)
- [3 Technical Support](#)
- [4 What's in the box?](#)
- [5 1 Configuring the Boot Mode](#)
- [6 2 Connect to PC, Network and Power](#)
- [7 3 Using Browser to Assign a New IP](#)
- [8 4 Go to PMC-5151 Web Site for Power Management](#)
- [9 Documents / Resources](#)
 - [9.1 References](#)
- [10 Related Posts](#)

PMC-5151 Quick Start

Supported Models

- PMC-5151

Technical Support

- **PMC-5151 User Manual and Firmware:**
 - <http://pmms.icpdas.com/en/download.html>
 - ftp://ftp.icpdas.com/pub/cd/pmc_cd/pmc-5151/
- **PMC-5151 Official Website:**
 - http://pmms.icpdas.com/en/PMC_5151.html

What's in the box?

The package includes the following items:



PMC-5151

microSD card

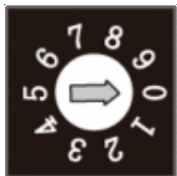
Screw Driver



Pin Terminal* 16

1 Configuring the Boot Mode

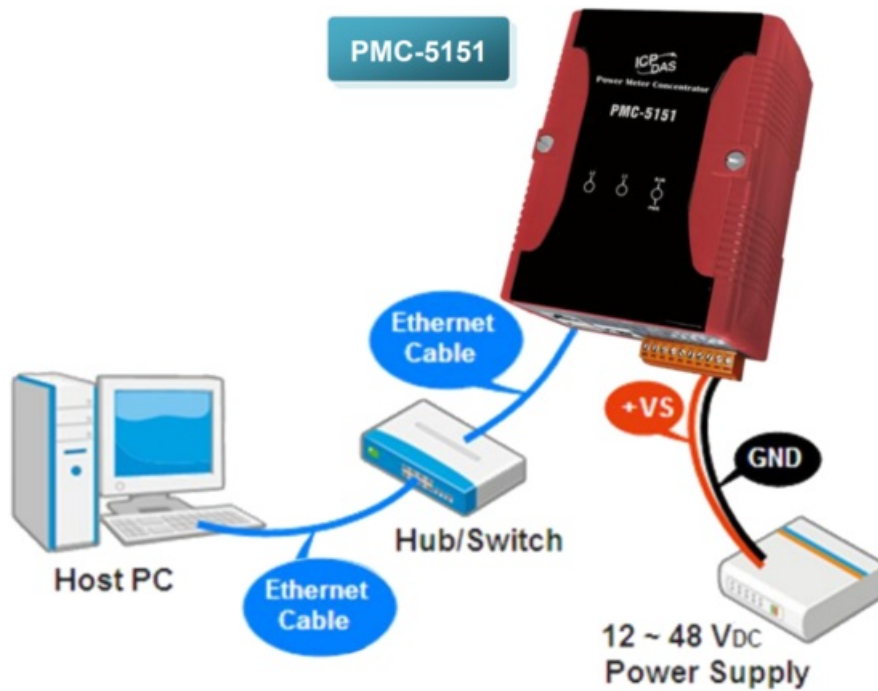
Before starting PMC-5151 at the first time, be sure that the switch is placed in the “0” position.



The rotary switch must be placed in the “0” position

2 Connect to PC, Network and Power

The PMC-5151 is equipped with an RJ-45 Ethernet port for connection to an Ethernet hub/switch and PC. You can also link directly the PMC-5151 to PC with an Ethernet cable.



3 Using Browser to Assign a New IP

The PMC-5151 is an Ethernet controller, which comes with a default IP setting; therefore, you must first assign a new IP setting to the LAN1 port of PMC. The factory default IP settings of PMC are as follows:

Item	Default
IP Address	192.168.255.1
Subnet mask	255.255.0.0
Gateway	192.168.0.1
DNS Server	8.8.8.8 (Default: Google DNS Server)

Follow the following steps for PMC-5151 new IP setting:

Step1: Change the PC's IP setting as following.

- IP: 192.168.255.10
- Subnet mask: 255.255.0.0
- Gateway address: 192.168.0.1

Step2: Make sure the PC and PMC(**LAN1**) is connecting through Ethernet.

Step3: Open a PC side browser, and type in the URL address (<http://192.168.255.1>) of the PMC to connect the Web Server in PMC.

Step4: Use default Administrator password "**Admin**" to login the system.

Step5: Please follow the sequence System Setting → Network Setting → Network Setting (**LAN1**) to change the IP setting of PMC.

	192	168	100	31
*Mask	255	255	255	0
*Gateway	192	168	100	254
*DNS	192	168	100	254

Step6: After complete the IP setting, please save it, and then the new IP setting will take effect.

4 Go to PMC-5151 Web Site for Power Management

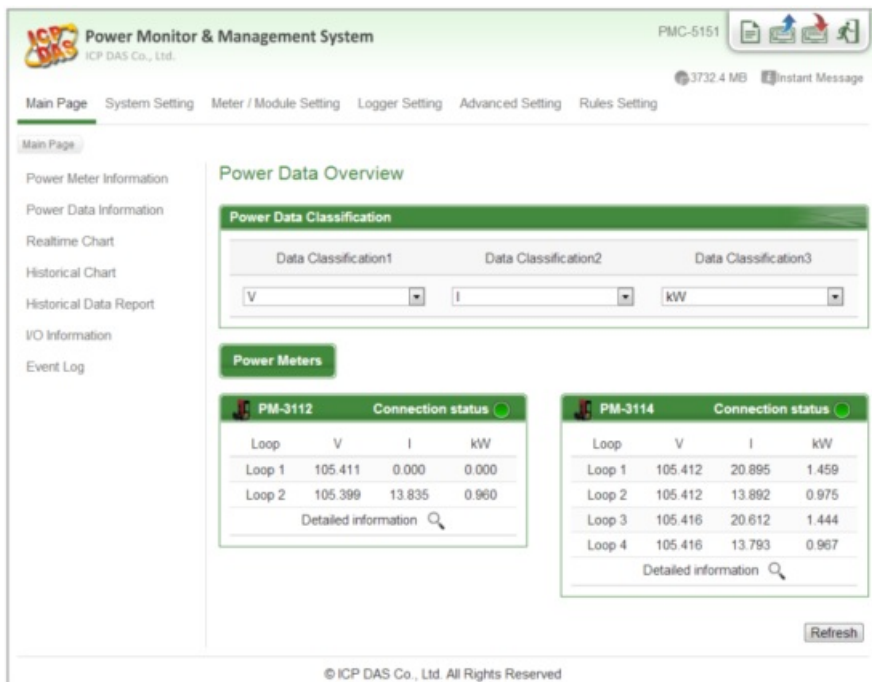
Please follow the steps below to build a power monitoring and management applications with ICP DAS PMC-5151 & Power Meter.

Step 1: Open a browser, and type in the URL address of the PMC

Open a browser and type in the URL address(The new IP setting) of the PMC in the address bar. Make sure the IP address is accurate.

Step 2: Get on the PMC web site

Get on the PMC web site. Complete the PMC setting in the order: Login → System Setting → Meter / Module Setting → Rule Setting → Save for a power monitoring and management application.



Step 3: For more detail information, please refer to PMC-5151 User Manual



ventas@logicbus.com

iTu sitio de automatización!

+ 52 (33)-3823-4349

www.tienda.logicbus.com.mx

Documents / Resources

PMC-5151 Quick Start

Supported Models

- PMC-5151

Technical Support

- PMC-5151 User Manual and Firmware
- PMC-5151 Official Website

What's in the box?

The package includes the following items:

- PMC-5151
- Power Meter Concentrator
- Power Meter Concentrator
- Power Meter Concentrator

[ICP DAS PMC-5151 Power Meter Concentrator](#) [pdf] User Guide

PMC-5151, Power Meter Concentrator

References

- <ftp.icpdas.com> - /pub/cd/pmc_cd/pmc-5151/
- iotstar.icpdas.com/
- [ICP DAS PMMS](#)
- [ICP DAS PMMS](#)

Manuals+.